

**STATE OF ILLINOIS
CITY OF ELMWOOD
MORGAN STREET AREA IMPROVEMENT**

**PROPOSED
HIGHWAY PLANS**

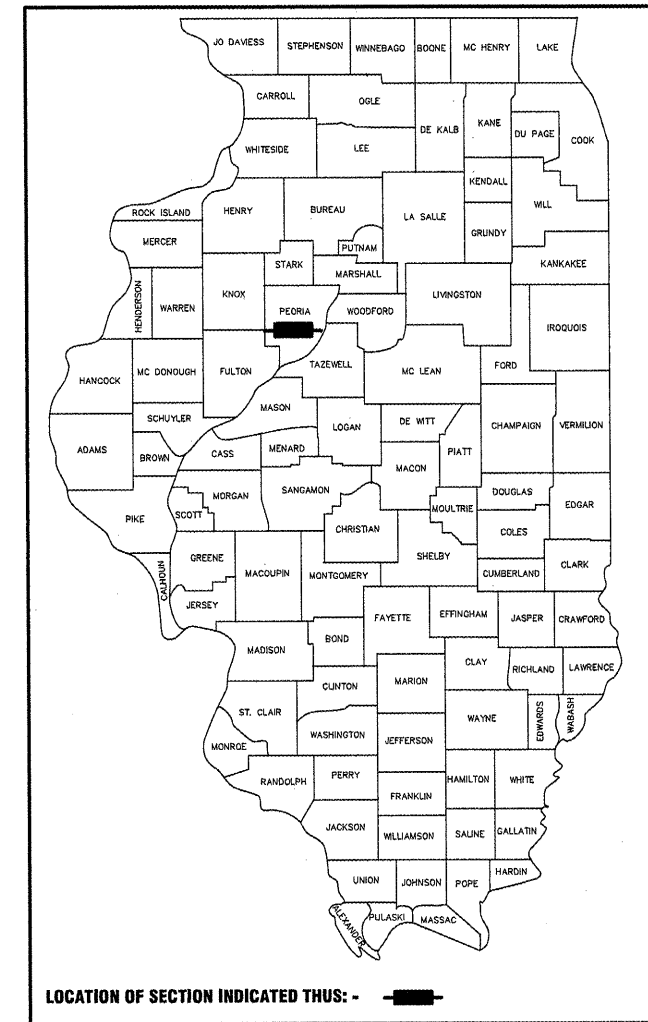
**VARIOUS ROUTES
SECTION 08-00001-00-SW
PROJECT HD-0557 (144)
JOB NO. C-94-124-08
PEORIA COUNTY**

INDEX OF SHEETS

- 1 COVER SHEET
- 2 GENERAL NOTES AND DETAILS
- 3 SUMMARY OF QUANTITIES
- 4-6 SCHEDULE OF QUANTITIES
- 7-12 TYPICAL SECTIONS
- 13 HORIZONTAL AND VERTICAL CONTROL
- 14-17 PLAN & PROFILES
- 18-26 DISTRICT STANDARDS
- 27-33 CROSS SECTIONS

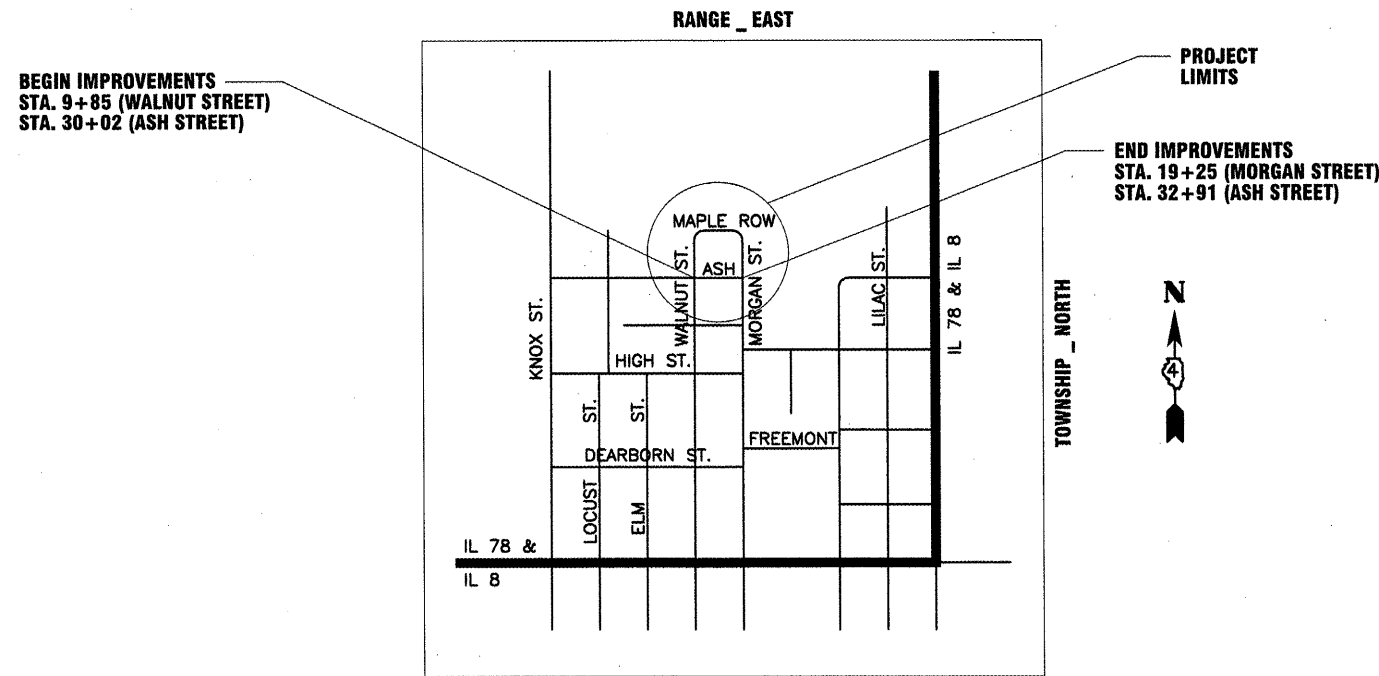
LIST OF STANDARDS

- 000001-05 STANDARD SYMBOLS, ABBREVIATIONS AND PATTERNS
- 280001-04 TEMPORARY EROSION CONTROL SYSTEMS
- 424001-05 CURB RAMPS FOR SIDEWALKS
- 602301-02 INLET - TYPE A
- 602306-02 INLET - TYPE B
- 606001-04 CONCRETE CURB TYPE B AND COMBINATION CONCRETE CURB AND GUTTER
- 701501-05 URBAN LANE CLOSURE, 2L, 2W, UNDIVIDED
- 701901-01 TRAFFIC CONTROL DEVICES



LOCATION OF SECTION INDICATED THUS: - ■ -

DESCRIPTION: THE PROPOSED IMPROVEMENT INCLUDES HOT-MIX ASPHALT BASE COURSE WIDENING, COMBINATION CONCRETE CURB AND GUTTER, SIDEWALK, INLET REPLACEMENT, SEEDING, ETC.



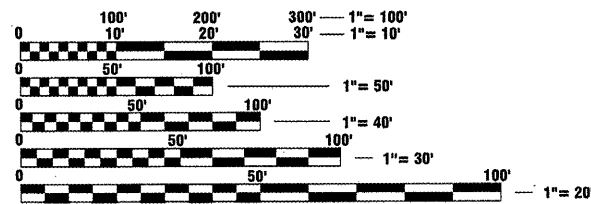
LOCATION MAP
NOT TO SCALE

LENGTH OF PROJECT = 1100 FT = 0.21 MILES

ROADWAY CLASSIFICATION: LOCAL ROADS
CURRENT ADT = ESTIMATED AT 200
DESIGN ADT = 200
DESIGN SPEED = 30 MPH
DESIGN GUIDELINES: 3R
VARIANCES: NONE
COMMITMENTS: NONE



Patrick N. Meyer
4/26 2009
EXPIRES: 11/30/2009



FULL SIZE PLANS HAVE BEEN PREPARED USING STANDARD ENGINEERING SCALES. REDUCED SIZED PLANS WILL NOT CONFORM TO STANDARD SCALES. IN MAKING MEASUREMENTS ON REDUCED PLANS, THE ABOVE SCALES MAY BE USED.

J.U.L.I.E.
JOINT UTILITY LOCATION INFORMATION FOR EXCAVATION
1-800-892-0123
OR 811

**PROJECT ENGINEER
PROJECT MANAGER**

CONTRACT NO. 89507

APPROVED	<i>[Signature]</i>	20 09
	LOCAL AGENCY OFFICIAL	
PASSED	<i>[Signature]</i>	20 09
	DISTRICT FOUR ENGINEER OF LOCAL ROADS & STREETS	
Releasing For Bid Based On Limited Review	<i>[Signature]</i>	20 09
	DEPUTY DIRECTOR OF HIGHWAYS, REGION THREE ENGINEER	
	STATE OF ILLINOIS DEPARTMENT OF TRANSPORTATION	

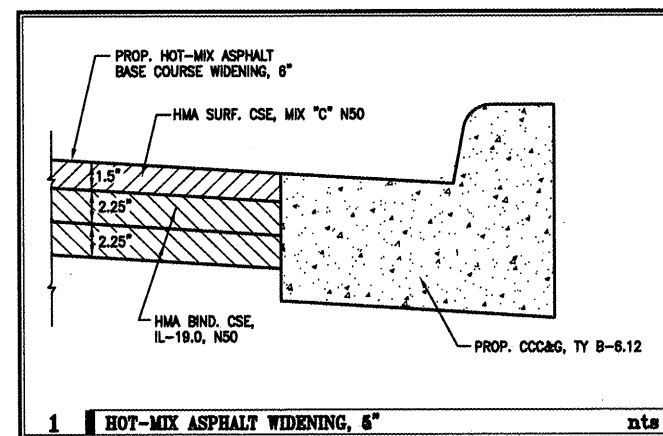
**PRINTED BY THE AUTHORITY
OF THE STATE OF ILLINOIS**

PROPOSED CURB FLOWLINE TABLE			
	STA.	LT	RT
WALNUT	10+25	637.16	636.73
		-1.16%	-0.44%
	10+50	636.87	636.62
		-1.04%	-0.84%
	10+75	636.61	636.41
		-1.08%	-0.56%
	11+00	636.34	636.27
		-0.86%	-1.21%
	11+29	636.09	635.92
		-0.92%	-0.88%
	11+55	635.85	635.69
		-1.15%	-0.40%
	11+75	635.62	635.61
		-1.18%	-0.41%
	11+92	635.42	635.54
	-1.12%	-1.12%	
12+00	635.33	635.45	
	-0.72%	-2.16%	
12+25	635.15	634.91	
	-1.40%	-2.47%	
12+55	634.73	634.17	
	-0.30%	-1.15%	
12+75	634.67	633.94	
	-1.20%	-2.12%	
MAPLE	13+00	634.37	633.41

PROPOSED CURB FLOWLINE TABLE			
	STA.	LT	RT
MAPLE	13+00	634.37	633.41
		-3.04%	-0.88%
	13+25	633.61	633.19
		-2.64%	-1.44%
	13+50	632.95	632.83
		-2.24%	-1.60%
	13+75	632.39	632.43
		-2.29%	-1.71%
	13+82	632.23	632.31
		-2.22%	-1.61%
	14+00	631.83	632.02
		-1.80%	-1.52%
	14+25	631.38	631.64
		-1.68%	-1.52%
	14+50	630.96	631.26
	-1.43%	-0.93%	
14+78	630.56	631.00	
	-1.36%	-2.14%	
15+00	630.26	630.53	
	-0.76%	-1.12%	
15+25	630.07	630.25	
	-0.72%	-1.08%	
15+50	629.89	629.98	
	-1.08%	-1.48%	
MORGAN	15+75	629.62	629.61

PROPOSED CURB FLOWLINE TABLE			
	STA.	LT	RT
MORGAN	15+75	629.62	629.61
			-1.33%
	15+90		629.41
			-1.30%
	16+00		629.28
			-1.24%
	16+25		628.97
			0.40%
	16+50		629.07
			0.36%
	16+78		629.17
			0.41%
	17+00		629.26
			0.36%
	17+25		629.35
		1.04%	
17+48		629.59	
		1.89%	
17+75		630.10	
		2.00%	
17+93		630.46	
		1.71%	
18+00		630.58	
		1.48%	
18+25		630.95	
		2.16%	
18+50		631.49	
		2.80%	
18+75		632.19	

PROPOSED CURB FLOWLINE TABLE			
	STA.	LT	RT
ASH	30+25	637.27	636.68
		-2.44%	-0.76%
	30+50	636.66	636.49
		-2.64%	-0.88%
	30+75	636.00	636.27
		-2.72%	-2.80%
	31+00	635.32	635.57
		-2.04%	-2.52%
	31+25	634.81	634.94
		-2.08%	-2.00%
	31+50	634.29	634.44
		-2.04%	-2.00%
	31+75	633.78	633.94
		-1.00%	-0.52%
	32+00	633.53	633.81
	-0.32%	-0.64%	
32+25	633.45	633.65	
	-0.48%	-0.72%	
32+50	633.33	633.47	
	-1.80%	0.40%	
32+75	632.88	633.57	



HOT-MIX ASPHALT MIX TABLE		
	BINDER	SURFACE
PG	64-22	64-22
RAP % (max.)	25%	15%
VOIDS	4.0% @ N=50	4.0% @ N=50
MIX COMP.	IL 19.0	IL 9.5 OR 12.5
FRICTION AGG.	N.A.	MIX 'C'

GENERAL NOTES

- ALL CONSTRUCTION MATERIALS, EARTHWORK, SUB-BASE, AND SURFACE CONSTRUCTION SHALL CONFORM TO THE APPLICABLE ARTICLES OF THE "STANDARD SPECIFICATIONS FOR ROAD AND BRIDGE CONSTRUCTION" OF THE STATE OF ILLINOIS DEPARTMENT OF TRANSPORTATION, LATEST EDITION - HEREINAFTER REFERRED TO AS "STANDARD SPECIFICATIONS", AND THE PROJECT SPECIAL PROVISIONS.
- ABANDONED UNDERGROUND UTILITIES THAT CONFLICT WITH CONSTRUCTION SHALL BE REMOVED AND DISPOSED OF OUTSIDE THE LIMITS OF THE RIGHT OF WAY ACCORDING TO ARTICLE 202.03 OF THE STANDARD SPECIFICATIONS AND AS DIRECTED BY THE ENGINEER. THIS WORK WILL NOT BE PAID FOR SEPARATELY BUT SHALL BE INCLUDED IN THE CONTRACT COSTS, AND NO ADDITIONAL COMPENSATION WILL BE ALLOWED.
- THE CONTRACTOR SHALL BE RESPONSIBLE FOR PROTECTING UTILITY PROPERTY FROM CONSTRUCTION OPERATIONS AS OUTLINED IN ARTICLE 107.26 OF THE STANDARD SPECIFICATIONS. THE J.U.L.I.E. NUMBER IS 800-892-0123. A MINIMUM OF 48 HOURS ADVANCE NOTICE IS REQUIRED. UTILITIES SHOWN ON PLANS ARE APPROXIMATE ELEVATIONS AND LOCATIONS ONLY. ACTUAL ELEVATIONS AND LOCATIONS ARE TO BE VERIFIED IN THE FIELD BY THE CONTRACTOR.
- ALL ELEVATIONS SHOWN ARE IN REFERENCE TO THE BENCHMARKS AND MUST BE FIELD VERIFIED BY THE GENERAL CONTRACTOR PRIOR TO CONSTRUCTION.
- ALL DISTURBED EARTH AREAS SHALL BE SEEDED WITH A CLASS 1 LAWN MIXTURE AS SPECIFIED IN SECTION 250 OF THE "STANDARD SPECIFICATIONS". 4" OF TOPSOIL SHALL BE PLACED ON ALL DISTURBED EARTH AREAS PRIOR TO SEEDING. THE COST OF THE TOPSOIL SHALL BE INCLUDED IN THE SEEDING PAY ITEM.
- THE LOCATIONS OF EXISTING WATER MAINS, GAS MAINS, SEWERS, ELECTRIC POWER LINES, TELEPHONE LINES AND OTHER UTILITIES AS SHOWN ON THE PLANS ARE BASED ON CAREFUL FIELD INVESTIGATION AND THE BEST INFORMATION AVAILABLE, BUT ARE NOT GUARANTEED. IT SHALL BE THE CONTRACTOR'S RESPONSIBILITY TO ASCERTAIN THEIR EXACT LOCATION FROM UTILITY COMPANIES AND BY FIELD INSPECTION.
- ALL EMBANKMENT MATERIAL ON FILL AREAS SHALL BE APPROVED BY THE ENGINEER.
- EARTH EXCAVATION AND EMBANKMENT SHALL BE INCLUDED IN THE COST OF HMA BASE COURSE WIDENING, 6", CCC&G TYPE B-6.12, SEEDING, AND OTHER APPLICABLE PAY ITEMS IN THE CONTRACT.
- PRIOR TO THE USE OF ANY PROPOSED BORROW AREAS, USE AREAS (TEMPORARY ACCESS ROADS, DETOURS, RUN-AROUNDS, ETC.) AND/OR WASTE AREAS, THE CONTRACTOR SHALL FILE THE REQUIRED ENVIRONMENTAL RESOURCE REQUEST SURVEYS ACCORDING TO SECTION 107.22 OF THE STANDARD SPECIFICATIONS. THESE SURVEYS ARE REQUIRED IN ORDER FOR THE DEPARTMENT TO CONDUCT CULTURAL AND BIOLOGICAL RESOURCE SURVEYS FOR THE PROPOSED SITE.

PRIOR TO ANY WASTE MATERIALS BEING REMOVED FROM THE CONSTRUCTION SITE THE REQUIRED ENVIRONMENTAL RESOURCE SURVEYS WILL NEED TO BE OBTAINED AND FILED BY THE CONTRACTOR. EXCESS WASTE PRODUCTS REMOVED FROM THE CONSTRUCTION SITE SHALL BE DISPOSED OF AS REQUIRED IN SECTION 202.03 OF THE STANDARD SPECIFICATIONS.

ANY PROTRUDING METAL BARS SHALL BE REMOVED PRIOR TO THE DISPOSAL OF BROKEN CONCRETE AT APPROVED DISPOSAL SITES.

THE REQUIRED ENVIRONMENTAL RESOURCE DOCUMENTATION SHALL INCLUDE THE FOLLOWING:

BDE FORM 2289 (ENVIRONMENTAL SURVEY REQUEST)
A LOCATION MAP SHOWING THE SIZE LIMITS AND LOCATION OF THE USE AREA
SIGNED PROPERTY OWNER AGREEMENT FORM - D4 P10100
COLOR PHOTOGRAPHS DEPICTING THE USE AREA
BORROW AREA ENTRY AGREEMENT FORM - D4 P10101

PLEASE NOTE THAT A MINIMUM OF TWO WEEKS SHALL BE ALLOWED FOR THE DISTRICT TO OBTAIN THE REQUIRED ENVIRONMENTAL CLEARANCES.
- THE CONTRACTOR SHALL NOT STORE MATERIALS OR PARK EQUIPMENT OUTSIDE THE WORK ZONE.
- THE CONTRACTOR SHALL STOCKPILE ALL TOPSOIL WHERE AVAILABLE FOR USE THROUGHOUT THE PROJECT.
- THE PERIMETER EROSION BARRIER SHALL BE PLACED ALONG THE CONSTRUCTION BOUNDARIES AT THE STATIONS SHOWN IN THE SCHEDULE OF QUANTITIES.
- THE ENTIRE SUBGRADE SHALL BE COMPACTED TO NOT LESS THAN 95% OF THE STANDARD LABORATORY DENSITY.
- AGGREGATE SURFACE COURSE, TYPE B SHALL BE WHITE ROCK WITH A 6" THICKNESS.
- THE COST FOR DETECTABLE WARNINGS AND SIDEWALK RAMPS SHALL BE INCLUDED IN THE COST FOR PORTLAND CEMENT CONCRETE SIDEWALK 4 INCH WHERE ADA CURB RAMPS FOR SIDEWALKS ARE NECESSARY.

SUMMARY OF QUANTITIES

PAY ITEM #	DESCRIPTION	UNIT	QUANTITY
20800150	TRENCH BACKFILL	CU YD	81
25000100	SEEDING, CLASS 1	ACRE	0.25
25000400	NITROGEN FERTILIZER NUTRIENT	POUND	22.5
25000500	PHOSPHORUS FERTILIZER NUTRIENT	POUND	22.5
25000600	POTASSIUM FERTILIZER NUTRIENT	POUND	22.5
25100115	MULCH, METHOD 2	ACRE	0.25
25200200	SUPPLEMENTAL WATERING	UNIT	60
28000400	PERIMETER EROSION BARRIER	FOOT	1023
28000500	INLET AND PIPE PROTECTION	EACH	11
35600700	HOT-MIX ASPHALT BASE COURSE WIDENING, 6"	SQ YD	810
40200800	AGGREGATE SURFACE COURSE, TYPE B	TON	24
42300200	PORTLAND CEMENT CONCRETE DRIVEWAY PAVEMENT, 6 INCH	SQ YD	130
42400100	PORTLAND CEMENT CONCRETE SIDEWALK 4 INCH	SQ FT	975
44000200	DRIVEWAY PAVEMENT REMOVAL	SQ YD	79
44000300	CURB REMOVAL	FOOT	131

SUMMARY OF QUANTITIES

PAY ITEM #	DESCRIPTION	UNIT	QUANTITY
44000500	COMBINATION CURB AND GUTTER REMOVAL	FOOT	282
44000600	SIDEWALK REMOVAL	SQ FT	249
50105220	PIPE CULVERT REMOVAL	FOOT	215
55100500	STORM SEWER REMOVAL 12"	FOOT	101
60237480	INLETS, TYPE A, TYPE 37 GRATE	EACH	1
60240210	INLETS, TYPE B, TYPE 1 FRAME, OPEN LID	EACH	2
60241800	INLETS, TYPE G-1	EACH	8
60405500	FRAME AND GRATES (INLET G-1)	EACH	6
60500060	REMOVING INLETS	EACH	5
60600605	CONCRETE CURB, TYPE B	FOOT	20
60603800	COMBINATION CONCRETE CURB AND GUTTER, TYPE B-6.12	FOOT	1929
67100100	MOBILIZATION	L SUM	1
70103700	TRAFFIC CONTROL COMPLETE	L SUM	1
XX003360	STORM SEWER PVC (SDR 26), 12"	FOOT	454
Z0004300	BITUMINOUS CONCRETE PAVEMENT PATCHING	TON	39

SEEDING SCHEDULE								
LOCATION	25000100	25100115	25000400	25000500	25000600	25200200	SUPPLEMENTAL WATERING (1 UNIT=1000 GAL)	
	PLAN AREA	SEEDING, CLASS 1	MULCH, METHOD 2	NITROGEN (90 LB/ACRE)	PHOSPHORUS (90 LB/ACRE)	POTASSIUM (90 LB/ACRE)		
	SQ FT	ACRE	ACRE	POUND	POUND	POUND		UNIT
WALNUT STREET	3028	0.07	0.07	6.26	6.26	6.26	16.8	
MAPLE ROW	4770	0.11	0.11	9.86	9.86	9.86	26.5	
MORGAN STREET	347	0.01	0.01	0.72	0.72	0.72	1.9	
ASH STREET	2722	0.06	0.06	5.62	5.62	5.62	15.1	
TOTALS		0.25	0.25	22.5	22.5	22.5	60	

PERIMETER EROSION BARRIER						28000400
LOCATION					LT/RT	QUANTITY FOOT
WALNUT STREET						
STA.	11+47.00	TO	STA.	11+83.00	RT	39
STA.	12+00.00	TO	STA.	12+75.00	RT	74
STA.	12+25.00	TO	STA.	12+33.00	LT	8
STA.	12+70.00	TO	STA.	13+00.00	LT	53
MAPLE ROW						
STA.	13+00.00	TO	STA.	13+78.16	LT	108
STA.	13+86.71	TO	STA.	15+75.00	LT	207
ASH STREET						
STA.	30+00.00	TO	STA.	31+93.00	LT	190
STA.	32+09.00	TO	STA.	32+85.00	LT	76
STA.	30+00.00	TO	STA.	32+90.00	RT	268
TOTAL=						1023

TRENCH BACKFILL										20800150
LOCATION							WIDTH FEET	LENGTH FEET	DEPTH FEET	QUANTITY CU YD
MAPLE ROW										
STA.	13+25.00	17' RT	TO	STA.	13+25.00	17' LT	2.5	34	2.50	7.9
STA.	13+25.00	17' LT	TO	STA.	15+79.73	17.5' LT	2.5	264	2.00	48.9
STA.	15+79.73	17.5' LT	TO	STA.	16+25.00	9.2' RT	2.5	53	1.80	8.8
MORGAN STREET										
STA.	16+23.20	8.3' RT	TO	STA.	16+50.00	7.2' RT	2.17	26	0.70	1.5
STA.	18+63.77	8.5' RT	TO	STA.	18+63.77	1.5' LT	2.5	10	2.12	2.0
ASH STREET										
STA.	29+67.00	25.7' RT	TO	STA.	30+04.88	20.6' RT	2.5	38	0.84	3.0
STA.	30+04.88	20.6' RT	TO	STA.	30+20.36	13.7' RT	2.5	17	0.79	1.2
STA.	32+81.19	13.3' RT	TO	STA.	32+87.23	24.0' LT	2.5	38	2.22	7.8
TOTAL=									81	

INLET AND PIPE PROTECTION				28000500
LOCATION		LT/RT	OFFSET FEET	QUANTITY EACH
MAPLE ROW				
STA.	13+25.00	LT	17.58'	1
STA.	13+25.00	RT	17.58'	1
STA.	15+79.44	LT	19.0'	1
MORGAN STREET				
STA.	16+25.00	RT	9.2'	1
STA.	18+63.77	LT	1.8'	1
STA.	18+63.77	RT	9.1'	1
ASH STREET				
STA.	29+65.31	RT	26.35'	1
STA.	30+05.99	RT	21.73'	1
STA.	30+20.36	RT	13.7'	1
STA.	32+81.30	RT	15.2'	1
STA.	32+87.23	LT	24.0'	1
TOTAL=			11	

PORTLAND CEMENT CONCRETE DRIVEWAY PAVEMENT, 6 INCH				42300200
LOCATION		WIDTH	LT/RT	QUANTITY SQ YD
MAPLE ROW				
STA.	14+77.52	20'	RT	37.2
MORGAN STREET				
STA.	16+77.35	12'	RT	21.8
STA.	17+00.52	14'	RT	23.6
STA.	17+89.47	24'	RT	35.9
ASH STREET				
STA.	32+01.30	16'	LT	11.7
TOTAL=			130	

DRIVEWAY PAVEMENT REMOVAL				44000200
LOCATION		WIDTH	LT/RT	QUANTITY SQ YD
MAPLE ROW				
STA.	14+77.52	20'	RT	31.8
MORGAN STREET				
STA.	17+89.47	24'	RT	27.7
ASH STREET				
STA.	32+01.30	16'	LT	19.6
TOTAL=			79	

PORTLAND CEMENT CONCRETE SIDEWALK 4 INCH						42400100	
LOCATION			LT/RT	WIDTH	QUANTITY SQ FT		
WALNUT STREET							
STA.	10+11.98	TO	STA.	10+47.26	RT	VARIES	111.0
STA.	10+29.01	TO	STA.	10+32.13	LT	3'	32.0
STA.	10+76.14	TO	STA.	10+79.22	LT	3'	33.0
MORGAN STREET							
STA.	16+05.49	TO	STA.	16+59.26	RT	5'	215.0
STA.	17+19.60	TO	STA.	17+66.89	RT	5'	236.4
STA.	18+15.06	TO	STA.	18+74.61	RT	5'	300.0
ASH STREET							
STA.	30+12.45	TO	STA.	30+16.31	RT	VARIES	26.0
STA.	32+84.50	TO	STA.	32+90.52	RT	VARIES	22.0
TOTAL=					975		

CURB REMOVAL				44000300		
LOCATION			LT/RT	QUANTITY FOOT		
ASH STREET						
STA.	31+25.52	TO	STA.	32+56.61	RT	131.0
TOTAL=			131			

COMBINATION CURB AND GUTTER REMOVAL						44000500
LOCATION					LT/RT	QUANTITY FOOT
WALNUT STREET						
STA.	10+15.57	TO	STA.	11+46.22	LT	139.3
STA.	10+11.45	TO	STA.	11+28.73	RT	142.7
TOTAL=						282

SIDEWALK REMOVAL						44000600
LOCATION					LT/RT	QUANTITY SQ FT
WALNUT STREET						
STA.	10+11.98	TO	STA.	10+47.26	RT	139
STA.	10+29.01	TO	STA.	10+32.13	LT	32
STA.	10+76.14	TO	STA.	10+79.22	LT	33
ASH STREET						
STA.	30+12.45	TO	STA.	30+16.31	RT	26
STA.	32+84.50	TO	STA.	32+90.52	RT	19
TOTAL=						249

STORM SEWER REMOVAL 12"						50100500		
LOCATION				SIZE INCHES	LT/RT	OFFSET FEET	QUANTITY FOOT	
MAPLE ROW								
STA.	15+81.05	TO	STA.	16+23.49	12	LT TO RT	14.9' TO 8.3'	47.6
ASH STREET								
STA.	29+67.00	TO	STA.	30+19.36	12	RT	25.7' TO 13.7'	53.7
TOTAL=							101	

INLETS, TYPE A, TYPE 37 GRATE				60237480
LOCATION		LT/RT	OFFSET FEET	QUANTITY EACH
ASH STREET				
STA.	30+20.36	RT	13.7'	1
TOTAL=				1

INLETS, TYPE G-1				60241800
LOCATION		LT/RT	OFFSET FEET	QUANTITY EACH
MAPLE ROW				
STA.	13+25.00	LT	17.58'	1
STA.	13+25.00	RT	17.58'	1
STA.	15+79.44	LT	19.01'	1
MORGAN STREET				
STA.	16+25.00	RT	9.2'	1
STA.	18+63.77	RT	9.1'	1
ASH STREET				
STA.	29+65.31	RT	26.35'	1
STA.	30+05.99	RT	21.73'	1
STA.	32+81.30	RT	15.2'	1
TOTAL=				8

COMBINATION CONCRETE CURB AND GUTTER, TYPE B-6.12						60603800
LOCATION					LT/RT	QUANTITY FOOT
WALNUT STREET						
STA.	10+15.57	TO	STA.	13+00.54	LT	306.9
STA.	10+47.10	TO	STA.	13+00.54	RT	240.1
MAPLE ROW						
STA.	13+00.54	TO	STA.	15+82.84	LT	302.0
STA.	13+00.54	TO	STA.	16+07.79	RT	269.8
MORGAN STREET						
STA.	16+07.79	TO	STA.	18+76.85	RT	248.4
ASH STREET						
STA.	30+01.25	TO	STA.	32+85.83	LT	256.2
STA.	30+01.11	TO	STA.	32+92.75	RT	305.9
TOTAL=						1929

PIPE CULVERT REMOVAL						50105220			
LOCATION				SIZE INCHES	TYPE	LT/RT	OFFSET FEET	QUANTITY FOOT	
WALNUT STREET									
STA.	11+78.64	TO	STA.	12+03.66	12	CMP	RT	16.5' TO 16.1'	25.0
STA.	12+32.42	TO	STA.	12+61.31	10	CMP	LT	17.2' TO 16.0'	29.1
MAPLE ROW									
STA.	13+59.92	TO	STA.	14+03.68	8	CMP	LT	15.0' TO 16.7'	43.8
STA.	14+66.09	TO	STA.	14+88.16	12	CMP	RT	13.2' TO 12.8'	22.1
MORGAN STREET									
STA.	16+66.56	TO	STA.	16+87.34	8	CMP	RT	8.3' TO 8.0'	20.8
STA.	16+93.16	TO	STA.	17+06.46	8	CMP	RT	8.1' TO 8.0'	13.3
STA.	17+77.53	TO	STA.	18+08.78	8	CMP	RT	7.1' TO 6.4'	31.3
ASH STREET									
STA.	31+89.77	TO	STA.	32+19.68	12	CMP	LT	19.2' TO 17.2'	30.0
TOTAL=								215	

FRAME AND GRATES (INLET G-1)				60405500
LOCATION		LT/RT	OFFSET FEET	QUANTITY EACH
MAPLE ROW				
STA.	13+25.00	LT	17.58'	1
STA.	13+25.00	RT	17.58'	1
STA.	15+79.44	LT	19.01'	1
MORGAN STREET				
STA.	16+25.00	RT	9.2'	1
STA.	18+63.77	RT	9.1'	1
ASH STREET				
STA.	29+65.31	RT	26.35'	1
STA.	30+05.99	RT	21.73'	1
STA.	32+81.30	RT	15.2'	1
TOTAL=				8

REMOVING INLETS				60500060
LOCATION		LT/RT	OFFSET FEET	QUANTITY EACH
MAPLE ROW				
STA.	15+81.05	LT	14.90'	1
MORGAN STREET				
STA.	16+23.49	RT	8.26'	1
ASH STREET				
STA.	29+67.00	RT	25.73'	1
STA.	30+20.36	RT	13.70'	1
STA.	32+87.51	LT	24.43'	1
TOTAL=				5

TRAFFIC CONTROL COMPLETE		70103700
LOCATION		QUANTITY L SUM
ENTIRE PROJECT		1
TOTAL=		1

MOBILIZATION		67100100
LOCATION		QUANTITY L SUM
ENTIRE PROJECT		1
TOTAL=		1

AGGREGATE SURFACE COURSE, TYPE B							35101400
LOCATION	LT/RT	WIDTH	LENGTH	CU YD	CONVERSION 2.05 TON/CU YD	QUANTITY TON	
WALNUT STREET							
STA.	11+28.73	RT	24.0'	6.7'	3.6	7.3	
STA.	12+53.23	LT	24.0'	14.2'	8.3	16.9	
TOTAL=						24	

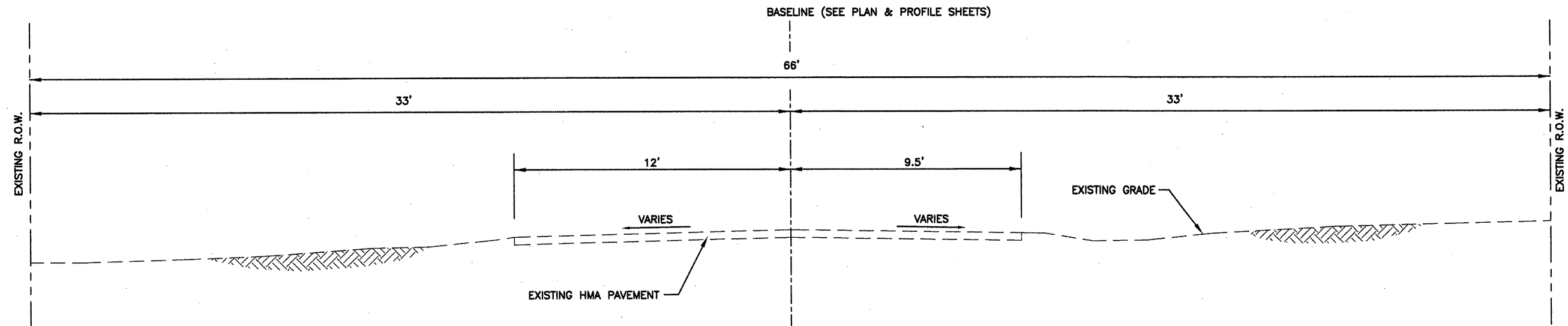
BITUMINOUS CONCRETE PAVEMENT PATCHING										Z0004300
LOCATION							WIDTH FEET	LENGTH FEET	DEPTH INCHES	QUANTITY TON
ASH STREET										
STA.	29+67.00	25.7' RT	TO	STA.	30+04.88	20.6' RT	3	38	5	21.1
STA.	32+81.30	15.2' RT	TO	STA.	32+85.59	26.2' LT	3	32	5	17.8
TOTAL=										39

HOT-MIX ASPHALT BASE COURSE WIDENING, 6"							35600700	
LOCATION						LT/RT	WIDTH	QUANTITY SQ YD
WALNUT STREET								
STA.	11+46.22	TO	STA.	13+01.00	LT	2' TO 5'	56.2	
STA.	11+47.34	TO	STA.	13+01.00	RT	2' TO 6'	79.4	
MAPLE ROW								
STA.	13+01.00	TO	STA.	15+86.00	LT	4'	147.2	
STA.	13+01.00	TO	STA.	15+86.00	RT	6.5'	195.7	
MORGAN STREET								
STA.	15+86.00	TO	STA.	18+82.20	RT	2.5' TO 5'	103.3	
ASH STREET								
STA.	30+02.00	TO	STA.	31+17.00	LT	4' TO 7'	91.4	
STA.	30+02.00	TO	STA.	31+17.00	RT	2' TO 5'	64.6	
STA.	31+17.00	TO	STA.	32+88.33	LT	3.0' TO 5.0'	72.4	
TOTAL=							810	

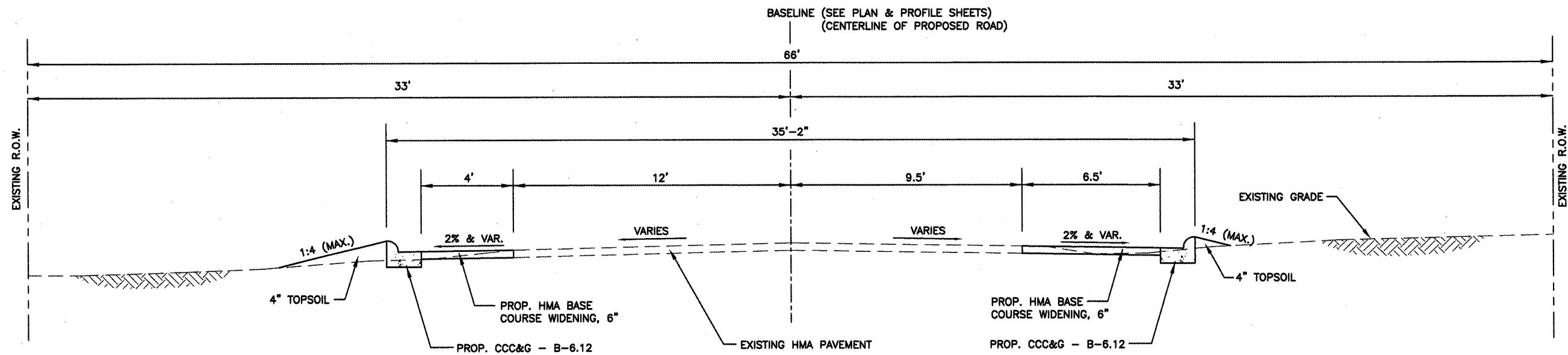
STORM SEWER PVC (SDR 26), 12"								XX003360
LOCATION							QUANTITY FOOT	
MAPLE ROW								
STA.	13+25.00	17' RT	TO	STA.	13+25.00	17' LT	34	
STA.	13+25.00	17' LT	TO	STA.	15+79.73	17.5' LT	264	
STA.	15+79.73	17.5' LT	TO	STA.	16+25.00	9.2' RT	53	
MORGAN STREET								
STA.	18+63.77	8.5' RT	TO	STA.	18+63.77	1.5' LT	10	
ASH STREET								
STA.	29+67.00	25.7' RT	TO	STA.	30+04.88	20.6' RT	38	
STA.	30+04.88	20.6' RT	TO	STA.	30+20.36	13.7' RT	17	
STA.	32+81.19	13.3' RT	TO	STA.	32+87.23	24.0' LT	38	
TOTAL=							454	

INLETS, TYPE B, TYPE 1 FRAME, OPEN LID				60240210
LOCATION	LT/RT	OFFSET FEET	QUANTITY EACH	
MORGAN STREET				
STA.	18+63.77	LT	1.8'	1
ASH STREET				
STA.	32+87.23	LT	24.0'	1
TOTAL=			2	

CONCRETE CURB, TYPE B						60600605
LOCATION					LT/RT	QUANTITY FOOT
MORGAN STREET						
STA.	16+22.59	TO	STA.	16+42.59	RT	20.0
TOTAL=						20

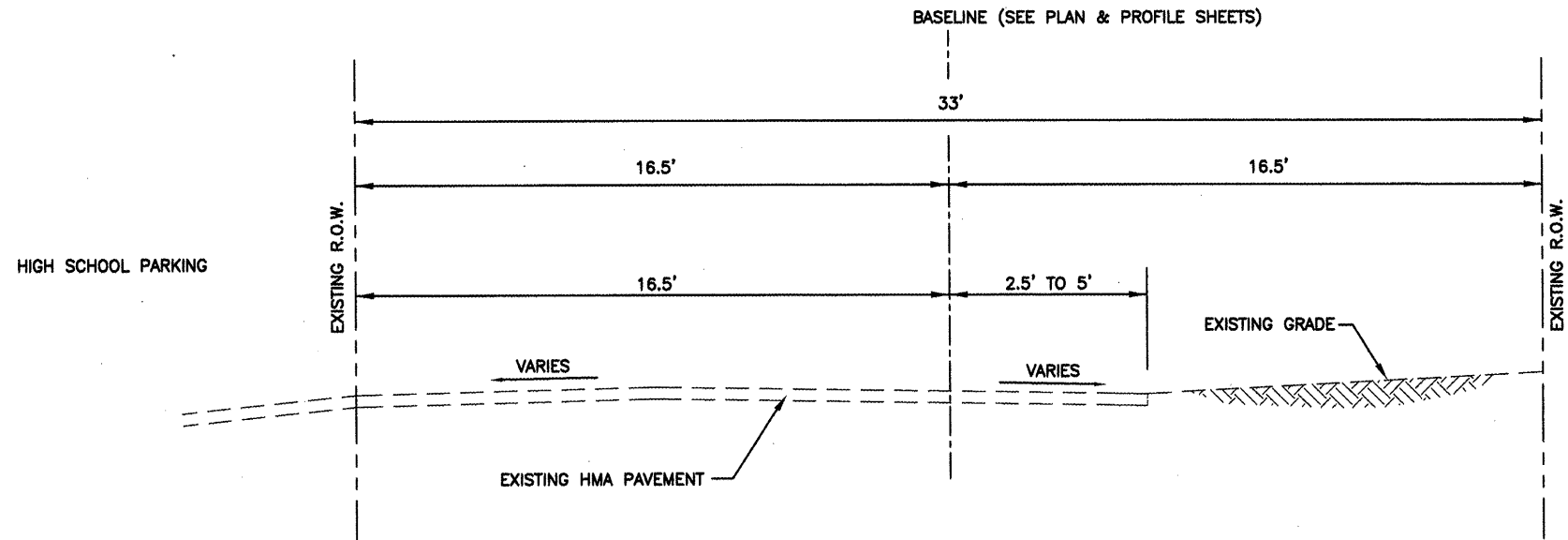


MAPLE ROW - EXISTING TYPICAL SECTION
 NOT TO SCALE
 STA. 13+01 TO STA. 15+86



MAPLE ROW - PROPOSED TYPICAL SECTION
 NOT TO SCALE
 STA. 13+01 TO STA. 15+86

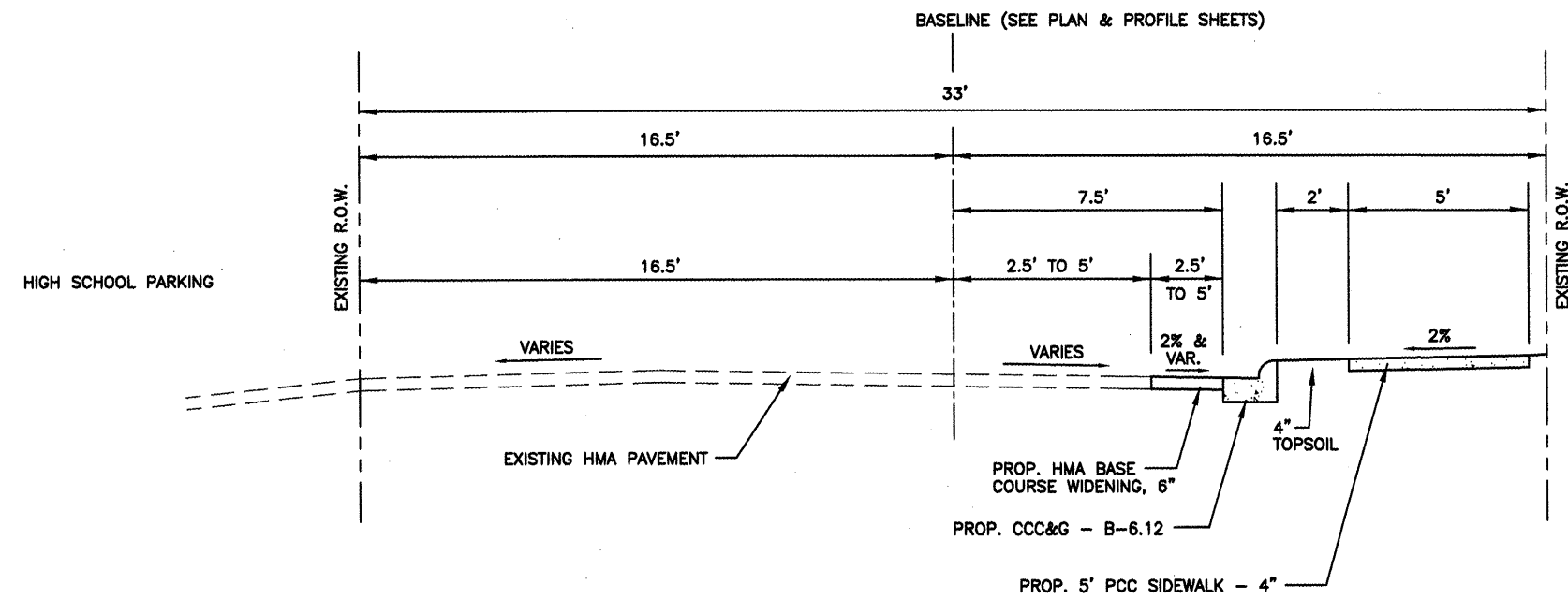
FILE NAME = \$FILEL\$	USER NAME = \$USER\$	DESIGNED --	REVISED --	TYPICAL SECTIONS MAPLE ROW	F.A. RTE.	SECTION	COUNTY	TOTAL SHEETS	SHEET NO.
	PLOT SCALE = \$SCALE\$	DRAWN --	REVISED --		08-00001-00-SW	PEORIA	33	9	
	PLOT DATE = \$DATE\$	CHECKED --	REVISED --		CONTRACT NO. 89507				
		DATE --	REVISED --		FED. ROAD DIST. NO. ILLINOIS FED. AID PROJECT				
SCALE: _____ SHEET NO. ____ OF ____ SHEETS STA. _____ TO STA. _____									



MORGAN STREET - EXISTING TYPICAL SECTION

NOT TO SCALE

STA. 15+86 TO STA. 19+25

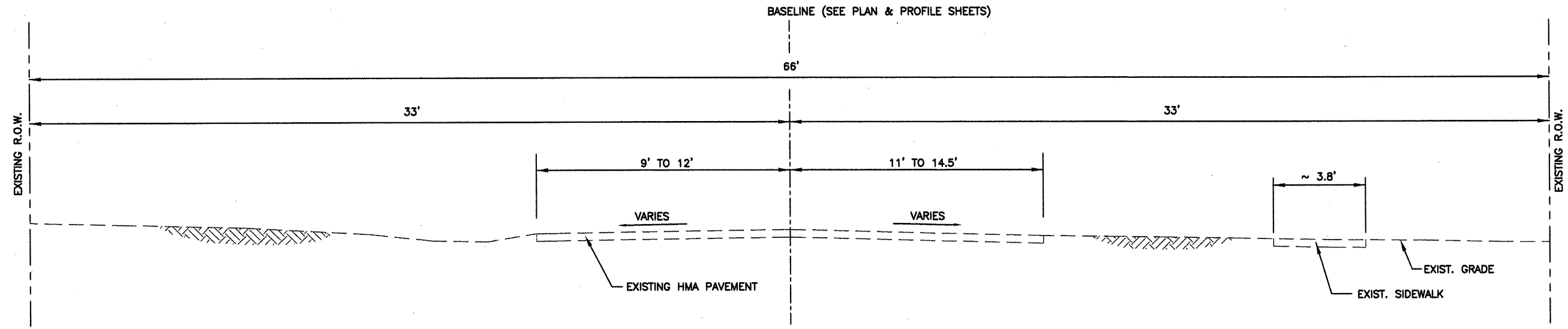


MORGAN STREET - PROPOSED TYPICAL SECTION

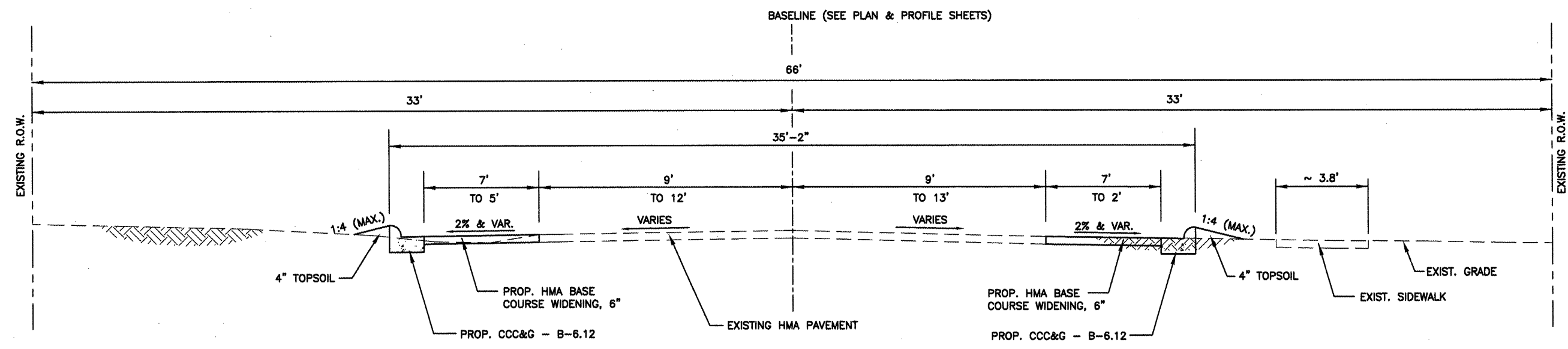
NOT TO SCALE

STA. 15+86 TO STA. 19+25

FILE NAME = \$FILEL\$	USER NAME = \$USERS\$	DESIGNED --	REVISED --	TYPICAL SECTIONS MORGAN STREET	F.A. RTE.:	SECTION	COUNTY	TOTAL SHEETS	SHEET NO.
		DRAWN --	REVISED --			08-00001-00-SW	PEORIA	33	10
		CHECKED --	REVISED --		SCALE: _____	CONTRACT NO. 89507			
		DATE --	REVISED --		SHEET NO. _____ OF _____ SHEETS	FED. ROAD DIST. NO. _____ ILLINOIS FED. AID PROJECT			



ASH - EXISTING TYPICAL SECTION
 STA. 30+02 TO STA. 31+17
 NOT TO SCALE

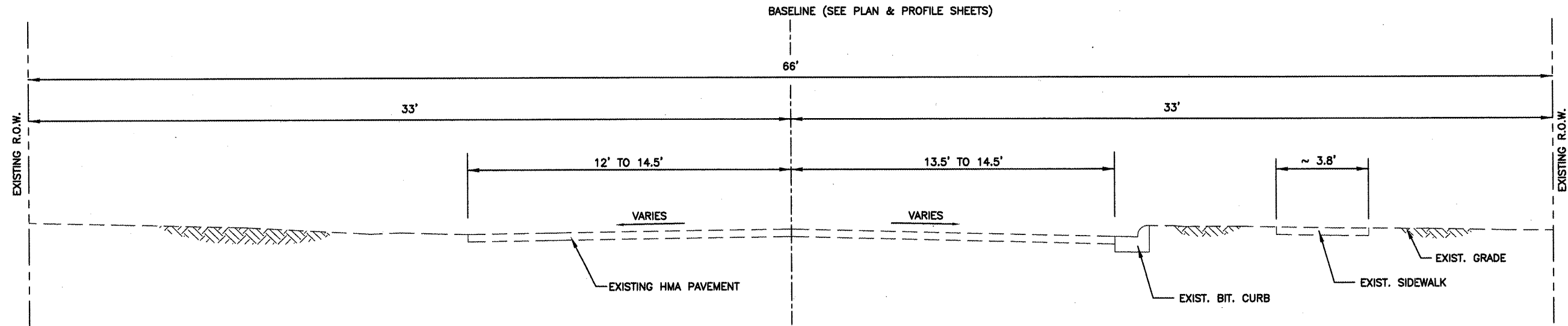


NOTE: DISTANCE BETWEEN PROPOSED EDGE OF PAVEMENT AND BASELINE VARIES FROM 18' LT & RT AT STA. 30+16.11 TO 18.69' LT & 13.31' RT AT STA. 32+71.87.

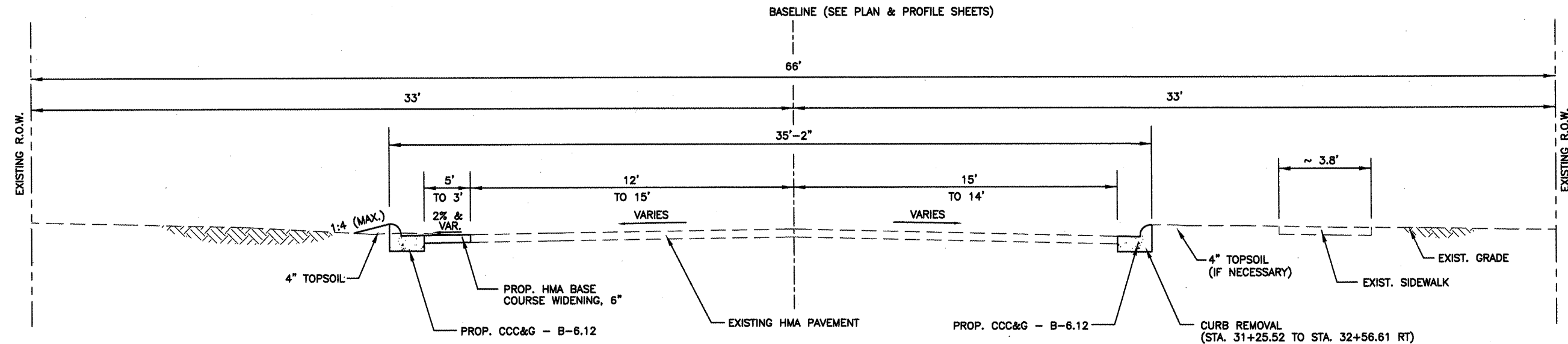
ASH - PROPOSED TYPICAL SECTION
 STA. 30+02 TO STA. 31+17
 NOT TO SCALE

NOTE: WHERE DISTANCE BETWEEN EDGE OF EXISTING PAVEMENT AND EDGE OF PROPOSED PAVEMENT IS LESS THAN 2', CONTRACTOR SHALL WIDEN CURB AND GUTTER TO FILL THE SPACE BETWEEN. HMA BASE COURSE WIDENING, 6" SHALL NOT BE LESS THAN 2' IN WIDTH.

FILE NAME =	USER NAME = \$USER\$	DESIGNED --	REVISED --	TYPICAL SECTIONS ASH STREET	F.A. RTE. --	SECTION	COUNTY	TOTAL SHEETS	SHEET NO.
\$FILEL\$		DRAWN --	REVISED --		08-00001-00-SW	PEORIA	33	11	
		CHECKED --	REVISED --		CONTRACT NO. 89507				
		DATE --	REVISED --		FED. ROAD DIST. NO. -- ILLINOIS FED. AID PROJECT				
SCALE: _____ SHEET NO. ___ OF ___ SHEETS STA. _____ TO STA. _____									



ASH - EXISTING TYPICAL SECTION
 STA. 31+17 TO STA. 32+91
 NOT TO SCALE



NOTE: DISTANCE BETWEEN PROPOSED EDGE OF PAVEMENT AND BASELINE VARIES FROM 16' LT & RT AT STA. 30+16.11 TO 18.69' LT & 13.31' RT AT STA. 32+71.87.

ASH - PROPOSED TYPICAL SECTION
 STA. 31+17 TO STA. 32+91
 NOT TO SCALE

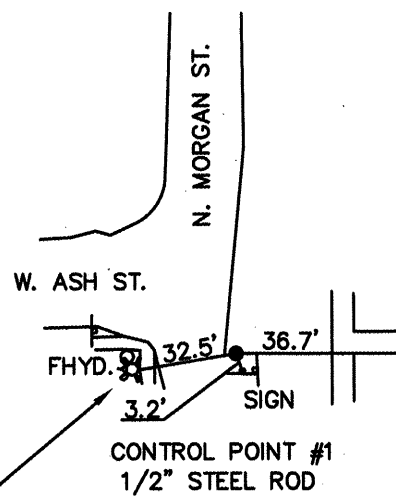
NOTE: WHERE DISTANCE BETWEEN EDGE OF EXISTING PAVEMENT AND EDGE OF PROPOSED PAVEMENT IS LESS THAN 2', CONTRACTOR SHALL WIDEN CURB AND GUTTER TO FILL THE SPACE BETWEEN. HMA BASE COURSE WIDENING, 6" SHALL NOT BE LESS THAN 2' IN WIDTH.

FILE NAME =	USER NAME = \$USER\$	DESIGNED --	REVISED --
\$FILEL\$		DRAWN --	REVISED --
		CHECKED --	REVISED --
		DATE --	REVISED --

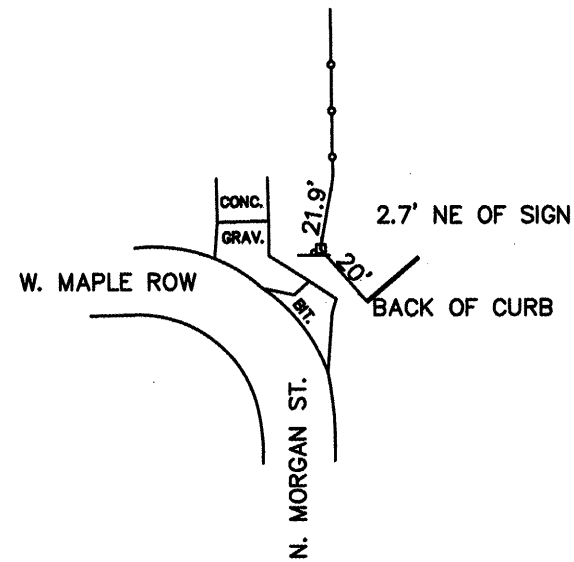
TYPICAL SECTIONS	
ASH STREET	
SCALE: _____	SHEET NO. _____ OF _____ SHEETS
STA. _____	TO STA. _____

F.A. RTE. --	SECTION	COUNTY	TOTAL SHEETS	SHEET NO.
	08-00001-00-SW	PEORIA	33	12
CONTRACT NO. 89507				
FED. ROAD DIST. NO. -- ILLINOIS FED. AID PROJECT				

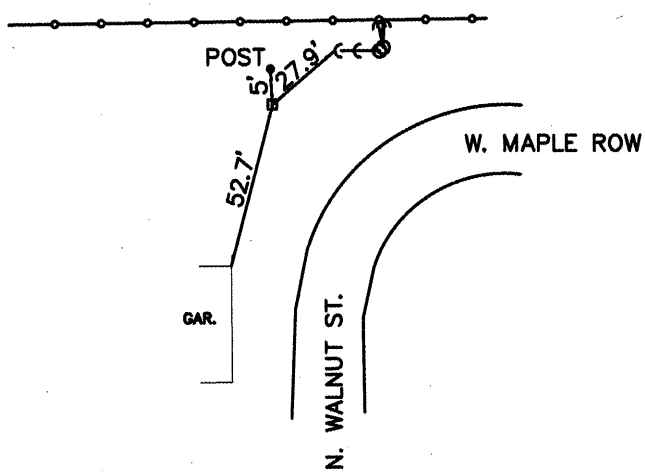
TBM - CAP BOLT MUE*LLER FIRE HYDRANT @ SW QUAD
 THE INTERSECTION OF N. MORGAN ST. AND W. ASH ST.
 INTERPOLATED ELEVATION FROM USGS QUAD 636.50



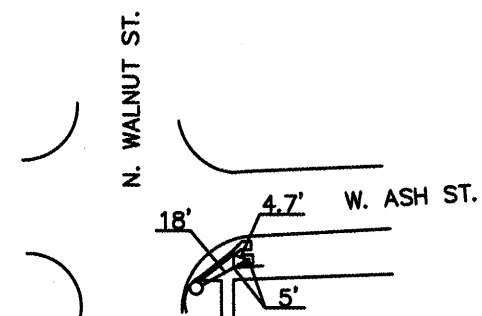
CONTROL POINT #1
 1/2" STEEL ROD
 N 10000.00
 E 10000.00
 ELEV. 633.10



CONTROL POINT #2
 HUB & TACK
 N 10344.1719
 E 9994.8085
 ELEV. 628.91



CONTROL POINT #3
 HUB & TACK
 N 10341.4237
 E 9645.3593
 ELEV. 633.44



CONTROL POINT #4
 HUB & TACK
 N 9999.9986
 E 9704.5036
 ELEV. 637.48

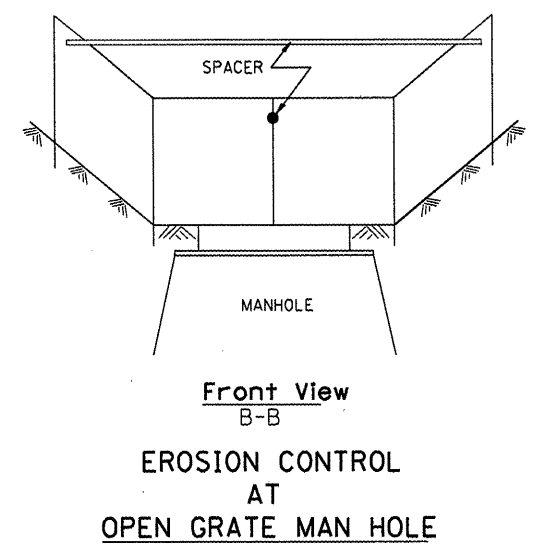
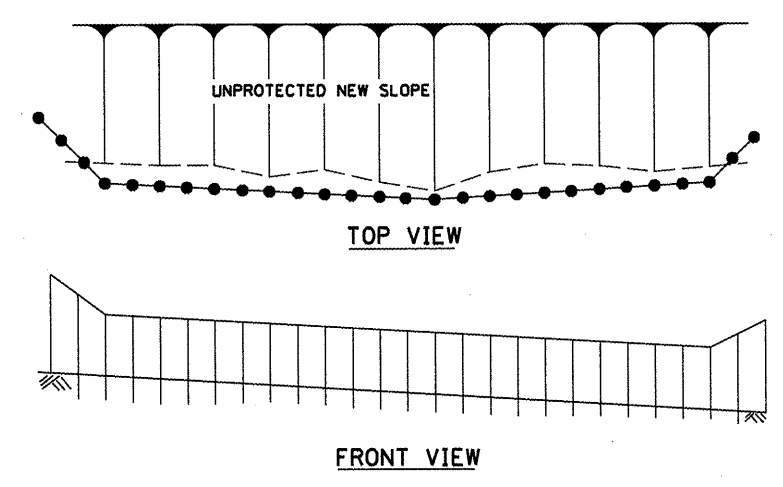
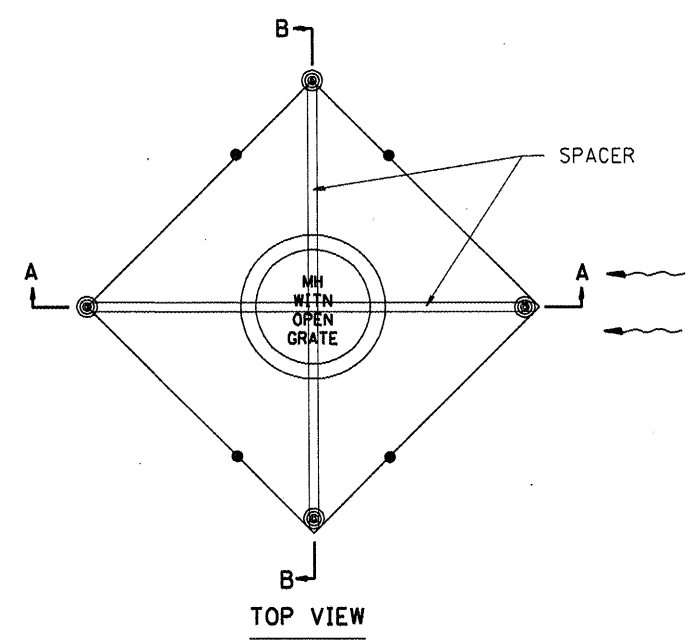
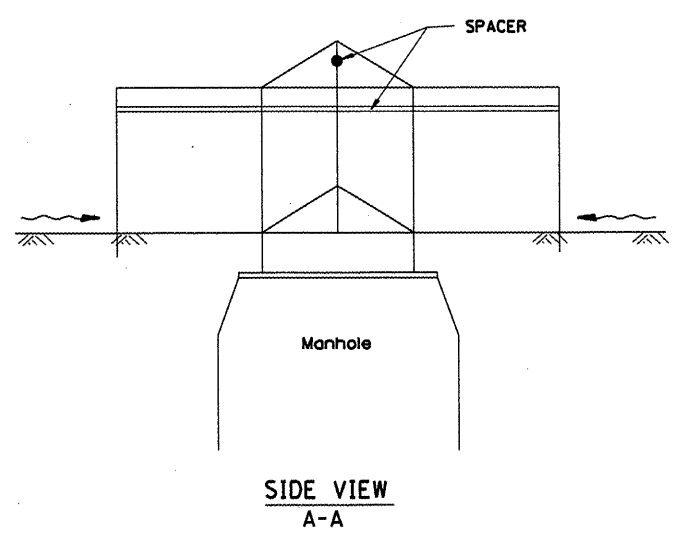
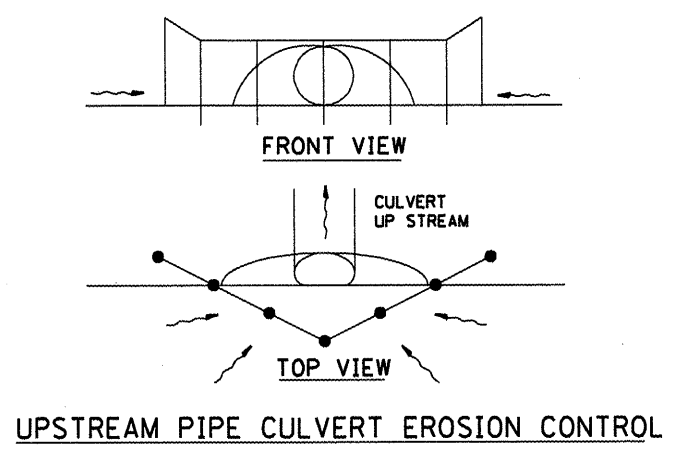
FILE NAME =	USER NAME = \$USER\$	DESIGNED --	REVISED --
\$FILEL\$		DRAWN --	REVISED --
	PLOT SCALE = \$SCALE\$	CHECKED --	REVISED --
	PLOT DATE = \$DATE\$	DATE --	REVISED --

HORIZONTAL AND VERTICAL CONTROL			
SCALE: _____	SHEET NO. ____ OF ____ SHEETS	STA. _____	TO STA. _____

F.A. RTE.	SECTION	COUNTY	TOTAL SHEETS	SHEET NO.
	08-00001-00-SW	PEORIA	33	13
CONTRACT NO. 89507				
FED. ROAD DIST. NO. -- ILLINOIS FED. AID PROJECT				

89507

F.A. RTE.	SECTION	COUNTY	TOTAL SHEETS	SHEET NO.
STA.	TO STA.			
FED. ROAD DIST. NO.	ILLINOIS FED. AID PROJECT			



GENERAL NOTES:

1. This work shall be performed in accordance with Sections 280 & 1081. of the Standard Specifications.
2. Additional Timber or Metal Post shall be installed, as needed.

All dimensions are in millimeters (inches) unless otherwise noted.

Designer NOTES:
 1. Designer to modify this Special Detail sheet, as needed, for inclusion in plans.
 2. Include Highway Standard 280001 "TEMPORARY EROSION CONTROL SYSTEM."

DATE	REVISIONS	BY
1-1-97	RENUM. 4-12.05, NEW REVISION BOX	T.P.
3-11-03	ELIMINATED SILT FENCE DITCH CHECK	M.M.A.

ILLINOIS DEPARTMENT OF TRANSPORTATION

SPECIAL DETAIL SHEET

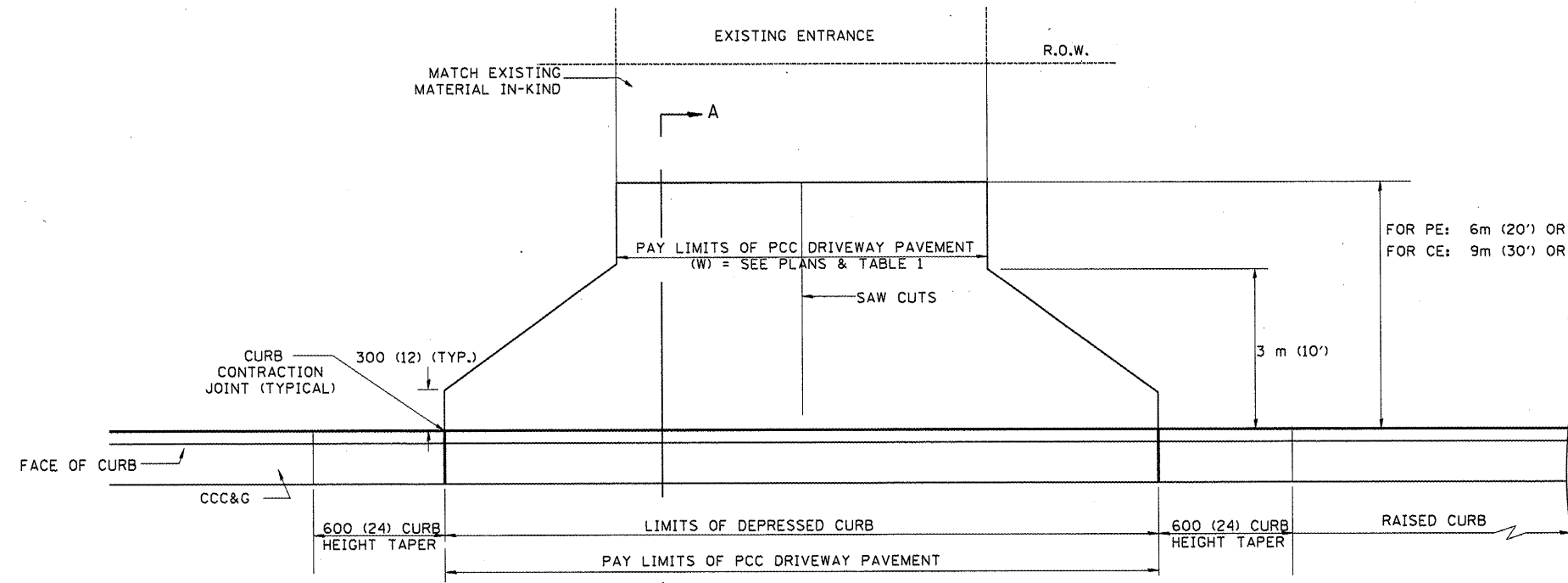
TYPICAL APPLICATION OF SILT FILTER FENCE

CADD DETAIL 280001-D4
SCALE: NOT DRAWN TO SCALE

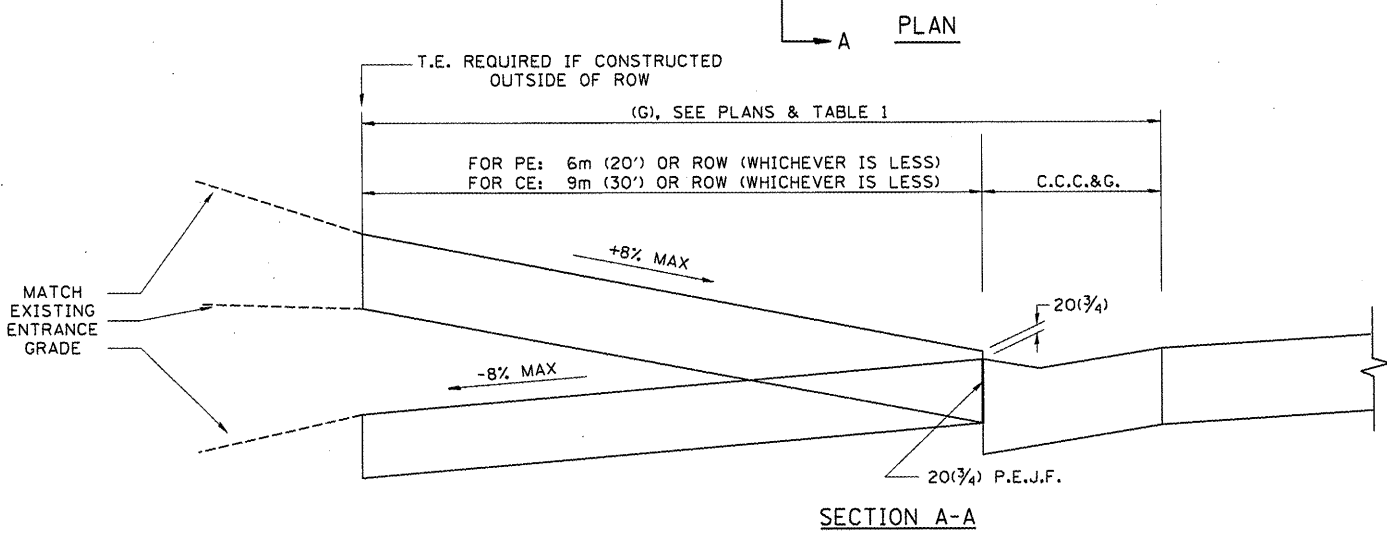
DRAWN BY CADD
CHECKED BY

89507

F.A. RTE.	SECTION	COUNTY	TOTAL SHEETS	SHEET NO.
STA.	TO STA.			
FED. ROAD DIST. NO.	ILLINOIS FED. AID PROJECT			



FOR PE: 6m (20') OR ROW (PE) (WHICHEVER IS LESS)
 FOR CE: 9m (30') OR ROW (CE) (WHICHEVER IS LESS)



GENERAL NOTES

1. COMBINATION CONCRETE CURB & GUTTER SHALL BE DEPRESSED IN ACCORDANCE WITH STANDARD 606001.
2. C.C.C. & G. WILL BE MEASURED FOR PAYMENT AS SPECIFIED IN ARTICLE 606.13 OF THE STANDARD SPECIFICATIONS.
3. C.C.C. & G. CONSTRUCTION JOINTS WILL BE AS SHOWN ON STANDARD 606001.
4. EXCEPTIONS TO THE RADIUS FLARE/PROPERTY LINE RELATIONSHIP ARE AS SHOWN IN THE PLANS FOR COMMON ENTRANCES, WITH JOINTLY EXECUTED ACCESS PERMITS.

ELEMENT	NON-COMMERCIAL		COMMERCIAL			
			1-WAY OPERATION		2-WAY OPERATION	
WIDTH (W)	3.6m(12')MIN.	7.2m(24')MAX.	4.3m(14')MIN.	7.2m(24')MAX.	7.2m(24')MIN.	10.7m(35')MAX.
RADIUS EQUIVALENT 1:1 FLARE (F)	1.5m(5')MIN.	7.6m(25')MAX.	4.6m(15')MIN.	12.0m(40')MAX.	4.6m(15')MIN.	12.0m(40')MAX.
MAX. GRADE (G)	8%		6%			

ALL DIMENSIONS IN mm (INCHES)
UNLESS OTHERWISE SHOWN

ILLINOIS DEPARTMENT OF TRANSPORTATION
DISTRICT CADD STANDARD

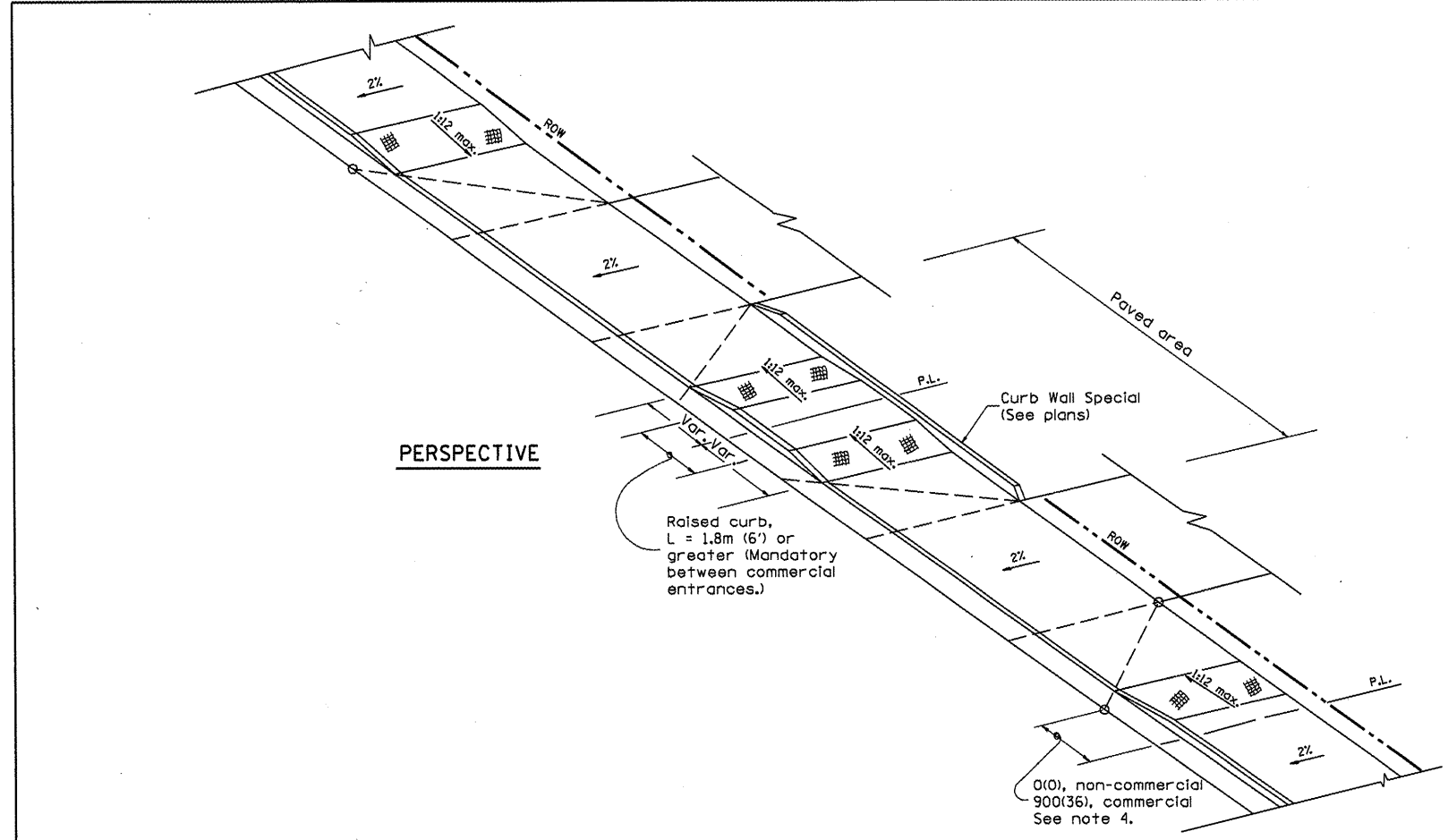
DATE	REVISIONS	BY
9-15-05	NEW DETAIL	M.M.A.

URBAN ENTRANCES
WITHOUT SIDEWALKS
CADD STD NO. 423002-D4
SCALE: NOT DRAWN TO SCALE
DATE: _____ DRAWN BY: _____
CHECKED BY: _____

89507

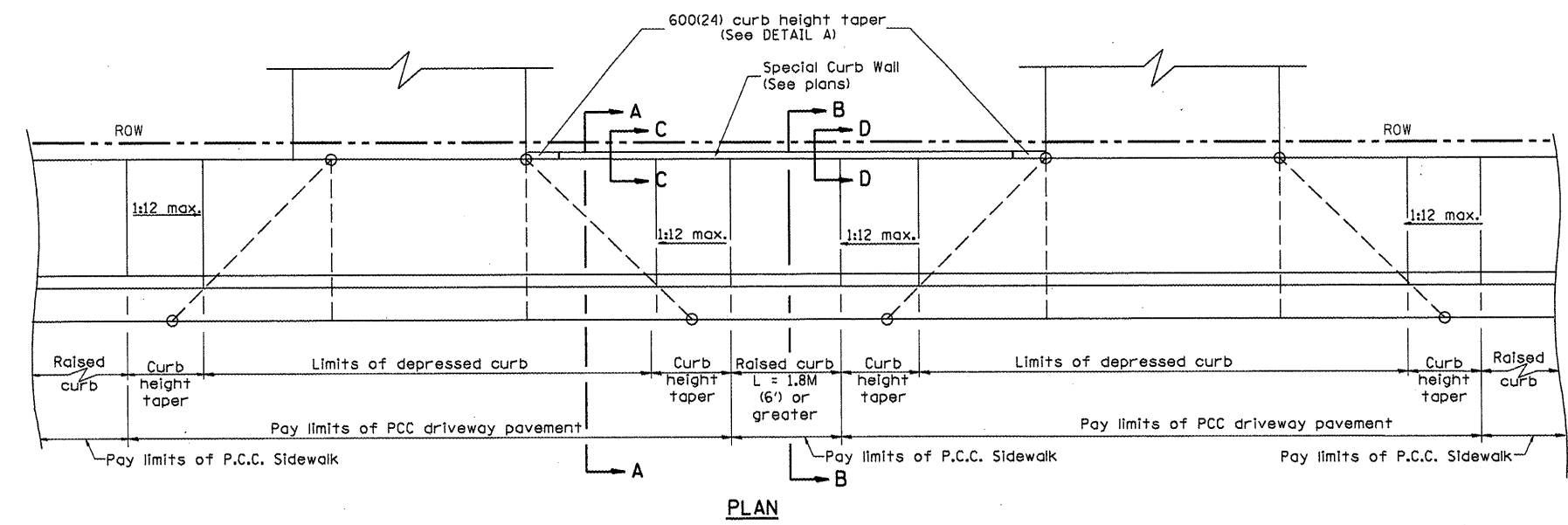
STATE	SECTION	COUNTY	TOTAL SHEETS	SHEET NO.
STA.	TO STA.			
FED. ROAD DIST. NO.	ILLINOIS FED. AID PROJECT			

DESIGNER NOTE
 1. THIS DRAWING SHOULD BE USED IN CONJUNCTION WITH DISTRICT CADD STD. "URBAN ENTRANCES, ACCESSIBLE TO THE DISABLED, FOR CURBLINE SIDEWALKS."
 2. THIS DRAWING IS FOR USE WHEN A LENGTH OF RAISED CURB OF L = 1.8M(6') OR GREATER CAN BE OBTAINED BETWEEN ENTRANCES.



GENERAL NOTES

1. Refer to State Standard 424001 for texturing and other disabled accessibility design elements.
2. The sidewalk area located within the pay limits of P.C.C. Driveway Pavement will be of the same thickness and construction as the P.C.C. Driveway Pavement.
3. Combination Concrete Curb & Gutter shall be depressed in accordance with Standard 606001.
4. Exceptions to the radius flare/property line relationship are as shown in the plans for common entrances, with jointly executed access permits.



All dimensions are in millimeters (inches) unless otherwise noted.

ILLINOIS DEPARTMENT OF TRANSPORTATION	
DISTRICT CADD STANDARD	
URBAN ENTRANCES SPECIAL DESIGN FOR CLOSELY SPACED ENTRANCES (WITH PAVEMENT EDGE CURB BETWEEN ENTRANCES)	
CADD STD NO. 423116-D4	SHEET 1 OF 2
SCALE: NOT TO SCALE	DRAWN BY: CADD
DATE	CHECKED BY: T. PICKERING

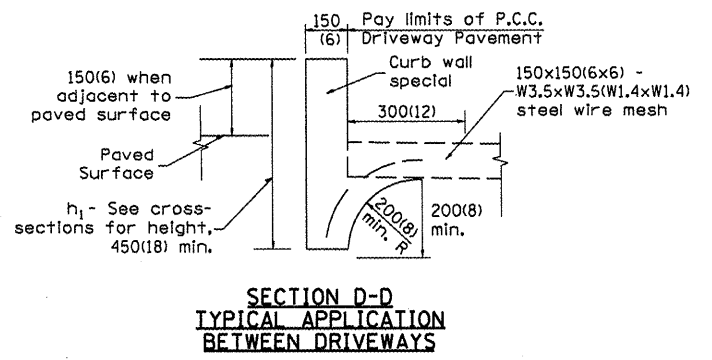
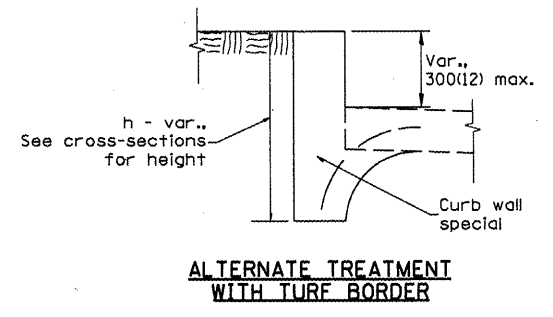
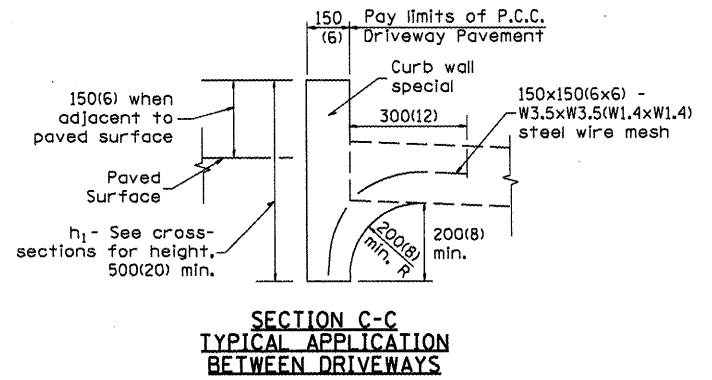
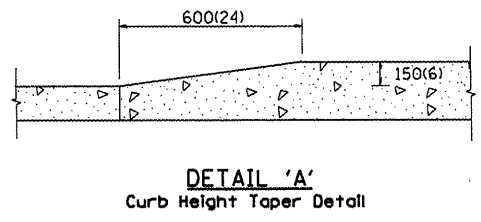
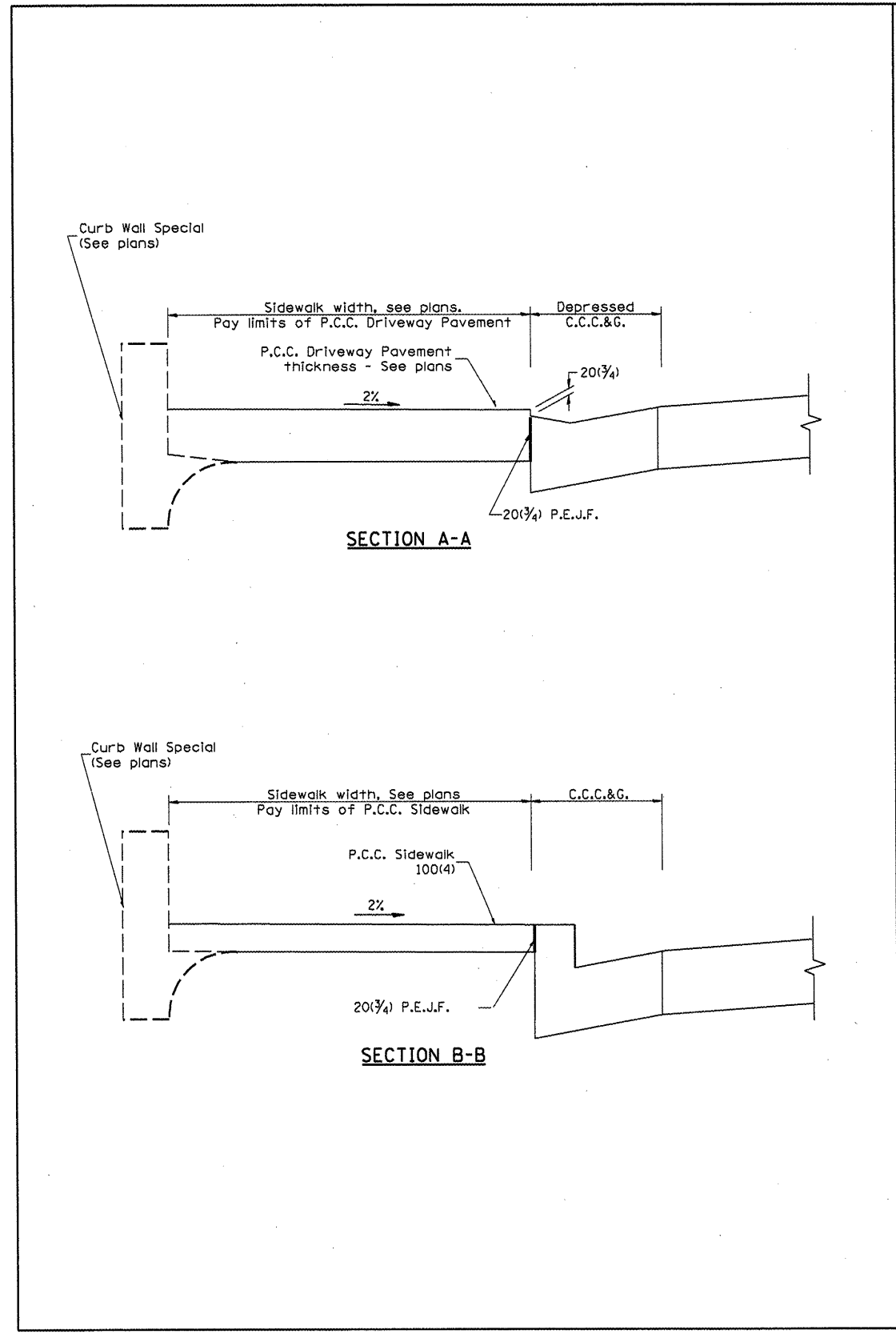
DATE	REVISIONS	BY
1-1-97	RENUM. C-103.07, NEW REV. BOX	T.P.
2-1-99	CORRECT SHEET 2 TITLE	J.A.

20 of 33

423116-D4 (1)

89507

F.A. RTE.	SECTION	COUNTY	TOTAL SHEETS	SHEET NO.
STA.	TO STA.			
FED. ROAD DIST. NO.	ILLINOIS FED. AID PROJECT			



CURB WALL - SPECIAL

Measurement formula: $h_1 \times \text{length constructed} = \text{Payment area in square meters (square feet)}$

GENERAL NOTES

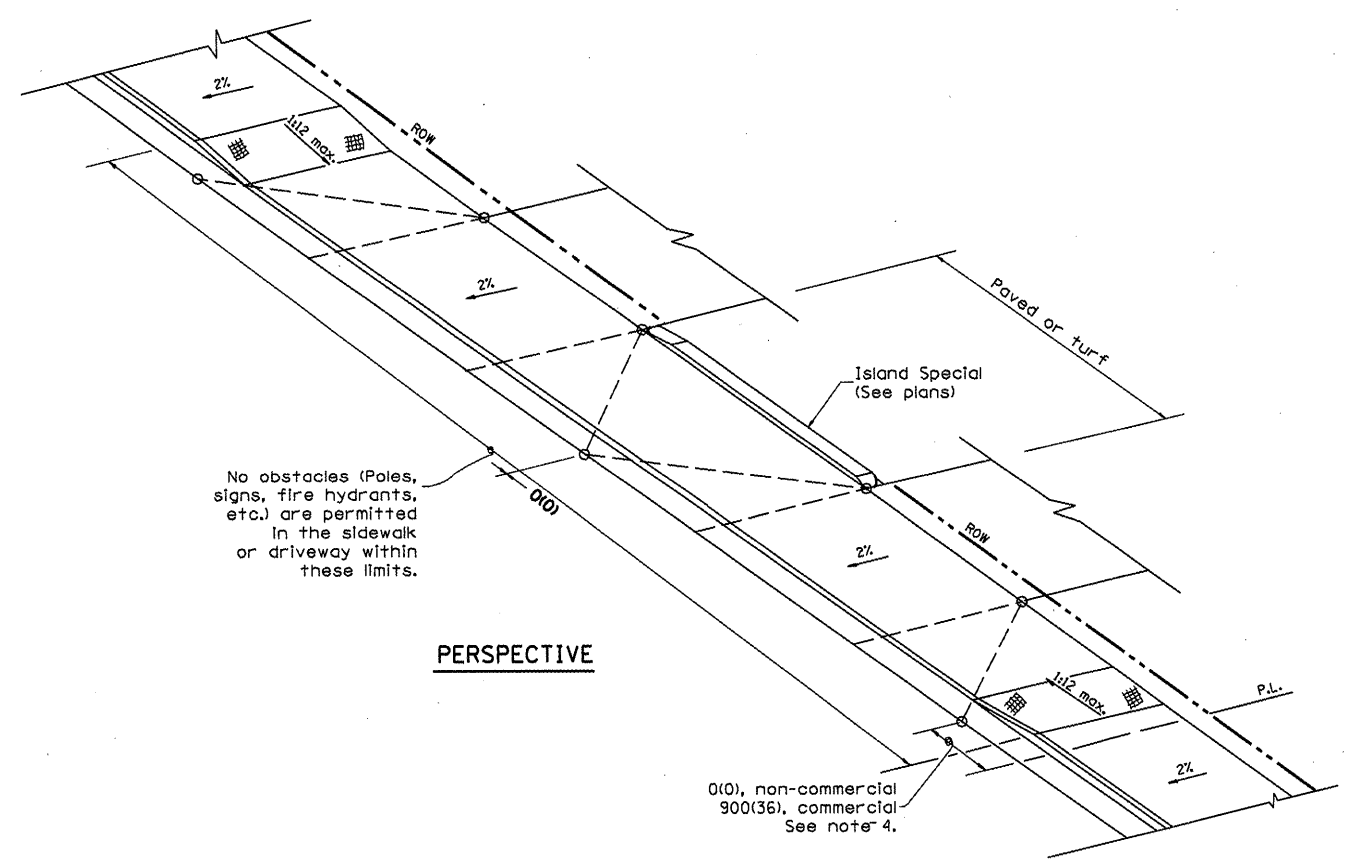
1. The Curb Wall, Special, shall be poured monolithically with the adjacent P.C.C. Driveway Pavement or P.C.C. Sidewalk.
2. All provisions of Sections 424 and 606 of the Standard Specifications shall apply unless otherwise shown.

All dimensions are in millimeters (inches) unless otherwise noted.

ILLINOIS DEPARTMENT OF TRANSPORTATION
**URBAN ENTRANCES
 SPECIAL DESIGN FOR
 CLOSELY SPACED ENTRANCES**
 (WITH PAVEMENT EDGE CURB BETWEEN ENTRANCES)
 CADD STD NO. 423116-D4 SHEET 2 OF 2
 SCALE: NOT TO SCALE DRAWN BY: CADD
 DATE: CHECKED BY: T. PICKERING

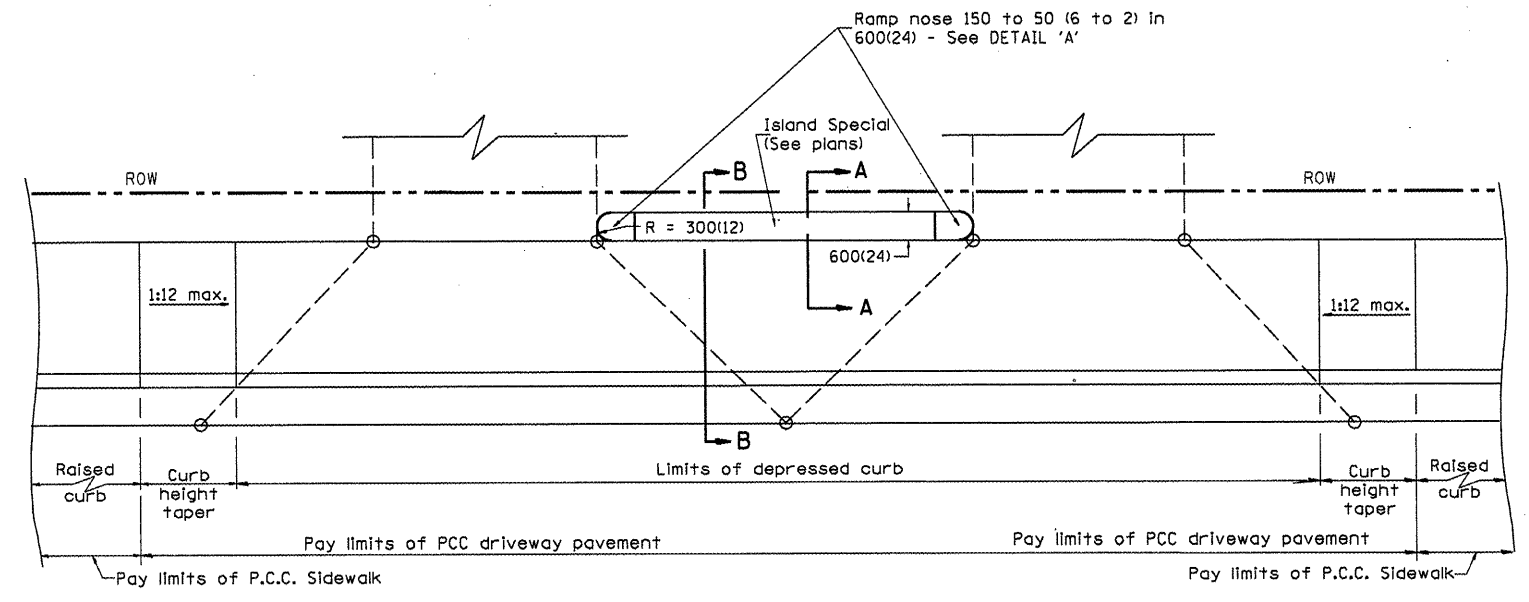
89507

F.A. RTE.	SECTION	COUNTY	TOTAL SHEETS	SHEET NO.
STA.		TO STA.		
FED. ROAD DIST. NO.		ILLINOIS FED. AID PROJECT		



GENERAL NOTES

1. Refer to State Standard 424001 for texturing and other disabled accessibility design elements.
2. The sidewalk area located within the pay limits of P.C.C. Driveway Pavement will be of the same thickness and construction as the P.C.C. Driveway Pavement.
3. Combination Concrete Curb & Gutter shall be depressed in accordance with Standard 606001.
4. Exceptions to the radius flare/property line relationship are as shown in the plans for common entrances, with jointly executed access permits.



DESIGNER NOTE
 1. THIS DRAWING SHOULD BE USED IN CONJUNCTION WITH DISTRICT CADD STD. "URBAN ENTRANCES, ACCESSIBLE TO THE DISABLED, FOR CURBLINE SIDEWALKS."
 2. THIS DRAWING IS FOR USE WHEN DISTANCE BETWEEN DRIVEWAY FLARES IS LESS THAN 1.8M(6').
 3. INCLUDE STATE STANDARD 424001 AND 606001.

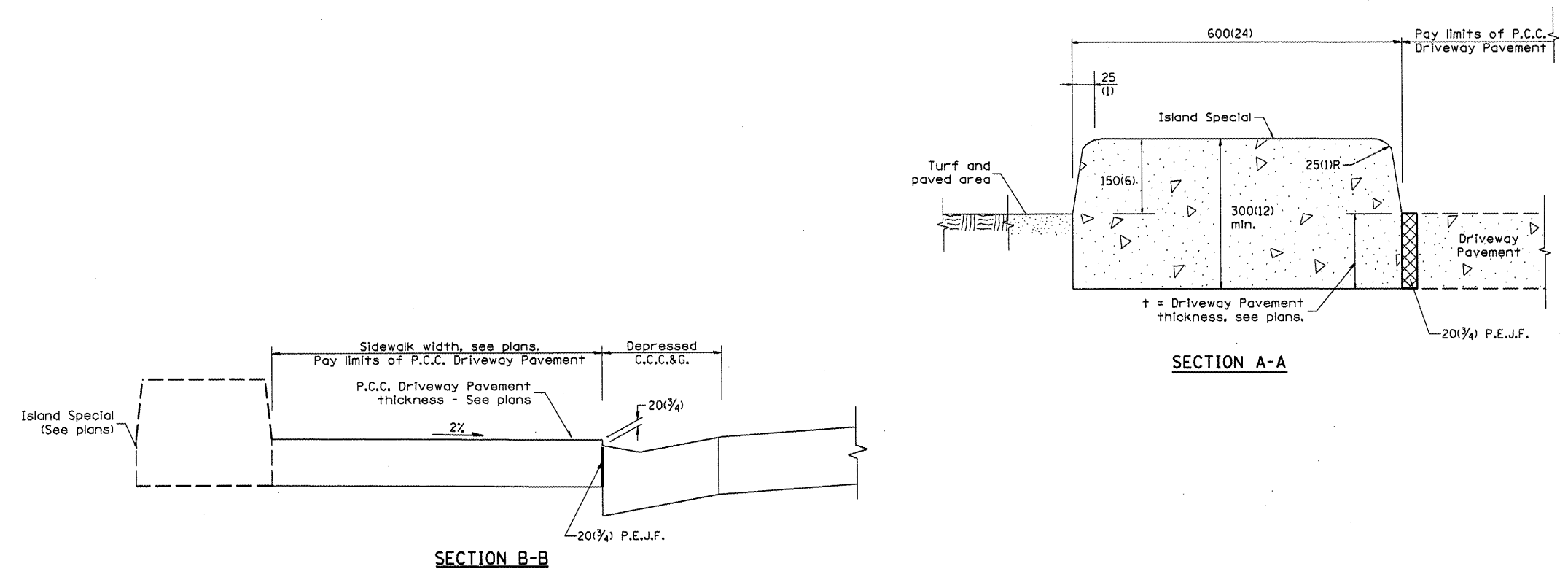
All dimensions are in millimeters (inches) unless otherwise noted.

ILLINOIS DEPARTMENT OF TRANSPORTATION		
DISTRICT CADD STANDARD		
URBAN ENTRANCES SPECIAL DESIGN FOR CLOSELY SPACED ENTRANCES		
(WITHOUT PAVEMENT EDGE CURB BETWEEN ENTRANCES)		
CADD STANDARD 423121-D4 SHEET 1 OF 2		
SCALE: NOT TO SCALE	DRAWN BY: CADD	
DATE	CHECKED BY: T. PICKERING	

DATE	REVISIONS	BY
1-1-97	RENUM. C-103.08, NEW REVISION BOX.	T.P.
	REVISED GENERAL NOTES	
2-1-99	REVISE DESIGNER NOTE & B-B SECTION	J.A.

89507

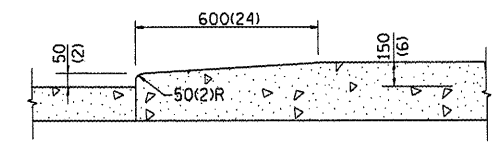
F.A. RTE.	SECTION	COUNTY	TOTAL SHEETS	SHEET NO.
STA.		TO STA.		
FED. ROAD DIST. NO.		ILLINOIS FED. AID PROJECT		



SECTION A-A

SECTION B-B

GENERAL NOTES
 1. All provisions in Section 606 of the Standard Specifications shall apply unless otherwise shown.



DETAIL 'A'
Nose ramping detail

ISLAND SPECIAL

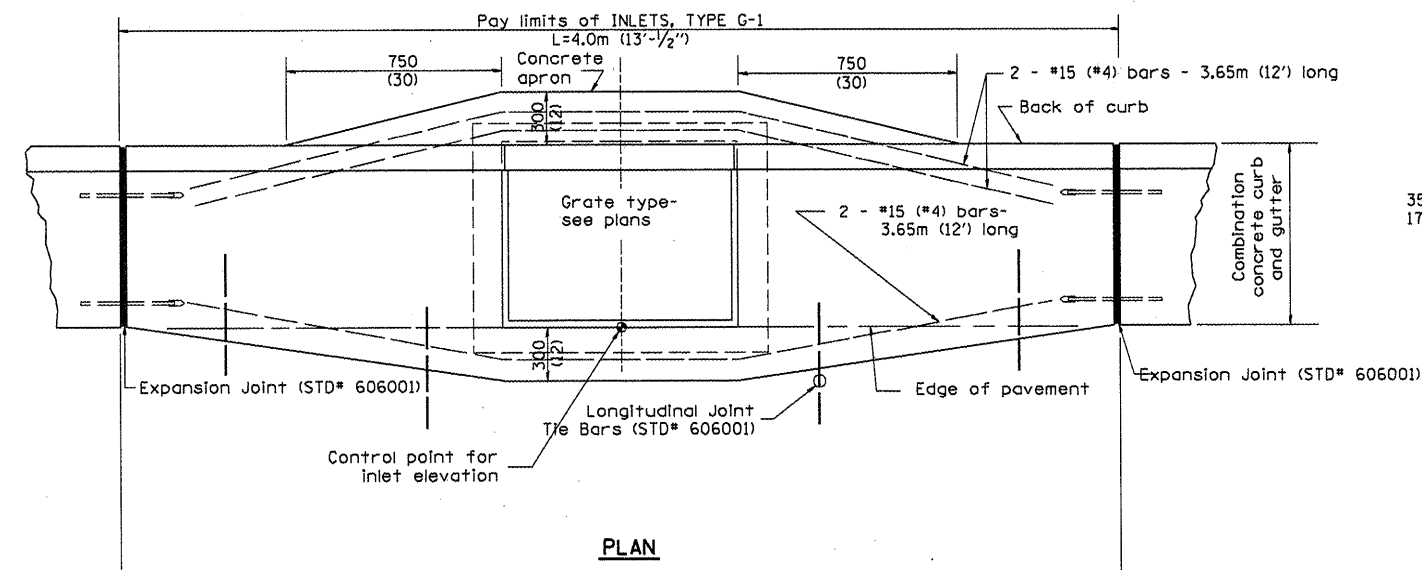
All dimensions are in millimeters (inches) unless otherwise noted.

ILLINOIS DEPARTMENT OF TRANSPORTATION	
DISTRICT CADD STANDARD	
URBAN ENTRANCES SPECIAL DESIGN FOR CLOSELY SPACED ENTRANCES	
(WITHOUT PAVEMENT EDGE CURB BETWEEN ENTRANCES)	
CADD STANDARD 423121-D4	SHEET 2 OF 2
SCALE: NOT TO SCALE	DRAWN BY: CADD
DATE	CHECKED BY: T. PICKERING

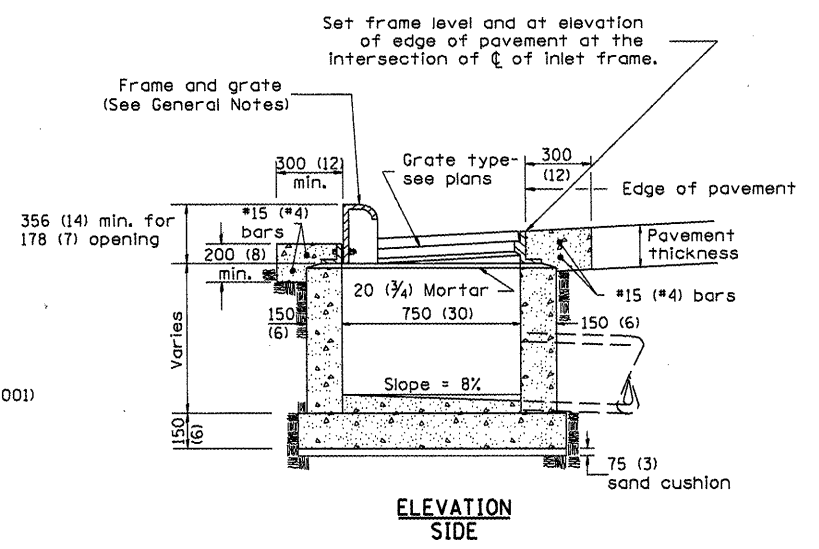
89507

F.A. RTE.	SECTION	COUNTY	TOTAL SHEETS	SHEET NO.
STA.	TO STA.			
FED. ROAD DIST. NO.	ILLINOIS	FED. AID PROJECT		

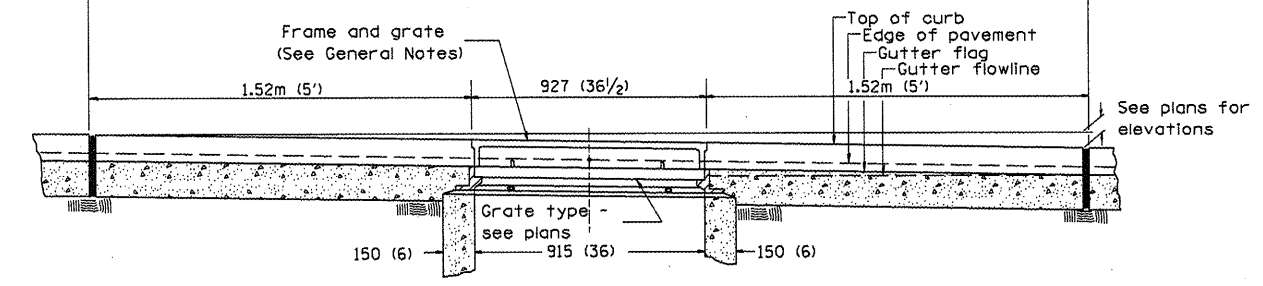
DESIGNER NOTES:
 1. Include State Standard 606001 for combination concrete curb and gutter details.
 2. Include State Standard 420001 for pavement joints.
 3. Include District CADD Standard for frame and grates and specify grate type in plans.
 4. Include District CADD Special Provision. Pay item includes transitional c.c.c & g. Inlet and frame and grate. All work within pay limits.
 5. The designer should include pavement removal quantities when the apron requires pavement removal.



PLAN



ELEVATION SIDE



ELEVATION FRONT

GENERAL NOTES

- Inlet construction shall be in accordance with Section 602 of the Standard Specifications.
- Combination Concrete Curb & Gutter shall be constructed in accordance with Section 606 of the Standard Specifications.
- See District CADD Standard 604001-D4 for frame and grates.

All dimensions are in millimeters (inches) unless otherwise noted.

DATE	REVISIONS	BY
11-97	RENUM. B-4.01, NEW REVISION BOX	T.P.
10-99	REVISION TO GENERAL NOTES	J.A.
2-00	REVISION TO DESIGNER NOTES	J.A.

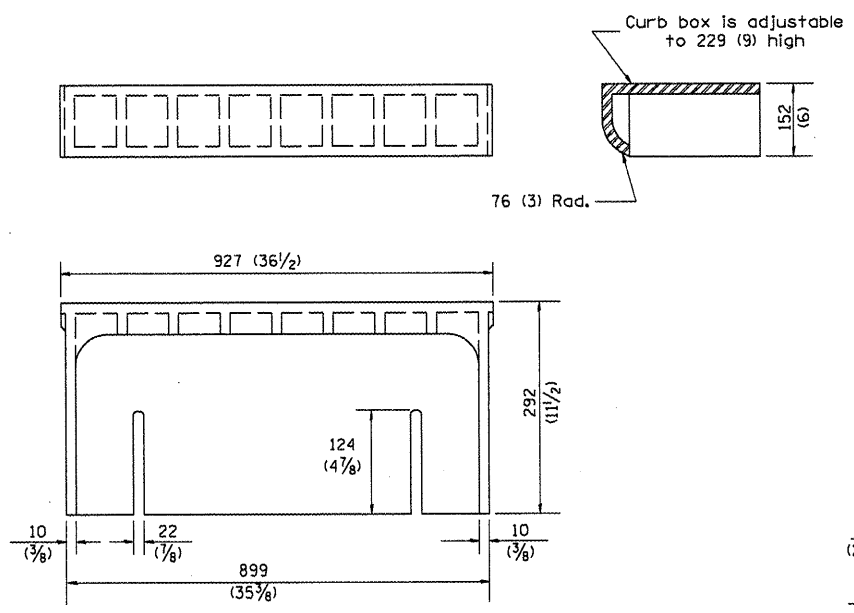
ILLINOIS DEPARTMENT OF TRANSPORTATION
 DISTRICT CADD STANDARD

INLETS, TYPE G-1

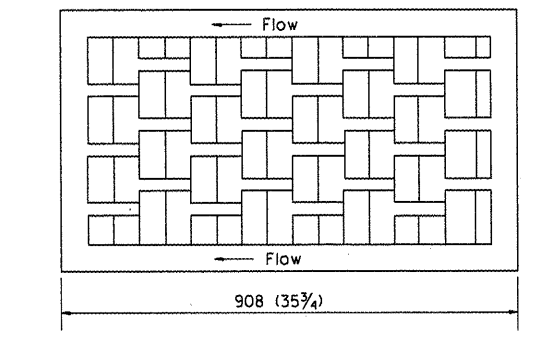
CADD STD NO. 602001-D4
 SCALE NOT TO SCALE
 DATE _____ DRAWN BY CADD
 CHECKED BY _____

89507

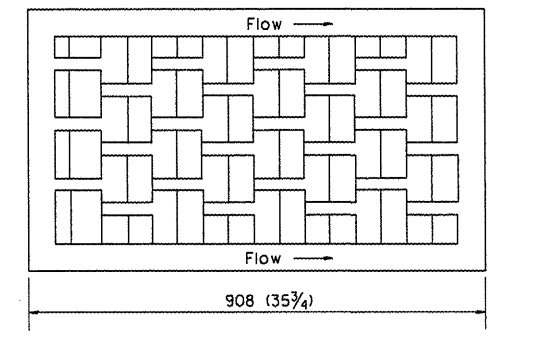
F.A. RTE.	SECTION	COUNTY	TOTAL SHEETS	SHEET NO.
STA.	TO STA.			
FED. ROAD DIST. NO.	ILLINOIS FED. AID PROJECT			



CAST CURB BOX
50 kg (110 lbs.)

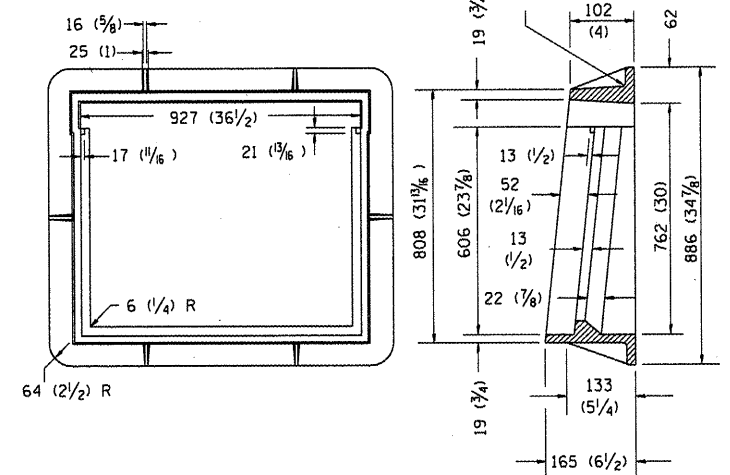
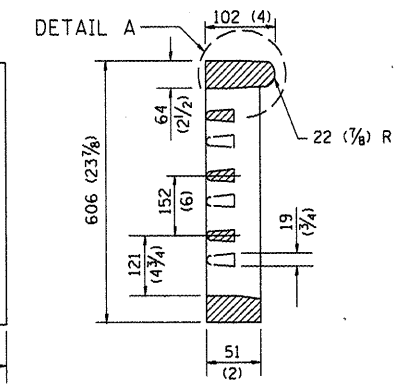


FLOW LEFT

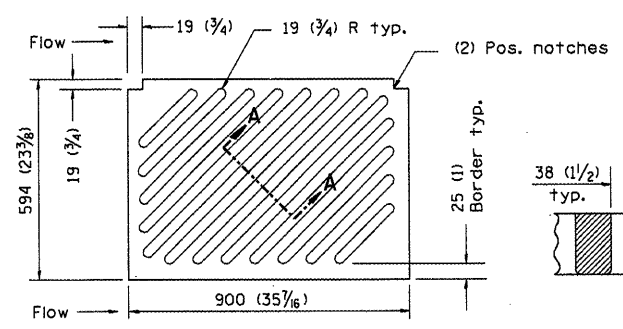


FLOW RIGHT

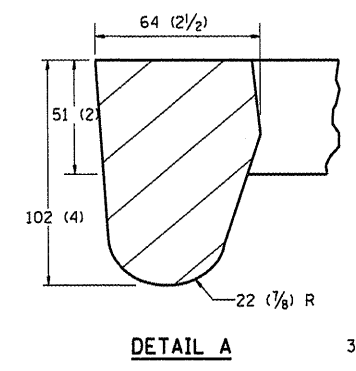
CAST VANE GRATES
(SPECIFY LEFT OR RIGHT FLOW)
104 KG (230 lbs.)



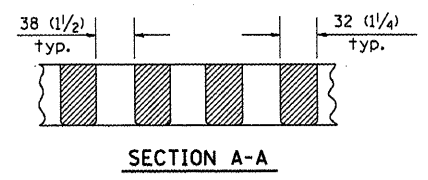
CAST FRAME
123 kg (271 lbs.)



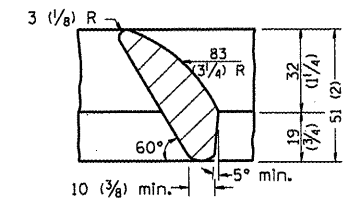
NOTE: Flow right shown
CAST DIAGONAL GRATE
(Reversible for flow)
98 kg (217 lbs.)



DETAIL A



SECTION A-A



DETAIL B

GENERAL NOTES

- The frame and grate shown on this drawing are for use with all TYPE G-1 and TYPE G-1, SPECIAL DRAINAGE STRUCTURES. See plans for grate type and flow direction.
- Flow direction: As viewed from street side.
- Material: cast gray iron.

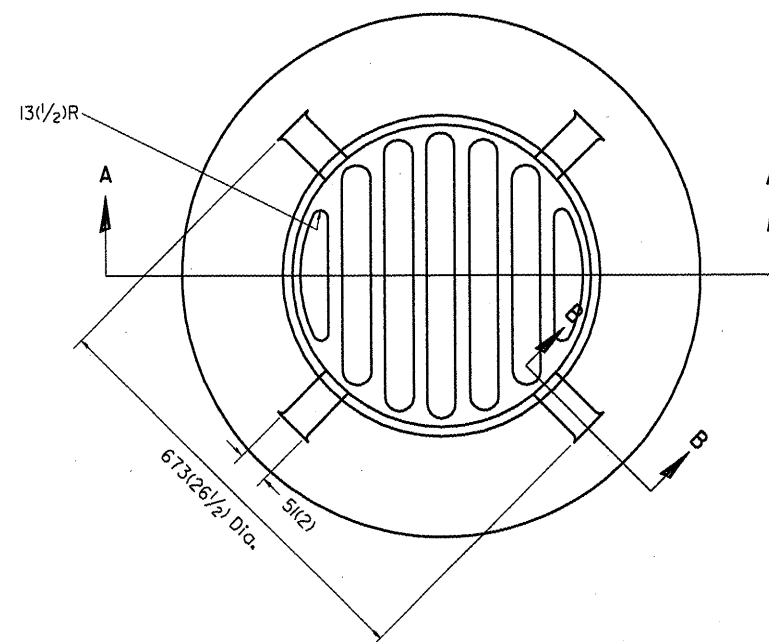
DATE	REVISIONS	BY
1-1-97	RENUM. B-10.01. NEW REVISION BOX	T.P.

All dimensions are in millimeters (inches) unless otherwise noted.	
ILLINOIS DEPARTMENT OF TRANSPORTATION	
DISTRICT CADD STANDARD	
FRAME AND GRATES FOR	
TYPE G-1 AND TYPE G-1, SPECIAL DRAINAGE STRUCTURES	
CADD STANDARD 604001-D4	
SCALE NOT TO SCALE	DRAWN BY CADD
DATE	CHECKED BY

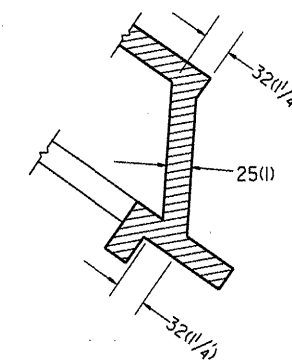
DESIGNER NOTES: 1. Include this standard with all Type G-1 and Type G-1, Special Drainage Structures.
2. Specify grate types and flow directions in plans.
3. These castings are included in the cost of the drainage structures as per District Special Provision.
4. This drawing is based upon "NEENAH" designs as follows: Inlet Frame: R-3246-A, Curb Box: R-3290, Reversible Diagonal Grate: R-3246-A, Vane Grates: R-3246-AL (flow left), R-3246-AL (flow right).

89507

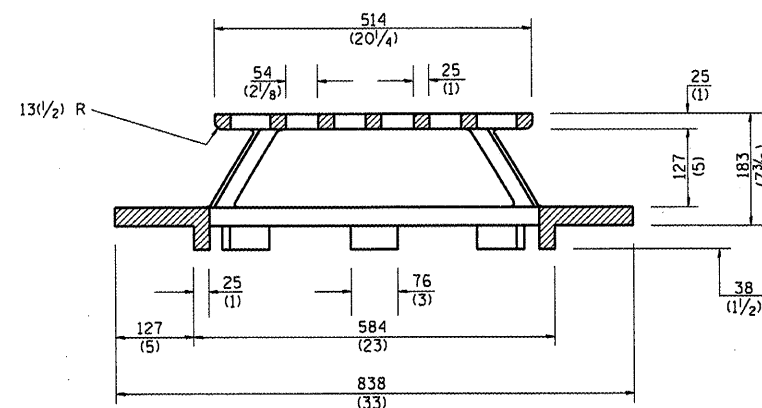
F.A. RTE.	SECTION	COUNTY	TOTAL SHEETS	SHEET NO.
STA.		TO STA.		
FED. ROAD DIST. NO.	ILLINOIS	FED. AID PROJECT		



PLAN



SECTION B - B



SECTION A - A

GENERAL NOTES

- MATERIAL - Cast Gray Iron
Weight 95 kg (209 lbs)

DESIGNER NOTE:
1. INCLUDE DISTRICT SPECIAL PROVISION.

All dimensions are in millimeters (inches) unless otherwise noted.

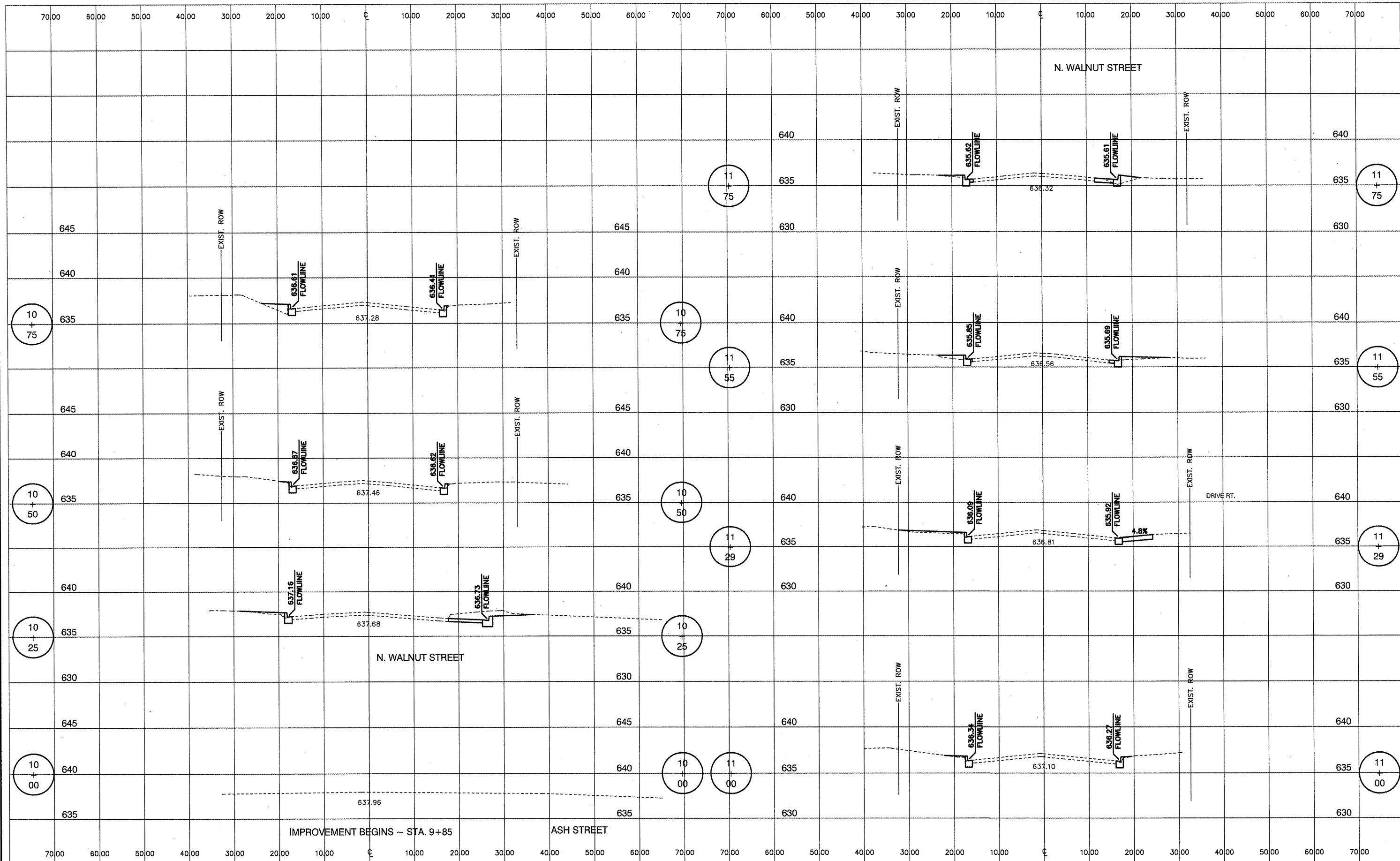
ILLINOIS DEPARTMENT OF TRANSPORTATION
DISTRICT CADD STANDARD

DATE	REVISIONS	BY
1-1-97	RENUM. B-10.02, NEW REVISION BOX	T.P.

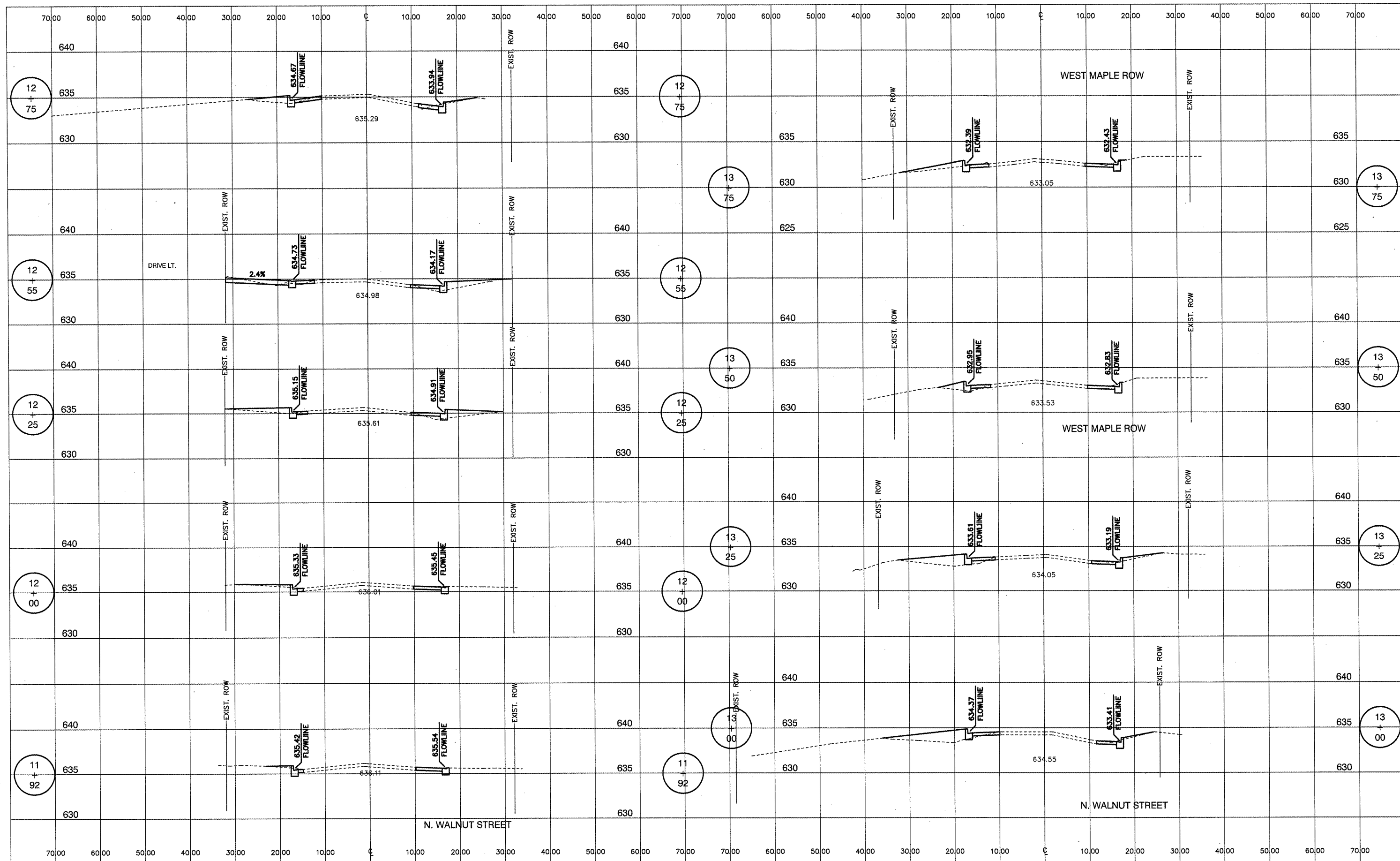
TYPE 37 GRATE

CADD STANDARD 604301-D4
SCALE NOT TO SCALE
DATE

DRAWN BY CADD
CHECKED BY



FILE NAME =	USER NAME = \$USERS\$	DESIGNED --	REVISED --	CROSS SECTIONS WALNUT STREET	F.A. RTE.	SECTION	COUNTY	TOTAL SHEETS	SHEET NO.
\$FILEL\$		DRAWN --	REVISED --		08-00001-00-SW	PEORIA	33	27	
		CHECKED --	REVISED --		CONTRACT NO. 89507				
		DATE --	REVISED --		FED. ROAD DIST. NO. ILLINOIS FED. AID PROJECT				
				SCALE: _____	SHEET NO. ____ OF ____ SHEETS		STA. _____ TO STA. _____		



FILE NAME =
\$FILEL\$

USER NAME = \$USER\$
PLOT SCALE = \$SCALE\$
PLOT DATE = \$DATE\$

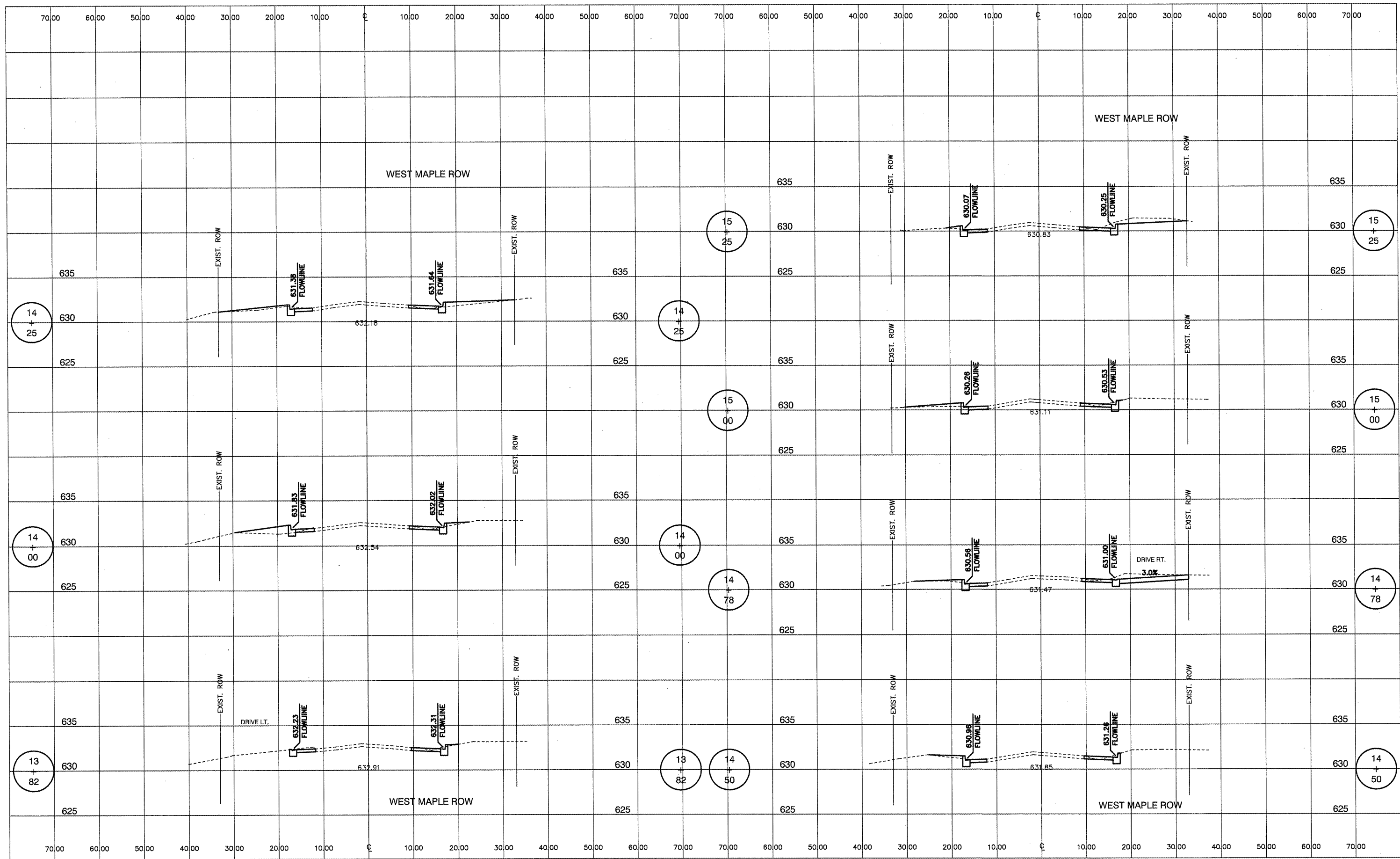
DESIGNED --
DRAWN --
CHECKED --
DATE --

REVISED --
REVISED --
REVISED --
REVISED --

CROSS SECTIONS
WALNUT STREET & MAPLE ROW

SCALE: _____ SHEET NO. ____ OF ____ SHEETS STA. _____ TO STA. _____

F.A. RTE.	SECTION	COUNTY	TOTAL SHEETS	SHEET NO.
	08-00001-00-SW	PEORIA	33	28
CONTRACT NO. 89507				
FED. ROAD DIST. NO. - ILLINOIS FED. AID PROJECT				

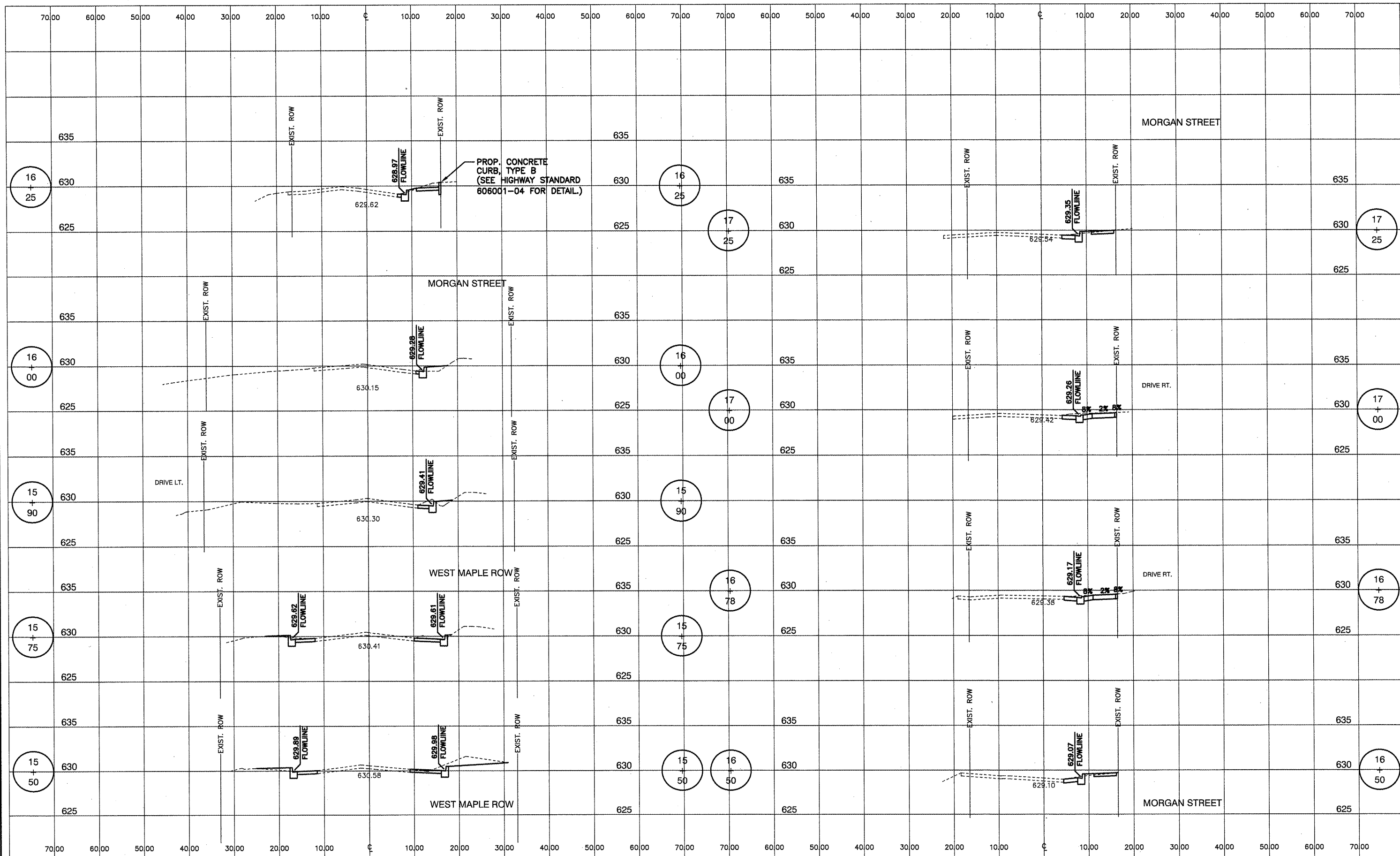


FILE NAME =	USER NAME = \$USER\$	DESIGNED --	REVISED --
\$FILEL\$		DRAWN --	REVISED --
	PLOT SCALE = \$SCALE\$	CHECKED --	REVISED --
	PLOT DATE = \$DATE\$	DATE --	REVISED --

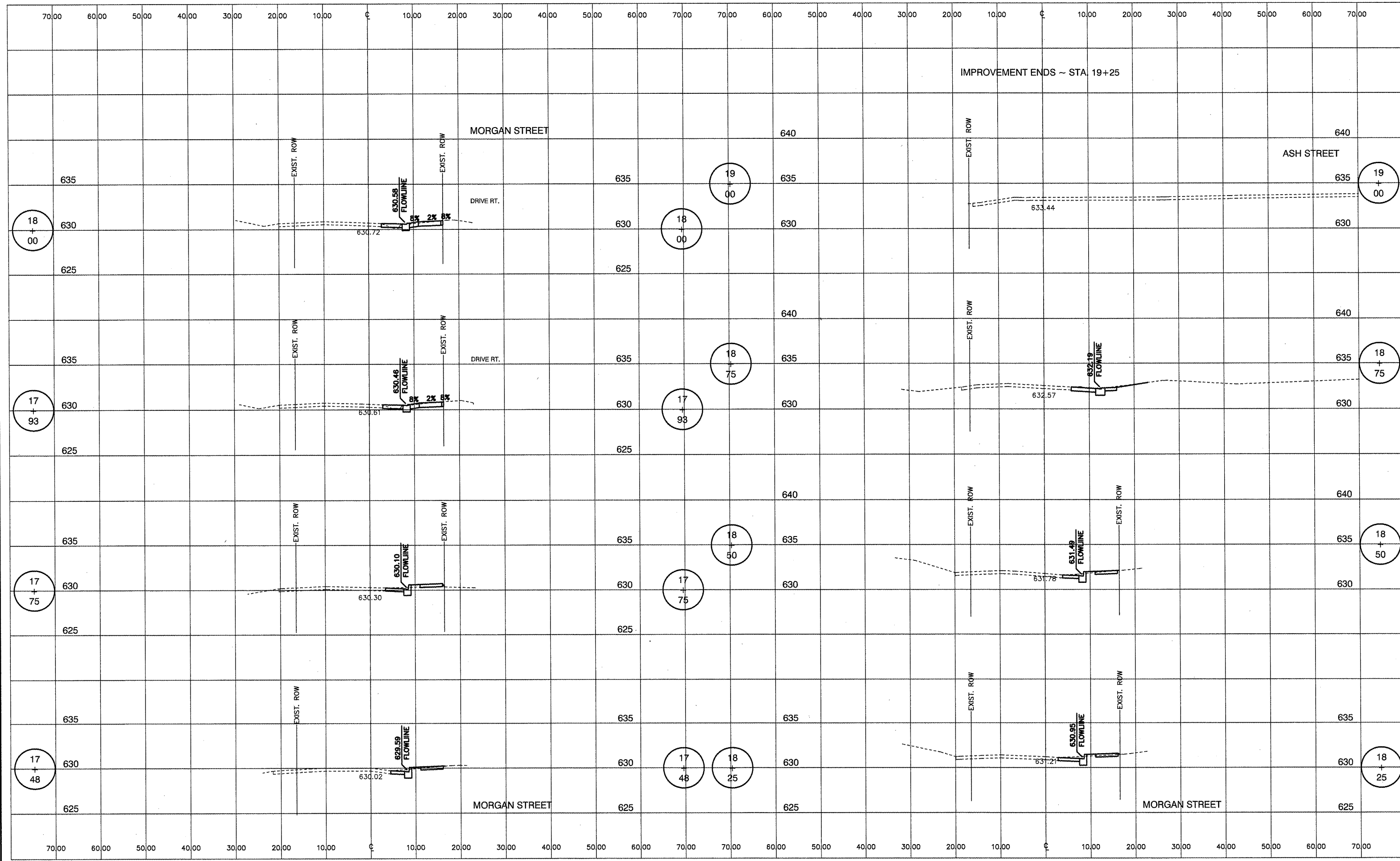
**CROSS SECTIONS
MAPLE ROW**

SCALE: _____ SHEET NO. ____ OF _____ SHEETS STA. _____ TO STA. _____

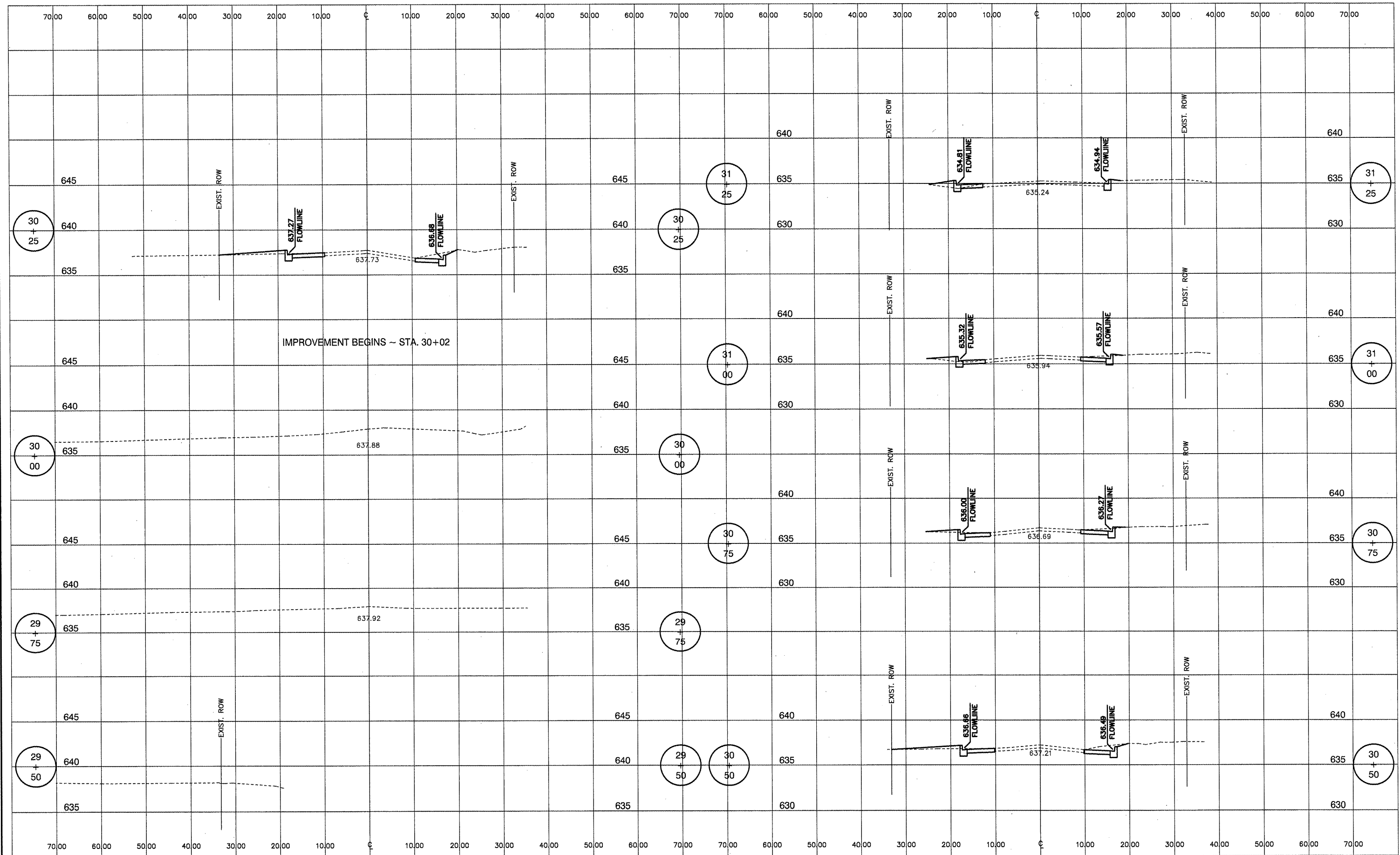
F.A. RTE.	SECTION	COUNTY	TOTAL SHEETS	SHEET NO.
	08-00001-00-SW	PEORIA	33	29
CONTRACT NO. 89507				
FED. ROAD DIST. NO. _____ ILLINOIS FED. AID PROJECT				



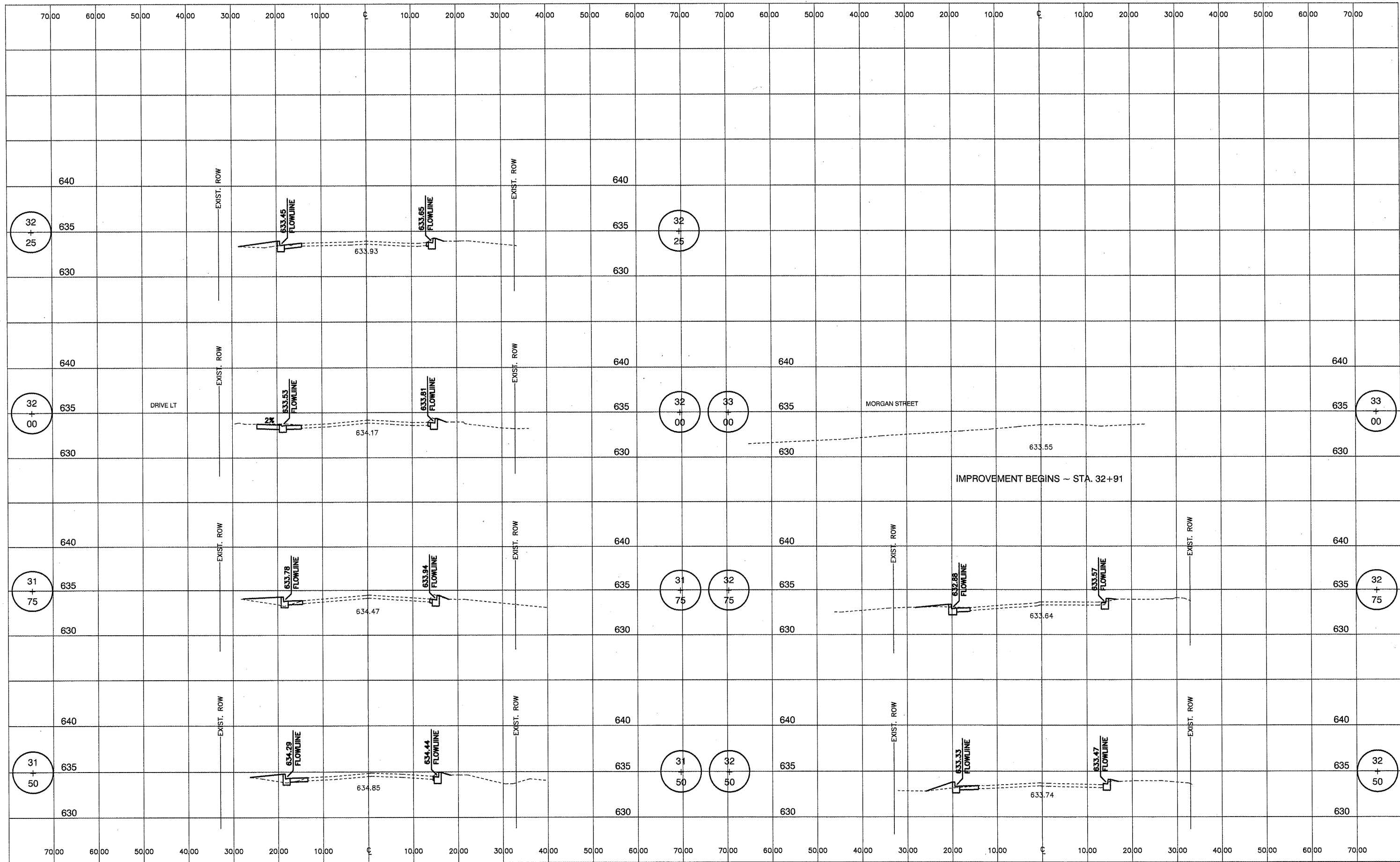
FILE NAME =	USER NAME = \$USER\$	DESIGNED --	REVISED --	CROSS SECTIONS MAPLE ROW & MORGAN STREET	F.A. RTE. --	SECTION	COUNTY	TOTAL SHEETS	SHEET NO.
\$FILEL\$		DRAWN --	REVISED --		08-00001-00-SW	PEORIA	33	30	
PLOT SCALE = \$SCALE\$		CHECKED --	REVISED --		CONTRACT NO. 89507				
PLOT DATE = \$DATE\$		DATE --	REVISED --		FED. ROAD DIST. NO. --	ILLINOIS FED. AID PROJECT			
SCALE: _____ SHEET NO. ____ OF ____ SHEETS STA. _____ TO STA. _____									



FILE NAME =	USER NAME = \$USER\$	DESIGNED --	REVISED --	CROSS SECTIONS MORGAN STREET	F.A. RTE.	SECTION	COUNTY	TOTAL SHEETS	SHEET NO.
\$FILEL\$		DRAWN --	REVISED --		08-00001-00-SW	PEORIA	33	31	
		CHECKED --	REVISED --		CONTRACT NO. 89507				
		DATE --	REVISED --		FED. ROAD DIST. NO. ILLINOIS FED. AID PROJECT				



FILE NAME =	USER NAME = \$USER\$	DESIGNED --	REVISED --	CROSS SECTIONS ASH STREET	F.A. RTE.:	SECTION	COUNTY	TOTAL SHEETS	SHEET NO.
\$FILE\$		DRAWN --	REVISED --		08-00001-00-SW	PEORIA	33	32	
	PLOT SCALE = \$SCALE\$	CHECKED --	REVISED --		CONTRACT NO. 89507				
	PLOT DATE = \$DATE\$	DATE --	REVISED --		FED. ROAD DIST. NO. _ ILLINOIS FED. AID PROJECT				
SCALE: _____ SHEET NO. ____ OF _____ SHEETS STA. _____ TO STA. _____									



FILE NAME =	USER NAME = \$USERS\$	DESIGNED --	REVISED --
\$FILEL\$		DRAWN --	REVISED --
		CHECKED --	REVISED --
		DATE --	REVISED --

SCALE: _____	SHEET NO. _____ OF _____ SHEETS	STA. _____ TO STA. _____
--------------	---------------------------------	--------------------------

**CROSS SECTIONS
ASH STREET**

F.A. RTE.	SECTION	COUNTY	TOTAL SHEETS	SHEET NO.
	08-00001-00-SW	PEORIA	33	33
CONTRACT NO. 89507				
FED. ROAD DIST. NO. _____ ILLINOIS FED. AID PROJECT				