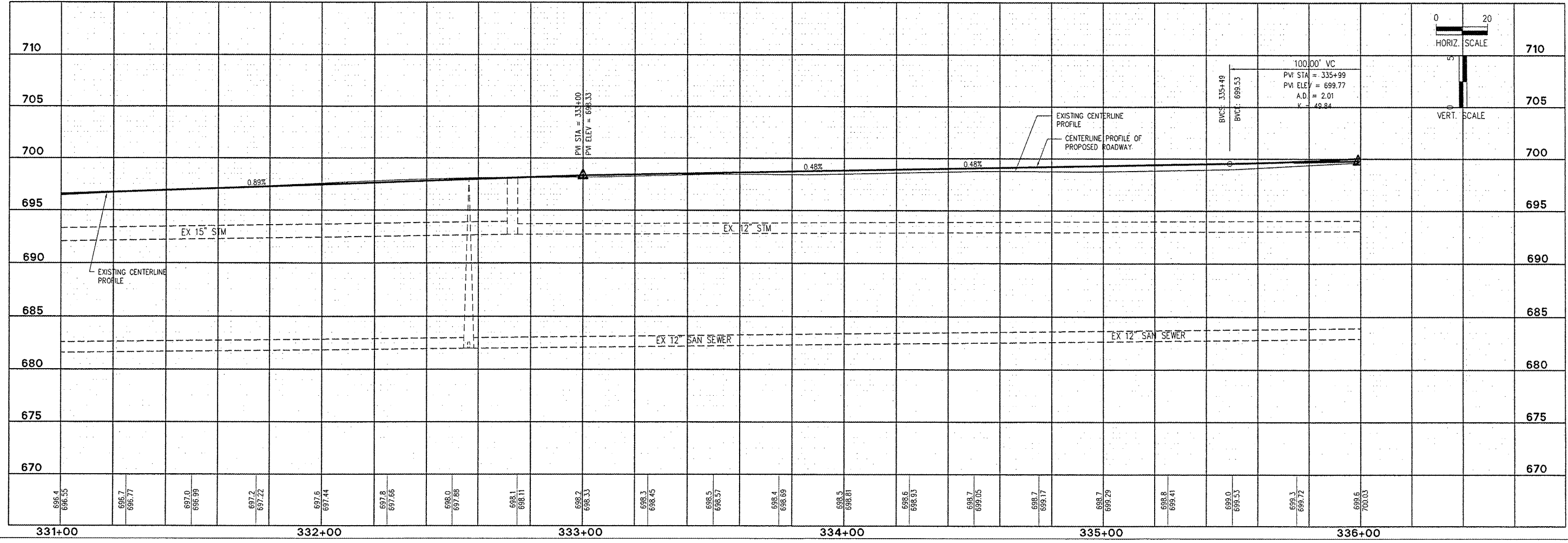
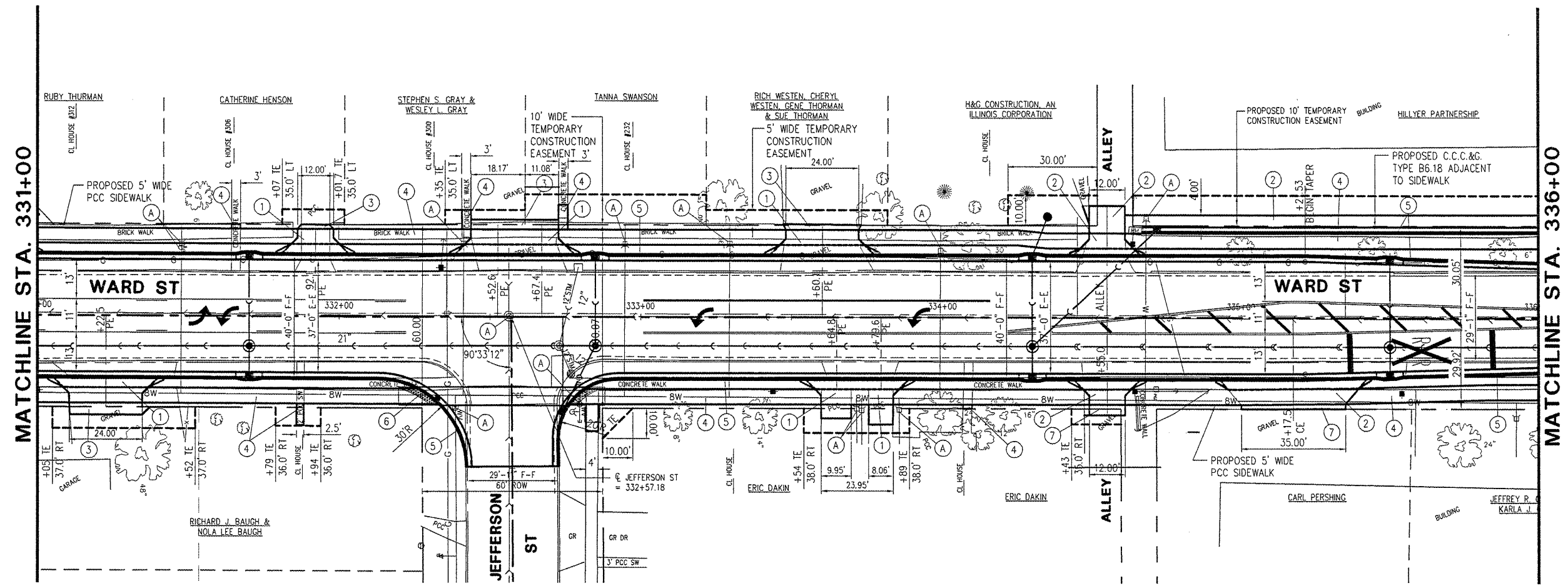


- ITEM LEGEND**
- ① PCC DRIVEWAY PAVEMENT, 6"
 - ② PCC DRIVEWAY PAVEMENT, 7"
 - ③ AGGREGATE SURFACE COURSE, TYPE A, 6"
 - ④ PC CONCRETE SIDEWALK, 4"
 - ⑤ COMB. CONC. CURB & GUTTER, TYPE B6.18
 - ⑥ SIDEWALK RAMP W/ DETECTABLE WARNING
 - ⑦ AGGREGATE SURFACE COURSE, TYPE A, 8"
 - (A) MANHOLE, VALVE BOX, WATER SERVICE BOX OR METER VAULT TO BE ADJUSTED

McClure
 Engineering Associates, Inc.
 Macomb, Illinois 61455
 714 East Jackson Street
 (618) 834-4400 FAX (618) 837-4009
 Design firm License #104-000816 Copyright 2008 by McClure Engineering Associates, Inc.

NO.	REVISIONS	DATE

PLOTTING SCALE: 1" = 20'
 DRAWN BY: JAR
 CHECKED BY: JAR
 DATE: MARCH 2009



NO.	REVISIONS	DATE

WARD STREET IMPROVEMENTS - PHASE 2
PLAN AND PROFILE-STA. 331+00 TO 336+00
 CITY OF MACOMB
 SOUTH WARD ST.
 FILE NAME: \\MACOMB\WARD\ST\PHASE 2\WARD-ST-PH2.DWG FIELD BOOK No: 2257 JOB NUMBER: 01-28-07002
 MACOMB, ILLINOIS