

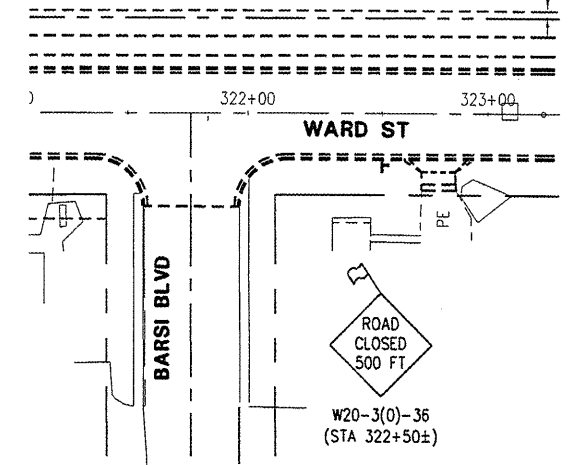
STAGE 1 - MAINLINE STORM SEWER

CONSTRUCTION

1. WORK FROM SOUTH TO NORTH TO MINIMIZE TRAFFIC CONFUSION AND DISRUPTION.
2. CONSTRUCT ALL NEW MAINLINE STORM SEWERS.
3. COORDINATE UTILITY ADJUSTMENTS. (BY OTHERS)

TRAFFIC

- A. CONSTRUCT UNDERGROUND UTILITIES WHILE KEEPING THE ROAD OPEN AS MUCH AS POSSIBLE. COMPLETE CLOSURES WILL BE ALLOWED DURING WORKING HOURS. OUTSIDE OF WORKING HOURS, THIS PORTION OF WARD STREET SHALL BE KEPT OPEN TO LOCAL TRAFFIC.
- B. MINIMIZE CLOSURE OF DRIVEWAYS. DRIVEWAYS SHALL BE CLOSED ONLY DURING CONSTRUCTION OF STORM SEWER THROUGH ADJACENT PAVEMENT. NO DRIVEWAYS SHALL REMAIN CLOSED AFTER WORKING HOURS.



STAGE 2

CONSTRUCTION

1. CONSTRUCT CROSSROAD AND LATERAL STORM SEWER.
2. CONSTRUCT TEMPORARY AGGREGATE ACCESS AT ALL STORM SEWER TRENCHES.
3. REMOVE EXISTING SIDEWALK AND DRIVEWAY PAVEMENT AS INDICATED ALONG THE WEST SIDE OF WARD STREET. PROVIDE TEMPORARY GRAVEL ACCESS AT DRIVEWAYS UNTIL PERMANENT PAVEMENT IS CONSTRUCTED.
4. PERFORM EARTHWORK AND FINAL UTILITY ADJUSTMENTS AS NEEDED ON THE WEST SIDE OF WARD STREET.
5. CONSTRUCT SIDEWALK, CURB AND GUTTER, AND DRIVEWAY APRONS ON THE WEST SIDE OF WARD STREET.
6. REMOVE EXISTING SIDEWALK AND DRIVEWAY PAVEMENT AS INDICATED ALONG THE EAST SIDE OF WARD STREET. PROVIDE TEMPORARY GRAVEL ACCESS AT DRIVEWAYS UNTIL PERMANENT PAVEMENT IS CONSTRUCTED.
7. PERFORM EARTHWORK AND FINAL UTILITY ADJUSTMENTS AS NEEDED ON THE EAST SIDE OF WARD STREET.
8. CONSTRUCT SIDEWALK, CURB AND GUTTER, AND DRIVEWAY APRONS ON THE EAST SIDE OF WARD STREET.
9. REMOVE EXISTING PAVEMENT FROM STA. 328+72 TO STA. 329+70.
10. PERFORM GRADING WORK AND CONSTRUCT PAVEMENT.
11. REMOVE EXISTING PAVEMENT FROM STA. 329+70 TO STA. 332+57.
12. PERFORM GRADING WORK AND CONSTRUCT PAVEMENT.

TRAFFIC

- A. CONSTRUCT IMPROVEMENTS FROM STA. 328+72 TO STA. 332+57 WHILE CLOSING THIS PORTION OF WARD STREET TO THRU TRAFFIC, BUT ALLOWING ACCESS FOR LOCAL TRAFFIC AS MUCH AS POSSIBLE.
- B. DURING STORM CONSTRUCTION, A MINIMUM OF ONE LANE SHALL BE OPEN OUTSIDE OF WORKING HOURS TO ALLOW ACCESS TO LOCAL RESIDENTS.
- C. ACCESS TO PROPERTIES ON THE WEST SIDE OF WARD STREET SHALL BE MAINTAINED FROM THE ALLEY WEST OF AND ADJACENT TO THESE PROPERTIES AT ALL TIMES WHEN THE DRIVEWAYS ARE NOT ACCESSIBLE.
- D. DURING REMOVAL AND CONSTRUCTION OF SIDEWALK AND DRIVEWAY APRONS ON THE WEST SIDE OF WARD STREET (CONSTRUCTION ITEMS 1-3), RESIDENTS ON THE EAST SIDE OF WARD STREET SHALL BE ALLOWED ACCESS TO THEIR DRIVEWAYS AS USUAL. DURING REMOVAL AND CONSTRUCTION OF SIDEWALK AND DRIVEWAY APRONS ON THE EAST SIDE OF WARD STREET (CONSTRUCTION ITEMS 4-6), RESIDENTS ON THE EAST SIDE OF WARD STREET SHALL BE ALLOWED TO PARK ALONG THE WEST SIDE OF THE STREET.
- E. DURING REMOVAL AND CONSTRUCTION OF PAVEMENT FROM STA. 328+72 TO STA. 329+70 (CONSTRUCTION ITEMS 7-8), RESIDENTS ON THE EAST SIDE OF WARD STREET SHALL BE ALLOWED TO PARK ALONG THE STREET BETWEEN STA. 329+70 AND STA. 332+25±. DURING REMOVAL AND CONSTRUCTION OF PAVEMENT FROM STA. 329+70 TO STA. 332+60 (CONSTRUCTION ITEMS 9-10), RESIDENTS ON THE EAST SIDE OF WARD STREET SHALL BE ALLOWED TO PARK ALONG THE STREET BETWEEN STA. 327+75 AND STA. 329+70.

STAGE 2
STA 328+72 TO STA 332+57

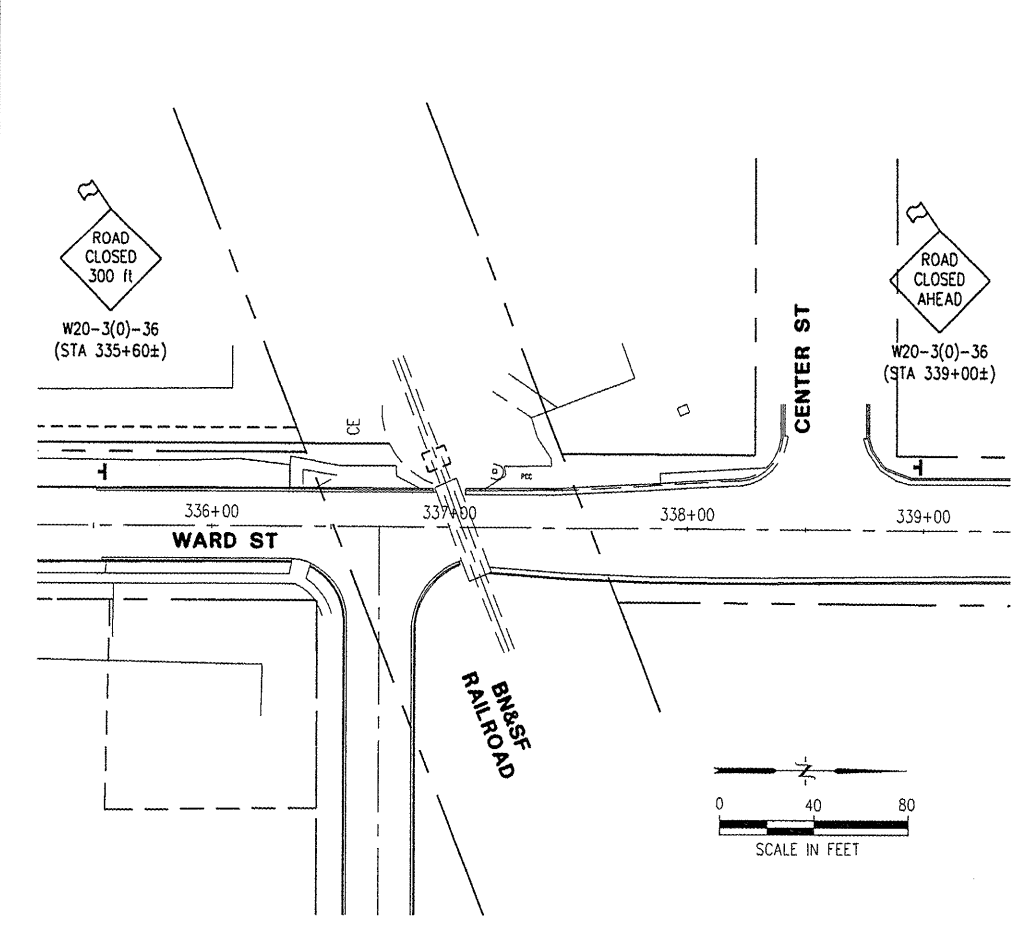
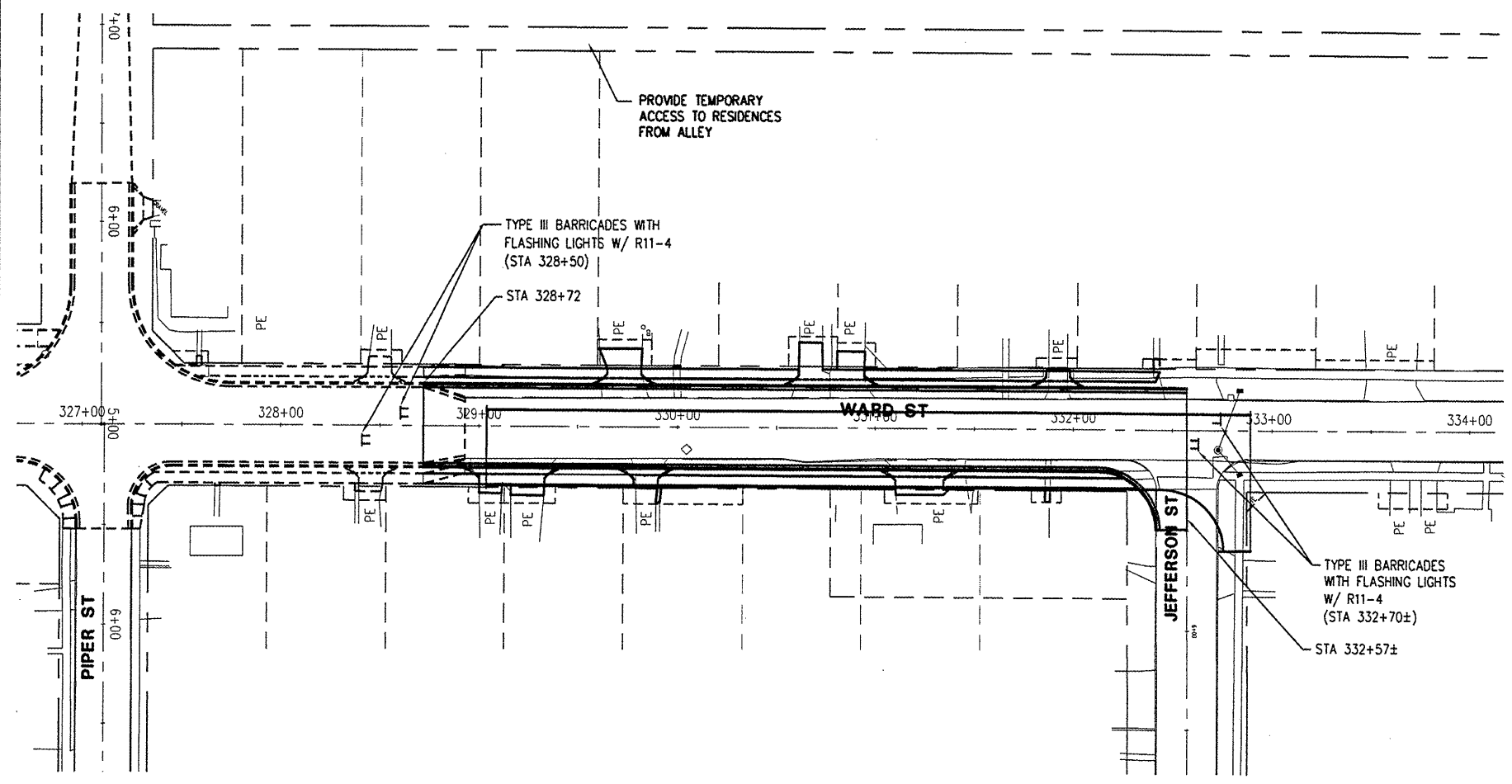
CITY OF MACOMB-WARD STREET	
SEC. 09-00139-01-PV	F.A.U. 6919
PROJ. ARA-5040 (010)	
CONTRACT No. 89527	SHT 17 OF 32

SHEET NO.
17
of **32**

McClure
Engineering Associates, Inc.
61455
Macomb, Illinois
714 East Jackson Street
13091 833-4594
FAX 13091 837-4909
Design Firm License #104-000816 Copyright 2009 by McClure Engineering Associates, Inc.

PLOTTING SCALE: 1" = 40'	DATE: MARCH 2009
DRAWN BY: JAH	CHECKED BY: JAR

NO.	REVISIONS	ITEM	DATE



WARD STREET IMPROVEMENTS - STAGE 1 & 2
CONSTRUCTION STAGING PLAN
CITY OF MACOMB

SOUTH WARD ST.
FILE NAME: \\MACOMB\WARDST\WARD-ST-2007-STAGING
MACOMB, ILLINOIS
FIELD BOOK No. 2237
JOB NUMBER: 07-20-08-098