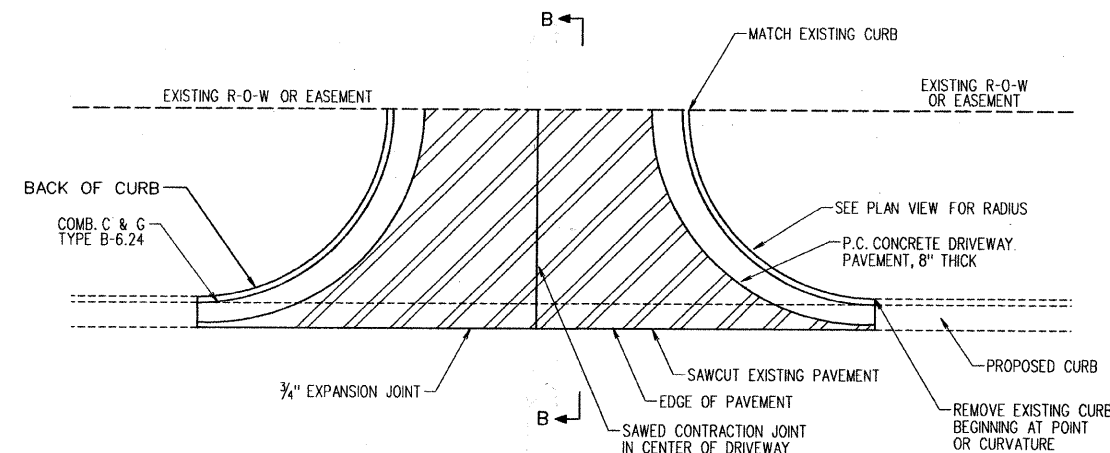
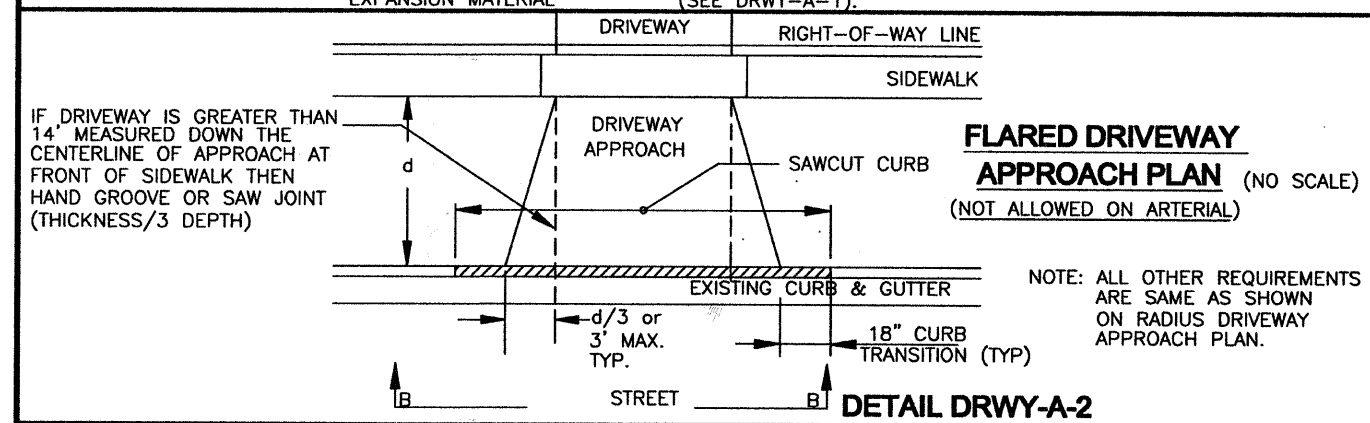
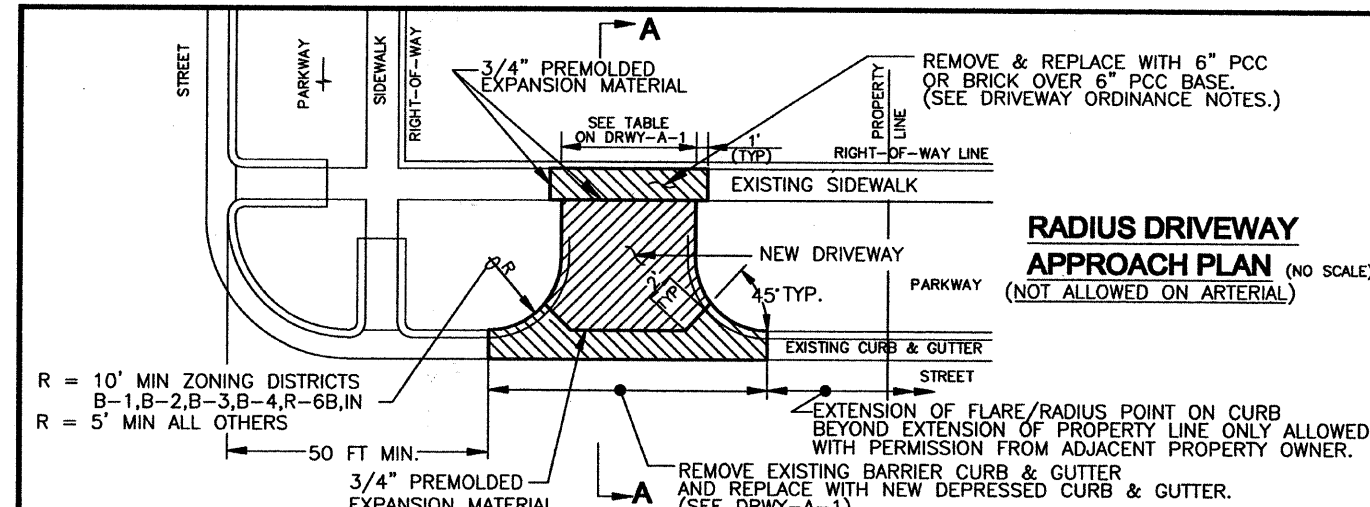
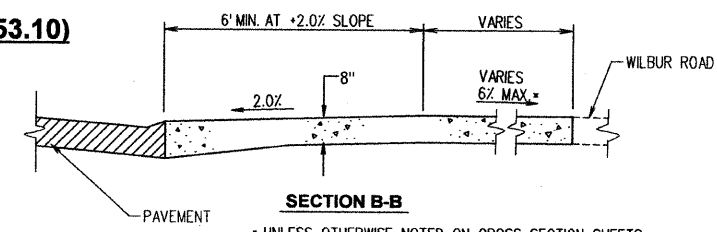


ROUTE NO.	SECTION	COUNTY	TOTAL SHEETS	SHEET NO.
N. LINCOLN AVE.	07-25932-00-BR	CHAMPAIGN	50	3
STA.	TO STA.			
F.H.W.A. REG.	ILLINOIS	PROJECT		

SUMMARY OF QUANTITIES			FAP RTE 806 (LINCOLN AVE.) URBAN TWO WAY ARTERIAL 80% FEDERAL, 20% LOCAL CONSTRUCTION CODE X0 71-2A
CODE #	ITEM NAME	UNIT	TOTAL QUANTITY
20100110	TREE REMOVAL (6 TO 15 UNITS DIAMETER)	UNIT	8.0
20200100	EARTH EXCAVATION	CU YD	1,058.0
20700220	POROUS GRANULAR EMBANKMENT	CU YD	338.0
21101615	TOPSOIL, FURNISH AND PLACE, 4"	SQ YD	542.0
25000200	SEEDING, CLASS 2	ACRE	0.31
25000400	NITROGEN FERTILIZER NUTRIENT	POUND	28.0
25000500	PHOSPHORUS FERTILIZER NUTRIENT	POUND	28.0
25000600	POTASSIUM FERTILIZER NUTRIENT	POUND	28.0
25100115	MULCH METHOD 2	ACRE	0.31
28000250	TEMPORARY EROSION CONTROL SEEDING	POUND	400.0
28000300	TEMPORARY DITCH CHECKS	EACH	5.0
28000400	PERIMETER EROSION BARRIER	FOOT	714.0
28000500	INLET AND PIPE PROTECTION	EACH	1.0
35100100	AGGREGATE BASE COURSE, TYPE A	TON	801.0
40200800	AGGREGATE SURFACE COURSE, TYPE B	TON	171.0
40600100	BITUMINOUS MATERIALS (PRIME COAT)	GALLON	84.0
40600300	AGGREGATE PRIME COAT	TON	5.6
40603085	HOT-MIX ASPHALT BINDER COURSE, IL 19.0, N70	TON	702.0
40600990	TEMPORARY RAMP	SQ YD	111.0
40603315	HOT-MIX ASPHALT SURFACE COURSE, MIX "C" N70	TON	156.0
42001430	BRIDGE APPROACH PAVEMENT CONNECTOR (FLEXIBLE)	SQ YD	87.0
42300400	P.C. CONCRETE DRIVEWAY, PAVEMENT 8 INCH	SQ YD	217.0
44000100	PAVEMENT REMOVAL	SQ YD	1,507.0
44000200	DRIVEWAY PAVEMENT REMOVAL	SQ YD	229.0
44000500	COMBINATION CURB & GUTTER REMOVAL	FOOT	449.0
50100100	REMOVAL OF EXISTING STRUCTURES	EACH	1.0
50105220	PIPE CULVERT REMOVAL	FOOT	56.0
50200100	STRUCTURE EXCAVATION	CU YD	262.0
50300100	FLOOR DRAINS	EACH	14.0
50300225	CONCRETE STRUCTURES	CU YD	199.6
50300255	CONCRETE SUPERSTRUCTURE	CU YD	284.9
50300260	BRIDGE DECK GROOVING	SQ YD	461.0
50300300	PROTECTIVE COAT	SQ YD	563.0
50500105	FURNISHING AND ERECTING STRUCTURAL STEEL	L SUM	1.0
50500505	STUD SHEAR CONNECTORS	EACH	1,288.0
50800205	REINFORCEMENT BARS, EPOXY COATED	POUND	80,650.0
50800515	BAR SPLICERS	EACH	669.0
51201400	FURNISHING STEEL PILES HP10X42	FOOT	1,538.0
51202305	DRIVING PILES	FOOT	1,538.0
51203400	TEST PILE STEEL HP10X42	EACH	4.0
51204650	PILE SHOES	EACH	30.0
51205200	TEMPORARY SHEET PILING	SQ FT	1,400.0
51500100	NAME PLATES	EACH	1.0
55021600	STORM SEWERS, TYPE 2, RCCP, CLASS III, 12"	FOOT	56.0
55100500	STORM SEWER REMOVAL, 12"	FOOT	45.0
59300100	CONTROLLED LOW STRENGTH MATERIAL	CU YD	28.0
60240220	INLETS, TYPE B, TYPE 3 FRAME AND GRATE	EACH	2.0
60605000	COMBINATION CONC. CURB & GUTTER, TYPE B-6.24	FOOT	403.0
63000001	STEEL PLATE BEAM GUARDRAIL, TYPE A, 6 FOOT POSTS	FOOT	125.0
63100045	TRAFFIC BARRIER TERMINAL, TYPE 2	EACH	4.0
63100070	TRAFFIC BARRIER TERMINAL, TYPE 5	EACH	1.0
63100085	TRAFFIC BARRIER TERMINAL, TYPE 6	EACH	3.0
63300725	STEEL PLATE BEAM GUARDRAIL (SHORT RADIUS)	FOOT	25.0
67100100	MOBILIZATION	L SUM	1.0
70100405	TRAFFIC CONTROL AND PROTECTION, STANDARD 701321	EACH	1.0
70100460	TRAFFIC CONTROL AND PROTECTION, STANDARD 701306	L SUM	1.0
70106500	TEMPORARY BRIDGE TRAFFIC SIGNALS	EACH	1.0
70300100	SHORT-TERM PAVEMENT MARKING	FOOT	141.0
70301000	WORK ZONE PAVEMENT MARKING REMOVAL	SQ FT	916.0
70400100	TEMPORARY CONCRETE BARRIER	FOOT	412.5
70400200	RELOCATE TEMPORARY CONCRETE BARRIER	FOOT	262.5
78000100	THERMOPLASTIC PAVEMENT MARKING - LETTERS & SYMBOLS	SQ FT	15.6
78000200	THERMOPLASTIC PAVEMENT MARKING - LINE 4"	FOOT	785.0
78000600	THERMOPLASTIC PAVEMENT MARKING - LINE 12"	FOOT	66.0
78300100	PAVEMENT MARKING REMOVAL	SQ FT	445.6
X5020501	UNDERWATER STRUCTURE EXCAVATION PROTECTION - LOCATION 1	EACH	1.0
X5020502	UNDERWATER STRUCTURE EXCAVATION PROTECTION - LOCATION 2	EACH	1.0
XX004565	GROUTED RIPRAP	SQ YD	862.0
XX004566	CONCRETE CUT-OFF WALL	CU YD	7.2
Z0013798	CONSTRUCTION LAYOUT	L SUM	1.0
Z0030250	IMPACT ATTENUATORS, TEMPORARY (NON-REDIRECTIVE)	EACH	2.0
Z0030350	IMPACT ATTENUATORS, RELOCATE (NON-REDIRECTIVE)	EACH	2.0
TEST LEVEL 3			
TEST LEVEL 3			
TEST LEVEL 3			
*SEE SPECIAL PROVISIONS			
A SPECIALTY ITEMS			



**WILBUR ROAD DETAIL WITH TYPE B-6.24 CURB (STA 7+53.10)**  
NOT TO SCALE



**PRIVATE ENTRANCE DETAIL (STA. 7+21.14 & STA. 7+60.98)**  
NOT TO SCALE

SUMMARY OF QUANTITIES
SECTION: 07-25932-00-BR
CHAMPAIGN COUNTY
Q. STATION 10+00