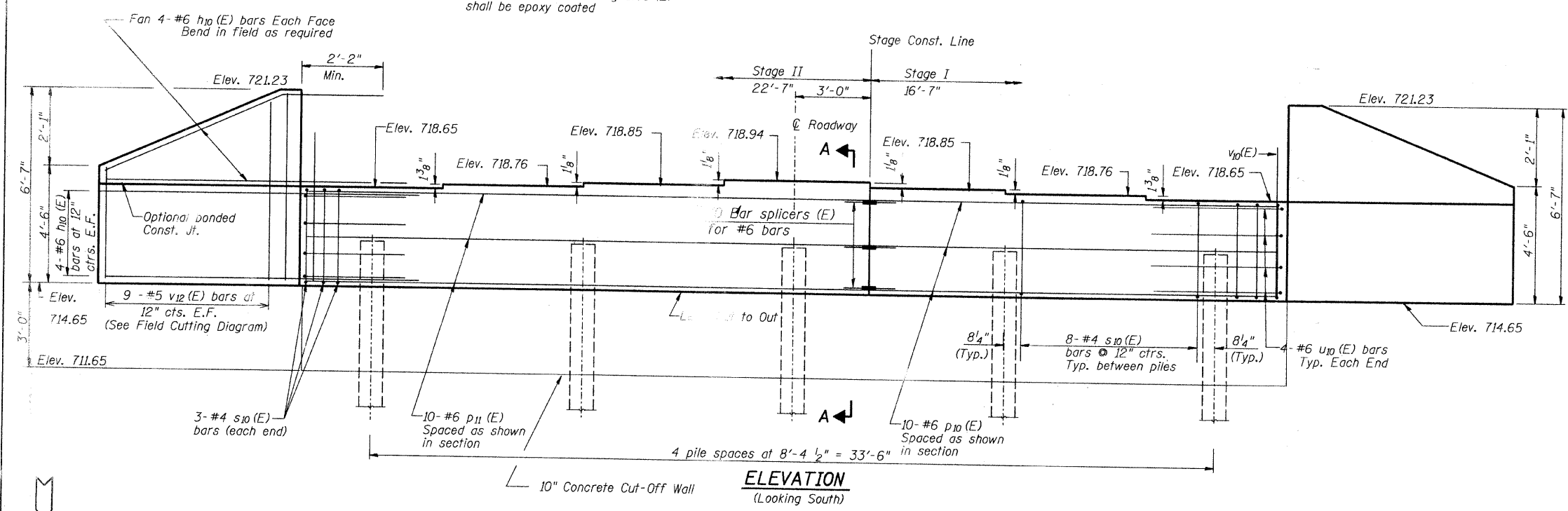
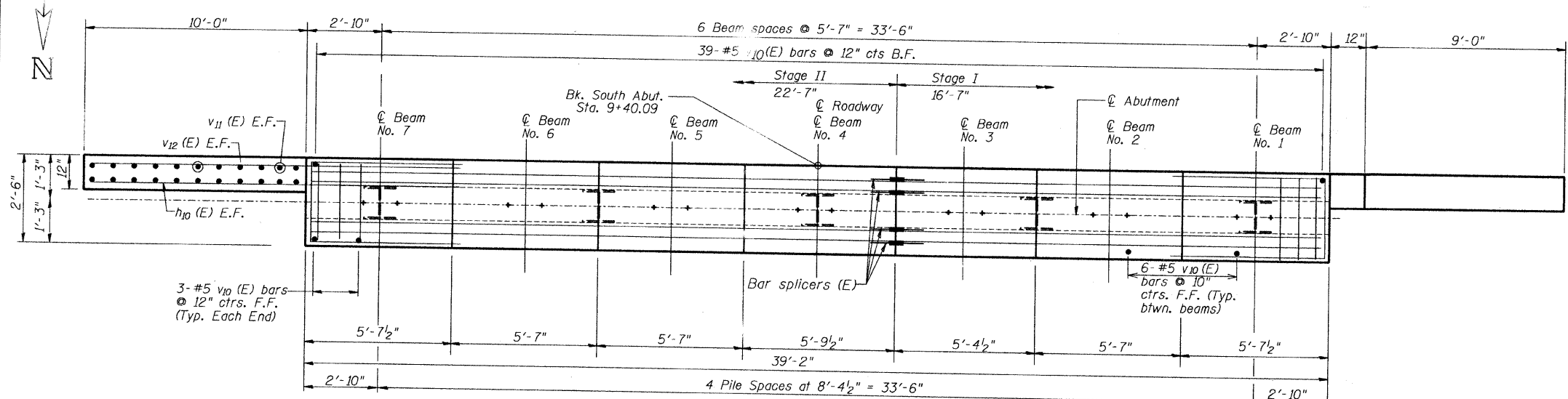


ROUTE NO.	SECTION	COUNTY	TOTAL SHEETS	SHEET NO.
N. LINCOLN AVE.	07-25932-00-BR	CHAMPAIGN	50	25
STA.	TO STA.			
F.H.W.A. REG.	ILLINOIS	PROJECT		

Notes: Pour steps monolithically with cap. Reinforcement bars designated (E) shall be epoxy coated

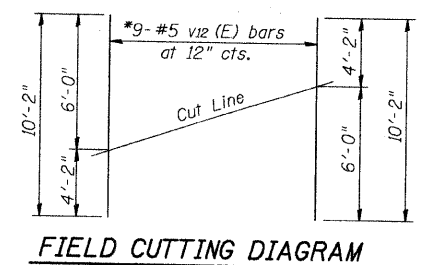
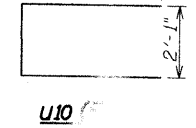
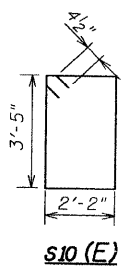
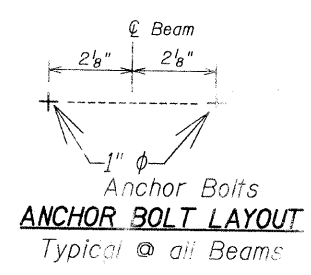


ELEVATION
(Looking South)



PLAN

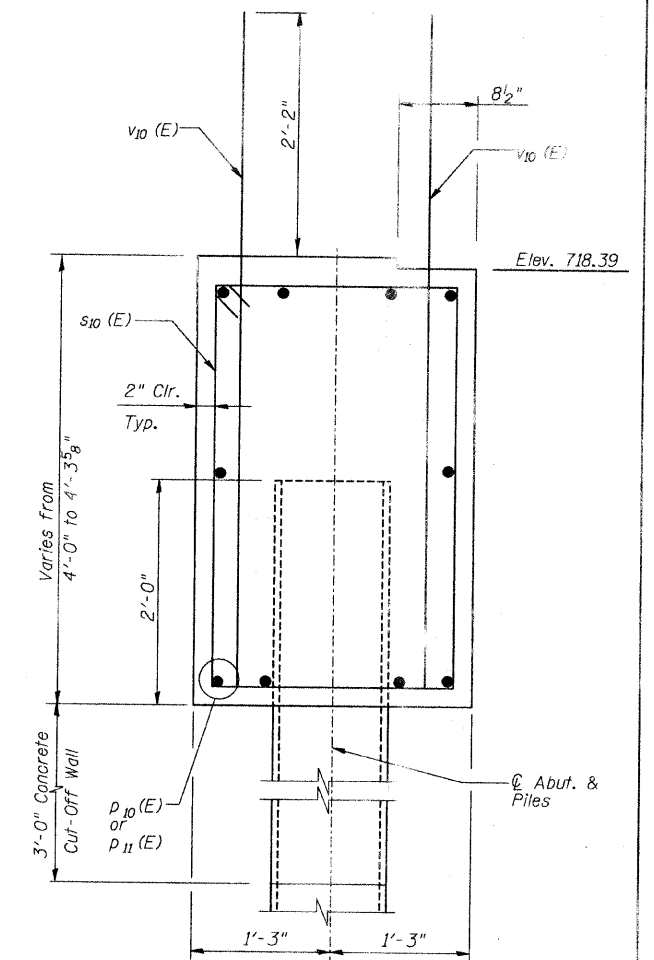
Note: All edges shall have a standard 3/4" chamfer except as noted. One test pile is required at South Abutment.



* Order v12 (E) full length. Cut as shown and use remainder of bars in opposite face.

PILE DATA

Type : Steel HP10X42
Nominal Req'd Bearing : 207 kips
Allowable Resistance Available : 69 kips
Est. Length : 38'
No. Required : 4
Test Pile : 1



SECTION A-A

BILL OF MATERIAL

Bar No.	Size	Length	Shape
h10(E)	32	#6	12'-6"
p10(E)	10	#6	16'-3"
p11(E)	10	#6	22'-3"
s10(E)	38	#4	11'-11"
u10(E)	8	#6	10'-1"
v10(E)	72	#5	6'-0"
v11(E)	8	#5	6'-3"
v12(E)	18	#5	10'-2"
Structure Excavation	Cu. Yd.	86	
Concrete Structures	Cu. Yd.	19.2	
Reinforcement Bars	Pound	2300	
Epoxy Coated			
Furnishing Steel Piles	Foot	152	
HP10X42			
Driving Piles	Foot	152	
Concrete Cut-Off	Cu. Yd.	3.6	
Pile Shoes	Each	5	
Test Pile HP10X42	Each	1	

SOUTH ABUTMENT
SECTION: 07-25932-00-BR
CHAMPAIGN COUNTY
Q. STATION 10+00