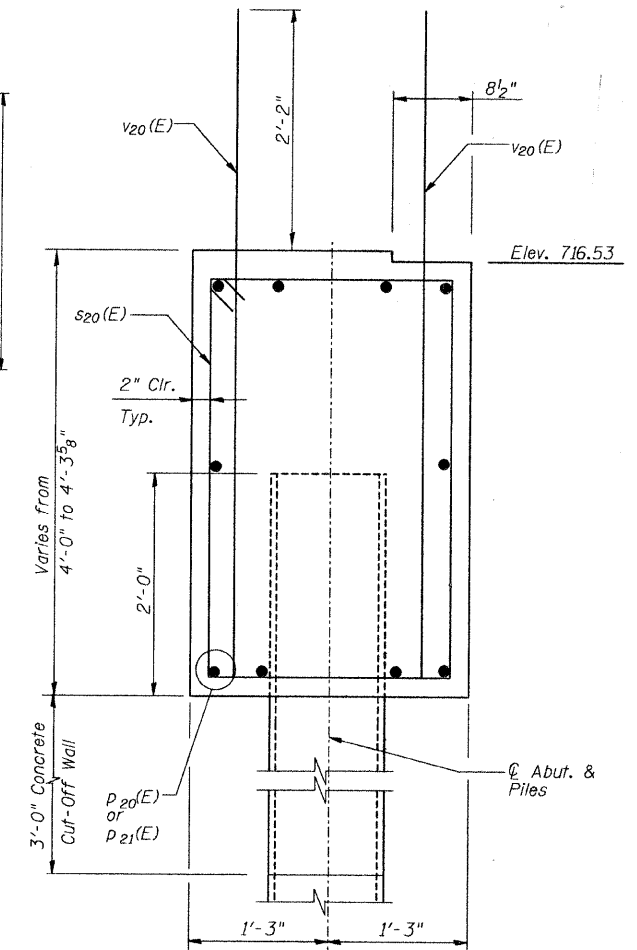
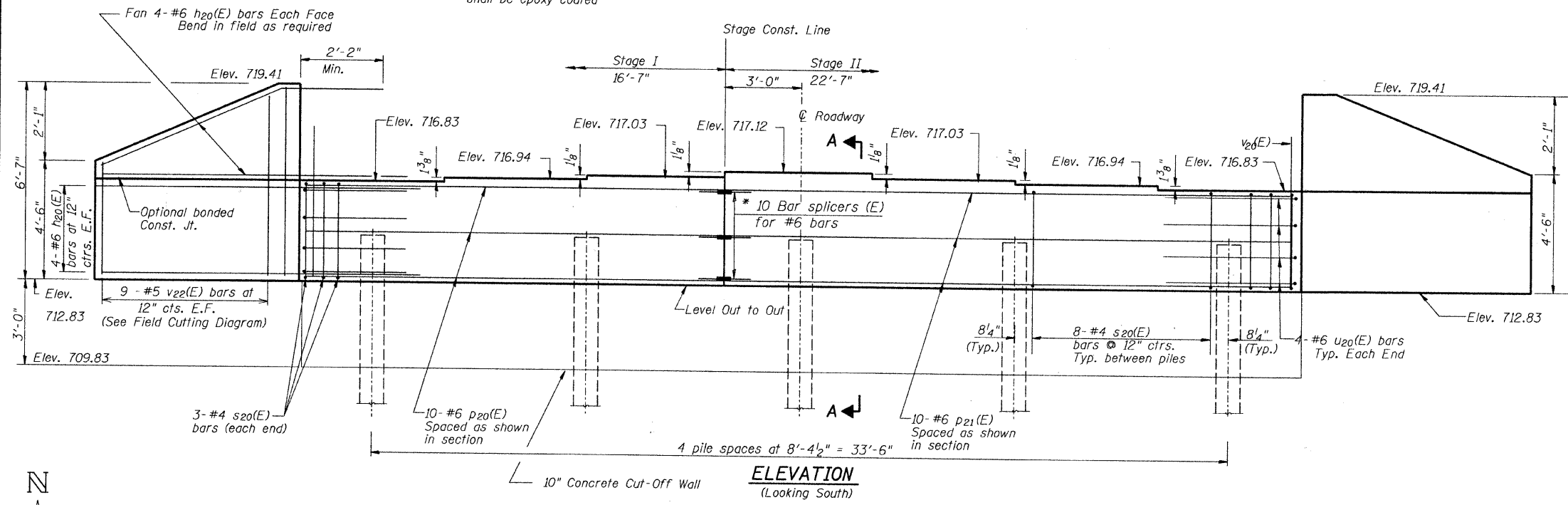


ROUTE NO.	SECTION	COUNTY	TOTAL SHEETS	SHEET NO.
N. LINCOLN AVE.	07-25932-00-BR	CHAMPAIGN	50	26
STA.	TO STA.			
F.H.W.A. REG.	ILLINOIS	PROJECT		

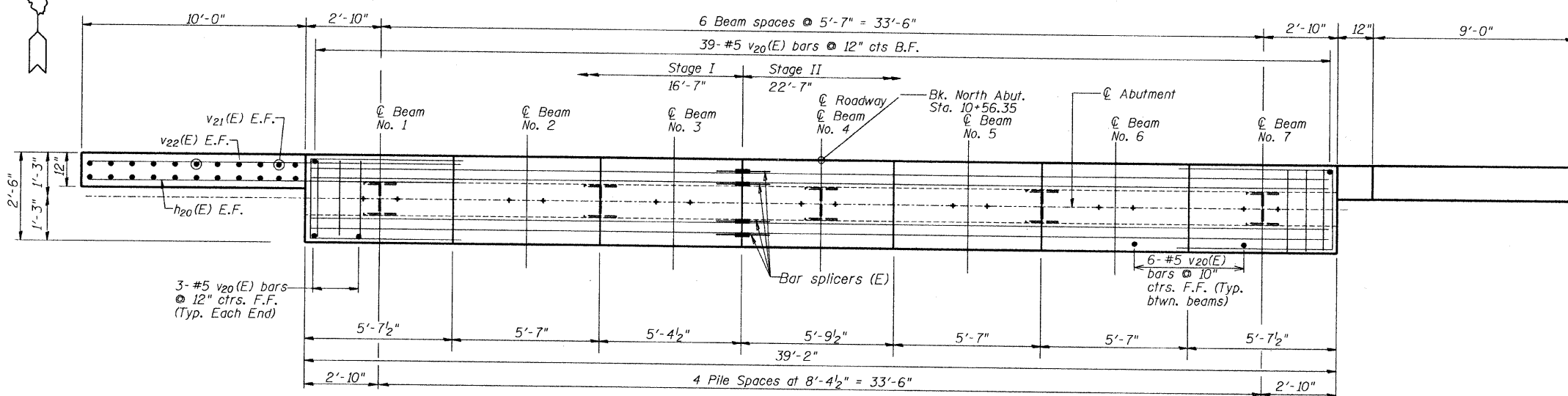
Notes: Pour steps monolithically with cap.
Reinforcement bars designated (E)
shall be epoxy coated



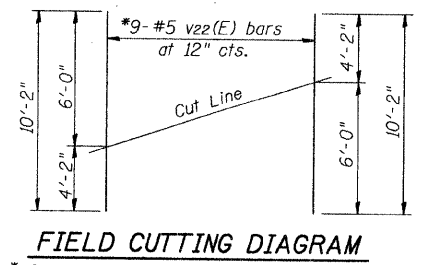
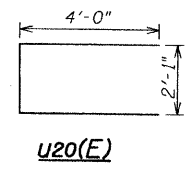
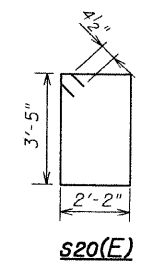
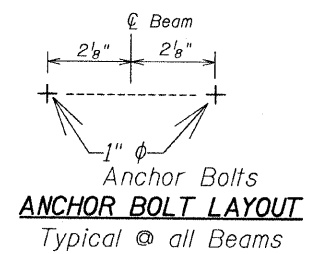
SECTION A-A

BILL OF MATERIAL

Bar	No.	Size	Length	Shape
h ₂₀ (E)	32	#6	12'-6"	—
p ₂₀ (E)	10	#6	16'-3"	—
p ₂₁ (E)	10	#6	22'-3"	—
s ₂₀ (E)	38	#4	11'-11"	□
u ₂₀ (E)	8	#6	10'-1"	⊔
v ₂₀ (E)	72	#5	6'-0"	—
v ₂₁ (E)	8	#5	6'-3"	—
v ₂₂ (E)	18	#5	10'-2"	—
Structure Excavation			Cu. Yd.	86
Concrete Structures			Cu. Yd.	19.2
Reinforcement Bars Epoxy Coated			Pound	2300
Furnishing Steel Piles HP10X42			Foot	180
Driving Piles			Foot	180
Concrete Cut-Off Wall			Cu. Yd.	3.6
Pile Shoes			Each	5
Test Pile HP10X42			Each	1



Note: All edges shall have a standard 3/4" chamfer except as noted. One test pile is required at South Abutment.



* Order v₂₂(E) full length. Cut as shown and use remainder of bars in opposite face.

PILE DATA

Type : Steel HP10X42
Nominal Req'd Bearing : 207 kips
Allowable Resistance Available : 69 kips
Est. Length : 45'
No. Required : 4
Test Pile : 1

NORTH ABUTMENT
SECTION: 07-25932-00-BR
CHAMPAIGN COUNTY
Q STATION 10+00