

SUMMARY OF QUANTITIES

CODE NUMBER	ITEM	UNIT	TOTAL	ROADWAY E000	STRUCTURE NO. 025-3318 X081-2#
* 20100110	TREE REMOVAL (6 TO 15 UNITS DIAMETER)	UNIT	141	141	
* 20100210	TREE REMOVAL (OVER 15 UNITS DIAMETER)	UNIT	40	40	
* 20200100	EARTH EXCAVATION	CU YD	891	891	
* 20300100	CHANNEL EXCAVATION	CU YD	3,565		3,565
* 20700300	POROUS GRANULAR EMBANKMENT, SPECIAL	TON	106		106
* 25001000	SEEDING, CLASS 2 (SPECIAL)	ACRE	0.6	0.6	
28000250	TEMPORARY EROSION CONTROL SEEDING	POUND	290	290	
28000300	TEMPORARY DITCH CHECKS	EACH	12	12	
28000500	INLET AND PIPE PROTECTION	EACH	2	2	
* 28100207	STONE RIPRAP, CLASS A4	TON	550		550
* 40200800	AGGREGATE SURFACE COURSE, TYPE B	TON	474	474	
* 50100100	REMOVAL OF EXISTING STRUCTURES	EACH	1		1
50200100	STRUCTURE EXCAVATION	CU YD	74		74
50200400	ROCK EXCAVATION FOR STRUCTURES	CU YD	46		46
50300225	CONCRETE STRUCTURES	CU YD	49.8		49.8
50300265	SEAL COAT CONCRETE	CU YD	4		4
* 50400305	PRECAST PRESTRESSED CONCRETE DECK BEAMS (17" DEPTH)	SQ FT	757		757
* 50400405	PRECAST PRESTRESSED CONCRETE DECK BEAMS (21" DEPTH)	SQ FT	937		937
* 50400505	PRECAST PRESTRESSED CONCRETE DECK BEAMS (27" DEPTH)	SQ FT	1078		1078
50800205	REINFORCEMENT BARS, EPOXY COATED	POUND	8770		8770
△ 50900205	STEEL RAILING, TYPE S1	FOOT	234		234
51201400	FURNISHING STEEL PILES HP10X42	FOOT	90		90
51202305	DRIVING PILES	FOOT	90		90
51203400	TEST PILE STEEL HP10X42	EACH	2		2
51500100	NAME PLATES	EACH	1		1
* 54200223	PIPE CULVERTS, CLASS D, TYPE 1 18"	FOOT	29	29	
* 54205473	PIPE CULVERTS, CLASS D, TYPE 1 EQUIVALENT ROUND-SIZE 18"	FOOT	24	24	
59100100	GEOCOMPOSITE WALL DRAIN	SQ YD	30		30
* 60109580	PIPE UNDERDRAINS FOR STRUCTURES 4"	FOOT	116		116
63500105	DELINEATORS	EACH	10	10	
67100100	MOBILIZATION	L SUM	1	1	
△* 78201000	TERMINAL MARKER - DIRECT APPLIED	EACH	4	4	
* 60240260	INLETS, TYPE B, TYPE 60 GRATE	EACH	1	1	
* X0323116	REFLECTOR MARKERS, TYPE B	EACH	6	6	
* X5020501	UNDERWATER STRUCTURE EXCAVATION PROTECTION - LOCATION 1	EACH	1		1
* X5020502	UNDERWATER STRUCTURE EXCAVATION PROTECTION - LOCATION 2	EACH	1		1

* SPECIAL PROVISION △ SPECIALTY ITEMS

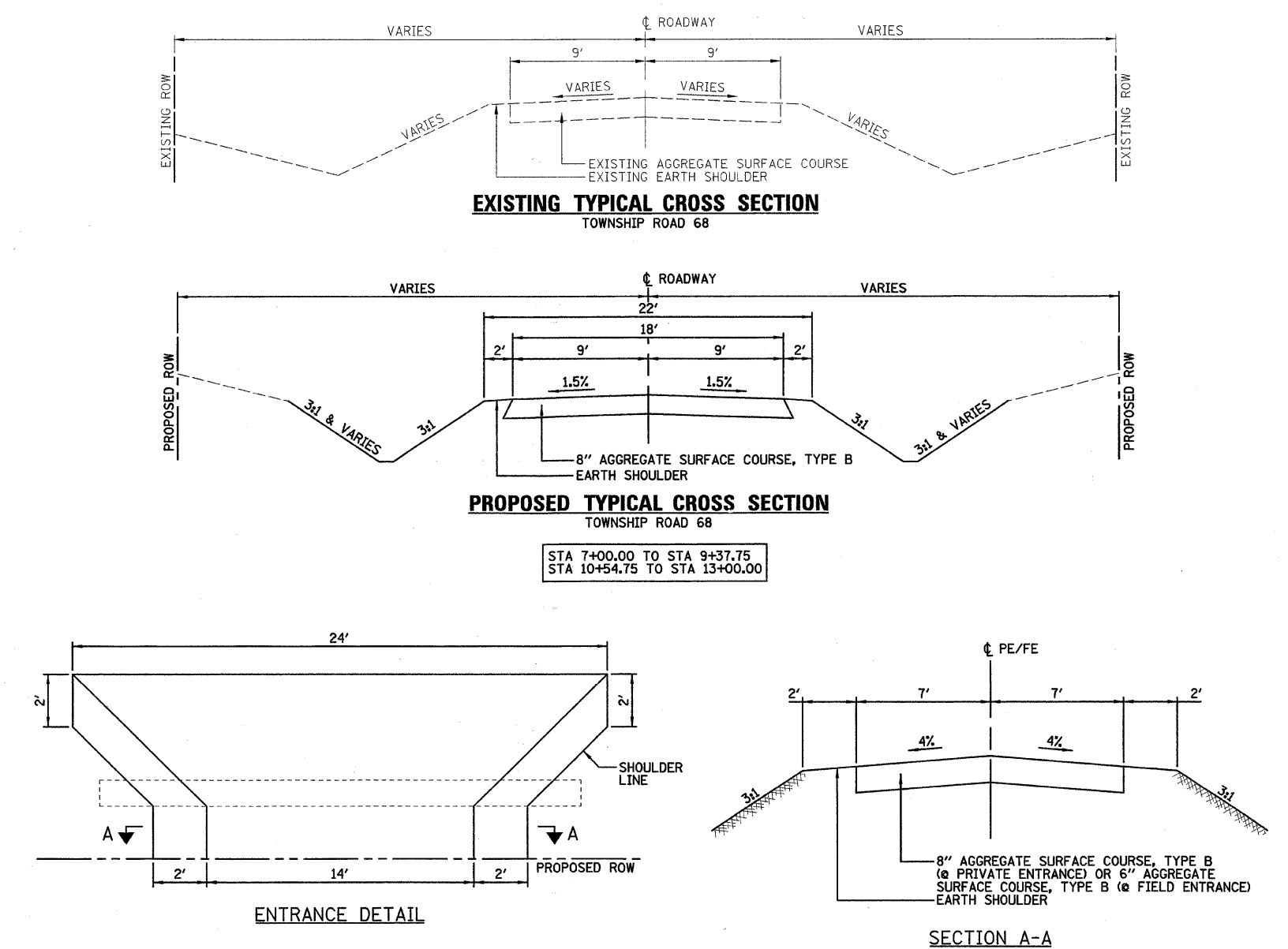
DESIGNED - JML	REVISED -
DRAWN - JJO	REVISED -
CHECKED - MSW	REVISED -
DATE - 06/22/09	REVISED -

EFFINGHAM COUNTY DEPARTMENT OF HIGHWAYS

**SUMMARY OF QUANTITIES, TYPICAL CROSS SECTIONS,
GENERAL NOTES AND MISCELLANEOUS DETAILS**

**T.R. 68 OVER FULFER CREEK
SECTION 05-07106-00-BR
EFFINGHAM, COUNTY**

T.R.	SECTION	COUNTY	TOTAL SHEETS	SHEET NO.
68	05-07106-00-BR	EFFINGHAM	25	2
CONTRACT NO. 93573				



GENERAL NOTES

- ALL ELEVATIONS REFER TO U.S.G.S. MEAN SEA LEVEL DATUM.
- SEEDING WILL NOT BE PERMITTED AT ANY TIME WHEN THE GROUND IS FROZEN, WET, OR IN AN UNTILLABLE CONDITION. LOCATIONS TO BE SEEDDED SHALL BE DETERMINED BY THE ENGINEER.
- THE CONTRACTOR SHALL BE RESPONSIBLE FOR PROTECTING UTILITY PROPERTY FROM CONSTRUCTION OPERATIONS AS OUTLINED IN ARTICLE 107.31 OF THE STANDARD SPECIFICATIONS. THE J.U.L.I.E. NUMBER IS 1-800-892-0123. A MINIMUM OF FORTY-EIGHT HOURS ADVANCE NOTICE IS REQUIRED.
- THE CONTRACTOR SHALL VERIFY THE LOCATION AND ELEVATION OF ALL UTILITIES PRIOR TO ANY STRUCTURE WORK OR ROADWAY CONSTRUCTION ACTIVITIES.
- ABANDONED UNDERGROUND UTILITIES THAT CONFLICT WITH CONSTRUCTION SHALL BE DISPOSED OF OUTSIDE THE LIMITS OF THE RIGHT OF WAY ACCORDING TO ARTICLE 202.03 AND AS DIRECTED BY THE ENGINEER. THIS WORK WILL NOT BE PAID FOR SEPARATELY BUT SHALL BE INCLUDED IN THE COST OF EARTH EXCAVATION.
- SEE SHEET 3 FOR TRANSIT LINE AND CONTROL POINT TIES.
- ANY ITEMS TO BE REMOVED WHICH ARE ATTACHED TO THE EXISTING STRUCTURE SHALL BE INCLUDED WITH THE UNIT PRICE BID FOR "REMOVAL OF EXISTING STRUCTURES".
- THE FINISHED EARTHWORK SHALL HAVE A VEGETATION SUSTAINING SOIL COVERING THE TOP FOUR INCHES IN AREAS TO BE SEEDDED OR SODDED. THE VEGETATION SUSTAINING SOIL REQUIRED WILL NOT BE PAID FOR SEPARATELY BUT SHALL BE INCLUDED IN THE COST OF "EARTH EXCAVATION".
- ANY REFERENCE TO A STANDARD IN THESE PLANS SHALL BE INTERPRETED TO MEAN THE EDITION AS INDICATED BY THE SUBNUMBER SHOWN IN THE LIST OF STANDARDS INCLUDED IN THESE PLANS.
- ONLY THOSE TREES DESIGNATED BY THE ENGINEER OR LISTED IN THE TREE REMOVAL SCHEDULE SHALL BE REMOVED. THE CONTRACTOR SHALL PROTECT ALL REMAINING TREES FROM DAMAGE DUE TO THEIR OPERATIONS.
- FOR STABILIZATION, ALL TYPE III BARRICADES SHALL REQUIRE A MINIMUM OF FOUR SAND BAGS PER BARRICADE.
- IN ORDER TO AVOID IMPACTS TO THE STATE THREATENED TIMBER RATTLESNAKE (CROTALIS HORRIDUS), THE RESIDENT ENGINEER, CONTRACTOR, SUPERVISORS ON THE JOB, AND EACH INDIVIDUAL WORKER SHOULD BE INFORMED AND EDUCATED THAT ANY SNAKE ENCOUNTERED MUST NOT BE KILLED OR HARMED. THE TIMBER RATTLESNAKE IS LEGALLY PROTECTED UNDER THE ILLINOIS ENDANGERED SPECIES PROTECTION ACT, AND A VIOLATION IS A CLASS A MISDEMEANOR. (CLASS A MISDEMEANORS CARRY A FINE OF UP TO \$1,000 AND UP TO 364 DAYS IN JAIL.