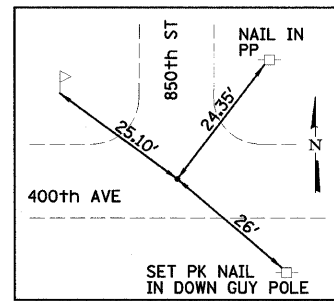
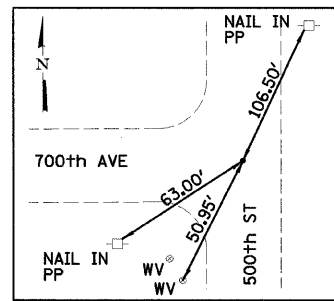


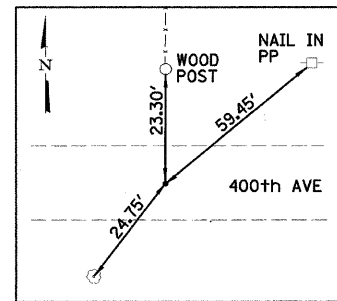
IR 12" DEEP AT SE COR SEC 9



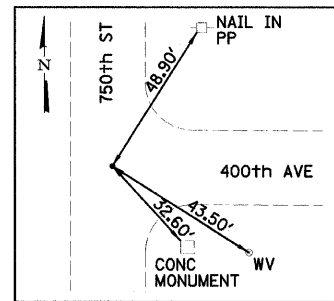
EX IR S 1/4 COR SEC 9



EX IR NW COR SEC 8



EX IR SE COR SEC 8 IN-LINE WITH FENCE NORTH



EX IR S 1/4 COR SEC 8

TREE REMOVAL (6 TO 15 UNITS DIAMETER)

LOCATION	UNIT
STA 9+55 LT	8
STA 9+60 LT	15
STA 9+65 RT	12
STA 9+71 LT	15
STA 9+75 RT	12
STA 9+79 RT	7
STA 9+79 RT	12
STA 10+38 RT	14
STA 10+39 LT	12
STA 10+44 LT	8
STA 10+47 RT	14
STA 10+64 LT	12
TOTAL	141

TREE REMOVAL (OVER 15 UNITS DIAMETER)

LOCATION	UNIT
STA 9+72 RT	20
STA 10+40 RT	20
TOTAL	40

SEEDING TABLE

LOCATION	SEEDING, CLASS 2 (SPECIAL) ACRE	TEMPORARY EROSION CONTROL SEEDING POUND
STA 7+00 TO STA 9+37.75 LT	0.13	65
STA 10+54.74 TO STA 13+00 LT	0.18	90
STA 7+00 TO STA 9+37.75 RT	0.12	60
STA 10+54.75 TO STA 13+00 RT	0.15	75
TOTAL	0.58	290

EARTHWORK

LOCATION	EARTH EXCAVATION CU YD	EXCAVATION ADJUSTED FOR SHRINKAGE* CU YD	EMBANKMENT CU YD	EARTH BALANCE WASTE (+) OR SHORTAGE (-) CU YD
STA 7+00 TO STA 9+37.75	369	277	47	+230
STA 10+54.75 TO STA 13+00	522	392	268	+124
TOTAL	891	669	315	+354

*SHRINKAGE FACTOR = 25%

TEMPORARY DITCH CHECKS

LOCATION	EACH
STA 7+50 RT	1
STA 8+00 LT & RT	2
STA 8+50 LT	1
STA 9+00 LT & RT	2
STA 10+66 LT & RT	2
STA 11+54 LT	1
STA 11+72 RT	1
STA 12+50 LT	1
STA 12+75 RT	1
TOTAL	12

INLET AND PIPE PROTECTION

LOCATION	EACH
STA 7+50 LT	1
STA 8+55 RT	1
TOTAL	2

AGGREGATE SURFACE COURSE, TYPE B

LOCATION	TON
STA 7+00 TO STA 9+37.75	219
STA 10+54.75 TO STA 13+00	225
STA 7+81.6 LT (PE)	18
STA 8+70.00 RT (FE)	12
TOTAL	474

PIPE CULVERTS, CLASS D, TYPE 1, 18"

LOCATION	FOOT
STA 7+81.6 LT (PE)	29
TOTAL	29

PIPE CULVERTS, CLASS D, TYPE 1 EQUIVALENT ROUND-SIZE 18"

LOCATION	EACH
STA 8+70.00 RT (FE)	24
TOTAL	24

DELINEATORS

LOCATION	EACH
STA 10+80 LT & RT	2
STA 11+20 LT & RT	2
STA 11+60 LT & RT	2
STA 12+00 LT & RT	2
STA 12+85 LT & RT	2
TOTAL	10

TERMINAL MARKER - DIRECT APPLIED

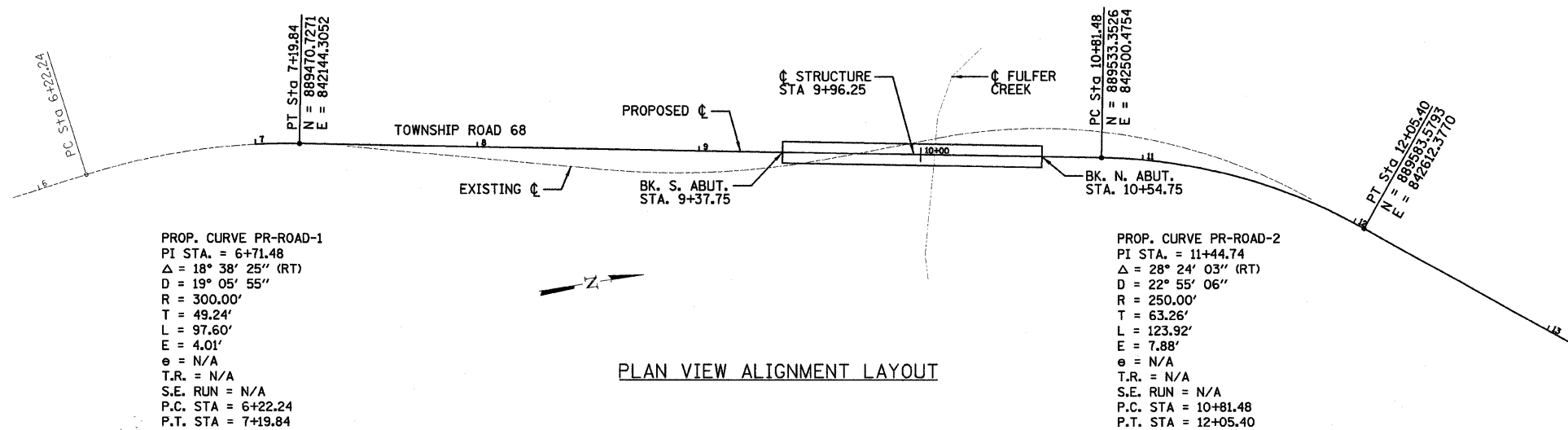
LOCATION	EACH
STA 9+35.75 LT & RT	2
STA 10+56.75 LT & RT	2
TOTAL	4

REFLECTOR MARKERS, TYPE B

LOCATION	EACH
STA 9+46.25 LT & RT	2
STA 9+96.25 LT & RT	2
STA 10+46.25 LT & RT	2
TOTAL	6

INLETS TYPE B WITH TYPE 60 GRATE

LOCATION	EACH
STA 7+97 LT	1
TOTAL	1



PLAN VIEW ALIGNMENT LAYOUT

DESIGNED - JML	REVISED -
DRAWN - JJO	REVISED -
CHECKED - MSW	REVISED -
DATE - 06/22/09	REVISED -

EFFINGHAM COUNTY DEPARTMENT OF HIGHWAYS

SCHEDULE OF QUANTITIES, TRANSIT LINE TIES AND CONTROL POINT TIES

SCALE: SHEET NO. 3 OF 25 SHEETS STA. TO STA.

T.R. 68 OVER FULFER CREEK SECTION 05-07106-00-BR EFFINGHAM, COUNTY

T.R.	SECTION	COUNTY	TOTAL SHEETS	SHEET NO.
68	05-07106-00-BR	EFFINGHAM	25	3
CONTRACT NO. 95593				
FED. ROAD DIST. NO. 7 ILLINOIS FED. AID PROJECT				