

STATE OF ILLINOIS
DEPARTMENT OF TRANSPORTATION

PLANS FOR
PROPOSED LOCAL AGENCY IMPROVEMENT
ARU/STU PROJECT

FAU ROUTES 8655 & 8659 SECTION 08-00072-00-RS
PROJECT M-ARA-5048(020)
CITY OF MT. CARMEL
WABASH COUNTY

SECTION	COUNTY	TOTAL SHEETS	SHEET NO.
08-00072-00-RS	WABASH	8	1
FAU ROUTES 8655 & 8659			
PROJECT M-ARA-5048(020) CONTRACT 95597			

INDEX OF SHEETS

SHEET NO.	DESCRIPTION
1	COVER SHEET
2	SCHEDULES AND DETAILS
3	PLAN SHEET (WALNUT TO MARKET)
4	PLAN SHEET (THIRD TO FIFTH)
5	PLAN SHEET (FIFTH TO SEVENTH)
6	PLAN SHEET (SEVENTH TO NINTH)
7	THERMOPLASTIC & DETECTION LOOP LOCATIONS
8	TRAFFIC CONTROL PLAN
000001-05	STANDARD SYMBOLS, ABBREVIATIONS AND PATTERNS
442201-03	CLASS C AND D PATCHES
701311-03	LANE CLOSURE 2L, 2W MOVING OPERATIONS-DAY ONLY
701501-05	URBAN LANE CLOSURE, 2L, 2W, UNDIVIDED
701901-01	TRAFFIC CONTROL DEVICES
780001-02	TYPICAL PAVEMENT MARKINGS
886001-01	DETECTOR LOOP INSTALLATIONS
886006-01	TYPICAL LAYOUTS FOR DETECTION LOOPS

EXISTING UTILITY INFORMATION

UTILITY LOCATES	CALL "JULIE"	800-892-0123
ELECTRIC AND GAS	MT. CARMEL PUBLIC UTILITY	618-262-5151
WATER AND SEWER	CITY OF MT. CARMEL	618-262-8486
TELEPHONE	VERIZON	800-483-1000
CABLE TV	CHARTER COMMUNICATIONS	888-438-2427

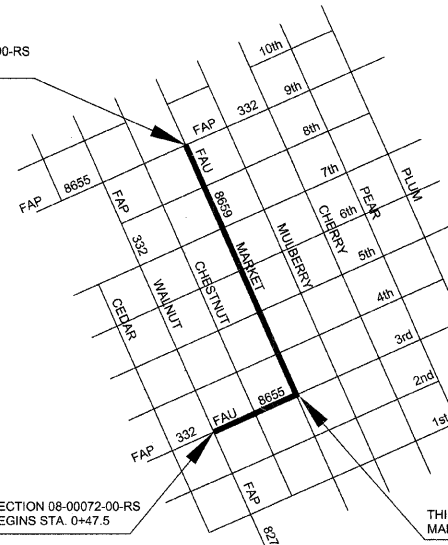
DESIGN INFORMATION

AADT = 5000 VPD
FUNCTIONAL CLASS: URBAN ARTERIAL
DESIGN SPEED: 30 MPH

JOB NO. C-97-137-09

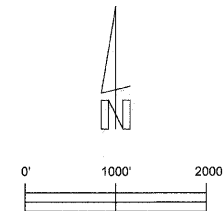
CONTRACT NO. 95597

SECTION 08-00072-00-RS
ENDS STA. 39+18.5



SECTION 08-00072-00-RS
BEGINS STA. 0+47.5

THIRD STREET STA. 9+90.0 (BEHIND) =
MARKET STREET STA. 9+90.0 (AHEAD)



David G. Davis
ILLINOIS PROFESSIONAL ENGINEER
REGISTRATION NO. 062-034444
LICENSE EXPIRE 11-31-2009
DATE 7/15/2009



GROSS LENGTH	3918.50	FEET	0.7421	MILES
OMISSIONS	0.00	FEET	0.0000	MILES
THIRD STREET	990.00	FEET	0.1875	MILES
MARKET STREET	2928.50	FEET	0.5546	MILES
TOTAL NET LENGTH	3918.50	FEET	0.74.21	MILES

STATE OF ILLINOIS
DEPARTMENT OF TRANSPORTATION

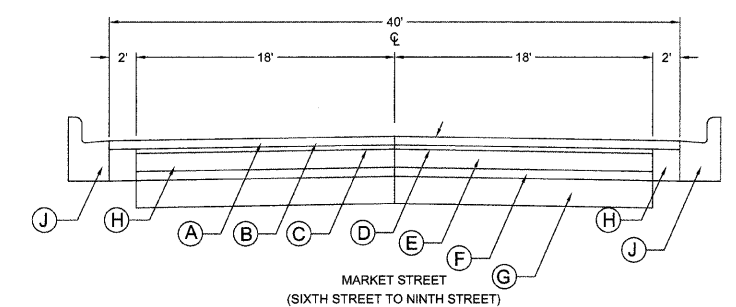
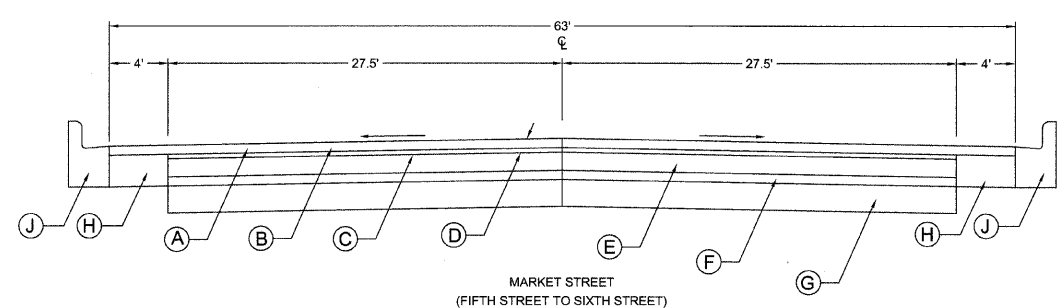
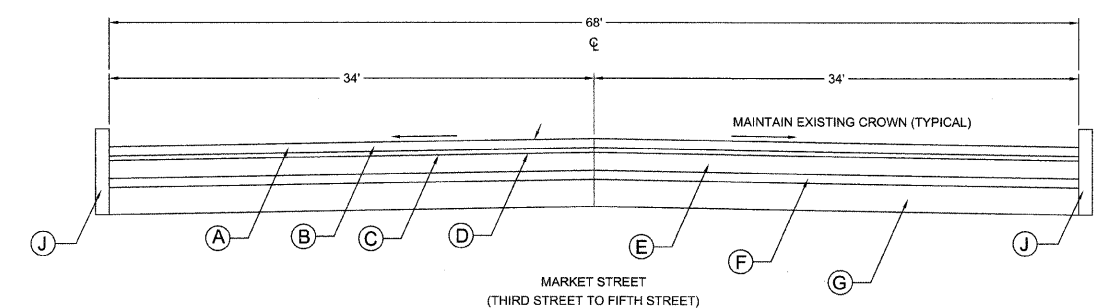
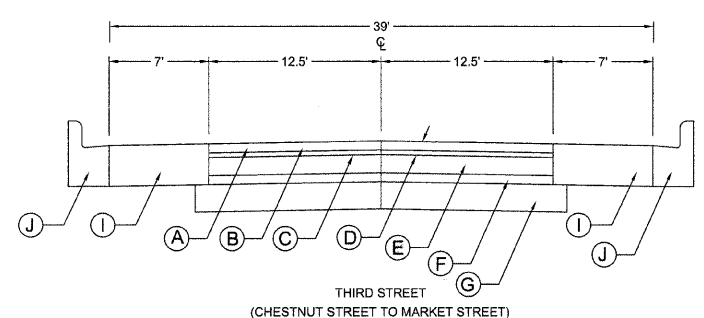
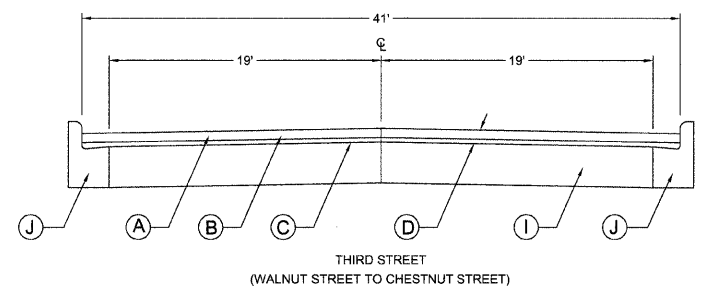
APPROVED *Thomas W. Meeker*
7/15/09
City of Mt. Carmel, Mayor

PASSED 7-23-09
Matthew Kautsky
District 7 Engineer of Local Roads & Streets

Releasing for Bid
Based on Limited
Review

7-23-09
Raymond L. Dwyer
Deputy Director of Highways, Region 4 Engineer

SECTION	COUNTY	TOTAL SHEETS	SHEET NO.
08-00072-00-RS	WABASH	8	2
FAU ROUTES 8655 & 8659			
PROJECT M-ARA-5048(020) CONTRACT 95597			



LEGEND

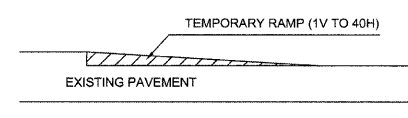
- (A) HOT-MIX ASPHALT SURFACE COURSE, TYPE "C", N70 (2")
- (B) HOT-MIX ASPHALT SURFACE REMOVAL (2" NOMINAL THICKNESS)
- (C) BITUMINOUS MATERIALS (PRIME COAT)
- (D) EXISTING ASPHALT PAVING (2" - 3" BEFORE MILLING)
- (E) EXISTING BRICK PAVEMENT (4")
- (F) EXISTING SAND CUSHION (2")
- (G) EXISTING CONCRETE BASE (6")
- (H) EXISTING PCC WIDENING
- (I) EXISTING PCC PAVEMENT (9")
- (J) EXISTING CONCRETE CURB OR CONCRETE CURB & GUTTER

GENERAL NOTES

THIS SECTION SHALL BE CONSTRUCTED IN ACCORDANCE WITH THE PLANS, "STANDARD SPECIFICATIONS FOR ROAD AND BRIDGE CONSTRUCTION" ADOPTED JANUARY 1, 2007, THE LATEST EDITION OF THE "ILLINOIS MANUAL FOR TRAFFIC CONTROL DEVICES FOR STREETS AND HIGHWAYS", THE CURRENT EDITION OF THE "SUPPLEMENTAL SPECIFICATIONS AND RECURRING SPECIAL PROVISIONS" AS WELL AS THE SPECIAL PROVISIONS INCLUDED IN THE PROPOSAL.

THE WORK INCLUDED IN THIS SECTION SHALL CONSIST OF ROTOMILLING AND RESURFACING THE EXISTING ASPHALT SURFACE, PLACEMENT OF THERMOPLASTIC PAVEMENT MARKINGS, PATCHING AS NECESSARY, AND ANY OTHER WORK NEEDED TO COMPLETE THE PROJECT.

TEMPORARY RAMP DETAILS



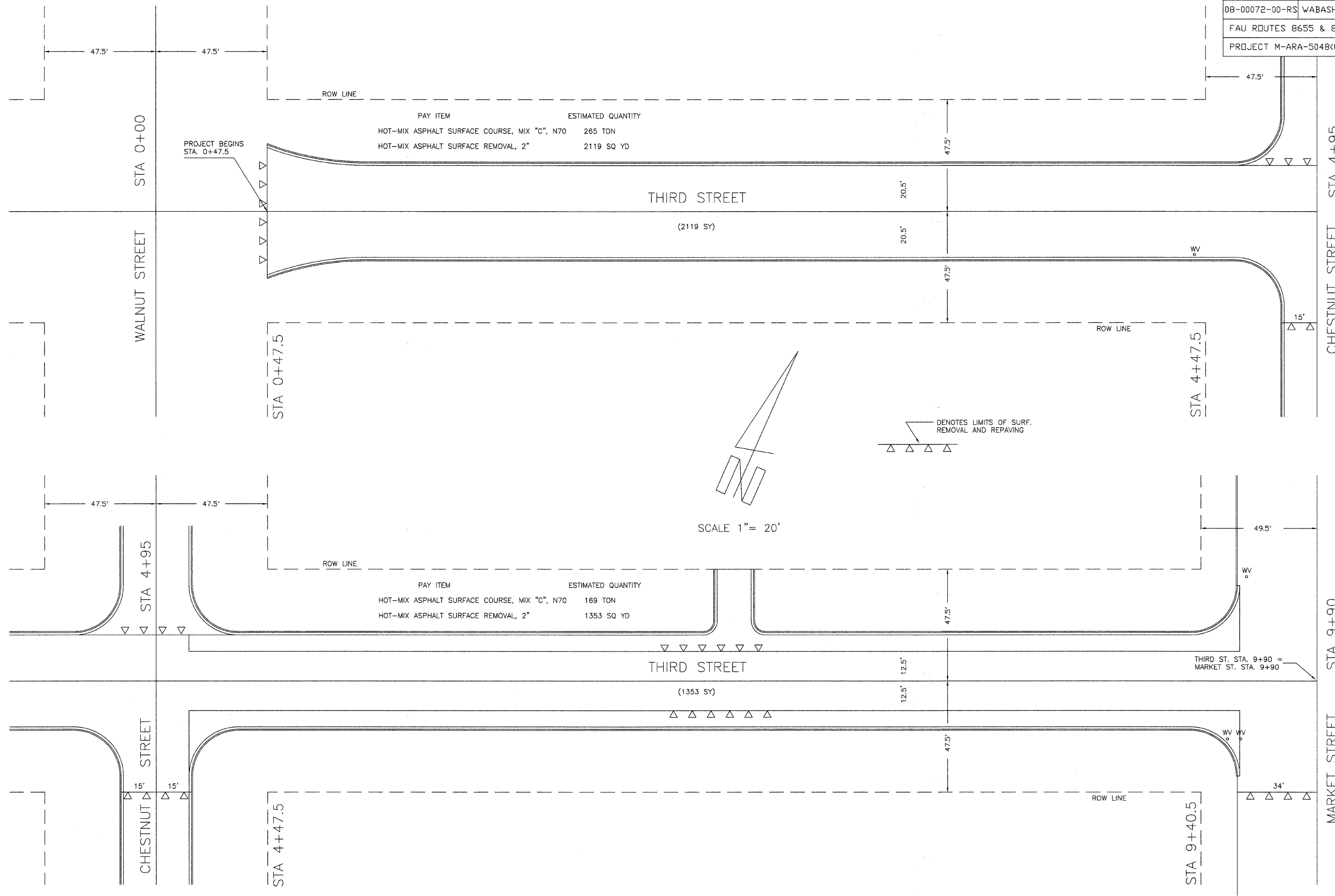
NOTE: TEMPORARY RAMPS TO BE CONSTRUCTED AT EACH END OF PROJECT, AT EACH INTERSECTING STREET, AND AT END OF PROGRESS FOR EACH DAY.

SUMMARY OF QUANTITIES

QUANTITY	UNIT	ITEM	CODE NO.
1110.0	GALLON	BITUMINOUS MATERIALS (PRIME COAT)	40600100
55.0	TON	AGGREGATE (PRIME COAT)	40600300
12.0	TON	MIXTURE FOR CRACKS, JOINTS, AND FLANGEWAYS	40600400
2780.0	TON	HOT-MIX ASPHALT SURFACE COURSE, MIXTURE "C", N70	40603315
400.0	SQ YD	TEMPORARY RAMP	40600990
22240.0	SQ YD	HOT-MIX ASPHALT SURFACE REMOVAL, 2"	44000157
8.0	SQ YD	CLASS D PATCHES, TYPE I	44201974
10.0	SQ YD	CLASS D PATCHES, TYPE II	44201976
1.0	L SUM	MOBILIZATION	67100100
1.0	L SUM	TRAFFIC CONTROL AND PROTECTION, (SPECIAL)	70101800
780.0	FOOT	SHORT-TERM PAVEMENT MARKING	70300100
1040.0	SQ FT	WORK ZONE PAVEMENT MARKING REMOVAL	70301000
30.4	SQ FT	THERMOPLASTIC PAVEMENT MARKING - LETTERS AND SYMBOLS	78000100 *
5998.0	FOOT	THERMOPLASTIC PAVEMENT MARKING - LINE 4"	78000200 *
260.0	FOOT	THERMOPLASTIC PAVEMENT MARKING - LINE 6"	78000400 *
290.0	FOOT	THERMOPLASTIC PAVEMENT MARKING - LINE 12"	78000600 *
54.0	FOOT	THERMOPLASTIC PAVEMENT MARKING - LINE 24"	78000650 *
600.0	FOOT	DETECTOR LOOP, TYPE I	88600100 *

* SPECIALTY ITEMS

SECTION	COUNTY	TOTAL SHEETS	SHEET NO.
08-00072-00-RS	WABASH	8	3
FAU ROUTES 8655 & 8659			
PROJECT M-ARA-5048(020) CONTRACT 95597			



PAY ITEM	ESTIMATED QUANTITY
HOT-MIX ASPHALT SURFACE COURSE, MIX "C", N70	265 TON
HOT-MIX ASPHALT SURFACE REMOVAL, 2"	2119 SQ YD

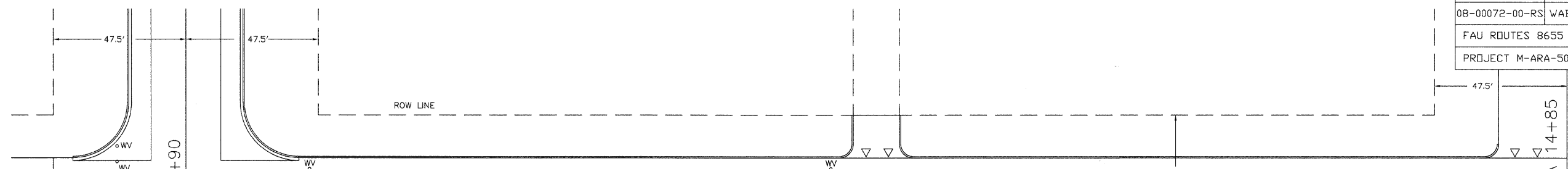
PAY ITEM	ESTIMATED QUANTITY
HOT-MIX ASPHALT SURFACE COURSE, MIX "C", N70	169 TON
HOT-MIX ASPHALT SURFACE REMOVAL, 2"	1353 SQ YD

SCALE 1" = 20'

△ DENOTES LIMITS OF SURF. REMOVAL AND REPAVING

THIRD ST. STA. 9+90 = MARKET ST. STA. 9+90

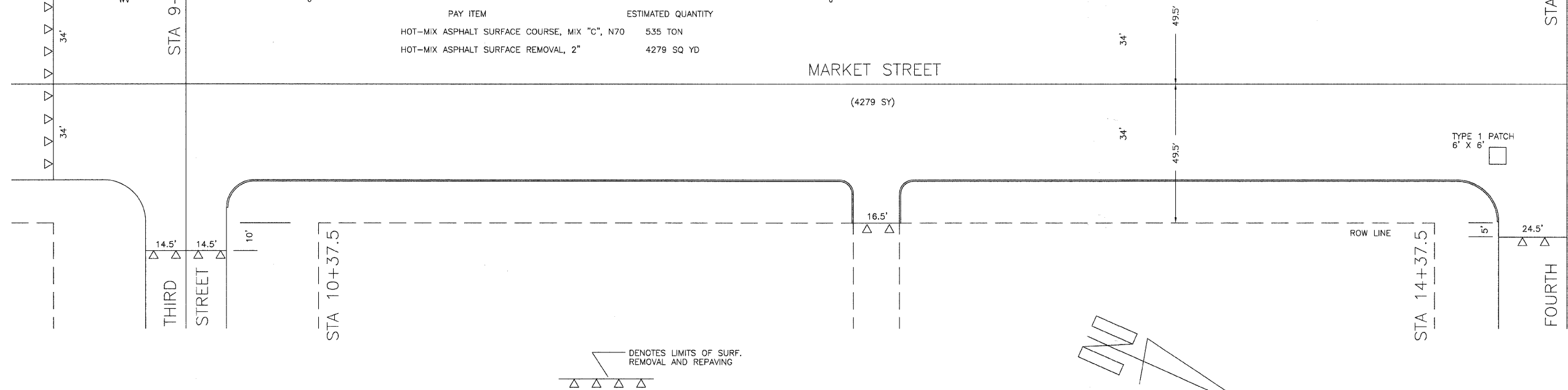
SECTION	COUNTY	TOTAL SHEETS	SHEET NO.
08-00072-00-RS	WABASH	8	4
FAU ROUTES 8655 & 8659			
PROJECT M-ARA-5048(020) CONTRACT 95597			



PAY ITEM	ESTIMATED QUANTITY
HOT-MIX ASPHALT SURFACE COURSE, MIX "C", N70	535 TON
HOT-MIX ASPHALT SURFACE REMOVAL, 2"	4279 SQ YD

MARKET STREET

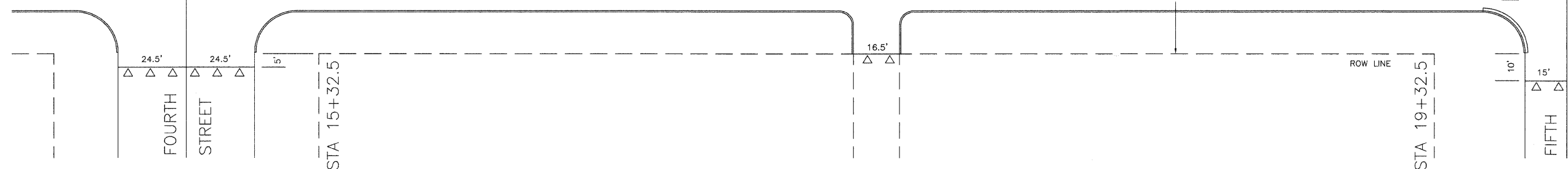
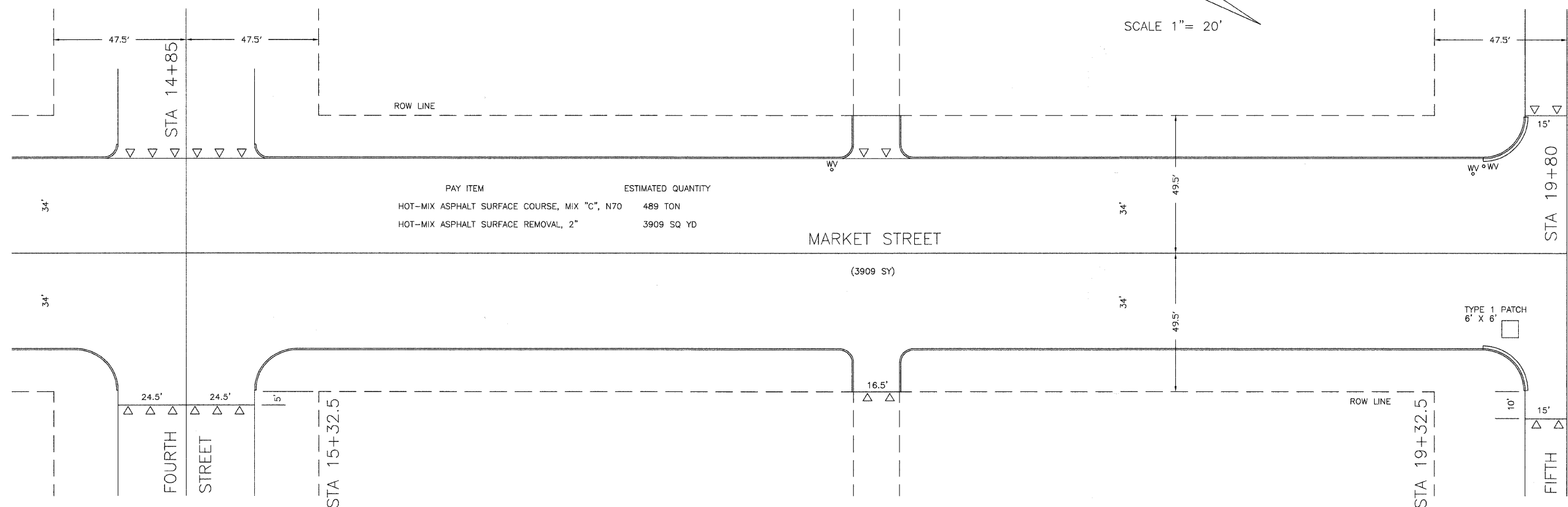
(4279 SY)



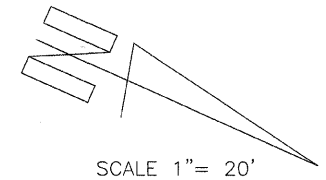
PAY ITEM	ESTIMATED QUANTITY
HOT-MIX ASPHALT SURFACE COURSE, MIX "C", N70	489 TON
HOT-MIX ASPHALT SURFACE REMOVAL, 2"	3909 SQ YD

MARKET STREET

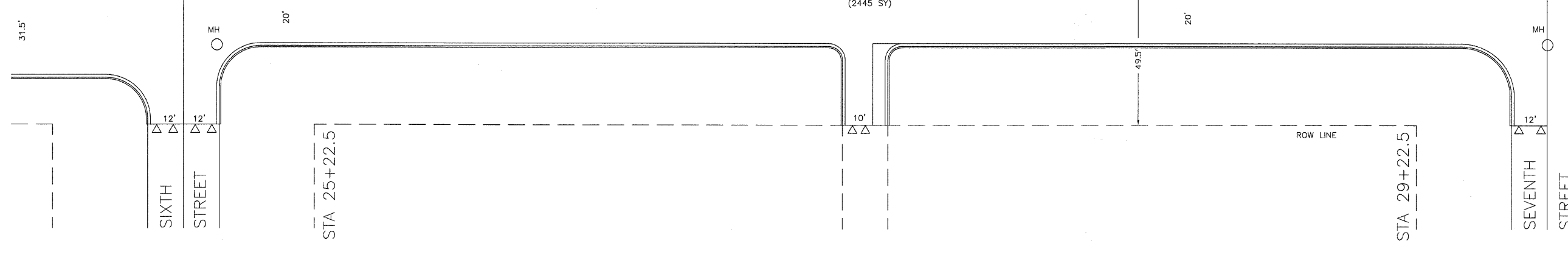
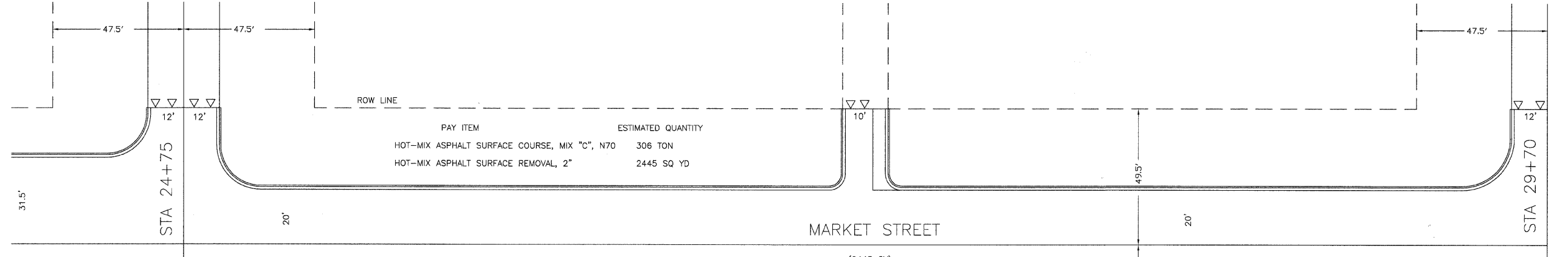
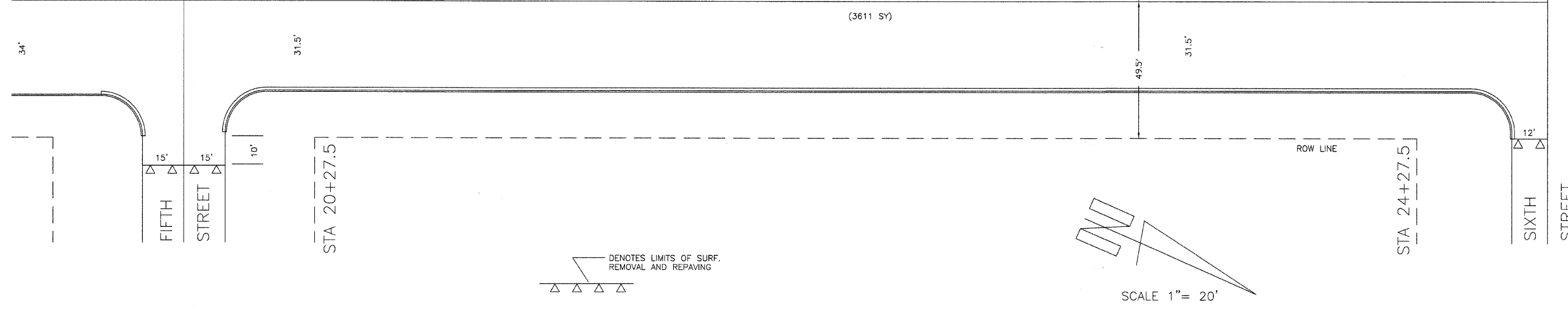
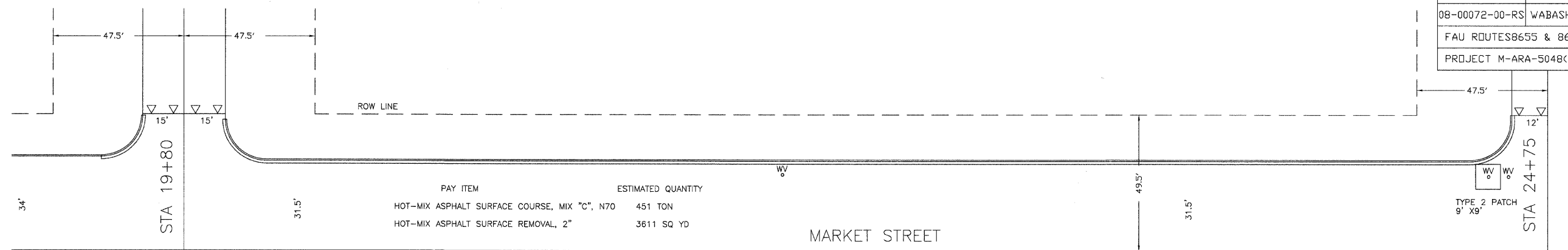
(3909 SY)



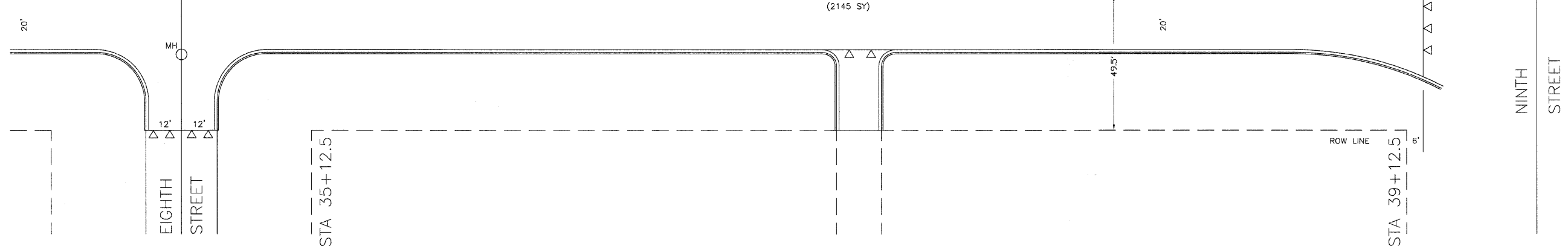
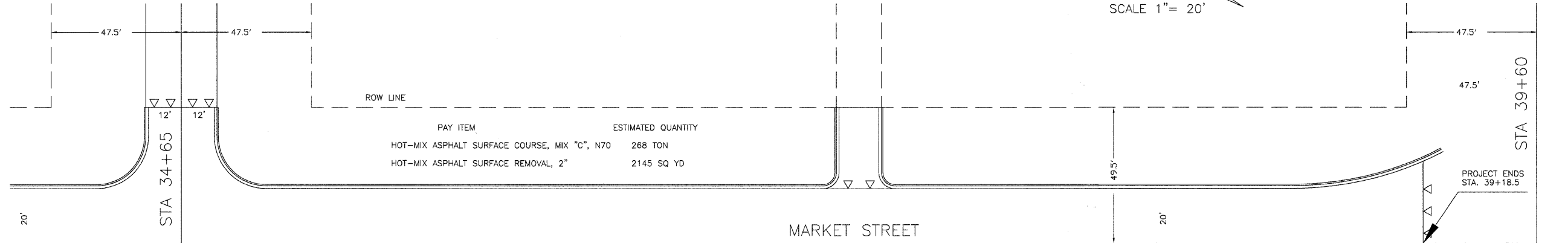
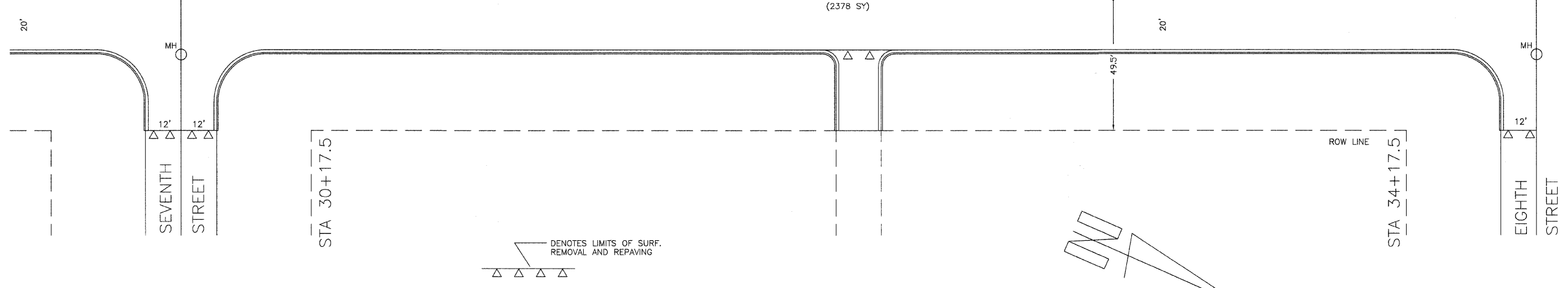
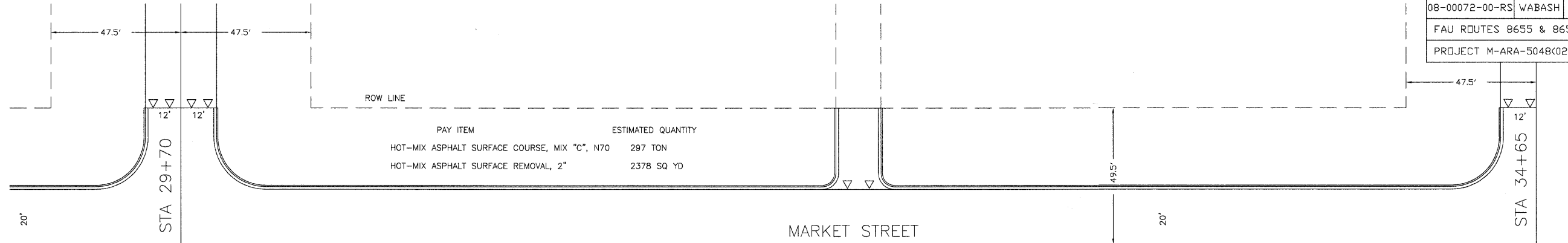
DENOTES LIMITS OF SURF. REMOVAL AND REPAVING



SECTION	COUNTY	TOTAL SHEETS	SHEET NO.
08-00072-00-RS	WABASH	8	5
FAU ROUTES 8655 & 8659			
PROJECT M-ARA-5048(020) CONTRACT 95597			

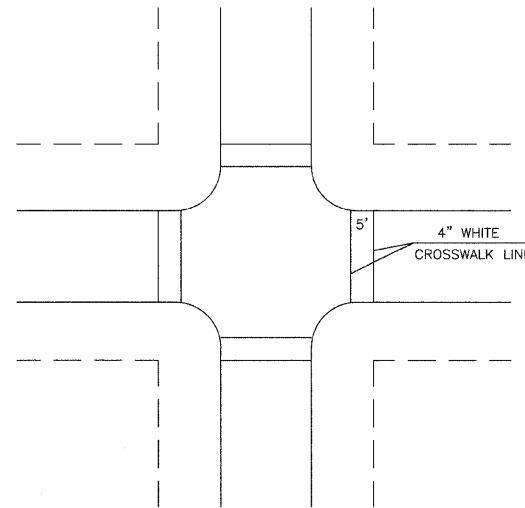


SECTION	COUNTY	TOTAL SHEETS	SHEET NO.
08-00072-00-RS	WABASH	8	6
FAU ROUTES 8655 & 8659			
PROJECT M-ARA-5048(020) CONTRACT 95597			

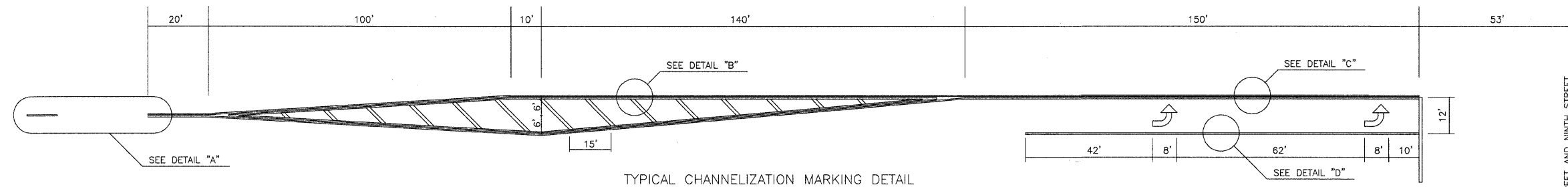
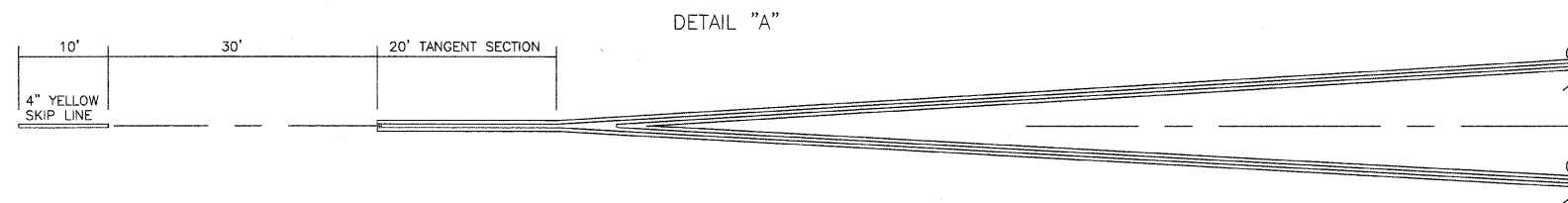
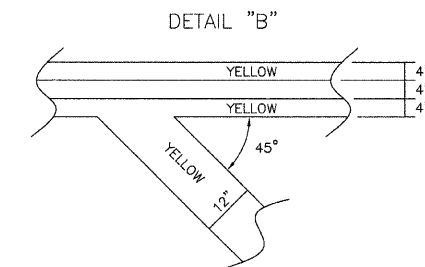
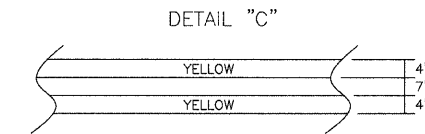
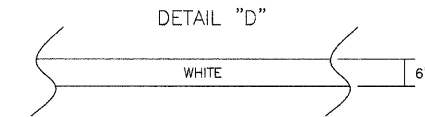


SECTION	COUNTY	TOTAL SHEETS	SHEET NO.
08-00072-00-RS	WABASH	8	7
FAU ROUTES 8655 & 8659			
PROJECT M-ARA-5048(020) CONTRACT 95597			

THERMOPLASTIC PAVEMENT MARKING SCHEDULE						
LOCATION	LETTERS & SYMBOLS (WHITE)	LINE - 4" (WHITE)	LINE - 4" (YELLOW)	LINE - 6" (WHITE)	LINE - 12" (YELLOW)	LINE - 24" (WHITE)
	SQ. FT.	LIN. FT.	LIN. FT.	LIN. FT.	LIN. FT.	LIN. FT.
CROSSWALK LINES (ALL INTERSECTIONS)		2618				
THIRD STREET STA. 0+53 TO 4+53	15.2		1360	130	145	27
THIRD STREET STA. 4+53 TO 9+90			120			
MARKET STREET STA. 9+90 TO 35+07			540			
MARKET STREET STA. 35+07 TO 39+07	15.2		1360	130	145	27
TOTAL	30.4	2618	3380	260	290	54

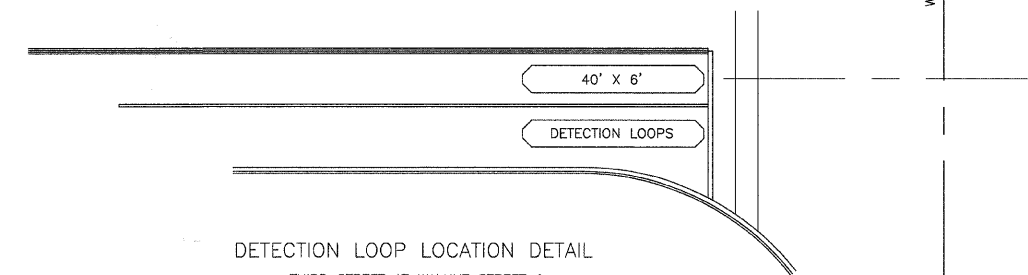


TYPICAL INTERSECTION CROSSWALK MARKING
 THIRD STREET - AT WALNUT** & CHESTNUT STREETS
 MARKET STREET - AT 3RD, 4TH, 5TH, 6TH, 7TH, 8TH, & 9TH** STREETS
 (** ONE LEG ONLY THIS INTERSECTION)



TYPICAL CHANNELIZATION MARKING DETAIL

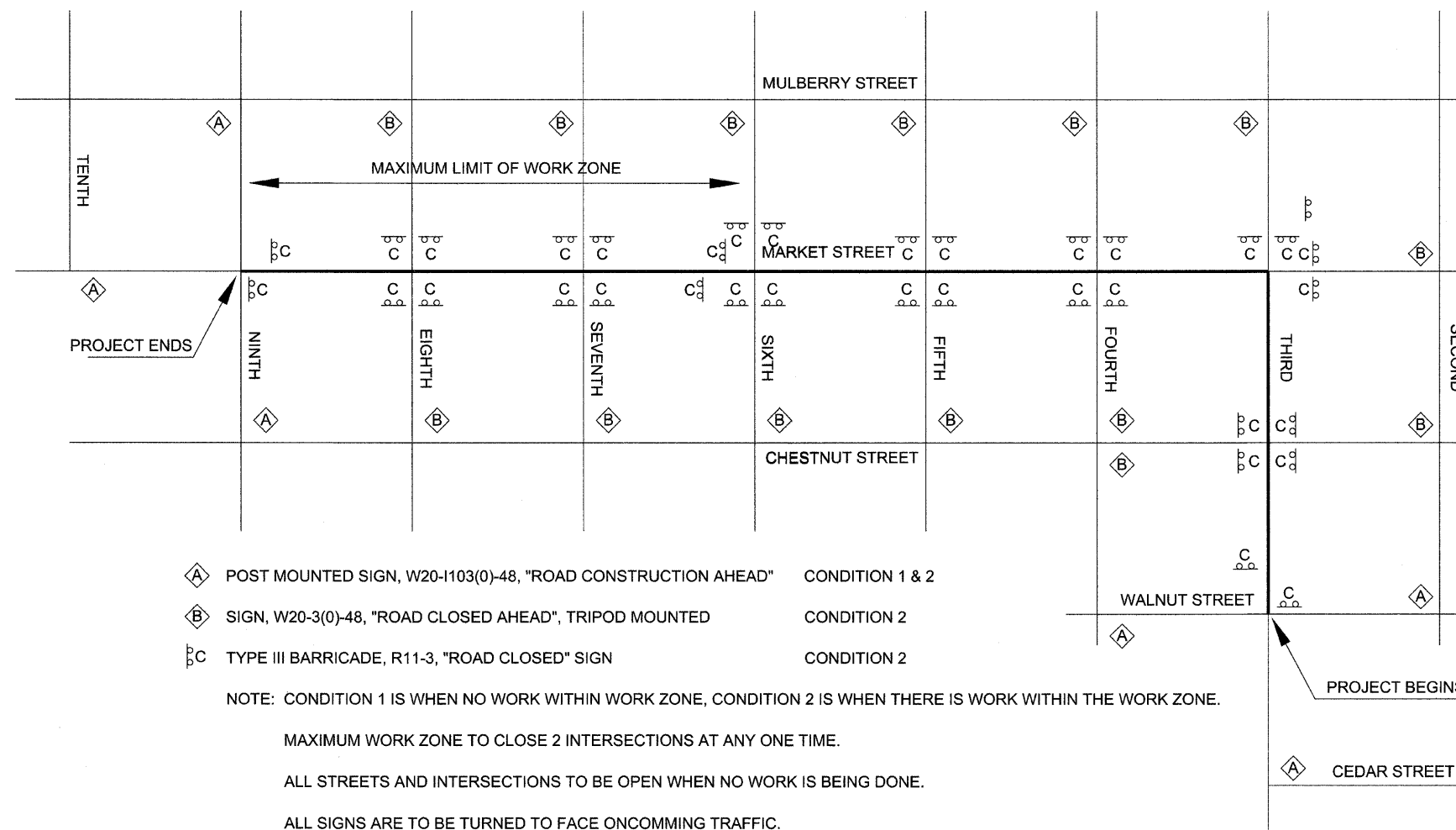
THIRD STREET - STA. XXX TO STA. XXX
 MARKET STREET - STA. XXX TO STA. XXX



DETECTION LOOP LOCATION DETAIL

THIRD STREET AT WALNUT STREET &
 MARKET STREET AT NINTH STREET

SECTION	COUNTY	TOTAL SHEETS	SHEET NO.
08-0072-00-RS	WABASH	8	8
FAU ROUTES 8655 & 8659			
PROJECT M-ARA-5048(020) CONTRACT 95577			



- Ⓐ POST MOUNTED SIGN, W20-1103(0)-48, "ROAD CONSTRUCTION AHEAD" CONDITION 1 & 2
- Ⓑ SIGN, W20-3(0)-48, "ROAD CLOSED AHEAD", TRIPOD MOUNTED CONDITION 2
- BC TYPE III BARRICADE, R11-3, "ROAD CLOSED" SIGN CONDITION 2

NOTE: CONDITION 1 IS WHEN NO WORK WITHIN WORK ZONE, CONDITION 2 IS WHEN THERE IS WORK WITHIN THE WORK ZONE.

MAXIMUM WORK ZONE TO CLOSE 2 INTERSECTIONS AT ANY ONE TIME.

ALL STREETS AND INTERSECTIONS TO BE OPEN WHEN NO WORK IS BEING DONE.

ALL SIGNS ARE TO BE TURNED TO FACE ONCOMING TRAFFIC.