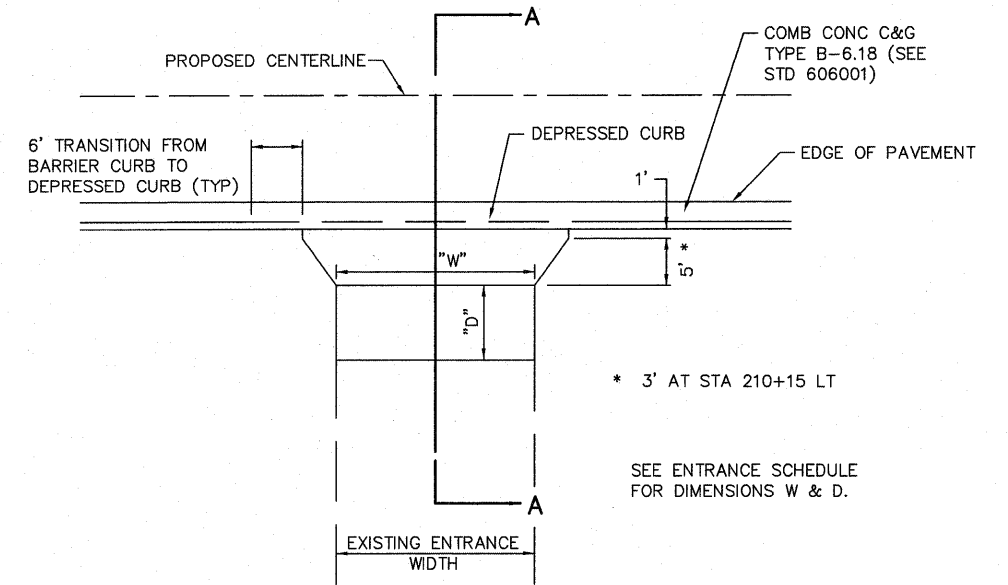


PAVEMENT SCHEDULE

STATION	STATION	OFFSET	HMA BASE CSE 6"	BIT MATLS PR CT (NOTE 1)	AGG PR CT (NOTE 1)	LEV BIND MM N70 (NOTE 1)	HMA SC SC N70 (NOTE 1)	PAVEMENT REMOVAL	HMA SURF REM 2"	HMA SURF REM VAR DP	CL D PATCH T2 6	CL D PATCH T4 6	REPAIR UNSTABLE SUBBASE
			35501308 (SQ YD)	40600100 (GAL)	40600100 (TON)	40600635 (TON)	40603315 (TON)	44000100 (SQ YD)	44000157 (SQ YD)	44000198 (SQ YD)	44201717 (SQ YD)	44201723 (SQ YD)	(SQ YD)
OSTLE DRIVE													
200+00	208+25	CL		179	4		267		2,381				
200+45	200+85	RT										24	24
201+60	202+00	LT										48	48
202+02	202+72	LT									13		
202+03	202+53	RT									10		
205+19	205+78	RT									7		
208+25	210+55	CL	27	44	1	4	69	17		586			
209+15	209+80	RT										44	
210+55	213+03	CL		51	1		76		683				
211+90	212+15	CL										15	15
TOTAL:			27	274	6	4	412	17	3,064	586	30	131	87

PAVEMENT NOTES:

- APPLICATION RATES USED FOR QUANTITY ESTIMATES ARE AS FOLLOWS:
 BITUMINOUS MATERIALS PRIME COAT 0.075 GAL/SY
 AGGREGATE (PRIME COAT) 3 LBS/SY
 HOT-MIX ASPHALT & LEVELING BINDER 112 LBS/SY/INCH THICKNESS



PRIVATE ENTRANCE (PE)

PAVEMENT MARKING SCHEDULE

STATION	STATION	OFFSET	SHORT-TERM PAVT MKING	WORK ZONE PAVT MK REM	THPL PVT MK LINE 4 (NOTE 1)	THPL PVT MK LINE 24 (NOTE 1)	RAISED REFL PAVT MKR (NOTE 2)
			70300100 (FOOT)	70301000 (SQ FT)	78000200 (FOOT)	78000650 (FOOT)	78100100 (EACH)
OSTLE DRIVE							
200+00	208+35	CL	76	25	209		
202+15	202+35	LT				20	
202+26	202+42	RT				16	
205+45	205+63	RT				18	
208+35	210+45	CL	20	7	420		6
210+45	213+03	CL	24	8	65		
212+97	212+99	RT				19	
TOTAL:			120	40	694	73	6

PAVEMENT MARKING NOTES:

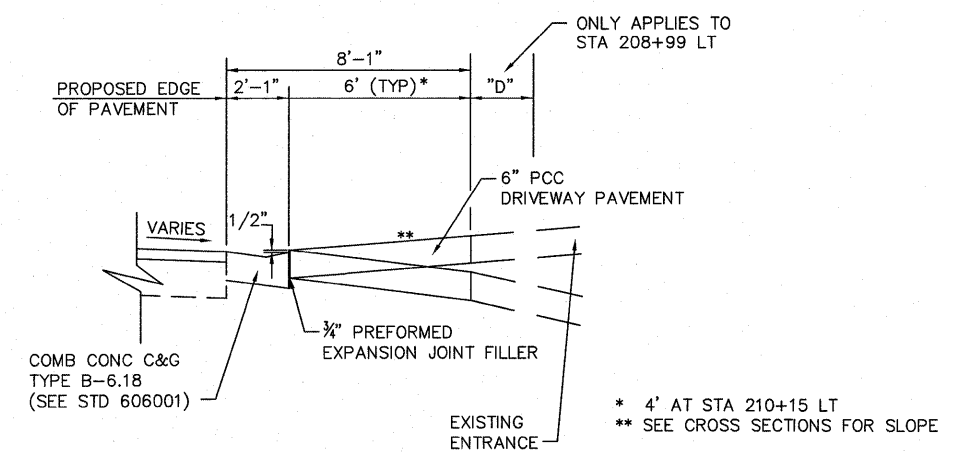
- SEE HIGHWAY STANDARD 780001 FOR PAVEMENT MARKING DETAILS
- SEE HIGHWAY STANDARD 781001 FOR REFLECTIVE PAVEMENT MARKER DETAILS

SIGN SCHEDULE

STATION	OFFSET	TYPE	SIZE (FT X FT)	SIGN PANEL TYPE 1 (NOTE 1)	WOOD SIGN SUPPORT
				72000100 (SQ FT)	73000100 (FOOT)
OSTLE DRIVE					
207+00	RT	W1-1R	2 X 2	4.0	13
207+00	RT	W13-1	1.5 X 1.5	2.3	
208+30	LT	W1-8	1 X 1.5	3.0	13
208+70	LT	W1-8	1 X 1.5	3.0	13
209+25	LT	W1-8	1 X 1.5	3.0	13
209+80	LT	W1-8	1 X 1.5	3.0	13
210+45	LT	W1-8	1 X 1.5	3.0	13
211+60	LT	W1-1L	2 X 2	4.0	13
211+60	LT	W13-1	1.5 X 1.5	2.3	
TOTAL:				27.5	91

SIGN NOTES:

- WHEN USING TYPE W1-8, SIGN PANEL IS PLACED ON BOTH SIDES OF WOOD SIGN SUPPORT



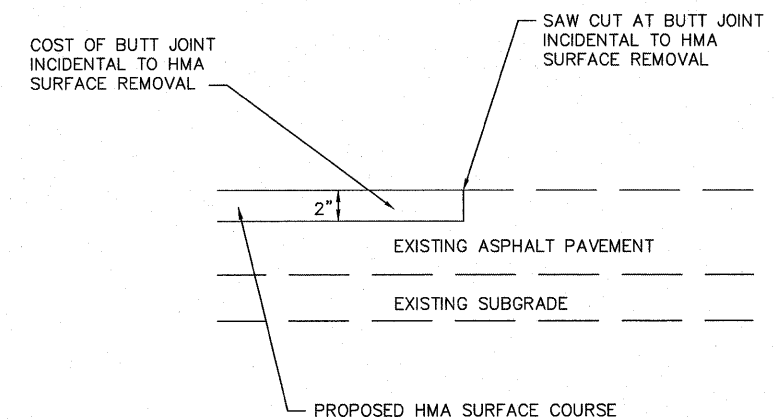
SECTION A-A

ENTRANCE SCHEDULE

STATION (NOTE 1)	OFFSET	ENTRANCE TYPE	ENTRANCE WIDTH "W" (NOTE 1)	ENTRANCE DEPTH "D"	EXISTING SURFACE TYPE	PCC DRIVEWAY PAVT 6 (NOTE 2)	DRIVEWAY PAVEMENT REM
			(FOOT)	(FOOT)		42300200 (SQ YD)	44000200 (SQ YD)
OSTLE DRIVE							
208+84	RT	PE	17.5	0	CONC	16	15
208+99	LT	PE	32.5	3	CONC	39	34
209+45	LT	PE	12.5	0	ASPHALT	13	2
209+64	LT	PE	12	0	AGG	12	
210+15	LT	PE	15	0	ASPHALT	8	9
TOTAL						88	60

ENTRANCE NOTES:

- PRIOR TO CONSTRUCTION, THE CONTRACTOR SHALL CONTACT EACH PROPERTY OWNER AND VERIFY THE LOCATION AND WIDTH OF ALL ENTRANCES.
- DEPRESSED CURB AND GUTTER THROUGH ENTRANCES SHALL BE MEASURED FOR PAYMENT AS COMBINATION CONCRETE CURB AND GUTTER, TYPE B-6.18



BUTT JOINT DETAIL