

F.A.U. RTE.	SECTION	COUNTY	TOTAL SHEETS	SHEET NO.
9125	09-00092-00-RS	MADISON	9	1
STA. 200+00		TO STA. 213+03		
COVER SHEET		CONTRACT NO. 97389		
FEDERAL AID PROJECT				

INDEX OF SHEETS

SHEET NO.	ITEM
1	COVER SHEET
2	GENERAL NOTES/SUMMARY OF QUANTITIES
3	SCHEDULES/CONSTRUCTION DETAILS
4	TYPICAL SECTIONS
5-7	PLAN SHEETS
8-9	CROSS SECTIONS

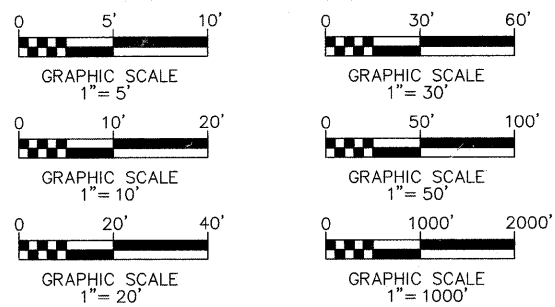
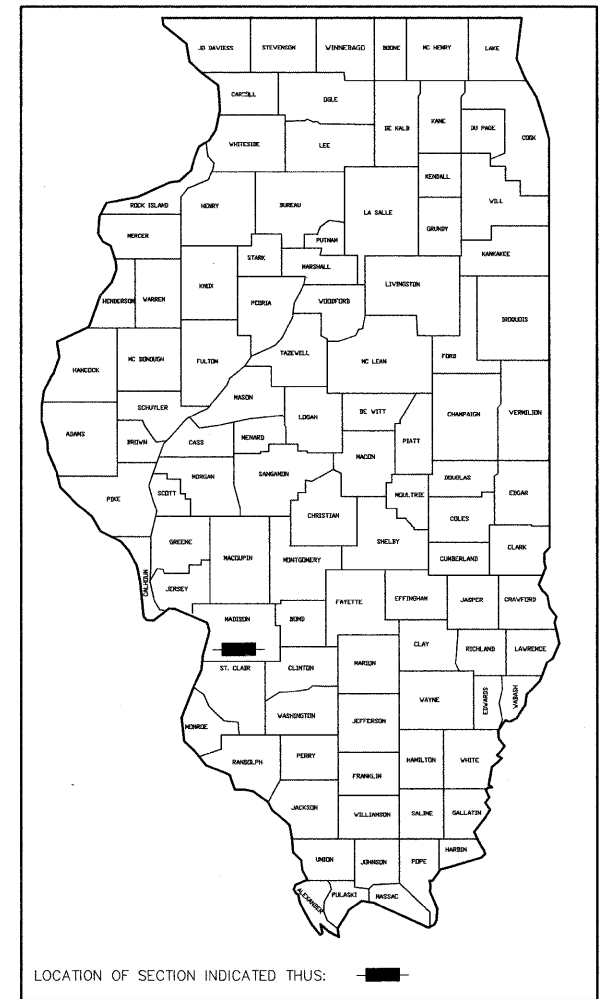
STATE OF ILLINOIS DEPARTMENT OF TRANSPORTATION PLANS FOR PROPOSED

ARRA PROGRAM
RESURFACING
OSTLE DRIVE (FAU 9125)
SECTION: 09-00092-00-RS
PROJECT: ARA-5011 (270)
JOB: C-98-349-09
CITY OF COLLINSVILLE
MADISON COUNTY

HIGHWAY STANDARDS

- 000001-05
- 442201-03
- 606001-04
- 701301-03
- 701311-03
- 701501-05
- 701901-01
- 720001-01
- 720006-02
- 780001-02
- 781001-03
- BLR 18-5

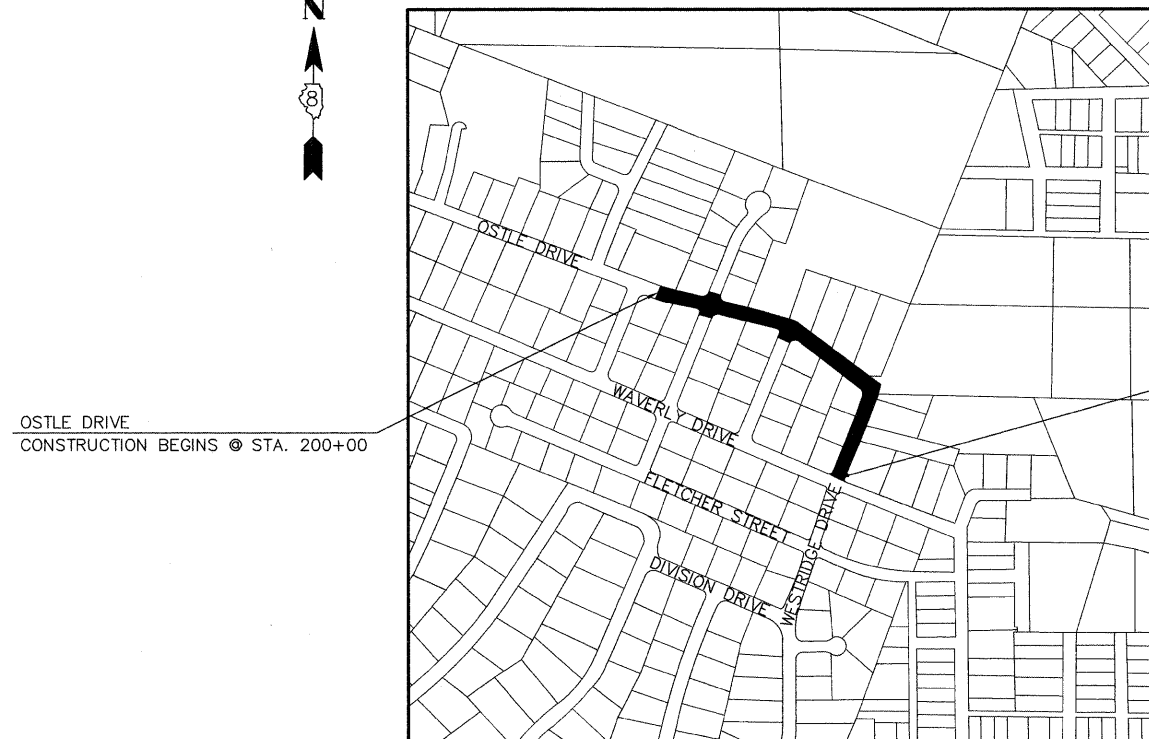
SCALE IN FEET
PLAN - 1" = 20'
CROSS SECTIONS VERT. - 1" = 5'
CROSS SECTIONS HORIZ. - 1" = 10'



FULL SIZE PLANS HAVE BEEN PREPARED USING STANDARD ENGINEERING SCALES. REDUCED SIZED PLANS WILL NOT CONFORM TO STANDARD SCALES. IN MAKING MEASUREMENTS ON REDUCED PLANS, THE ABOVE SCALES MAY BE USED.

JOINT UTILITY LOCATING INFORMATION FOR EXCAVATIONS PHONE: 800-892-0123

ROADWAY CLASSIFICATION = URBAN COLLECTOR
DESIGN SPEED = 25 MPH
CURRENT TRAFFIC = 1,400
DESIGN YEAR = 2029



LOCATION MAP

SCALE: 1" = 30'

NET LENGTH OF PROJECT = 1,303 FEET (0.247 MILES)

OSTLE DRIVE
CONSTRUCTION ENDS @ STA. 213+03

STATE OF ILLINOIS DEPARTMENT OF TRANSPORTATION		
APPROVED	<i>John Miller</i>	2009
<small>JOHN MILLER, MAYOR OF COLLINSVILLE</small>		
PASSED	<i>DRC</i>	2009
<small>DISTRICT 8 ENGINEER OF LOCAL ROADS & STREETS</small>		
RELEASING FOR BID BASED ON LIMITED REVIEW	<i>Philip A. Murphy</i>	2009
<small>DEPUTY DIRECTOR OF HIGHWAYS REGION 5 ENGINEER</small>		



EXPIRES 11/30/09

Philip A. Murphy
PHILIP A. MURPHY
P.E. NO. 062-054536
DATE: 4/8/09



GENERAL NOTES

- UNDERGROUND FACILITIES, STRUCTURES AND UTILITIES HAVE BEEN PLOTTED FROM AVAILABLE SURVEYS AND RECORDS. THEIR LOCATIONS MUST BE CONSIDERED TO BE APPROXIMATE ONLY. IT IS POSSIBLE THERE MAY BE OTHERS, THE EXISTENCE OF WHICH IS NOT PRESENTLY KNOWN OR SHOWN. IT IS THE CONTRACTOR'S RESPONSIBILITY TO DETERMINE THEIR EXISTENCE AND EXACT LOCATION AND TO AVOID DAMAGE THERETO. ILLINOIS LAW REQUIRES A MINIMUM 48-HOUR NOTICE TO ALL UTILITY COMPANIES BEFORE DIGGING. FIELD LOCATIONS OF UNDERGROUND FACILITIES MAY BE OBTAINED BY CALLING THE J.U.L.I.E. SYSTEM AT 800-892-0123 AND PROVIDING 48 HOURS ADVANCE NOTICE. NON-J.U.L.I.E. MEMBERS MUST BE NOTIFIED INDIVIDUALLY. AGENCIES KNOWN TO HAVE FACILITIES WITHIN THE PROJECT LIMITS ARE LISTED BELOW.
- ANY FACILITIES OR APPURTENANCES WHICH ARE THE PROPERTY OF ANY PUBLIC UTILITY LOCATED WITHIN THE LIMITS OF CONSTRUCTION SHALL BE RELOCATED OR ADJUSTED BY THEIR RESPECTIVE OWNERS. THE CONTRACTOR SHALL NOTIFY AND COOPERATE WITH THE OWNERS OF ANY SUCH FACILITY IN THEIR REMOVAL AND REARRANGEMENT OPERATIONS IN ORDER THAT THESE OPERATIONS AND THE CONSTRUCTION OF THIS PROJECT MAY PROGRESS IN A REASONABLE MANNER. ALL ROADSIDE OBJECTS (UTILITY POLES, FIRE HYDRANTS, SIGNS, ETC.) SHALL BE RELOCATED TO PROVIDE A MINIMUM OF 1.5 FEET CLEARANCE, MEASURED FROM THE FACE OF CURB TO THE NEAR EDGE OF THE OBJECT.
- THE FOLLOWING UTILITY COMPANIES MAY HAVE FACILITIES LOCATED WITHIN THE LIMITS OF CONSTRUCTION WHICH MAY REQUIRE ADJUSTMENT, RELOCATION OR REMOVAL. ALL ARE MEMBERS OF J.U.L.I.E., UNLESS NOTED OTHERWISE.

AMEREN IP (GAS & ELECTRIC)
 2600 NORTH CENTER
 MARYVILLE, IL 62062
 (618) 346-1287

CHARTER COMMUNICATIONS (CABLE TV)
 210 WEST DIVISION STREET
 MARYVILLE, IL 62062
 (618) 345-8121

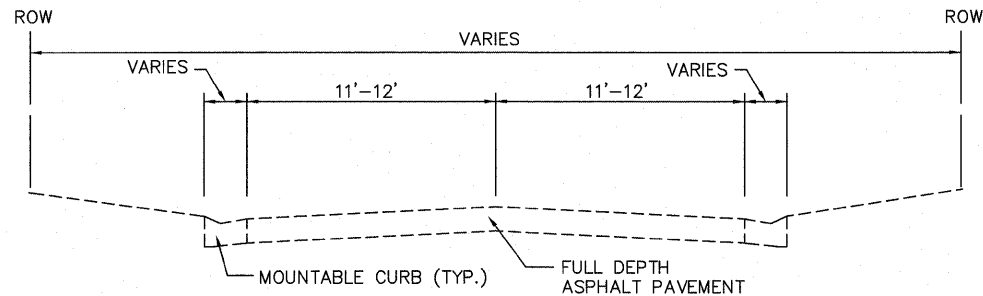
CITY OF COLLINSVILLE (WATER & SEWER)
 125 S. CENTER STREET
 COLLINSVILLE, IL 62234
 (618) 344-5200

AT&T (TELEPHONE)
 2600 N. CENTER STREET
 COLLINSVILLE, IL 62234
 (618) 346-4600
- THE ABOVE INFORMATION REPRESENTS THE BEST INFORMATION AVAILABLE TO THE LOCAL AGENCY AND IS ONLY INCLUDED FOR THE CONVENIENCE OF THE BIDDER. IT IS UNDERSTOOD AND AGREED THAT THE CONTRACTOR HAS TAKEN THE FOREGOING INTO CONSIDERATION IN PREPARING HIS/HER BID, AND NO ADDITIONAL COMPENSATION WILL BE ALLOWED FOR ANY DELAYS OR INCONVENIENCE CAUSED BY SAME.
- THE CONTRACTOR SHALL VERIFY ALL DIMENSIONS AND CONDITIONS IN THE FIELD PRIOR TO ORDERING MATERIALS AND COMMENCING CONSTRUCTION.
- THE CONTRACTOR SHALL STAGE ALL WORK IN SUCH A WAY AS TO MAINTAIN INGRESS AND EGRESS TO ALL ABUTTING PROPERTIES AT ALL TIMES DURING CONSTRUCTION.
- THE CONTRACTOR SHALL CONFINE ALL OPERATIONS TO THE AREA LOCATED WITHIN THE CONSTRUCTION LIMIT LINES, SHOWN ON THE PLANS. ANY AREA DISTURBED BEYOND THESE LIMITS SHALL BE RESTORED TO ITS ORIGINAL CONDITION AT THE CONTRACTOR'S EXPENSE.
- THE CONTRACTOR SHALL FERTILIZE, SEED AND MULCH ALL EARTH SURFACES (OUTSIDE OF THE CONSTRUCTION LIMITS) DISTURBED BY CONSTRUCTION AT HIS OWN COST. NO ADDITIONAL COMPENSATION WILL BE ALLOWED FOR SEEDING DISTURBED AREAS BEYOND THE CONSTRUCTION LIMITS LINE.
- ANY UNSUITABLE MATERIAL ENCOUNTERED DURING CONSTRUCTION SHALL BE REMOVED BY THE CONTRACTOR AND REPLACED WITH SUITABLE MATERIAL AS APPROVED BY THE ENGINEER. IF NOT SPECIFIED IN THE PLANS AS "REPAIR UNSTABLE SUBBASE", THIS WORK WILL BE PAID FOR ACCORDING TO ARTICLE 109.04 OF THE "STANDARD SPECIFICATIONS FOR ROAD AND BRIDGE CONSTRUCTION.
- THE CONTRACTOR SHALL NOTE THE LOCATION OF ALL MANHOLE AND VALVE VAULT FRAMES AND LIDS LOCATED WITHIN THE RESURFACING LIMITS. APPROPRIATE CARE SHALL BE TAKEN TO PROTECT THESE ITEMS DURING MILLING OPERATIONS.
- ALL PATCHING ON THIS PROJECT SHALL BE COMPLETED AFTER MILLING OPERATIONS. MILLED SURFACE MUST BE RESURFACED WITHIN 10 CALENDER DAYS. FULL DEPTH SAW CUTS SHALL BE REQUIRED ALONG THE LIMITS OF THE PATCH. FULL DEPTH SAW CUTS WILL NOT BE PAID FOR SEPARATELY, BUT SHALL BE INCLUDED IN THE CONTRACT UNIT COST BID OF THE VARIOUS CLASS D PATCHES INVOLVED AND NO ADDITIONAL COMPENSATION WILL BE ALLOWED.
- THE PAVEMENT MARKING LOCATIONS SHOWN IN THE PLANS ARE APPROXIMATE. PROPOSED CROSSWALKS AND STOP BARS SHALL BE ADJUSTED AS DIRECTED BY THE ENGINEER, IF NECESSARY, TO MATCH FIELD CONDITIONS.
- ALL SIGN ASSEMBLIES SHALL BE MOUNTED WITH APPROPRIATE SUPPORTING CHANNELS AND HARDWARE, BUT SHALL BE INCLUDED IN THE CONTRACT UNIT COST BID OF THE SIGN PANEL - TYPE 1 INVOLVED AND NO ADDITIONAL COMPENSATION WILL BE ALLOWED.
- THE PROPERTY OWNER AT STA 209+40 RT SHALL BE NOTIFIED TO RELOCATE THE LANDSCAPE AREA PRIOR TO CONSTRUCTION ACTIVITIES. IF OWNER CHOOSES NOT TO RELOCATE THE LANDSCAPING, REMOVAL WILL BE NECESSARY. THIS ITEM SHALL BE PAID FOR AS EARTH EXCAVATION.

SUMMARY OF QUANTITIES

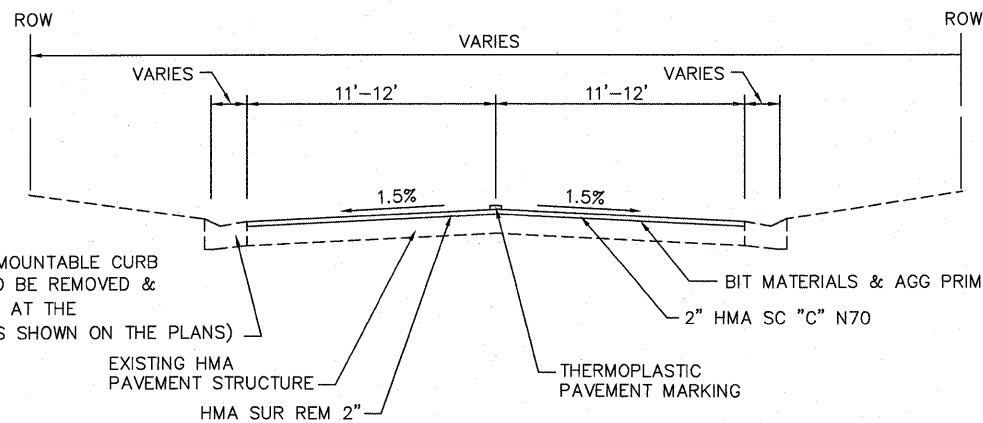
CODE NO.	ITEM	UNIT	TOTAL QUANTITIES
20200100	EARTH EXCAVATION	CU YD	22
21101615	TOPSOIL FURNISH AND PLACE, 4"	SQ YD	195
25000110	SEEDING, CLASS 1A	ACRE	0.1
25000400	NITROGEN FERTILIZER NUTRIENT	POUND	9
25000500	PHOSPHORUS FERTILIZER NUTRIENT	POUND	9
25000600	POTASSIUM FERTILIZER NUTRIENT	POUND	9
25100115	MULCH, METHOD 2	ACRE	0.1
35501308	HOT-MIX ASPHALT BASE COURSE, 6"	SQ YD	27
40600100	BITUMINOUS MATERIALS (PRIME COAT)	GALLON	274
40600300	AGGREGATE (PRIME COAT)	TON	6
40600635	LEVELING BINDER (MACHINE METHOD), N70	TON	4
40603315	HOT-MIX ASPHALT SURFACE COURSE, MIX "C", N70	TON	412
42300200	PORTLAND CEMENT CONCRETE DRIVEWAY PAVEMENT, 6 INCH	SQ YD	88
44000100	PAVEMENT REMOVAL	SQ YD	17
* 44000157	HOT-MIX ASPHALT SURFACE REMOVAL, 2"	SQ YD	3,064
44000198	HOT-MIX ASPHALT SURFACE REMOVAL, VARIABLE DEPTH	SQ YD	586
44000200	DRIVEWAY PAVEMENT REMOVAL	SQ YD	60
44000300	CURB REMOVAL	FOOT	1,077
44201717	CLASS D PATCHES, TYPE II, 6 INCH	SQ YD	30
44201723	CLASS D PATCHES, TYPE IV, 6 INCH	SQ YD	131
* 60600505	CONCRETE CURB (SPECIAL)	FOOT	438
60604400	COMBINATION CONCRETE CURB AND GUTTER, TYPE B-6.18	FOOT	460
67100100	MOBILIZATION	L SUM	1
70102620	TRAFFIC CONTROL AND PROTECTION, STANDARD 701501	L SUM	1
70300100	SHORT-TERM PAVEMENT MARKING	FOOT	120
70301000	WORK ZONE PAVEMENT MARKING REMOVAL	SQ FT	40
72000100	SIGN PANEL - TYPE 1	SQ FT	27.5
S 73000100	WOOD SIGN SUPPORT	FOOT	91
S 78000200	THERMOPLASTIC PAVEMENT MARKING - LINE 4"	FOOT	694
S 78000850	THERMOPLASTIC PAVEMENT MARKING - LINE 24"	FOOT	73
S 78100100	RAISED REFLECTIVE PAVEMENT MARKER	EACH	6
* X100 8119	REPAIR UNSTABLE SUBBASE	SQ YD	87

* SPECIAL PROVISION
 S SPECIALTY ITEM



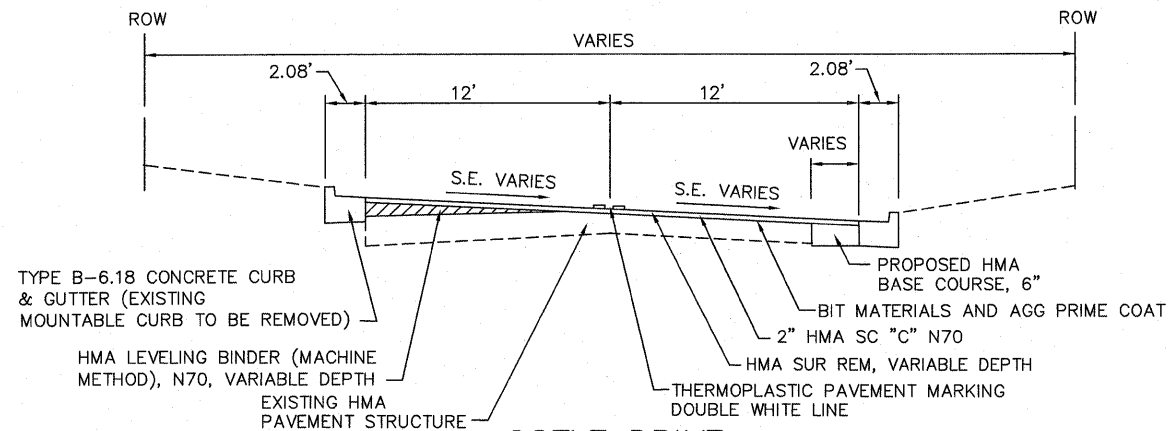
**OSTLE DRIVE
EXISTING TYPICAL SECTION**

NOT TO SCALE
 24' WIDE - STA. 200+00 TO STA. 200+37
 22' WIDE - STA. 200+37 TO STA. 206+17
 23' WIDE - STA. 206+17 TO STA. 211+00
 24' WIDE - STA. 211+00 TO STA. 213+03



**OSTLE DRIVE
PROPOSED TYPICAL SECTION**

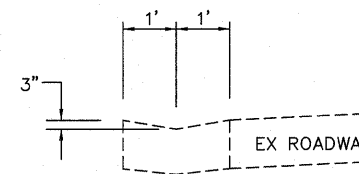
NOT TO SCALE
 24' WIDE - STA. 200+00 TO STA. 200+37
 22' WIDE - STA. 200+37 TO STA. 206+17
 23' WIDE - STA. 206+17 TO STA. 208+25
 23' WIDE - STA. 210+55 TO STA. 211+00
 24' WIDE - STA. 211+00 TO STA. 213+03



**OSTLE DRIVE
PROPOSED TYPICAL SECTION**

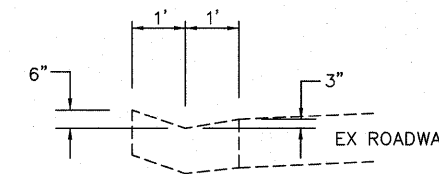
NOT TO SCALE
 STA. 208+25 TO STA. 210+55

MIXTURE USE	SURFACE	LEVELING BINDER
AC/PG	PG 64-22	PG 64-22
RAP % (MAX)	10%	10%
DESIGN AIR VOIDS	4.0% @ Ndes=70	4.0% @ Ndes=70
MIX COMPOSITION (GRADATION MIXTURE)		IL-19.0
FRICITION AGG	MIXTURE "C"	MIXTURE "C"



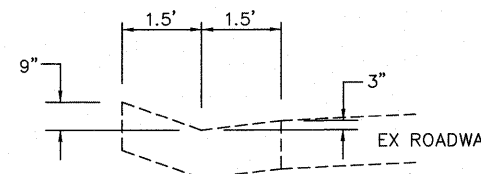
**EXISTING CURB
TYPICAL SECTION**

NOT TO SCALE
 STA. 201+83 TO STA. 202+14 RT
 STA. 202+37 TO STA. 202+73 RT
 STA. 205+05 TO STA. 205+32 RT
 STA. 205+58 TO STA. 205+78 RT



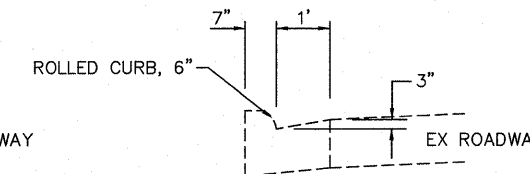
**EXISTING CURB
TYPICAL SECTION**

NOT TO SCALE
 STA. 202+00 TO STA. 202+25 LT
 STA. 202+48 TO STA. 202+75 LT
 STA. 203+48 TO STA. 203+82 RT
 STA. 205+03 TO STA. 205+63 LT



**EXISTING CURB
TYPICAL SECTION**

NOT TO SCALE
 STA. 211+55 TO STA. 211+75 RT

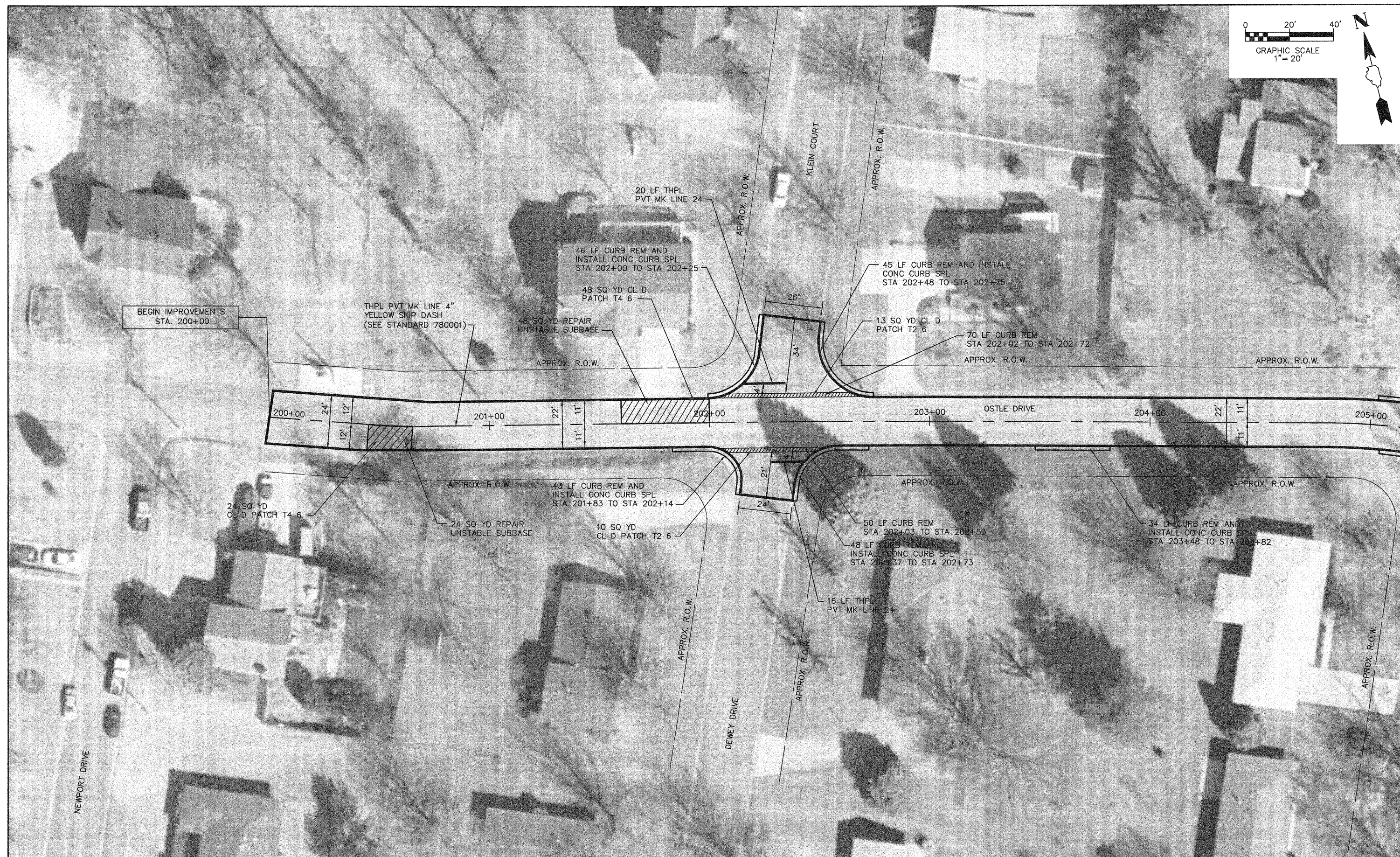
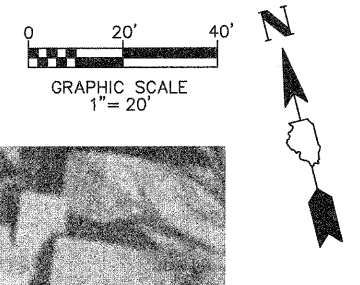


**EXISTING CURB
TYPICAL SECTION**

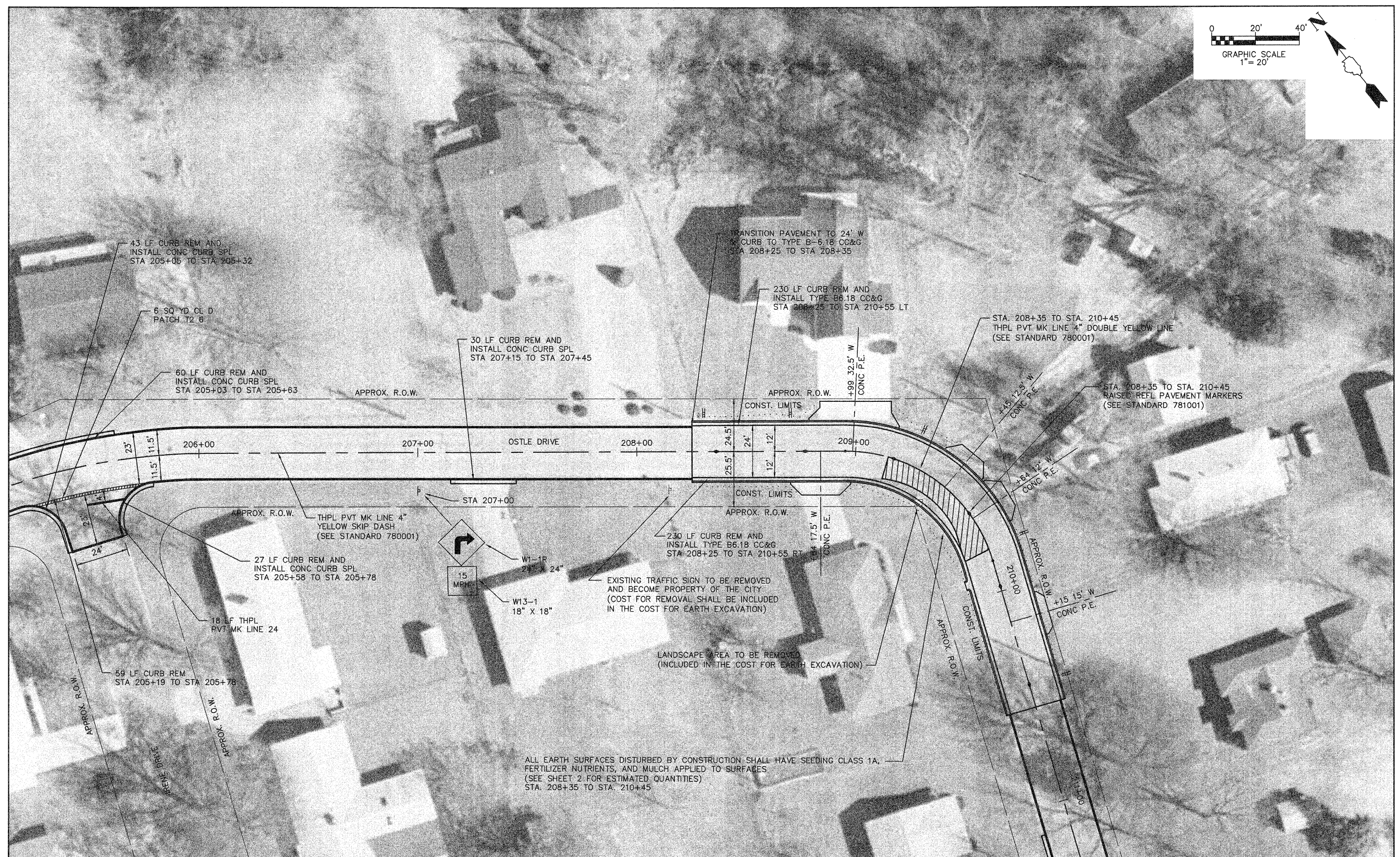
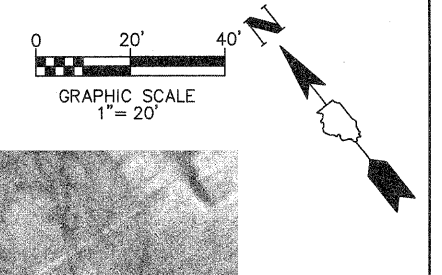
NOT TO SCALE
 STA. 207+15 TO STA. 207+45 RT
 STA. 211+13 TO STA. 211+55 RT

TYPICAL SECTIONS FOR CURB REMOVAL AND REPLACEMENT

FILE NAME =	USER NAME =	DESIGNED - JTH	REVISED -	STATE OF ILLINOIS DEPARTMENT OF TRANSPORTATION	TYPICAL SECTION SHEET	F.A.U. RTE.	SECTION	COUNTY	TOTAL SHEETS	SHEET NO.	
		DRAWN - PAM	REVISED -			9125	09-00092-00-RS	MADISON	9	4	
		CHECKED -	REVISED -			CONTRACT NO. 97389					
		DATE -	REVISED -			SCALE: NOT TO SCALE SHEET NO. 1 OF 1 SHEETS					
				FED. ROAD DIST. NO. ILLINOIS FED. AID PROJECT							



FILE NAME =	USER NAME =	DESIGNED - PAM	REVISED -	STATE OF ILLINOIS DEPARTMENT OF TRANSPORTATION	PLAN SHEET	F.A.U. RTE.	SECTION	COUNTY	TOTAL SHEETS	SHEET NO.	
		DRAWN - JTH	REVISED -			9125	09-00092-00-RS	MADISON	9	5	
		CHECKED -	REVISED -			CONTRACT NO. 97389					
		DATE -	REVISED -			SCALE: 1"=20'	SHEET NO. 1 OF 3 SHEETS	STA. 200+00 TO STA. 205+00	FED. ROAD DIST. NO. _	ILLINOIS	FED. AID PROJECT



ALL EARTH SURFACES DISTURBED BY CONSTRUCTION SHALL HAVE SEEDING CLASS 1A, FERTILIZER NUTRIENTS, AND MULCH APPLIED TO SURFACES (SEE SHEET 2 FOR ESTIMATED QUANTITIES) STA. 208+35 TO STA. 210+45

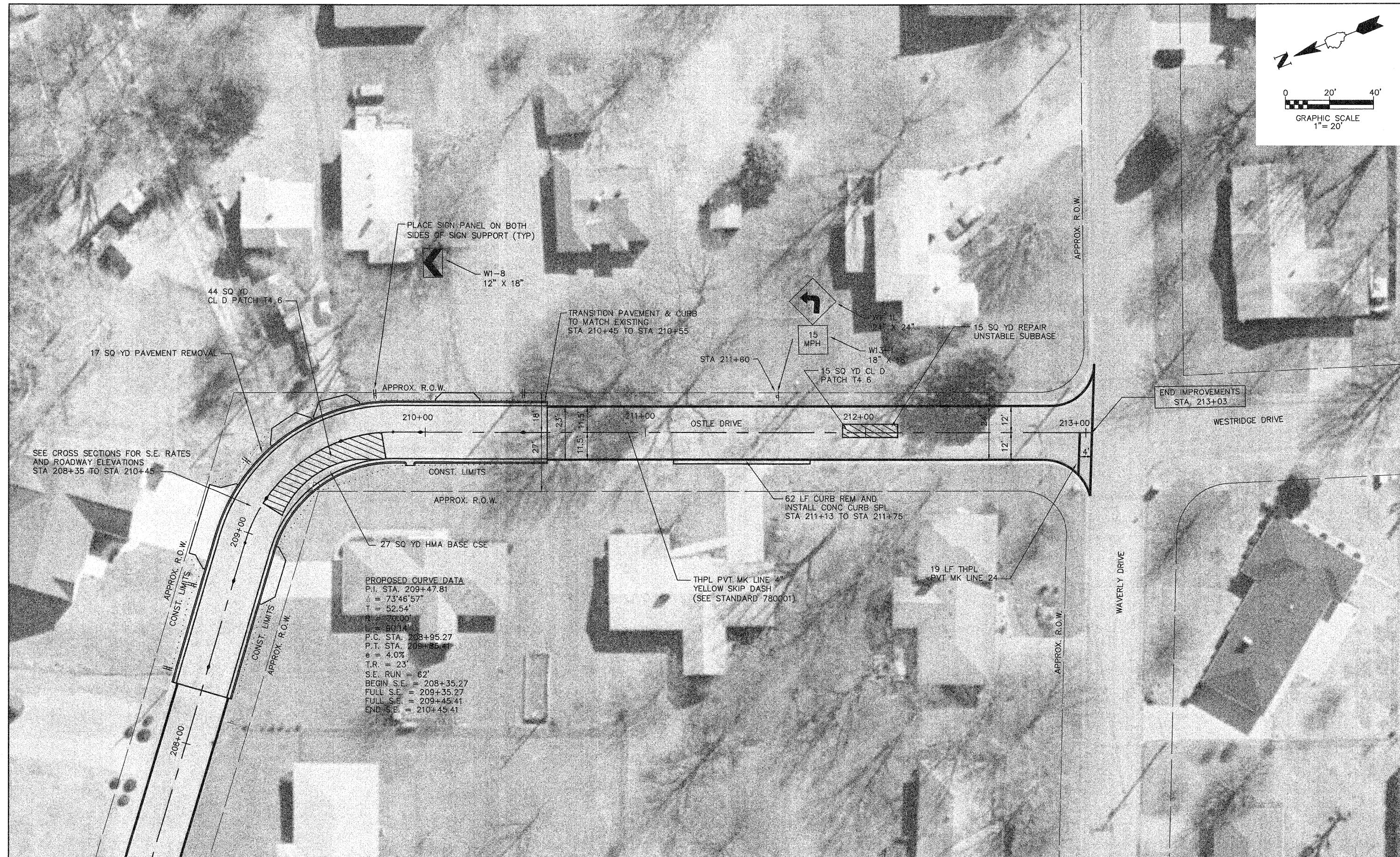
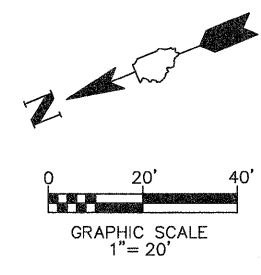
FILE NAME =	USER NAME =	DESIGNED - PAM	REVISED -
		DRAWN - JTH	REVISED -
		CHECKED -	REVISED -
		DATE -	REVISED -

STATE OF ILLINOIS
DEPARTMENT OF TRANSPORTATION

PLAN SHEET

SCALE: 1"=20' SHEET NO. 2 OF 3 SHEETS STA. 205+00 TO STA. 209+50

F.A.U. RTE.	SECTION	COUNTY	TOTAL SHEETS	SHEET NO.
9125	09-00092-00-RS	MADISON	9	6
CONTRACT NO. 97389				
FED. ROAD DIST. NO. ILLINOIS FED. AID PROJECT				



PROPOSED CURVE DATA
 P.I. STA. 209+47.81
 $\Delta = 73^{\circ}46'57''$
 $T = 52.54'$
 $R = 70.00'$
 $L = 80.14'$
 P.C. STA. 208+95.27
 P.T. STA. 209+85.41
 $e = 4.0\%$
 $T.R. = 23'$
 S.E. RUN = 62'
 BEGIN S.E. = 208+35.27
 FULL S.E. = 209+35.27
 FULL S.E. = 209+45.41
 END S.E. = 210+45.41

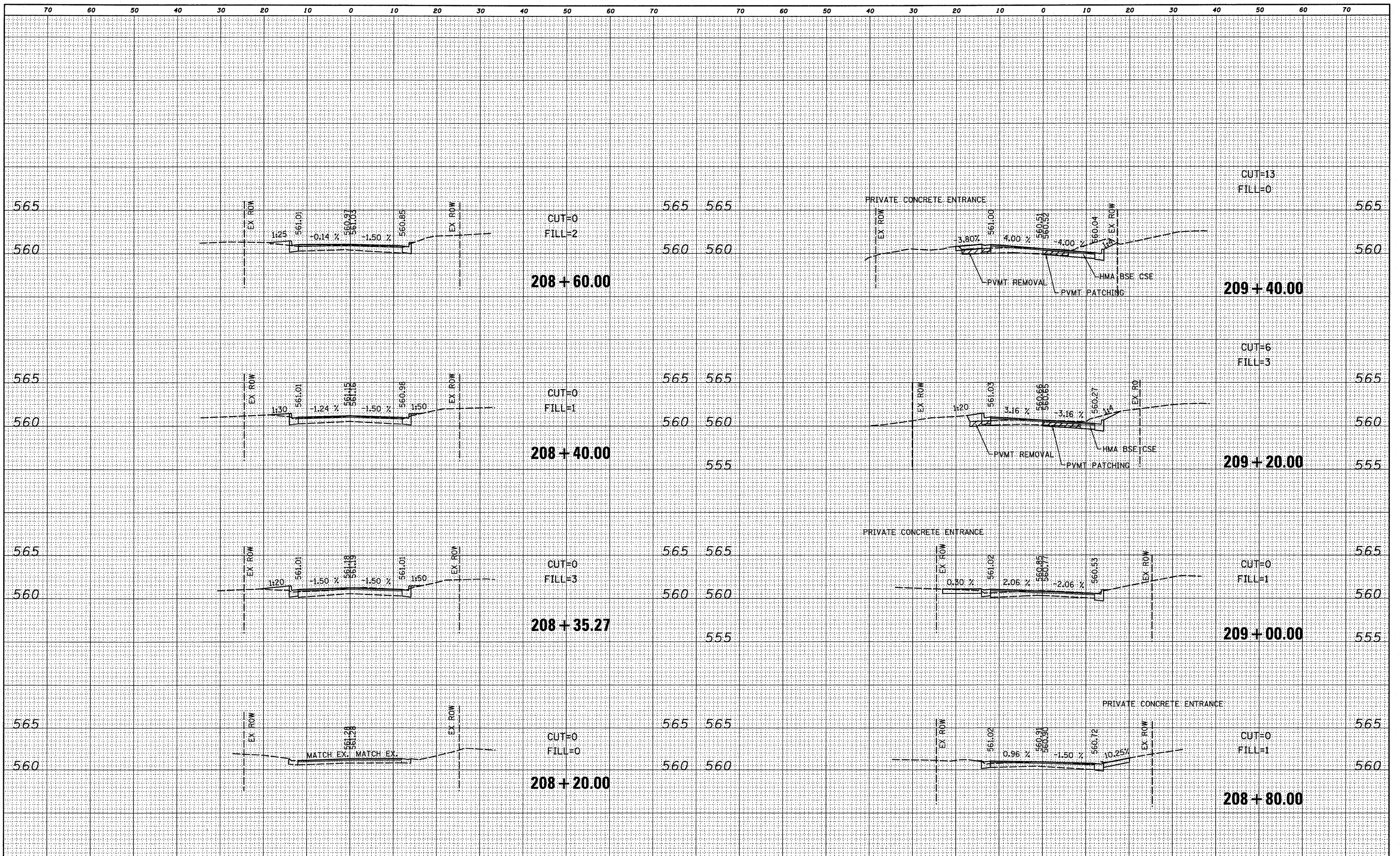
FILE NAME =	USER NAME =	DESIGNED - PAM	REVISED -
		DRAWN - JTH	REVISED -
		CHECKED -	REVISED -
		DATE -	REVISED -

**STATE OF ILLINOIS
 DEPARTMENT OF TRANSPORTATION**

PLAN SHEET

SCALE: 1"=20' SHEET NO. 3 OF 3 SHEETS STA. 209+50 TO STA. 213+03

F.A.U. RTE.	SECTION	COUNTY	TOTAL SHEETS	SHEET NO.
9125	09-00092-00-RS	MADISON	9	7
CONTRACT NO. 97389				
FED. ROAD DIST. NO. ILLINOIS FED. AID PROJECT				



FILE NAME = H:\P\28003\W0-9 - 2008 Resurfacing Program\Mid	USER NAME = randy roStation\28003-xshd.dgn	DESIGNED - PAM	REVISED -	STATE OF ILLINOIS DEPARTMENT OF TRANSPORTATION	CROSS SECTIONS			F.A.U. RTE. 9125	SECTION 09-0092-00-RS	COUNTY MADISON	TOTAL SHEETS 9	SHEET NO. 8	
PLOT SCALE = 1/8" = 10.0000' / IN.		CHECKED -	REVISED -		SCALE:	SHEET NO. 1 OF 2 SHEETS	STA. 208+20.00 TO STA. 209+40.00.	CONTRACT NO. 97389		ILLINOIS FED. AID PROJECT			
PLOT DATE = 6/8/2009		DATE -	REVISED -										

