

RT. STA. 31+89  
EXISTING SIDEWALK RAMP AND  
DETECTABLE WARNINGS TO  
REMAIN

RT. STA. 32+12 TO STA. 32+75  
COMBINATION CONCRETE CURB AND GUTTER  
REMOVAL  
63 FT.  
COMBINATION CONCRETE CURB AND GUTTER,  
TYPE B-6.18  
63 FT.

RT. STA. 33+23 TO STA. 33+34  
SIDEWALK REMOVAL 57 SQ. FT.  
P.C.C. SIDEWALK, 4" 57 SQ. FT.  
DETECTABLE WARNINGS  
8 SQ. FT.

**CURVE 2**  
R = 3500.00'  
L = 222.97'  
CB = N 60°35'54"E  
CH = 222.94'  
Δ = 3°39'00"

LT. STA. 32+77 TO STA. 32+85  
COMBINATION CONCRETE CURB AND GUTTER  
REMOVAL  
8 FT.  
COMBINATION CONCRETE CURB AND GUTTER,  
TYPE B-6.18  
8 FT.

LT. STA. 33+11 TO STA. 33+16  
SIDEWALK REMOVAL  
20 SQ. FT.  
P.C.C. SIDEWALK, 4"  
20 SQ. FT.

LT. STA. 33+72  
EXISTING SIDEWALK RAMP AND  
DETECTABLE WARNINGS TO  
REMAIN

RT. STA. 33+84 TO STA. 33+98  
SIDEWALK REMOVAL  
60 SQ. FT.  
P.C.C. SIDEWALK, 4"  
60 SQ. FT.  
DETECTABLE WARNINGS  
8 SQ. FT.

HOT-MIX ASPHALT SURFACE REMOVAL - BUTT JOINT  
55 SQ. YDS.

END HOT-MIX ASPHALT RESURFACING  
MATCH EXIST. SURFACE ELEV.  
TEMPORARY RAMP  
16.7 SQ. YDS.

RT. STA. 34+00 TO STA. 34+13  
SIDEWALK REMOVAL  
53 SQ. FT.  
P.C.C. SIDEWALK, 4"  
53 SQ. FT.

RT. STA. 34+05,  
VALVE VAULT TO BE ADJUSTED  
1 EACH

RT. STA. 34+40 TO STA. 34+51  
COMBINATION CONCRETE CURB AND GUTTER  
REMOVAL  
11 FT.  
COMBINATION CONCRETE CURB AND GUTTER,  
TYPE B-6.18  
11 FT.

RT. STA. 34+73 TO STA. 34+92  
COMBINATION CONCRETE CURB AND GUTTER  
REMOVAL  
19 FT.  
COMBINATION CONCRETE CURB AND GUTTER,  
TYPE B-6.18  
19 FT.

RT. STA. 34+95 TO STA. 35+01  
SIDEWALK REMOVAL  
22 SQ. FT.  
P.C.C. SIDEWALK, 4"  
22 SQ. FT.

LT. STA. 34+17 TO STA. 34+26  
SIDEWALK REMOVAL  
30 SQ. FT.  
P.C.C. SIDEWALK, 4"  
30 SQ. FT.  
DETECTABLE WARNINGS  
8 SQ. FT.

LT. STA. 34+43 TO STA. 34+60  
COMBINATION CONCRETE CURB AND GUTTER  
REMOVAL  
17 FT.  
COMBINATION CONCRETE CURB AND GUTTER,  
TYPE B-6.18  
17 FT.

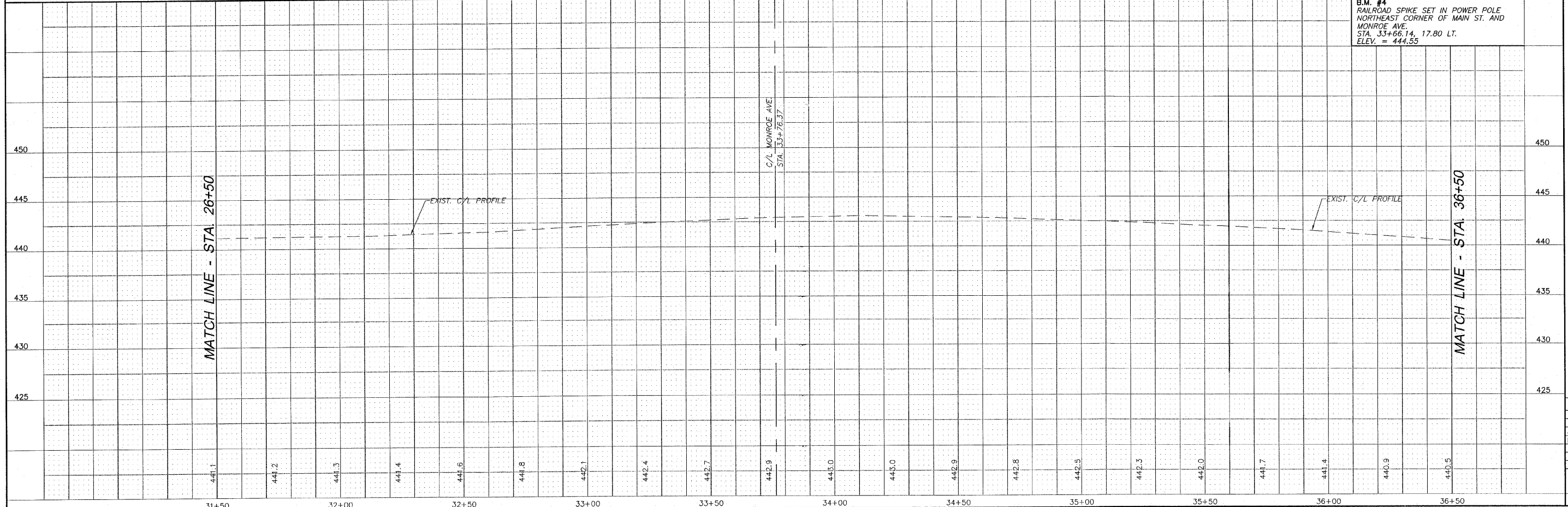
LT. STA. 36+39 TO STA. 36+50  
COMBINATION CONCRETE CURB AND GUTTER  
REMOVAL  
11 FT.  
COMBINATION CONCRETE CURB AND GUTTER,  
TYPE B-6.18  
11 FT.

RT. STA. 36+32 TO STA. 36+42  
COMBINATION CONCRETE CURB AND GUTTER  
REMOVAL  
10 FT.  
COMBINATION CONCRETE CURB AND GUTTER,  
TYPE B-6.18  
10 FT.

RT. STA. 36+03 TO STA. 36+13  
SIDEWALK REMOVAL  
38 SQ. FT.  
P.C.C. SIDEWALK, 4"  
38 SQ. FT.

RT. STA. 35+45 TO STA. 35+25  
COMBINATION CONCRETE CURB AND GUTTER  
REMOVAL  
80' FT.  
COMBINATION CONCRETE CURB AND GUTTER,  
TYPE B-6.18  
80 FT.

B.M. #4  
RAILROAD SPIKE SET IN POWER POLE  
NORTHEAST CORNER OF MAIN ST. AND  
MONROE AVE.  
STA. 33+66.14, 17.80 LT.  
ELEV. = 444.55



EAST ALTON, ILLINOIS - MAIN STREET IMPROVEMENTS  
 SECTION 09-00045-01-RS  
 FAU ROUTE 8967  
 PLAN AND PROFILE

**SMS ENGINEERS**  
 Sheppard, Morgan & Schwaab, Inc.  
 CONSULTING ENGINEERS AND LAND SURVEYORS  
 215 Market Street, P.O. Box E, Alton, IL 62002 618/462-9755 E-mail: mail@smsengineers.com  
 10 Central Industrial Drive, Suite 3, Granite City, IL 62040 618/987-9700 E-mail: mail@smsengineers.com  
 DESIGN FIRM # 184-C00992

E ALTON MAIN ST PP4.DWG
REF. BK. PG.
JOB NO. 227824.1
DSN. BY: LDA
DWN. BY: CDP
CHK. BY: DEG
DATE: MAY, 2009
HORIZ: 1"=20'
SCALE: VERT: 1"=5'
SHEET 7 OF 9