

FOR UTILITY LOCATION PURPOSES, THIS PROJECT IS LOCATED IN THE S.W. QUARTER OF SECTION 16, TOWNSHIP 5 NORTH, RANGE 9 WEST OF THE THIRD PRINCIPAL MERIDIAN.

UTILITY INFORMATION CAN BE OBTAINED BY CALLING J.U.L.I.E. AT (800) 892-0123

THE FOLLOWING UTILITY COMPANIES HAVE FACILITIES WITHIN THE LIMITS OF THIS PROJECT:

- | | |
|---|---|
| AMEREN IP
2600 N. CENTER STREET
MARYVILLE, ILLINOIS 62062
(618) 346-1273 (GAS) | AMERITECH
203 GOETHE
COLLINSVILLE, ILLINOIS 62234
(618) 346-6400 |
| AMEREN UE
700 OAKWOOD AVENUE
ALTON, ILLINOIS 62002
(618) 463-4051 (ELECTRIC) | VILLAGE OF EAST ALTON STREET DEPT.
119 WEST MAIN
EAST ALTON, ILLINOIS 62024
(618) 259-7522 |
| CHARTER COMMUNICATIONS
508 NIAGRA AVENUE
EAST ALTON, ILLINOIS 62024
(618) 251-2660 | VILLAGE OF EAST ALTON WATER DEPT.
119 WEST MAIN
EAST ALTON, ILLINOIS 62024
(618) 259-4646 |
| OLIN CORPORATION
427 N. SHAMROCK
EAST ALTON, ILLINOIS 62024
(618) 258-2000 (GAS & WATER) | VILLAGE OF EAST ALTON SEWER DEPT.
119 WEST MAIN
EAST ALTON, ILLINOIS 62024
(618) 254-2728 |

STATE OF ILLINOIS

DEPARTMENT OF TRANSPORTATION

DIVISION OF HIGHWAYS

FEDERAL AID HIGHWAY

ARRA PROGRAM

MAIN STREET IMPROVEMENTS
SECTION 09-00045-01-RS
FAU ROUTE 8967 (MAIN STREET)
PROJECT ARA-5011 (271)
VILLAGE OF EAST ALTON
MADISON COUNTY
JOB C-98-350-09

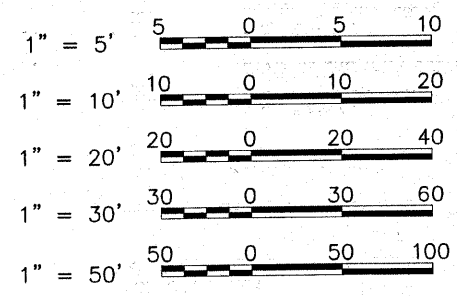
INDEX TO SHEETS

1. COVER SHEET
2. GENERAL NOTES, LEGEND, PATCHING SCHEDULE, AND SUMMARY OF QUANTITIES
3. TYPICAL SECTIONS AND CONSTRUCTION DETAILS
- 4.-8. PLAN AND PROFILE SHEETS
9. PAVEMENT MARKING

HIGHWAY STANDARDS

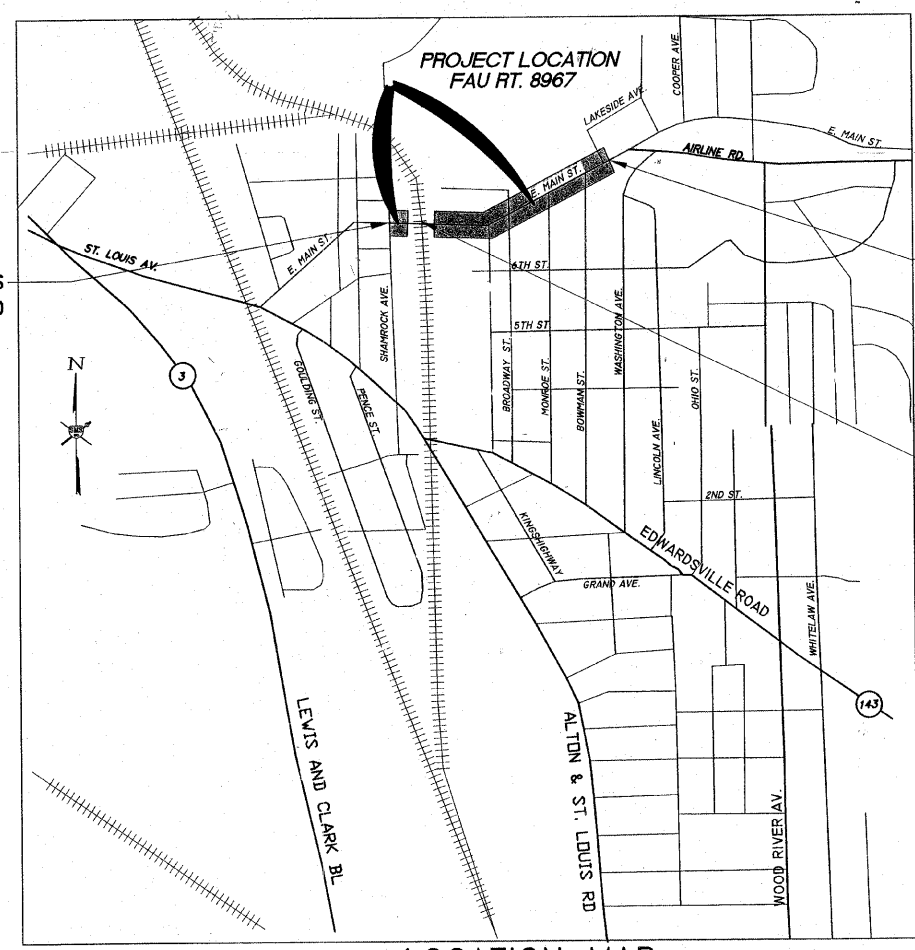
424001-05	701801-04
442201-03	701901-01
606001-04	780001-02
701301-03	781001-03
701501-05	

SCALES



FULL SIZE PLANS HAVE BEEN PREPARED USING STANDARD ENGINEERING SCALES. REDUCED SIZED PLANS WILL NOT CONFORM TO STANDARD SCALES. IN MAKING MEASUREMENTS ON REDUCED PLANS THE ABOVE SCALES MAY BE USED.

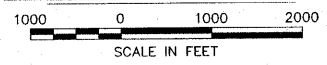
PROJECT BEGINS
STA. 19+00



PROJECT ENDS
STA. 38+86

OMISSION
STA. 22+34.46 TO STA. 22+43.13

LOCATION MAP

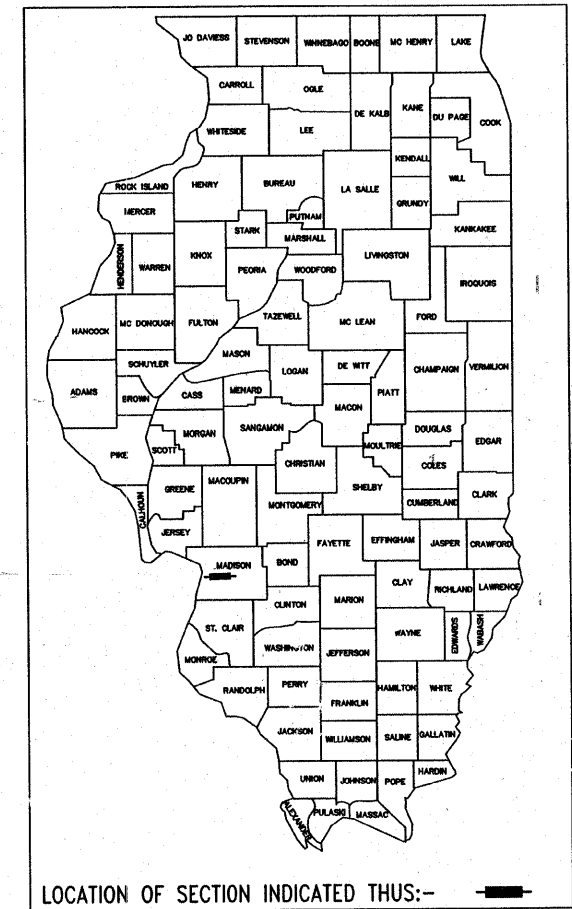


LENGTH OF PROJECT = 1,986 FEET = 0.376 MILES
- OMISSION = 8.67 FEET = 0.002 MILES
NET LENGTH OF PROJECT = 1,977.33 FEET = 0.374 MILES

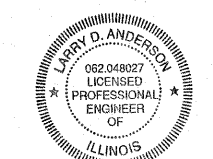
2010 ADT = 10,250
% TRUCKS = 10%
FUNCTIONAL CLASSIFICATION: MINOR ARTERIAL
DESIGN SPEED = 30 M.P.H.
CONTRACT NO. 97390

SMS ENGINEERS Sheppard Morgan & Schwaab, Inc.
CONSULTING ENGINEERS & LAND SURVEYORS
215 Market Street
Alton, Illinois 62002
P.O. Box E
618/462-9755

10 Central Industrial Dr
Northgate Center
Granite City, IL 62040
618/877-8700



APPROVED	<i>July 13</i>	20	09
	<i>Fred Bink</i>		
	LOCAL AGENCY REPRESENTATIVE		
PASSED	<i>7/15</i>	20	09
	<i>[Signature]</i>		
	DISTRICT 8 ENGINEER OF LOCAL ROADS & STREETS		
APPROVED	<i>7/15</i>	20	09
	<i>Mary C. Lamie</i>		
	MARY C. LAMIE, P.E. DEPUTY DIRECTOR OF HIGHWAYS REGION FIVE ENGINEER		
	STATE OF ILLINOIS DEPARTMENT OF TRANSPORTATION		



Larry D. Anderson

DATE SIGNED *7/08/09*
EXPIRATION DATE *11/30/09*

PAVEMENT PATCHING SCHEDULE

Table with columns: LOCATION STA., LENGTH FT., WIDTH FT., TYPE I SQ. YD., TYPE II SQ. YD., TYPE III SQ. YD., TYPE IV SQ. YD., TYPE I SQ. YD., TYPE II SQ. YD., TYPE III SQ. YD.

SUMMARY OF QUANTITIES

Table with columns: CODE NO., ITEM, UNIT, TOTAL QUANTITY. Includes items like RAILROAD PROTECTIVE LIABILITY INSURANCE, BITUMINOUS MATERIALS, etc.

GENERAL LEGEND

Legend symbols and descriptions for centerline, right-of-way, temporary easement, and various existing/constructed features.

STRIP REFLECTIVE CRACK CONTROL TREATMENT SCHEDULE

Table with columns: LOCATION STA., LENGTH FT. Lists treatment segments for various stationing ranges.

COMMITMENTS

NONE

ABBREVIATIONS

Table listing abbreviations such as T.C., E.P., F.L., RDMH, PRCF, F. & G., D.L., C.L., SS1, SSIWQ, PC1, T.B., C.L.S.M., CUT, FILL.

MIX DESIGNS

Table detailing mix designs for surface, level binder, and patching, including AC/PG, RAP, and design air voids.

GENERAL NOTES

- 1. THIS PROJECT SHALL BE CONSTRUCTED ACCORDING TO THE STANDARD SPECIFICATIONS FOR ROAD AND BRIDGE CONSTRUCTION... 2. INFORMATION ON THE PLANS REGARDING UTILITIES IS TAKEN FROM THE BEST AVAILABLE RECORDS... 3. THE CONTRACTOR SHALL USE ALL DUE PRECAUTION NOT TO DAMAGE OR DISTURB UTILITIES... 4. ALL ELEVATIONS REFER TO NATIONAL GEODETIC SURVEY (N.G.S.) DATUM. 5. THE CONTRACTOR, AT HIS EXPENSE, SHALL DISPOSE OF ALL EXCESS MATERIALS... 6. PLAN QUANTITIES FOR HOT-MIX ASPHALT ITEMS WERE CALCULATED BASED ON USING 112 LBS. / SQ. YD. / IN.

SURVEY CONTROL POINTS

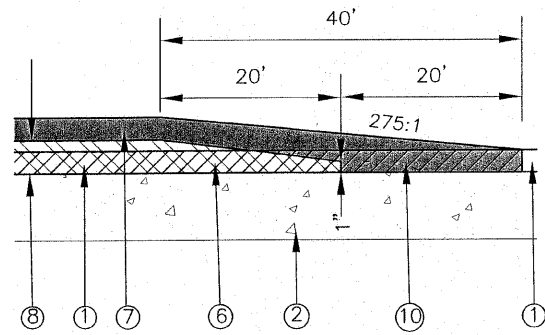
Table with columns: CONTROL POINT, LOCATION, ELEVATION, DESCRIPTION. Lists vertical and horizontal control points.

* ELEVATIONS SHOULD BE CHECKED FROM A BENCHMARK

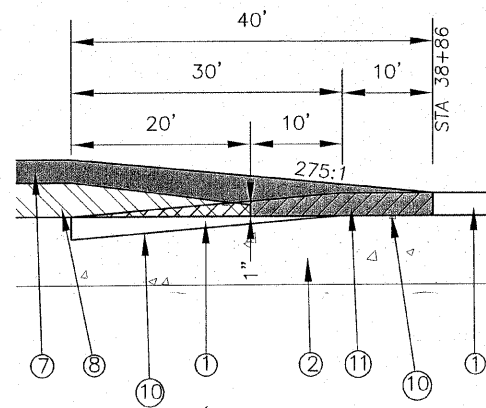
Vertical banner for SMS ENGINEERS, Sheppard, Morgan & Schwab, Inc. CONSULTING ENGINEERS AND LAND SURVEYORS.

Vertical text on the right edge: EAST ALTON, ILLINOIS - MAIN STREET IMPROVEMENTS SECTION 09-00045-01-RS FAU ROUTE 8967 GENERAL NOTES, LEGEND, PATCHING SCHEDULE, AND SUMMARY OF QUANTITIES

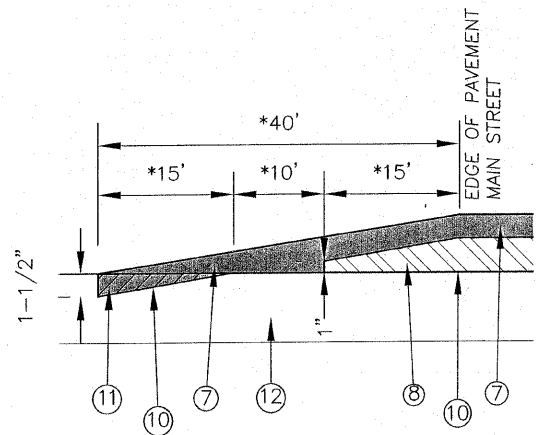
Bottom right corner notes: EAST ALTON GENERAL NOTES.DWG, JOB NO. 2274241, DSN. BY: LA, DWN. BY: CAD, CHK. BY: LA, DATE: MAY 2009, SCALE: NONE, SHEET 7 OF 9



HOT-MIX ASPHALT TRANSITION DETAIL
TO BE USED: MAIN STREET STA. 19+00
SHAMROCK AVENUE

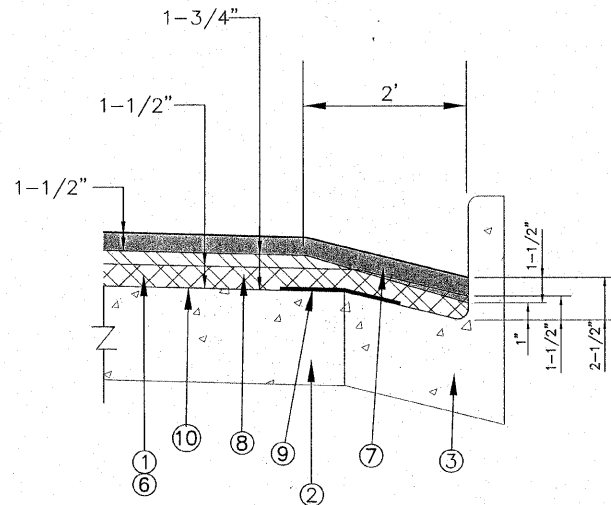


BUTT JOINT DETAIL
TO BE USED: MAIN STREET STA 38+86

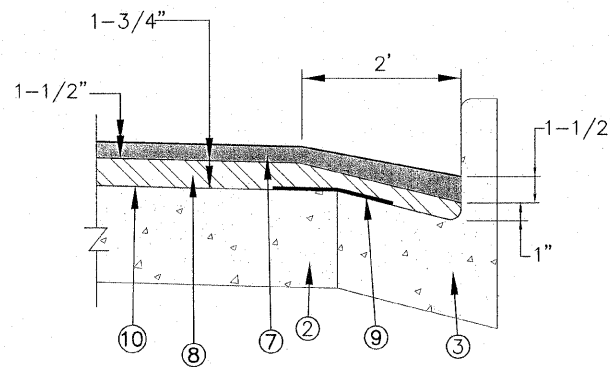


BUTT JOINT DETAIL
TO BE USED: BROADWAY AVENUE
MONROE AVENUE
BOWMAN AVENUE

* DISTANCE MEASURED ALONG C/L OF SIDE STREET



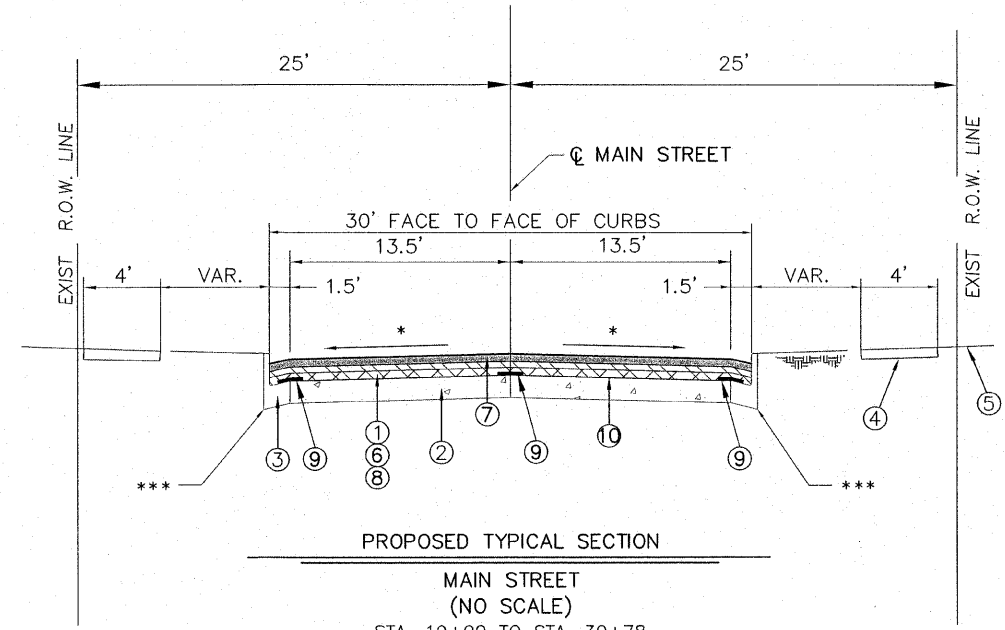
DETAIL A



DETAIL B

LEGEND

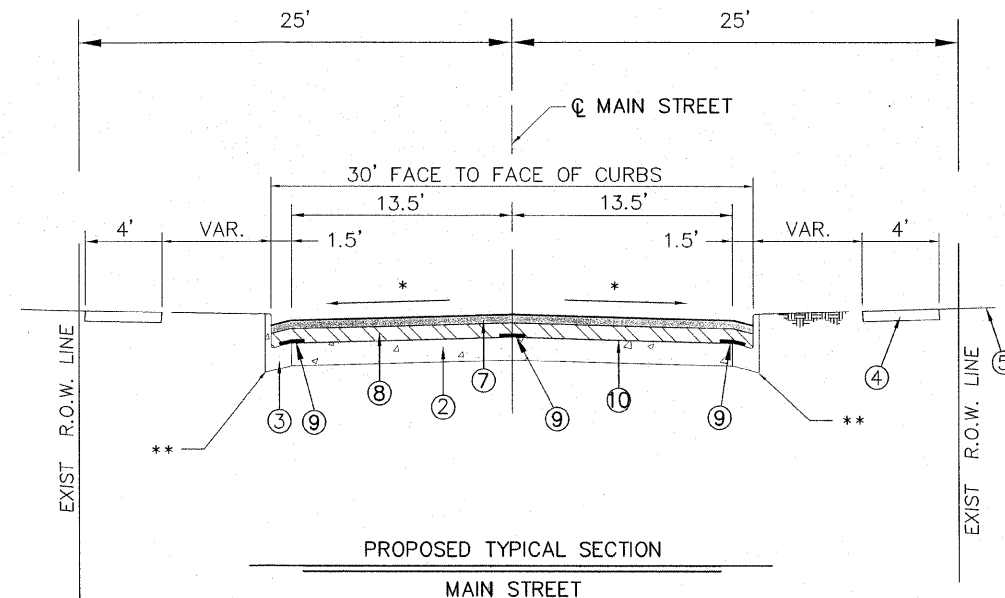
- ① EXISTING HOT-MIX ASPHALT SURFACE, 1-1/2"
- ② EXISTING CONCRETE PAVEMENT, 7-1/2"
- ③ EXISTING COMBINATION CONCRETE CURB AND GUTTER, TYPE B-6.18
- ④ EXISTING PCC SIDEWALK 4'
- ⑤ EXISTING GROUND LINE
- ⑥ PROPOSED HOT-MIX ASPHALT SURFACE REMOVAL, 1-1/2"
- ⑦ PROPOSED HOT-MIX ASPHALT SURFACE COURSE, MIX"D", N70, 1-1/2"
- ⑧ PROPOSED LEVELING BINDER (MACHINE METHOD), N70, 1-3/4"
- ⑨ PROPOSED STRIP REFLECTIVE CRACK CONTROL
- ⑩ PROPOSED BITUMINOUS MATERIALS (PRIME COAT) & AGGREGATE (PRIME COAT)
- ⑪ PROPOSED HOT-MIX ASPHALT SURFACE REMOVAL- BUTT JOINT
- ⑫ EXISTING OIL AND CHIP SURFACE ON AN AGGREGATE BASE



PROPOSED TYPICAL SECTION

MAIN STREET
(NO SCALE)
STA. 19+00 TO STA. 30+78
STA. 38+46 TO STA. 38+86

* MATCH EXISTING
*** SEE DETAIL A



PROPOSED TYPICAL SECTION

MAIN STREET
(NO SCALE)
STA. 30+78 TO STA. 38+46

* MATCH EXISTING
** SEE DETAIL B

REVISIONS

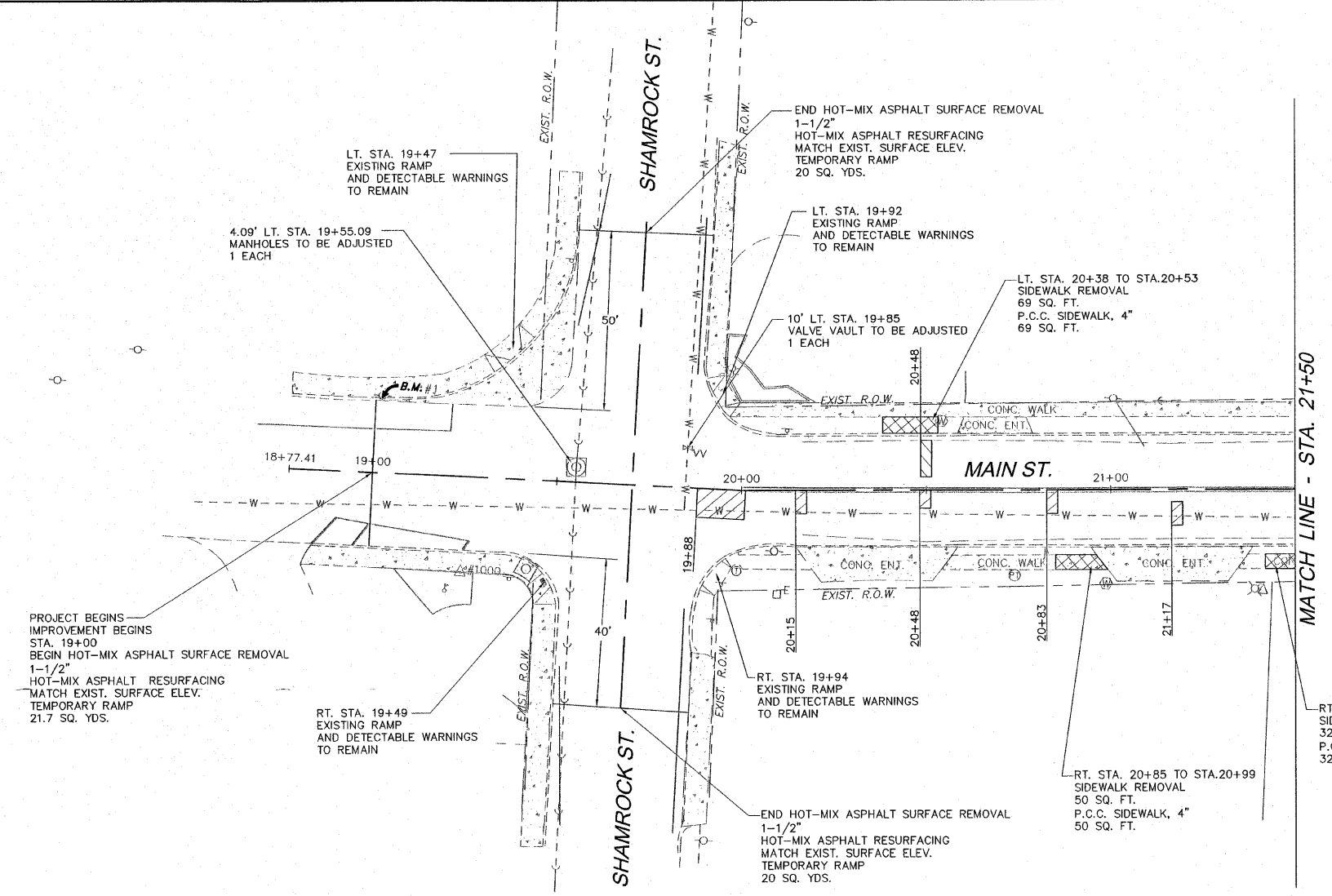
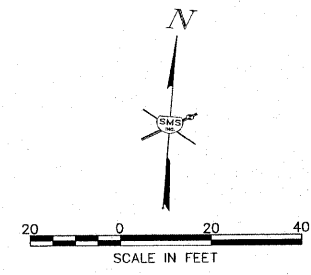
SMS ENGINEERS
Sheppard, Morgan & Schwaab, Inc.
CONSULTING ENGINEERS AND LAND SURVEYORS
115 Market Street, P.O. Box E, Alton, IL 62002 • 618/622-9755 • Email: mail@smsengineers.com
10 Central Industrial Drive, Granite City, IL 62040 • 618/877-3700 • Email: mail@smsengineers.com

EAST ALTON, ILLINOIS - MAIN STREET IMPROVEMENTS
SECTION 09-00045-01-RS
FAU ROUTE 8967
TYPICAL SECTIONS AND CONSTRUCTION DETAILS

E ALTON CONST DETAILS.DWG
REF. BK. PG.
JOB NO. 227624.1
DSN. BY: LA
DWN. BY: CAD
CHK. BY: LA
DATE: MAY, 2009

SCALE: NONE

SHEET 3 OF 9



PROJECT BEGINS
IMPROVEMENT BEGINS
STA. 19+00
BEGIN HOT-MIX ASPHALT SURFACE REMOVAL
1-1/2"
HOT-MIX ASPHALT RESURFACING
MATCH EXIST. SURFACE ELEV.
TEMPORARY RAMP
21.7 SQ. YDS.

RT. STA. 19+49
EXISTING RAMP
AND DETECTABLE WARNINGS
TO REMAIN

4.09' LT. STA. 19+55.09
MANHOLES TO BE ADJUSTED
1 EACH

LT. STA. 19+47
EXISTING RAMP
AND DETECTABLE WARNINGS
TO REMAIN

END HOT-MIX ASPHALT SURFACE REMOVAL
1-1/2"
HOT-MIX ASPHALT RESURFACING
MATCH EXIST. SURFACE ELEV.
TEMPORARY RAMP
20 SQ. YDS.

RT. STA. 19+94
EXISTING RAMP
AND DETECTABLE WARNINGS
TO REMAIN

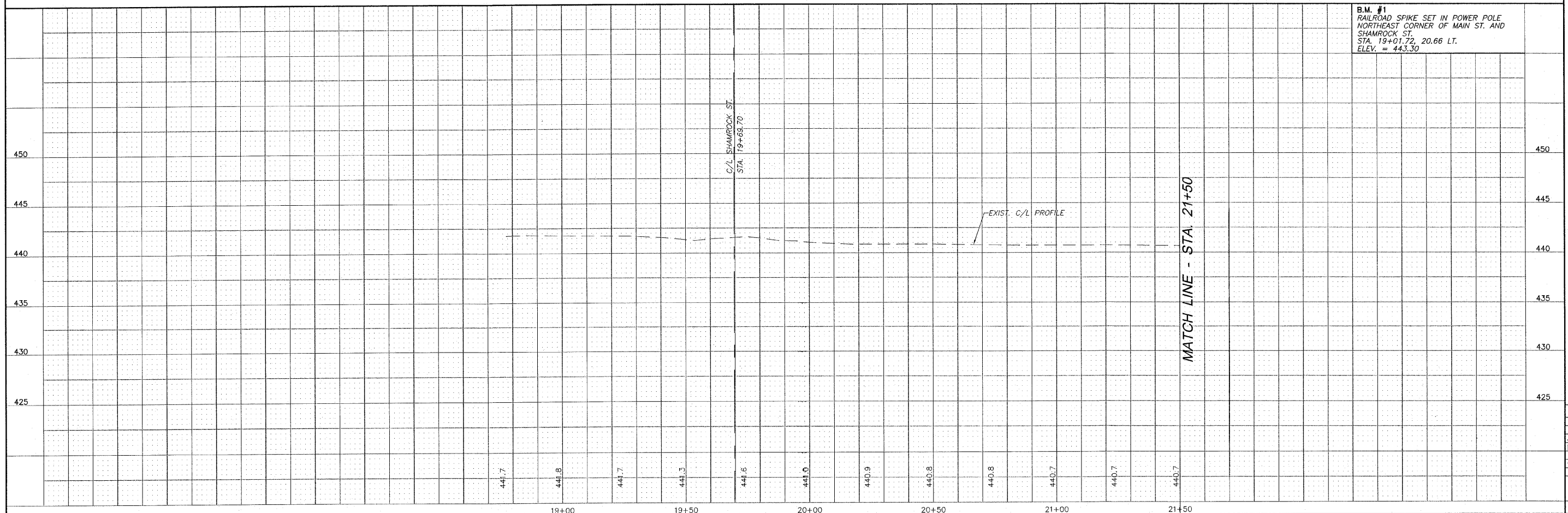
LT. STA. 19+92
EXISTING RAMP
AND DETECTABLE WARNINGS
TO REMAIN

10' LT. STA. 19+85
VALVE VAULT TO BE ADJUSTED
1 EACH

LT. STA. 20+38 TO STA.20+53
SIDEWALK REMOVAL
69 SQ. FT.
P.C.C. SIDEWALK, 4"
69 SQ. FT.

RT. STA. 20+85 TO STA.20+99
SIDEWALK REMOVAL
50 SQ. FT.
P.C.C. SIDEWALK, 4"
50 SQ. FT.

RT. STA. 21+42 TO STA.21+50
SIDEWALK REMOVAL
32 SQ. FT.
P.C.C. SIDEWALK, 4"
32 SQ. FT.

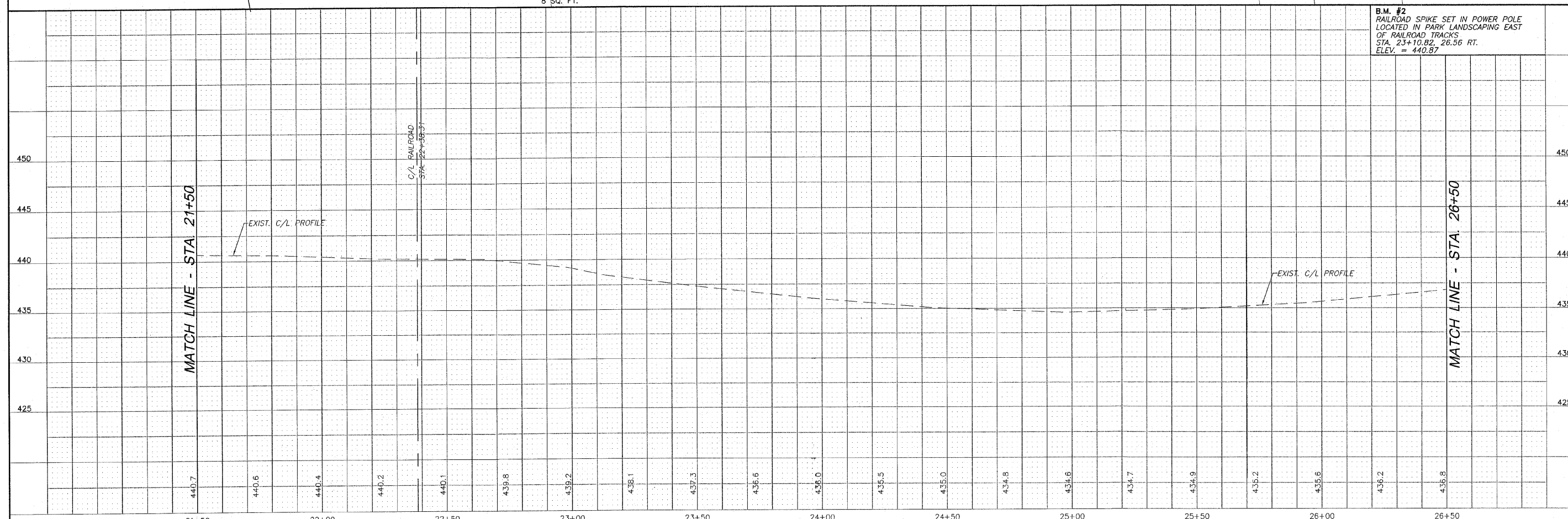
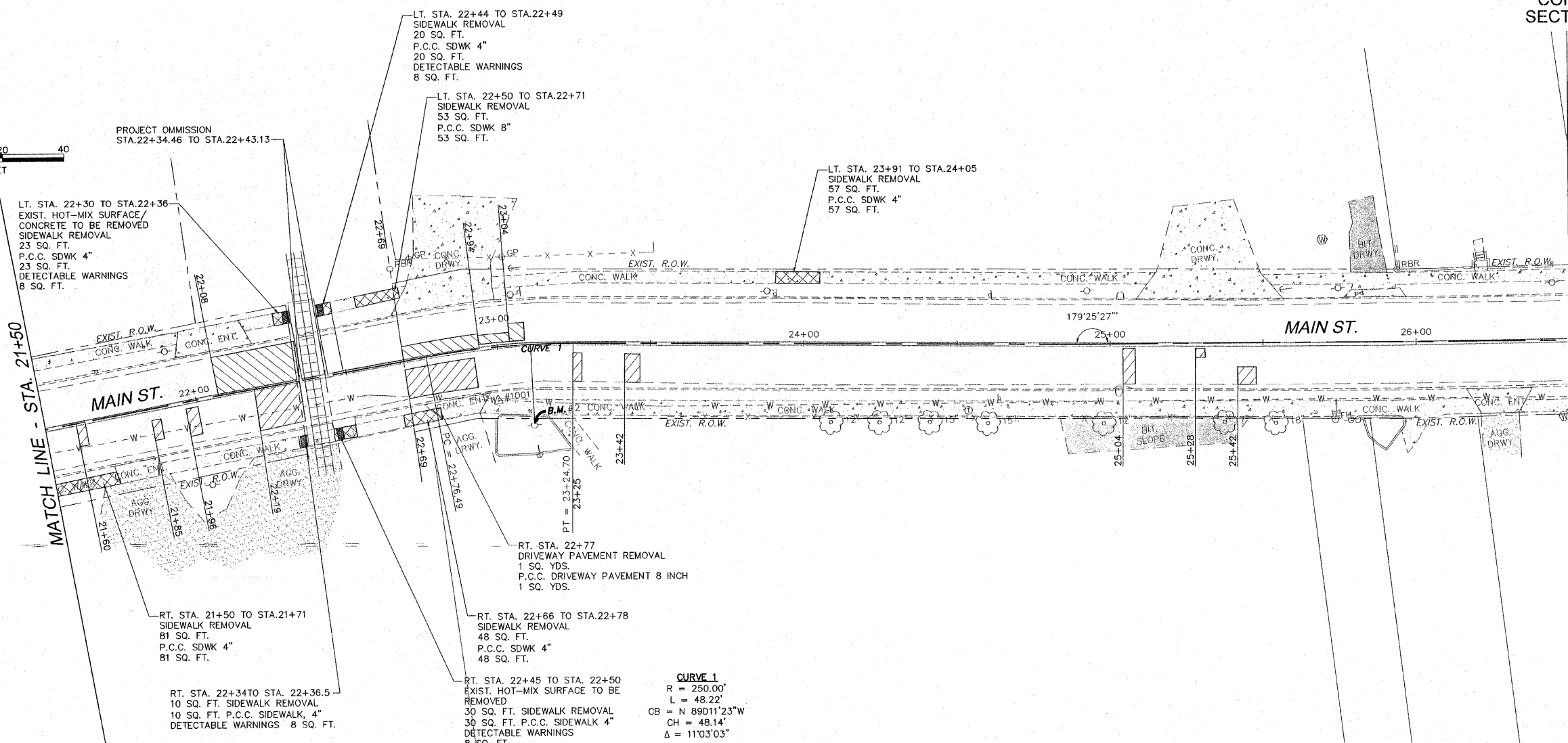
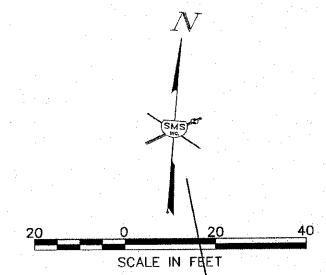


B.M. #1
RAILROAD SPIKE SET IN POWER POLE
NORTHEAST CORNER OF MAIN ST. AND
SHAMROCK ST.
STA. 19+01.72, 20.66 LT.
ELEV. = 443.30

EAST ALTON, ILLINOIS - MAIN STREET IMPROVEMENTS
SECTION 09-0045-01-RS
FAU ROUTE 8967
PLAN AND PROFILE

SMS ENGINEERS
Sheppard, Morgan & Schwaab, Inc.
CONSULTING ENGINEERS AND LAND SURVEYORS
215 Market Street, P.O. Box E, Alton, IL 62002, 618-462-9755 E-mail: mail@smsengineers.com
10 Central Industrial Drive, Suite 3, Geneva, IL 60134, 618-777-5700 E-mail: mail@smsengineers.com
DESIGN FIRM # 184-000992

E ALTON MAIN ST PP1.DWG	PG.
REF. BK.	227524.1
JOB NO.	227524.1
DSN. BY:	LDA
DWN. BY:	COP
CHK. BY:	DEC
DATE:	MAY 2009
SCALE:	HORIZ: 1"=20' VERT: 1"=5'
SHEET	4 OF 9



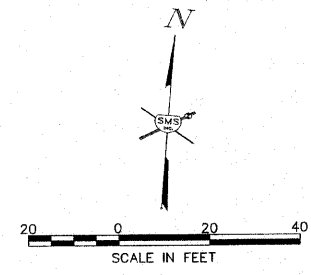
B.M. #2
RAILROAD SPIKE SET IN POWER POLE
LOCATED IN PARK LANDSCAPING EAST
OF RAILROAD TRACKS
STA. 23+10.82, 26.56 RT.
ELEV. = 440.87

REVISIONS

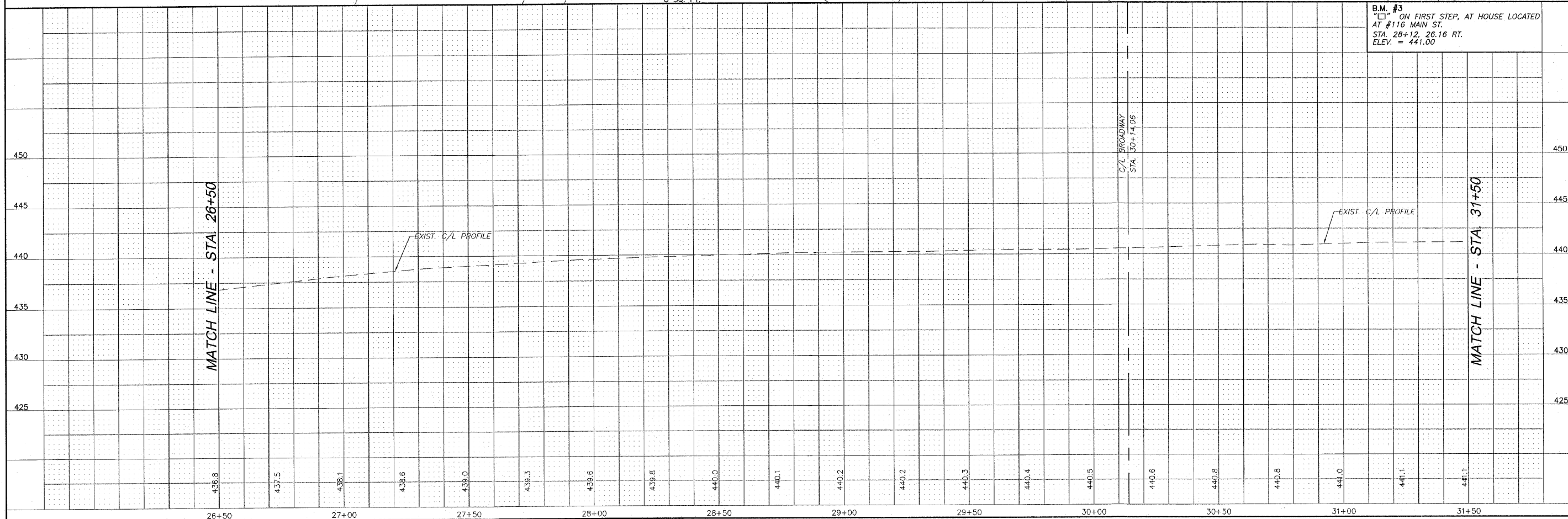
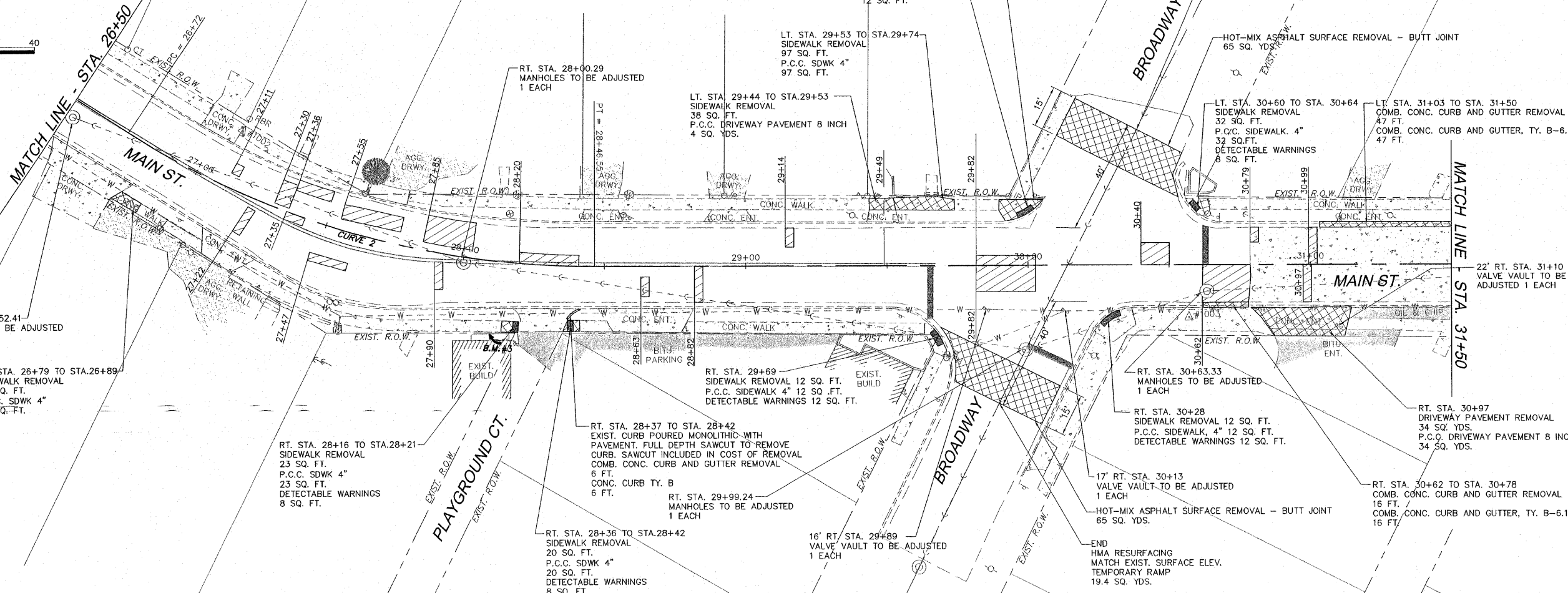
SMS ENGINEERS
Sheppard, Morgan & Schwaab, Inc.
CONSULTING ENGINEERS AND LAND SURVEYORS
125 Market Street, P.O. Box E, Alton, IL 62002 618/462-5755 E-mail: sms@smsengineers.com
110 Central National Drive, Suite 3, Central National, IL 62906 618/877-8700 E-mail: mls@smsengineers.com
DESIGN FIRM # 184-000992

EAST ALTON, ILLINOIS - MAIN STREET IMPROVEMENTS
SECTION 09-00045-01-RS
FAU ROUTE 8967
PLAN AND PROFILE

E ALTON MAIN ST PP2.DWG	PG.
REF. BK.	227624.1
JOB NO.	227624.1
DSN. BY:	LDA
DWN. BY:	CDP
CHK. BY:	DEG
DATE:	MAY, 2009
HORIZ:	1"=20'
VERT:	1"=5'
SHEET	5 OF 9



CURVE 2
R = 300.00'
L = 174.55'
CB = N 79°05'30"E
CH = 172.10'
Δ = 33°20'12"



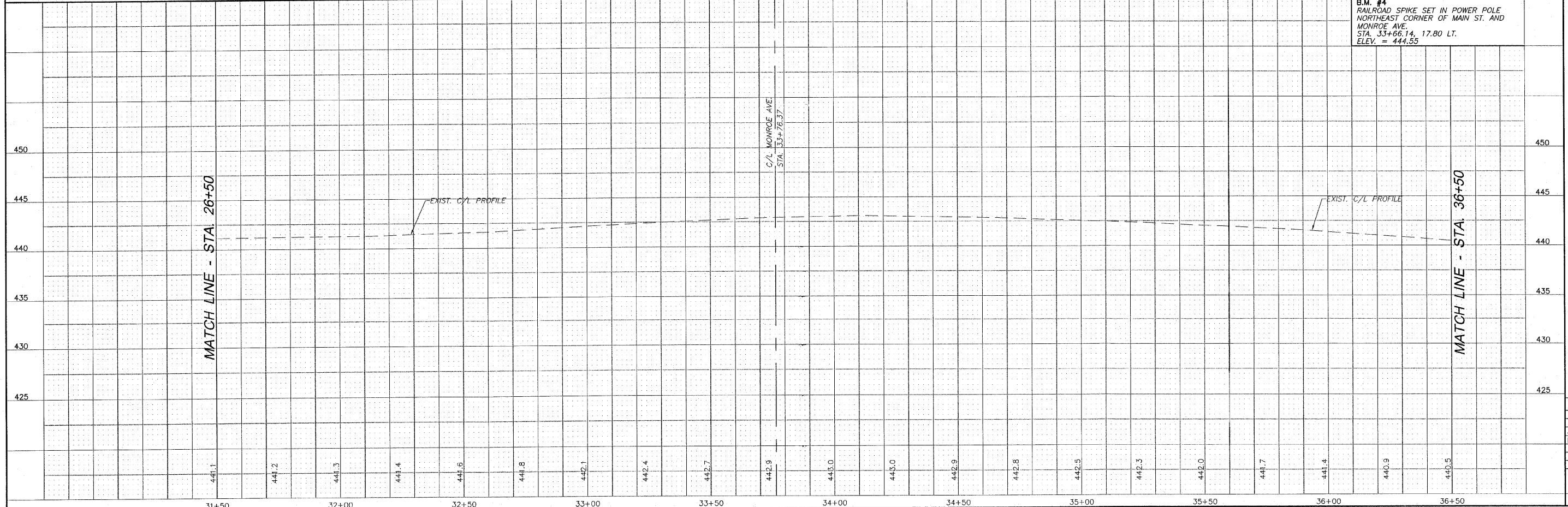
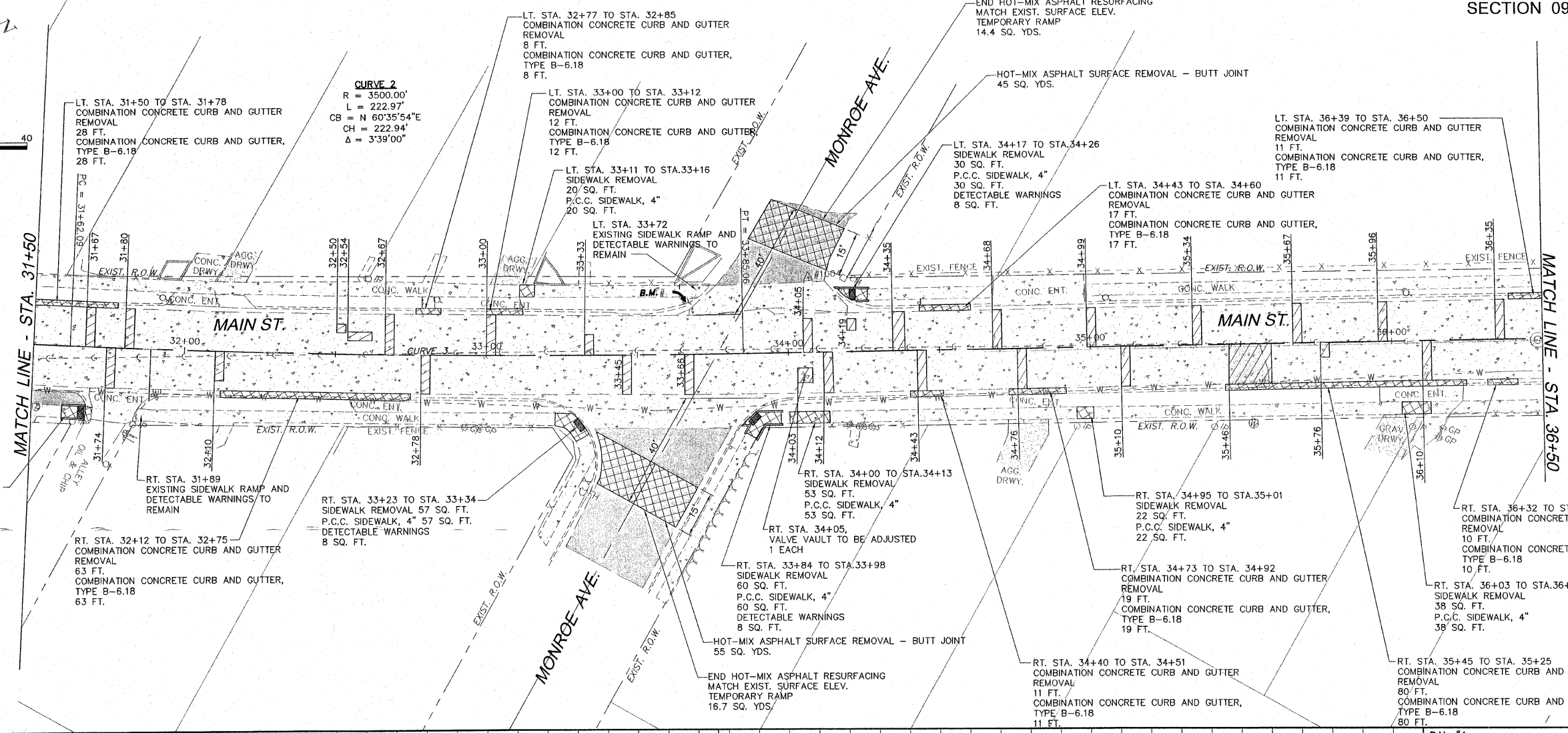
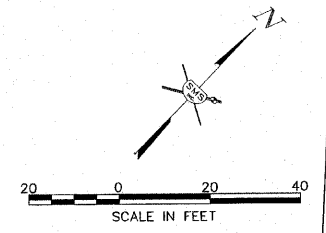
B.M. #3
ON FIRST STEP, AT HOUSE LOCATED
AT #116 MAIN ST.
STA. 28+12, 26.16 RT.
ELEV. = 441.00

REVISIONS

SMS ENGINEERS
Sheppard, Morgan & Schwaab, Inc.
CONSULTING ENGINEERS AND LAND SURVEYORS
215 Market Street, P.O. Box E, Alton, IL 62002 618/462-9755 E-mail: mail@smsengineers.com
10 Central Industrial Drive, Suite 3, Granite City, IL 62040 618/877-5700 E-mail: mail@smsengineers.com
DESIGN FIRM # 184-000992

EAST ALTON, ILLINOIS - MAIN STREET IMPROVEMENTS
SECTION 09-00045-01-RS
FAU ROUTE 8967
PLAN AND PROFILE

E ALTON MAIN ST PP3.DWG	
REF. BK.	PG.
JOB NO.	227624.1
DSN. BY:	LDA
DWN. BY:	CDP
CHK. BY:	DEG
DATE:	MAY, 2009
SCALE:	HORIZ: 1"=20' VERT: 1"=5'
SHEET	6 OF 9

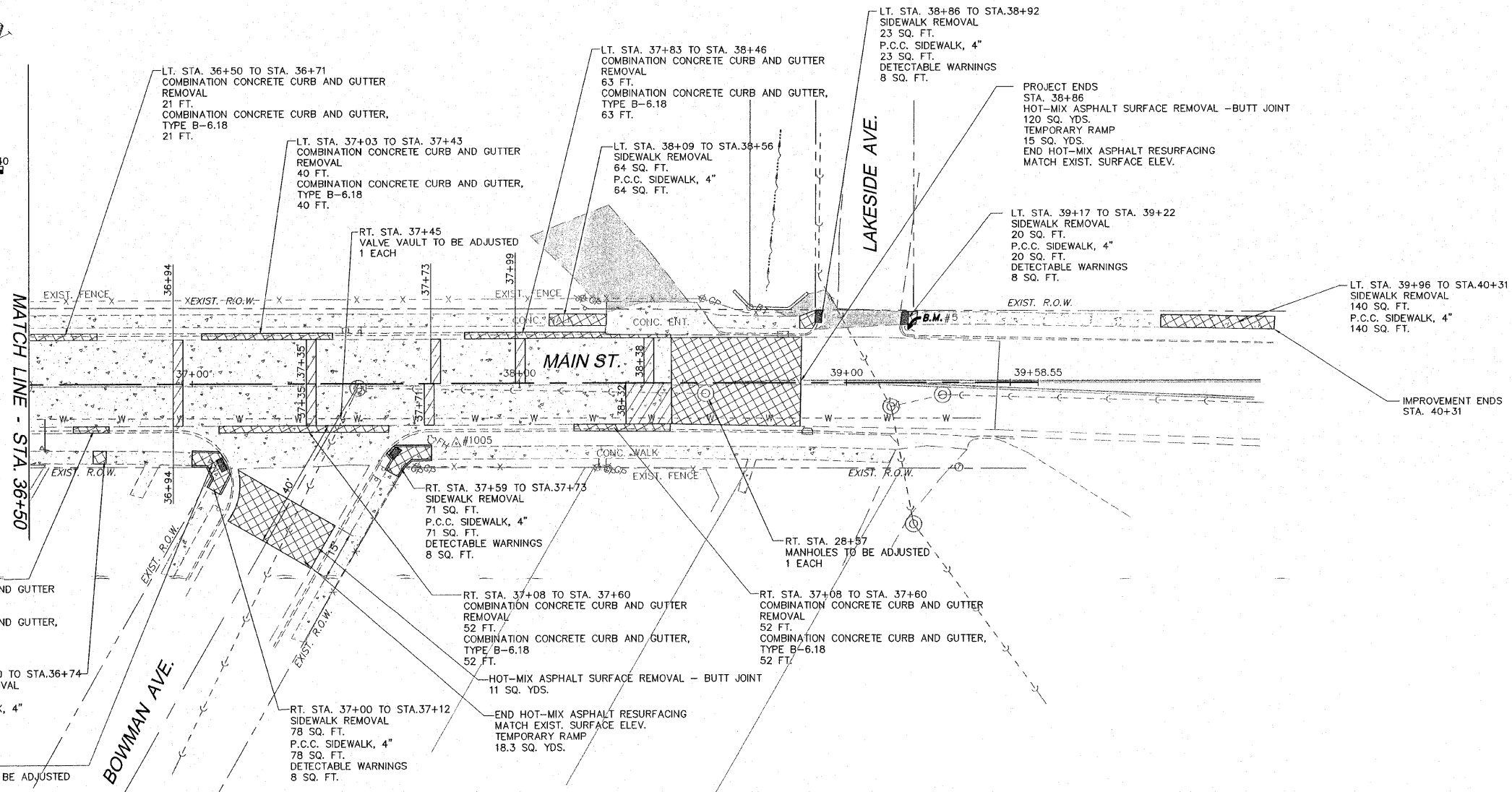
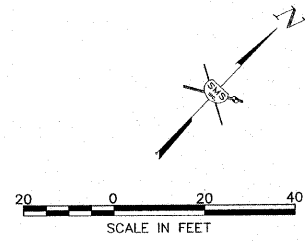


B.M. #4
RAILROAD SPIKE SET IN POWER POLE
NORTHEAST CORNER OF MAIN ST. AND
MONROE AVE.
STA. 33+66.14, 17.80 LT.
ELEV. = 444.55

EAST ALTON, ILLINOIS - MAIN STREET IMPROVEMENTS
 SECTION 09-00045-01-RS
 FAU ROUTE 8967
 PLAN AND PROFILE

SMS ENGINEERS
 Sheppard, Morgan & Schwaab, Inc.
 CONSULTING ENGINEERS AND LAND SURVEYORS
 215 Market Street, P.O. Box E, Alton, IL 62002 618/462-9755 E-mail: mail@smsengineers.com
 10 Central Industrial Drive, Suite 3, Granite City, IL 62040 618/987-0700 E-mail: mail@smsengineers.com
 DESIGN FIRM # 184-C00992

E ALTON MAIN ST PP4.DWG	PG.
REF. BK.	PG.
JOB NO. 227824.1	
DSN. BY: LDA	
DWN. BY: CDP	
CHK. BY: DEG	
DATE: MAY, 2009	
HORIZ: 1"=20'	
SCALE: VERT: 1"=5'	
SHEET 7 OF 9	



RT. STA. 36+64 TO STA. 36+75
COMBINATION CONCRETE CURB AND GUTTER
REMOVAL
11 FT.
COMBINATION CONCRETE CURB AND GUTTER,
TYPE B-6.18
11 FT.

RT. STA. 36+70 TO STA.36+74
SIDEWALK REMOVAL
16 SQ. FT.
P.C.C. SIDEWALK, 4"
16 SQ. FT.

RT. STA. 37+06
VALVE VAULT TO BE ADJUSTED
1 EACH

LT. STA. 36+50 TO STA. 36+71
COMBINATION CONCRETE CURB AND GUTTER
REMOVAL
21 FT.
COMBINATION CONCRETE CURB AND GUTTER,
TYPE B-6.18
21 FT.

LT. STA. 37+03 TO STA. 37+43
COMBINATION CONCRETE CURB AND GUTTER
REMOVAL
40 FT.
COMBINATION CONCRETE CURB AND GUTTER,
TYPE B-6.18
40 FT.

RT. STA. 37+45
VALVE VAULT TO BE ADJUSTED
1 EACH

LT. STA. 37+83 TO STA. 38+46
COMBINATION CONCRETE CURB AND GUTTER
REMOVAL
63 FT.
COMBINATION CONCRETE CURB AND GUTTER,
TYPE B-6.18
63 FT.

LT. STA. 38+09 TO STA.38+56
SIDEWALK REMOVAL
64 SQ. FT.
P.C.C. SIDEWALK, 4"
64 SQ. FT.

LT. STA. 38+86 TO STA.38+92
SIDEWALK REMOVAL
23 SQ. FT.
P.C.C. SIDEWALK, 4"
23 SQ. FT.
DETECTABLE WARNINGS
8 SQ. FT.

PROJECT ENDS
STA. 38+86
HOT-MIX ASPHALT SURFACE REMOVAL - BUTT JOINT
120 SQ. YDS.
TEMPORARY RAMP
15 SQ. YDS.
END HOT-MIX ASPHALT RESURFACING
MATCH EXIST. SURFACE ELEV.

LT. STA. 39+17 TO STA. 39+22
SIDEWALK REMOVAL
20 SQ. FT.
P.C.C. SIDEWALK, 4"
20 SQ. FT.
DETECTABLE WARNINGS
8 SQ. FT.

LT. STA. 39+96 TO STA.40+31
SIDEWALK REMOVAL
140 SQ. FT.
P.C.C. SIDEWALK, 4"
140 SQ. FT.

IMPROVEMENT ENDS
STA. 40+31

RT. STA. 37+59 TO STA.37+73
SIDEWALK REMOVAL
71 SQ. FT.
P.C.C. SIDEWALK, 4"
71 SQ. FT.
DETECTABLE WARNINGS
8 SQ. FT.

RT. STA. 37+08 TO STA. 37+60
COMBINATION CONCRETE CURB AND GUTTER
REMOVAL
52 FT.
COMBINATION CONCRETE CURB AND GUTTER,
TYPE B-6.18
52 FT.

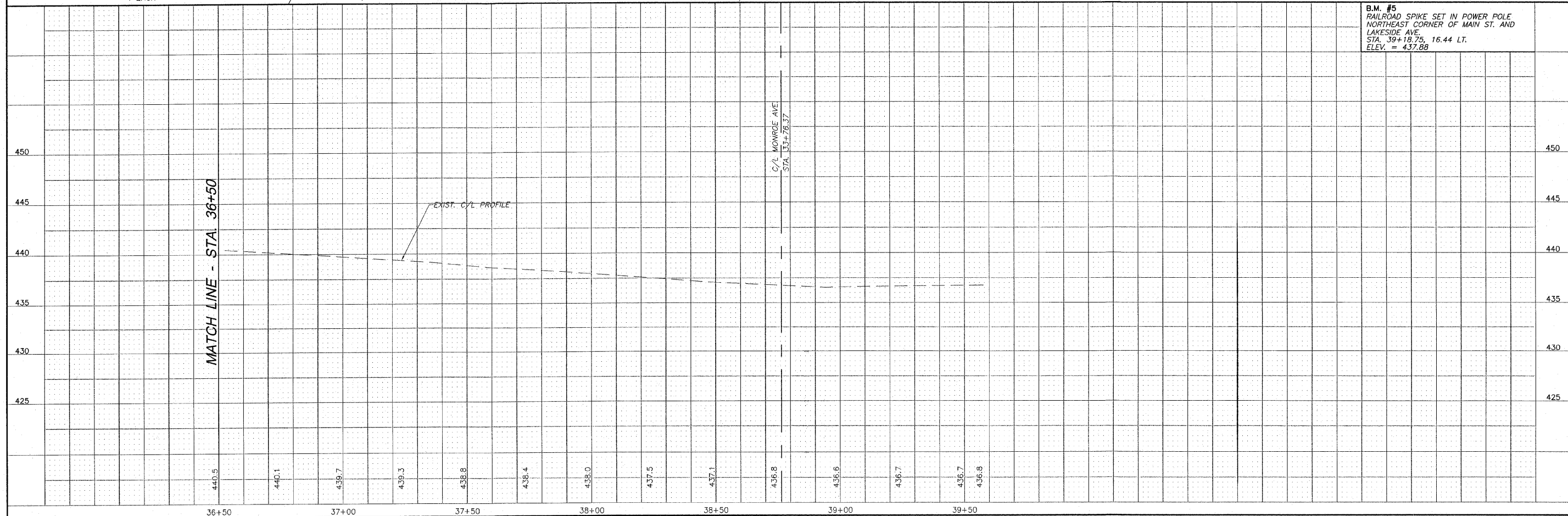
RT. STA. 28+57
MANHOLES TO BE ADJUSTED
1 EACH

RT. STA. 37+08 TO STA. 37+60
COMBINATION CONCRETE CURB AND GUTTER
REMOVAL
52 FT.
COMBINATION CONCRETE CURB AND GUTTER,
TYPE B-6.18
52 FT.

HOT-MIX ASPHALT SURFACE REMOVAL - BUTT JOINT
11 SQ. YDS.

END HOT-MIX ASPHALT RESURFACING
MATCH EXIST. SURFACE ELEV.
TEMPORARY RAMP
18.3 SQ. YDS.

B.M. #5
RAILROAD SPIKE SET IN POWER POLE
NORTHEAST CORNER OF MAIN ST. AND
LAKESIDE AVE.
STA. 39+18.75, 16.44 LT.
ELEV. = 437.88

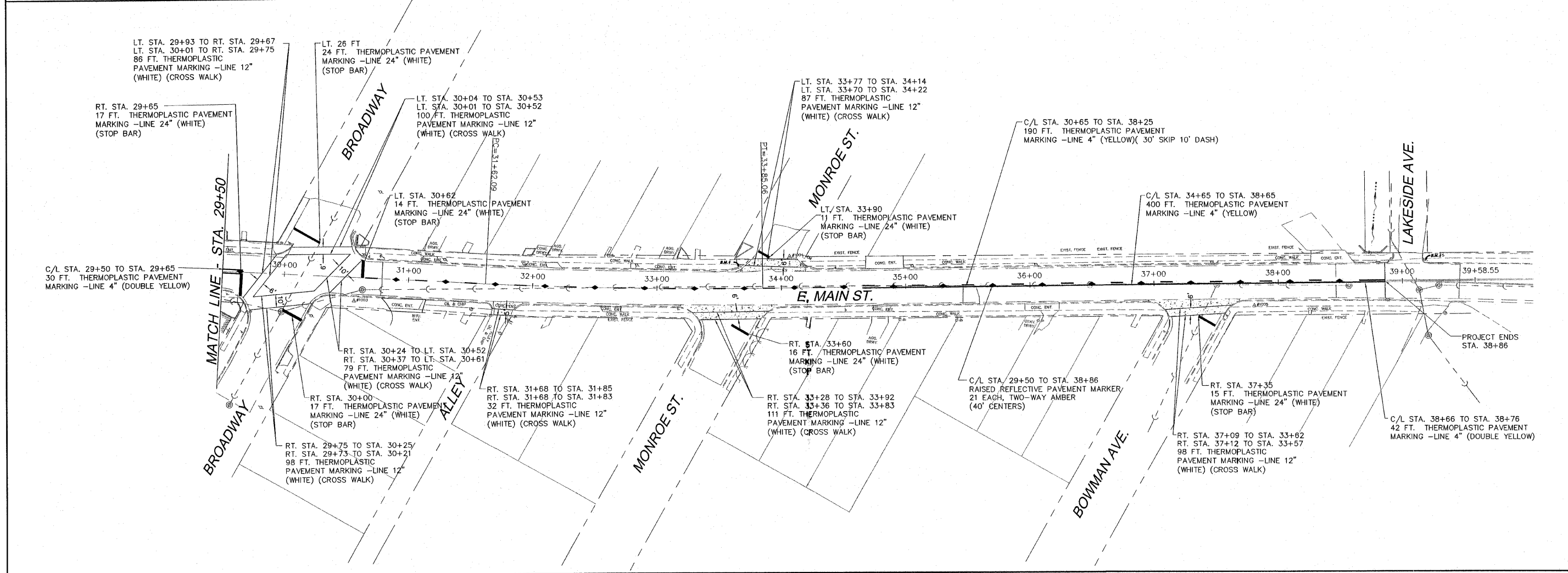
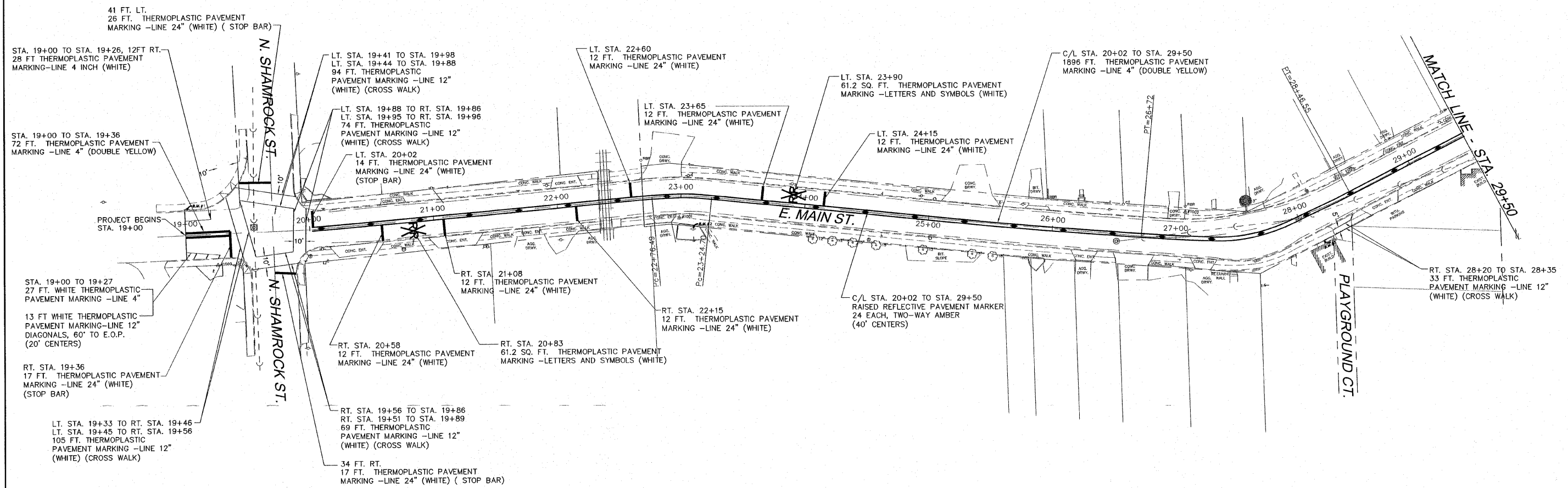


REVISIONS

SMS ENGINEERS
Sheppard, Morgan & Schwaab, Inc.
CONSULTING ENGINEERS AND LAND SURVEYORS
215 Market Street, P.O. Box E, Alton, IL 62002 618/462-3755 E-mail: mail@smsengineers.com
10 Central Industrial Drive, Suite 3, Granite City, IL 62040 618/977-5700 E-mail: mail@granitecity.com
DESIGN FIRM # 184-000992

EAST ALTON, ILLINOIS - MAIN STREET IMPROVEMENTS
SECTION 09-00045-01-RS
FAU ROUTE 8967
PLAN AND PROFILE

E ALTON MAIN ST PP5.DWG	
REF. BK	PG.
JOB NO.	227624.1
DSN. BY:	LDA
DWN. BY:	CDP
CHK. BY:	DEG
DATE:	MAY, 2009
SCALE: HORIZ: 1"=20'	
VERT: 1"=5'	
SHEET	8 OF 9



REVISIONS

SMS ENGINEERS
Sheppard, Morgan & Schwaab, Inc.
CONSULTING ENGINEERS AND LAND SURVEYORS
215 Market Street, P.O. Box E, Alton, IL 62002 618462-9755 E-mail: mail@smsengineers.com
10 Central Industrial Drive, Suite 3, Granite City, IL 62040 618677-9700 E-mail: mail@smsengineers.com
DESIGN FIRM # 184-000692

VILLAGE OF EAST ALTON
MAIN STREET IMPROVEMENTS
PAVEMENT MARKING PLAN

E ALTON MAIN ST PAVT MARKING

REF. BK.	PC
JOB NO.	227624.1
DSN. BY:	LDA
DWN. BY:	CDP
CHK. BY:	DEG
DATE:	MAY, 2009
SCALE:	1"=50'
SHEET	9 OF 9