

F.A.P. RTE.	SECTION	COUNTY	TOTAL SHEETS	SHEET NO.
06-00216-00-SW	ST. CLAIR	31	1	
FED. ROAD DIST. NO. ILLINOIS		FED. AID PROJECT		
CONTRACT NO. 97393				

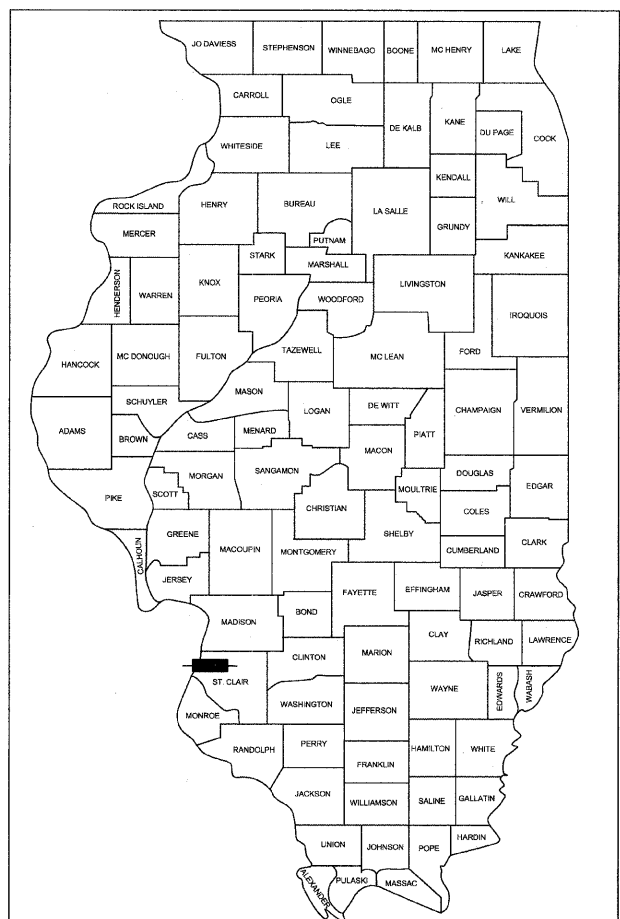
INDEX OF SHEETS

- 1 COVER SHEET
- 2 SUMMARY OF QUANTITIES & GENERAL NOTES
- 3-4 TYPICAL SECTIONS
- 5-6 SCHEDULES
- 7-13 PLAN & PROFILE SHEETS
- 14-15 SEWER PROFILES
- 16 TRAFFIC SIGNAL PLAN
- 17-24 ELECTRICAL SHEETS
- 25-31 CROSS SECTIONS
- HIGHWAY STANDARD DRAWINGS

STATE OF ILLINOIS DEPARTMENT OF TRANSPORTATION DIVISION OF HIGHWAYS

PLANS FOR PROPOSED FEDERAL AID HIGHWAY

CITY OF EAST ST. LOUIS
RIVER PARK DRIVE (F.A.U. RTE 9187)
CITY SECTION 06-00216-00-SW
PROJECT # ARA-00D8(131)
JOB # C-98-302-09
ST. CLAIR COUNTY
ENHANCEMENT FUNDS

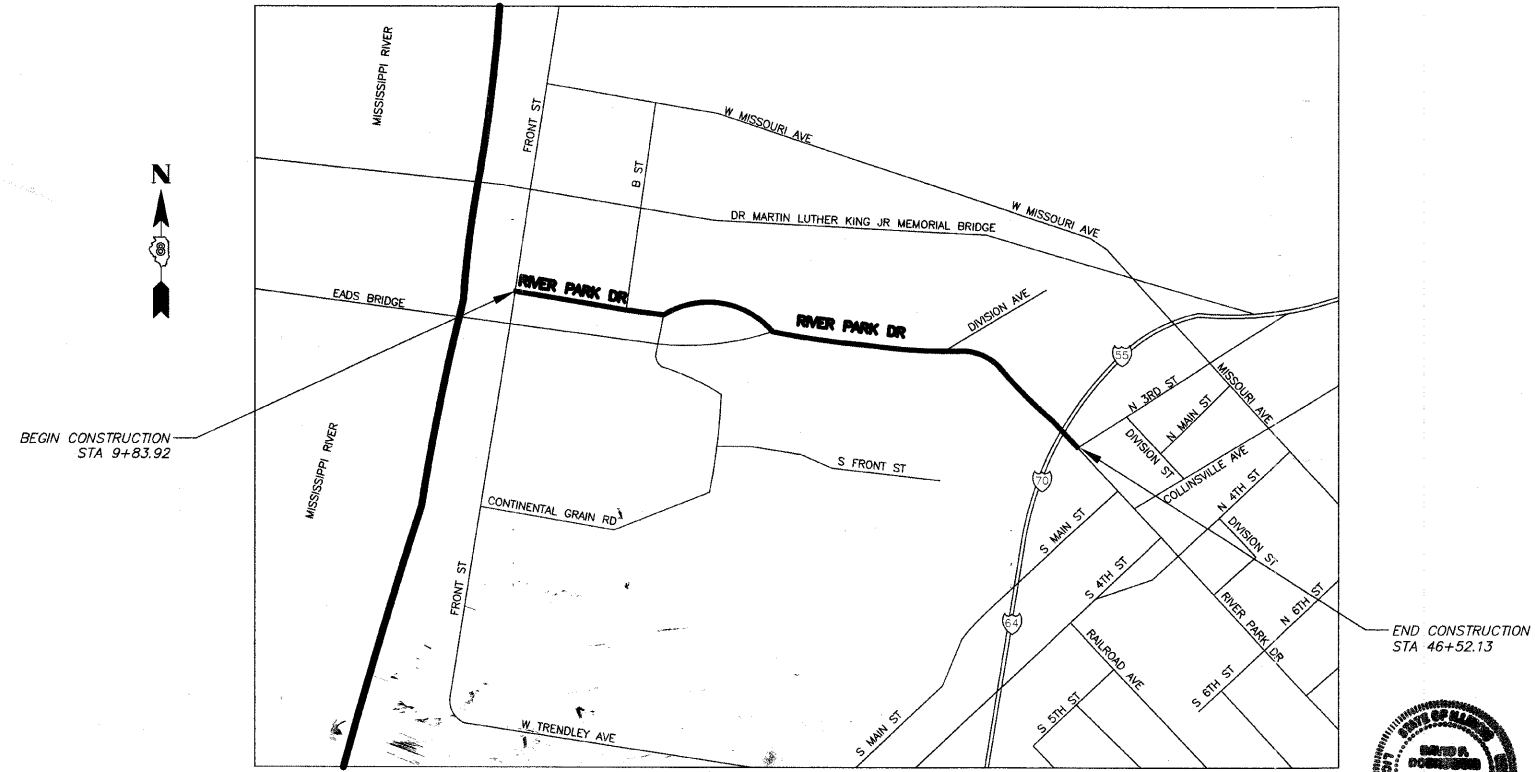


HIGHWAY STANDARDS:

- 000001-05 STANDARD SYMBOLS, ABBREVIATIONS AND PATTERNS
- 424001-05 CURB RAMPS FOR SIDEWALKS
- 442201-03 CLASS C AND D PATCHES
- 542301-02 PRECAST REINFORCED CONCRETE FLARED END SECTION
- 602301-02 INLET - TYPE A
- 602401-02 MANHOLE, TYPE A
- 604061-02 FRAME AND GRATE TYPE 12
- 606001-04 CONCRETE CURB TYPE B AND COMBINATION CONCRETE CURB AND GUTTER
- 668001-01 US GEOLOGICAL SURVEY AND NATIONAL GEODETIC SURVEY BENCHMARKS RESETTING METHOD
- 701501-05 URBAN LANE CLOSURE, 2L, 2W, UNDIVIDED
- 701606-06 URBAN LANE CLOSURE, MULTILANE, 2W WITH MOUNTABLE MEDIAN
- 701901-01 TRAFFIC CONTROL DEVICES
- 701006-03 OFF-ROAD OPERATIONS, 2L, 2W, 15' TO 24" FROM PAVEMENT EDGE
- 780001-02 TYPICAL PAVEMENT MARKINGS
- 857001-01 STANDARD PHASE DESIGNATION DIAGRAMS AND PHASE SEQUENCES
- 876001-01 PEDESTRIAN PUSH BUTTON POST
- 880006-01 TRAFFIC SIGNAL MOUNTING DETAILS

UTILITY OWNERS

AGENCIES KNOWN TO HAVE UNDERGROUND FACILITIES WITHIN THE LIMITS OF THIS IMPROVEMENT ARE THE FOLLOWING (*JULIE MEMBER):
 *AMEREN UE
 *AMERTECH
 *ILLINOIS AMERICAN WATER COMPANY
 *CITY OF EAST ST. LOUIS
 *MCI



LOCATION MAP
NOT TO SCALE

TOTAL LENGTH OF SECTION 3,668.21 FEET = 0.695 MILES

DESIGN SPEED
URBAN 30 MPH

ROADWAY DESIGN DESIGNATION
LOCAL ROAD & MINOR ARTERIAL

DESIGN TRAFFIC
2008 ADT 11,483
2028 ADT 17,062

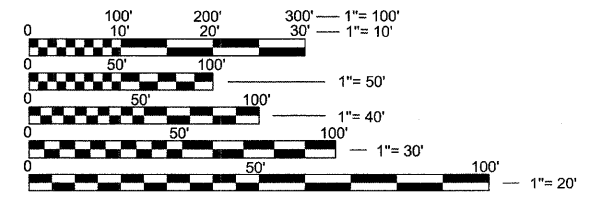


ABNA ENGINEERING, INC
CONSULTING ENGINEERS
EAST ST. LOUIS, ILLINOIS

David P. Dobkowski 11/30/2009
NAME DAVID P. DOBKOWSKI EXPIRATION DATE

DATE	BY	REVISIONS

DATE	BY	REVISIONS



FULL SIZE PLANS HAVE BEEN PREPARED USING STANDARD ENGINEERING SCALES. REDUCED SIZED PLANS WILL NOT CONFORM TO STANDARD SCALES. IN MAKING MEASUREMENTS ON REDUCED PLANS, THE ABOVE SCALES MAY BE USED.

J.U.L.I.E.
JOINT UTILITY LOCATION INFORMATION FOR EXCAVATION
1-800-892-0123

DATE
FILE NAME
PLOT SCALE
USER NAME

APPROVED August 6, 2009
Alvin L. Parks, Jr.
ALVIN PARKS, JR., MAYOR, CITY OF EAST ST. LOUIS

PASSED 8/12, 2009
[Signature]
DISTRICT 8 ENGINEER OF LOCAL ROADS AND STREETS

RELEASING FOR BID BASED ON LIMITED REVIEW 8/12, 2009
Mary C. Lamie
MARY C. LAMIE, P.E.
DEPUTY DIRECTOR OF HIGHWAYS
REGION FIVE ENGINEER

STATE OF ILLINOIS
DEPARTMENT OF TRANSPORTATION

**PRINTED BY THE AUTHORITY
OF THE STATE OF ILLINOIS**