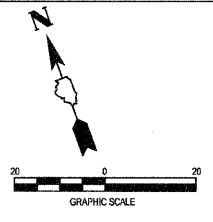
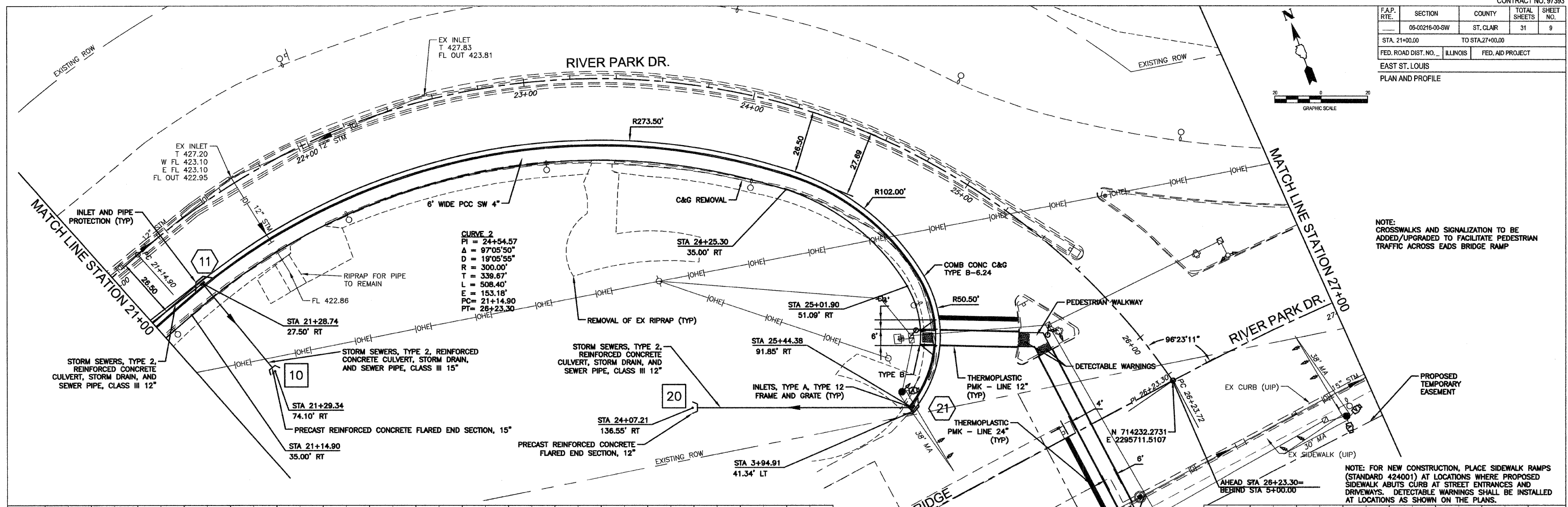


F.A.P. RTE.	SECTION	COUNTY	TOTAL SHEETS	SHEET NO.
06-00216-00-SW	ST. CLAIR		31	9
STA. 21+00.00		TO STA. 27+00.00		
FED. ROAD DIST. NO. ILLINOIS		FED. AID PROJECT		
EAST ST. LOUIS				
PLAN AND PROFILE				



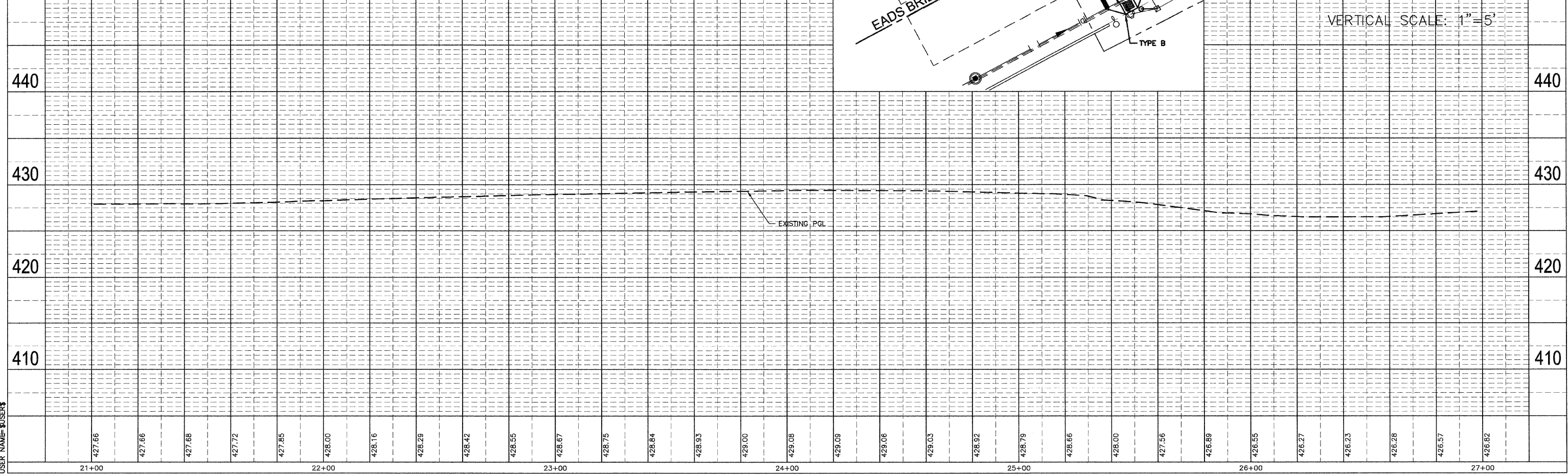
DATE	
BY	
REVISIONS	
1. PLOTTED	
2. CHECKED	
3. APPROVED	
4. DATE	
5. NAME	
6. NO.	

DATE	
BY	
REVISIONS	
1. PLOTTED	
2. CHECKED	
3. APPROVED	
4. DATE	
5. NAME	
6. NO.	



NOTE: CROSSWALKS AND SIGNALIZATION TO BE ADDED/UPGRADED TO FACILITATE PEDESTRIAN TRAFFIC ACROSS EADS BRIDGE RAMP

NOTE: FOR NEW CONSTRUCTION, PLACE SIDEWALK RAMPS (STANDARD 424001) AT LOCATIONS WHERE PROPOSED SIDEWALK ABUTS CURB AT STREET ENTRANCES AND DRIVEWAYS. DETECTABLE WARNINGS SHALL BE INSTALLED AT LOCATIONS AS SHOWN ON THE PLANS.



PLOT DATE = \$DATE\$
 FILE NAME = \$FILE\$
 PLOT SCALE = \$SCALE\$
 USER NAME = \$USER\$