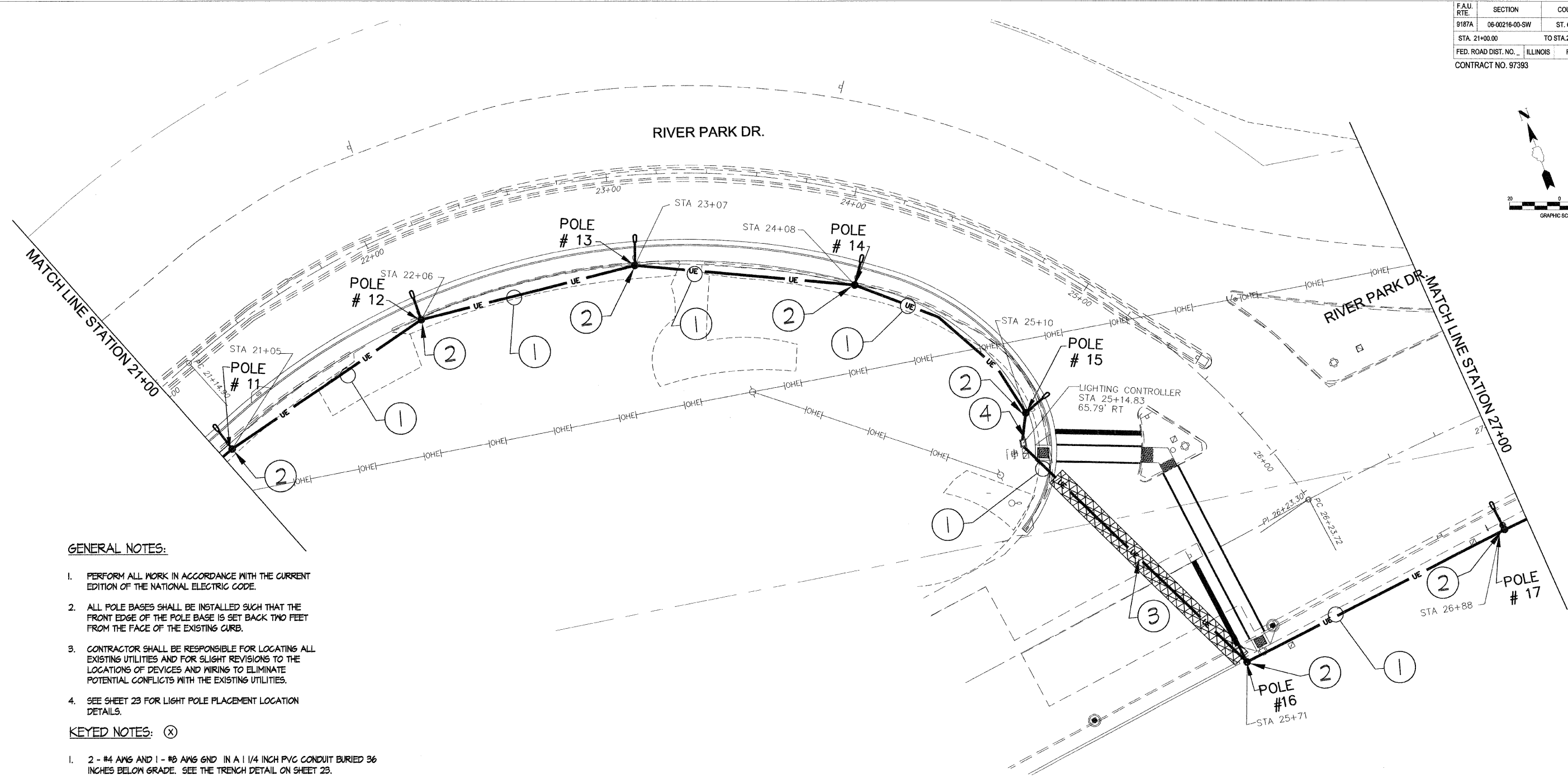
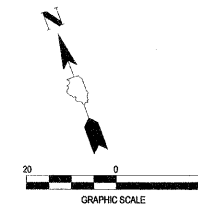


F.A.U. RTE.	SECTION	COUNTY	TOTAL SHEETS	SHEET NO.
9187A	08-00216-00-SW	ST. CLAIR	34	19
STA. 21+00.00		TO STA. 27+00.00		
FED. ROAD DIST. NO. _		ILLINOIS	FED. AID PROJECT	
CONTRACT NO. 97393				



GENERAL NOTES:

1. PERFORM ALL WORK IN ACCORDANCE WITH THE CURRENT EDITION OF THE NATIONAL ELECTRIC CODE.
2. ALL POLE BASES SHALL BE INSTALLED SUCH THAT THE FRONT EDGE OF THE POLE BASE IS SET BACK TWO FEET FROM THE FACE OF THE EXISTING CURB.
3. CONTRACTOR SHALL BE RESPONSIBLE FOR LOCATING ALL EXISTING UTILITIES AND FOR SLIGHT REVISIONS TO THE LOCATIONS OF DEVICES AND WIRING TO ELIMINATE POTENTIAL CONFLICTS WITH THE EXISTING UTILITIES.
4. SEE SHEET 23 FOR LIGHT POLE PLACEMENT LOCATION DETAILS.

KEYED NOTES: (X)

1. 2 - #4 AWG AND 1 - #6 AWG GND IN A 1 1/4 INCH PVC CONDUIT BURIED 36 INCHES BELOW GRADE. SEE THE TRENCH DETAIL ON SHEET 23.
2. RELOCATED LIGHT POLE AND BASE AS INDICATED. SEE SHEET 9 FOR EXISTING LOCATION. SEE THE POLE BASE DETAIL ON SHEET 23. THIS LIGHT FIXTURE SHALL BE CONNECTED TO LIGHTING CIRCUIT #1 AS INDICATED ON THE WIRING DIAGRAM - SERVICE #1 ON SHEET 23. WIRE SIZES BETWEEN POLES SHALL BE AS INDICATED. EACH LIGHT POLE SHALL BE CONNECTED TO FEEDER VIA THE POLE MANUFACTURERS FUSE KIT WITH FUSE RATED AT 10 AMPERES. THE FUSE SHALL BE LOCATED IN THE HANDHOLE AND CONNECTED VIA A #10 AWG FEEDER TAP. WIRING RISERS UP THE POLES SHALL BE #12 AWG. SPLICE WIRING INSIDE OF POLE HANDHOLE WITH APPROVED CONNECTORS.
3. CONTRACTOR SHALL BORE CONDUIT BENEATH EXISTING ROADWAY.
4. EXISTING LIGHTING CONTROLLER. REMOVE EXISTING 50A, 2 POLE CIRCUIT BREAKERS AND INSTALL 60A, 2 POLE CIRCUIT BREAKER.

PLOT DATE = \$DATE\$
FILE NAME = \$FILE\$
PLOT SCALE = \$SCALE\$
USER NAME = \$USER\$



HR
HURST-ROSCHÉ
ENGINEERS INC.
PROFESSIONAL DESIGN NUMBER: 184-000288