

F.A.P. RTE.	SECTION	COUNTY	TOTAL SHEETS	SHEET NO.
331		JACKSON	67	1

•(12-1)B-1;D9 BSMART FY 10-1

STATE OF ILLINOIS
DEPARTMENT OF TRANSPORTATION
DIVISION OF HIGHWAYS

**PROPOSED
HIGHWAY PLANS**

PROJECT ESP -0331(050)
FAP ROUTE 331 (IL 13)

SECTION (12-1)B-1;D9 BSMART FY10-1
ILLINOIS 13 EASTBOUND AND WESTBOUND
OVER MUD CREEK
JACKSON COUNTY

C-99-024-09

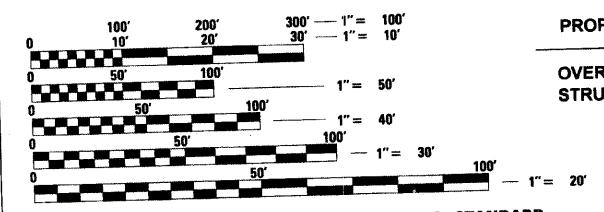
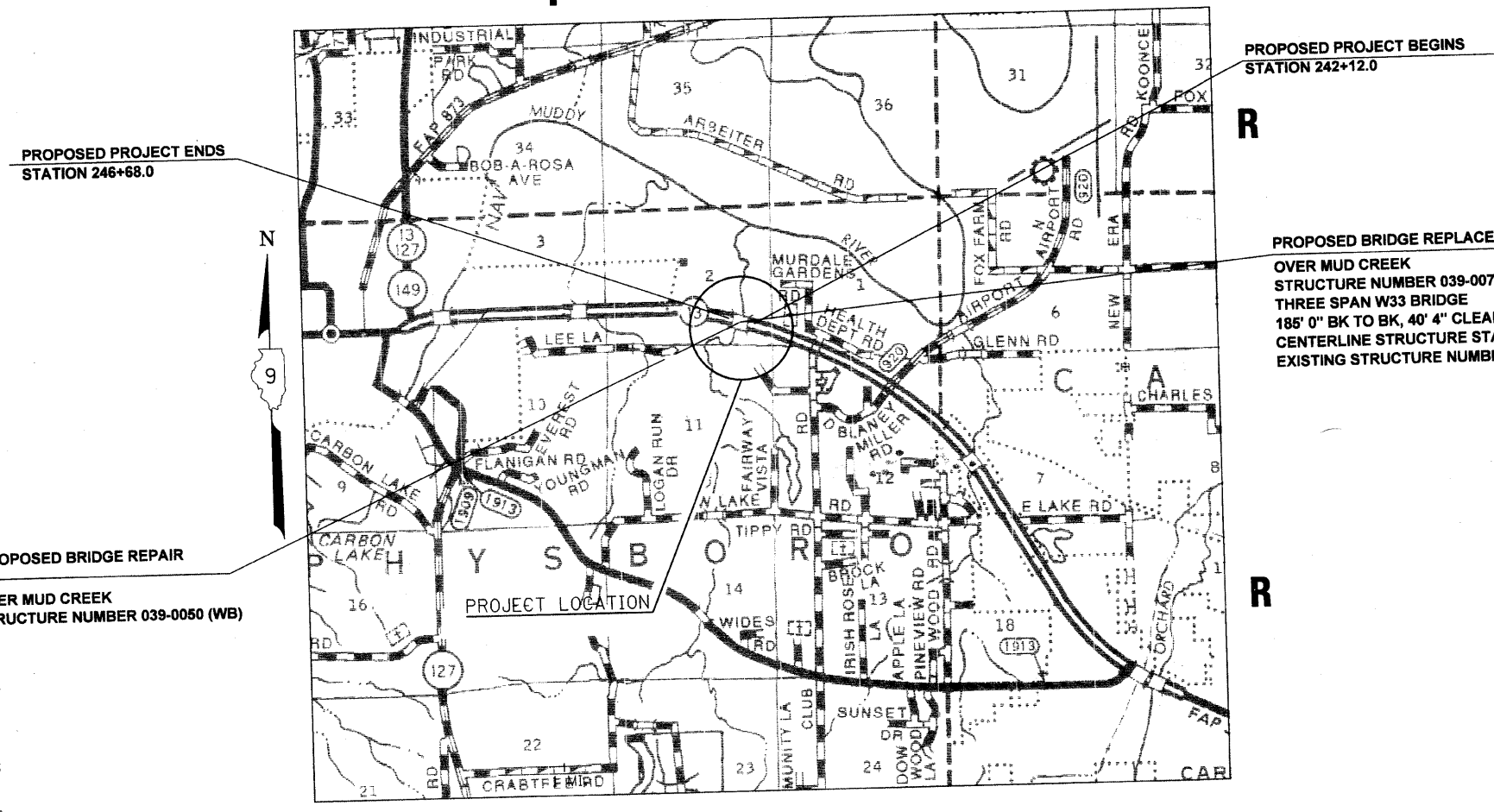
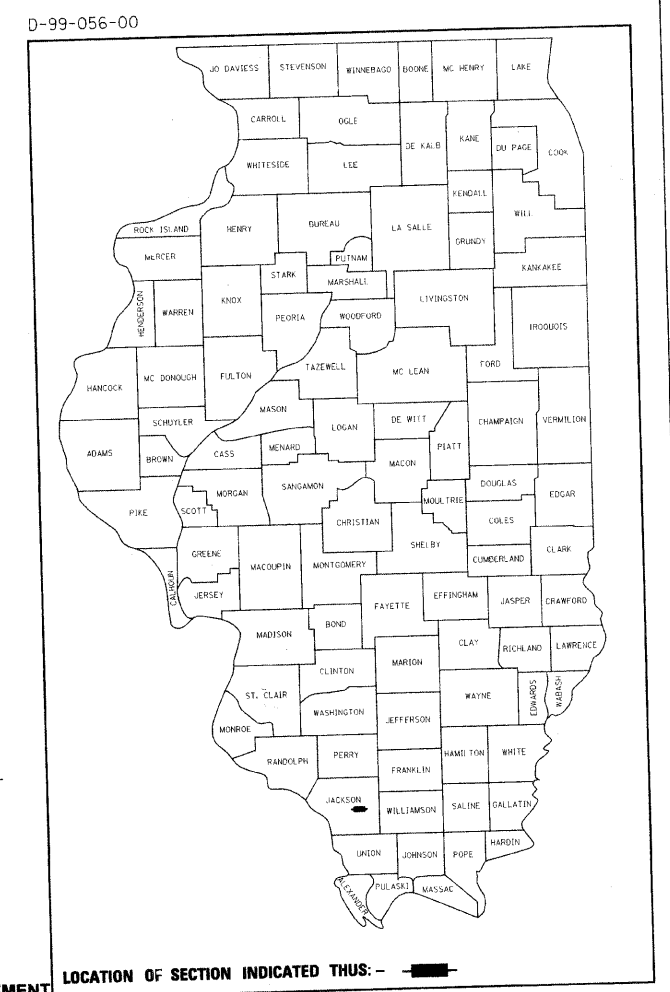
FOR INDEX OF SHEETS, SEE SHEET NO. 2
FOR SUMMARY OF QUANTITIES, SEE SHEET NUMBERS 5 - 8

TRAFFIC DATA

2008 ADT=11,000 WITH 6.5% TRUCKS
POSTED SPEED 55MPH

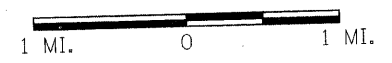
TOWNSHIP

MURPHYSBORO



FULL SIZE PLANS HAVE BEEN PREPARED USING STANDARD ENGINEERING SCALES. REDUCED SIZED PLANS WILL NOT CONFORM TO STANDARD SCALES. IN MAKING MEASUREMENTS ON REDUCED PLANS, THE ABOVE SCALES MAY BE USED.

J.U.L.I.E.
JOINT UTILITY LOCATION INFORMATION FOR EXCAVATION
1-800-892-0123 or www.julietcall.com



NET LENGTH OF ROADWAY: 272 FEET
NET LENGTH OF STRUCTURE: 185 FEET
NET LENGTH OF PROJECT: 457 FEET

STATE OF ILLINOIS
DEPARTMENT OF TRANSPORTATION
DIVISION OF HIGHWAYS

SUBMITTED *March 19, 2009*
Nancy C. Krami
DISTRICT ENGINEER

August 14, 2009
Charles G. Ingersoll
ENGINEER OF DESIGN AND ENVIRONMENT

August 14, 2009
Christine M. Reed
DIRECTOR, DIVISION OF HIGHWAYS

**PRINTED BY THE AUTHORITY
OF THE STATE OF ILLINOIS**

(618) 509-2171
CENTREX 782-4554
PROJECT ENGINEER: CHARLES STEIN
DESIGNER: GEORGE SHEPARD