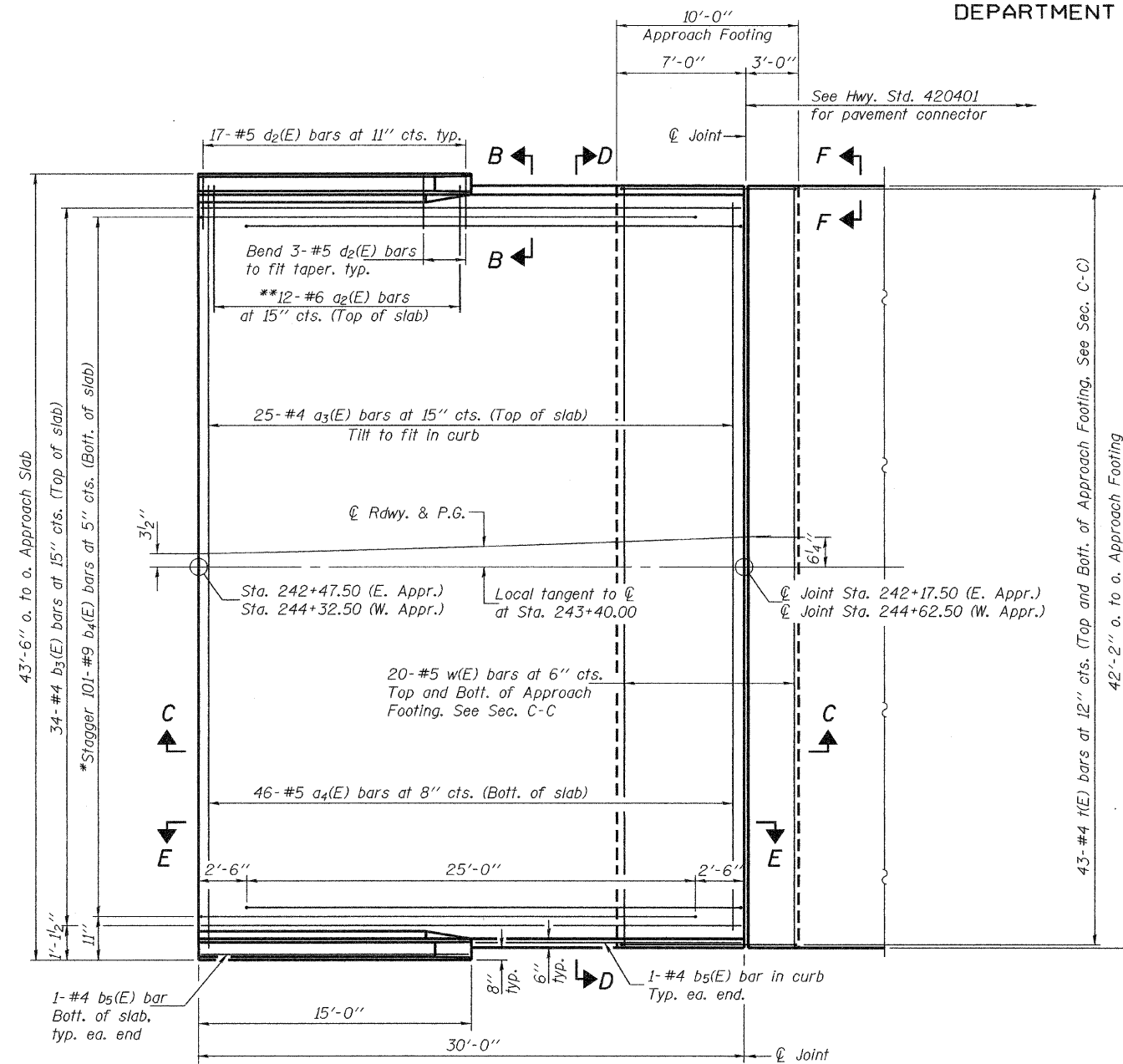


STATE OF ILLINOIS
DEPARTMENT OF TRANSPORTATION

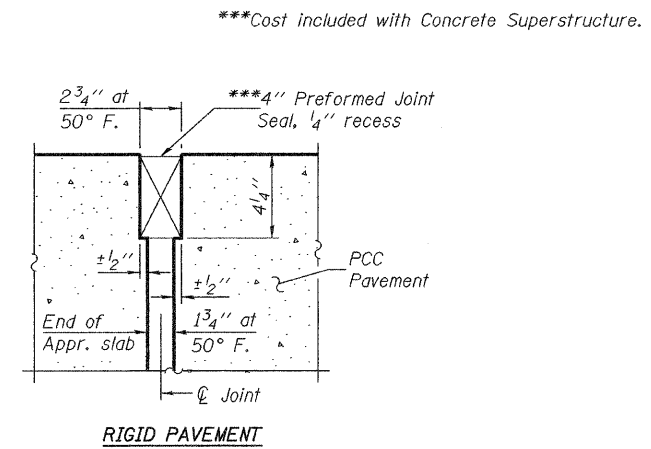
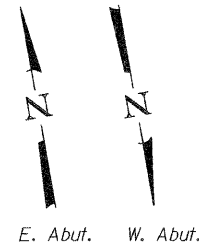
Notes:
See sheet 11 of 22 for Sections C-C, D-D and View E-E.
a₃(E), a₄(E), and w(E) bar spacings measured perpendicular to ϕ Rdwy.



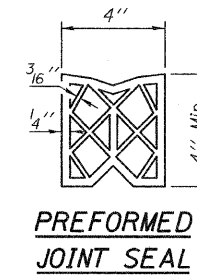
PLAN

(West Approach shown - East Approach similar by mirror image)

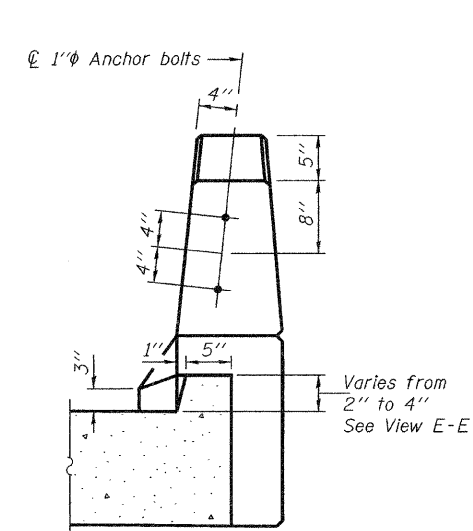
*Tilt #9 b₁(E) bars as required to maintain clearance.
**Alternate with a₃(E) bars, typ. ea. parapet.



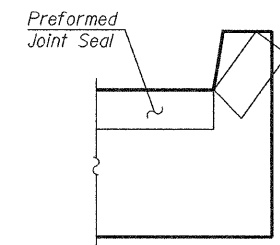
DETAIL A



PREFORMED JOINT SEAL



VIEW B-B
(Exit ends only)



VIEW F-F

Angle Preformed Joint Seal at 45° at curbs when req'd for drainage.

| | |
|----------|------------------|
| DESIGNED | Rebecca Mitchell |
| CHECKED | Mark D. Shaffer |
| DRAWN | h.t. duong |
| CHECKED | RLM/MDS |

| | |
|----------|---|
| EXAMINED | Thomas J. Domagalak ENGINEER OF BRIDGE DESIGN |
| PASSED | Ralph E. Anderson ENGINEER OF BRIDGES AND STRUCTURES |

July 27, 2009

BRIDGE APPROACH SLAB DETAILS
STRUCTURE NO. 039-0070 (E.B.)

| | | | | | |
|---------------------------|-------------|-------------|---------------------------|--------------------|-----------|
| SHEET NO. 10 22 SHEETS | F.A.P. RTE. | SECTION | COUNTY | TOTAL SHEETS | SHEET NO. |
| | 331 | (12-BY-1)-1 | JACKSON | 67 | 31 |
| FED. ROAD DIST. NO. _ | | | ILLINOIS FED. AID PROJECT | | |
| | | | | CONTRACT NO. 98641 | |