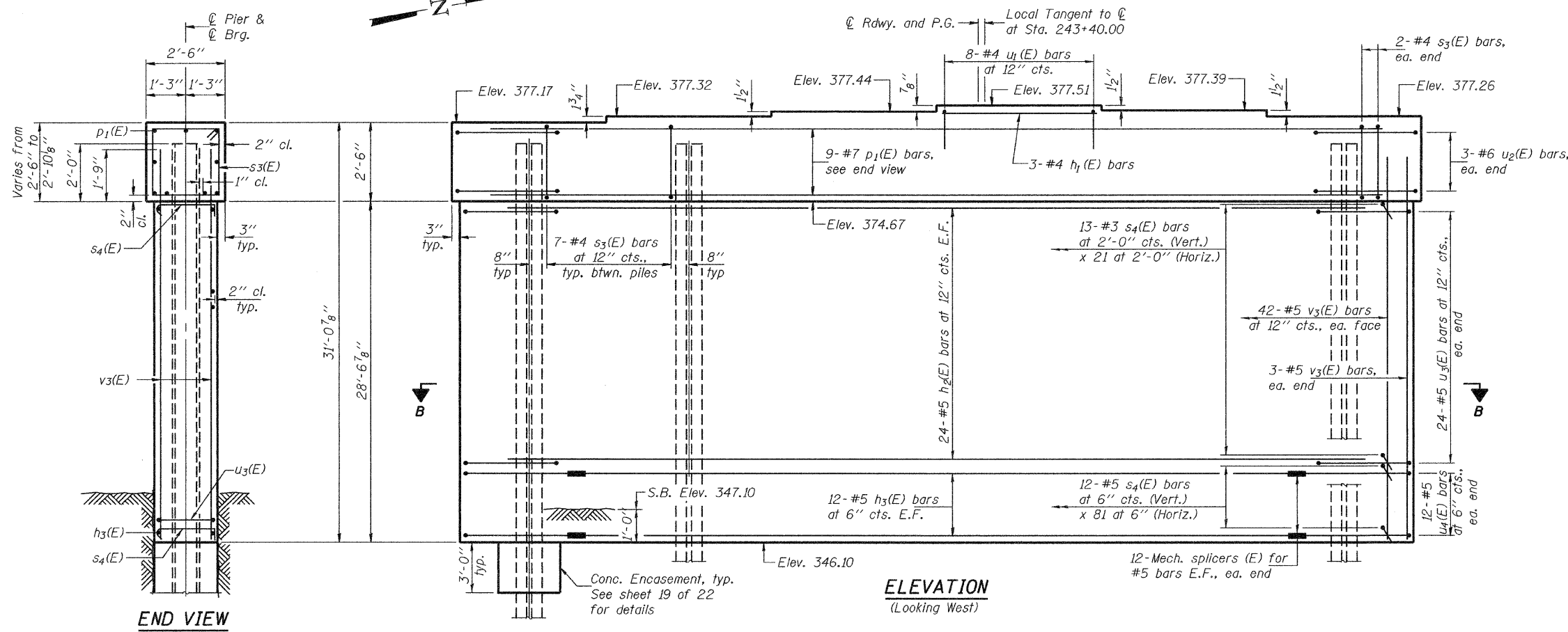
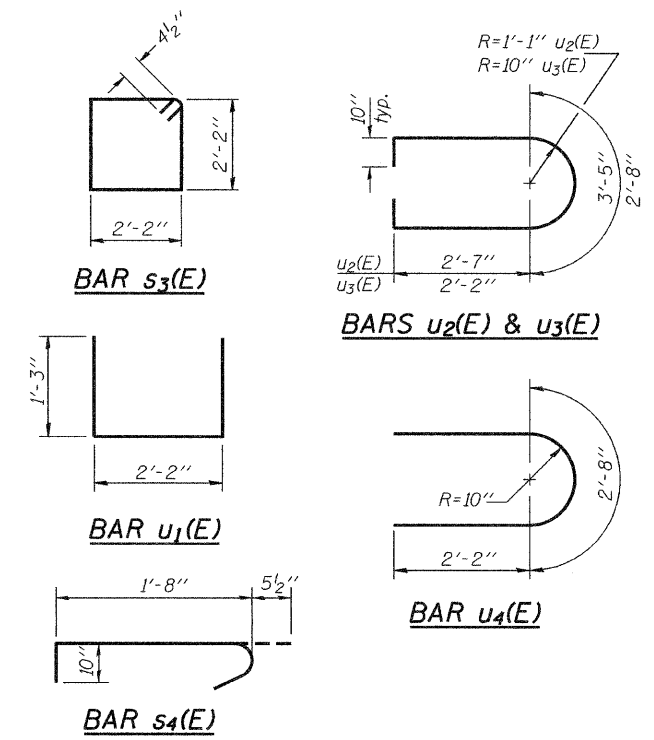
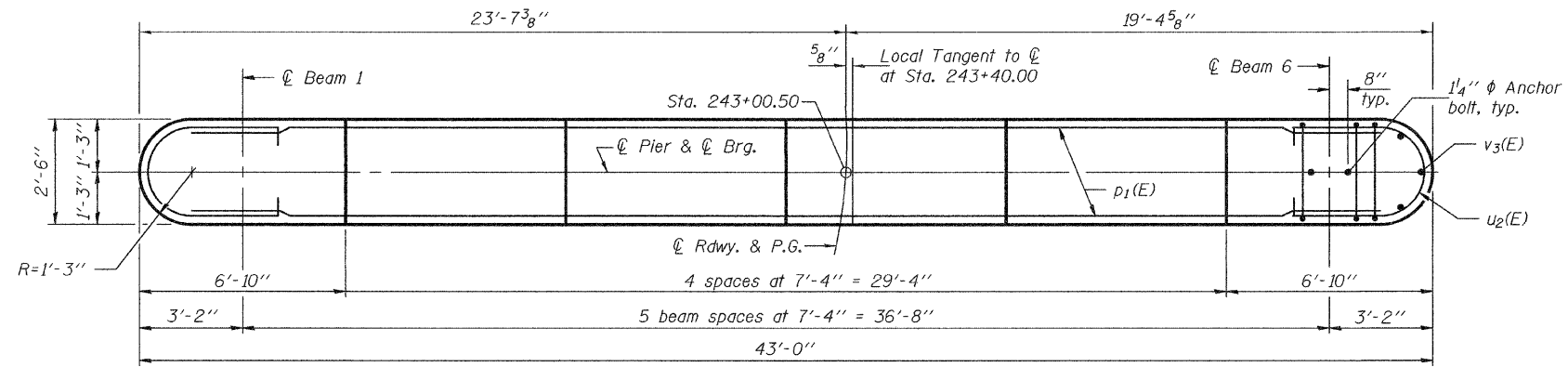


STATE OF ILLINOIS
DEPARTMENT OF TRANSPORTATION

*Forms shall be placed below Elevation 346.10 after excavation for pier walls. If a portion of the pier wall is under water, concrete shall be trimmed under water into forms according to Article 503.08 of the Standard Specifications. Concrete shall be trimmed to an Elevation 1'-0" above the water level at the time of construction.

Notes: Space reinforcement in cap to miss anchor bolts. Four steps monolithically with cap. For details of piles, see sheet 19 of 22.



BILL OF MATERIAL

Bar	No.	Size	Length	Shape
h ₁ (E)	3	#4	7'-0"	—
h ₂ (E)	48	#5	40'-6"	—
h ₃ (E)	24	#5	36'-2"	—
p ₁ (E)	9	#7	40'-6"	—
s ₃ (E)	39	#4	9'-5"	□
s ₄ (E)	1245	#5	3'-0"	┌
u ₁ (E)	8	#4	4'-8"	□
u ₂ (E)	6	#6	10'-3"	┌
u ₃ (E)	48	#5	8'-8"	┌
u ₄ (E)	24	#5	7'-0"	┌
v ₃ (E)	90	#5	30'-3"	—
Concrete Structures		Cu. Yd.	99.6	
Reinforcement Bars, Epoxy Coated		Pound	11400	
Structure Excavation		Cu. Yd.	149.7	
Furnishing Steel Piles HP12x84		Foot	396	
Driving Piles		Foot	396	
Underwater Structure Excavation Protection, Location 1		Each	1	
Pile Shoes		Each	6	
Mechanical Splicers		Each	48	
Concrete Encasement		Cu. Yd.	2.1	

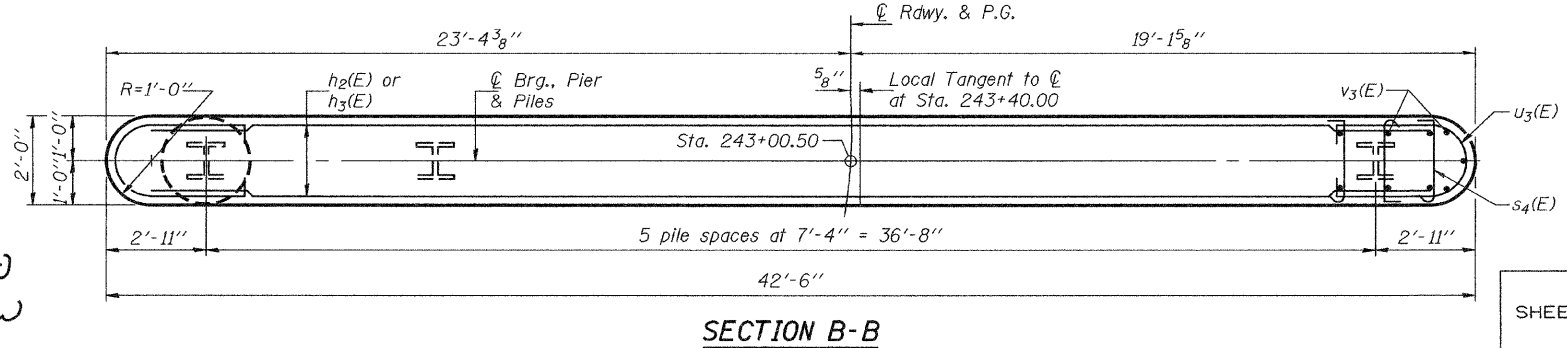
Bars indicated thus 32 x 2-#5 etc. indicates 32 lines of bars with 2 lengths per line.

PILE DATA

Type: Steel HP12x84 with Pile Shoes
Nominal Required Bearing: 664 Kips
Factored Resistance Available: 221 Kips
Est. Length: 66'
No. Production Piles: 6
No. Test Piles: 0

DESIGNED	Rebecca Mitchell
CHECKED	Mark D. Shaffer
DRAWN	AMC htd Amber Seiber
CHECKED	RLM/MDS

EXAMINED *Thomas J. Domagalicki*
ENGINEER OF BRIDGE DESIGN
PASSESSED *Ralph E. Anderson*
ENGINEER OF BRIDGES AND STRUCTURES
July 27, 2009



PIER 1
STRUCTURE NO. 039-0070 (E.B.)

SHEET NO. 17 22 SHEETS	F.A.P. RTE.	SECTION	COUNTY	TOTAL SHEETS	SHEET NO.
	331	(12-BY-1)-1	JACKSON	61	38
FED. ROAD DIST. NO. - ILLINOIS			FED. AID PROJECT		
CONTRACT NO. 98641					