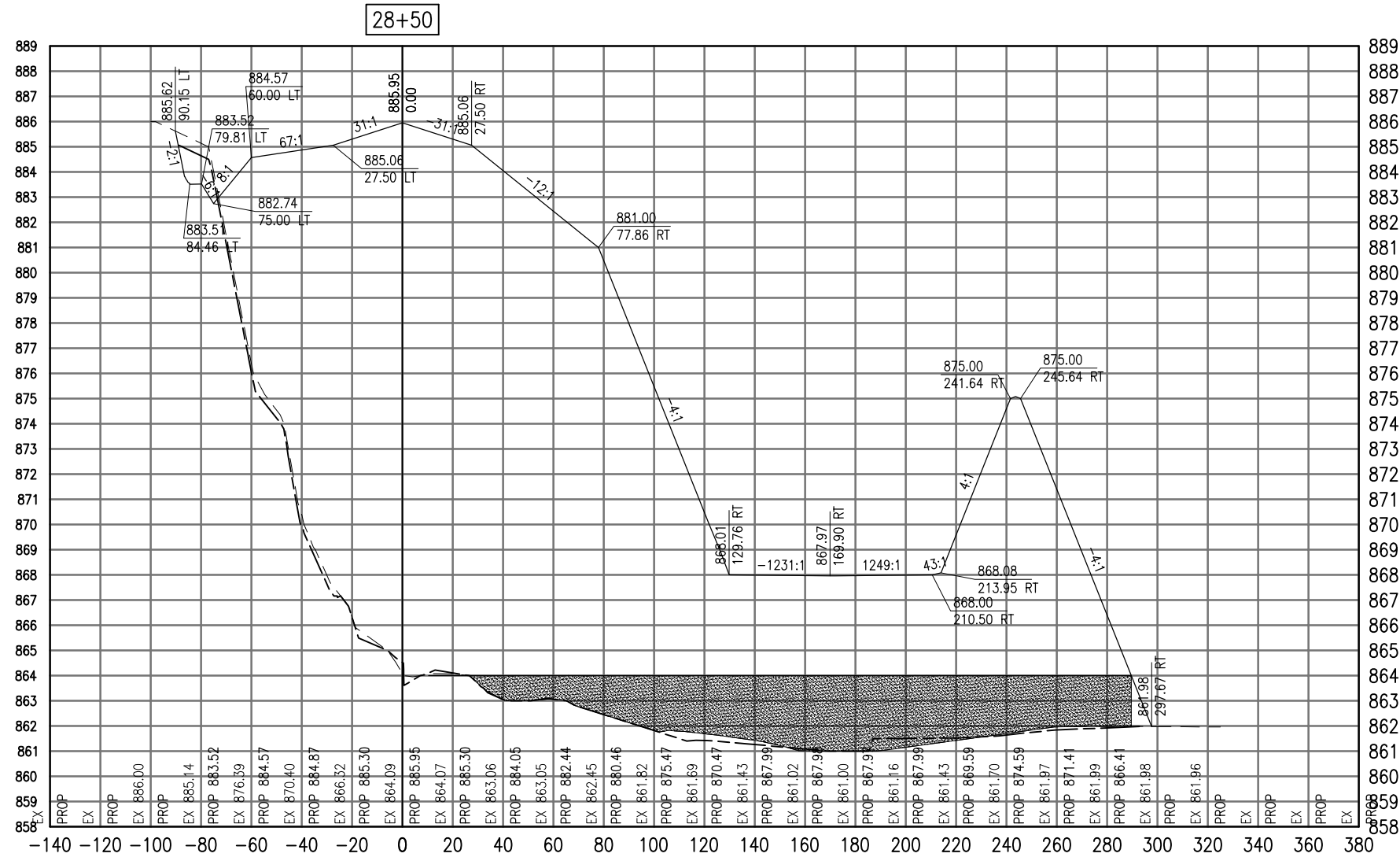


SEE LEGEND, PAGE 17



Total Volume at Station 28+50.00	
Cut Area	24.13
Fill Area	4507.99
Cut Vol	20.06
Fill Vol	4127.40
Cum Cut Vol	498.40
Cum Fill Vol	35989.39
Net Vol	-35490.99

Material(s) at Station 28+50.00			
Material Name	Area	Volume	Cumulative Volume
Cut	41.75	33.84	368.01

DATE	REVISION
09/03/09	ADDENDUM 1

VILLAGE OF LAKE IN THE HILLS
 600 Harvest Gate
 Lake in the Hills, Illinois 60156 Telephone:
 847.960.7410
 Fax: 847.960.7515



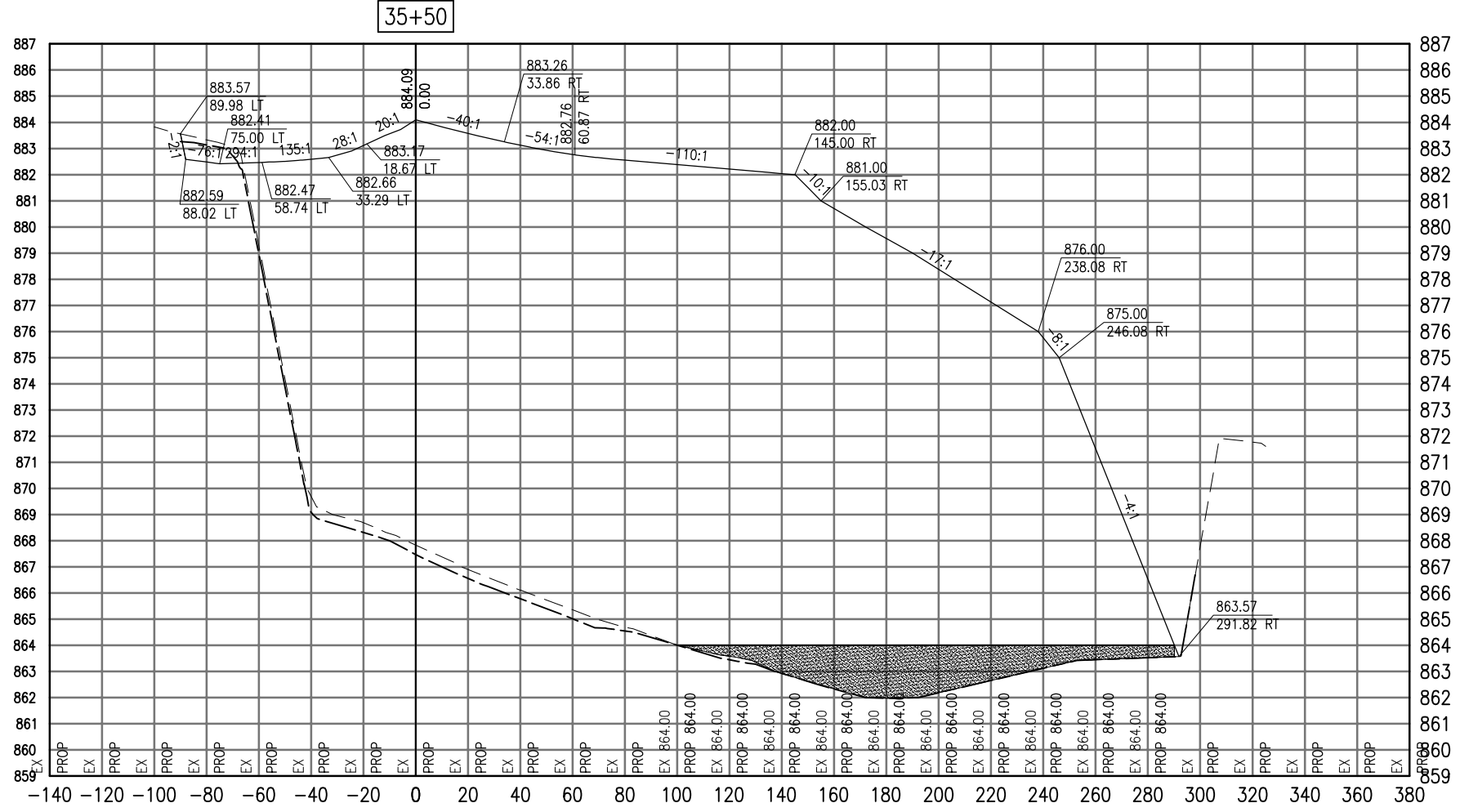
Hanson No.	08A0150
Filename	ACAD-SECTIONS_3A.DWG
Scale	1"=30'
Date	AUGUST 14, 2009

LAYOUT	SJM	08/13/09
DRAWN	BLB	08/13/09
REVIEWED	RMH	8/7/09

HANSON
 Copyright Hanson Professional Services Inc. 2009
Hanson Professional Services Inc.
 815 Commerce Drive Suite 200
 Oak Brook, Illinois 60523

CROSS SECTIONS
STA. 28+50
 CONSTRUCT PARALLEL TAXIWAY A,
 STAGE 1, GRADING AND DRAINAGE
 IDA No. 3CK-3877 AIP No. 3-17-0112-B12

SEE LEGEND, PAGE 17



Cut Area	30.42
Fill Area	5225.48
Cut Vol	14.08
Fill Vol	2419.20
Cum Cut Vol	14.08
Cum Fill Vol	2419.20
Net Vol	-2405.12

Material Name	Area	Volume	Cumulative Volume
Cut	60.59	28.05	28.05

DATE	REVISION
09/03/09	ADDENDUM 1

VILLAGE OF LAKE IN THE HILLS
 600 Harvest Gate
 Lake in the Hills, Illinois 60156 Telephone:
 847.960.7410
 Fax: 847.960.7515



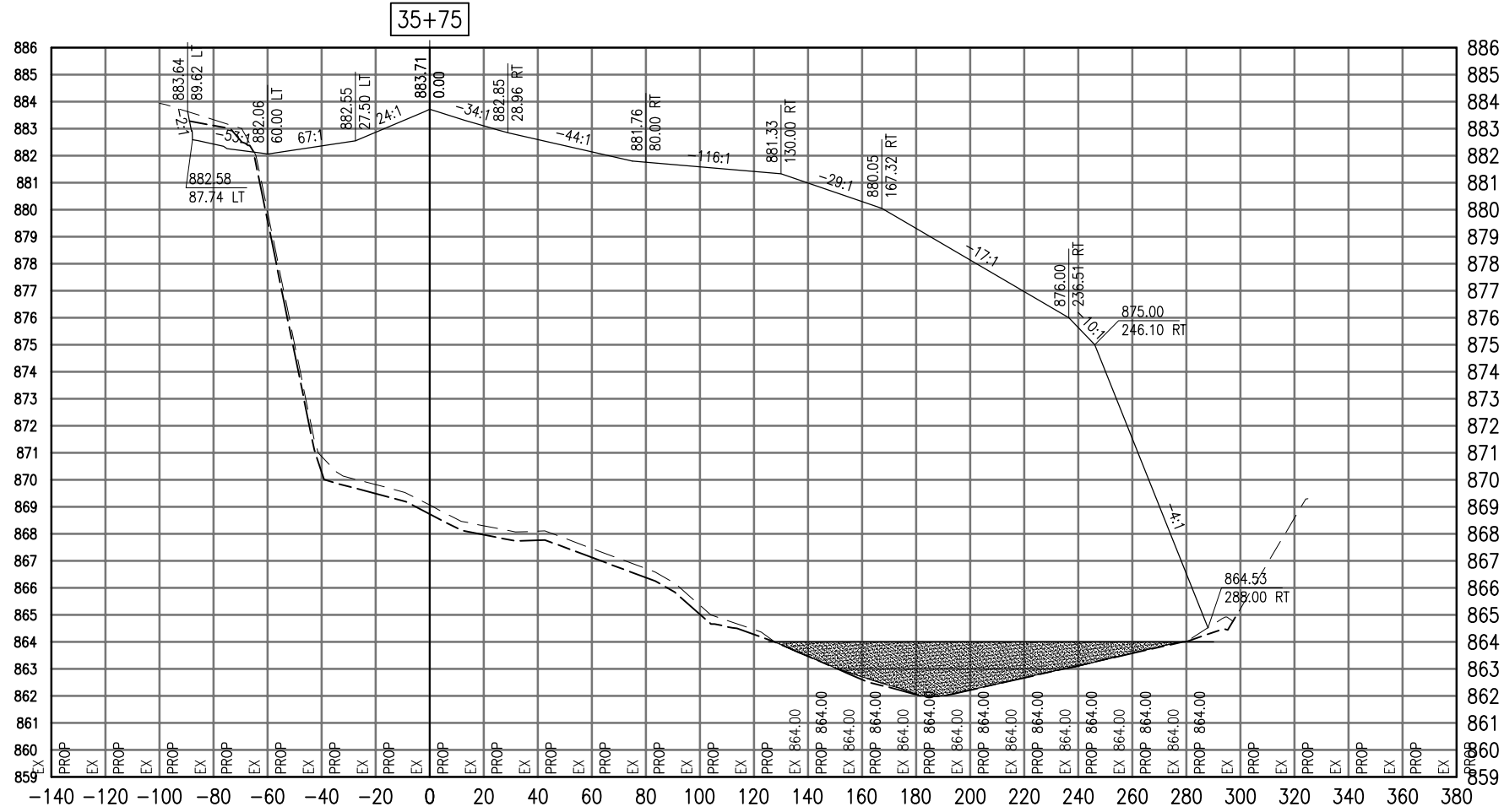
Hanson No.	08A0150
Filename	ACAD-SECTIONS_4A.DWG
Scale	1"=30'
Date	AUGUST 14, 2009

LAYOUT	SJM	08/13/09
DRAWN	BLB	08/13/09
REVIEWED	RMH	8/7/09

HANSON
 Copyright Hanson Professional Services Inc. 2009
Hanson Professional Services Inc.
 815 Commerce Drive Suite 200
 Oak Brook, Illinois 60523

CROSS SECTIONS
STA. 35+50
CONSTRUCT PARALLEL TAXIWAY A,
STAGE 1, GRADING AND DRAINAGE
 IDA No. 3CK-3877 AIP No. 3-17-0112-B12

SEE LEGEND, PAGE 17



Total Volume at Station 35+75.00	
Cut Area	34.42
Fill Area	4769.99
Cut Vol	30.02
Fill Vol	4627.53
Cum Cut Vol	44.11
Cum Fill Vol	7046.73
Net Vol	-7002.63

Material(s) at Station 35+75.00			
Material Name	Area	Volume	Cumulative Volume
Cut	75.20	62.87	90.92

VILLAGE OF
 LAKE IN THE HILLS
 600 Harvest Gate
 Lake in the Hills, Illinois 60156 Telephone:
 847.960.7410
 Fax: 847.960.7515



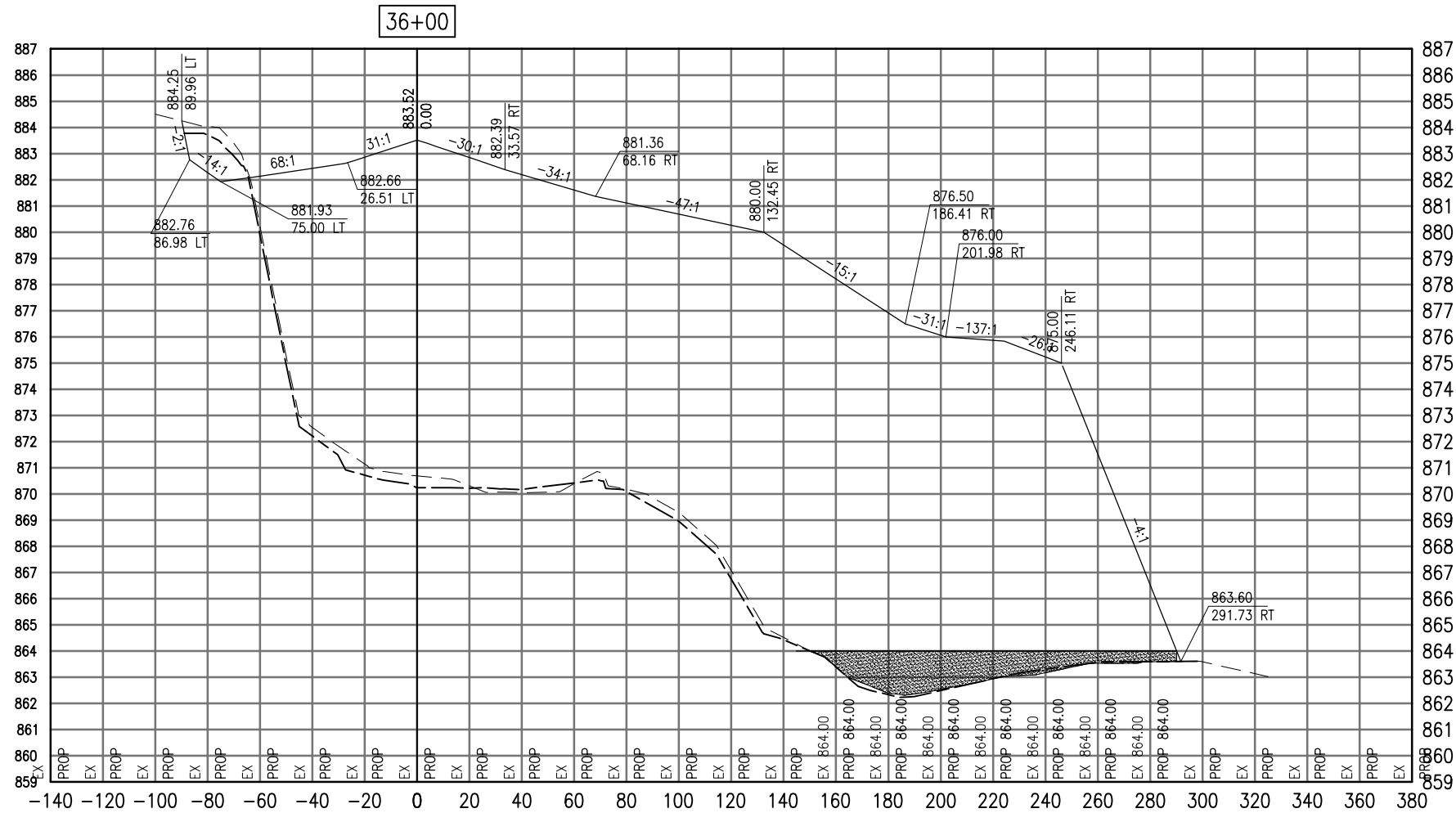
Hanson No.	08A0150
Filename	ACAD-SECTIONS_4A.DWG
Scale	1" = 30'
Date	AUGUST 14, 2009
LAYOUT	SJM 08/13/09
DRAWN	BLB 08/13/09
REVIEWED	RMH 8/7/09

HANSON
 Copyright Hanson Professional Services Inc. 2009
Hanson Professional Services Inc.
 815 Commerce Drive Suite 200
 Oak Brook, Illinois 60523

CROSS SECTIONS
 STA. 35+75
 CONSTRUCT PARALLEL TAXIWAY A,
 STAGE 1, GRADING AND DRAINAGE
 IDA No. 3CK-3877 AIP No. 3-17-0112-B12

DATE	09/03/09	REVISION	ADDENDUM 1

SEE LEGEND, PAGE 17



Total Volume at Station 36+00.00	
Cut Area	41.30
Fill Area	4012.07
Cut Vol	35.06
Fill Vol	4065.77
Cum Cut Vol	79.16
Cum Fill Vol	11112.50
Net Vol	-11033.34

Material(s) at Station 36+00.00			
Material Name	Area	Volume	Cumulative Volume
Cut	66.50	65.61	156.52

SEP 03, 2009 8:57 AM BLAIN01219 I:\08\085\00841\08A0150\PHASE 1\DRAWINGS\XREF\C3D_WORKING\SECTIONS\ACAD-SECTIONS_4A.DWG

DATE	REVISION
09/03/09	ADDENDUM 1

VILLAGE OF LAKE IN THE HILLS
 600 Harvest Gate
 Lake in the Hills, Illinois 60156 Telephone: 847.960.7410 Fax: 847.960.7515

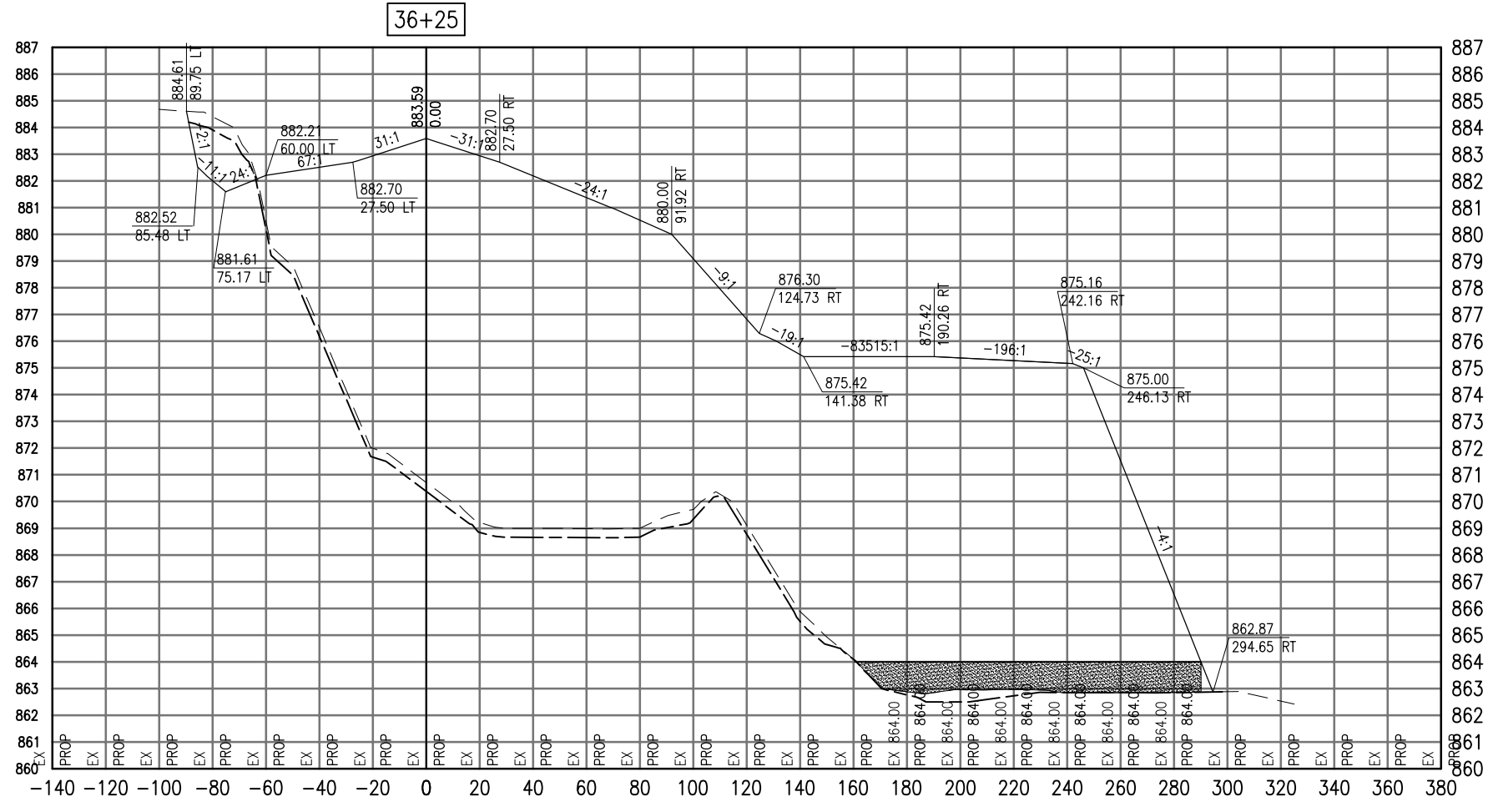


Revision No.	Revision Description	Date	Drawn	Reviewed
08A0150	ACAD-SECTIONS_4A.DWG	AUGUST 14, 2009	BLB	RMH

HANSON
 Copyright Hanson Professional Services Inc. 2009
Hanson Professional Services Inc.
 815 Commerce Drive Suite 200
 Oak Brook, Illinois 60523

CROSS SECTIONS
STA. 36+00
 CONSTRUCT PARALLEL TAXIWAY A,
 STAGE 1, GRADING AND DRAINAGE
 IDA No. 3CK-3877 AIP No. 3-17-0112-B12

SEE LEGEND, PAGE 17



Total Volume at Station 36+25.00	
Cut Area	48.95
Fill Area	3620.31
Cut Vol	41.78
Fill Vol	3533.51
Cum Cut Vol	120.94
Cum Fill Vol	14646.01
Net Vol	-14525.07

Material(s) at Station 36+25.00			
Material Name	Area	Volume	Cumulative Volume
Cut	100.27	77.21	233.74

DATE	REVISION
09/03/09	ADDENDUM 1

VILLAGE OF LAKE IN THE HILLS
 600 Harvest Gate
 Lake in the Hills, Illinois 60156 Telephone:
 847.960.7410
 Fax: 847.960.7515

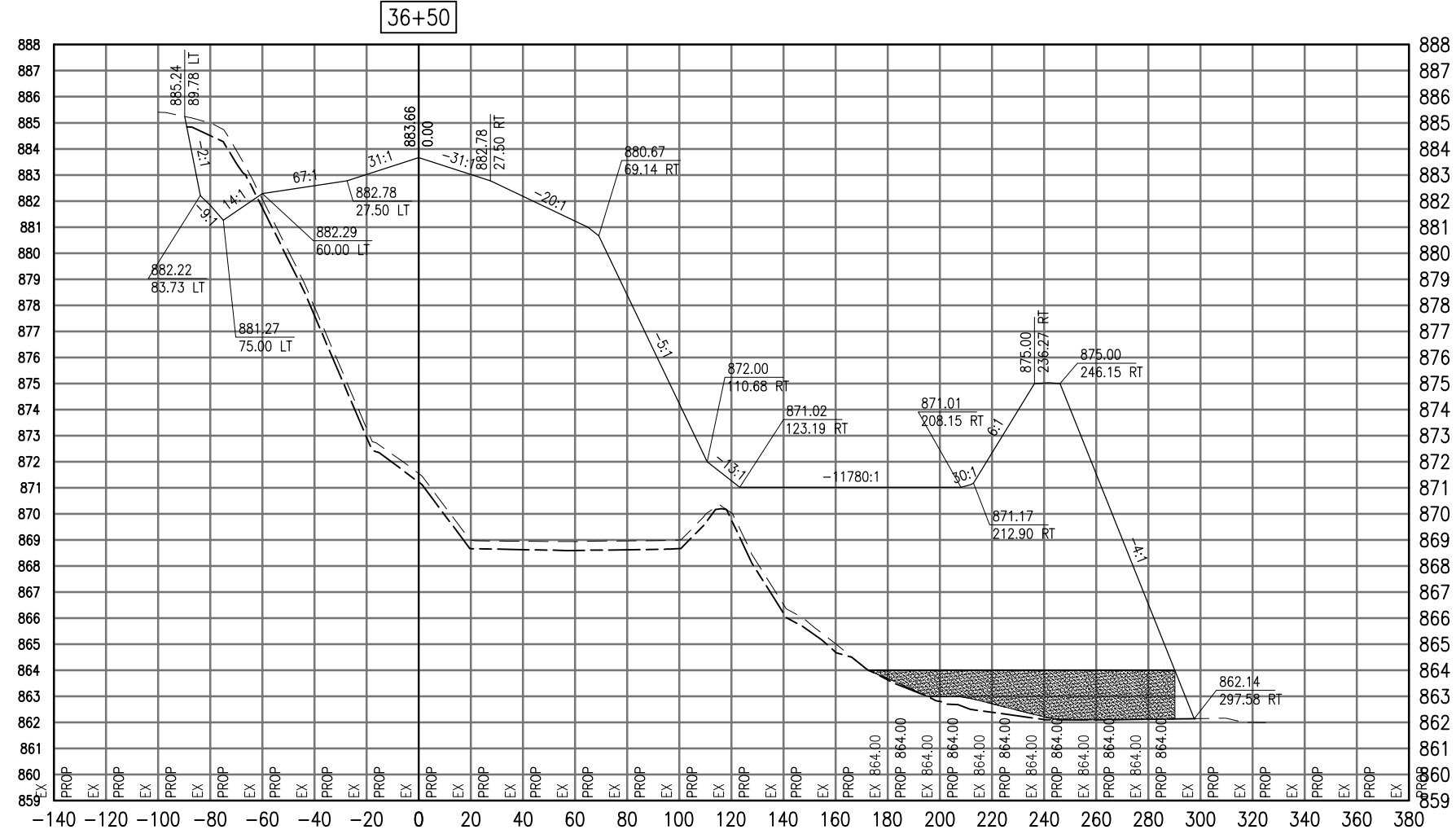


Hanson No.	08A0150	SJM	08/13/09
Filename	ACAD-SECTIONS_4A.DWG	BLB	08/13/09
Scale	1"=30'	RMH	8/7/09
Date	AUGUST 14, 2009		

HANSON
 Professional Services Inc. 2009
 Hanson Professional Services Inc.
 815 Commerce Drive Suite 200
 Oak Brook, Illinois 60523

CROSS SECTIONS
STA. 36+25
 CONSTRUCT PARALLEL TAXIWAY A,
 STAGE 1, GRADING AND DRAINAGE
 IDA No. 3CK-3877 AIP No. 3-17-0112-B12

SEE LEGEND, PAGE 17



Total Volume at Station 36+50.00	
Cut Area	62.40
Fill Area	2877.31
Cut Vol	51.55
Fill Vol	3008.16
Cum Cut Vol	172.49
Cum Fill Vol	17654.17
Net Vol	-17481.68

Material(s) at Station 36+50.00			
Material Name	Area	Volume	Cumulative Volume
Cut	96.86	91.27	325.00

DATE	REVISION
09/03/09	ADDENDUM 1

VILLAGE OF LAKE IN THE HILLS
 600 Harvest Gate
 Lake in the Hills, Illinois 60156 Telephone:
 847.960.7410
 Fax: 847.960.7515

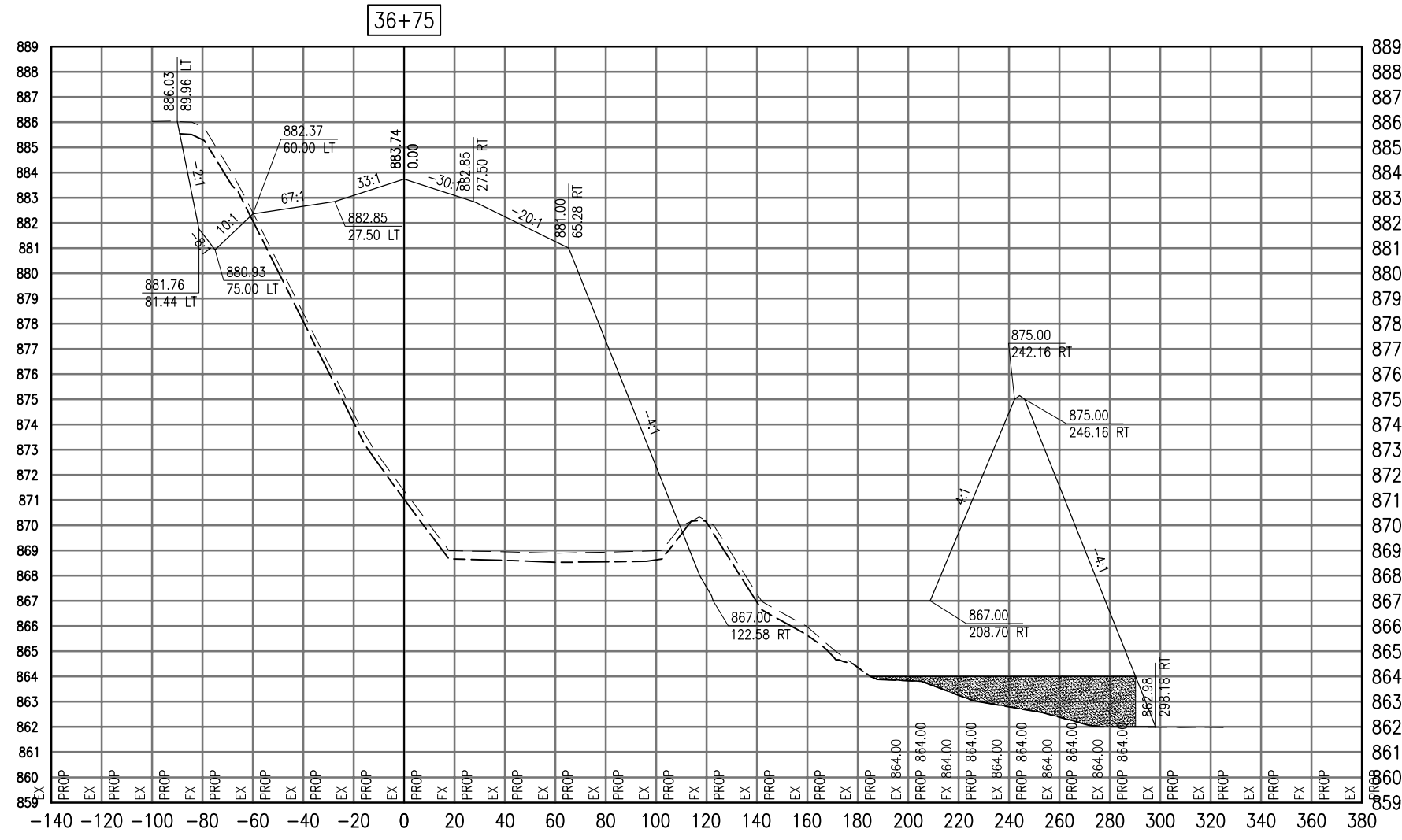


Hanson No.	08A0150	LAYOUT	SJM	08/13/09
Filename	ACAD-SECTIONS_4A.DWG	DRAWN	BLB	08/13/09
Scale	1"=30'	REVIEWED	RMH	8/7/09
Date	AUGUST 14, 2009			

HANSON
 Copyright Hanson Professional Services Inc. 2009
Hanson Professional Services Inc.
 815 Commerce Drive Suite 200
 Oak Brook, Illinois 60523

CROSS SECTIONS
STA. 36+50
 CONSTRUCT PARALLEL TAXWAY A,
 STAGE 1, GRADING AND DRAINAGE
 IDA No. 3CK-3877 AIP No. 3-17-0112-B12

SEE LEGEND, PAGE 17



36+75

Total Volume at Station 36+75.00	
Cut Area	129.38
Fill Area	2302.09
Cut Vol	88.79
Fill Vol	2397.87
Cum Cut Vol	261.28
Cum Fill Vol	20052.04
Net Vol	-19796.77

Material(s) at Station 36+75.00			
Material Name	Area	Volume	Cumulative Volume
Cut	91.29	87.11	412.11

SEP 03, 2009 8:57 AM BLAIN01219
I:\08\085\00841\08A0150\PHASE 1\DRAWINGS\XREF\C3D_WORKING\SECTIONS\ACAD-SECTIONS_4A.DWG

DATE	REVISION
09/03/09	ADDENDUM 1

VILLAGE OF LAKE IN THE HILLS
600 Harvest Gate
Lake in the Hills, Illinois 60156 Telephone:
847.960.7410
Fax: 847.960.7515

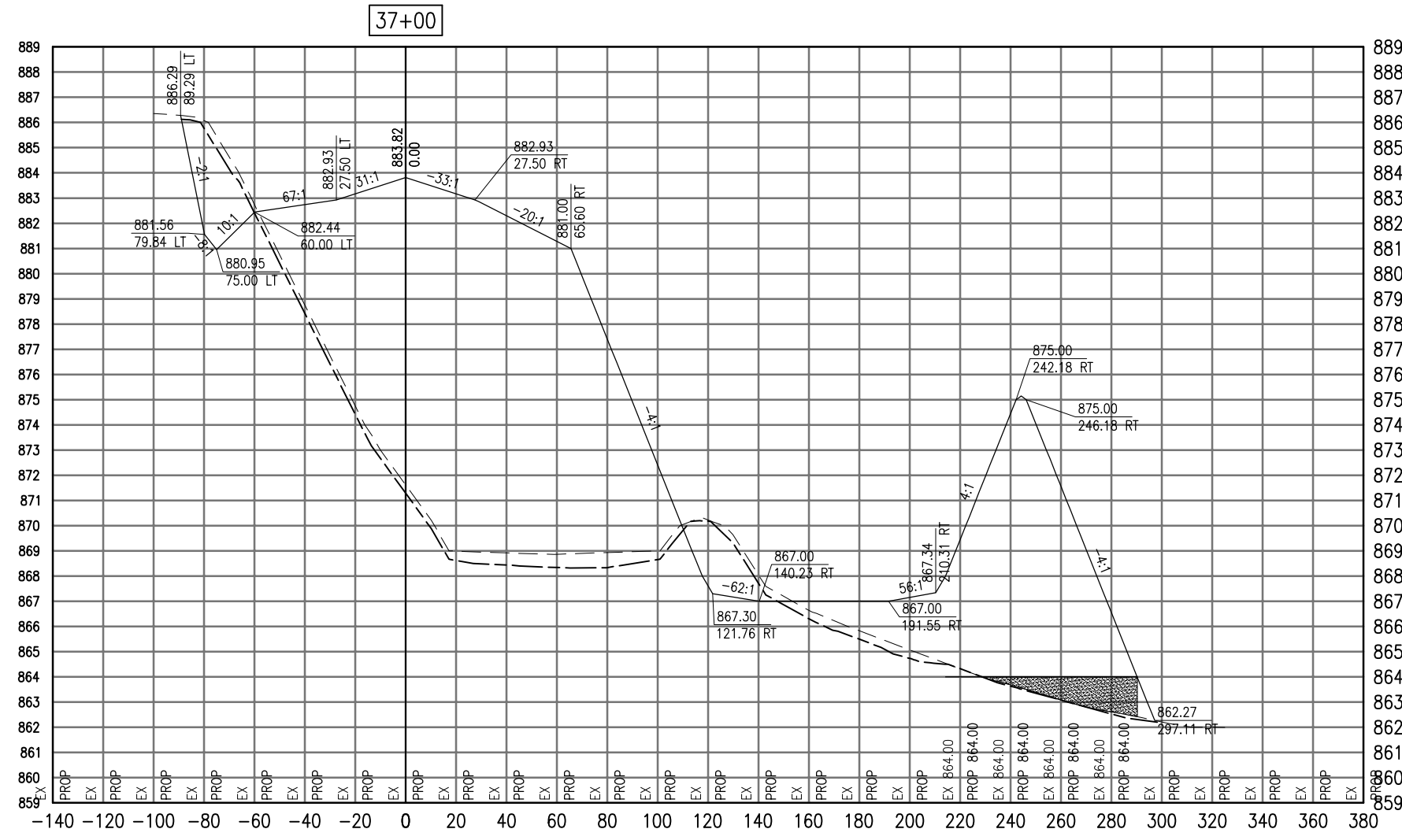


Hanson No.	08A0150
Filename	ACAD-SECTIONS_4A.DWG
Scale	1"=30'
Date	AUGUST 14, 2009

HANSON
©Copyright Hanson Professional Services Inc. 2009
Hanson Professional Services Inc.
815 Commerce Drive Suite 200
Oak Brook, Illinois 60523

CROSS SECTIONS
STA. 36+75
CONSTRUCT PARALLEL TAXIWAY A,
STAGE 1, GRADING AND DRAINAGE
IDA No. 3CK-3877 AIP No. 3-17-0112-B12

SEE LEGEND, PAGE 17



37+00

Total Volume at Station 37+00.00	
Cut Area	146.68
Fill Area	2157.61
Cut Vol	127.80
Fill Vol	2064.67
Cum Cut Vol	389.08
Cum Fill Vol	2216.72
Net Vol	-21727.64

Material(s) at Station 37+00.00			
Material Name	Area	Volume	Cumulative Volume
Cut	114.31	95.19	507.30

DATE	REVISION
09/03/09	ADDENDUM 1

VILLAGE OF LAKE IN THE HILLS
 600 Harvest Gate
 Lake in the Hills, Illinois 60156 Telephone: 847.960.7410
 Fax: 847.960.7515



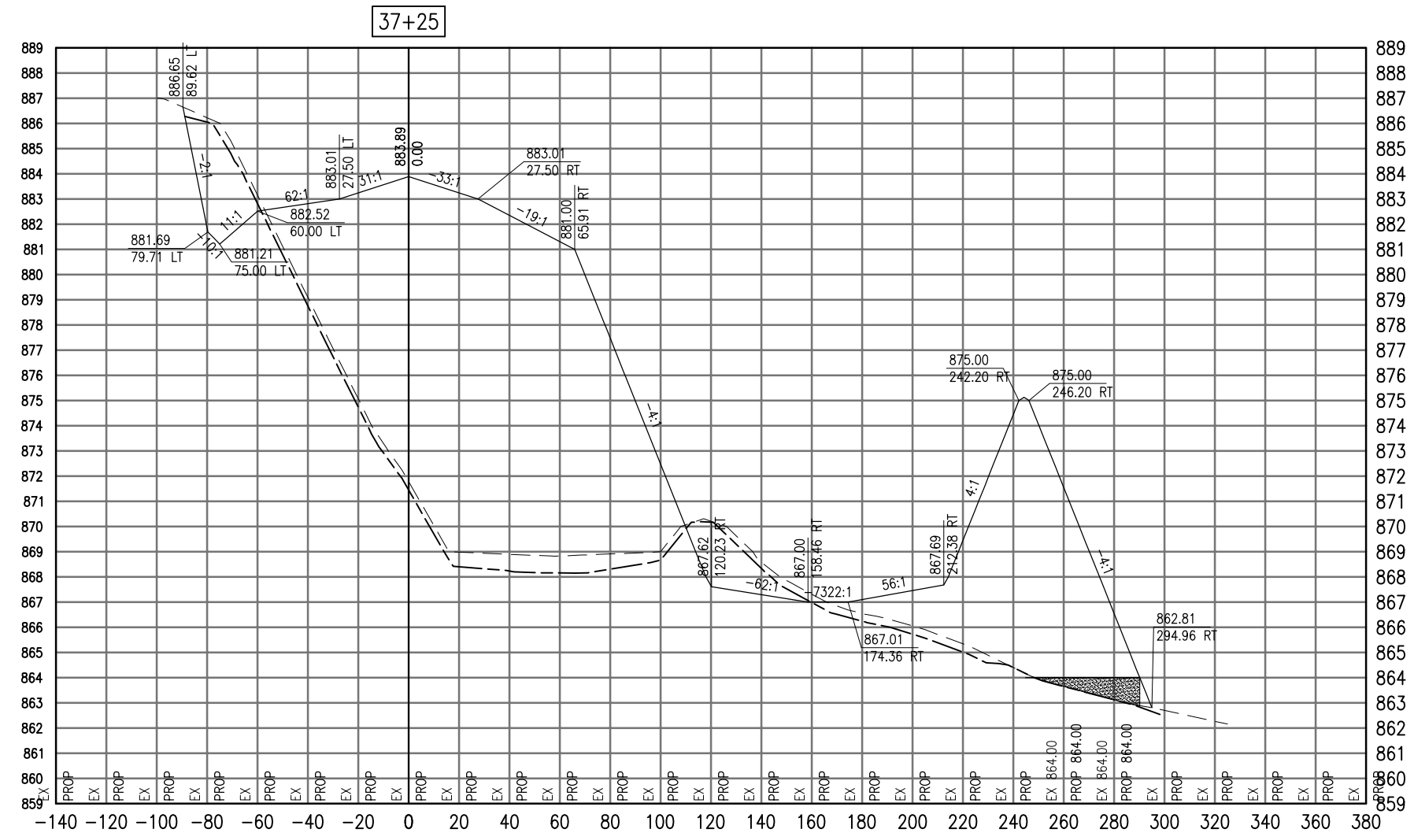
Hanson No.	08A0150
Filename	ACAD-SECTIONS_4A.DWG
Scale	1"=30'
Date	AUGUST 14, 2009
LAYOUT	SJM 08/13/09
DRAWN	BLB 08/13/09
REVIEWED	RMH 8/7/09

HANSON
 Copyright Hanson Professional Services Inc. 2009
Hanson Professional Services Inc.
 815 Commerce Drive Suite 200
 Oak Brook, Illinois 60523

CROSS SECTIONS
 STA. 37+00
 CONSTRUCT PARALLEL TAXWAY A,
 STAGE 1, GRADING AND DRAINAGE
 IDA No. 3CK-3877 AIP No. 3-17-0112-B12

SEE LEGEND, PAGE 17

SEP 03, 2009 8:57 AM BLAIN01219
I:\08\085\00841\08A0150\PHASE 1\DRAWINGS\XREF\C3D_WORKING\SECTIONS\ACAD-SECTIONS_4A.DWG



Total Volume at Station 37+25.00	
Cut Area	161.06
Fill Area	2060.75
Cut Vol	142.47
Fill Vol	1952.95
Cum Cut Vol	531.55
Cum Fill Vol	24069.66
Net Vol	-23538.11

Material(s) at Station 37+25.00			
Material Name	Area	Volume	Cumulative Volume
Cut	127.47	111.93	619.23

DATE	REVISION
09/03/09	ADDENDUM 1

VILLAGE OF LAKE IN THE HILLS
 600 Harvest Gate
 Lake in the Hills, Illinois 60156 Telephone:
 847.960.7410
 Fax: 847.960.7515



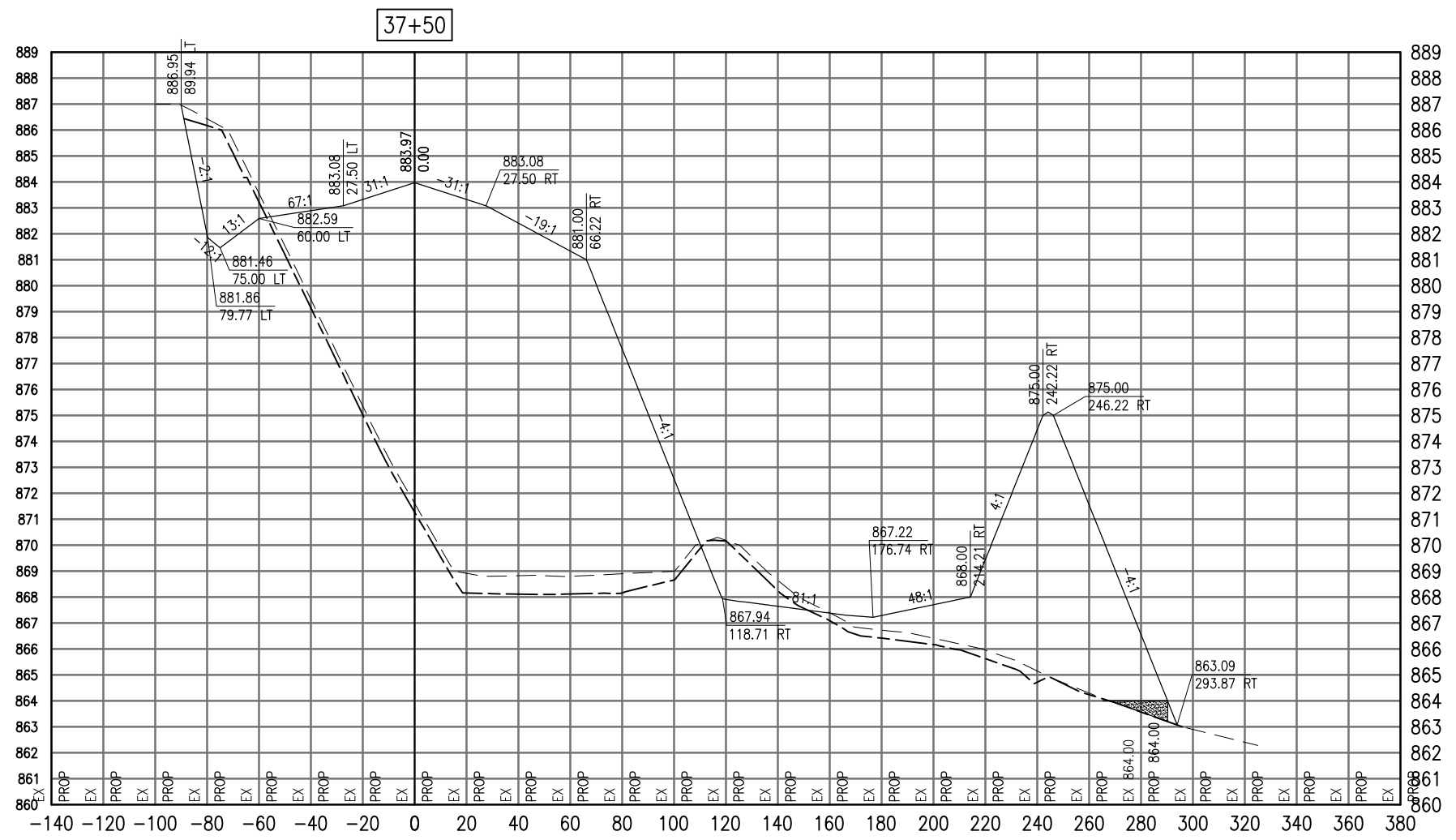
Hanson No.	08A0150
Filename	ACAD-SECTIONS_4A.DWG
Scale	1" = 30'
Date	AUGUST 14, 2009

LAYOUT	SJM	08/13/09
DRAWN	BLB	08/13/09
REVIEWED	RMH	8/7/09

HANSON
 Copyright Hanson Professional Services Inc. 2009
Hanson Professional Services Inc.
 815 Commerce Drive Suite 200
 Oak Brook, Illinois 60523

CROSS SECTIONS
 STA. 37+25
 CONSTRUCT PARALLEL TAXIWAY A,
 STAGE 1, GRADING AND DRAINAGE
 IDA No. 3CK-3877 AIP No. 3-17-0112-B12

SEE LEGEND, PAGE 17



Total Volume at Station 37+50.00	
Cut Area	151.70
Fill Area	2014.99
Cut Vol	144.79
Fill Vol	1886.92
Cum Cut Vol	676.34
Cum Fill Vol	25956.58
Net Vol	-25280.23

Material(s) at Station 37+50.00			
Material Name	Area	Volume	Cumulative Volume
Cut	135.38	121.69	740.92

SEP 03, 2009 8:57 AM BLAIN01219
 I:\08\085\00841\08A0150\PHASE 1\DRAWINGS\XREF\C3D_WORKING\SECTIONS\ACAD-SECTIONS_4A.DWG

DATE	REVISION
09/03/09	ADDENDUM 1

VILLAGE OF LAKE IN THE HILLS
 600 Harvest Gate
 Lake in the Hills, Illinois 60156 Telephone:
 847.960.7410
 Fax: 847.960.7515

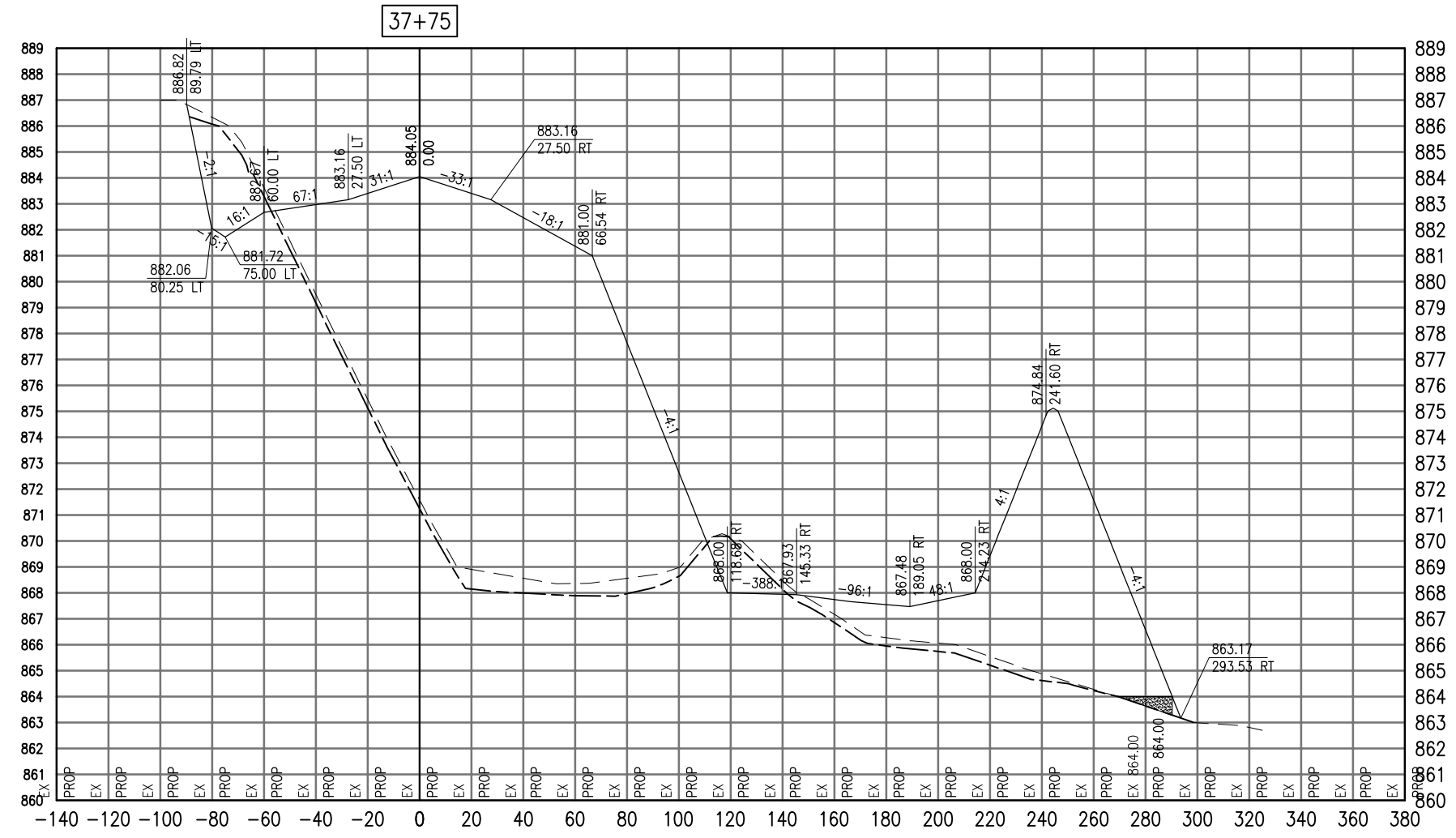


Hanson No.	08A0150
Filename	ACAD-SECTIONS_4A.DWG
Scale	1"=30'
Date	AUGUST 14, 2009
LAYOUT	SJM 08/13/09
DRAWN	BLB 08/13/09
REVIEWED	RMH 8/7/09

HANSON
 Copyright Hanson Professional Services Inc. 2009
Hanson Professional Services Inc.
 815 Commerce Drive Suite 200
 Oak Brook, Illinois 60523

CROSS SECTIONS
STA. 37+50
CONSTRUCT PARALLEL TAXIWAY A,
STAGE 1, GRADING AND DRAINAGE
 IDA No. 3CK-3877 AIP No. 3-17-0112-B12

SEE LEGEND, PAGE 17



37+75

Total Volume at Station 37+75.00	
Cut Area	133.59
Fill Area	2090.99
Cut Vol	132.08
Fill Vol	1900.91
Cum Cut Vol	808.42
Cum Fill Vol	27857.49
Net Vol	-27049.07

Material(s) at Station 37+75.00			
Material Name	Area	Volume	Cumulative Volume
Cut	128.67	122.25	863.16

DATE	REVISION
09/03/09	ADDENDUM 1

VILLAGE OF LAKE IN THE HILLS
 600 Harvest Gate
 Lake in the Hills, Illinois 60156 Telephone: 847.960.7410
 Fax: 847.960.7515



Hanson No.	08A0150
Filename	ACAD-SECTIONS_4A.DWG
Scale	1"=30'
Date	AUGUST 14, 2009

HANSON
 Copyright Hanson Professional Services Inc. 2009
Hanson Professional Services Inc.
 815 Commerce Drive Suite 200
 Oak Brook, Illinois 60523

CROSS SECTIONS
 STA. 37+75
 CONSTRUCT PARALLEL TAXIWAY A,
 STAGE 1, GRADING AND DRAINAGE
 IDA No. 3CK-3877 AIP No. 3-17-0112-B12