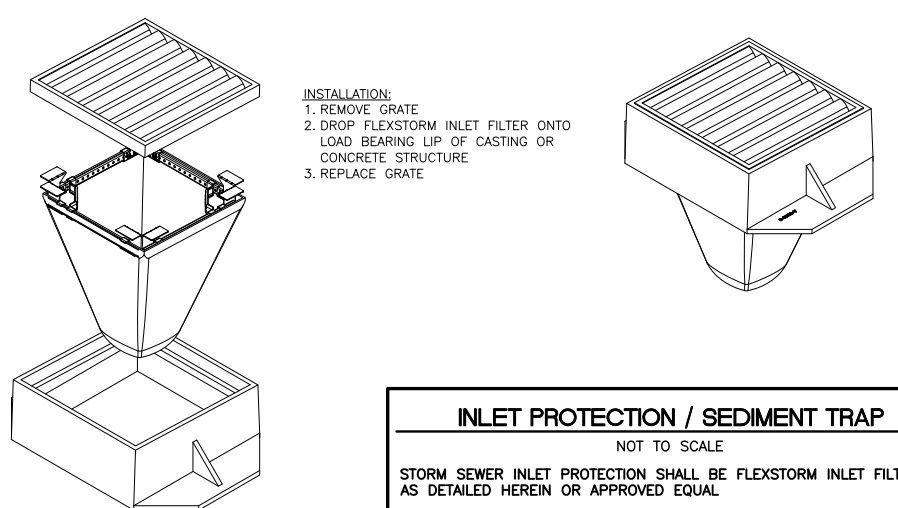
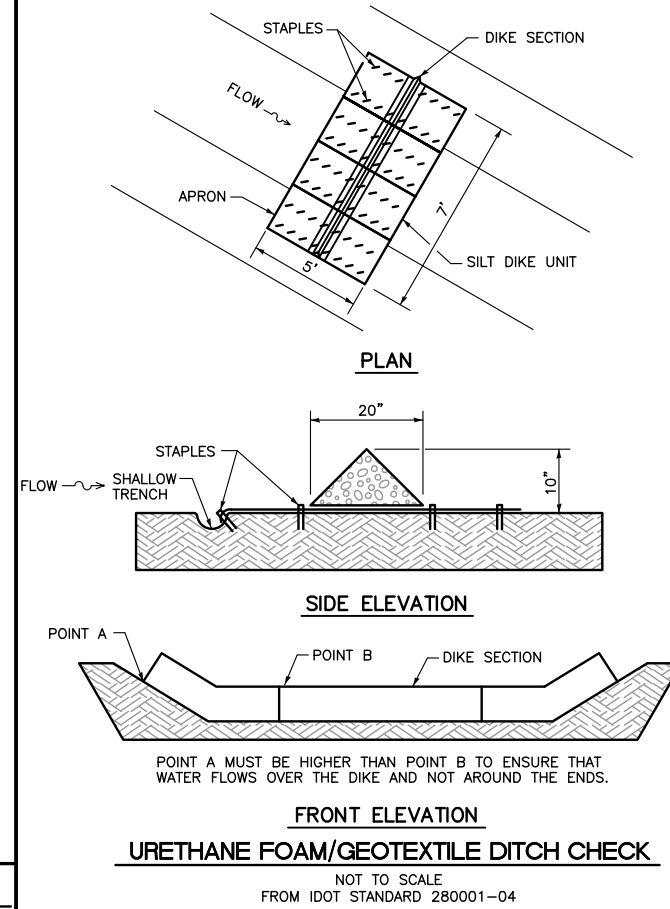


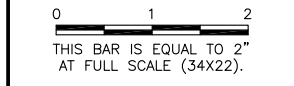
IPP Flexstorm Inlet Filter Specifications		
Material Property	Test Method	Value (min ave)
> Inner Filter Bag Specs (2 ft³ min vol)		
Grab Tensile	ASTM D 4632	100 lbs 200 lbs
Puncture Strength	ASTM D 4833	65 lbs 90 lbs
Trapezoidal Tear	ASTM D 4533	45 lbs 75 lbs
UV Resistance	ASTM D 4355	70% at 500 hrs 90%
App Open Size (AOS)	ASTM D 4751	70 sieve (.212 mm) 40 sieve (.425 mm)
Permittivity	ASTM D 4491	2.0 /sec 2.1/sec
Water Flow Rate	ASTM D 4491	145 gpm/sqft 145 gpm/sqft
> Polyester Outer Reinforcement Bag Specifications		
Weight	ASTM D 3776	4.55 oz/sqyd +/- 15%
Thickness	ASTM D 1777	.040 +/- .005
> Frame Construction		
A36 Structural Steel; 11 Gauge; Zinc Plated	ASTM A 576	Tensile Strength > 58,000 psi; Yield Strength > 36,000 psi



INLET PROTECTION / SEDIMENT TRAP
 NOT TO SCALE
 STORM SEWER INLET PROTECTION SHALL BE FLEXSTORM INLET FILTERS AS DETAILED HEREIN OR APPROVED EQUAL

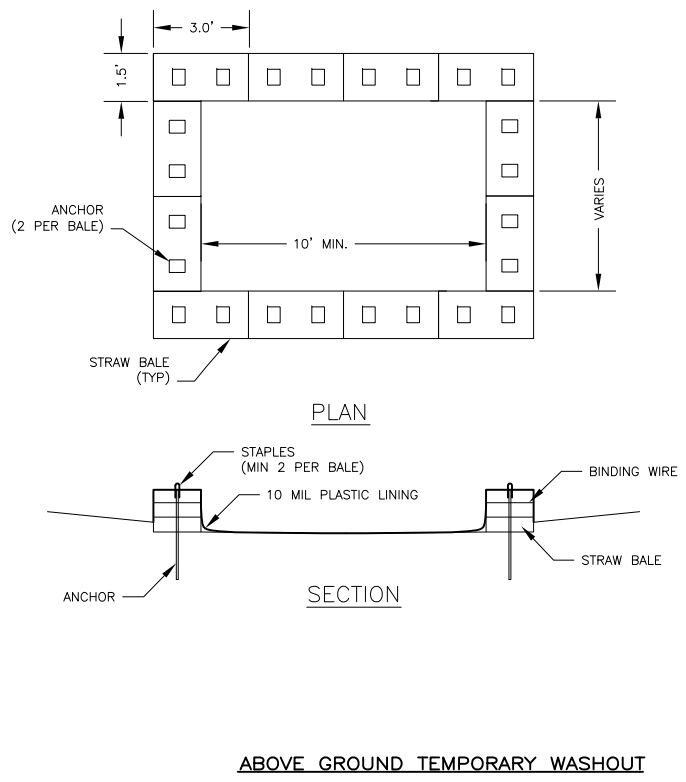
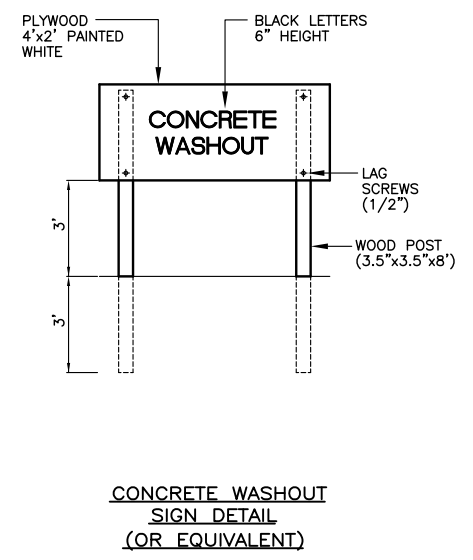


REVISIONS		
NUMBER	BY	DATE

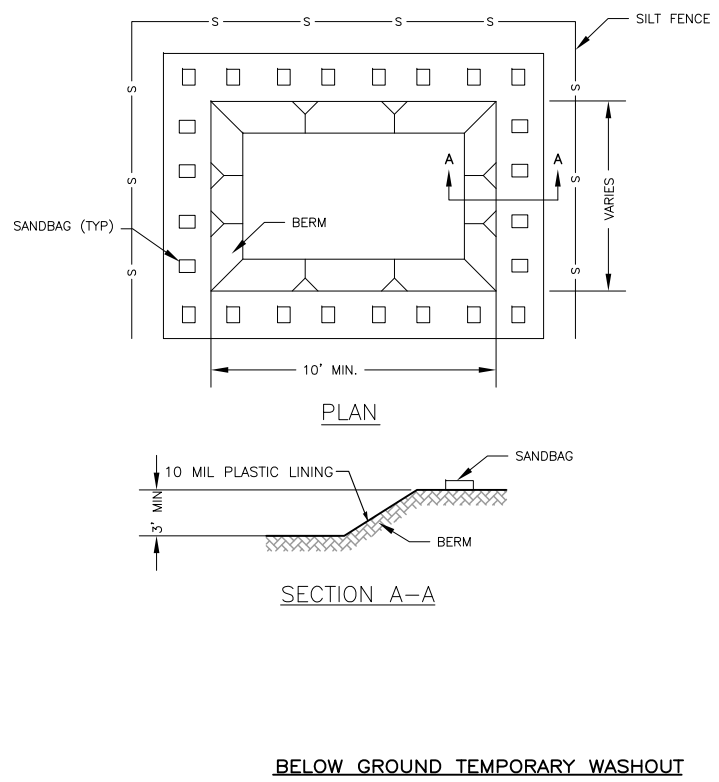


**CHICAGO EXECUTIVE AIRPORT
 WHEELING/PROSPECT HEIGHTS, ILLINOIS
 CONSTRUCT SOUTHEAST QUADRANT APRON**

**STORM WATER POLLUTION
 PREVENTION PLAN (SWPPP)
 DETAILS**



- NOTES:**
- CONTRACTOR SHALL DETERMINE LOCATION AND SIZE OF WASHOUT.
 - WASHOUT SIZE AND LOCATION SHALL BE APPROVED BY THE ENGINEER.
 - A CONCRETE WASHOUT SIGN SHALL BE INSTALLED WITHIN 20 FEET OF THE TEMPORARY CONCRETE WASHOUT FACILITY. AT A MINIMUM, THE SIGN SHALL READ "CONCRETE WASHOUT" IN 6" TALL LETTERS.
 - INSPECTION SHALL OCCUR ONCE PER WEEK AND DAILY DURING CONCRETE OPERATIONS. REPAIR/REPLACEMENT OF THE FACILITY SHALL BE MADE SUCH THAT CONCRETE WASTE IS CONTAINED.
 - MEDIA SHALL BE REMOVED AND DISPOSED OF AT A LEGAL OFF-SITE LOCATION WHEN THE FACILITY HAS REACHED 50% CAPACITY.
 - UPON COMPLETION OF CONCRETE OPERATIONS, THE CONCRETE WASHOUT AND ALL MATERIALS CONTAINED WITHIN SHALL BE DISPOSED OF AT A LEGAL OFF-SITE LOCATION.



- NOTES:**
- CONTRACTOR SHALL DETERMINE LOCATION AND SIZE OF WASHOUT.
 - WASHOUT SIZE AND LOCATION SHALL BE APPROVED BY THE ENGINEER.
 - SANDBAGS SHALL BE INSTALLED TO ANCHOR THE LINING. THE NUMBER OF SANDBAGS SHALL BE DETERMINED BY THE CONTRACTOR. THE CONTRACTOR SHALL ADD SANDBAGS SO AS TO MAINTAIN ANCHORING OF THE LINING.
 - A CONCRETE WASHOUT SIGN SHALL BE INSTALLED WITHIN 20 FEET OF THE TEMPORARY CONCRETE WASHOUT FACILITY. AT A MINIMUM, THE SIGN SHALL READ "CONCRETE WASHOUT" IN 6" TALL LETTERS.
 - THE TEMPORARY WASHOUT FACILITY SHALL BE SURROUNDED BY SILT FENCE ON ALL SIDES.
 - INSPECTION SHALL OCCUR ONCE PER WEEK AND DAILY DURING CONCRETE OPERATIONS. REPAIR/REPLACEMENT OF THE FACILITY SHALL BE MADE SUCH THAT CONCRETE WASTE IS CONTAINED.
 - MEDIA SHALL BE REMOVED AND DISPOSED OF AT A LEGAL OFF-SITE LOCATION WHEN THE FACILITY HAS REACHED 50% CAPACITY.
 - UPON COMPLETION OF CONCRETE OPERATIONS, THE CONCRETE WASHOUT AND ALL MATERIALS CONTAINED WITHIN SHALL BE DISPOSED OF AT A LEGAL OFF-SITE LOCATION.

CONCRETE WASHOUT
 NOT TO SCALE

© Copyright CMT, Inc.

CMT
 CRAWFORD, MURPHY & TILLY, INC.
 CONSULTING ENGINEERS
 License No. 184-000613

CHICAGO EXECUTIVE AIRPORT

DESIGN BY:	MJW
DRAWN BY:	MJW
CHECKED BY:	
APPROVED BY:	
DATE:	07/24/09
JOB No:	09290-04
ILLINOIS PROJECT: PWK-3581 A.I.P. PROJECT: 3-17-0018-B37	
SHEET	9 OF 35 SHEETS