

INDEX OF SHEETS 09-18-2020 LETTING ITEM 020

1. COVER SHEET
2. GENERAL NOTES
3. SUMMARY OF QUANTITIES
4. TYPICAL ROADWAY SECTIONS
5. SCHEDULES
- 6 - 7. EXISTING PLAN DETAILS: LOATION #1
INTERSECTION OF US 6 AND COUNTY LINE RD. (DALZELL RD.)
- 8 - 9. EXISTING PLAN DETAILS: LOATION #2
INTERSECTION IL 38 AND MALTA RD. (KISHWAUKEE COLLEGE).
- 10 - 11. EXISTING PLAN DETAILS: LOATION #3
INTERSECTION OF IL 38 AND SOMONAUK RD. (CORTLAND).
- 12 - 13. EXISTING PLAN DETAILS: LOATION #4
INTERSECTION OF IL 38 AND COUNTY LINE RD. (MAPLE PARK).

STANDARDS

000001-07	STANDARD SYMBOLS, ABBREVIATIONS AND PATTERNS
701001-02	OFF-ROAD OPERATIONS 2L, 2W, MORE THAN 15' (4.5 m) AWAY
701006-05	OFF-ROAD OPERATIONS 2L, 2W, 15' (4.5 m) TO 24" (600 mm) FROM PAVEMENT EDGE
701201-05	LANE CLOSURE, 2L, 2W, DAY ONLY, FOR SPEEDS ≥ 45 MPH
701301-04	LANE CLOSURE, 2L, 2W, SHORT TIME OPERATIONS
701701-10	URBAN LANE CLOSURE, MULTILANE INTERSECTION
701801-06	SIDEWALK, CORNER OR CROSSWALK CLOSURE
701901-08	TRAFFIC CONTROL DEVICES
852001-01	UNINTERRUPTABLE POWER SUPPLY, (UPS)

STATE OF ILLINOIS
DEPARTMENT OF TRANSPORTATION

**PROPOSED
HIGHWAY PLANS**

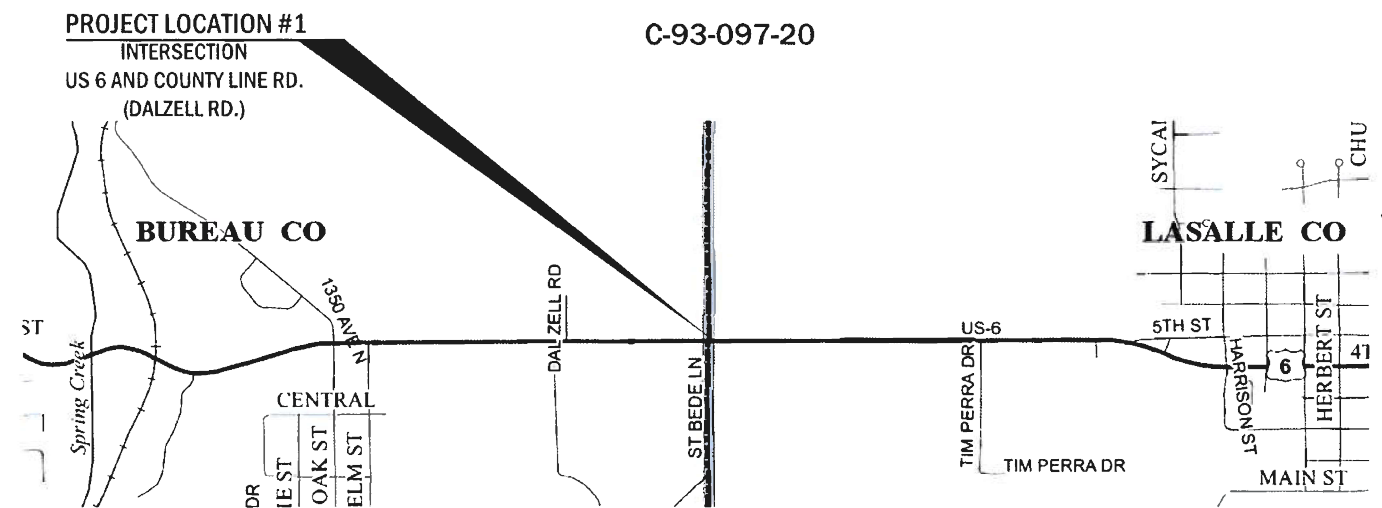
**F.A.U. 6088 (US 6) & F.A.P. 567 (IL 38)
SECTION (33) ELE & (331,332)ELE
REMOVE & REPLACE TRAFFIC SIGNAL CONTROLLER CABINETS
BUREAU & DEKALB**

F.A.U. & F.A.P. RITE	SECTION	COUNTY	TOTAL SHEETS	SHEET NO.
6088 & 567	(33)ELE & (331,332)ELE	BUREAU & DEKALB	13	1
CONTRACT NO. 66L11				

D-93-062-20



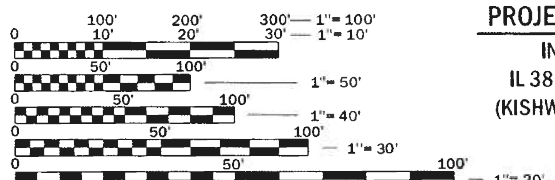
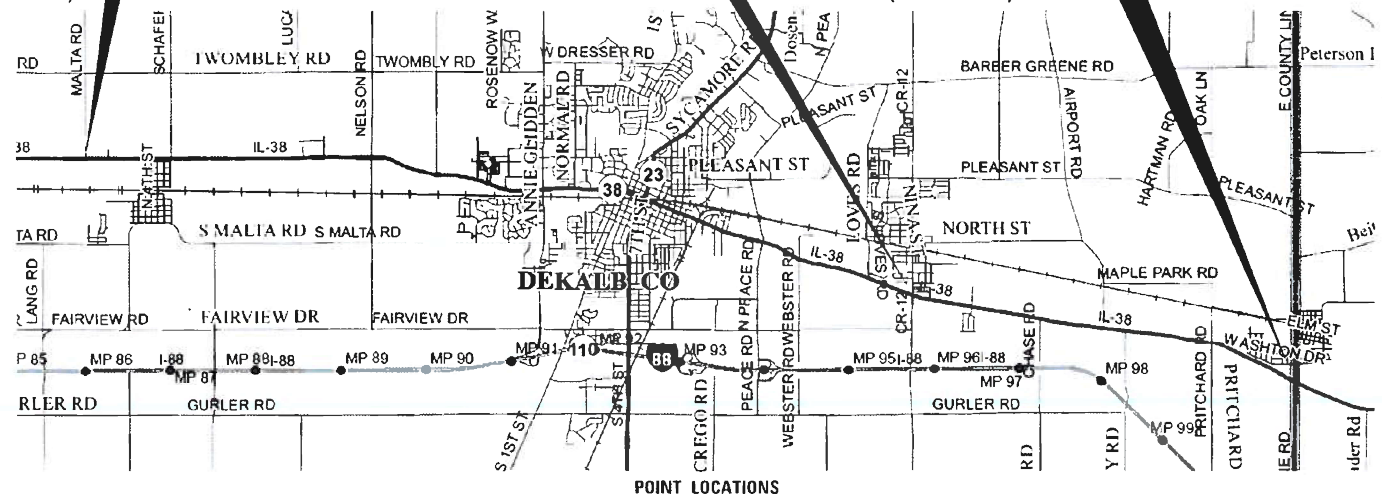
LOCATION OF SECTION INDICATED THUS: - [Black Box] -



PROJECT LOCATION #2
INTERSECTION
IL 38 AND MALTA RD.
(KISHWAUKEE COLLEGE)

PROJECT LOCATION #3
INTERSECTION
IL 38 AND SOMONAUK RD.
(CORTLAND)

PROJECT LOCATION #4
INTERSECTION
IL 38 AND COUNTY LINE RD.
(MAPLE PARK)



FULL SIZE PLANS HAVE BEEN PREPARED USING STANDARD ENGINEERING SCALES. REDUCED SIZED PLANS WILL NOT CONFORM TO STANDARD SCALES. IN MAKING MEASUREMENTS ON REDUCED PLANS, THE ABOVE SCALES MAY BE USED.

J.U.L.I.E.
JOINT UTILITY LOCATION INFORMATION FOR EXCAVATION
1-800-892-0123
OR 811

PROJECT ENGINEER JOE KANNEL P.E.
UNIT CHIEF RON WOODSHANK
DISTRICT 3 NO. (815) 434-6131
CONTRACT NO. 66L11

LOCATION NO. 1	LOCATION NO. 2	LOCATION NO. 3	LOCATION NO. 4
URBAN	URBAN	URBAN	RURAL
OTHER ARTERIAL	OTHER ARTERIAL	MINOR ARTERIAL	MINOR ARTERIAL
F.A.U. ROUTE 6088 (US 6)	F.A.P. ROUTE 567 (IL 38)	F.A.P. ROUTE 567 (IL 38)	F.A.P. ROUTE 567 (IL 38)
LASALLE COUNTY	DEKALB COUNTY	DEKALB COUNTY	DEKALB COUNTY
2019 ADT = 11,350	2019 ADT = 7,750	2019 ADT = 10,400	2019 ADT = 8,050
P.V. 93.4%	P.V. 93.4%	P.V. 93.4%	P.V. 93.4%
S.U. 3.3%	S.U. 7.0%	S.U. 4.3%	S.U. 3.4%
M.U. 3.3%	M.U. 4.2%	M.U. 5.3%	M.U. 5.0%

STATE OF ILLINOIS
DEPARTMENT OF TRANSPORTATION

SUBMITTED July 07, 2020

[Signature]
REGIONAL ENGINEER

August 14, 2020

[Signature]
ENGINEER OF DESIGN AND ENVIRONMENT

August 14, 2020

[Signature]
DIRECTOR OF HIGHWAYS PROJECT IMPLEMENTATION

**PRINTED BY THE AUTHORITY
OF THE STATE OF ILLINOIS**

TRAFFIC SIGNAL GENERAL NOTES

1. THE TRAFFIC SIGNAL SECTION AT THE ILLINOIS DEPARTMENT OF TRANSPORTATION, DISTRICT 3, SHALL BE NOTIFIED AT 815-434-8506 AT LEAST 72 HOURS PRIOR TO TURNING ON ANY FLASHER OR CONTROLLER UNITS.
2. THE CONTRACTOR SHALL BE RESPONSIBLE FOR PROTECTING UTILITY PROPERTY DURING CONSTRUCTION OPERATIONS AS OUTLINED IN ARTICLE 107.31 OF THE STANDARD SPECIFICATIONS. A MINIMUM OF 48 HOURS ADVANCE NOTICE IS REQUIRED FOR NON-EMERGENCY WORK. THE JULIE NUMBER IS 800-892-0123.
3. ALL TRAFFIC CONTROL AND OTHER ADVISORY SIGNS NEEDED FOR CONSTRUCTION ARE TO BE FURNISHED BY THE CONTRACTOR IN ACCORDANCE WITH SECTION 701 OF THE STANDARD SPECIFICATIONS.
4. THE CONTRACTOR SHALL ARRANGE FOR A FACTORY OR SUPPLIER REPRESENTATIVE TO BE PRESENT AT THE INTERSECTION WHEN THE SIGNAL IS TURNED ON. COST TO BE INCLUDED WITH THE TRAFFIC SIGNAL CONTROLLER PAY ITEM.
5. ALL THREADS OF BOLTS USED IN THE ASSEMBLY OF TRAFFIC SIGNAL COMPONENTS SHALL BE COATED WITH A NON-LEAD BASED ANTI-SEIZE COMPOUND, SIMILAR TO LEAD PLATE, PRIOR TO ASSEMBLY.
6. ALL HARDWARE SHALL BE TIGHTENED AND WELL SECURED, CABLES SHALL BE NEATLY WOUND IN HANDHOLES. CABLES SHALL BE NEATLY TRAINED IN THE CONTROLLER CABINET.
7. ALL TRAFFIC SIGNAL WIRING SHALL EXTEND FROM CONTROLLER TO SIGNAL. SPLICES IN JUNCTION BOXES WILL NOT BE ALLOWED.
8. THE CONTROLLER CABINET SHALL BE PLACED SO THAT A TECHNICIAN MAY SEE THE INTERSECTION OVER THE TOP OF THE CABINET WHILE WATCHING THE COMPONENTS IN THE CABINET.
- 9 THE PROPOSED TRAFFIC SIGNAL CONTROLLER CABINET SHALL BE FURNISHED WITH A MANUAL CONTROL SWITCH AND MANUAL CONTROL CHORD WITHIN THE POLICE DOOR COMPARTMENT. THIS WORK SHALL BE INCLUDED IN THE CONTROLLER CABINET PAY ITEM.
10. THE CONTRACTOR SHALL PROVIDE A SELF-ADHERED PHASE DIAGRAM ON THE INSIDE OF THE CONTROLLER CABINET DOOR. GUARD MONITORS.
11. ALL AREAS DISTURBED BY THE CONTRACTOR SHALL BE RESTORED WITH SEED OR SOD TO THE SATISFACTION OF THE ENGINEER. SEEDING OR SODDING SHALL NOT BE PERMITTED AT ANY TIME WHEN THE GROUND IS FROZEN, WET, OR IN AN UNTILLABLE CONDITION.
12. STATE OWNED UTILITIES THAT ARE NOT PART OF J.U.L.I.E. WILL NEED TO BE RELOCATED.
13. AT THE INTERSECTIONS OF IL 38 WITH MALTA RD., SOMONAUK RD. AND COUNTY LINE RD. INCLUDE THE WIRING IN THE FULL ACTUATED CONTROLL ANF TYPE 4 CABINET NEEDED TO ACTIVATE THE EXISTING YELLOW FLASHERS AS SHOWN ON RESPECTIVE CABLE PLANS.

GENERAL NOTES

1. SEEDING WILL NOT BE PERMITTED AT ANY TIME WHEN THE GROUND IS FROZEN, WET, OR IN AN UNTILLABLE CONDITION. LOCATIONS TO BE SEEDED WILL BE DETERMINED BY THE ENGINEER.
2. ALL EXCAVATED MATERIAL, WHICH INCLUDES DIGGING OR GRADING OF ANY SOIL OR FILL MATERIAL, WITH THE EXCEPTION OF AGGREGATE FILLS, MUST BE INCORPORATED WITHIN THE IDOT RIGHT OF WAY DUE TO ENVIRONMENTAL DOCUMENTATION REQUIREMENTS.
3. ABANDONED UNDERGROUND UTILITIES THAT CONFLICT WITH CONSTRUCTION SHALL BE DISPOSED OF OUTSIDE THE LIMITS OF THE RIGHT OF WAY ACCORDING TO ARTICLE 202.03 OF THE STANDARD SPECIFICATIONS AND AS DIRECTED BY THE ENGINEER. THIS WORK WILL NOT BE PAID FOR SEPARATELY, BUT WILL BE INCLUDED IN THE COST OF EARTH EXCAVATION.
4. ANY REFERENCE TO A STANDARD IN THESE PLANS SHALL BE INTERPRETED TO MEAN THE EDITION AS INDICATED BY THE SUBNUMBER SHOWN IN THE LIST OF STANDARDS OR THE COPY INCLUDED IN THESE PLANS.
5. THE CONTRACTOR SHALL CONTACT JULIE AT LEAST 48 HOURS PRIOR TO EXCAVATION TO DETERMINE WHICH UTILITIES ARE IN THE AREA.
- 6.
- 7.

COMMITMENTS

STATE OF ILLINOIS
DEPARTMENT OF TRANSPORTATION
DISTRICT THREE
AS BUILT INFORMATION

STATE OF ILLINOIS
DEPARTMENT OF TRANSPORTATION
DISTRICT THREE

SUPERVISING CONSTRUCTION FIELD ENGINEER

PREPARED BY: _____
DISTRICT STUDIES & PLANS ENGINEER

RESIDENT ENGINEER / TECHNICIAN

DATE: _____

START & END DATES
OF CONSTRUCTION:

EXAMINED BY: _____
DISTRICT CONSTRUCTION ENGINEER

INSPECTORS:

DISTRICT MATERIALS ENGINEER

DISTRICT OPERATIONS ENGINEER

MODEL: Default
FILE: \\nas101.pw.stateil.us\pub\hanscom\data\illinois\pwr\IDOT\Documents\IDOT_Offices\District 3\Projects\03366L11\CADD\03366L11-Cover.dgn

USER NAME = WOODSHANKRL	DESIGNED -	REVISED -
	DRAWN -	REVISED -
PLOT SCALE = 100.0000' / in.	CHECKED -	REVISED -
PLOT DATE = 7/1/2020	DATE -	REVISED -

**STATE OF ILLINOIS
DEPARTMENT OF TRANSPORTATION**

GENERAL NOTES

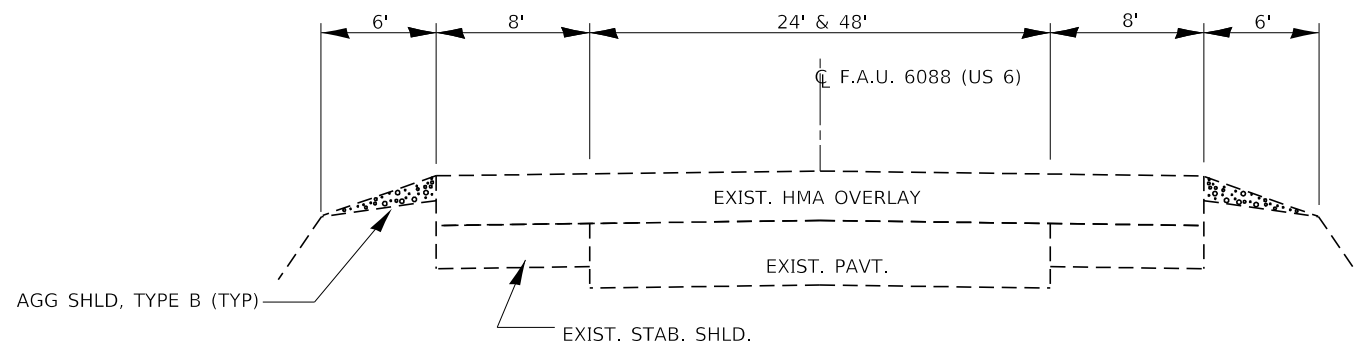
SCALE: SHEET 1 OF 1 SHEETS STA. TO STA.

F.A.U. & F.A.P. RTE.	SECTION	COUNTY	TOTAL SHEETS	SHEET NO.
6088 & 567	(33)ELE & (331,332)ELE	*	13	2
*BUREAU & DEKALB		CONTRACT NO. 66L11		
ILLINOIS		FED. AID PROJECT		

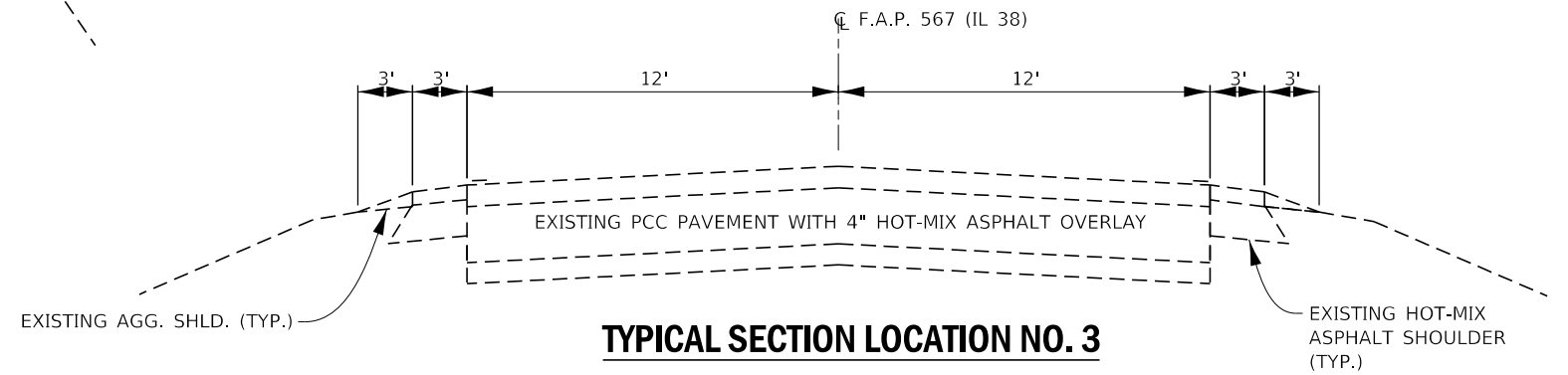
CODE NO.	ITEM	UNIT	TOTAL QUANTITY	CONSTRUCTION CODE		
				CONTRACT MAINTENANCE		
				100% STATE		
				TRAFFIC SIGNALS	TRAFFIC SIGNALS	TRAFFIC SIGNALS
0021	0021	0021				
RURAL	URBAN	RURAL				
BUREAU COUNTY	DEKALB COUNTY	DEKALB COUNTY				
67100100	MOBILIZATION	L SUM	1	0.25	0.5	0.25
70100450	TRAFFIC CONTROL AND PROTECTION, STANDARD 701201	L SUM	1	0.25	0.5	0.25
70102635	TRAFFIC CONTROL AND PROTECTION, STANDARD 701701	L SUM	1	0.25	0.5	0.25
85000200	MAINTENANCE OF EXISTING TRAFFIC SIGNAL INSTALLATION	EACH	4	1	2	1
85700200	FULL-ACTUATED CONTROLLER AND TYPE IV CABINET	EACH	4	1	2	1
86200300	UNINTERRUPTABLE POWER SUPPLY, EXTENDED	EACH	4	1	2	1
89502375	REMOVE EXISTING TRAFFIC SIGNAL EQUIPMENT	EACH	4	1	2	1
X1400215	REMOTE CONTROLLED VIDEO SYSTEM	EACH	4	1	2	1
X8570226	FULL-ACTUATED CONTROLLER AND TYPE IV CABINET, SPECIAL	EACH	4	1	2	1
Z0033072	VIDEO VEHICLE DETECTION SYSTEM	EACH	1	1		
Z0073510	TEMPORARY TRAFFIC SIGNAL TIMING	EACH	4	1	2	1

MODEL: Default
 FILE: \\nas101.pw.state.il.us\pub\baronm.d\at\illinois.gov\PWIDOT\Documents\DOT_Offices\Director_3\Projects\66L11\CAD\66L11-cover.dgn

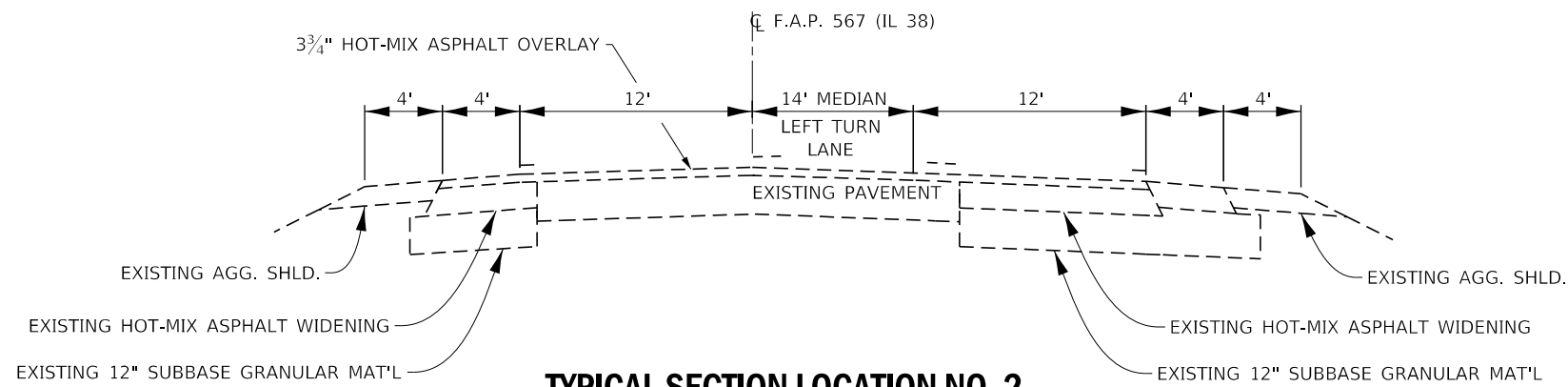
USER NAME = WOODSHANKRL	DESIGNED -	REVISED -	STATE OF ILLINOIS DEPARTMENT OF TRANSPORTATION	SUMMARY OF QUANTITIES		F.A.U. & F.A.P. RTE.	SECTION	COUNTY	TOTAL SHEETS	SHEET NO.
PLOT SCALE = 100.0000' / in.	DRAWN -	REVISED -				6088 & 567	(33)ELE & (331,332)ELE	*	13	3
PLOT DATE = 7/1/2020	CHECKED -	REVISED -		SCALE:		SHEET 1 OF 1 SHEETS	STA.	TO STA.	CONTRACT NO. 66L11	
DATE -	REVISED -								ILLINOIS FED. AID PROJECT	



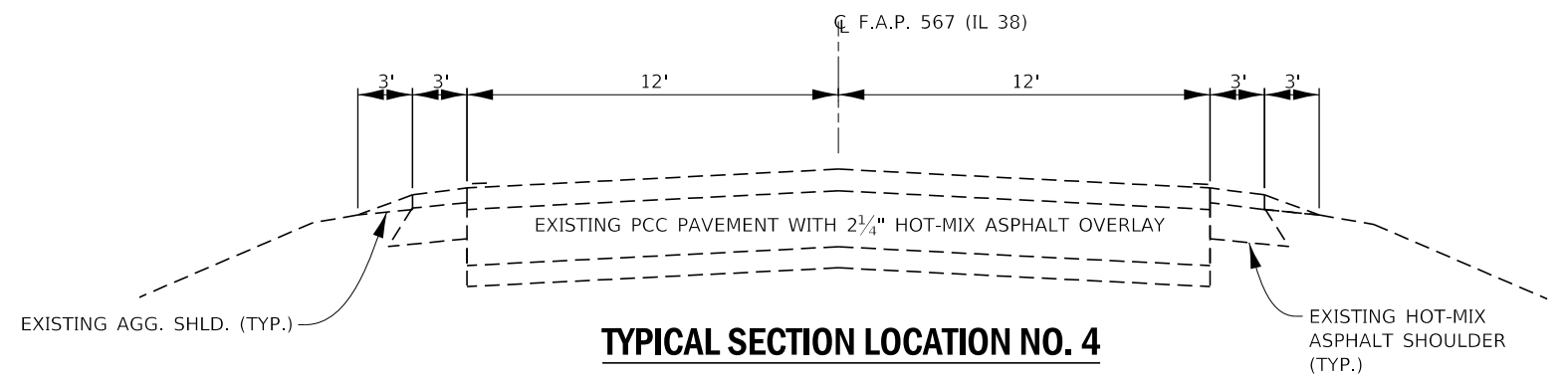
TYPICAL SECTION LOCATION NO. 1
F.A.U. ROUTE 6088 (US 6)
STA. 86+10 TO STA 97+00



TYPICAL SECTION LOCATION NO. 3
F.A.P. ROUTE 567 (IL 38)
SOMONAUK RD. (CORTLAND)
STA. 195+90 TO STA. 226+50



TYPICAL SECTION LOCATION NO. 2
F.A.P. 567 (IL 38)
MALTA RD. (KISHWAUKEE COLLEGE)
STA. 180+88 TO STA. 187+46



TYPICAL SECTION LOCATION NO. 4
F.A.P. ROUTE 567 (IL 38)
COUNTY LINE RD. (MAPLE PARK)
STA. 414+49 TO STA. 474+79

MODEL: Default
 FILE: Malta_College_Plan_Supplemental.dwg
 PROJECT: I:\Projects\66L11\CADD\66L11-Cover.dwg

USER NAME = WOODSHANKRL	DESIGNED -	REVISED -
	DRAWN -	REVISED -
PLOT SCALE = 100.0000' / in.	CHECKED -	REVISED -
PLOT DATE = 7/1/2020	DATE -	REVISED -

STATE OF ILLINOIS
DEPARTMENT OF TRANSPORTATION

TYPICAL SECTIONS	
SCALE:	SHEET 1 OF 1 SHEETS STA. TO STA.

F.A.U. & F.A.P. RTE.	SECTION	COUNTY	TOTAL SHEETS	SHEET NO.
6088 & 567	(33)ELE & (331,332)ELE	*	13	4
*BUREAU & DEKALB			CONTRACT NO. 66L11	
ILLINOIS FED. AID PROJECT				

SCHEDULES - CONTROLLER CABINET

LOCATION	REMOVE EXISTING TRAFFIC SIGNAL EQUIPMENT	REMOVE CONTROLLER VIDEO SYSTEM	MAINTENANCE OF EXISTING TRAFFIC SIGNAL INSTALLATION	FULL ACTUATED CONTROLLER AND TYPE 4 CABINET	FULL ACTUATED CONTROLLER AND TYPE 4 CABINET SPECIAL	UNINTERRUPTED POWER SUPPLY EXTENDED	REMOTE CONTROLLED VIDEO SYSTEM	VIDEO VEHICLE DETECTION SYSTEM	TEMPORARY TRAFFIC SIGNAL TIMING
	EACH	EACH	EACH	EACH	EACH	EACH	EACH	EACH	EACH
LOCATION #1: US 6 & COUNTY LINE RD. INTERSECTION (DALZELL RD.)	1	1	1	1	1	1	1	1	1
LOCATION #2: IL 38 & MALTA RD. INTERSECTION (KISHWAUKEE COLLEGE)	1	1	1	1	1	1	1		1
LOCATON #3: IL 38 & SOMONAUK RD. INTERSECTION (CORTLAND)	1	1	1	1	1	1	1		1
LOCATION #4: IL 38 & COUNTY LINE RD. INTERSECTION (MAPLE PARK)	1	1	1	1	1	1	1		1
TOTAL	4	4	4	4	4	4	4	1	4

MODEL: Default
 FILE: \\nas01c.pw.state.il.us\pub\lanscom\data\illinois.gov\PW\DOT\Documents\DOT_Offices\District_3\Projects\0366L11\CADD\0366L11-cover.dgn

USER NAME = WOODSHANKRL	DESIGNED -	REVISED -
	DRAWN -	REVISED -
PLOT SCALE = 100.0000' / in.	CHECKED -	REVISED -
PLOT DATE = 7/1/2020	DATE -	REVISED -

**STATE OF ILLINOIS
DEPARTMENT OF TRANSPORTATION**

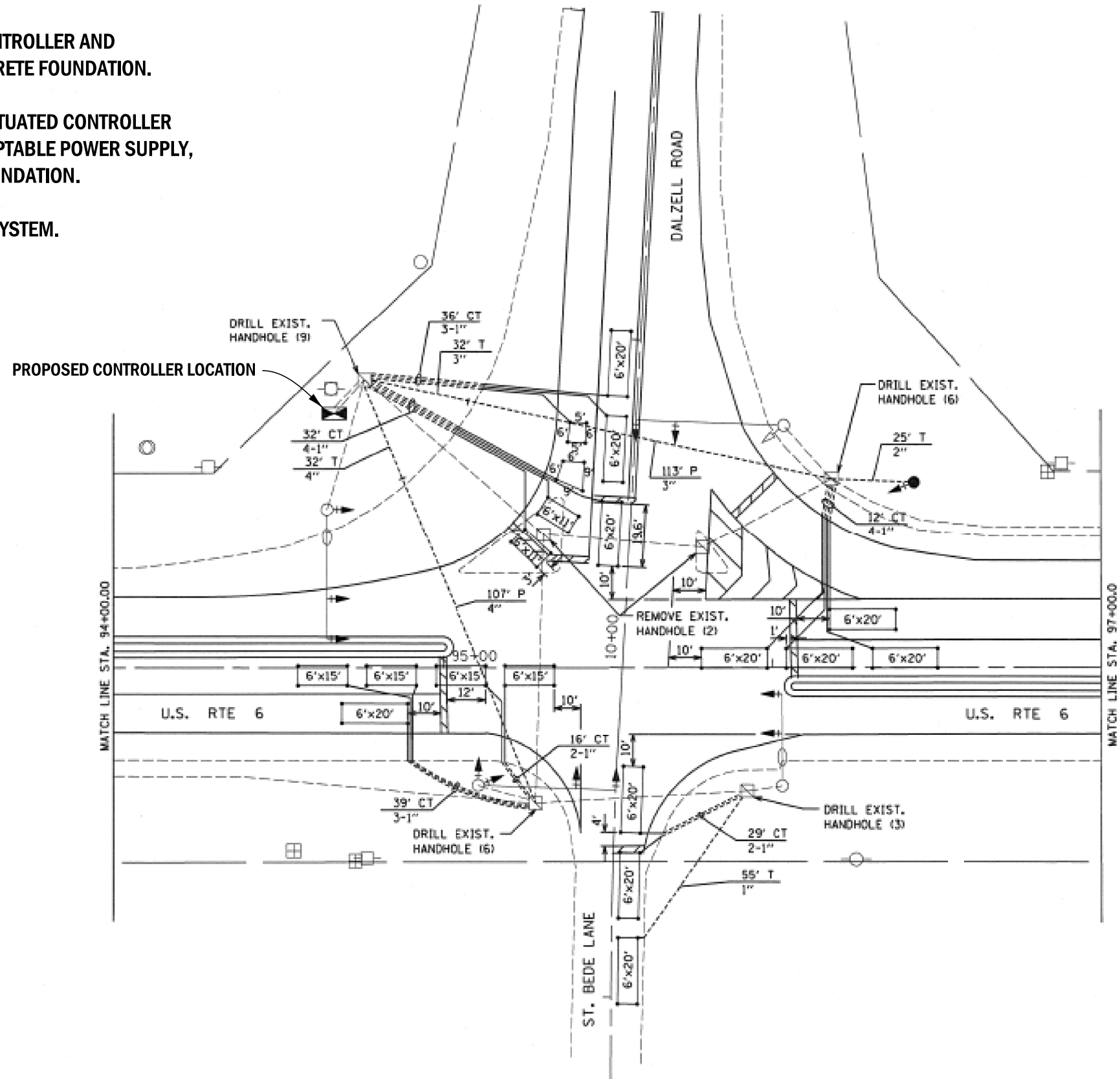
SCHEDULES

SCALE: SHEET 1 OF 1 SHEETS STA. TO STA.

F.A.U. & F.A.P. RTE.	SECTION	COUNTY	TOTAL SHEETS	SHEET NO.
6088 & 567	(33)ELE & (331,332)ELE	*	13	5
*BUREAU & DEKALB			CONTRACT NO. 66L11	
ILLINOIS		FED. AID PROJECT		

DESCRIPTION OF WORK

1. REMOVE EXISTING FULL ACTUATED CONTROLLER AND TYPE IV CABINET FROM EXISTING CONCRETE FOUNDATION.
2. FURNISH AND INSTALL A NEW FULL ACTUATED CONTROLLER AND TYPE IV CABINET WITH UNINTERRUPTIBLE POWER SUPPLY, EXTENDED ON EXISTING CONCRETE FOUNDATION.
3. INSTALL A VIDEO VEHICLE DETECTION SYSTEM.



TRAFFIC SIGNALS LEGEND

EXISTING	PROPOSED	
		CONTROLLER CABINET
		CONDUIT
		SIGNAL HEAD WITH BACKPLATE
		STEEL MAST ARM
		TRAFFIC SIGNAL POST
		HANDHOLE

MODEL: Default
 FILE: \\bldg01\pub\baronm.d\at\ilink\pwr\WIDOT\Documents\DOT_Offices\Dalzell_3\Project\03366L11\CADD\03366L11-cover.dgn

USER NAME = WOODSHANKRL	DESIGNED -	REVISED -
	DRAWN -	REVISED -
PLOT SCALE = 100,0000' / in.	CHECKED -	REVISED -
PLOT DATE = 7/3/2020	DATE -	REVISED -

**STATE OF ILLINOIS
DEPARTMENT OF TRANSPORTATION**

**LOCATION #1: EXISTING PLAN DETAILS: INTERSECTION OF
US 6 AND COUNTY LINE RD. (DALZELL RD.)**

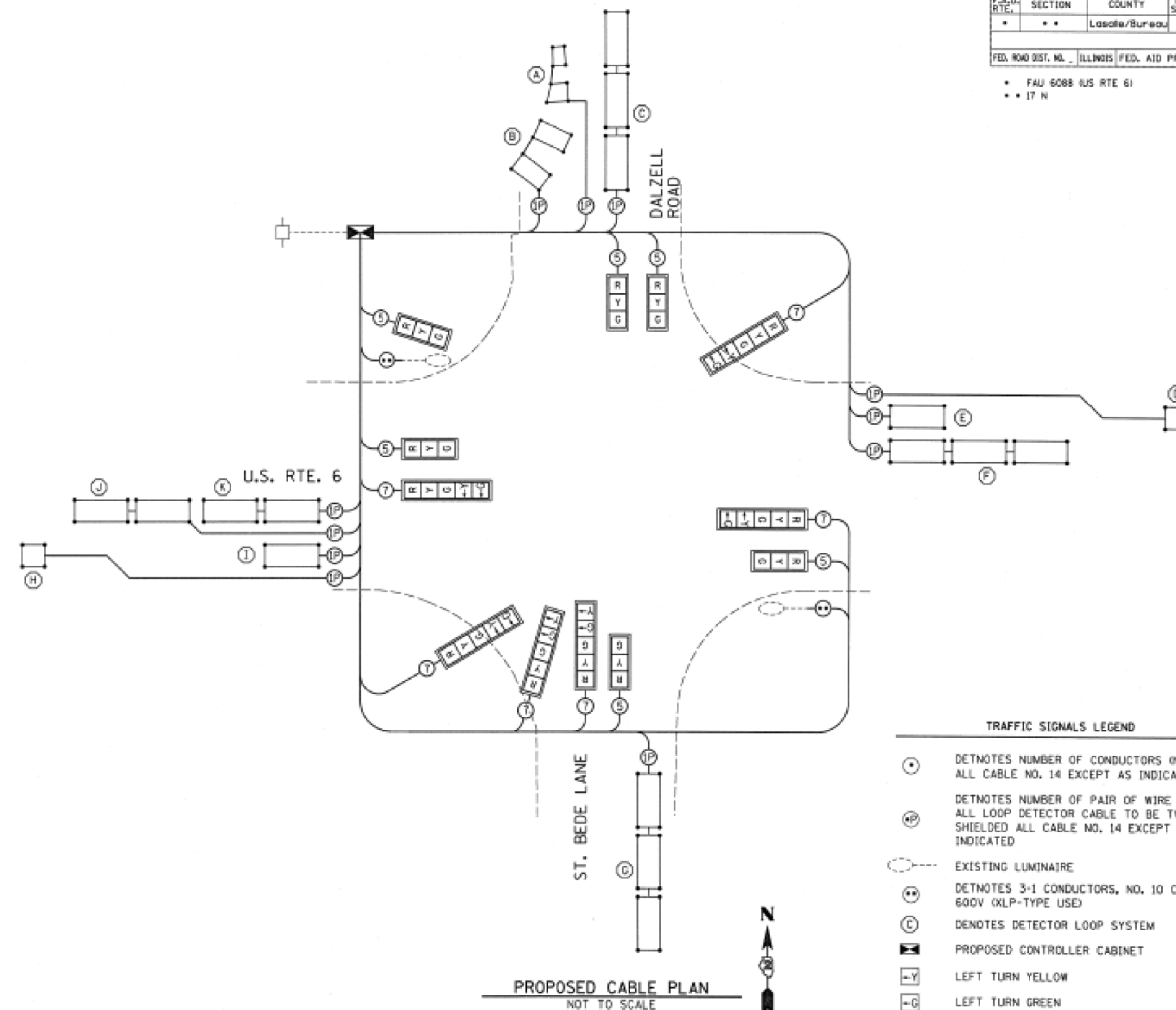
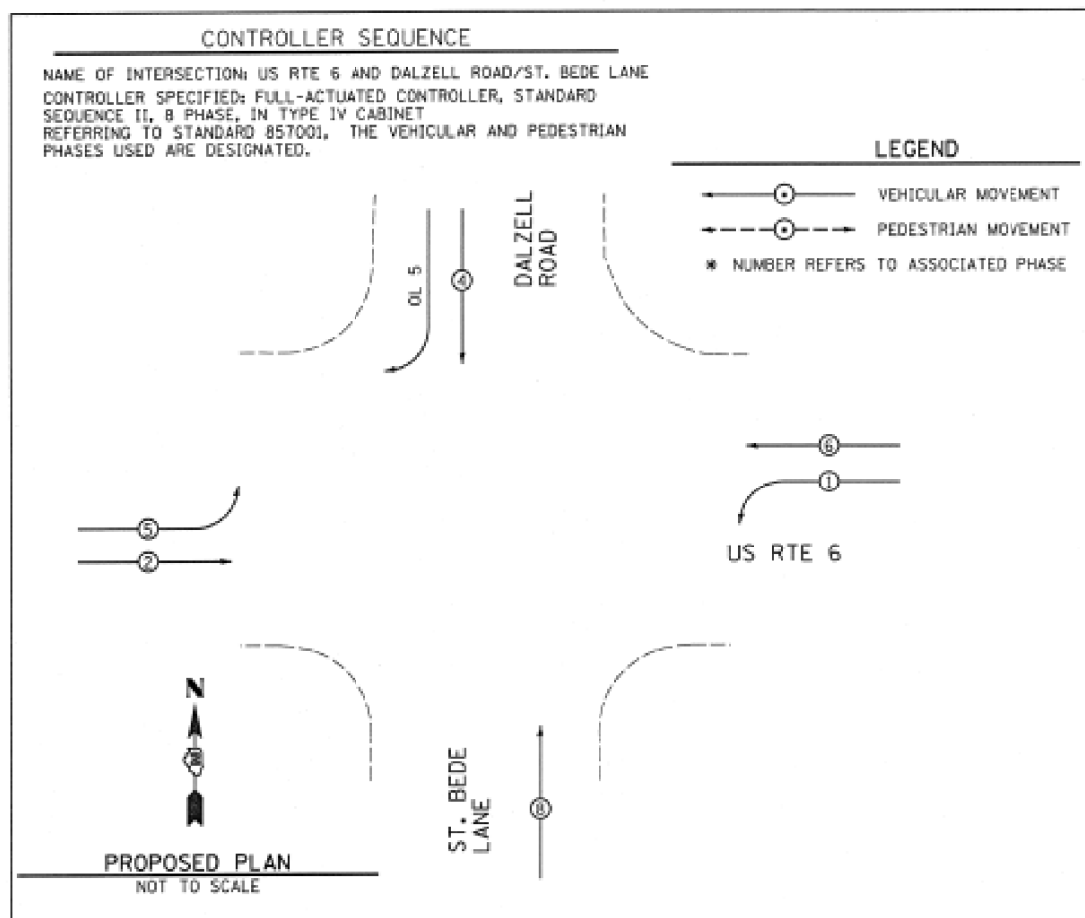
SCALE: SHEET 1 OF 1 SHEETS STA. TO STA.

F.A.U. & F.A.P. RTE.	SECTION	COUNTY	TOTAL SHEETS	SHEET NO.
6088 & 567	(33)ELE & (331,332)ELE	*	13	6
*BUREAU & DEKALB			CONTRACT NO. 66L11	
ILLINOIS		FED. AID PROJECT		

F.A.U. RTE.	SECTION	COUNTY	TOTAL SHEETS	SHEET NO.
• •	• •	Lasalle/Bureau	18	15

FED. ROAD DIST. NO. ILLINOIS FED. AID PROJECT

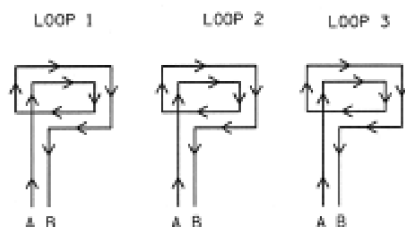
- FAU 6088 (US RTE 6)
- • 17 N



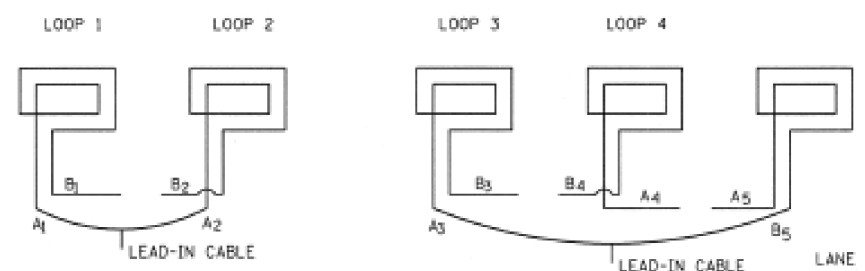
TRAFFIC SIGNALS LEGEND

- DETNOTES NUMBER OF CONDUCTORS (NEW)
ALL CABLE NO. 14 EXCEPT AS INDICATED
- DETNOTES NUMBER OF PAIR OF WIRE (NEW)
ALL LOOP DETECTOR CABLE TO BE TWISTED,
SHIELDED ALL CABLE NO. 14 EXCEPT AS
INDICATED
- EXISTING LUMINAIRE
- DETNOTES 3-1 CONDUCTORS, NO. 10 CABLE,
600V (XLP-TYPE USE)
- DENOTES DETECTOR LOOP SYSTEM
- PROPOSED CONTROLLER CABINET
- Y- LEFT TURN YELLOW
- G- LEFT TURN GREEN
- SIGNAL SECTION 12"
- VEHICLE DETECTOR, INDUCTION LOOP
- TRAFFIC SIGNAL BACKPLATE

STEP 1
WIND ALL LOOPS CLOCKWISE, LABEL BEGINNING END OF CABLE A.
LABEL ENDING END OF CABLE B. FOLLOW DETECTOR LOOP CABLE
MANUFACTURER'S INSTRUCTIONS ON NUMBER OF TURNS FOR LOOP.



STEP 2
CONNECT LEAD B OF LOOP 1 TO LEAD B OF LOOP 2.
CONNECT LEAD A OF LOOP 2 TO LEAD A OF LOOP 3.



DETECTOR LOOP WINDING AND SERIES SPLICING DETAIL
(SEE DETECTOR LOOP INDUCTANCE CHART FOR NUMBER OF TURNS)

FOR INFORMATION ONLY

REVISIONS	
NAME	DATE

ILLINOIS DEPARTMENT OF TRANSPORTATION
CABLE PLAN
 FAU 6088 (US RTE 6) AND
 DALZELL ROAD
 SECTION 17 N
 LASALLE & BUREAU COUNTY

SCALE: VERT. 1"=20'
 HORIZ. 1"=20'
 DATE 9/05

DRAWN BY ARR
 CHECKED BY MWF

MODEL: Default
 FILE: \\nasalle.com\data\illinois\dot\Documents\DOT_Offices\Dalzell_3\Project\0336611\ICADD\0336611-cover.dwg

USER NAME = WOODSHANKL	DESIGNED -	REVISED -
	DRAWN -	REVISED -
PLOT SCALE = 100,0000' / in.	CHECKED -	REVISED -
PLOT DATE = 7/1/2020	DATE -	REVISED -

STATE OF ILLINOIS
 DEPARTMENT OF TRANSPORTATION

LOCATION #1: EXISTING PLAN DETAILS: INTERSECTION OF
 US 6 AND COUNTY LINE RD. (DALZELL RD.)



SCALE: SHEET 2 OF 2 SHEETS STA. TO STA.

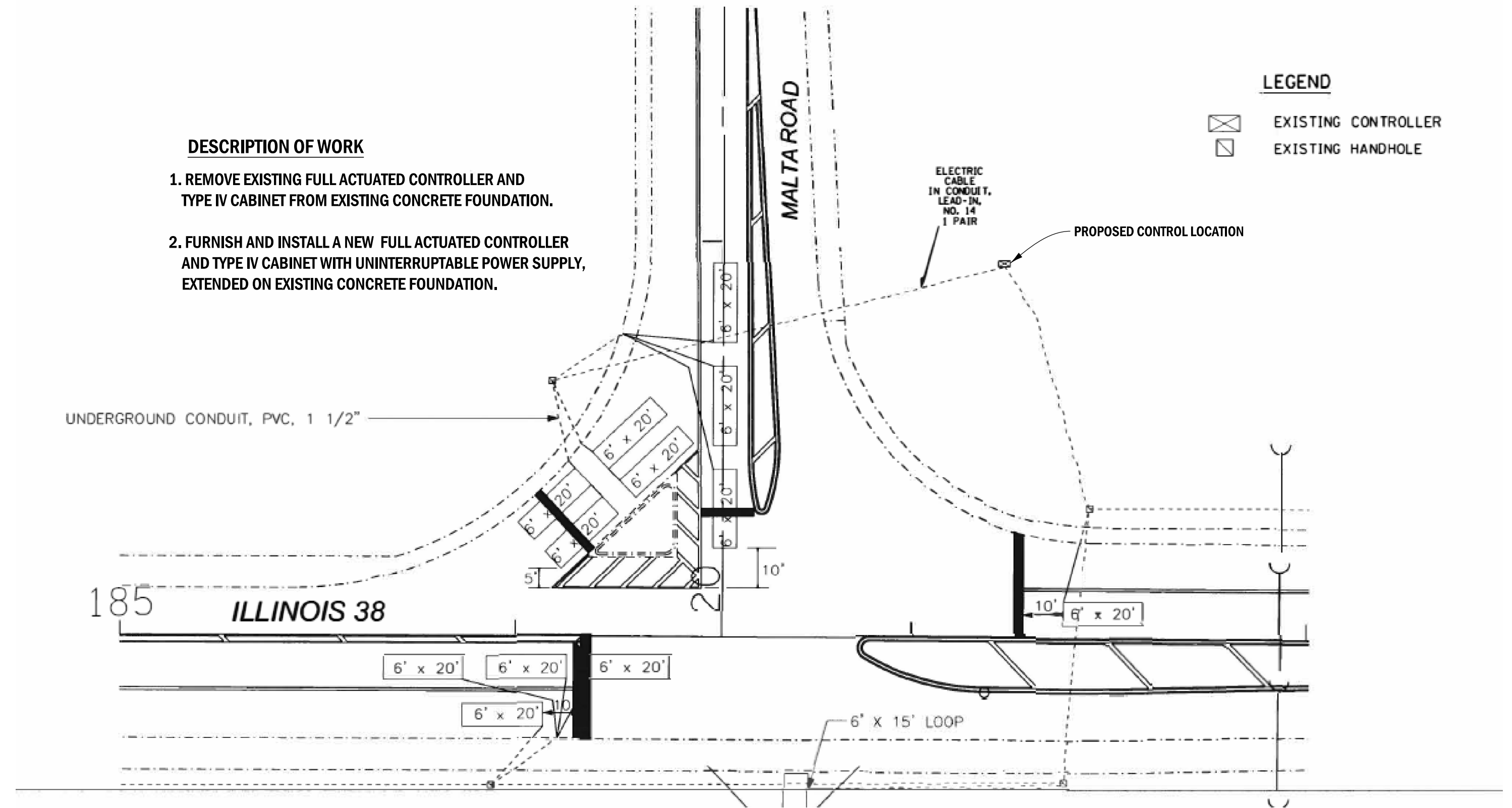
F.A.U. & F.A.P. RTE.	SECTION	COUNTY	TOTAL SHEETS	SHEET NO.
6088 & 567	(33)ELE & (331,332)ELE	*	13	7
*BUREAU & DEKALB			CONTRACT NO. 66L11	
ILLINOIS FED. AID PROJECT				

DESCRIPTION OF WORK

1. REMOVE EXISTING FULL ACTUATED CONTROLLER AND TYPE IV CABINET FROM EXISTING CONCRETE FOUNDATION.
2. FURNISH AND INSTALL A NEW FULL ACTUATED CONTROLLER AND TYPE IV CABINET WITH UNINTERRUPTABLE POWER SUPPLY, EXTENDED ON EXISTING CONCRETE FOUNDATION.

LEGEND

-  EXISTING CONTROLLER
-  EXISTING HANDHOLE



MODEL: Default
 FILE: \\nas01c:\pub\planroom\dat\illinois\pwr\DOT\Documents\DOT_Offices\Illinet\3\Project\03366L11\CADD\03366L11-cover.dgn

USER NAME = WOODSHANKRL	DESIGNED -	REVISED -
	DRAWN -	REVISED -
PLOT SCALE = 100,0000' / in.	CHECKED -	REVISED -
PLOT DATE = 7/3/2020	DATE -	REVISED -

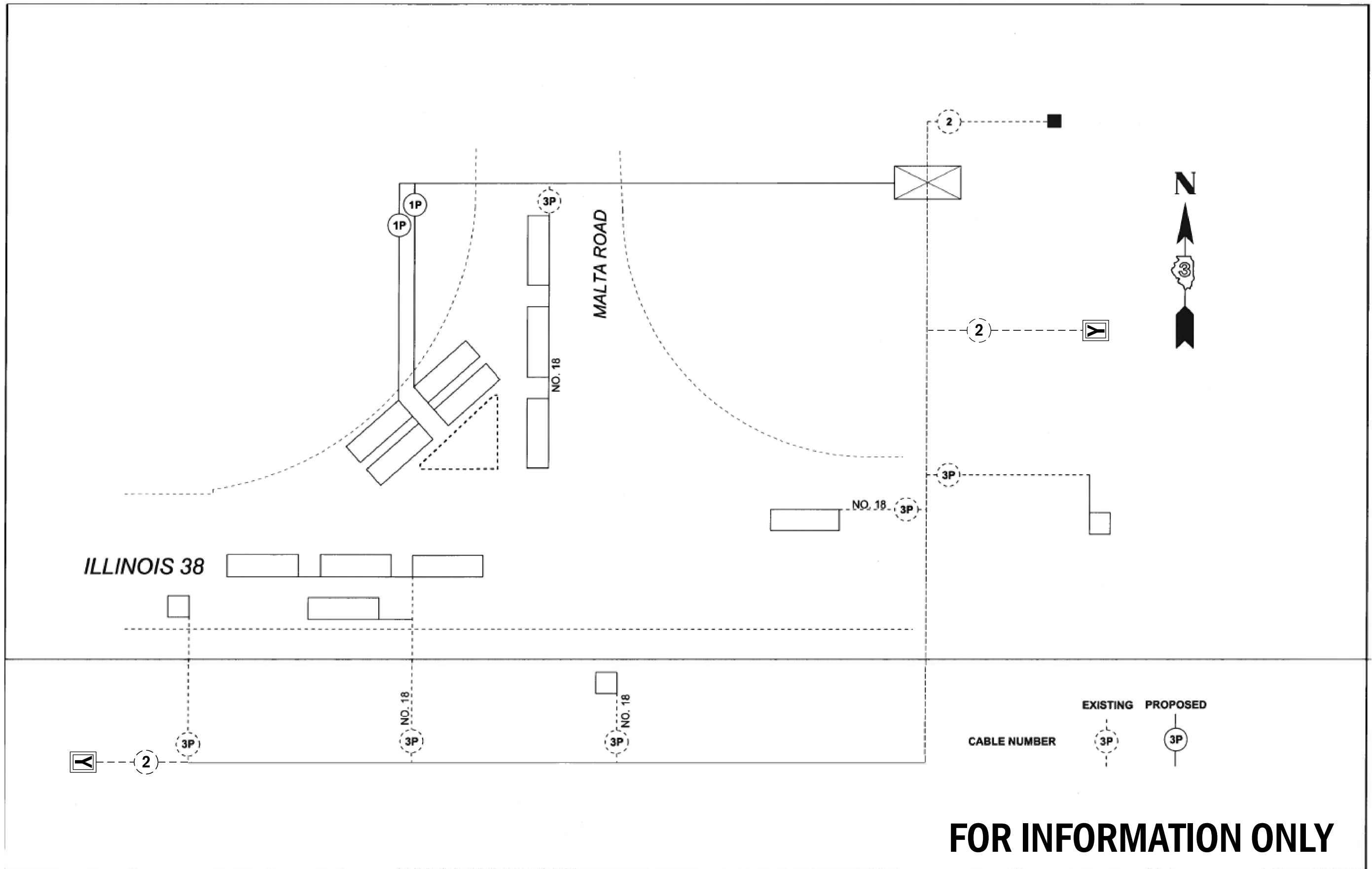
**STATE OF ILLINOIS
DEPARTMENT OF TRANSPORTATION**

**LOCATION #2: EXISTING PLAN DETAILS INTERSECTION OF
IL 38 AND MALTA RD. (KISHWAUKEE COLLEGE)**

SCALE: SHEET 1 OF 3 SHEETS STA. TO STA.

F.A.U. & F.A.P. RTE.	SECTION	COUNTY	TOTAL SHEETS	SHEET NO.
6088 & 567	(33)ELE & (331,332)ELE	*	13	8
*BUREAU & DEKALB			CONTRACT NO. 66L11	
ILLINOIS FED. AID PROJECT				

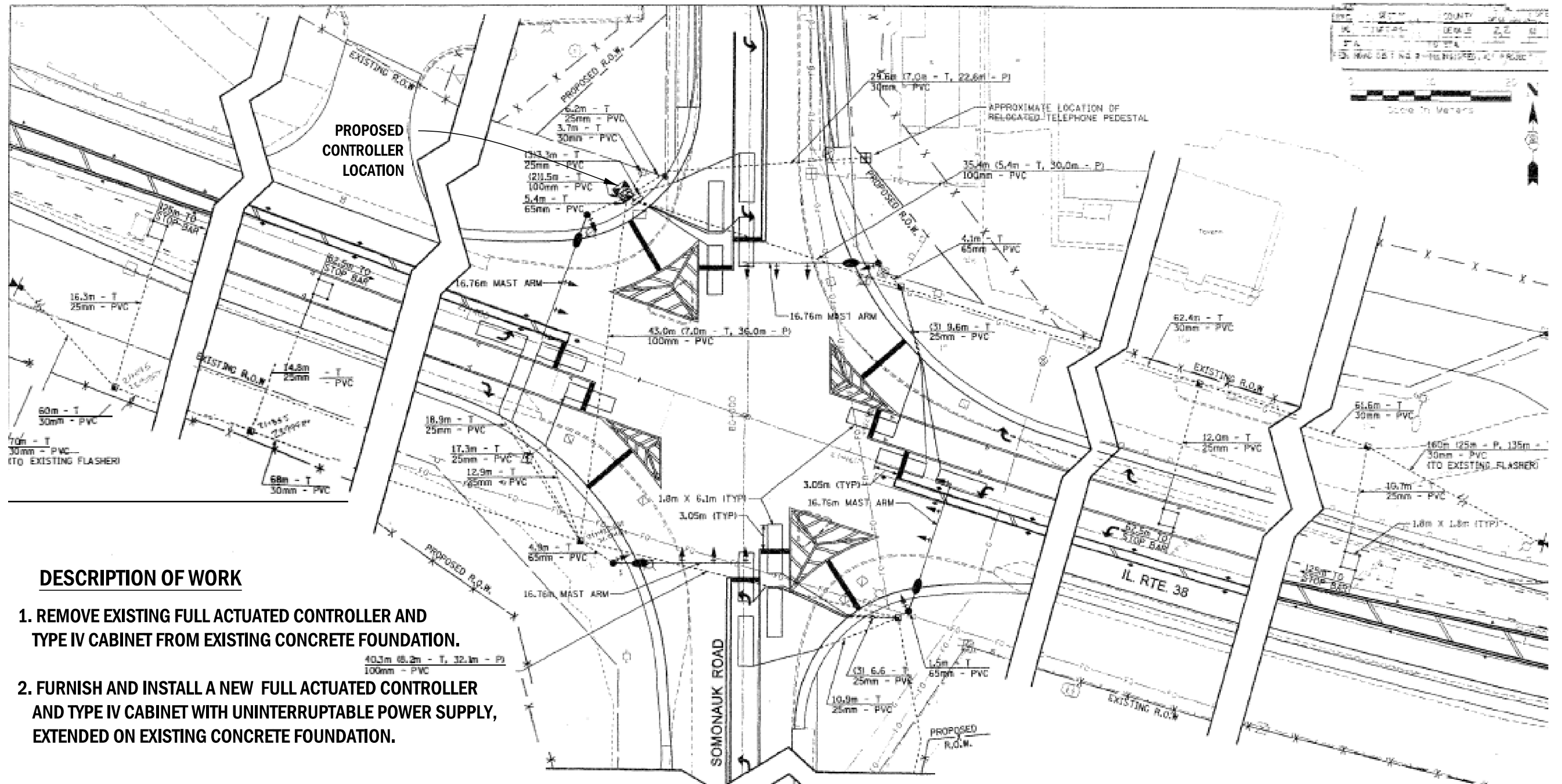
MODEL: Default
 FILE: \\blm\c:\pub\blm\com\dat\illinois\dot\Documents\DOT_Offices\District_3\Projects\0366L11\CADD\0366L11-cover.dgn



FOR INFORMATION ONLY

FILE NAME =	USER NAME = plstsch	DESIGNED -	REVISED -	STATE OF ILLINOIS DEPARTMENT OF TRANSPORTATION	CABLE PLAN - MALTA ROAD	F.A.P. RTE.	SECTION	COUNTY	TOTAL SHEETS	SHEET NO.
plstsch\plstsch\dot\illinois\dot\Documents\DOT_Offices\District_3\Projects\0366L11\CADD\0366L11-cover.dgn	plstsch\DOT_Offices\District_3\Projects\0366L11\CADD\0366L11-cover.dgn	DRAWN -	REVISED -			567	34 RS-6	DEKALB	32	21
		CHECKED -	REVISED -			CONTRACT NO. 66E50				
		DATE -	REVISED -	ILLINOIS FED. AID PROJECT						

USER NAME = WOODSHANKRL	DESIGNED -	REVISED -	STATE OF ILLINOIS DEPARTMENT OF TRANSPORTATION	LOCATION #2: EXISTING PLAN DETAILS INTERSECTION OF IL 38 AND MALTA RD. (KISHWAUKEE COLLEGE)	F.A.U. & F.A.P. RTE.	SECTION	COUNTY	TOTAL SHEETS	SHEET NO.
	DRAWN -	REVISED -			6088 & 567	(33)ELE & (331,332)ELE	*	13	9
	CHECKED -	REVISED -			CONTRACT NO. 66L11				
	DATE -	REVISED -	ILLINOIS FED. AID PROJECT						



DESCRIPTION OF WORK

1. REMOVE EXISTING FULL ACTUATED CONTROLLER AND TYPE IV CABINET FROM EXISTING CONCRETE FOUNDATION.
2. FURNISH AND INSTALL A NEW FULL ACTUATED CONTROLLER AND TYPE IV CABINET WITH UNINTERRUPTABLE POWER SUPPLY, EXTENDED ON EXISTING CONCRETE FOUNDATION.

LEGEND

	EXISTING CONTROLLER		PROPOSED CONTROLLER
	EXISTING ALUMINUM MAST ARM ASSEMBLY AND POLE		PROPOSED ALUMINUM MAST ARM ASSEMBLY AND POLE
	EXISTING STEEL MAST ARM ASSEMBLY AND POLE		PROPOSED STEEL MAST ARM ASSEMBLY AND POLE
	EXISTING SIGNAL HEAD AND POST		PROPOSED SIGNAL HEAD AND POST
	EXISTING SIGNAL HEAD		PROPOSED SIGNAL HEAD
	EXISTING PEDESTRIAN HEAD		PROPOSED PEDESTRIAN HEAD
	EXISTING HANHOLE		PROPOSED HANHOLE
	EXISTING CONDUIT (LENGTH AND SIZE)		PROPOSED PVC CONDUIT
	PROPOSED LUMINAIRE		UPPER NUMERAL INDICATES LENGTH
	PROPOSED PEDESTRIAN PUSHBUTTON		"T" INDICATES CONDUIT IN TRENCH
	PROPOSED JUNCTION BOX		"P" INDICATES CONDUIT PUSHED
	PROPOSED HEAVY DUTY HANHOLE		"C" INDICATES CONDUIT COILABLE
	PROPOSED DOUBLE HANHOLE		NUMERAL INDICATES SIZE AND

REVISIONS		DATE	DRAWN BY	CHECKED BY
NO.	DESCRIPTION			

ILLINOIS DEPARTMENT OF TRANSPORTATION
SOMONAUK ROAD & IL RTE 38
PROPOSED SIGNAL PLAN
DRAWN BY JPH / BAH
CHECKED BY DJF

MODEL: Default
FILE: \\nas01\p001\proj\6611\CD\Drawings\DOT\Office\Drawings\3\Project\6611\CD\Drawings\6611\Cover.dwg

USER NAME = WOODSHANKRL	DESIGNED -	REVISED -
	DRAWN -	REVISED -
PLOT SCALE = 100,0000' / in.	CHECKED -	REVISED -
PLOT DATE = 7/1/2020	DATE -	REVISED -

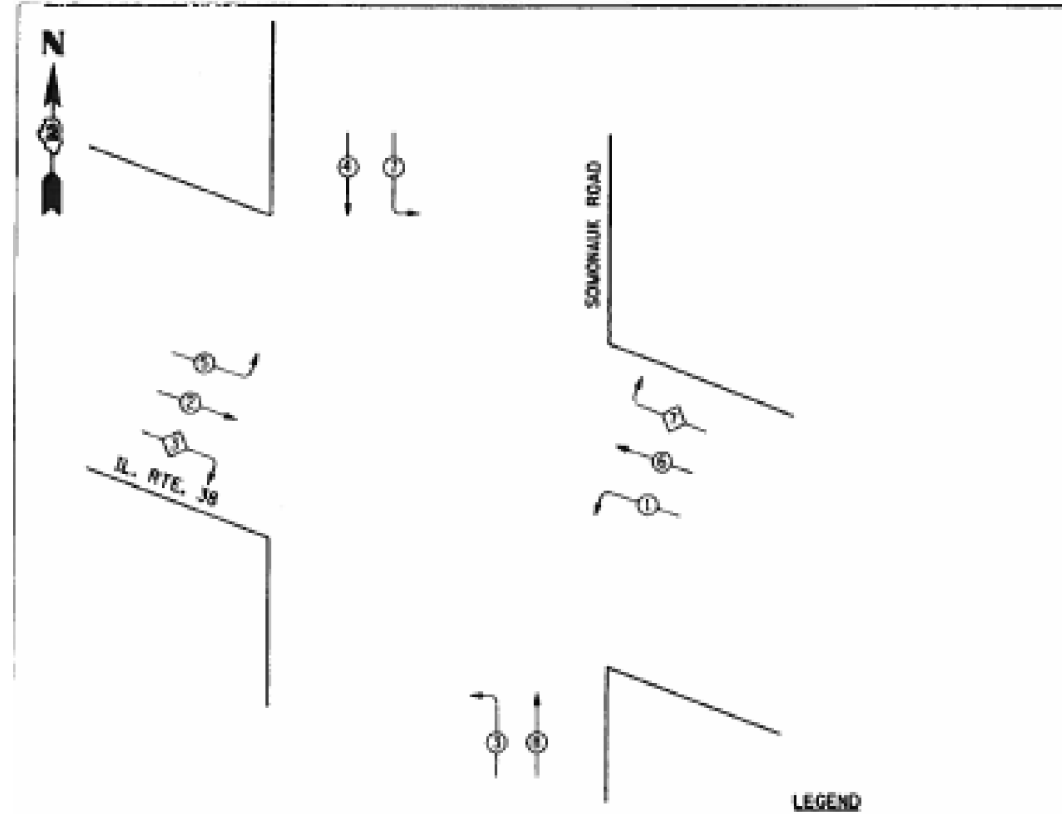
STATE OF ILLINOIS
DEPARTMENT OF TRANSPORTATION

LOCATION #3: EXISTING PLAN DETAILS FOR INTERSECTION OF
IL 38 AND SOMONAUK RD. (CORTLAND)

SCALE: 1 OF 2 SHEETS STA. TO STA.

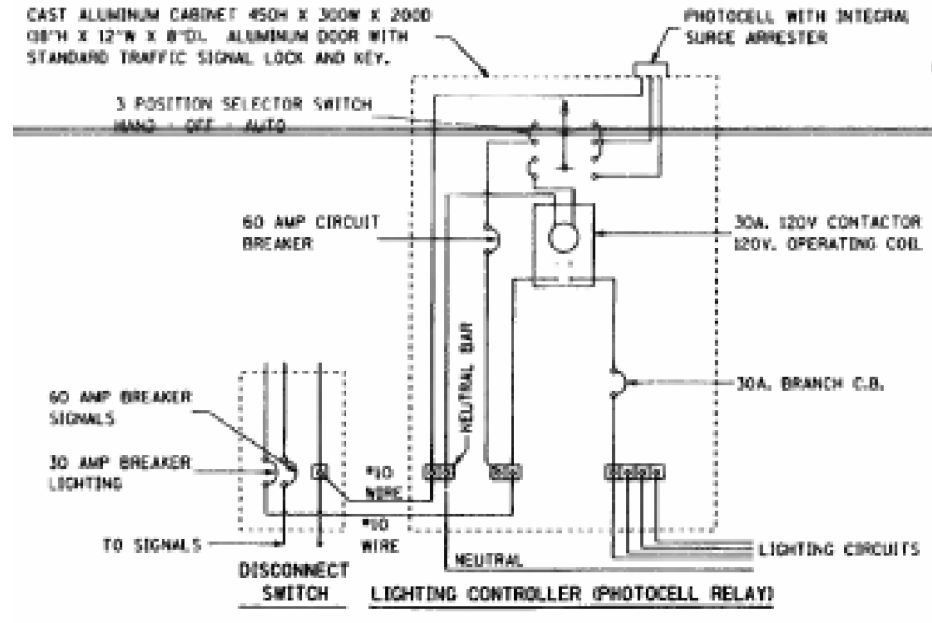
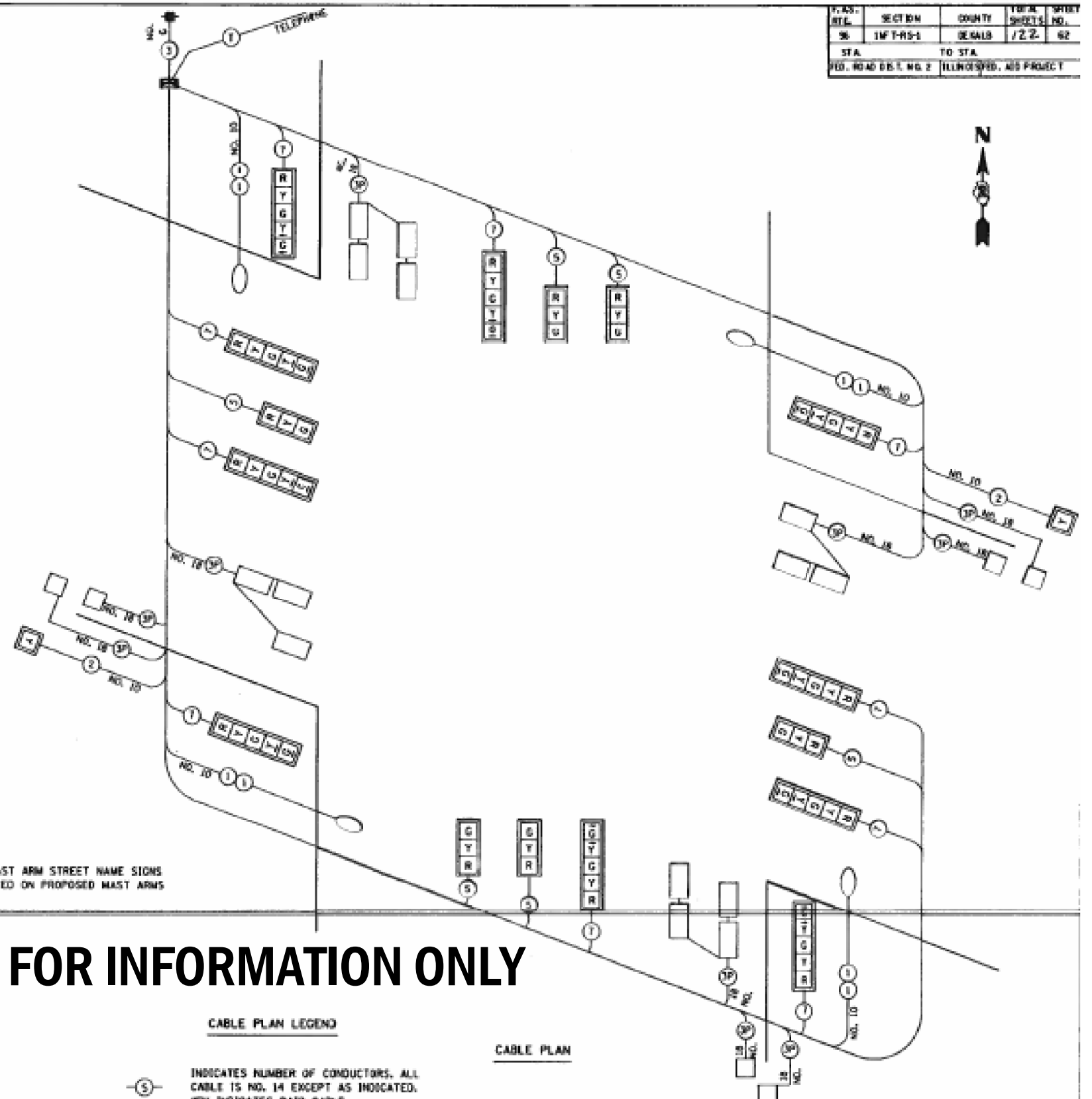
F.A.U. & F.A.P. RTE.	SECTION	COUNTY	TOTAL SHEETS	SHEET NO.
6088 & 567	(33)ELE & (331,332)ELE		13	10
BUREAU & DEKALB		CONTRACT NO. 66L11		
ILLINOIS FED. AID PROJECT				

F.A.S. RTL.	SECTION	COUNTY	TOTAL SHEETS	SHEET NO.
96	1M-T-RS-1	DEKALB	122	62
STA.		TO STA.		
FED. ROAD DIST. NO. 2		ILLINOIS FED. AID PROJECT		



DETECTOR ASSIGNMENT

DETECTOR	PHASE NO.	DIRECTION
A	4	SB PRESENT
B	7	SB LEFT TURN
C	8	NB FAR ADVANCE
D	8	NB MID ADVANCE
E	8	NB PRESENT
F	3	NB LEFT TURN
G	2	EB FAR ADVANCE
H	2	EB MID ADVANCE
I	2	EB PRESENT
J	5	EB LEFT TURN
K	6	WB FAR ADVANCE
L	6	WB MID ADVANCE
M	6	WB PRESENT
N	1	WB LEFT TURN



NOTE: EXISTING MAST ARM STREET NAME SIGNS TO BE PLACED ON PROPOSED MAST ARMS

FOR INFORMATION ONLY

CABLE PLAN LEGEND

- ⑤ - INDICATES NUMBER OF CONDUCTORS. ALL CABLE IS NO. 14 EXCEPT AS INDICATED. "P" INDICATES PAIR CABLE
- R Y G - NEW 12" SIGNAL HEAD WITH BACKPLATE
- - LUMINAIRE, 400 WATT

REVISIONS

NO.	DATE	DESCRIPTION

ILLINOIS DEPARTMENT OF TRANSPORTATION
SOMONAUK ROAD & IL. RTE. 38
CABLE PLAN AND PHASE DESIGNATION DIAGRAM
 DRAWN BY JPH / BAH
 CHECKED BY CNP

MODEL: Default
 FILE: \\nas01c:\pub\baroncom\data\illinois\dot\Documents\DOT_Offices\District_3\Projects\0366L11\CAD\Drawings\66L11-Cover.dwg

USER NAME = WOODSHANKRL	DESIGNED -	REVISED -
PLOT SCALE = 100,0000' / in.	DRAWN -	REVISED -
PLOT DATE = 7/13/2020	CHECKED -	REVISED -
	DATE -	REVISED -

STATE OF ILLINOIS
 DEPARTMENT OF TRANSPORTATION

LOCATION #3: EXISTING PLAN DETAILS FOR INTERSECTION OF
 IL 38 AND SOMONAUK RD. (CORTLAND)
 SCALE: SHEET 2 OF 2 SHEETS STA. TO STA.

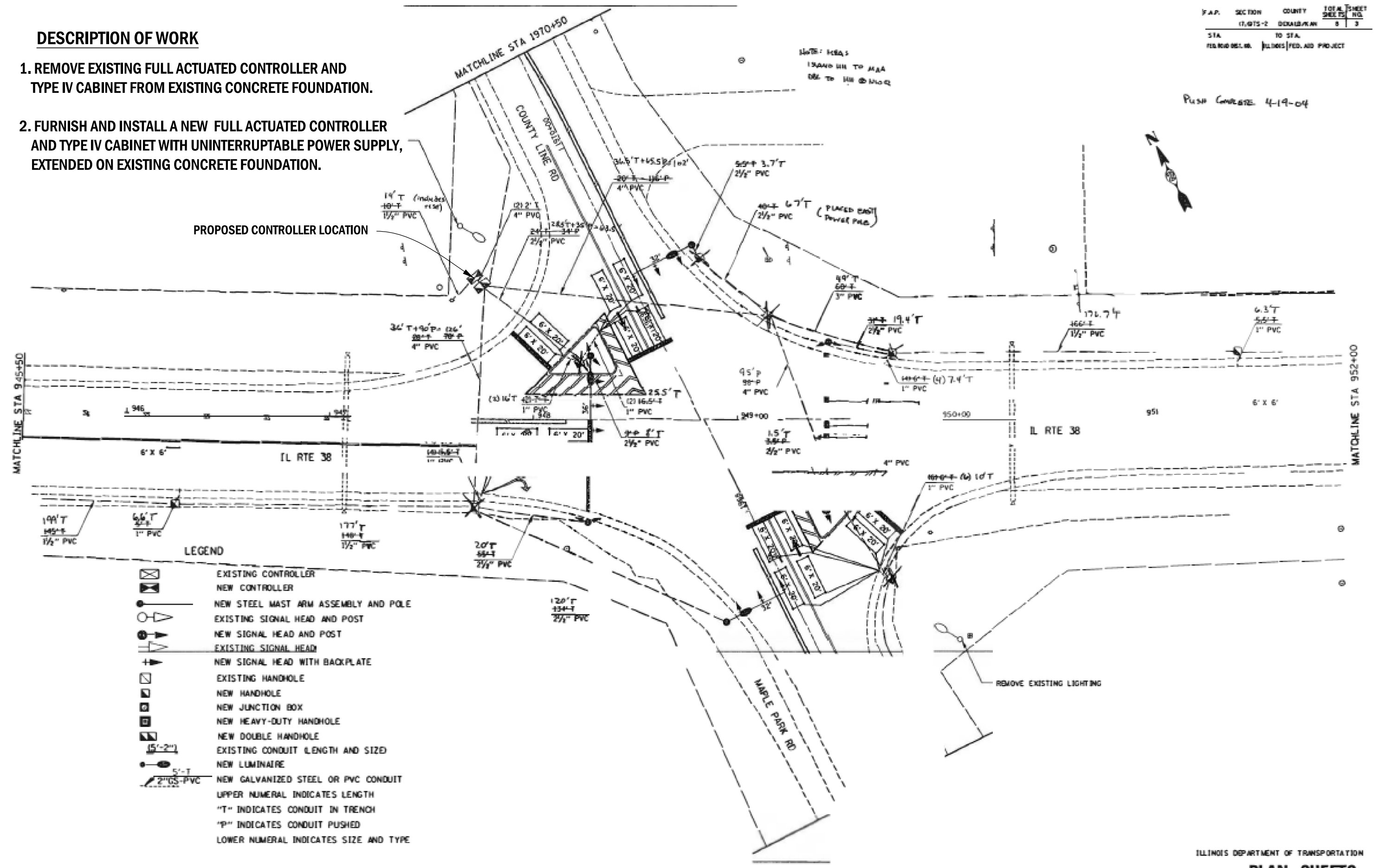
F.A.U. & F.A.P. RTE.	SECTION	COUNTY	TOTAL SHEETS	SHEET NO.
6088 & 567	(33)ELE & (331,332)ELE	*	13	11
*BUREAU & DEKALB			CONTRACT NO. 66L11	
ILLINOIS FED. AID PROJECT				

DESCRIPTION OF WORK

1. REMOVE EXISTING FULL ACTUATED CONTROLLER AND TYPE IV CABINET FROM EXISTING CONCRETE FOUNDATION.
2. FURNISH AND INSTALL A NEW FULL ACTUATED CONTROLLER AND TYPE IV CABINET WITH UNINTERRUPTIBLE POWER SUPPLY, EXTENDED ON EXISTING CONCRETE FOUNDATION.

F.A.P.	SECTION	COUNTY	TOTAL SHEETS	SHEET NO.
	17,075-2	DEKALB/PAK	8	3
STA.	TO STA.			
118+00	118+00		FED. AID PROJECT	

PUSH COMPLETE 4-19-04



PROPOSED CONTROLLER LOCATION

LEGEND

	EXISTING CONTROLLER
	NEW CONTROLLER
	NEW STEEL MAST ARM ASSEMBLY AND POLE
	EXISTING SIGNAL HEAD AND POST
	NEW SIGNAL HEAD AND POST
	EXISTING SIGNAL HEAD
	NEW SIGNAL HEAD WITH BACKPLATE
	EXISTING HANDHOLE
	NEW HANDHOLE
	NEW JUNCTION BOX
	NEW HEAVY-DUTY HANDHOLE
	NEW DOUBLE HANDHOLE
	EXISTING CONDUIT (LENGTH AND SIZE)
	NEW LUMINAIRE
	NEW GALVANIZED STEEL OR PVC CONDUIT

UPPER NUMERAL INDICATES LENGTH
 "T" INDICATES CONDUIT IN TRENCH
 "P" INDICATES CONDUIT PUSHED
 LOWER NUMERAL INDICATES SIZE AND TYPE

ILLINOIS DEPARTMENT OF TRANSPORTATION

PLAN SHEETS

STATE OF ILLINOIS
DEPARTMENT OF TRANSPORTATION

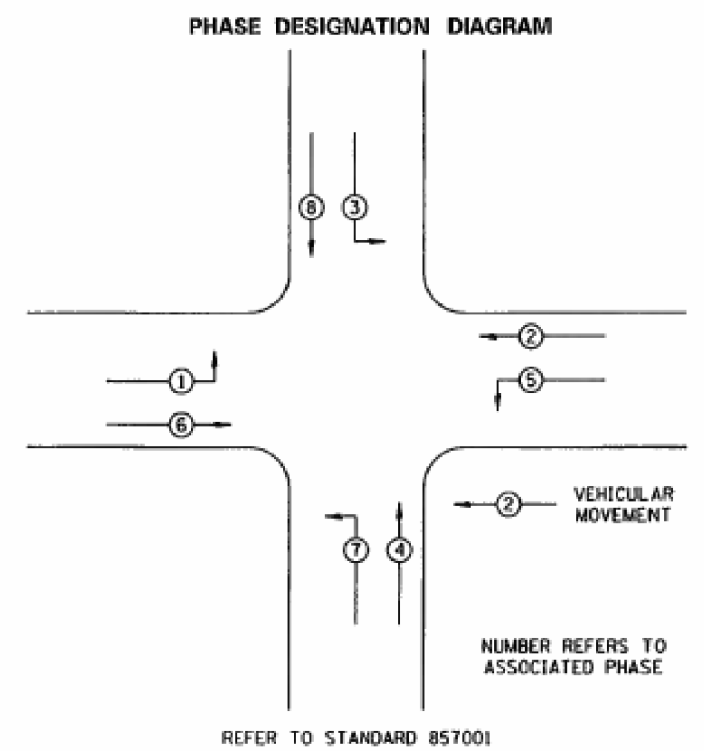
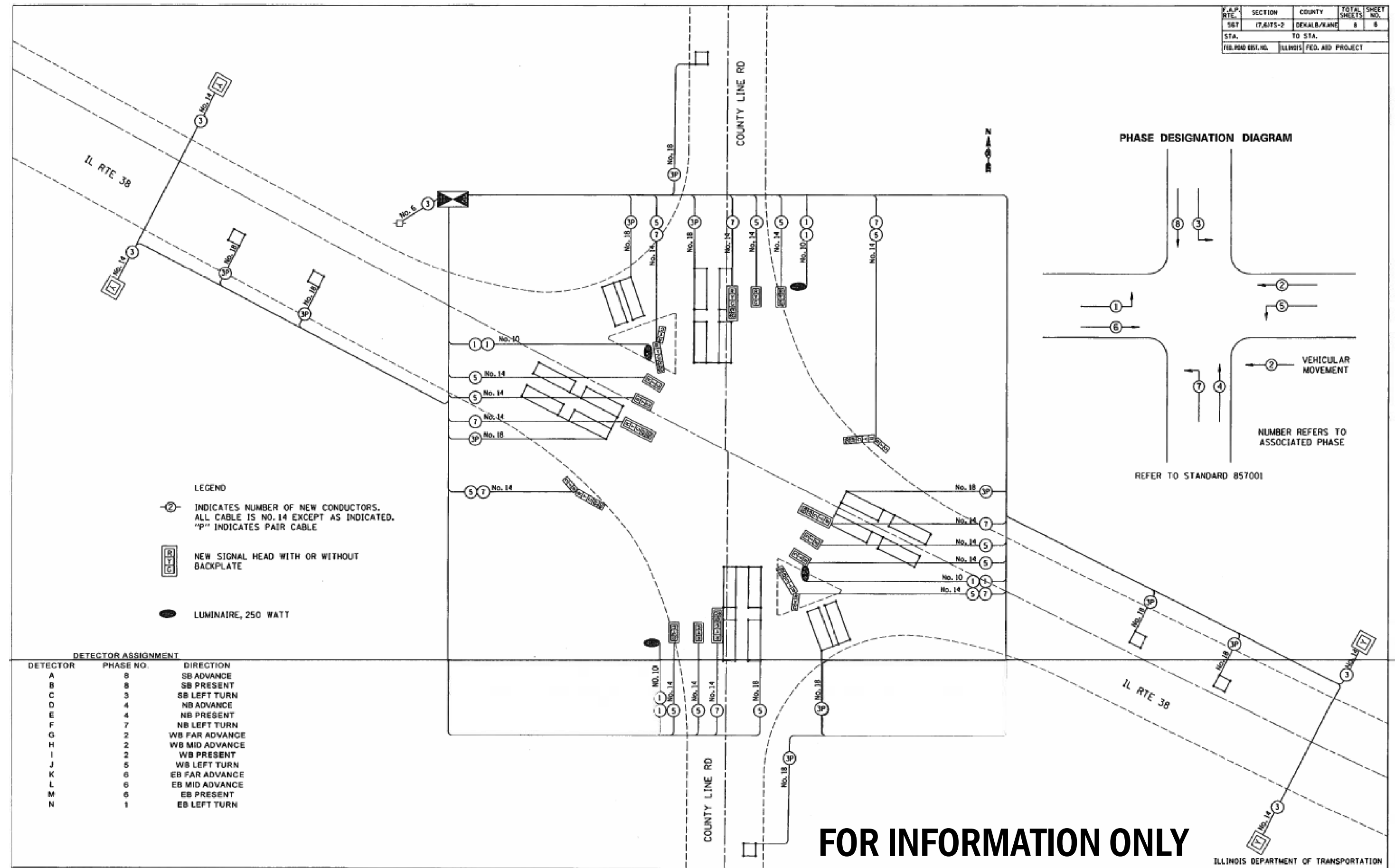
LOCATION #4 EXISTING PLAN DETAILS FOR INTERSECTION OF
IL 38 AND COUNTY LINE RD. (MAPLE PARK)

F.A.U. & F.A.P. RTE.	SECTION	COUNTY	TOTAL SHEETS	SHEET NO.
6088 & 567	(33)ELE & (331,332)ELE	*	13	12
BUREAU & DEKALB			CONTRACT NO. 66L11	

SCALE: SHEET 1 OF 4 SHEETS STA. TO STA.

MODEL: Default
 FILE: Maple_Park_Plan_Sheets.dwg
 PROJECT: 118+00-118+00
 DATE: 7/1/2020

F.A.P. RTE.	SECTION	COUNTY	TOTAL SHEETS	SHEET NO.
567	17.617S-2	DEKALB/KANE	8	8
STA.	TO STA.			
FED. ROAD DIST. NO.	ILLINOIS	FED. AID PROJECT		



- LEGEND**
- ② INDICATES NUMBER OF NEW CONDUCTORS. ALL CABLE IS NO. 14 EXCEPT AS INDICATED. "P" INDICATES PAIR CABLE
 - NEW SIGNAL HEAD WITH OR WITHOUT BACKPLATE
 - LUMINAIRE, 250 WATT

DETECTOR ASSIGNMENT

DETECTOR	PHASE NO.	DIRECTION
A	8	SB ADVANCE
B	8	SB PRESENT
C	3	SB LEFT TURN
D	4	NB ADVANCE
E	4	NB PRESENT
F	7	NB LEFT TURN
G	2	WB FAR ADVANCE
H	2	WB MID ADVANCE
I	2	WB PRESENT
J	6	WB LEFT TURN
K	6	EB FAR ADVANCE
L	6	EB MID ADVANCE
M	6	EB PRESENT
N	1	EB LEFT TURN

FOR INFORMATION ONLY

ILLINOIS DEPARTMENT OF TRANSPORTATION

PLAN SHEETS - CABLE PLANS

MODEL: Default
 FILE: \\bureaucracy.com\dtd\illinois\gov\pww\DOT\Documents\DOT Office\0366111\CADD\0366111-cover.dwg

USER NAME = WOODSHANKRL	DESIGNED -	REVISED -
	DRAWN -	REVISED -
PLOT SCALE = 100,0000' / in.	CHECKED -	REVISED -
PLOT DATE = 7/1/2020	DATE -	REVISED -

**STATE OF ILLINOIS
DEPARTMENT OF TRANSPORTATION**

**LOCATION #4 EXISTING PLAN DETAILS FOR INTERSECTION OF
IL 38 AND COUNTY LINE RD. (MAPLE PARK)**

SCALE: SHEET 4 OF 4 SHEETS STA. TO STA.

F.A.U. & F.A.P. RTE.	SECTION	COUNTY	TOTAL SHEETS	SHEET NO.
6088 & 567	(33)ELE & (331,332)ELE	*	13	13
*BUREAU & DEKALB			CONTRACT NO. 66L11	
ILLINOIS		FED. AID PROJECT		