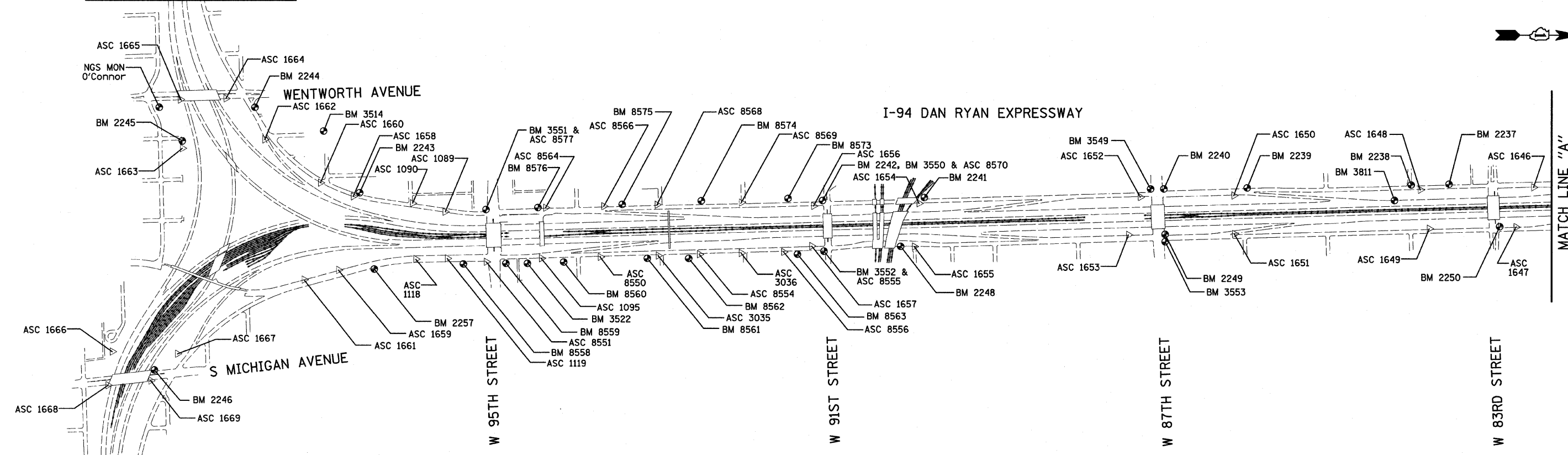
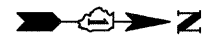


F.A.I. RTE.	SECTION	COUNTY	TOTAL SHEETS	SHEET NO.
94	2005-069 LS	COOK	60	12
STA. 1255+15 (SB I-94)		TO STA. 1263+40 (SB I-94)		
FED. ROAD DIST. NO.		ILLINOIS	FED. AID PROJECT	

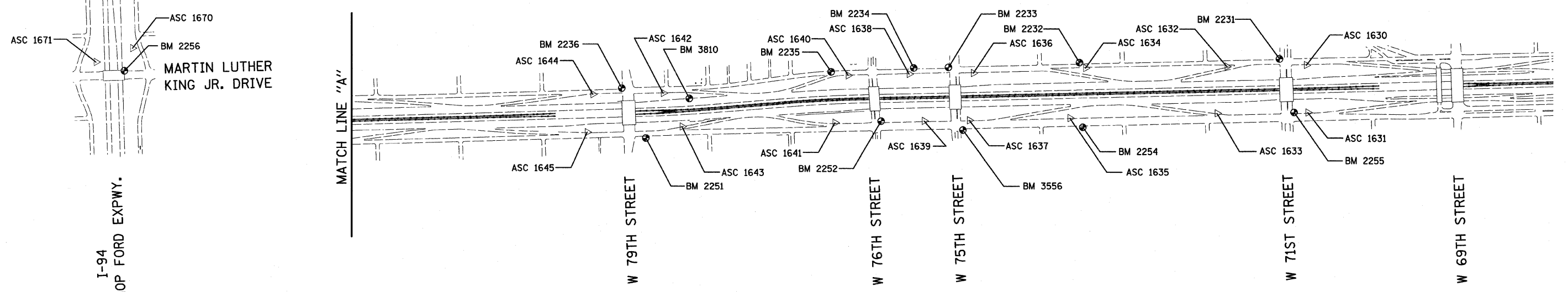
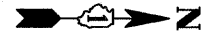
60A75

I-57
EXPWY

SEE SHEET 2 OF 7
MATCH LINE "B"



I-94 DAN RYAN EXPRESSWAY



I-94
BISHOP FORD EXPWY.

MARTIN LUTHER
KING JR. DRIVE

MATCH LINE "A"

MATCH LINE "A"

American Surveying Consultants, P.C.
SURVEYING-ENGINEERING-GEODESISTS-PROPERTY SURVEYORS
1827 FLOOR, 840 W. WASHINGTON, IL 60611 805 S. NORTHWIND, ELSTON, IL 60611
815-264-2821

REVISIONS	
NAME	DATE

ILLINOIS DEPARTMENT OF TRANSPORTATION
F.A.I. 94 (DAN RYAN EXPRESSWAY)
SURVEY TIES FOR CONTROL POINTS
SHEET 1 OF 7
SCALE: 1"=400'
DATE: JUNE 20, 2008
DRAWN BY: GSP
CHECKED BY: MMW

6/23/2008 9:38:15 AM