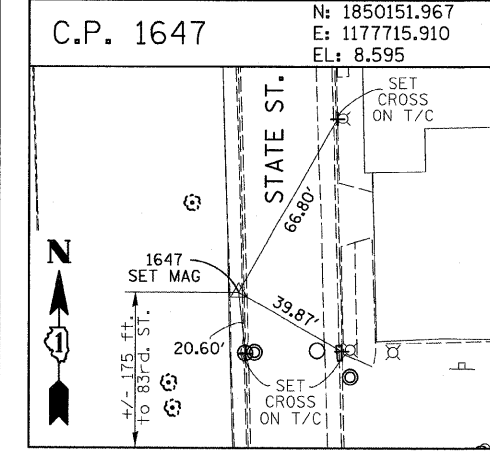
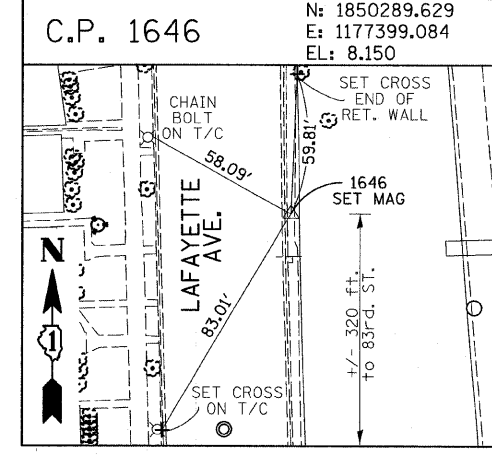
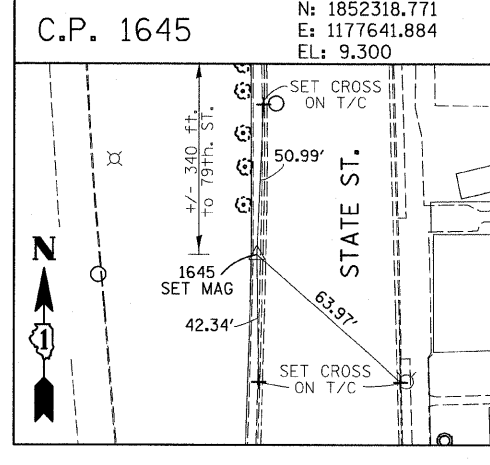
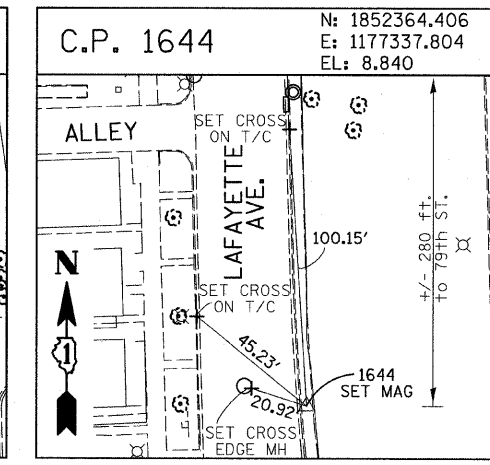
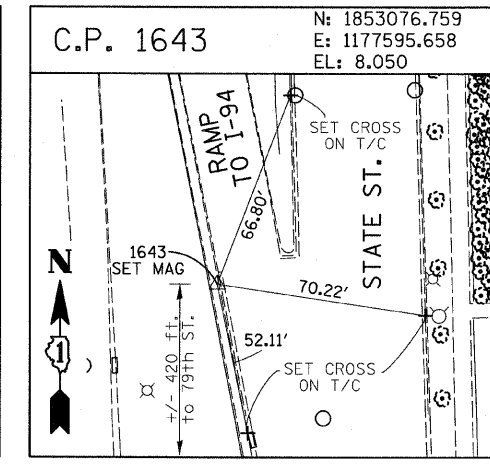
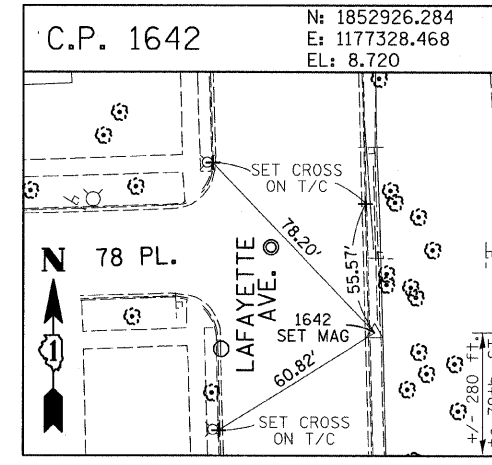
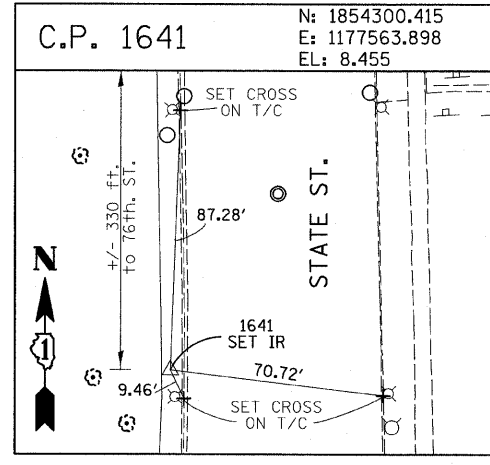
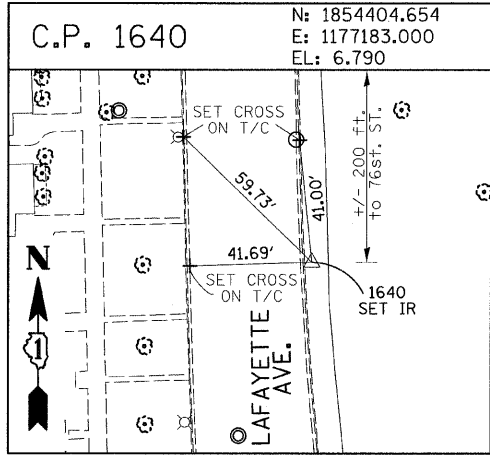
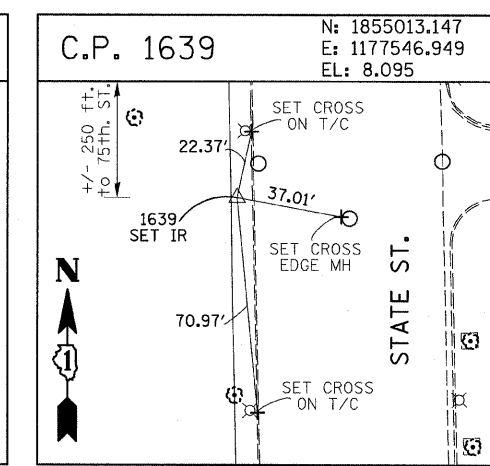
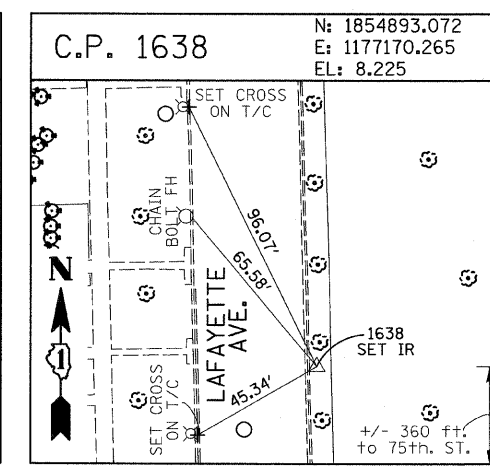
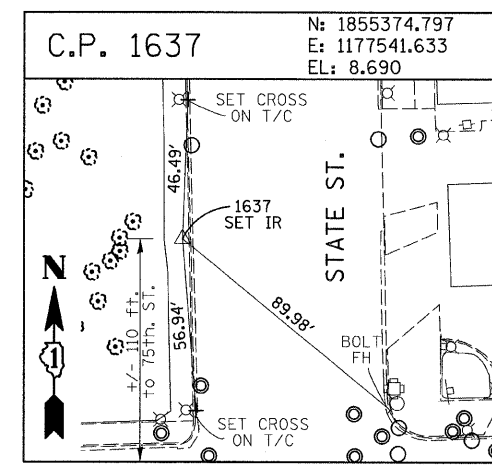
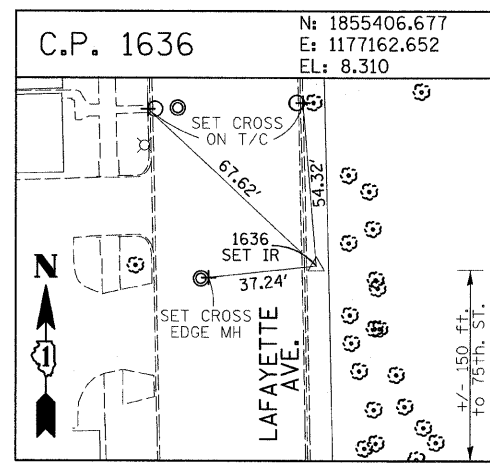
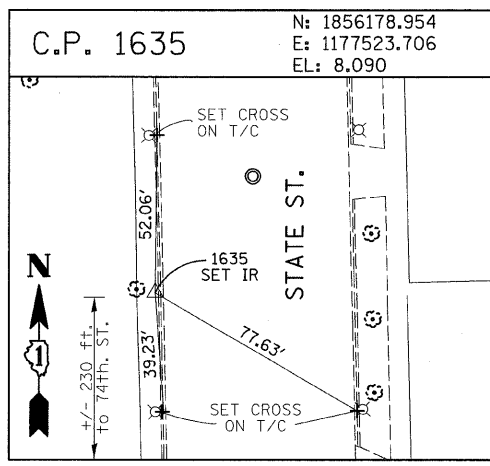
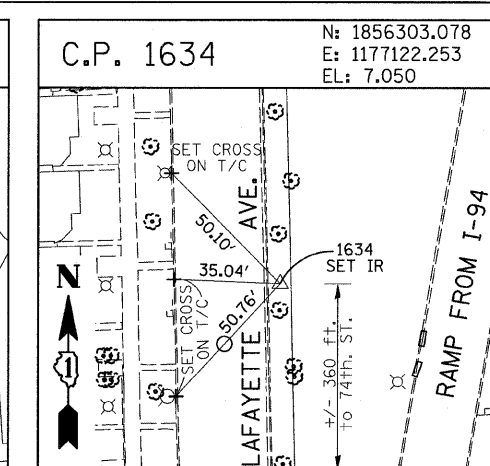
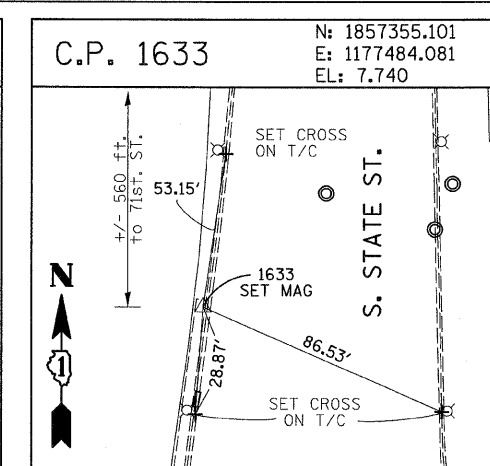
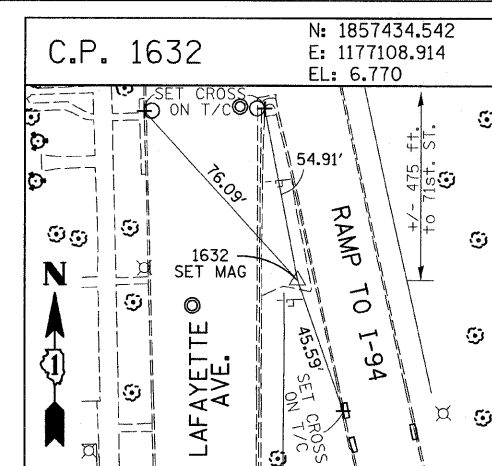
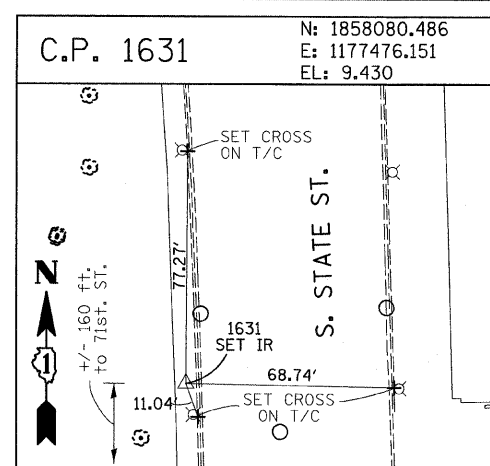
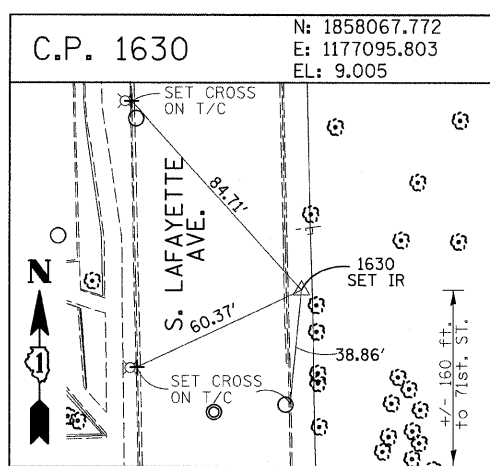


F.A.I. RTE.	SECTION	COUNTY	TOTAL SHEETS	SHEET NO.
94	2005-069 LS	COOK	60	14
STA. 2254+81 (NB I-94) TO STA. 2263+45 (NB I-94)				
STA. 1295+15 (SB I-94) TO STA. 1263+40 (SB I-94)				
FED. ROAD DIST. NO. ILLINOIS FED. AID PROJECT				

60A75



American Surveying Consultants, P.C.  
 1537 Plank Rd., Chicago, IL 60601  
 312-467-0231

REVISIONS	
NAME	DATE

ILLINOIS DEPARTMENT OF TRANSPORTATION  
 F.A.I. 94 (DAN RYAN EXPRESSWAY)  
 SURVEY TIES FOR CONTROL POINTS  
 SHEET 3 OF 7  
 SCALE: 1"=30'  
 DATE: JUNE 20, 2008  
 DRAWN BY: GSP  
 CHECKED BY: MMW

6/23/2008 9:36:17 AM