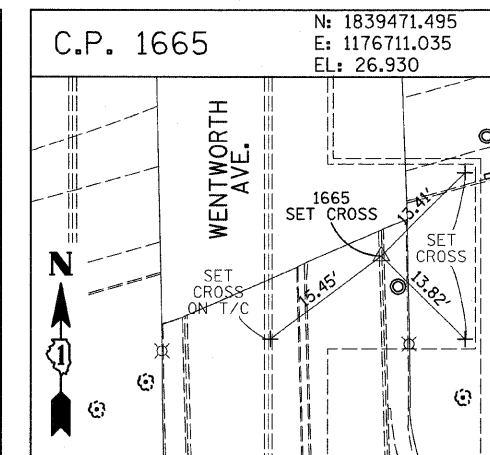
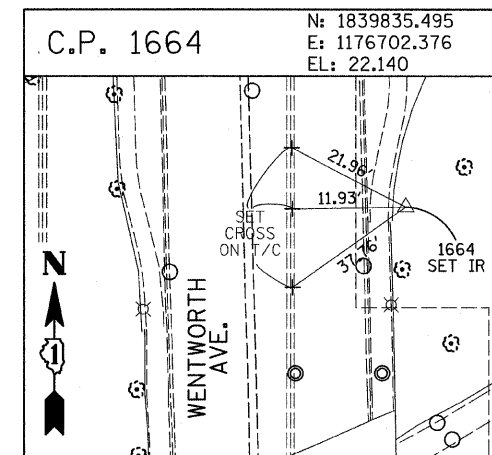
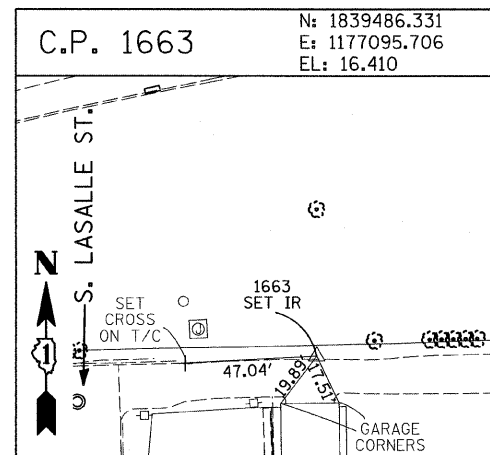
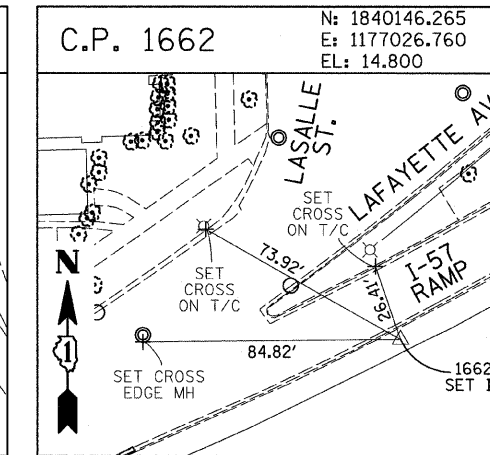
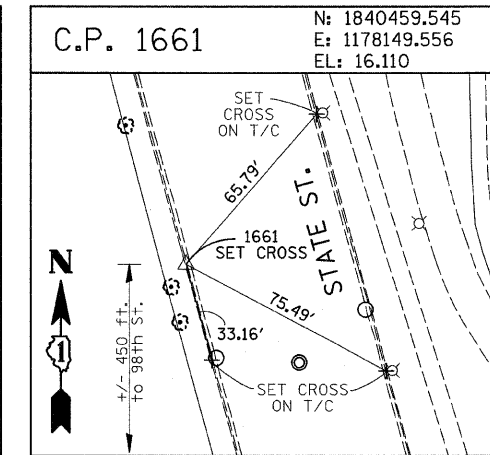
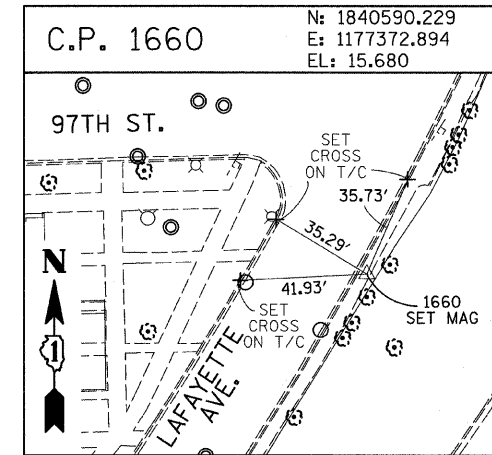
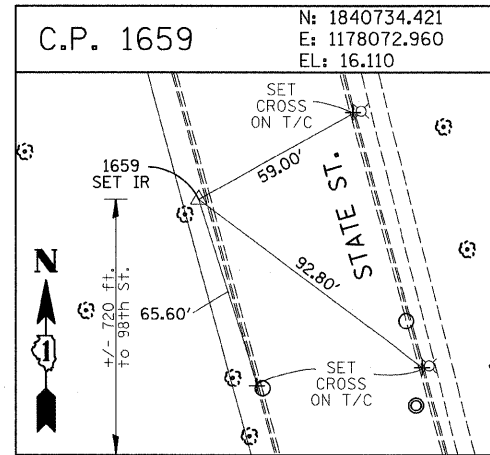
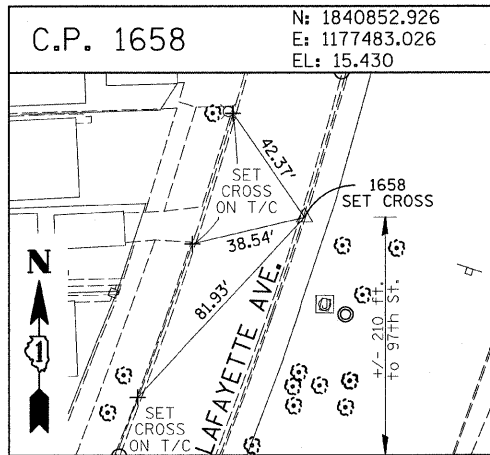
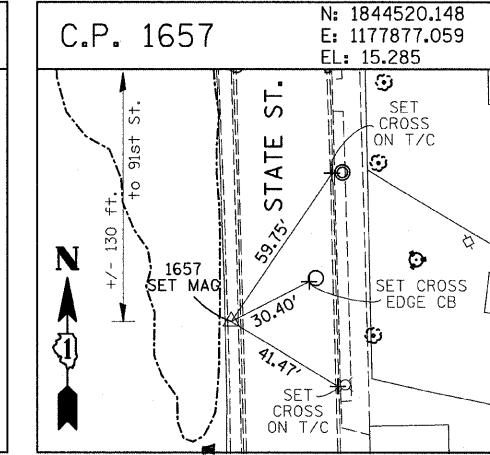
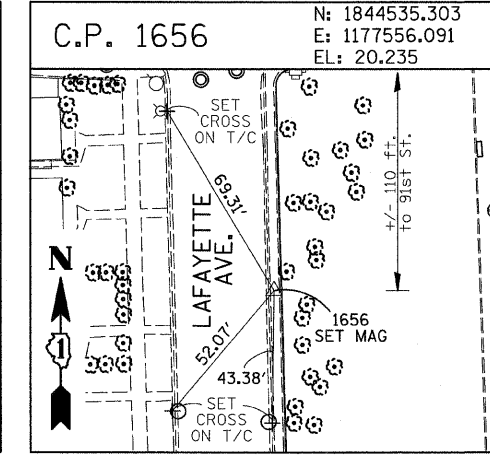
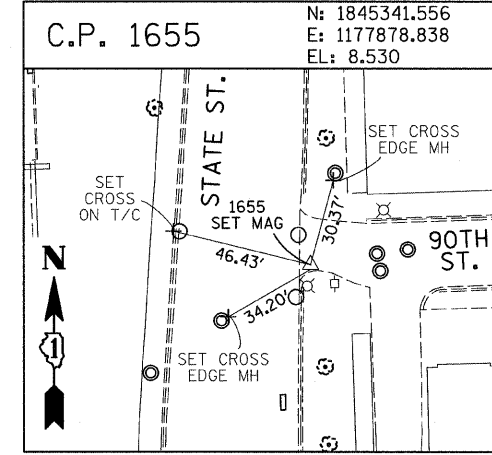
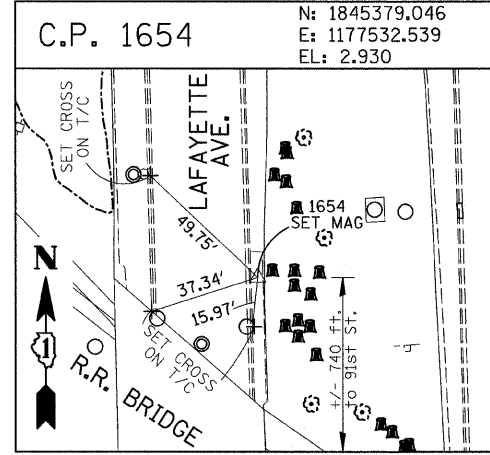
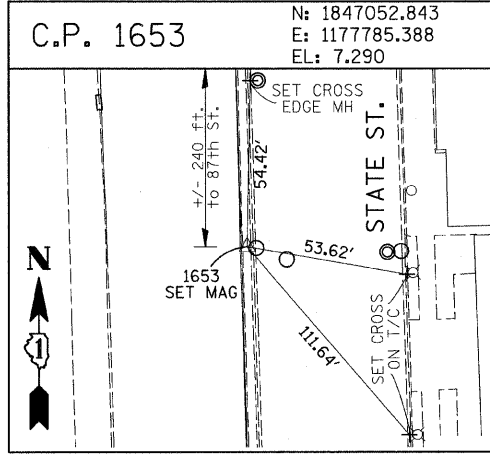
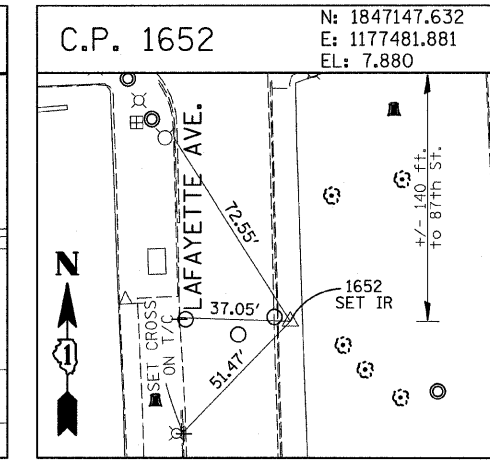
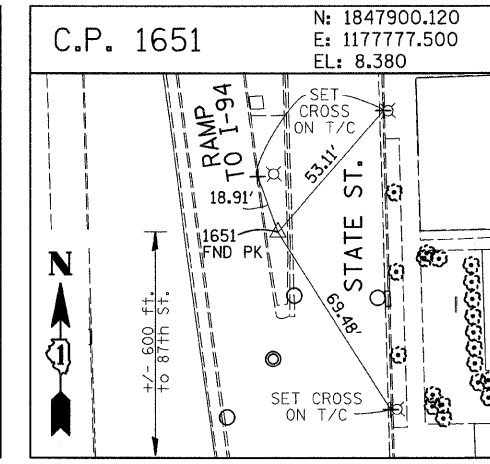
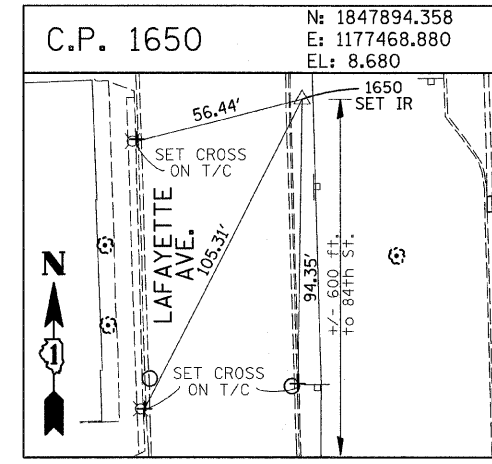
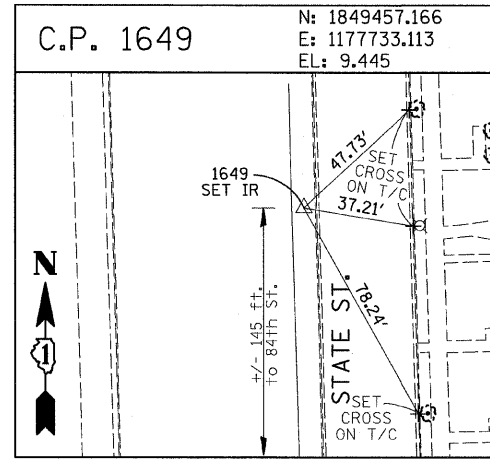
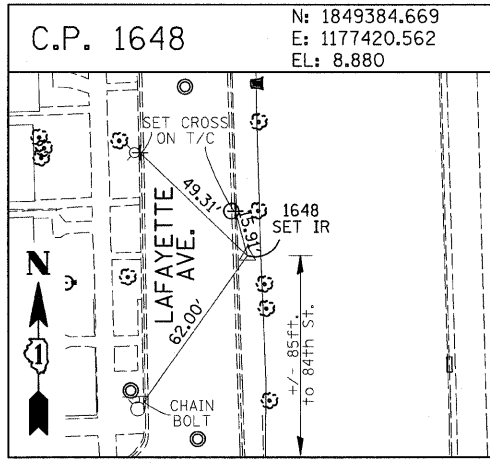


F.A.I. RTE.	SECTION	COUNTY	TOTAL SHEETS	SHEET NO.
94	2005-069 LS	COOK	60	15
STA. 1254+00 (SB 1-94) TO STA. 1263+40 (SB 1-94)			2253+45 (NB 1-94)	
FED. ROAD DIST. NO.			ILLINOIS FED. AID PROJECT	

60A75



American Surveying Consultants, P.C.
 1837 Park St., Chicago, IL 60611 800 N. Northwest Highway, Chicago, IL 60611

REVISIONS	
NAME	DATE

ILLINOIS DEPARTMENT OF TRANSPORTATION
 F.A.I. 94 (DAN RYAN EXPRESSWAY)
 SURVEY TIES FOR CONTROL POINTS
 SHEET 4 OF 7
 SCALE: 1"=30'
 DATE: JUNE 20, 2008
 DRAWN BY: GSP
 CHECKED BY: MMW

P:\0237\31\road\2222\1222\08\08.dwg 9:38:18 AM 6/23/2008