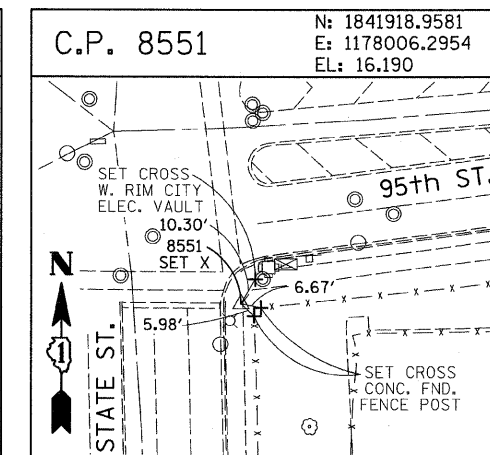
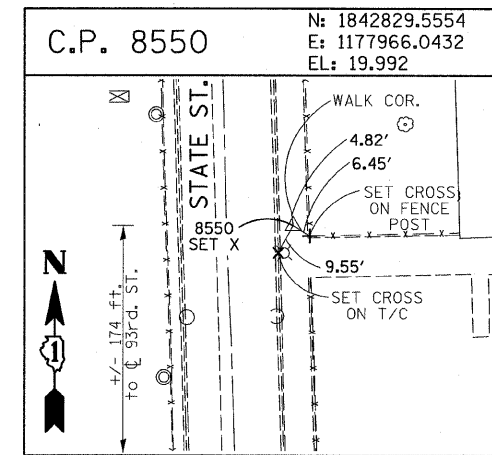
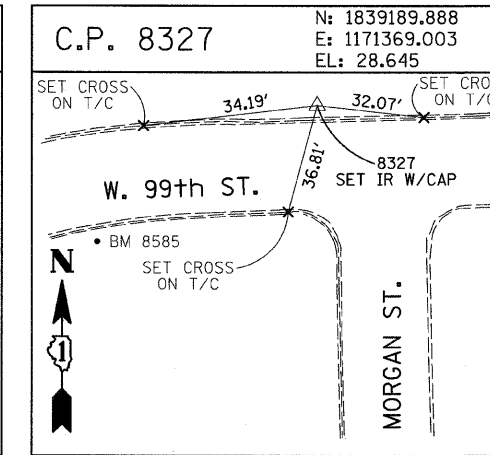
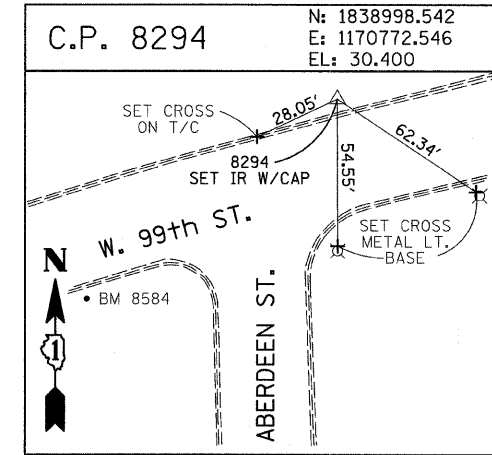
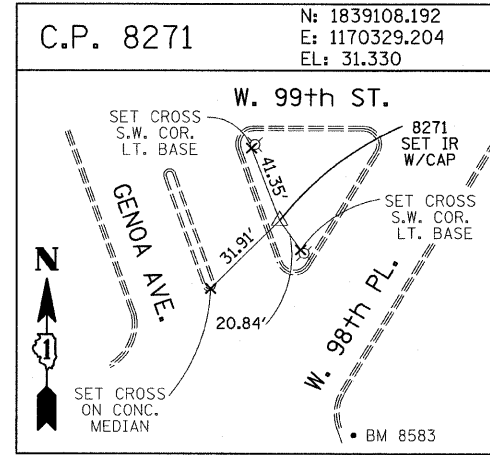
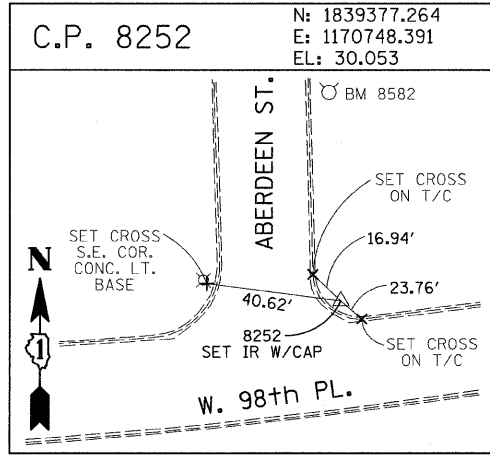
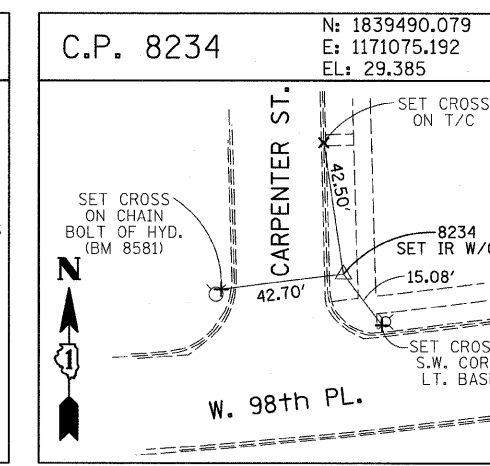
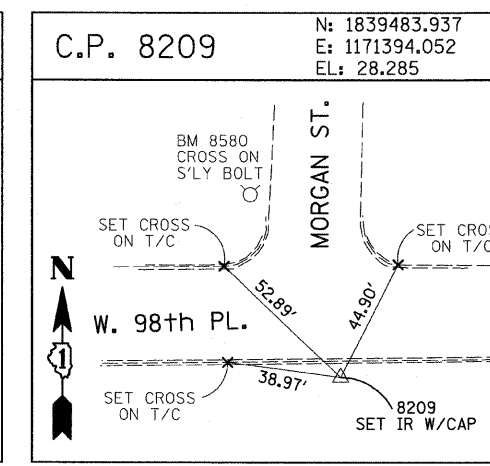
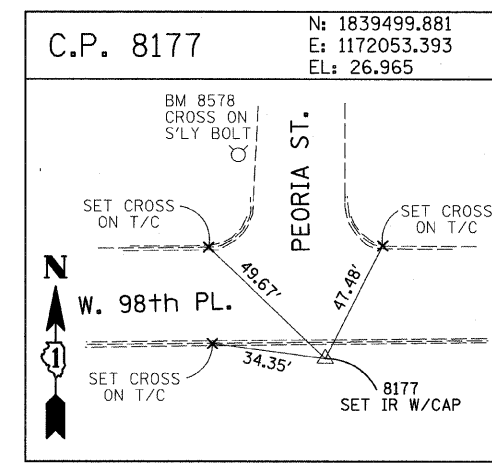
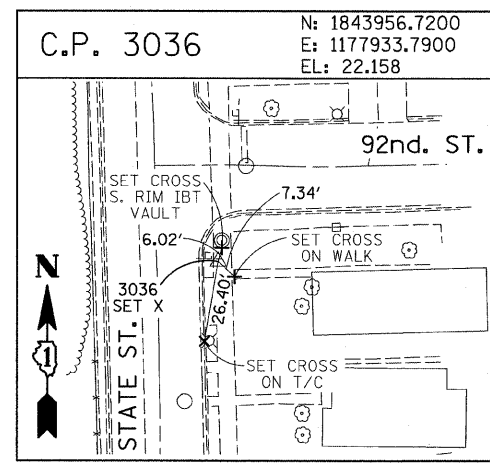
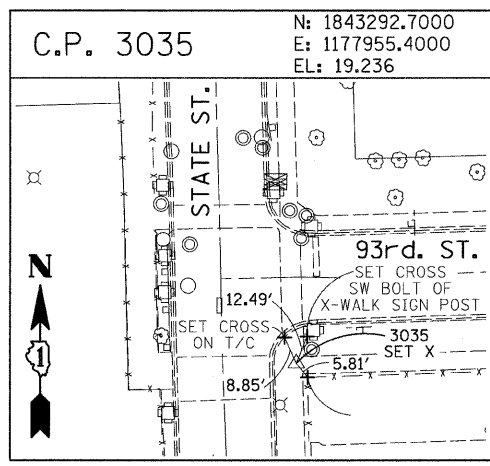
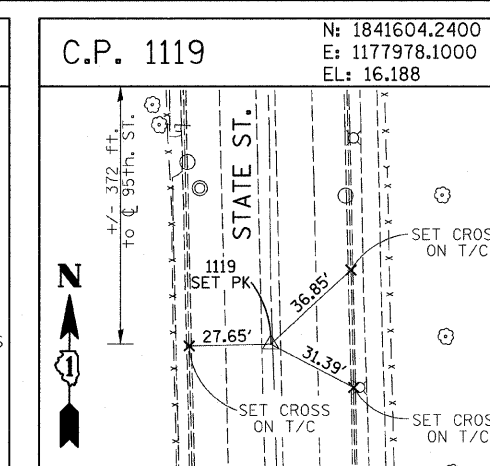
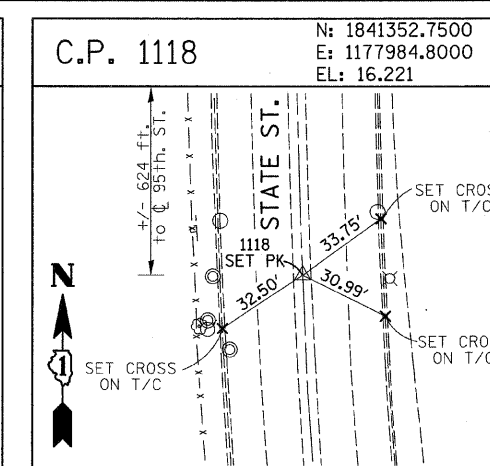
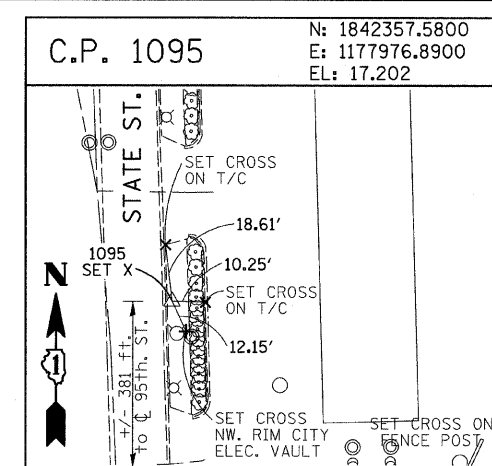
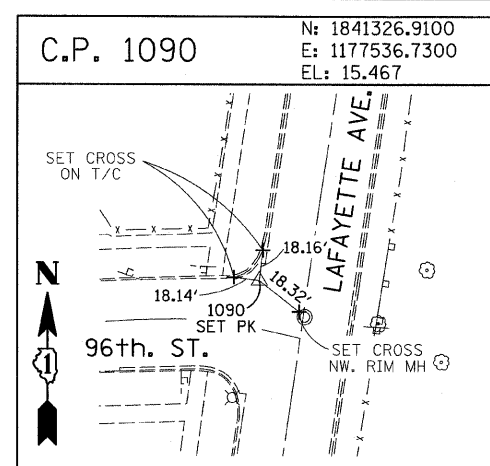
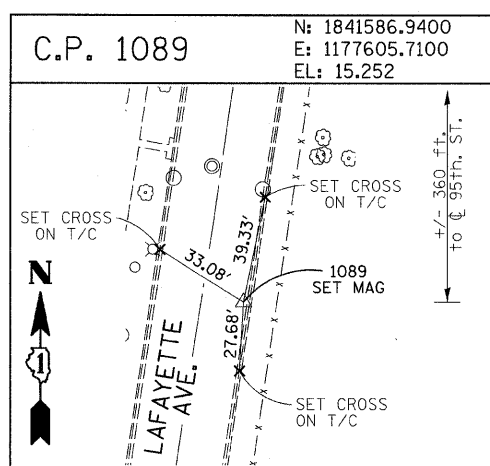


F.A.I. RTE.	SECTION	COUNTY	TOTAL SHEETS	SHEET NO.
94	2005-069 LS	COOK	60	17
STA. 125+15 (SB T-94)		TO STA. 125+45 (NB T-94)		
FED. ROAD DIST. NO.		ILLINOIS FED. AID PROJECT		

60A75



REVISIONS	
NAME	DATE

ILLINOIS DEPARTMENT OF TRANSPORTATION
 F.A.I. 94 (DAN RYAN EXPRESSWAY)
 SURVEY TIES FOR CONTROL POINTS
 SHEET 6 OF 7
 SCALE: 1"=30'
 DATE: JUNE 20, 2008
 DRAWN BY: GSP
 CHECKED BY: MMW

5/23/2008 9:39:22 AM