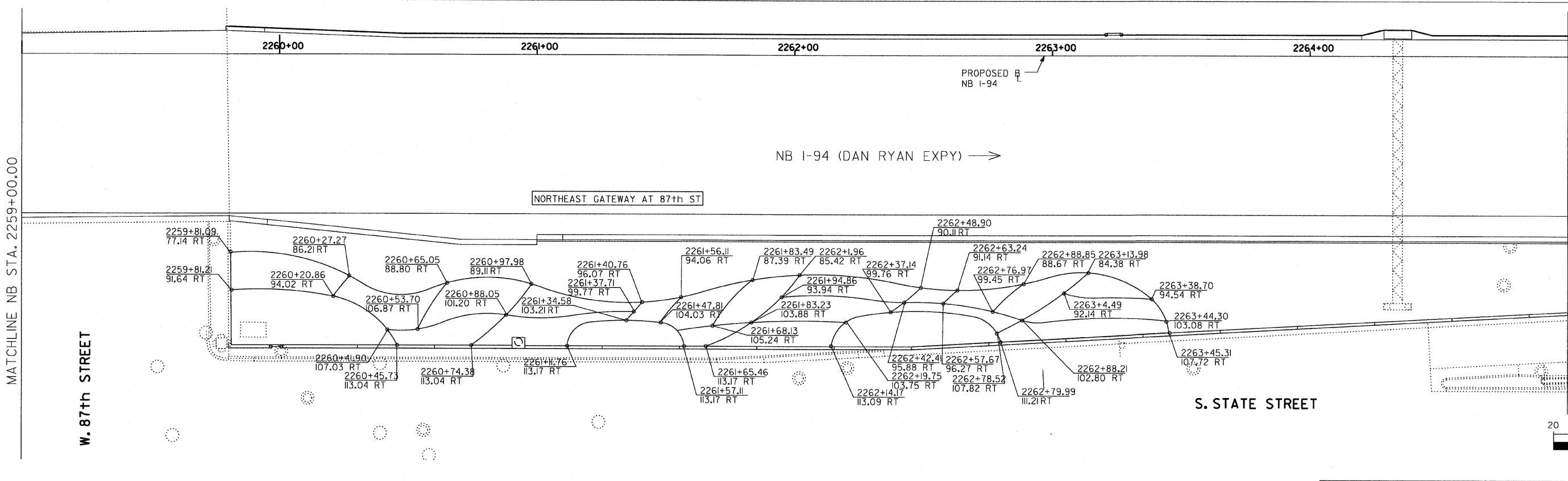
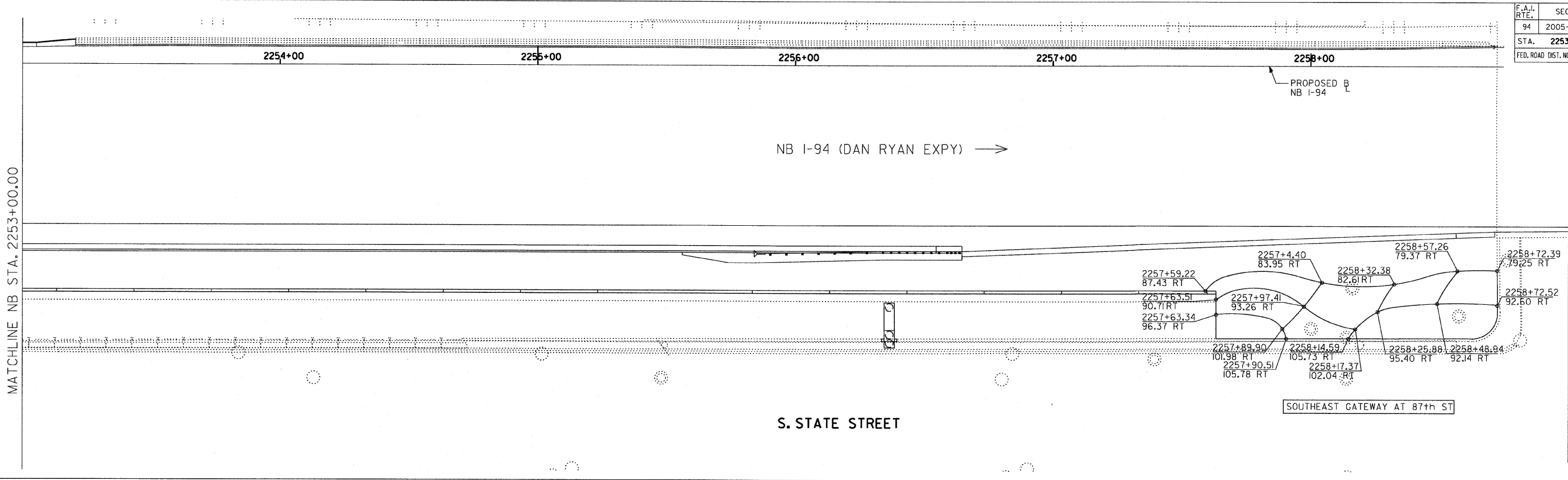


F.A.I. RTE.	SECTION	COUNTY	TOTAL SHEETS	SHEET NO.
94	2005-069 LS	COOK	60	21
STA. 2253+00	TO STA. 2265+00			
FED. ROAD DIST. NO.	ILLINOIS	FED. AID PROJECT	60A75	



**SITE DESIGN GROUP**

**TYLIN INTERNATIONAL**

NOTE: THE LOCATION OF ALL PLANT MATERIAL SHALL BE STAKED BY THE CONTRACTOR FOR APPROVAL BY THE ENGINEER IN FIELD, PRIOR TO INSTALLATION. INDIVIDUAL TREES SHALL BE STAKED WITH IDENTITIES WRITTEN ON STAKES. SHRUB AND PERENNIAL BEDS SHALL BE OUTLINED WITH STAKES AND PAINTED LINES.

REVISIONS	
NAME	DATE

ILLINOIS DEPARTMENT OF TRANSPORTATION  
 F.A.I. 94 (DAN RYAN EXPRESSWAY)  
**87TH STREET GATEWAY LANDSCAPING AND IRRIGATION**  
 PLANTING BED LAYOUT PLANS  
 SE + NE QUADRANTS AT 87TH ST. - NB I-94

SCALE: 1"=20'  
 DATE: JUNE 20, 2008

DRAWN BY: EM  
 CHECKED BY: JO