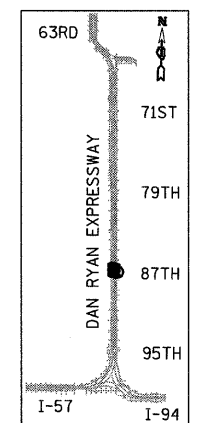
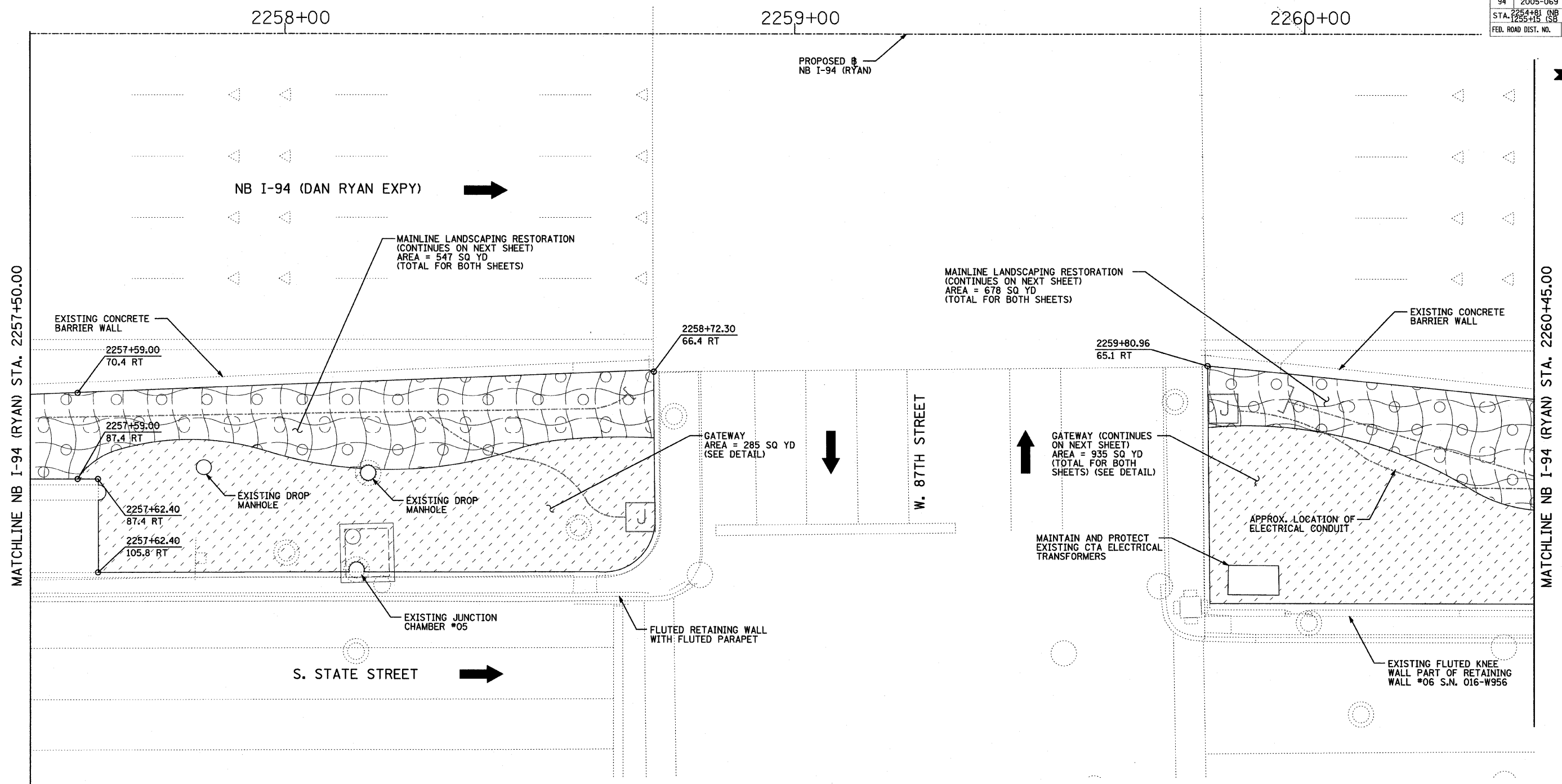


F.A.I. RTE.	SECTION	COUNTY	TOTAL SHEETS	SHEET NO.
94	2005-069 LS	COOK	60	24
STA. 2254+81 (NB I-94)		TO STA. 2263+45 (NB I-94)		
FEB. ROAD DIST. NO.		ILLINOIS	FED. AID PROJECT	

60A75


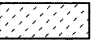



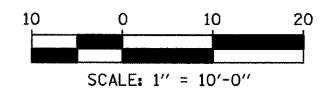
LOCATION MAP

LANDSCAPING GENERAL PLAN NOTES:

1. THE SEEDING DATES FOR BARE EARTH SEEDING OF MIXTURE CLASS 2A SHALL BE FROM APRIL 1 TO JUNE 1 AND FROM AUGUST 15 TO SEPTEMBER 30. ALL SEEDING NOT SOWN ACCORDING TO THE SPECIFIED SEASONAL DATE SHALL REQUIRE PRIOR APPROVAL FROM THE ENGINEER. FAILURE TO SECURE SUCH APPROVAL SHALL RESULT IN THE REJECTION OF THE SEEDING AND REPLACEMENT BY THE CONTRACTOR AS HIS/HER EXPENSE.
2. AREAS TO BE SEEDED BETWEEN NOVEMBER 1 AND APRIL 1 SHALL REQUIRE DORMANT SEEDING, WHICH SHALL BE INCLUDED IN THE COST OF SEEDING CLASS 2A.
3. LAYOUT OF LANDSCAPED AREAS WILL REQUIRE APPROVAL OF THE ENGINEER PRIOR TO SEEDING AND PLANTING.

LEGEND:

-  EROSION CONTROL BLANKET, SEEDING, CLASS 2A, NITROGEN, PHOSPHORUS, AND POTASSIUM FERTILIZER NUTRIENTS
-  GATEWAY AREA (SEE LANDSCAPE PLANS)
-  DIRECTION OF TRAFFIC



REVISIONS	
NAME	DATE

ILLINOIS DEPARTMENT OF TRANSPORTATION
 F.A.I. 94 (DAN RYAN EXPRESSWAY)
 MAINLINE LANDSCAPING RESTORATION
 SE & NE QUADRANTS AT 87TH ST - NB I-94
 STA. 2257+50.00 TO STA. 2260+45.00
 SHEET 1 OF 2

SCALE: 1"=10'-0"
 DATE: JUNE 20, 2008

DRAWN BY: JDF
 CHECKED BY: JPM

TYLIN INTERNATIONAL

P:\02373\Road\222\Var\2260\39.dwg 6/23/2008 3:58:17 PM