

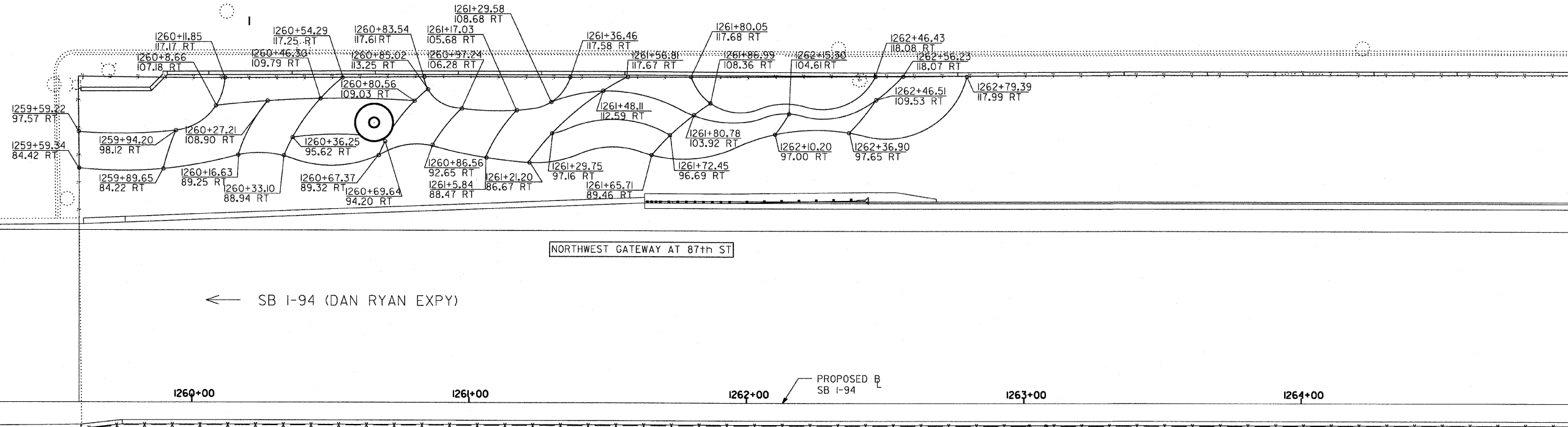
F.A.I. RTE.	SECTION	COUNTY	TOTAL SHEETS	SHEET NO.
94	2005-069 LS	COOK	60	30
STA. 1259+00		TO STA. 1265+00		
FED. ROAD DIST. NO.	ILLINOIS	FED. AID PROJECT		

S. LAFAYETTE AVENUE

W. 87th STREET

MATCHLINE SB STA. 1259+00.00

MATCHLINE SB STA. 1265+00.00

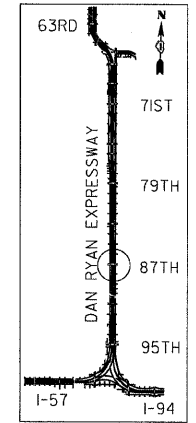
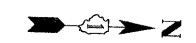


NORTHWEST GATEWAY AT 87th ST

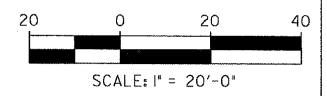
← SB I-94 (DAN RYAN EXPY)

1260+00 1261+00 1262+00 1263+00 1264+00

PROPOSED B SB I-94



LOCATION MAP



SITE DESIGN GROUP
TYLIN INTERNATIONAL

NOTE: THE LOCATION OF ALL PLANT MATERIAL SHALL BE STAKED BY THE CONTRACTOR FOR APPROVAL BY THE ENGINEER IN FIELD, PRIOR TO INSTALLATION. INDIVIDUAL TREES SHALL BE STAKED WITH IDENTITIES WRITTEN ON STAKES. SHRUB AND PERENNIAL BEDS SHALL BE OUTLINED WITH STAKES AND PAINTED LINES.

REVISIONS	
NAME	DATE

ILLINOIS DEPARTMENT OF TRANSPORTATION
F.A.I. 94 (DAN RYAN EXPRESSWAY)
87TH STREET GATEWAY LANDSCAPING AND IRRIGATION
PLANTING BED LAYOUT PLANS
NW QUADRANTS AT 87TH ST. - SB I-94
SCALE: 1"=20' DRAWN BY: EM
DATE: June 20, 2008 CHECKED BY: JO

\$DATE\$