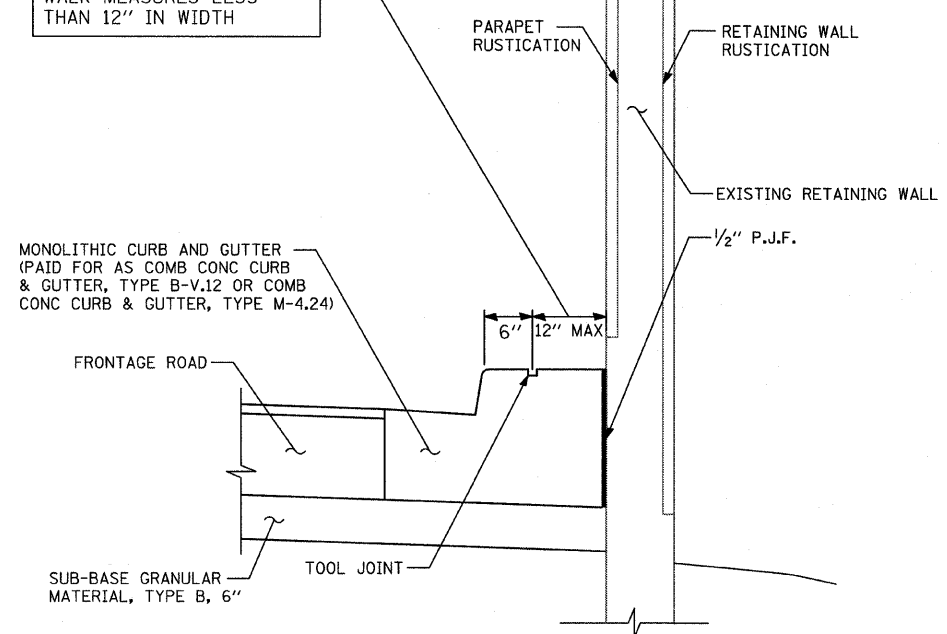
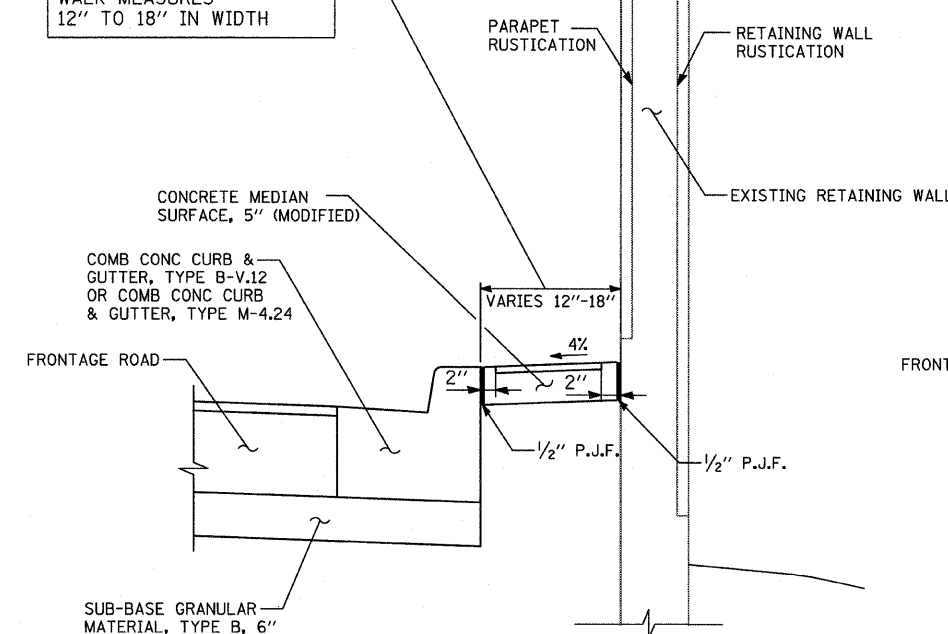


**NOTE:**  
THIS OPTION WILL BE USED WHEN THE CARRIAGE WALK MEASURES LESS THAN 12" IN WIDTH



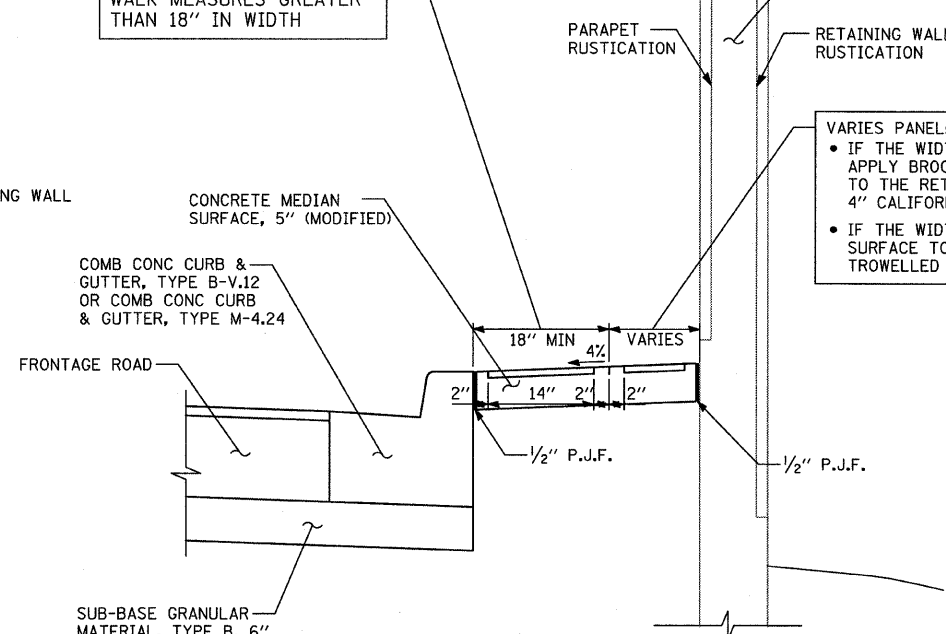
**SECTION - CARRIAGE WALK "A"**  
AREA <12" WIDE

**NOTE:**  
THIS OPTION WILL BE USED WHEN THE CARRIAGE WALK MEASURES 12" TO 18" IN WIDTH



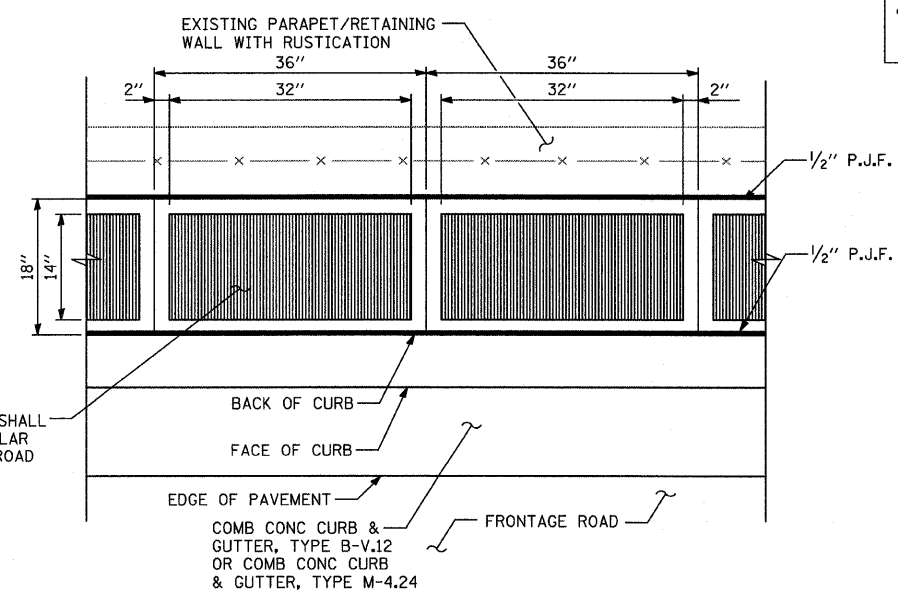
**SECTION - CARRIAGE WALK "B"**  
AREA 12" TO 18" WIDE

**NOTE:**  
THIS OPTION WILL BE USED WHEN THE CARRIAGE WALK MEASURES GREATER THAN 18" IN WIDTH



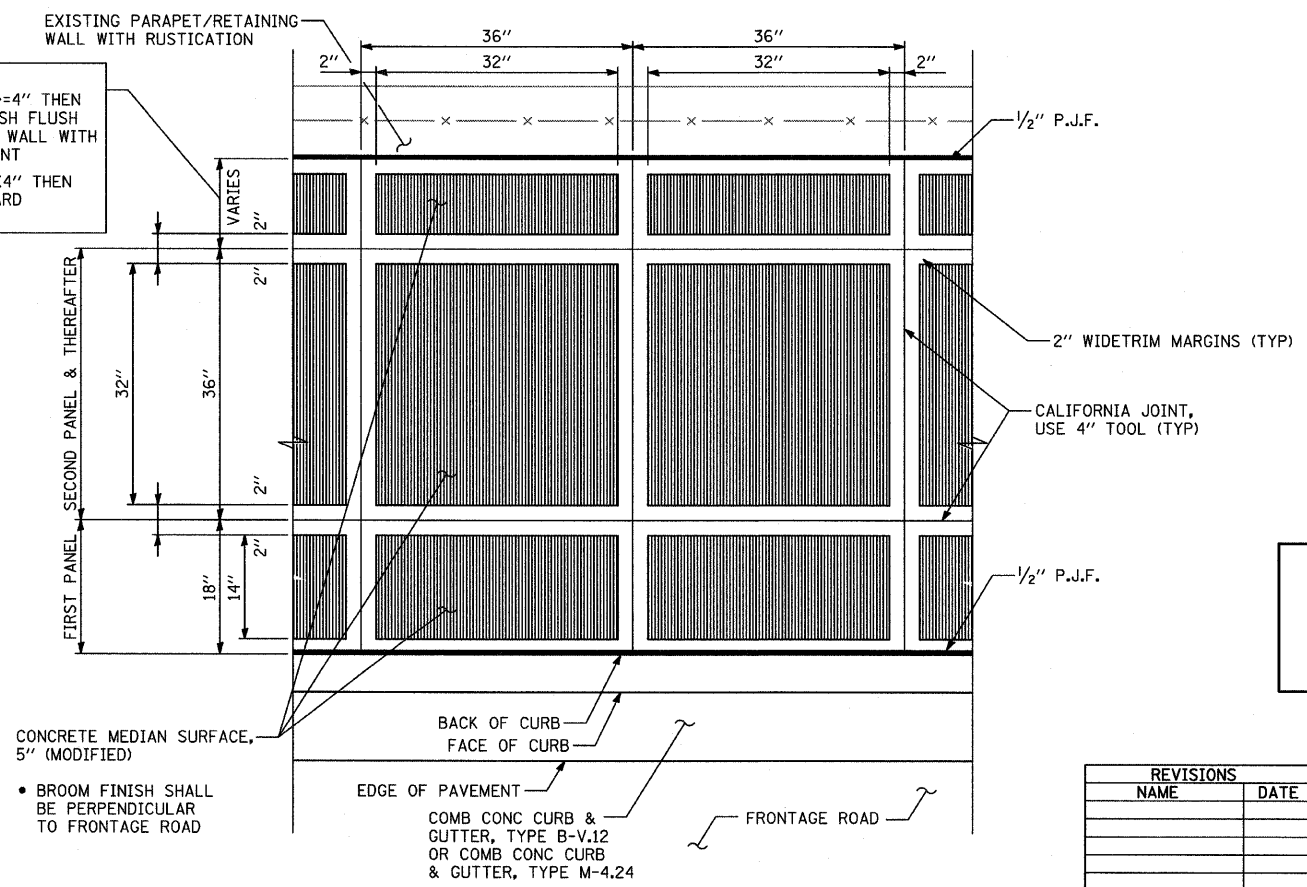
**SECTION - CARRIAGE WALK "C"**  
AREA >18" WIDE

**VARIES PANEL:**  
• IF THE WIDTH IS >=4" THEN APPLY BROOM FINISH FLUSH TO THE RETAINING WALL WITH 4" CALIFORNIA JOINT  
• IF THE WIDTH IS <4" THEN SURFACE TO BE HARD TROWELLED (SEE DETAIL "A")



**PLAN DETAIL "B": COORDINATE WITH CARRIAGE WALK "B"**  
CALIFORNIA FINISH

**VARIES PANEL:**  
• IF THE WIDTH IS >=4" THEN APPLY BROOM FINISH FLUSH TO THE RETAINING WALL WITH 4" CALIFORNIA JOINT  
• IF THE WIDTH IS <4" THEN SURFACE TO BE HARD TROWELLED



**PLAN DETAIL "A": COORDINATE WITH CARRIAGE WALK "C"**  
CALIFORNIA FINISH

**NOTE:**  
NOT ALL ITEMS SHOWN IN THIS DETAIL ARE PROPOSED. SEE PLANS FOR PROPOSED ITEMS.

REVISIONS	
NAME	DATE