

INSIDE ELEVATION OF EAST PARAPET
(Looking East)

NOTE "A"

Existing Reinforcement Bars are to be cleaned and incorporated into the new Construction.

NOTE "B"

Cost for Drill & Grout is included with Reinforcement Bars, Epoxy Coated. See Section 584 of The Standard Specifications for Epoxy Grouted Bars.

NOTE "C"

Roughen Existing Surface (Cost included With Concrete Superstructure).

NOTE "D"

Remove Hatched Portion of Existing 4"x12" Aluminum Drains (Cost included With Plug Existing Deck Drains).

MIN. LAP

(Parapet)
#8 bar = 4'-6"

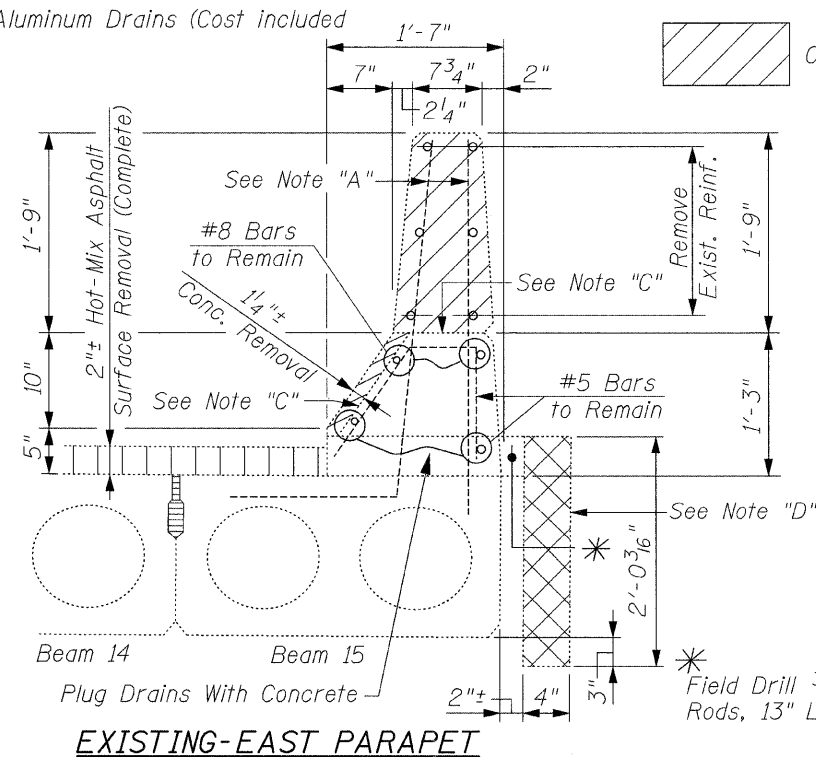
LEGEND:

I.F. = Inside Face
E.F. = Each Face

BILL OF MATERIAL

Bar	No.	Size	Length	Shape	
a3(E)	39	#4	2'-6"	—	
d2(E)	86	#5	2'-7"	—	
d3(E)	86	#5	1'-8"	└	
e(E)	16	#4	19'-0"	—	
e1(E)	2	#8	21'-5"	—	
Concrete Removal				Cu. Yd.	2.2
Concrete Superstructure				Cu. Yd.	3.0
Reinforcement Bars, Epoxy Coated				Pound	770
Plug Existing Deck Drains				Each	6

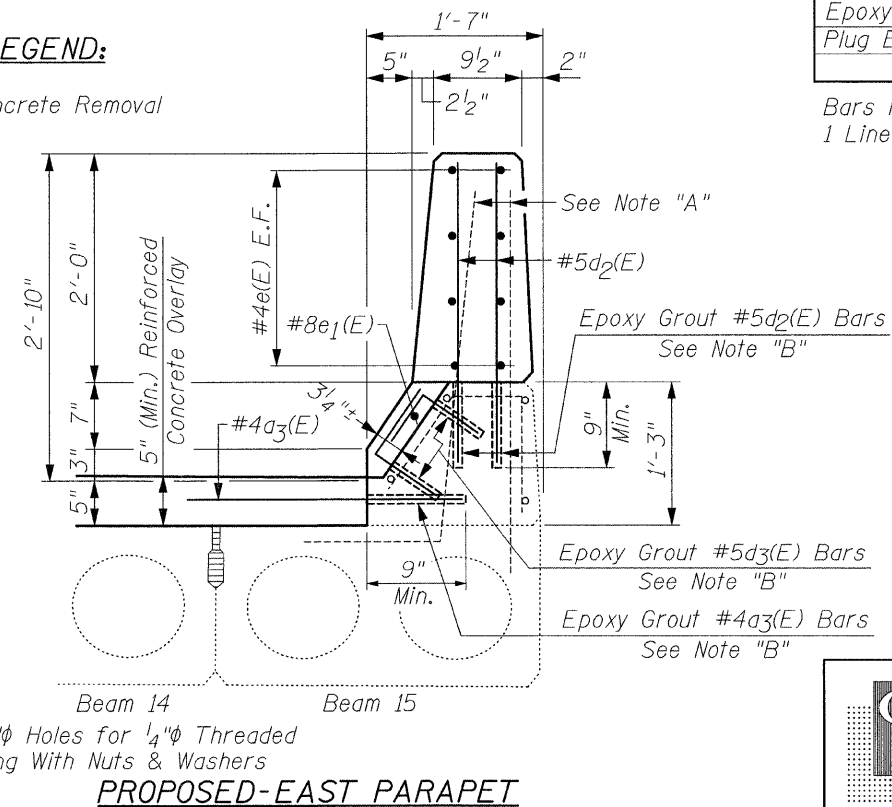
Bars indicated thus 1x2-#8 etc., indicates 1 Line of Bars with 2 Lengths per Line



EXISTING-EAST PARAPET

LEGEND:

Concrete Removal



PROPOSED-EAST PARAPET

