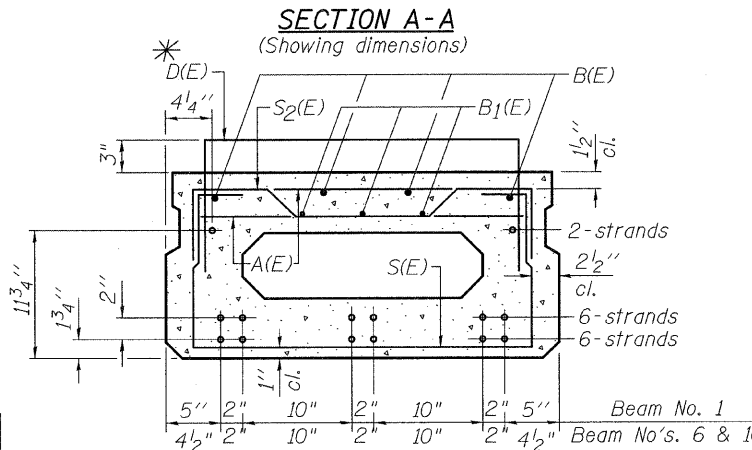
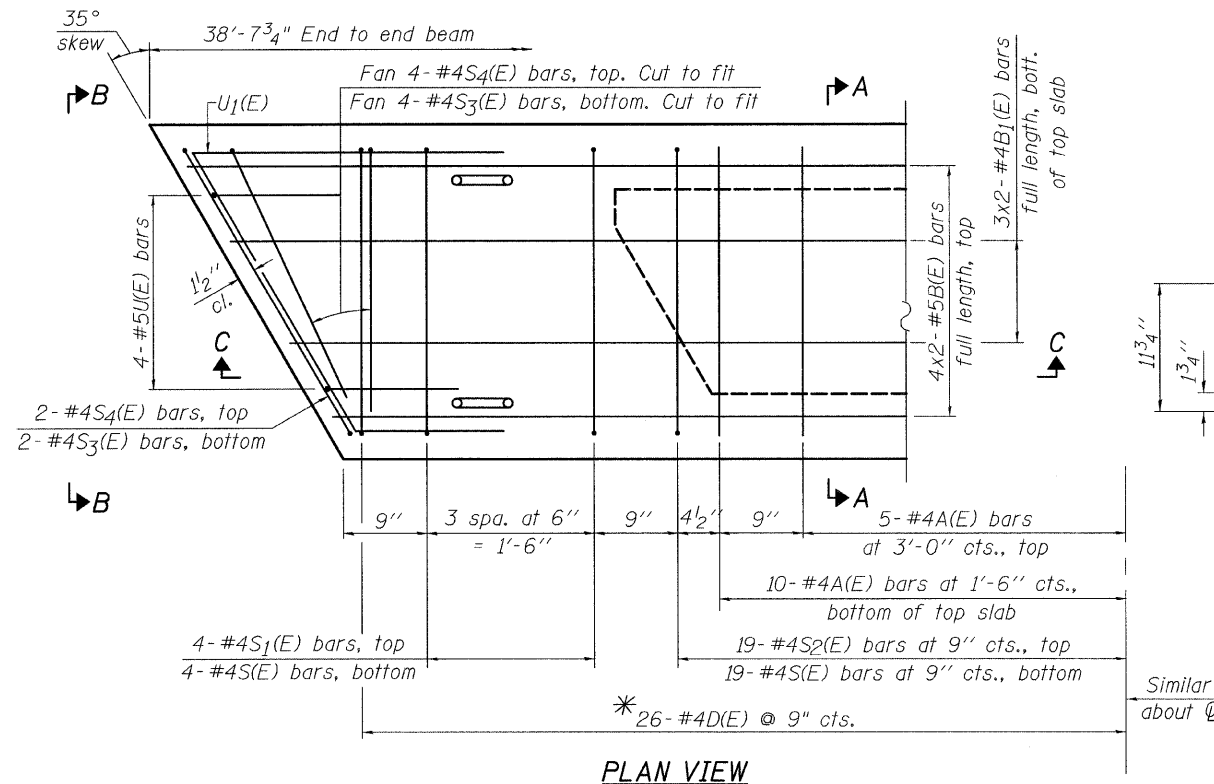


NOTE:
Place the number of strands specified in each row symmetrically about the centerline of beam in the permissible strand locations shown.



SECTION A-A
(Showing reinforcement and permissible strand locations)
6 Strands 1 3/4" Up, 6 Strands 3 3/4" Up, 2 Strands 11 3/4" Up

BAR LIST-35" BEAM
ONE BEAM ONLY
(For information only)

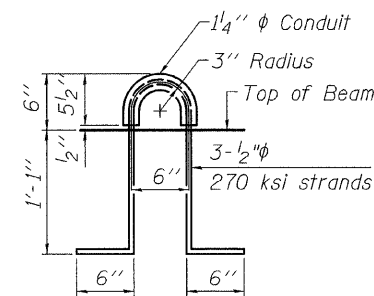
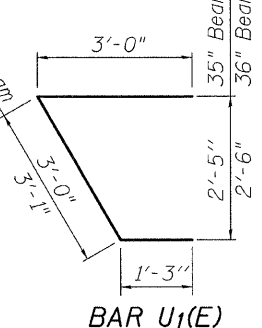
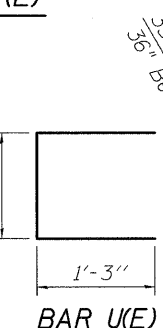
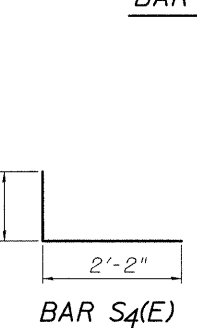
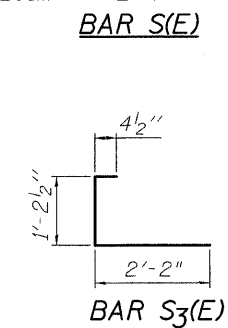
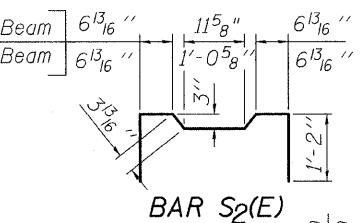
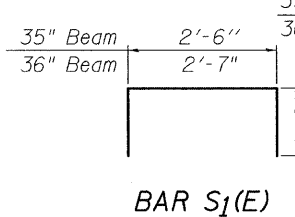
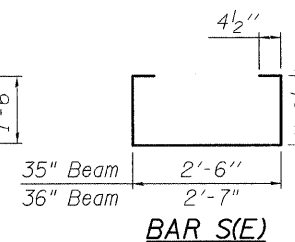
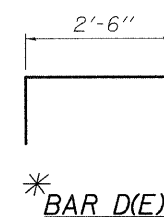
Bar	No.	Size	Length	Shape
A(E)	30	#4	2'-7"	—
B(E)	8	#5	20'-4"	—
B1(E)	6	#4	20'-1"	—
S(E)	46	#4	5'-8"	□
S1(E)	8	#4	4'-10"	□
S2(E)	38	#4	5'-1"	□
S3(E)	12	#4	3'-9"	□
S4(E)	12	#4	3'-4"	□
U(E)	8	#5	3'-8"	□
U1(E)	2	#4	7'-3"	□

BAR LIST-36" BEAM
ONE BEAM ONLY
(For information only)

Bar	No.	Size	Length	Shape
A(E)	30	#4	2'-7"	—
B(E)	8	#5	20'-4"	—
B1(E)	6	#4	20'-1"	—
D(E)	52	#4	5'-6"	□
S(E)	46	#4	5'-9"	□
S1(E)	8	#4	4'-11"	□
S2(E)	38	#4	5'-2"	□
S3(E)	12	#4	3'-9"	□
S4(E)	12	#4	3'-4"	□
U(E)	8	#5	3'-8"	□
U1(E)	2	#4	7'-4"	□

Note: See Sht. S8 for additional Details

MIN. LAP:
#4 Bars = 1'-8"
#5 Bars = 2'-2"



LIFTING LOOP DETAIL

NOTE:
Spacing of S(E) and S2(E) bars may be adjusted up to 4" in the immediate area of the transverse tie diaphragms to miss the block outs for the transverse ties

NOTES:

Prestressing steel shall be uncoated high strength, low relaxation 7-wire strand, Grade 270. The nominal diameter shall be 1/2" and the nominal cross-sectional area shall be 0.153 sq. in. The 1" rods in the transverse tie assembly shall be tightened to a snug fit and the threads set. Pockets on exterior faces of bridge shall be filled with grout after transverse tie assembly is in place.
Reinforcement bars shall conform to ASTM A 706, Grade 60. (See Special Provisions)
Two 1/8" fabric adjusting shims of the dimensions of the exterior bearing pad shall be provided for each bearing pad location.
A minimum 2 1/2" diameter lifting pin shall be used to engage the lifting loops during handling.
Corrosion Inhibitor, per Article 1020.05(b)(12) and 1021.06 of the Standard Specifications, shall be used in the concrete for precast prestressed concrete deck beams.
Compressive strength of prestressed concrete, f'c, shall be 6000 psi.
Compressive strength of prestressed concrete at release, f'ci, shall be 5000 psi.
Bars indicated thus 4x2-#5 etc., indicates 4 lines of Bars with 2 lengths per line.

BILL OF MATERIAL

Precast Prestressed Conc. Deck Bms. (17" depth)	Sq. Ft.	348
---	---------	-----



CHRISTIAN-ROGE & ASSOCIATES, INC.
ENGINEERS / PLANNERS / SURVEYORS
211 W. WACKER DRIVE CHICAGO, IL. 60606
PHONE: (312)372-2023 FAX: (312)372-5274