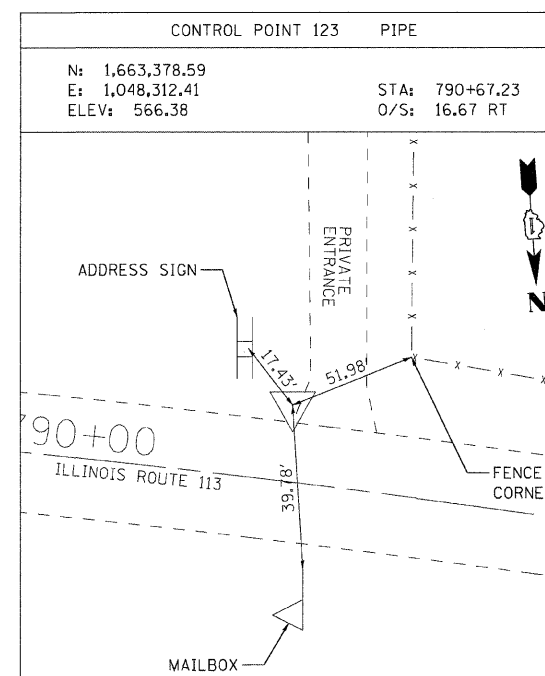
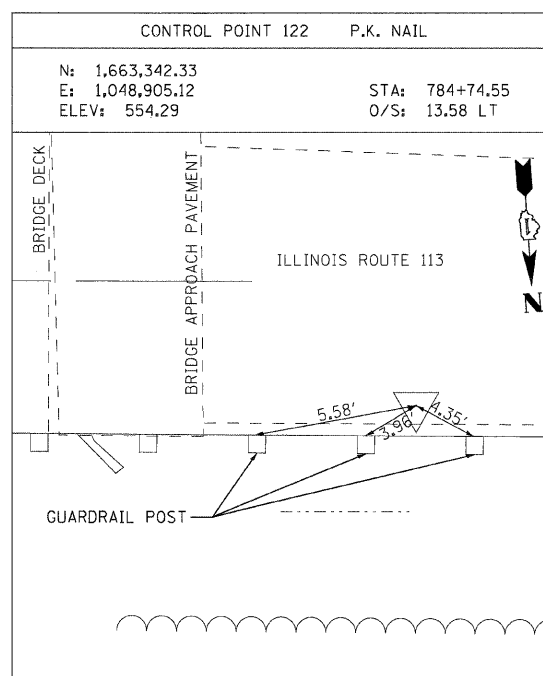
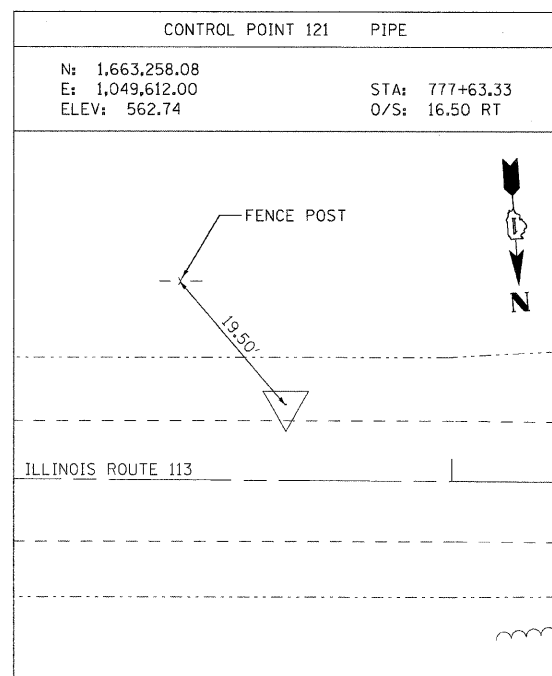
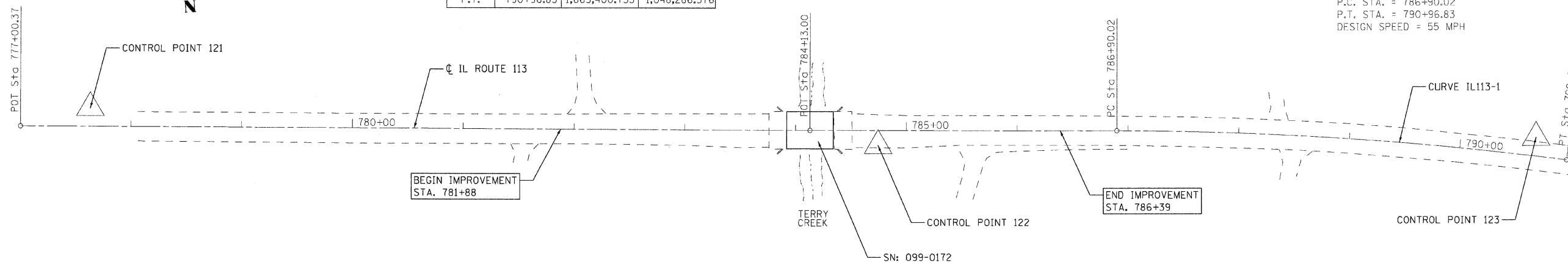


PROJECT COORDINATES

ILLINOIS ROUTE 113 CENTERLINE			
DESCRIPTION	NORTHING	EASTING	
P.O.T.	777+00.37	1,663,269.717	1,049,676.034
P.O.T.	784+13.00	1,663,324.216	1,048,965.490
P.C.	786+90.02	1,663,344.790	1,048,689.231
P.T.	790+96.83	1,663,400.753	1,048,286.576

EXIST. CURVE IL113-1  
 PI STA. = 788+93.70  
 $\Delta = 7^\circ 18' 25''$  (RT)  
 $D = 1^\circ 47' 46''$   
 $R = 3,189.82'$   
 $T = 203.68'$   
 $L = 406.80'$   
 $E = 6.50'$   
 P.C. STA. = 786+90.02  
 P.T. STA. = 790+96.83  
 DESIGN SPEED = 55 MPH



FILE NAME = n:\proj\3329\3329\_22\design\proposals\plan\3329\_22\_04-41\ipm\plan.dgn

**Ciorba Group, Inc.**  
 CONSULTING ENGINEERS  
 5507 North Cumberland Avenue, Suite 402  
 Chicago, Illinois 60656  
 Tel. 773.775.4008 Fax 773.775.4014

USER NAME = jcoleman	DESIGNED - JCC	REVISED -
PLOT SCALE = 50.0000' / IN.	DRAWN - JCC	REVISED -
PLOT DATE = 7/8/2008	CHECKED - MJL	REVISED -
	DATE - 07/09/2008	REVISED -

**STATE OF ILLINOIS  
 DEPARTMENT OF TRANSPORTATION**

**FAS 1317 / ILLINOIS ROUTE 113  
 OVER TERRY CREEK  
 ALIGNMENT AND CONTROL POINTS**

SCALE: 1"=50' SHEET NO. OF SHEETS STA. TO STA.

F.A.S. RTE. 1317	SECTION 111 B-2	COUNTY WILL	TOTAL SHEETS 32	SHEET NO. 4
FED. ROAD DIST. NO. ILLINOIS FED. AID PROJECT			CONTRACT NO. 60D86	