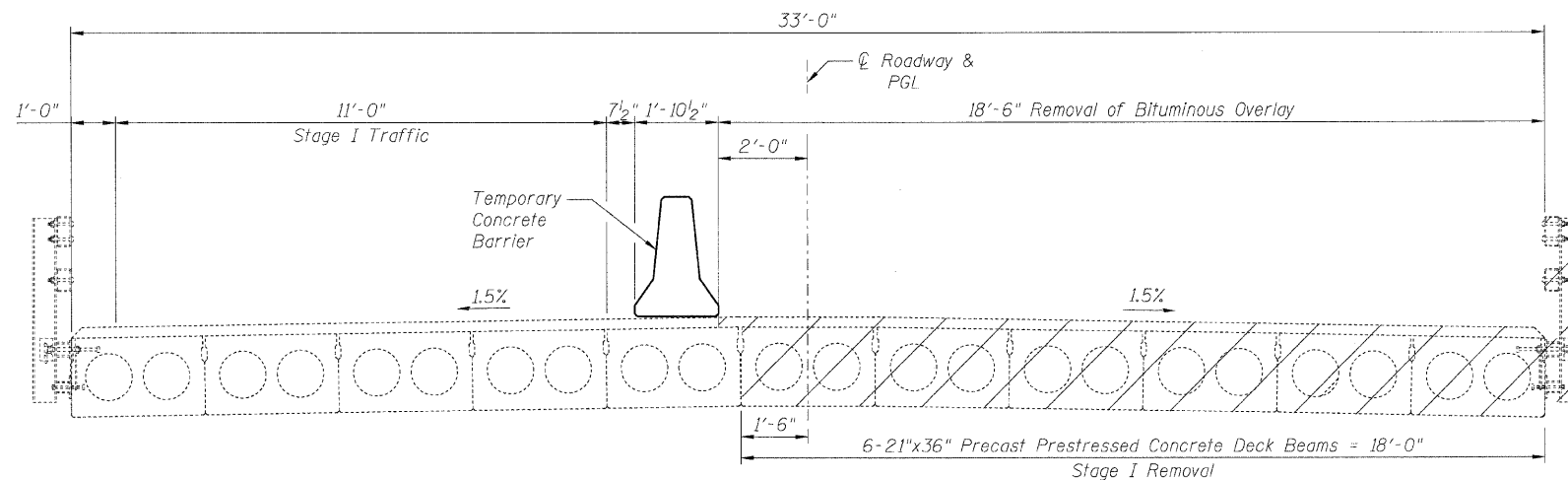
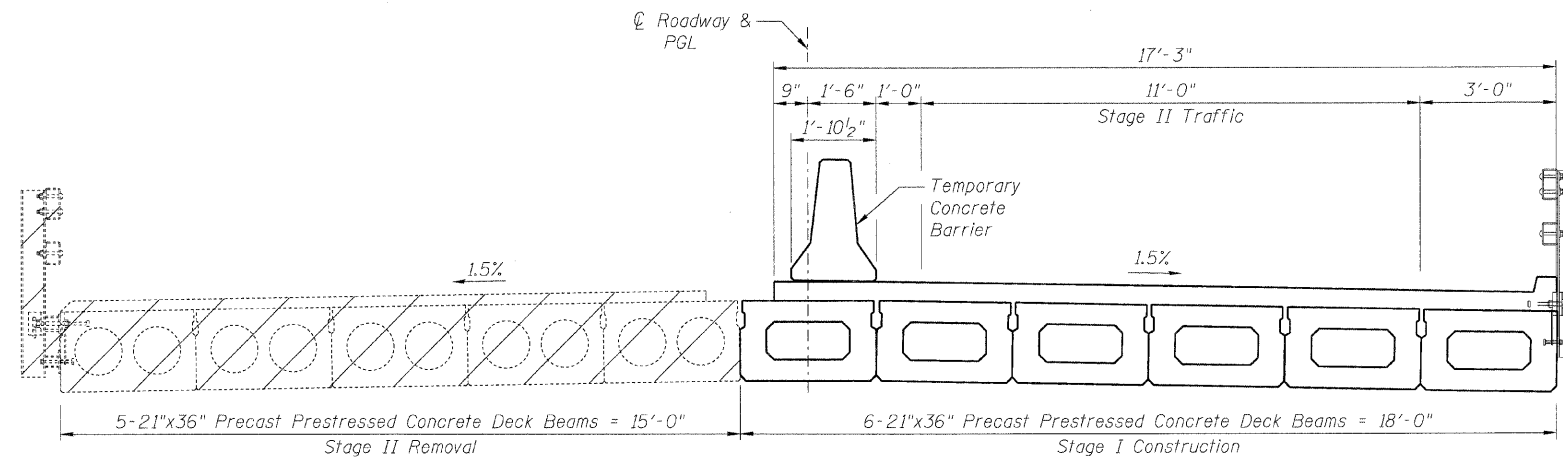


STATE OF ILLINOIS
DEPARTMENT OF TRANSPORTATION



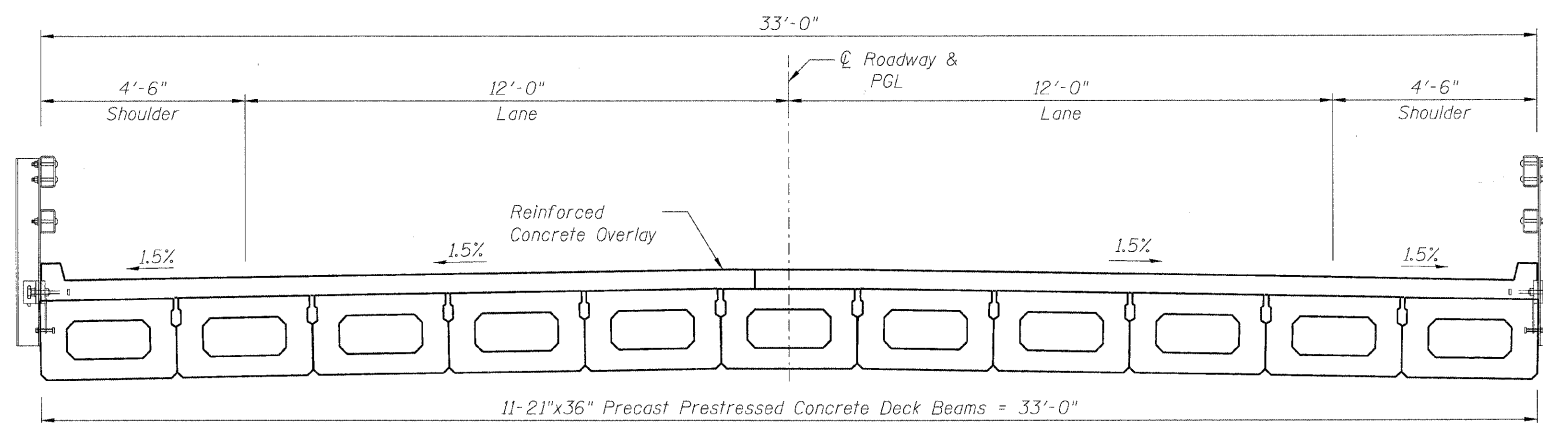
STAGE I REMOVAL

(Looking West)



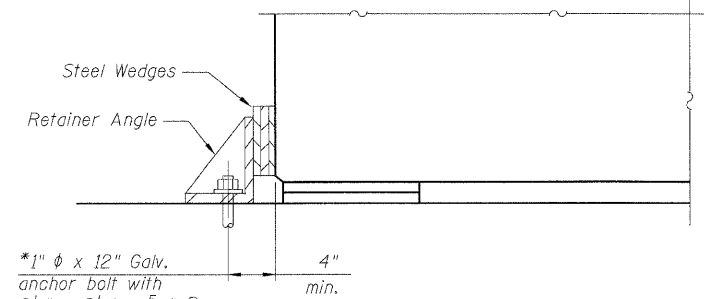
STAGE I CONSTRUCTION & STAGE II REMOVAL

(Looking West)

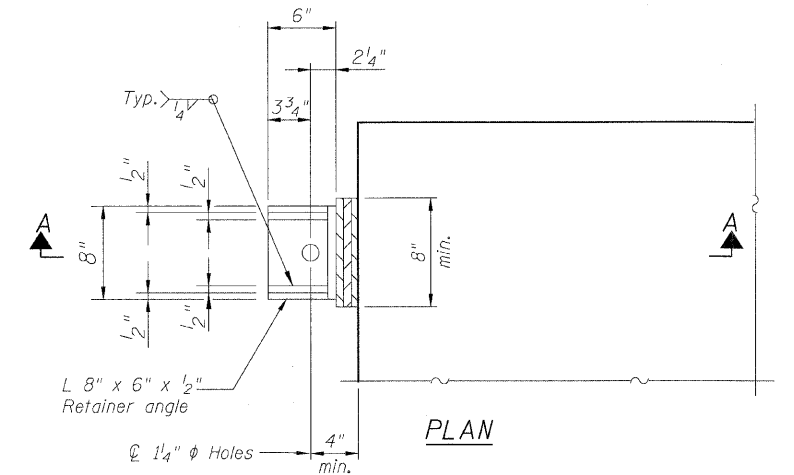


FINAL

(Looking West)



SECTION A-A

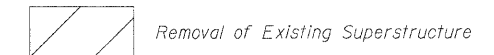


PLAN

TEMPORARY RETAINER ANGLE

* Retainer angle to be placed adjacent to center beam at West Abutment right after Stage I center beam is removed. Retainer angle shall be removed right before installation of the new stage I beams. Repeat procedure for stage II. Cost of retainer and accessories are included with Precast Prestressed Concrete Deck Beams.

LEGEND:



NOTES:

1. See Sheet S-3 for Temporary Concrete Barrier Details.
2. The Contractor is ultimately responsible of means and methods to ensure the complete stability of the structural members during construction.
3. Existing Bearing removal to be paid for under "Asbestos Bearing Pad Removal".

STAGE CONSTRUCTION DETAILS

FAS 1317 (IL RTE 113)

OVER TERRY CREEK

STA. 784+13.00

S.N. 099-0172

| |
|------------|
| B. Sauter |
| E. Mroczek |
| R. Danley |
| B. Sauter |



Giorba Group, Inc.
CONSULTING ENGINEERS

5507 North Cumberland Avenue, Suite 402 Chicago, Illinois 60656
Tel. 773.775.4009 Fax 773.775.4014 Email chicago@giorba.com

| | | | | | |
|---------------------|------------|---------------------------|--------------------|--------------|-----------|
| SHEET NO. S-2 | F.A.I RTE. | SECTION | COUNTY | TOTAL SHEETS | SHEET NO. |
| | 1317 | 111 B-2 | WILL | 32 | 17 |
| S-13 SHEETS | | | CONTRACT NO. 60D86 | | |
| FED. ROAD DIST. NO. | | ILLINOIS FED. AID PROJECT | | | |

rdanley

7/8/2008