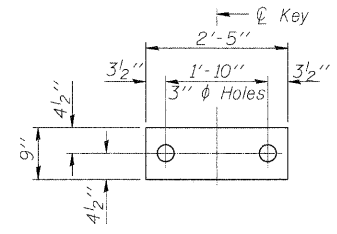
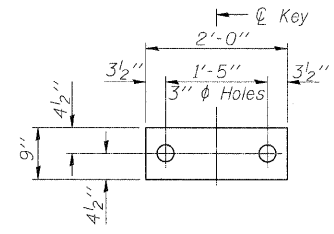


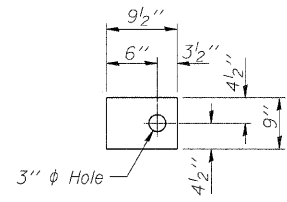
STATE OF ILLINOIS
DEPARTMENT OF TRANSPORTATION



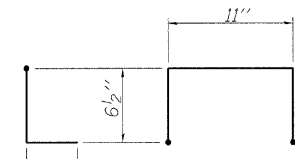
FABRIC BEARING PAD
(Interior)
(8 Required) **FIXED**



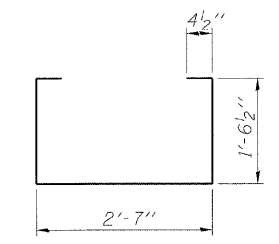
FABRIC BEARING PAD
(Interior)
(2 Required) **FIXED**



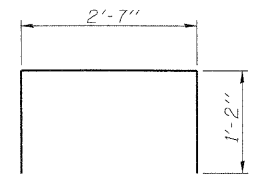
FABRIC BEARING PAD
(Exterior)
(2 Required) **FIXED**



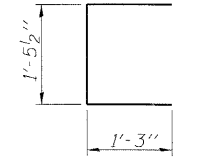
BAR D(E)



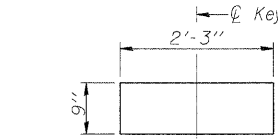
BAR S(E)



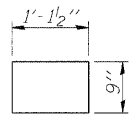
BAR S1(E)



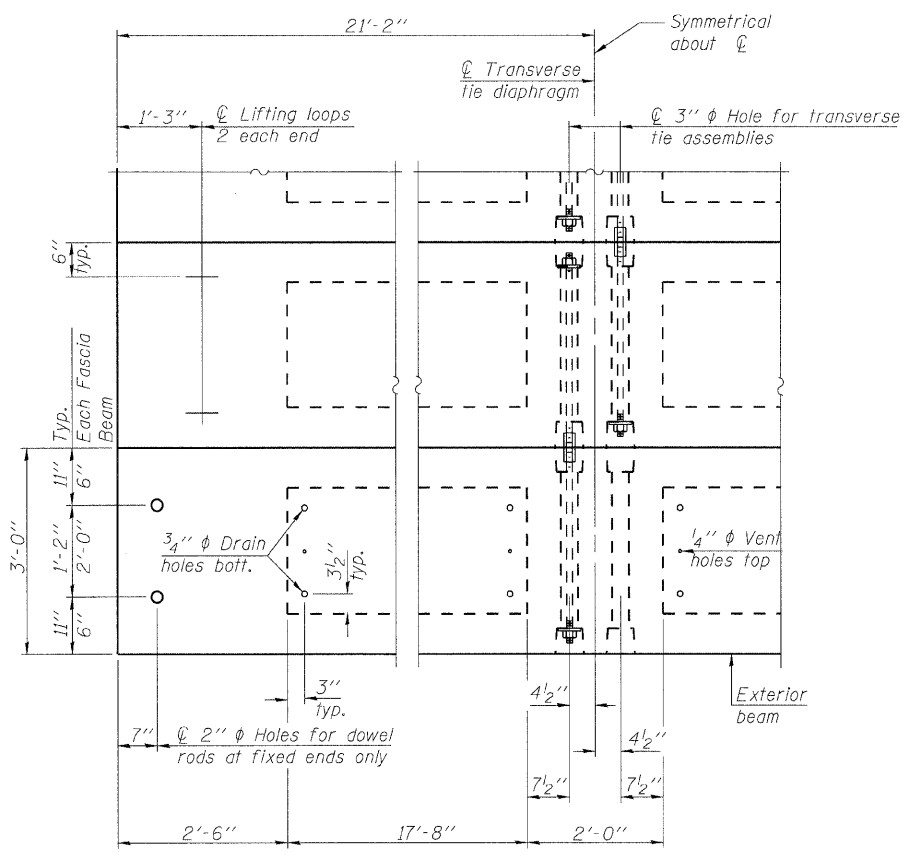
BAR U(E)



FABRIC BEARING PAD
(Interior)
(10 Required) **EXPANSION**



FABRIC BEARING PAD
(Exterior)
(2 Required) **EXPANSION**



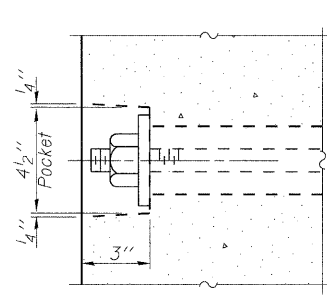
PLAN VIEW

Note: Connect beams in pairs with the transverse tie configuration shown.

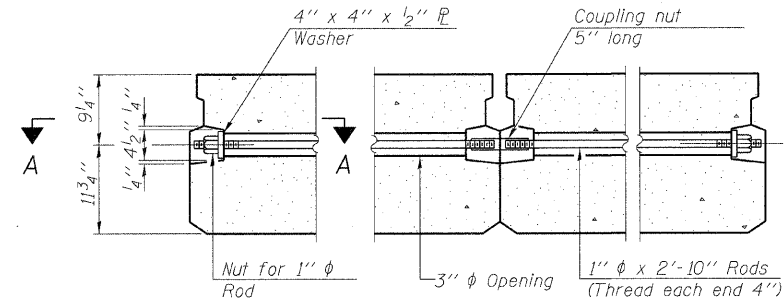
B. Sauter
E. Mroczek
R. Danley
B. Sauter

CG **Giorba Group, Inc.**
CONSULTING ENGINEERS
5507 North Cumberland Avenue, Suite 402 Chicago, Illinois 60656
Tel. 773.775.4009 Fax 773.775.4014 Email chicago@cgiorba.com

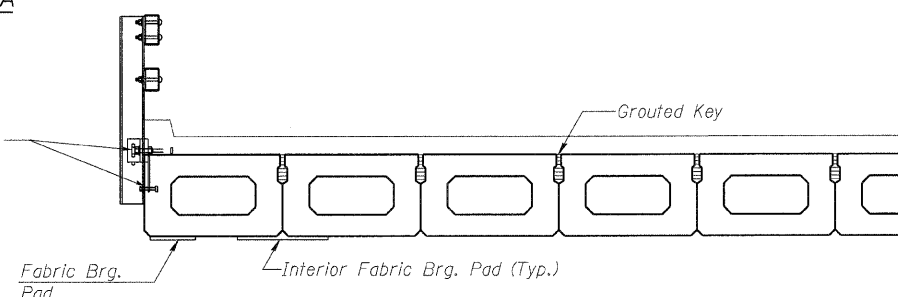
PD-2136-OD 5-16-08



SECTION A-A



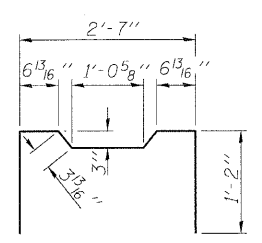
TYPICAL TRANSVERSE TIE ASSEMBLY



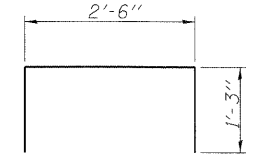
PARTIAL CROSS SECTION

NOTES

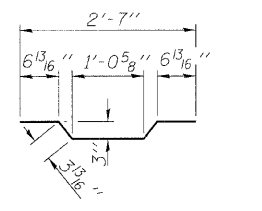
- 1. Prestressing steel shall be uncoated high strength, low relaxation 7-wire strand, Grade 270. The nominal diameter shall be 1/2" and the nominal cross-sectional area shall be 0.153 sq. in. The 1" rods in the transverse tie assembly shall be tightened to a snug fit and the threads set. Pockets on exterior faces of bridge shall be filled with grout after transverse tie assembly is in place.
- 2. Reinforcement bars shall conform to ASTM A 706, Grade 60. (See Special Provisions).
- 3. Two 1/8" fabric adjusting shims of the dimensions of the exterior bearing pad shall be provided for each bearing pad location.
- 4. A minimum 2 1/2" diameter lifting pin shall be used to engage the lifting loops during handling.
- 5. Corrosion Inhibitor, per Article 1020.05(b)(12) and 1021.06 of the Standard Specifications, shall be used in the concrete for precast prestressed concrete deck beams.
- 6. Compressive strength of prestressed concrete, f'c, shall be 6000 psi.
- 7. Compressive strength of prestressed concrete at release, f'ci, shall be 5000 psi.



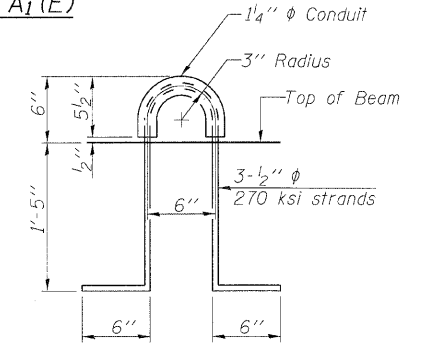
BAR S2(E)



BAR U1(E)



BAR A1(E)



LIFTING LOOP DETAIL

BILL OF MATERIAL

Precast Prestressed Conc. Deck Bms. (21" depth)	Sq. Ft.	1,397
-------------------------------------------------	---------	-------

21" X 36" PPC DECK BEAM DETAILS
FAS 1317 (IL RTE 113)
OVER TERRY CREEK
STA. 784+13.00
S.N. 099-0172

SHEET NO. S-5	F.A.I RTE.	SECTION	COUNTY	TOTAL SHEETS	SHEET NO.
	1317	111 B-2	WILL	32	20
S-13 SHEETS	CONTRACT NO.			60D86	
	FED. ROAD DIST. NO.	ILLINOIS FED. AID PROJECT			