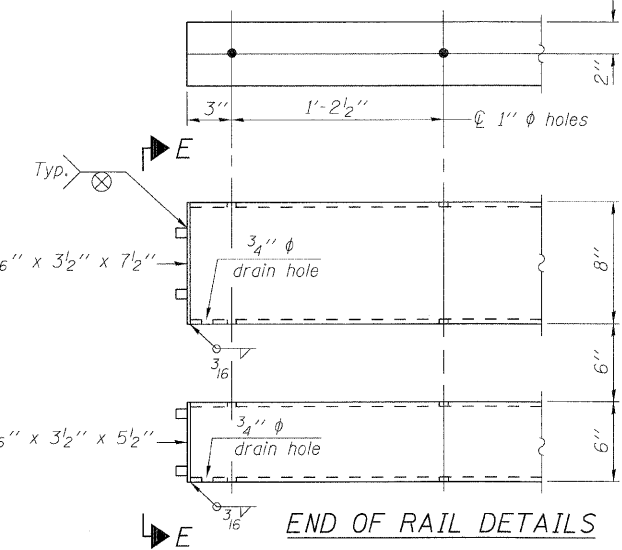
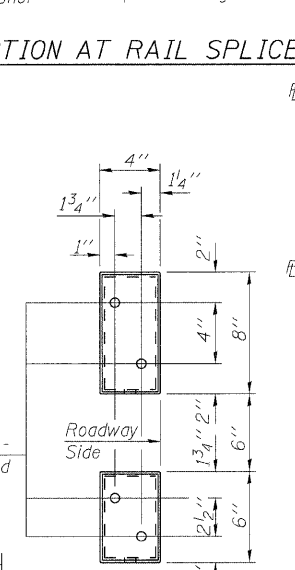
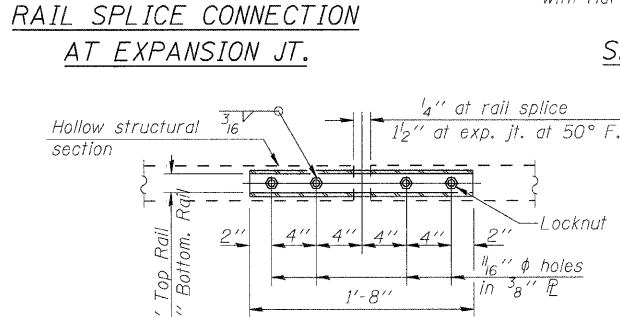
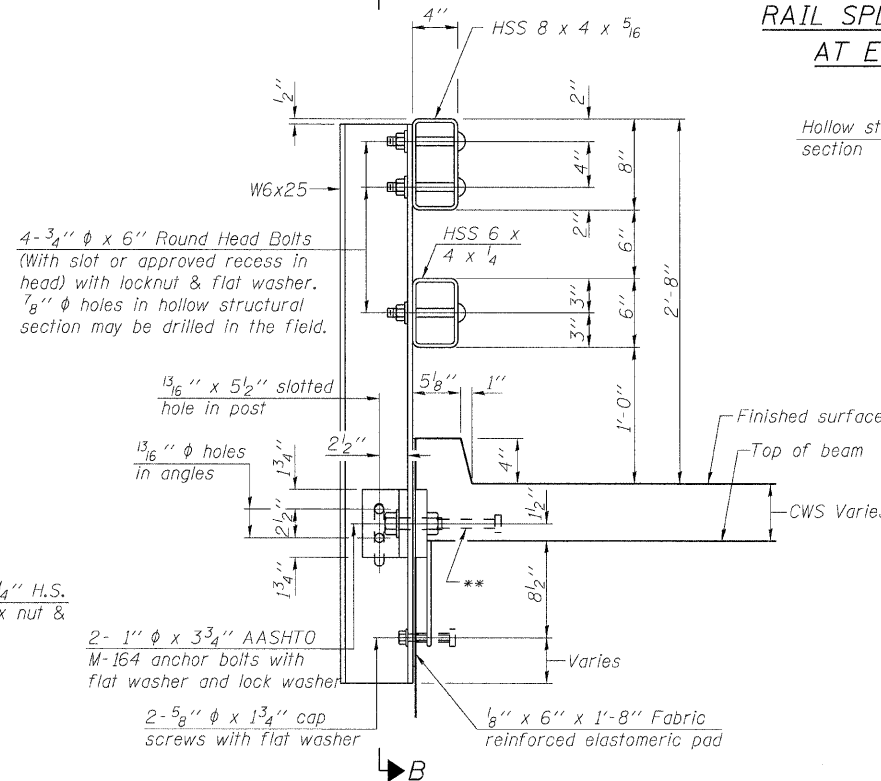
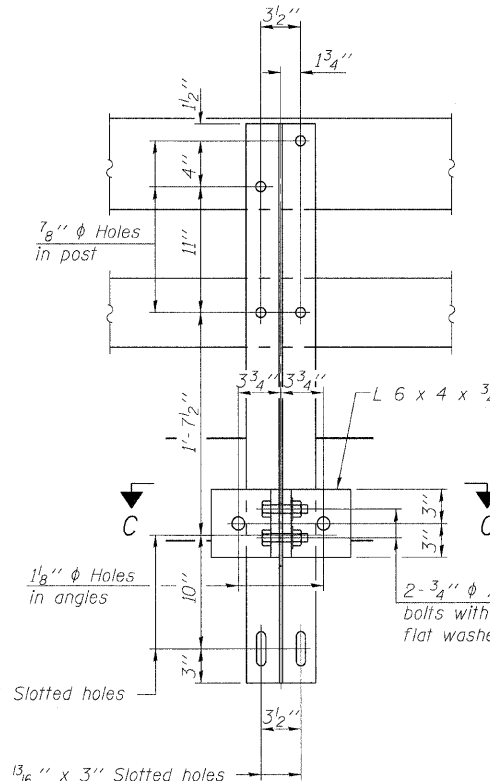
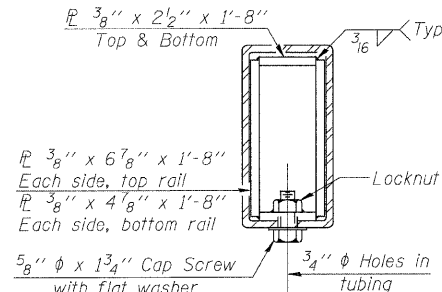
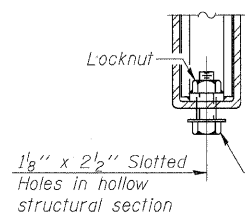
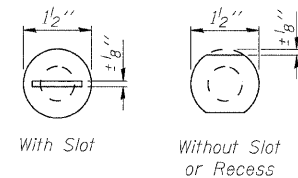
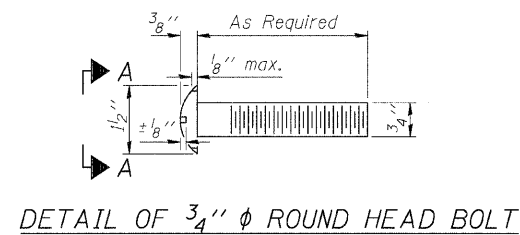


STATE OF ILLINOIS
DEPARTMENT OF TRANSPORTATION



Notes:
All field drilled holes shall be coated with an approved zinc rich paint before erection.
For multi-span bridges, sufficient 1/4" x 6" x 1'-2" galvanized steel shims shall be provided to align rail between adjacent spans. Cost included with Steel Railing, Type SM.
All steel railing elements shall be galvanized according to Article 509.05 of the Standard Specifications.
**The studs of the anchor devices shall be placed below the top reinforcement bars and the outermost longitudinal reinforcement bar shall be placed directly above the studs of the rail post anchor device.

BILL OF MATERIAL

Item	Unit	Quantity
Steel Railing, Type SM	Foot	92

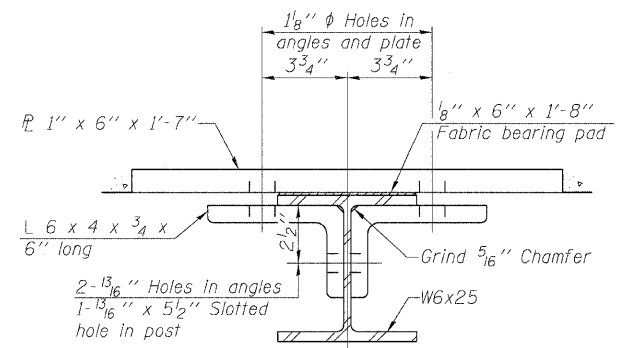
SECTION B-B

SECTION AT RAIL POST

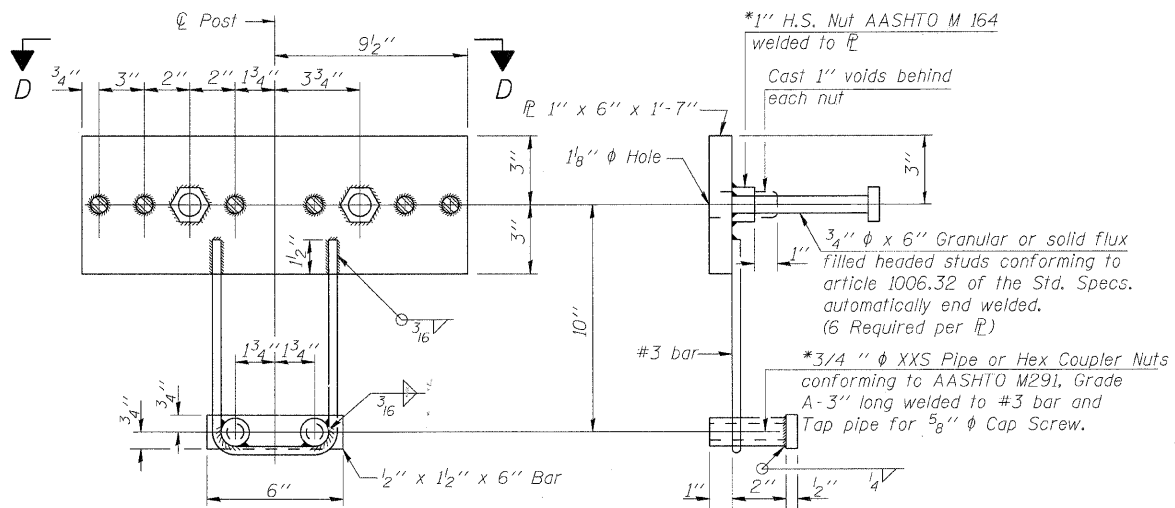
PLAN-BOTTOM SPLICE R TYPICAL

VIEW E-E

VIEW D-D



SECTION C-C



ANCHOR DEVICE

STEEL RAILING, TYPE SM
WITH CONCRETE
WEARING SURFACE AND CURB
FAS 1317 (IL RTE 113)
OVER TERRY CREEK
STA. 784+13.00
S.N. 099-0172

*Threaded areas shall be plugged or blocked off during casting of beam. Galvanized after fabrication.

SHEET NO. S-8	F.A.I. RTE.	SECTION	COUNTY	TOTAL SHEETS	SHEET NO.
	1317	111 B-2	WILL	32	23
S-13 SHEETS			CONTRACT NO. 60D86		
FED. ROAD DIST. NO.		ILLINOIS FED. AID PROJECT			

B. Sauter
E. Mroczek
R. Danley
B. Sauter

CG Ciorba Group, Inc.
CONSULTING ENGINEERS
5507 North Cumberland Avenue, Suite 402 Chicago, Illinois 60656
Tel. 773.775.4009 Fax 773.775.4014 Email chicagocg@ciorba.com

R-34CWSC 5-16-08 (6'-3" Maximum Post Spacing) (5" minimum to 7 1/8" maximum CWS thickness)

7/8/2008 rdaminrj n:\p\3329\3329_22\design\structural\cadd\veh\3329_22_08_Railing_Details.sht