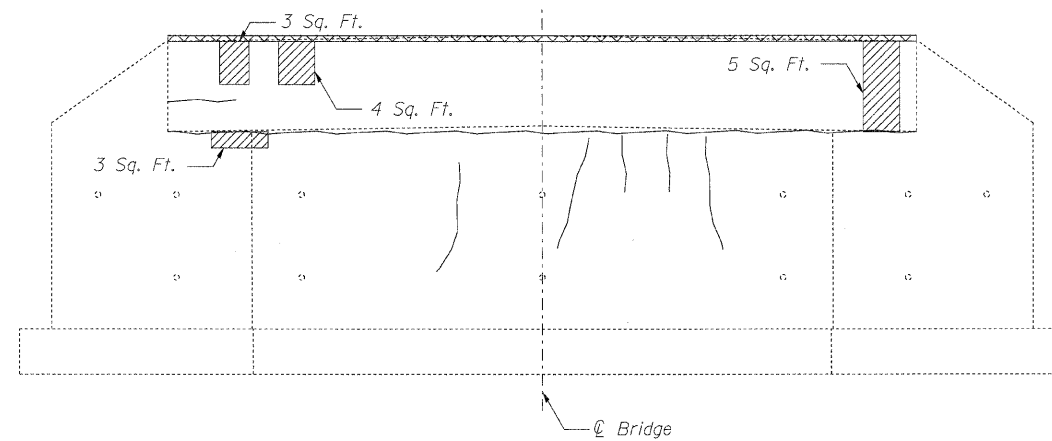
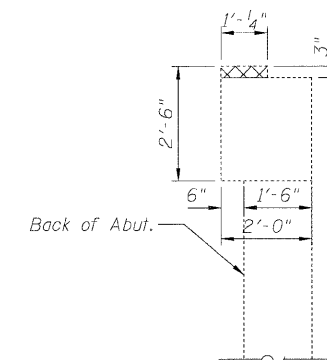


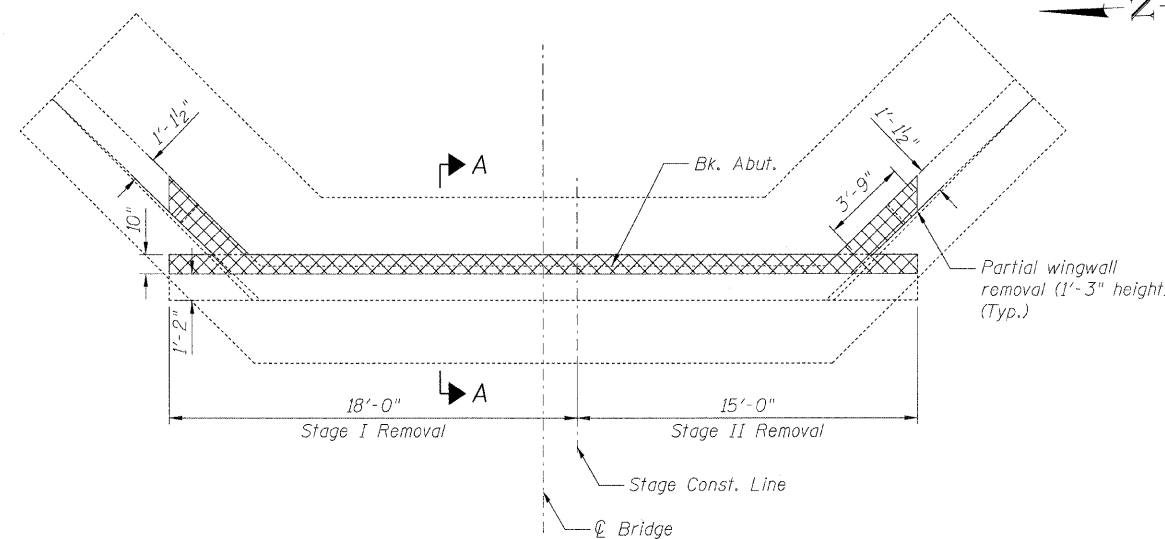
STATE OF ILLINOIS  
DEPARTMENT OF TRANSPORTATION



**ELEVATION**  
Looking East



**SECTION A-A**



**PLAN**

**BILL OF MATERIAL**

Item	Unit	Quantity
Structural Repair of Concrete (Depth Equal to or Less than 5")	Sq. Ft.	15
Concrete Removal	Cu. Yd.	0.7

**NOTE:**

Repairs of the existing abutments shall include but not be limited to the areas shown. The actual areas to be determined by the engineer at the time of construction.

**EAST ABUTMENT  
REPAIRS  
FAS 1317 (IL RTE 113)  
OVER TERRY CREEK  
STA. 784+13.00  
S.N. 099-0172**

**LEGEND**

- Structural Repair of Concrete ( $\leq 5"$ )
- Hairline Crack
- Concrete Removal

B. Sauter
E. Mroczek
R. Danley
B. Sauter

**CG** **Giorba Group, Inc.**  
CONSULTING ENGINEERS  
5507 North Cumberland Avenue, Suite 402 Chicago, Illinois 60656  
Tel. 773.775.4009 Fax 773.775.4014 Email [chicago@giorba.com](mailto:chicago@giorba.com)

SHEET NO. S-9	F.A.I. RTE.	SECTION	COUNTY	TOTAL SHEETS	SHEET NO.
	1317	111 B-2	WILL	32	24
S-13 SHEETS			CONTRACT NO. 60D86		
FED. ROAD DIST. NO.		ILLINOIS FED. AID PROJECT			

rdanley

7/8/2008

na:\proj\3329\3329\_22\design\structural\road\veh\3329\_22\_09\_East\_Abutment.sht