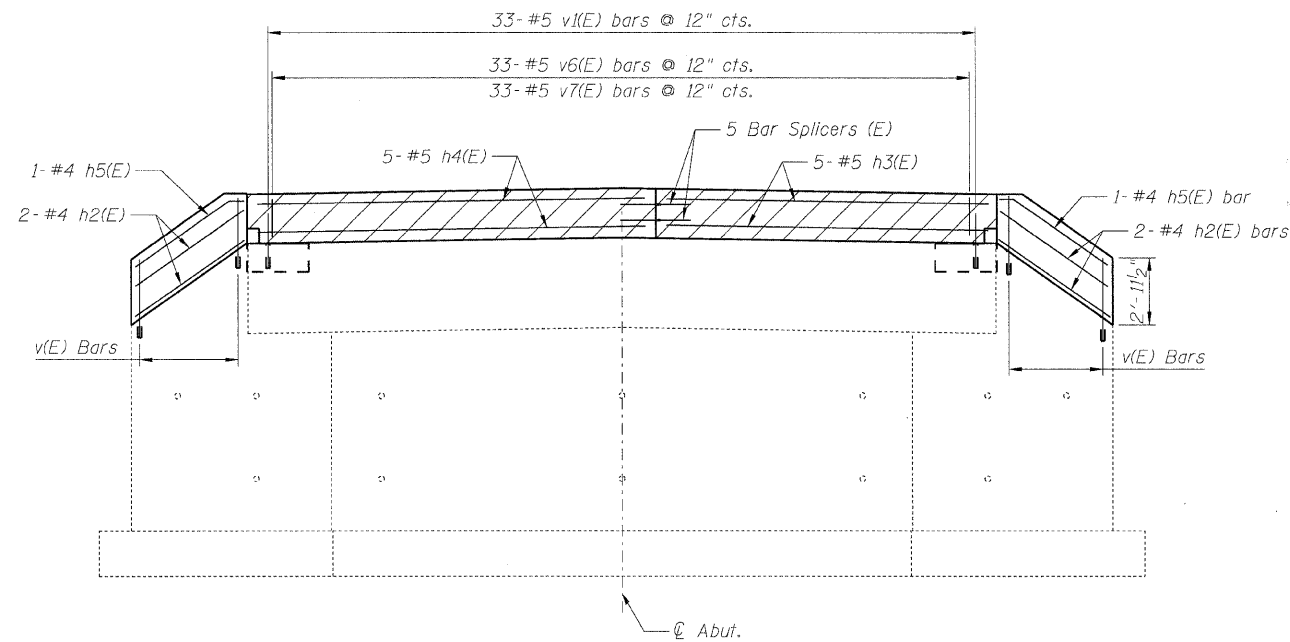
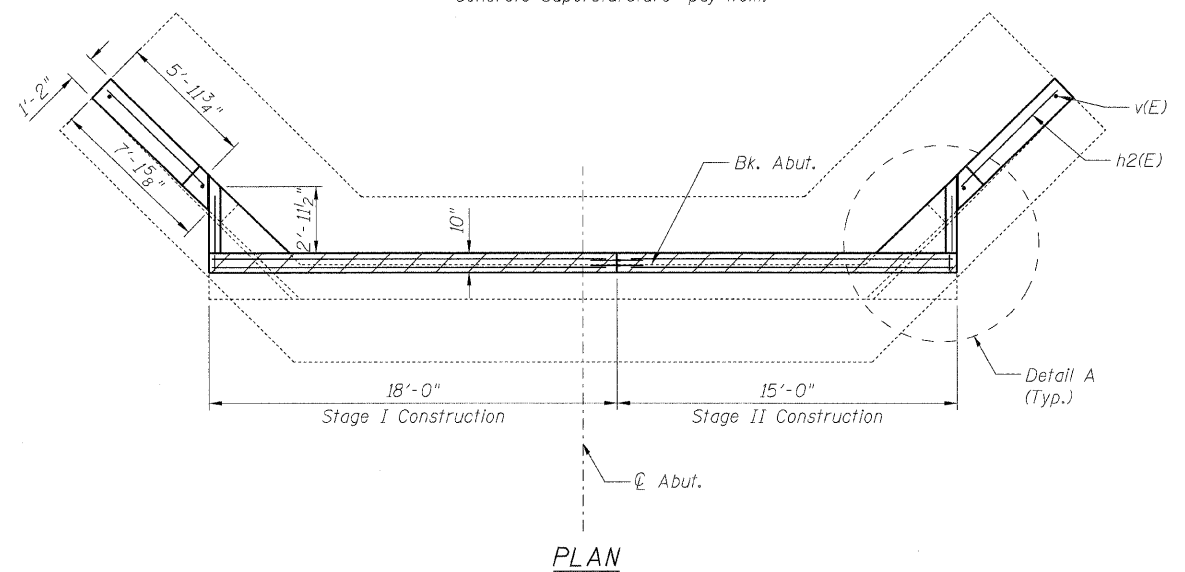


STATE OF ILLINOIS
DEPARTMENT OF TRANSPORTATION

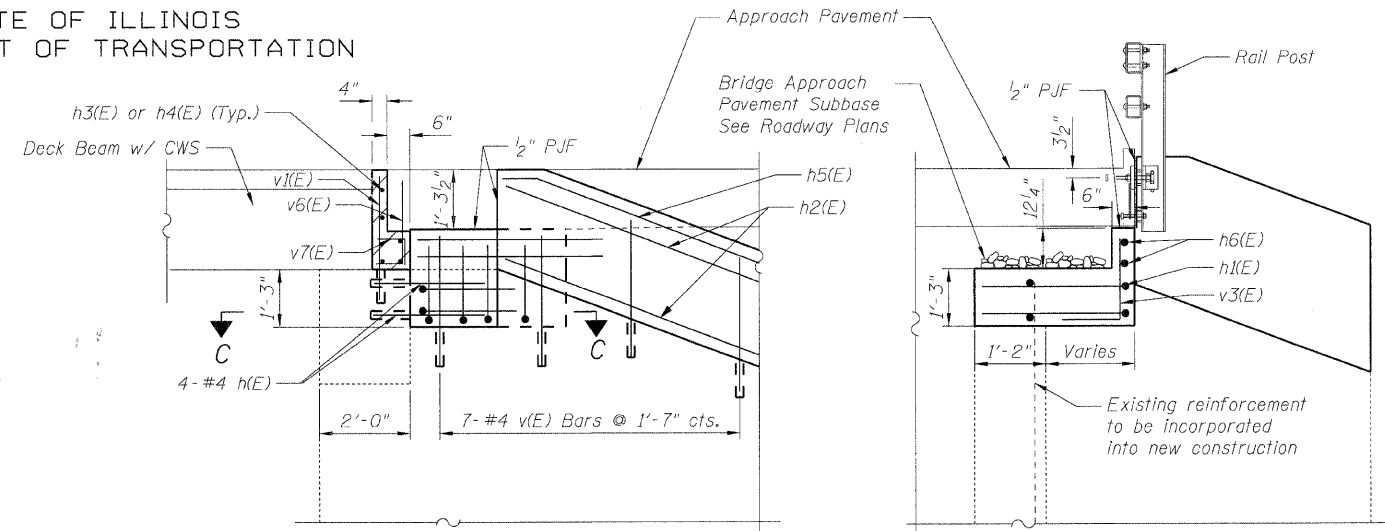


ELEVATION
Looking East

Hatched areas to be poured after concrete wearing surface is in place. The cost of Concrete is included with "Concrete Superstructure" pay item.

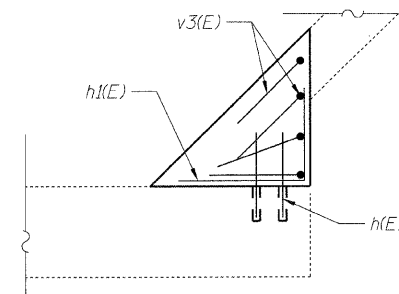


PLAN

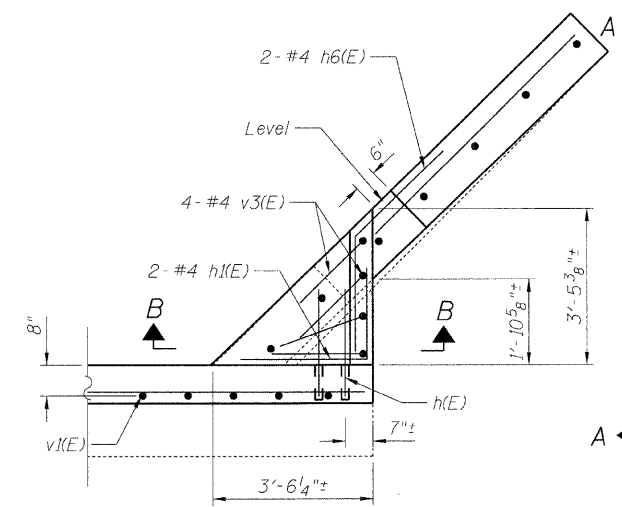
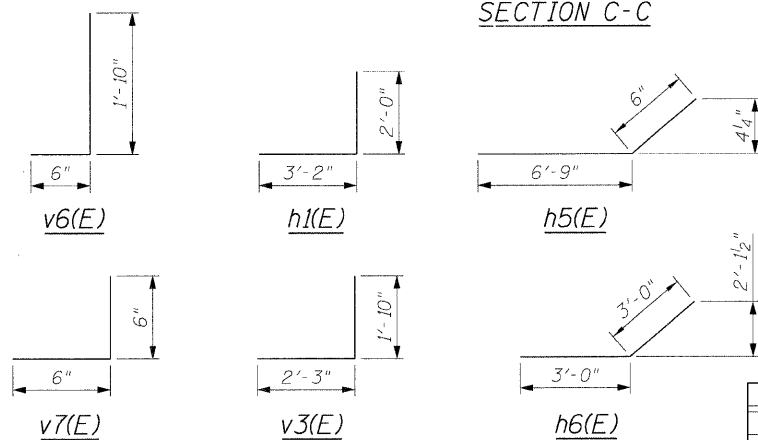


VIEW A-A

SECTION B-B



SECTION C-C



DETAIL A

BILL OF MATERIAL

Bar	No.	Size	Length	Shape
h(E)	8	#4	1'-9"	—
h1(E)	4	#4	5'-2"	┘
h2(E)	4	#4	7'-0"	—
h3(E)	5	#5	13'-8"	—
h4(E)	5	#5	18'-8"	—
h5(E)	2	#4	7'-3"	—
h6(E)	4	#4	6'-0"	—
v(E)	14	#4	3'-8"	—
v1(E)	33	#5	2'-10"	—
v3(E)	8	#4	4'-1"	┘
v6(E)	33	#5	2'-4"	┘
v7(E)	33	#5	1'-0"	┘
Concrete Structures		Cu. Yd.	2.3	
Reinforcement Bars, Epoxy Coated		Pound	500	
Bar Splicers		Each	5	
Concrete Superstructures		Cu. Yd.	1.5	

NOTES:

1. Drill and grout h(E) and v(E) bars 9" min., and v1(E) bars 12" min. in accordance with Article 584 of the Standard Specifications. Cost included with Reinforcement Bars Epoxy Coated.
2. For rail anchorage details see sheet S-8.
3. For rail post location, see sheet S-6.
4. For typical section thru E. Abutment, see sheet S-6.

EAST ABUTMENT
FAS 1317 (IL RTE 113)
OVER TERRY CREEK
STA. 784+13.00
S.N. 099-0172

B. Sauter
E. Mroczek
R. Danley
B. Sauter



Ciorba Group, Inc.

CONSULTING ENGINEERS
5507 North Cumberland Avenue, Suite 402 Chicago, Illinois 60656
Tel. 773.775.4009 Fax 773.775.4014 Email chicago@ciorba.com

SHEET NO. S-10	F.A.I RTE.	SECTION	COUNTY	TOTAL SHEETS	SHEET NO.
	1317	111 B-2	WILL	32	25
S-13 SHEETS	CONTRACT NO. 60D86				
FED. ROAD DIST. NO.		ILLINOIS FED. AID PROJECT			

cdm101

7/8/2008

n:\puro\3329\3329_22\design\structural\east\13329_22_10_East_Abutment2.sht