

F.A. RTE.	SECTION	COUNTY	TOTAL SHEETS	SHEET NO.
VAR.	2008-0265C	VARIOUS	9	1

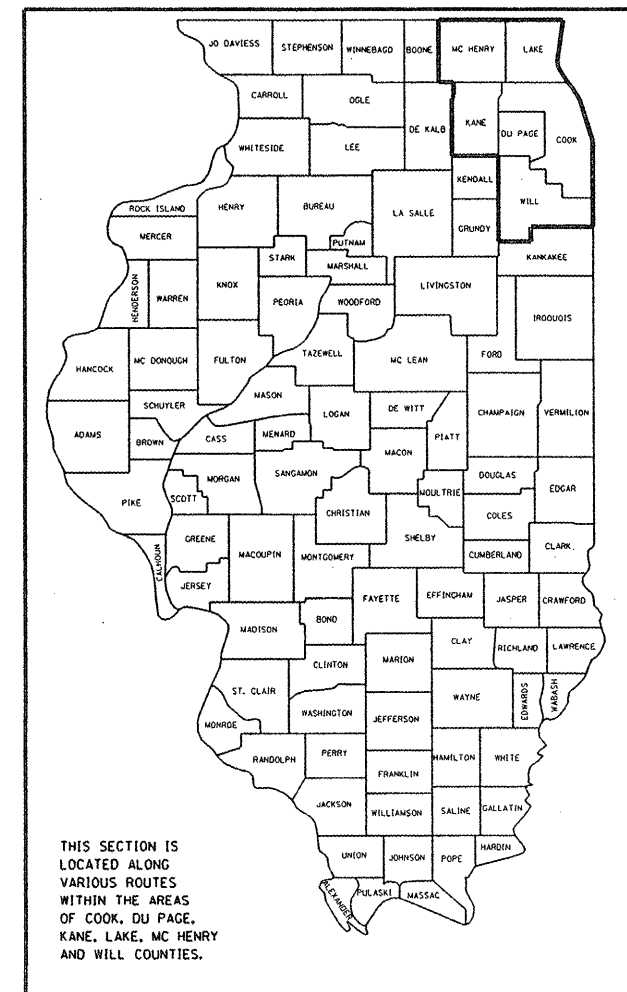
STATE OF ILLINOIS
DEPARTMENT OF TRANSPORTATION
DIVISION OF HIGHWAYS

**PROPOSED
HIGHWAY PLANS**

ROUTE: VARIOUS DISTRICT ONE
DISTRICT WIDE
SECTION: 2008-026 SG
SIGN INSTALLATION AND REPAIR
COUNTY: VARIOUS
C-91-488-08

FOR INDEX OF SHEETS, SEE SHEET NO. 2

D-91-488-08



**SEE LOCATION MAPS
SHEETS 4 THRU 8**

J.U.L.I.E.
JOINT UTILITY LOCATION INFORMATION FOR EXCAVATION
1-800-892-0123
OR 811

STATE OF ILLINOIS
DEPARTMENT OF TRANSPORTATION
DIVISION OF HIGHWAYS

SUBMITTED July 23, 2008
Diana M. O'Keefe
DEPUTY DIRECTOR OF HIGHWAYS, REGION ENGINEER

August 15, 2008
Eric E. Harn
Interim ENGINEER OF DESIGN AND ENVIRONMENT

August 15, 2008
Christine M. Reed
DIRECTOR OF HIGHWAYS, CHIEF ENGINEER

**PRINTED BY THE AUTHORITY
OF THE STATE OF ILLINOIS**

PROJECT ENGINEER: BOB BORO (847) 705-4178
PROJECT MANAGER: KEN ENG

CONTRACT NO. 60E57

INDEX OF SHEETS

<u>SHEET NO.</u>	<u>DESCRIPTION</u>
1	COVER SHEET
2	INDEX OF SHEETS, STANDARDS AND GENERAL NOTES
3	SUMMARY OF QUANTITIES
4-8	LOCATION MAP
9	TRAFFIC CONTROL DETAILS FOR SHOULDER CLOSURES AND PARTIAL RAMP CLOSURES

LIST OF STATE STANDARDS

<u>STANDARD NO.</u>	<u>DESCRIPTION</u>
701006-02	OFF-RD OPERATIONS, 2L, 2W, 15' to 24" FROM PAVEMENT EDGE
701011-01	OFF-RD MOVING OPERATIONS, 2L,2W, DAY ONLY
701101-01	OFF-RD OPERATIONS, MULTILANE, 15' to 24" from pavement edge
701106-01	OFF-RD OPERATIONS, MULTILANE, MORE THAN 15' AWAY
701206-01	LANE CLOSURE, 2L, 2W, NIGHT ONLY, FOR SPEEDS ≥ 45 MPH
701301-02	LANE CLOSURE, 2L, 2W, SHORT TIME OPERATIONS
701901	TRAFFIC CONTROL DEVICES
720001	SIGN PANEL MOUNTING DETAILS
720006-01	SIGN PANEL ERECTION DETAILS
720011	METAL POSTS FOR SIGNS, MARKERS AND DELINEATORS
720016-01	MAST ARM MOUNTED STREET NAME SIGNS
720021-01	SIGN PANELS EXTRUDED ALUMINUM TYPE
728001	TELESCOPING STEEL SIGN SUPPORT
729001	APPLICATIONS OF TYPES A AND B METAL POSTS (FOR SIGNS AND MARKERS)
731001	BASE FOR TELESCOPING STEEL SIGN SUPPORT

GENERAL NOTES

BEFORE STARTING ANY EXCAVATION, THE CONTRACTOR SHALL CALL "JULIE" AT 800-892-0123 OR 811 FOR FIELD LOCATIONS OF BURIED ELECTRIC, TELEPHONE AND GAS FACILITIES. (48 HOUR NOTIFICATION IS REQUIRED)

BEFORE STARTING ANY EXCAVATION, THE CONTRACTOR SHALL CALL "C.U.A.N." (CHICAGO UTILITY ALERT NETWORK) AT (312) 744-7000 FOR FIELD LOCATIONS OF BURIED ELECTRIC, TELEPHONE AND GAS UTILITIES. (48 HOUR NOTIFICATION IS REQUIRED).

ALL WORK SHALL BE DONE AS INDICATED IN THE WORK ORDER FORM.

NO MATERIAL SHALL BE LEFT ON OR NEAR THE ROADWAY DURING NON-WORKING HOURS.

REMOVAL OF DAMAGED MATERIALS SHALL INCLUDE DISMANTLING, LOADING, HAULING AND DISPOSAL. THE WORK SITE SHALL BE LEFT IN A SAFE AND ORDERLY CONDITION.

THE CONTRACTOR SHALL PICK UP THE SIGNS AND POSTS FROM ANY ONE OF THE FOUR (4) SIGN SHOPS THAT ISSUED THEM THE WORK ORDER.

THE SIGN SHOP LOCATIONS ARE AS FOLLOWS:

(ESS)
 IDOT ELGIN SIGN SHOP
 595 S. STATE STREET, DRIVE F, DOOR 22
 ELGIN, IL 60123
 (847) 741-5302

(NLSS)
 IDOT NEW LENOX SIGN SHOP
 I-80 & US RTE. 30, SE FRONTAGE RD
 NEW LENOX, IL 60451
 (815) 485-6475

(NSSS)
 IDOT NORTHSIDE SIGN SHOP
 7151 W. FOREST PRESERVE DRIVE
 CHICAGO, IL 60634
 (773) 685-8386

(SSSS)
 IDOT SOUTHSIDE SIGN SHOP
 15940 PULASKI RD.
 MARKHAM, IL 60426
 (708) 597-9800

FILE NAME = c:\projects\dl48808\sign_inst.dgn	USER NAME = shiransb	DESIGNED -	REVISED -	STATE OF ILLINOIS DEPARTMENT OF TRANSPORTATION	INDEX OF SHEETS, STATE STANDARDS & GENERAL NOTES	F.A.P. RTE.	SECTION	COUNTY	TOTAL SHEETS	SHEET NO.
PLOT SCALE = 1/32" = 1' / IN.	PLOT DATE = 7/30/2008	DRAWN -	REVISED -	CHECKED -	REVISED -	VAR.	2008-026 SG	VARIOUS	9	2
					SCALE:	SHEET NO. OF SHEETS STA. TO STA.		CONTRACT NO. 60B29		
						FED. ROAD DIST. NO. ILLINOIS FED. AID PROJECT				

**URBAN
100% STATE**

F.A. RTE.	SECTION	COUNTY	TOTAL SHEETS	SHEET NO.
VAR.	2008-026 SG	VARIOUS	9	3
FED. ROAD DIST. NO. 1		ILLINOIS	HIGHWAY PROJECT	

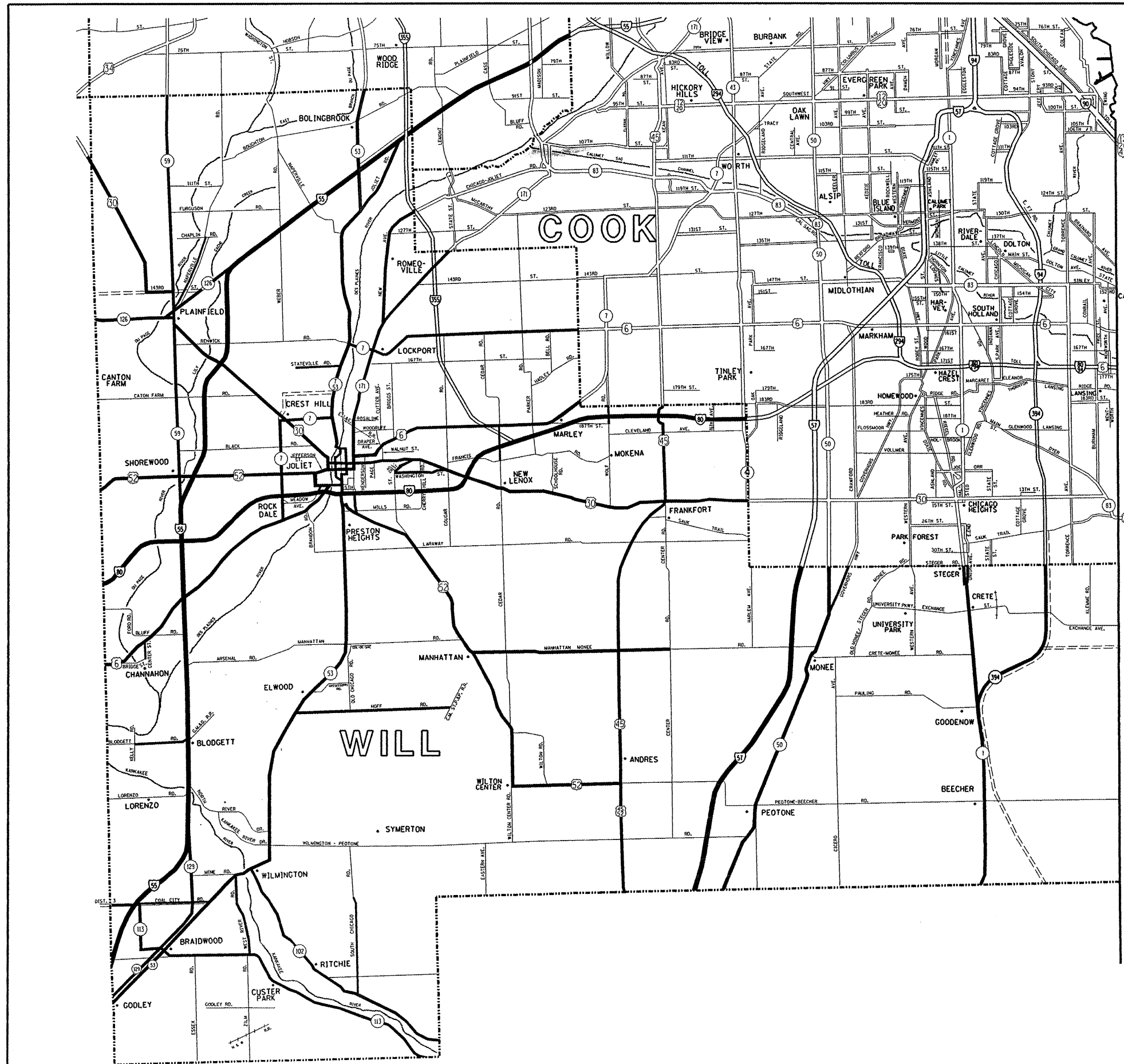
SUMMARY OF QUANTITIES		UNIT	CONSTRUCTION TYPE CODE	
CODE NO	ITEM		TOTAL QUANTITIES	Y002-1C
72300100	INSTALL EXISTING SIGN PANEL	SO FT	2500	2500
72400100	REMOVE SIGN PANEL ASSEMBLY - TYPE A	EACH	800	800
72400200	REMOVE SIGN PANEL ASSEMBLY - TYPE B	EACH	200	200
72400330	REMOVE SIGN PANEL - TYPE 3	SO FT	500	500
72400500	RELOCATE SIGN PANEL ASSEMBLY - TYPE A	EACH	600	600
72400600	RELOCATE SIGN PANEL ASSEMBLY - TYPE B	EACH	150	150
72400730	RELOCATE SIGN PANEL - TYPE 3	SO FT	500	500
72400900	REMOVE SIGN PANEL	EACH	750	750
X0877000	STRAIGHTEN EXISTING SIGN POST - TYPE A ASSEMBLY	EACH	800	800
X0877100	STRAIGHTEN EXISTING SIGN POST - TYPE B ASSEMBLY	EACH	200	200
X0877200	STRAIGHTEN EXISTING SIGN POST - TYPE 3 ASSEMBLY	EACH	100	100
X0960600	DRILL HOLE IN CONCRETE MEDIAN	EACH	100	100
X7230100	INSTALL SIGN PANEL - TYPE 1	SO FT	1000	1000
X7230200	INSTALL SIGN PANEL - TYPE 2	SO FT	2000	2000
X0326174	REPAIR EXISTING SIGN ASSEMBLY	EACH	200	200
X0326175	FURNISH WOOD SIGN SUPPORT	FOOT	100	100
X0326176	FURNISH TELESCOPING STEEL SIGN SUPPORT	FOOT	100	100
X0326177	INSTALL ROUND STEEL SIGN SUPPORT	FOOT	2000	2000
X0326172	REMOVE EXISTING SIGN SUPPORT	EACH	250	250
X0326178	INSTALL TELESCOPING STEEL SIGN SUPPORT	FOOT	5000	5000
X0326179	INSTALL WOOD SIGN SUPPORT	FOOT	2500	2500
X0326180	INSTALL SIGN PANEL-TYPE 3	SO FT	800	800
X0326173	RELOCATE EXISTING SIGN SUPPORT	EACH	300	300
X0326181	INSTALL STREET SIGN	SO FT	1000	1000

REVISIONS	
NAME	DATE

ILLINOIS DEPARTMENT OF TRANSPORTATION
SUMMARY OF QUANTITIES

PLOT DATE: 7/30/2008

7/30/2008 10:28:58 AM C:\p08\1008\1008.dwg



NEW LENOX SIGN SHOP JURISDICTION

- DISTRICT NO. 1
- ==== STATE HIGHWAYS & EXPRESSWAYS WITHIN STATE JURISDICTION (EXCEPT TOLLWAYS)
 - FUTURE HIGHWAYS
 - VARIOUS AGENCIES HIGHWAYS

* VARIOUS

FILE NAME =
e:\projects\dl48808\sign_inst.dgn

USER NAME = sharonsb
PLOT SCALE = 1:31,218'' / IN.
PLOT DATE = 7/30/2008

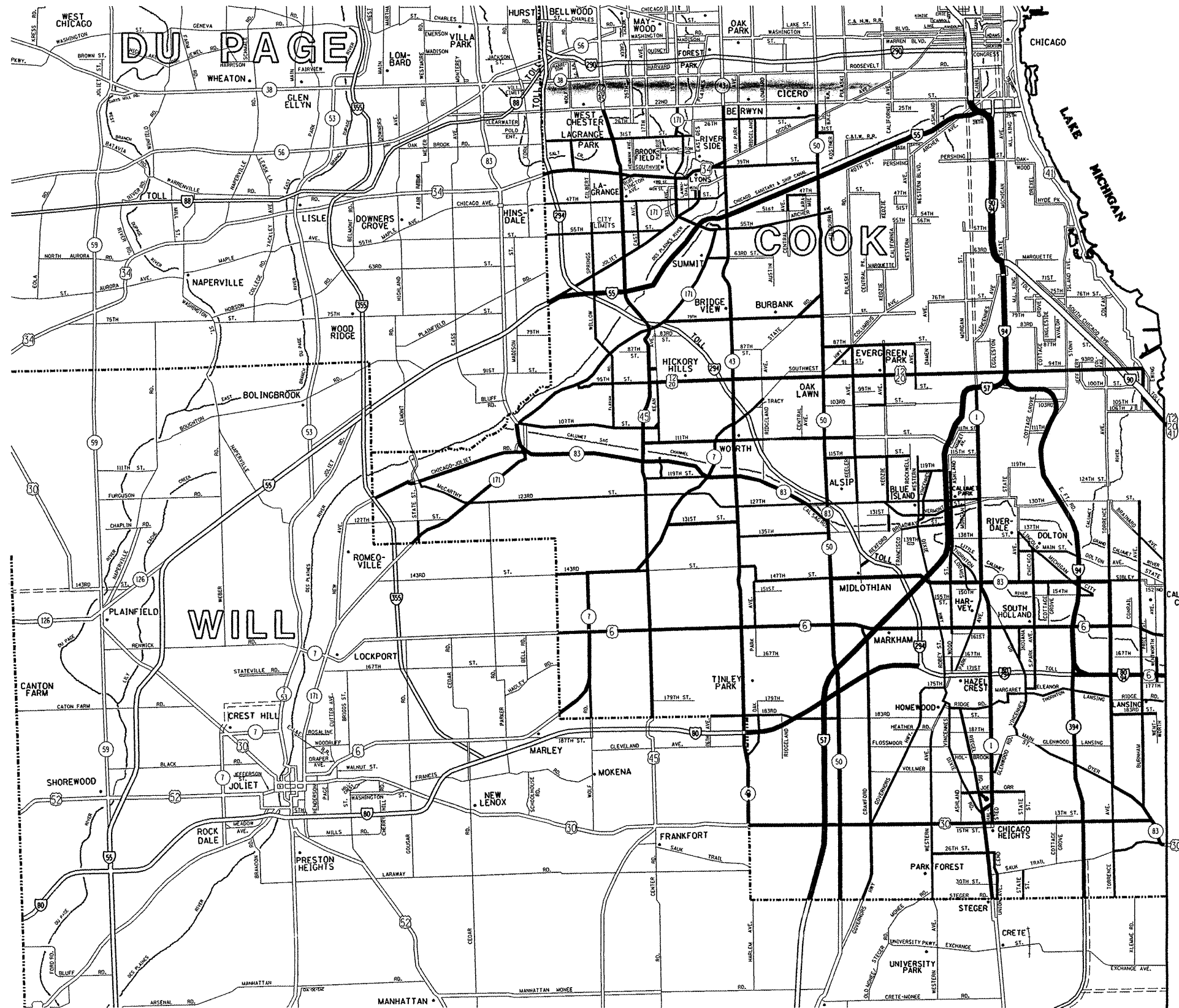
DESIGNED -	REVISED -
DRAWN -	REVISED -
CHECKED -	REVISED -
DATE -	REVISED -

**STATE OF ILLINOIS
DEPARTMENT OF TRANSPORTATION**

**NEW LENOX SIGN SHOP JURISDICTION
SIGN INSTALLATION AND REPAIR**

SCALE: SHEET NO. OF SHEETS STA. TO STA.

F.A. RTE.	SECTION	COUNTY	TOTAL SHEETS	SHEET NO.
VAR.	2008-026 SG	*	9	4
FED. ROAD DIST. NO. ILLINOIS FED. AID PROJECT			CONTRACT NO. 60E57	



— SOUTH SIDE SIGN SHOP JURISDICTION

- DISTRICT NO. 1
- STATE HIGHWAYS & EXPRESSWAYS WITHIN STATE JURISDICTION (EXCEPT TOLLWAYS)
 - - - FUTURE HIGHWAYS
 - VARIOUS AGENCIES HIGHWAYS

* VARIOUS

FILE NAME = c:\projects\4148808\sign-inst.dgn

USER NAME = shironsb
 PLOT SCALE = 103.1218' / IN.
 PLOT DATE = 7/30/2008

DESIGNED -
 DRAWN -
 CHECKED -
 DATE -

REVISED -
 REVISED -
 REVISED -
 REVISED -

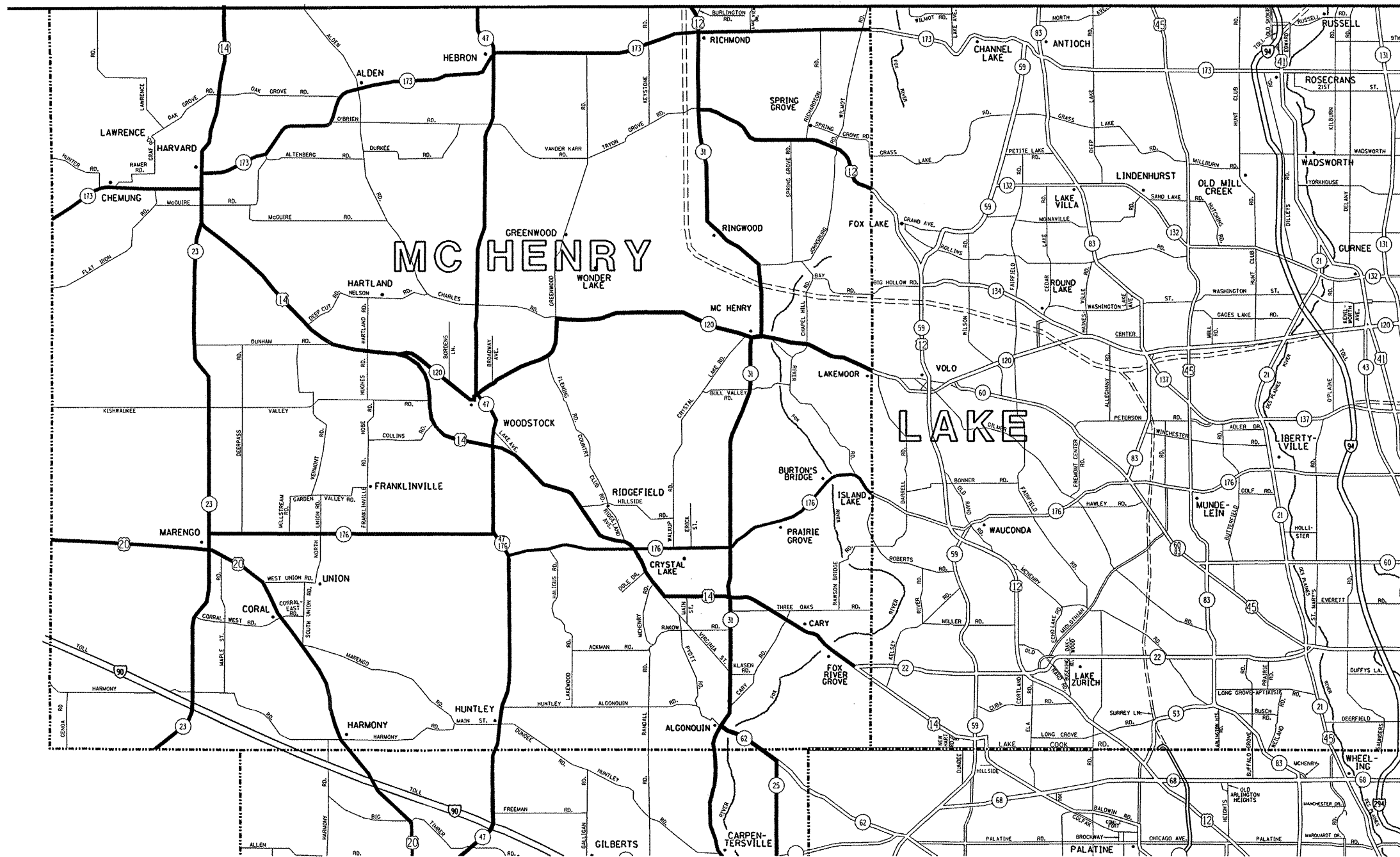
**STATE OF ILLINOIS
 DEPARTMENT OF TRANSPORTATION**

**SOUTH SIDE SIGN SHOP JURISDICTION
 SIGN INSTALLATION AND REPAIR**

SCALE: SHEET NO. OF SHEETS STA. TO STA.

F.A. RTE.	SECTION	COUNTY	TOTAL SHEETS	SHEET NO.
VAR.	2008-026 SG	*	9	5
FED. ROAD DIST. NO.			ILLINOIS FED. AID PROJECT	
			CONTRACT NO. 60E57	

WISCONSIN



ELGIN SIGN SHOP JURISDICTION

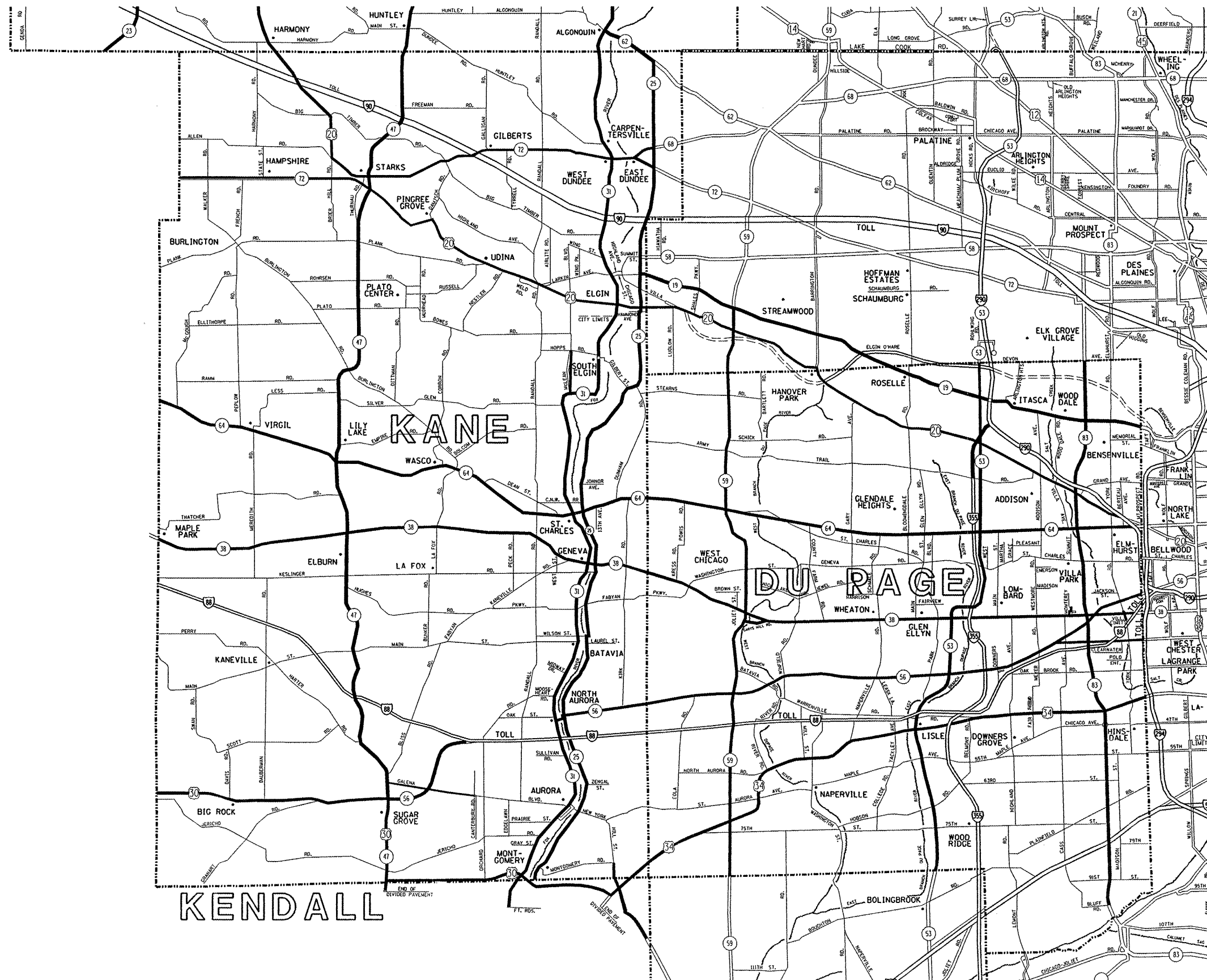
- DISTRICT NO. 1**
- ==== STATE HIGHWAYS & EXPRESSWAYS WITHIN STATE JURISDICTION (EXCEPT TOLLWAYS)
 - FUTURE HIGHWAYS
 - VARIOUS AGENCIES HIGHWAYS

SEE NEXT SHEET FOR ELGIN SIGN SHOP CONTINUATION

FILE NAME = c:\projects\4148808\sign_inst.dgn	USER NAME = shurenish	DESIGNED -	REVISED -	STATE OF ILLINOIS DEPARTMENT OF TRANSPORTATION	ELGIN SIGN SHOP JURISDICTION SHEET 1 OF 2 SIGN INSTALLATION AND REPAIR		F.A. RTE.	SECTION	COUNTY	TOTAL SHEETS	SHEET NO.	
		DRAWN -	REVISED -		SCALE:	SHEET NO.	OF SHEETS	STA.	TO STA.	*	9	6
		CHECKED -	REVISED -							FED. ROAD DIST. NO.	ILLINOIS FED. AID PROJECT	
		DATE -	REVISED -									

* VARIOUS

SEE PREVIOUS SHEET FOR ELGIN SIGN SHOP CONTINUATION



ELGIN SIGN SHOP JURISDICTION

- DISTRICT NO. 1**
- STATE HIGHWAYS & EXPRESSWAYS WITHIN STATE JURISDICTION (EXCEPT TOLLWAYS)
 - FUTURE HIGHWAYS
 - VARIOUS AGENCIES HIGHWAYS

* VARIOUS

FILE NAME =
c:\projects\dl148889\sign_inst.dgn

USER NAME = shirontab
PLOT SCALE = 1/32" = 1" / IN.
PLOT DATE = 7/30/2008

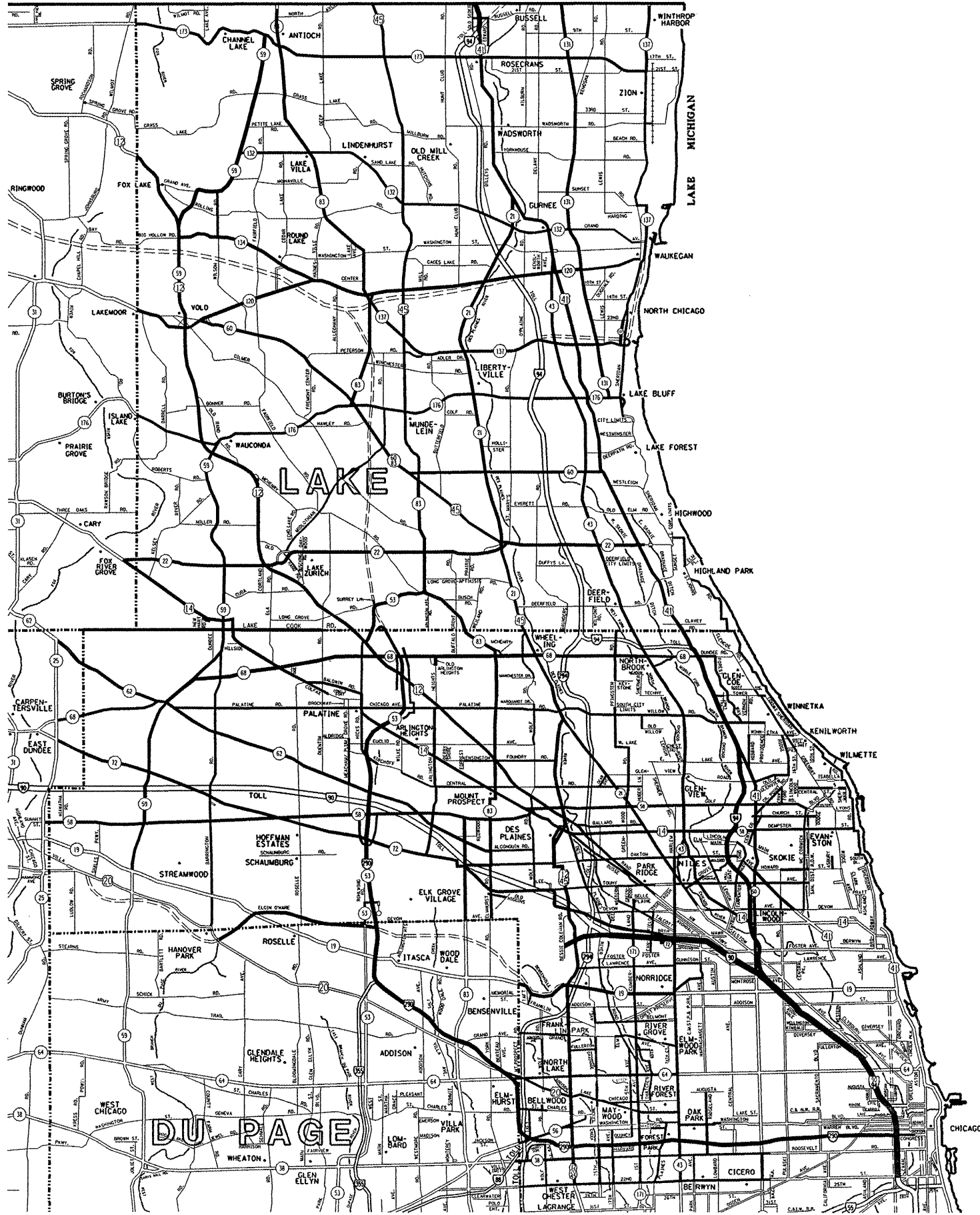
DESIGNED -	REVISED -
DRAWN -	REVISED -
CHECKED -	REVISED -
DATE -	REVISED -

STATE OF ILLINOIS
DEPARTMENT OF TRANSPORTATION

ELGIN SIGN SHOP JURISDICTION SHEET 2 OF 2
SIGN INSTALLATION AND REPAIR

SCALE: SHEET NO. OF SHEETS STA. TO STA.

F.A. RTE.	SECTION	COUNTY	TOTAL SHEETS	SHEET NO.
VAR.	2008-026 SG	*	9	7
FED. ROAD DIST. NO.			ILLINOIS FED. AID PROJECT	
			CONTRACT NO. 60E57	



NORTHSIDE SIGN SHOP JURISDICTION

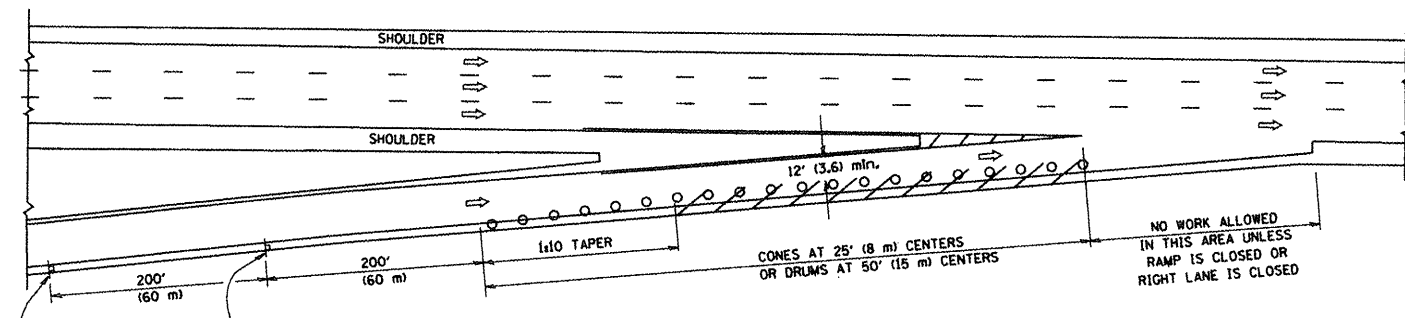
DISTRICT NO. 1
 STATE HIGHWAYS & EXPRESSWAYS WITHIN STATE JURISDICTION (EXCEPT TOLLWAYS)
 FUTURE HIGHWAYS
 VARIOUS AGENCIES HIGHWAYS

* VARIOUS

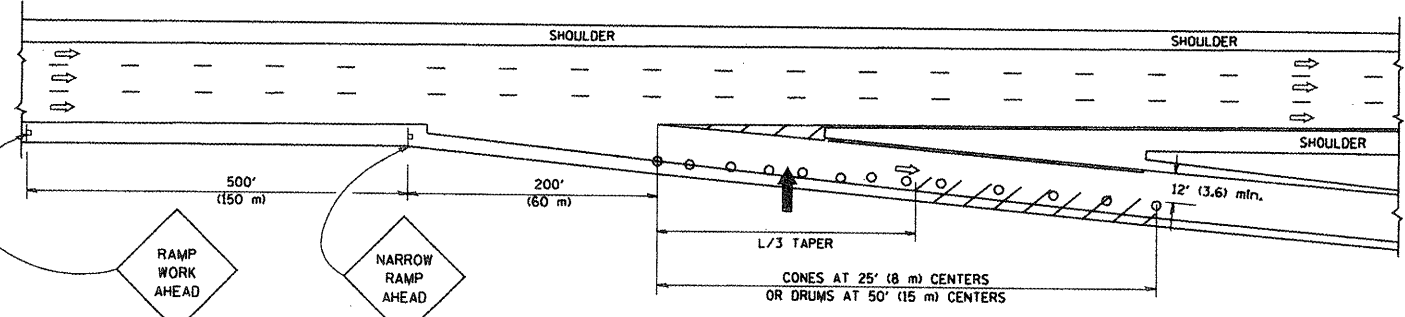
FILE NAME = c:\projects\dl148008\sign_inst.dgn	USER NAME = shiran1sb	DESIGNED -	REVISED -	STATE OF ILLINOIS DEPARTMENT OF TRANSPORTATION	NORTHSIDE SIGN SHOP JURISDICTION SIGN INSTALLATION AND REPAIR			F.A. RTE.	SECTION	COUNTY	TOTAL SHEETS	SHEET NO.	
		DRAWN -	REVISED -		SCALE:	SHEET NO. OF SHEETS	STA. TO STA.	VAR.	2008-026 SG	*	9	8	
		CHECKED -	REVISED -										
		DATE -	REVISED -										
		PLOT DATE = 7/30/2008						CONTRACT NO. 60E57					
FED. ROAD DIST. NO. ILLINOIS FED. AID PROJECT													

PARTIAL RAMP CLOSURE DETAILS

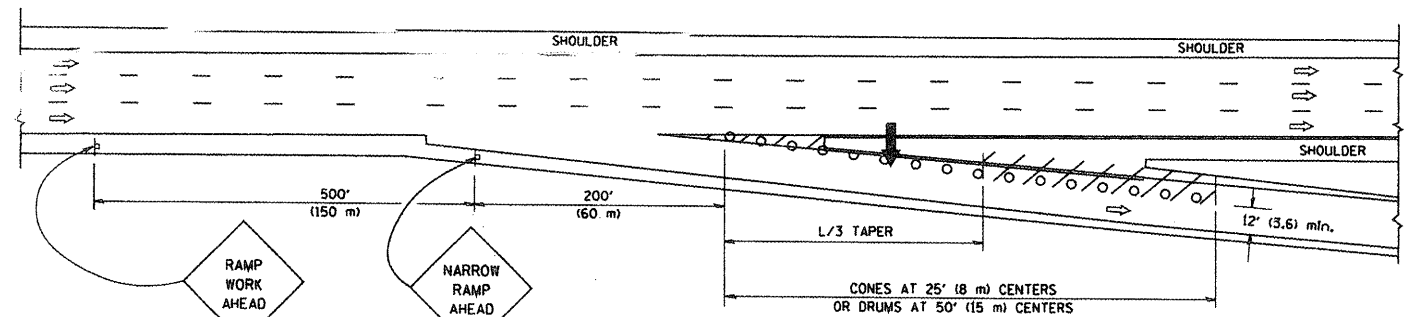
SHOULDER CLOSURE DETAILS



TYPICAL ENTRANCE RAMP



TYPICAL EXIT RAMP



TYPICAL EXIT RAMP

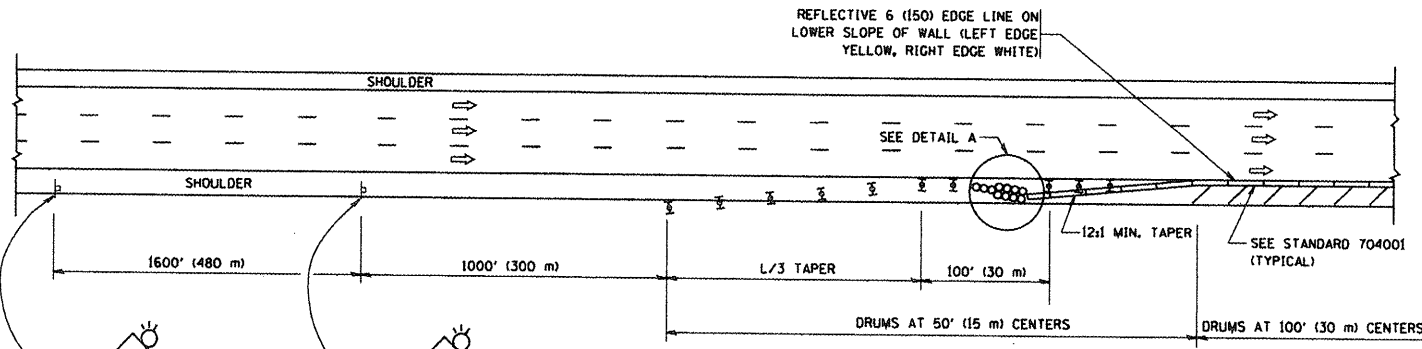
SYMBOLS

- ARROWBOARD
- WORK AREA
- SIGN ON PORTABLE OR PERMANENT SUPPORT
- FLAGGER WITH CONTROL SIGN
- TYPE II BARRICADE, DRUM OR VERTICAL BARRICADE WITH STEADY BURN MONO-DIRECTIONAL LIGHT
- CONE, DRUM OR BARRICADE

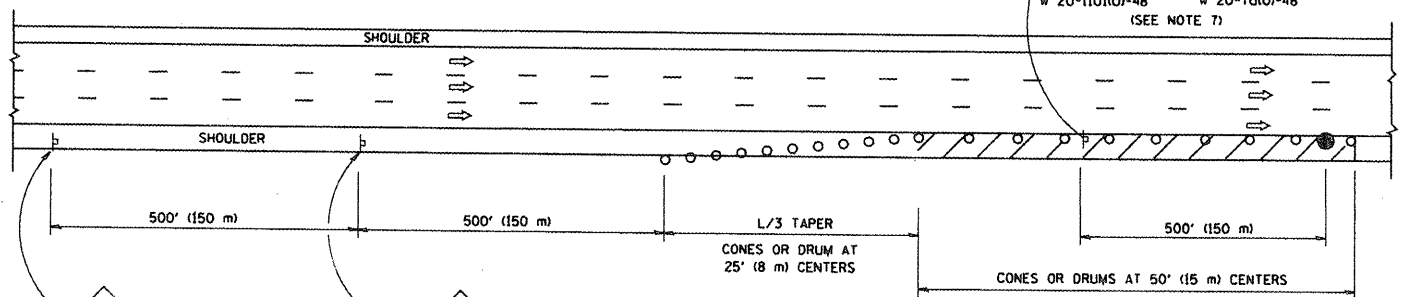
GENERAL NOTES

1. THE "L" DISTANCE EQUALS:

SPEED LIMIT	FORMULAS
45 mph (80 km/h) OR GREATER:	METRIC ENGLISH
	$L = 0.65(W)(S)$ $L = (W)(S)$
	W = WIDTH OF OFFSET IN FEET (METERS)
	S = NORMAL POSTED SPEED MPH (KM/H)
2. PLASTIC DRUMS WITH HIGH PERFORMANCE REFLECTIVE SHEETING AND STEADY BURNING LIGHTS ARE REQUIRED FOR ALL NIGHTTIME CLOSURES.
3. ALL SIGNS SHALL BE POST MOUNTED IF THE CLOSURE TIME EXCEEDS FOUR DAYS.
4. FLASHING LIGHTS SHALL BE USED DURING THE HOURS OF DARKNESS AND SHALL BE INSTALLED ABOVE THE FIRST TWO SETS OF SIGNS.



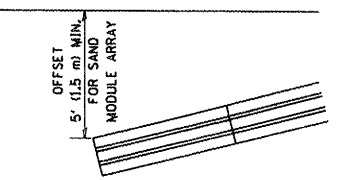
PERMANENT SHOULDER CLOSURE



DAYTIME SHOULDER CLOSURE

THIS DETAIL IS USED WHERE:
1. VEHICLES, EQUIPMENT, WORKERS OR THEIR ACTIVITIES ENCROACH IN AN AREA CLOSER THAN 15' (4.5 m) TO THE EDGE OF PAVEMENT FOR A PERIOD IN EXCESS OF 15 MINUTES.

ARRAY DESIGN PER MANUFACTURER TO BE NCHRP 350 COMPLIANT FOR POSTED SPEED.



DETAIL "A"
IMPACT ATTENUATOR, TEMPORARY
(SEE NOTE 5)

ALL DIMENSIONS ARE IN INCHES (MILLIMETERS) UNLESS OTHERWISE SHOWN.

FILE NAME = W:\data\22x34\col7.dgn

USER NAME = geglionobt
DESIGNED -
DRAWN - D.W.S.
PLOT SCALE = 50,000' / IN.
CHECKED -
PLOT DATE = 1/4/2008
DATE - 11-96

REVISED - J.A.F. 12-02
REVISED - 04-03
REVISED - J.A.F. 12-06
REVISED - S.P.B. 01-07

STATE OF ILLINOIS
DEPARTMENT OF TRANSPORTATION

TRAFFIC CONTROL DETAILS FOR FREEWAY
SHOULDER CLOSURES AND PARTIAL RAMP CLOSURES
SCALE: NONE SHEET NO. 1 OF 1 SHEETS STA. TO STA.

F.A. RTE. #	SECTION	COUNTY	TOTAL SHEETS	SHEET NO.
VAR.	2008-026 56	*	9	9
FED. ROAD DIST. NO. 1 [ILLINOIS] FED. AID PROJECT			CONTRACT NO.	