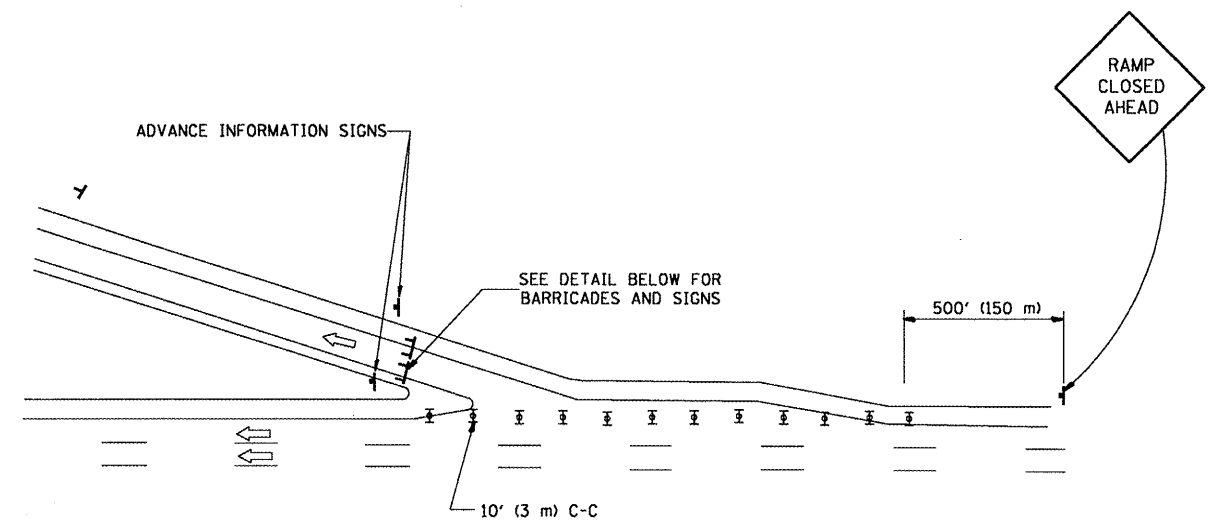
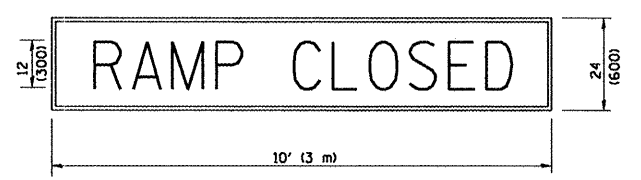


**ENTRANCE RAMP CLOSURE**



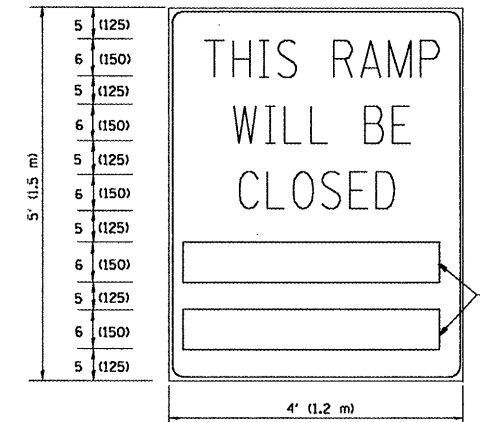
**EXIT RAMP CLOSURE**

**RAMP CLOSURE ADVANCE WARNING SIGN**



BLACK LEGEND ON ORANGE REFLECTORIZED BACKGROUND  
1 (25) BORDER  
THESE SIGNS ARE REQUIRED ON ALL THE EXIT GUIDE SIGNS FOR THE CLOSED EXIT RAMPS.

**RAMP CLOSURE ADVANCE INFORMATION SIGN**



BLACK LEGEND ON WHITE REFLECTORIZED BACKGROUND  
1/2 (12) BORDER

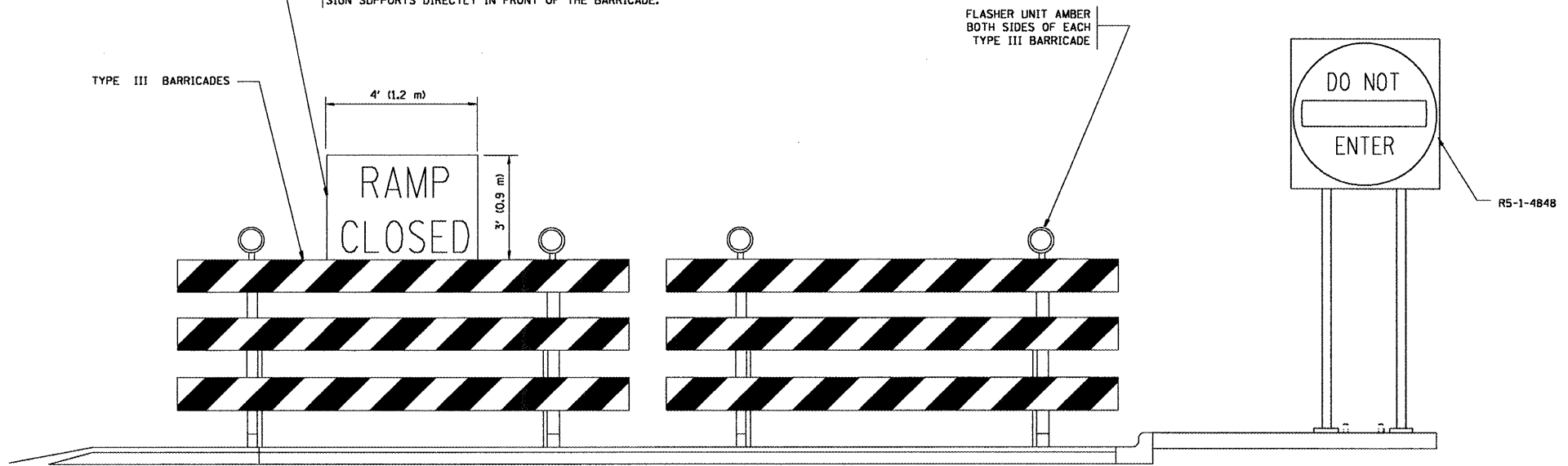
THESE BLANK AREAS SHALL BE FILLED WITH THE DATES AND THE TIME THAT THE RAMP WILL BE CLOSED.

THESE SIGNS ARE REQUIRED ON BOTH SIDES OF THE RAMP, MINIMUM OF 1 WEEK IN ADVANCE OF THE CLOSURE.

**GENERAL NOTES:**

1. CONES MAY BE SUBSTITUTED FOR DRUMS OR TYPE II BARRICADES DURING DAY OPERATIONS. CONES SHALL BE A MINIMUM OF 28 (700) HIGH.
2. STEADY BURN LIGHTS WILL NOT BE REQUIRED FOR DAY OPERATIONS.
3. A FLAGGER SHALL BE POSITIONED AT EACH CLOSED RAMP THAT IS OPEN TO CONSTRUCTION VEHICLES.
4. ALL ROUTE MARKERS AND TRAILBLAZER ASSEMBLIES WHICH DIRECT MOTORISTS TO A CLOSED ENTRANCE RAMP SHALL BE COVERED.
5. THE SIGNING AND BARRICADING WHICH IS REQUIRED BY THIS DETAIL SHALL BE INCLUDED IN THE COST OF TRAFFIC CONTROL AND PROTECTION (EXPRESSWAYS).
6. AUTHORIZATION FROM THE DISTRICT'S BUREAU OF TRAFFIC IS REQUIRED FOR ALL RAMP CLOSURES.
7. THE RAMP CLOSURE ADVANCE INFORMATION SIGNS SHALL BE ERECTED IF THE CLOSURE TIME EXCEEDS TWENTY-FOUR (24) HOURS. ADDITIONAL ADVANCE WARNING SIGNS ON EXIT GUIDE SIGNING WILL BE REQUIRED FOR EXIT RAMP CLOSURES THAT EXCEED TWENTY FOUR (24) HOURS IN LENGTH.

THE "RAMP CLOSED" SIGN SHALL BE B/W WITH 8 (200) CAPS. IF A TYPE III BARRICADE WITH AN ATTACHED SIGN PANEL WHICH MEETS NCHRP 350 IS NOT AVAILABLE, THE SIGNS MAY BE MOUNTED ON NCHRP 350 TEMPORARY SIGN SUPPORTS DIRECTLY IN FRONT OF THE BARRICADE.



**DETAIL FOR REQUIRED BARRICADES & SIGNS**

**SYMBOLS**

- ▬ TYPE II BARRICADE, DRUM OR VERTICAL BARRICADE WITH STEADY BURN MONO-DIRECTIONAL LIGHT
- ▬ TYPE III BARRICADE WITH FLASHING LIGHT

ALL DIMENSIONS ARE IN INCHES (MILLIMETERS) UNLESS OTHERWISE SHOWN.

**STATE OF ILLINOIS  
DEPARTMENT OF TRANSPORTATION**

**FREEWAY ENTRANCE AND EXIST RAMP  
CLOSURE DETAILS**

|   |             |             |                    |           |
|---|-------------|-------------|--------------------|-----------|
| F.A. RTE.                                       | SECTION     | COUNTY      | TOTAL SHEETS       | SHEET NO. |
| VAR.  | 2008-049 PP | COOK & DUP. | 13                 | 8         |
| TC-08   |             |             | CONTRACT NO. 60E98 |           |
| FED. ROAD DIST. NO. 1 ILLINOIS FED. AID PROJECT |             |             |                    |           |

SCALE: NONE SHEET NO. 1 OF 1 SHEETS STA. TO STA.

|  |                    |                |                         |
|--|--------------------|----------------|-------------------------|
| FILE NAME =                            | USER NAME = smthkl | DESIGNED - DWS | REVISED - DWS 12-94     |
| \\dist\ntfs2\users\smthkl\Desktop\CADD | DETAILS\tc08.dgn   | DRAWN -        | REVISED - DWS/JAF 12-02 |
|  |                    | CHECKED -      | REVISED - JAF 02-06     |
|  |                    | DATE - 02-83   | REVISED - SPB 01-07     |