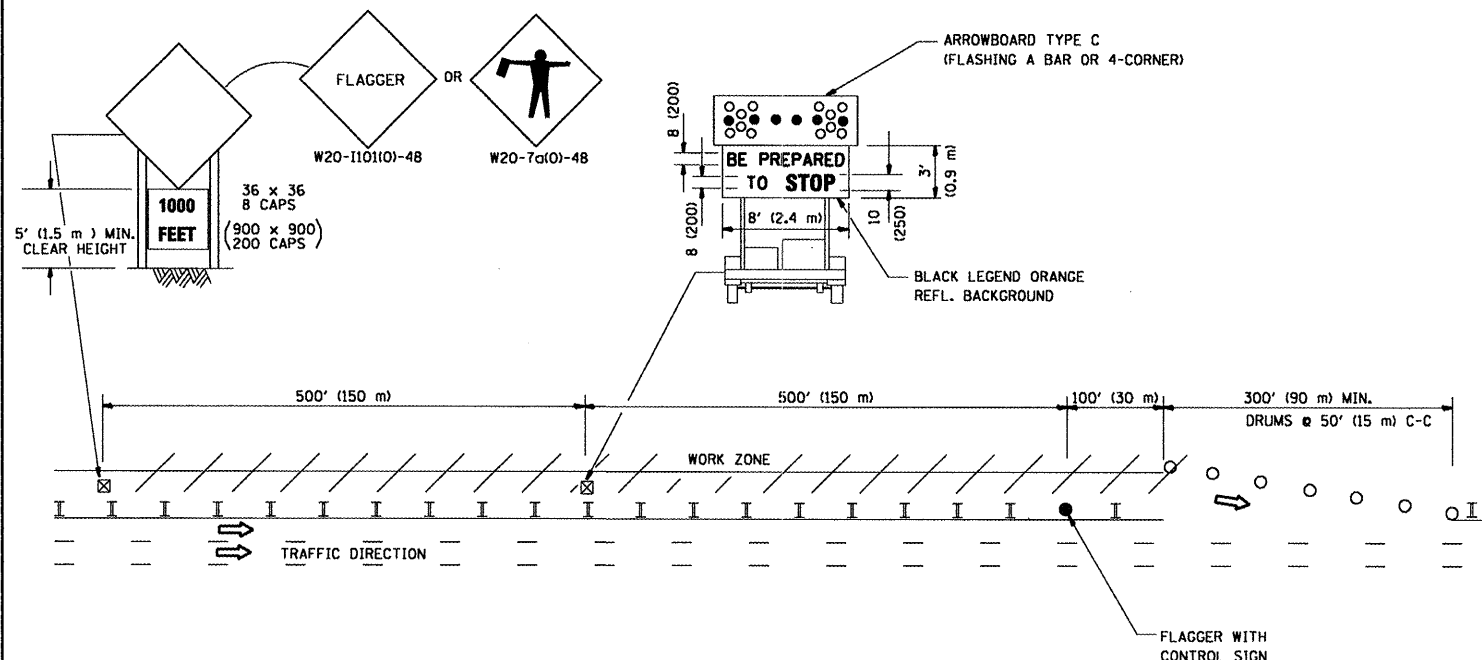
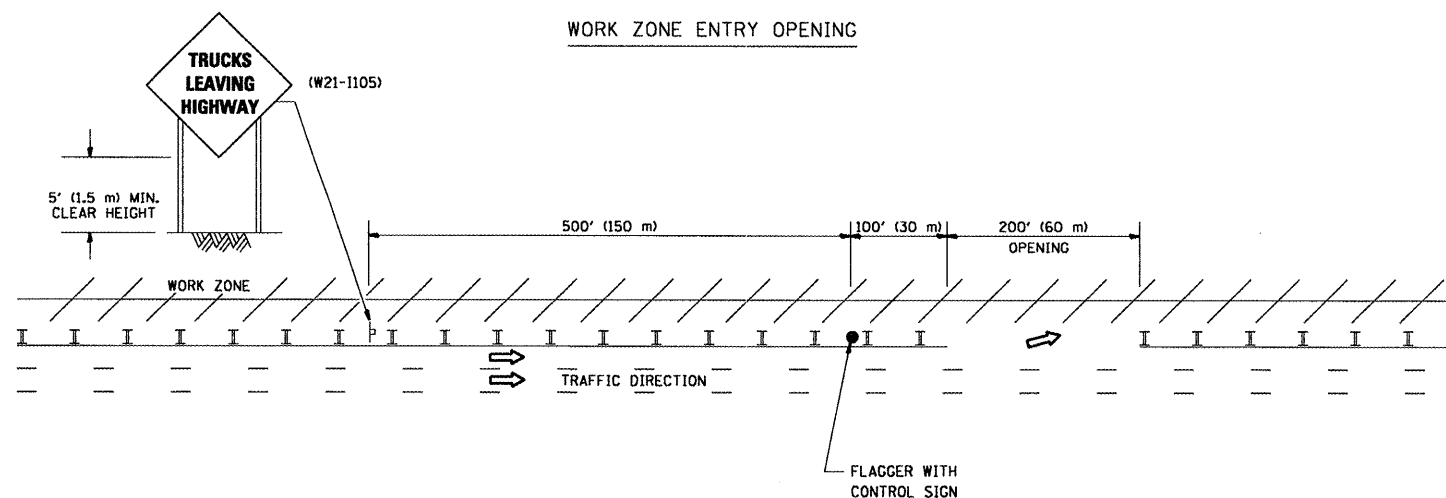


SIGNING FOR FLAGGING OPERATIONS AT WORK ZONE OPENINGS

WORK ZONE EXIT OPENING



WORK ZONE ENTRY OPENING



NOTES:

1. The Arrowboard, the Flagger Ahead trailer mounted sign, and the Trucks Leaving Highway sign shall be removed or turned away from traffic and the exit and entry openings shall be closed when the flagging operation ceases.
2. Work Zone Exit Openings should be a minimum of one half mile apart.
3. Exiting the work zone at any place other than at a Work Zone Exit Opening will be prohibited.
4. All vehicles shall enter the work zone at entry openings, using their turn signals to warn motorists

ALL DIMENSIONS ARE IN INCHES (MILLIMETERS)
UNLESS OTHERWISE SHOWN

FILE NAME =	USER NAME = smithk1	DESIGNED -	REVISED - D.W.S. 08-98	STATE OF ILLINOIS DEPARTMENT OF TRANSPORTATION	SIGNING FOR FLAGGING OPERATIONS AT WORK ZONE OPENINGS	F.A. RTE.	SECTION	COUNTY	TOTAL SHEETS	SHEET NO.
\\dist1\ntfa2\users\smithk1\Desktop\CADD	DETAILS\to18.dgn	DRAWN -	REVISED - J.A.F. 04-03			VAR.	2008-049 PP	COOK & DUP.	13	13
PLOT SCALE = 100.000' / IN.	CHECKED -	REVISED - J.A.F. 02-06				TC-18		CONTRACT NO. 60E98		
PLOT DATE = 6/24/2008	DATE -	REVISED - S.P.B. 01-07				SCALE: NONE	SHEET NO. 1 OF 1 SHEETS	STA.	TO STA.	FED. ROAD DIST. NO. 1 ILLINOIS FED. AID PROJECT