

FOR INDEX OF SHEETS, SEE SHEET NO. 2

STATE OF ILLINOIS
DEPARTMENT OF TRANSPORTATION
DIVISION OF HIGHWAYS

D-91-283-01		CONTRACT NO: 62253	
F.A.I. RTE.	SECTION	COUNTY	TOTAL SHEETS
57		WILL	303
+ 6			309

DESIGN DESIGNATION

MANHATTAN-MONEE ROAD - 3434 (10) SRA 26.65 (PCC-20)
I-57 RAMP B (SB EXIT) - 821 (10) ARTERIAL 5.69 (PCC-20)
I-57 RAMP D (NB EXIT) - 310 (10) ARTERIAL 1.91 (PCC-20)

TRAFFIC DATA

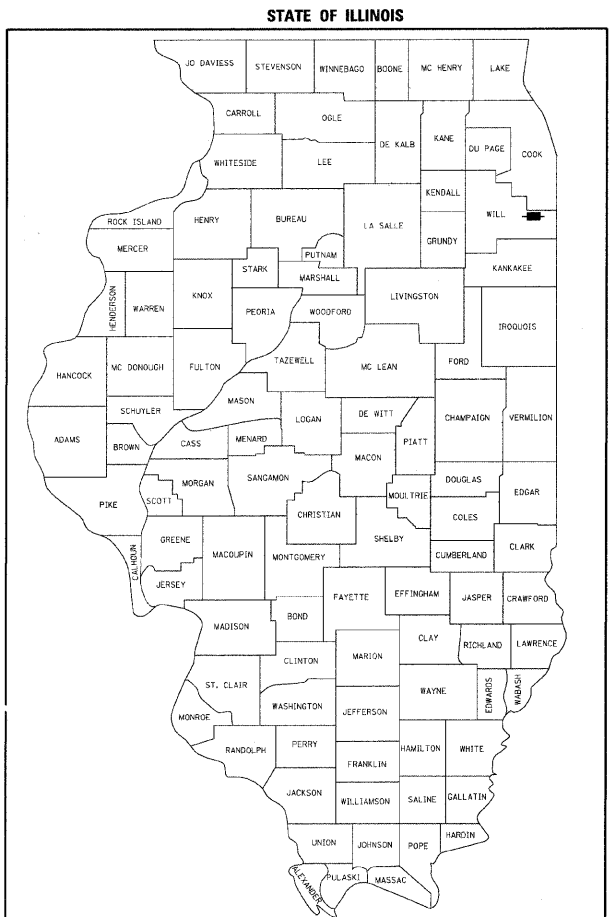
I-57 (FAI 57)
1997 ADT = 41,100 - 47,000
2010 ADT = 62,550 - 72,800

DESIGN SPEED = 70 MPH
POSTED SPEED = 65 MPH

MANHATTAN-MONEE ROAD
1997 ADT = 8,400 - 17,000
2010 ADT = 16,200 - 21,500

DESIGN SPEED = 40 MPH
POSTED SPEED = 35 MPH

PROPOSED HIGHWAY PLANS
MANHATTAN - MONEE ROAD OVER I-57 (FAI ROUTE I-57)
INTERCHANGE AND ROADWAY RECONSTRUCTION,
ADDITIONAL LANES, BRIDGE REPLACEMENT,
TRAFFIC SIGNALS, AND LIGHTING
SECTION 99(1&2) R-3&9-1HB-1-BR-2
PROJECT NO.: IM-057-7(276)335
WILL COUNTY
C-91-283-01



STATE OF ILLINOIS
DEPARTMENT OF TRANSPORTATION
DIVISION OF HIGHWAYS

SUBMITTED MARCH 19, 2008

Diana M. O'Keefe
DEPUTY DIRECTOR OF HIGHWAYS, REGION ENGINEER

June 27, 2008
Eric E. Haran
ENGINEER OF DESIGN AND ENVIRONMENT

June 27, 2008
Christina M. Reed
DIRECTOR OF HIGHWAYS, CHIEF ENGINEER

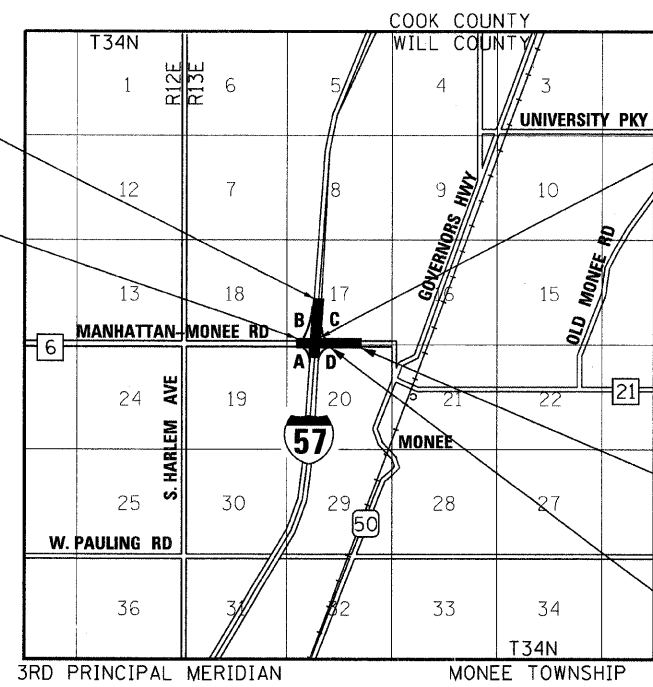
PROJECT DESCRIPTION

THE PROJECT CONSISTS OF THE RECONSTRUCTION OF MANHATTAN-MONEE ROAD AND PORTIONS OF THE ENTRANCE AND EXIT RAMP WITH I-57, WIDENING AND RESURFACING WORK FOR AN AUXILIARY LANE ALONG I-57 AT RAMP B, AND REMOVAL AND REPLACEMENT OF STRUCTURE (SN:099-D159) ON MANHATTAN-MONEE ROAD OVER I-57 AND A RETAINING WALL (SN:099-W022). ROADWAY CONSTRUCTION INCLUDES EARTHWORK, GUARDRAIL, EROSION CONTROL, LIGHTING, TRAFFIC SIGNALS, DRAINAGE AND OTHER APPURTENANT WORK.

PROJECT IS LOCATED IN THE VILLAGE OF MONEE

BEGIN PROJECT RAMP B STA. 200+00 = I-57 STA. 1385+00

BEGIN PROJECT MANHATTAN-MONEE ROAD STA. 14024+23.67

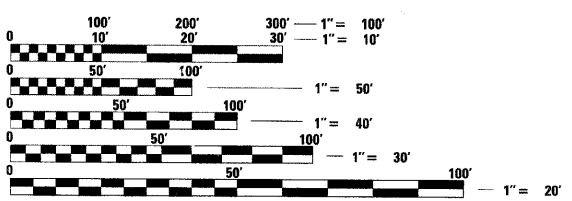


MANHATTAN-MONEE ROAD OVER I-57 STA. 14037+43.90 MANHATTAN-MONEE ROAD STA. 1348+92.58 I-57 STRUCTURE REPLACEMENT SN: 099-0159 (E) 099-4647 (P)

END PROJECT MANHATTAN-MONEE ROAD STA. 14050+81.74

RETAINING WALL SN: 099-W022

LOCATION MAP SCALE
1" = 1 MILE (APPROXIMATE)
GROSS LENGTH OF PROJECT = 6,419 FEET (1.216 MILES)
NET LENGTH OF PROJECT = 6,419 FEET (1.216 MILES)



FULL SIZE PLANS HAVE BEEN PREPARED USING STANDARD ENGINEERING SCALES. REDUCED SIZED PLANS WILL NOT CONFORM TO STANDARD SCALES. IN MAKING MEASUREMENTS ON REDUCED PLANS, THE ABOVE SCALES MAY BE USED.

J.U.L.I.E.
JOINT UTILITY LOCATION INFORMATION FOR EXCAVATION
1-800-892-0123

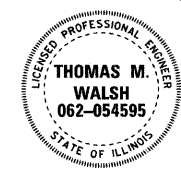
CONTRACT NO: 62253



P. K. Gandhi
SIGNATURE
DATE Feb. 28, 2008
11-30-2009
LICENSE EXPIRES
SIGNATURE AND SEAL APPLY TO SHEETS 106-129, 134-151



Thomas M. Walsh
SIGNATURE
DATE 3/4/2008
11-30-2008
LICENSE EXPIRES
SIGNATURE AND SEAL APPLY TO SHEETS 152-182



Eric E. Haran
SIGNATURE
DATE FEB. 29, 2008
11-30-2009
LICENSE EXPIRES
SIGNATURE AND SEAL APPLY TO SHEETS 1-76, 84-105, 200-303

PRINTED BY THE AUTHORITY OF THE STATE OF ILLINOIS

DESIGN FIRM REGISTRATION NO. 184-000490
 118 SOUTH CLINTON STREET CHICAGO, IL 60661
 PHONE : 312.648.8900 FAX : 312.648.0204
 REGION 1/DISTRICT 1 - DESIGN/CONSULTANT PROJECT MANAGER, BRIAN H. KUTTAB 847-705-4431