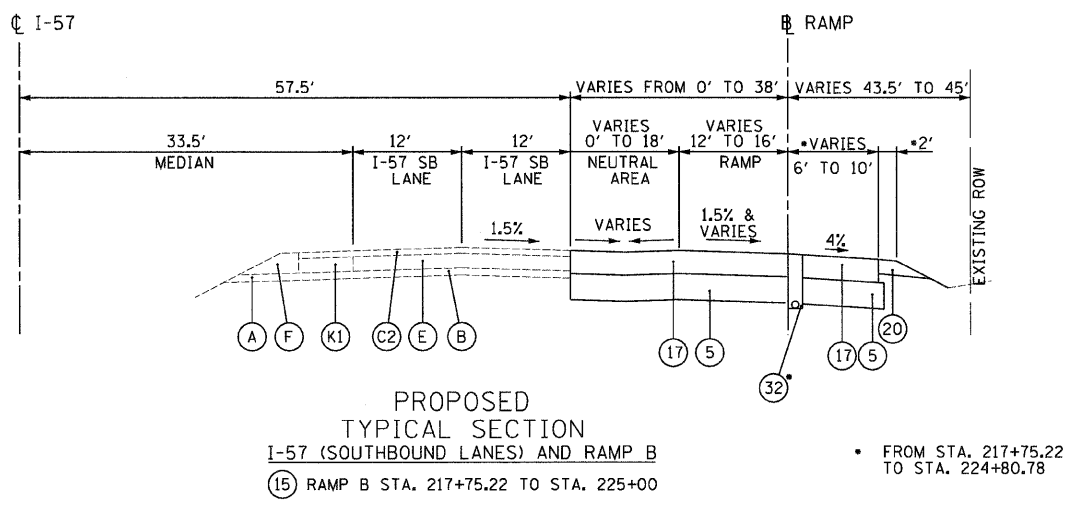
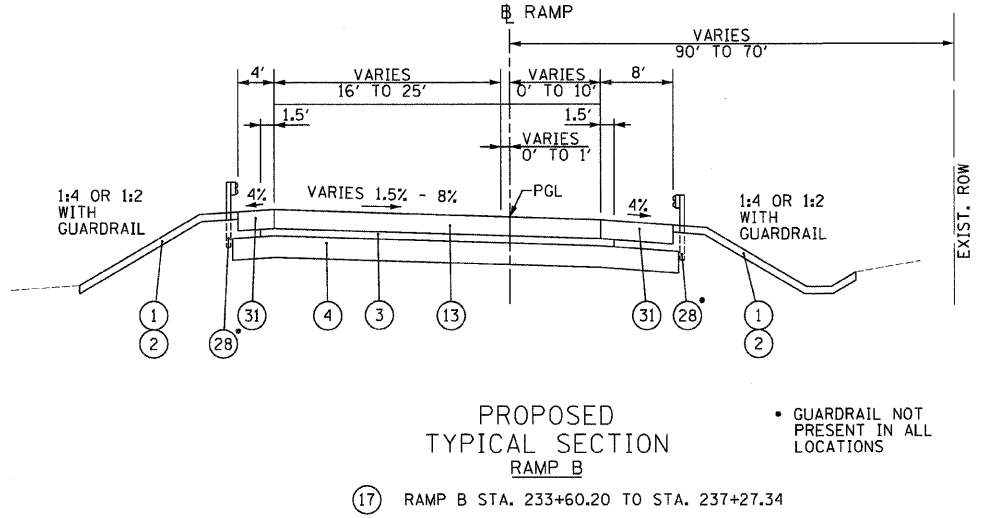
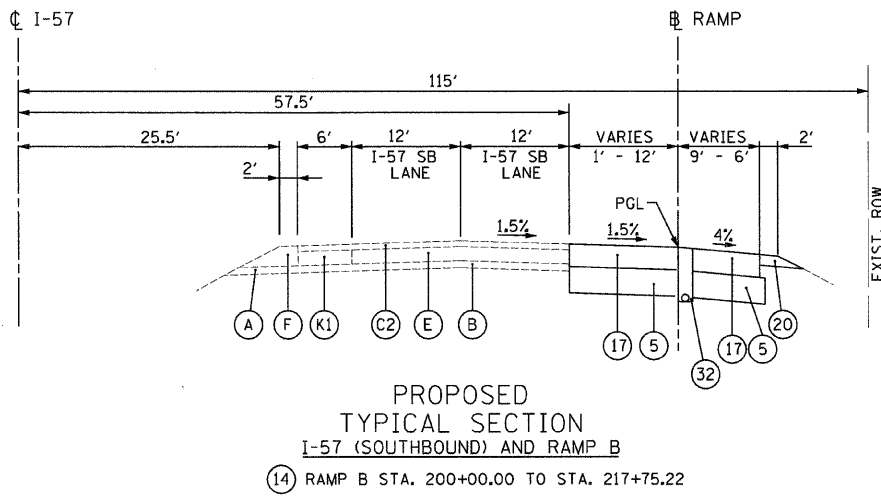
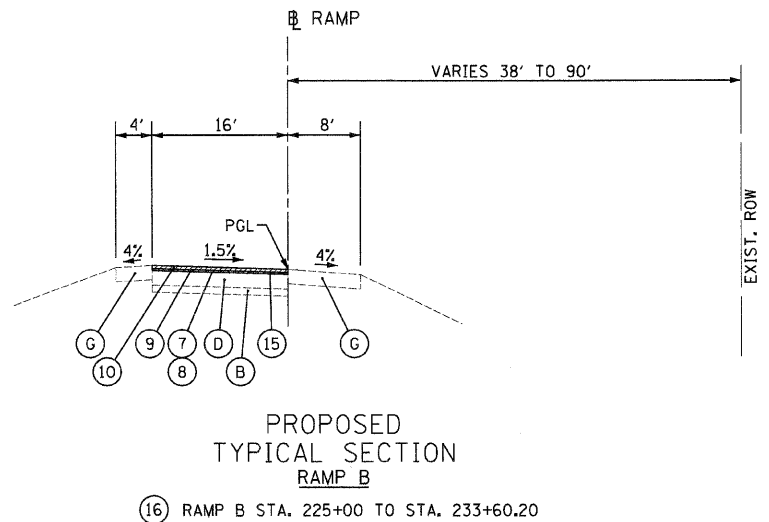
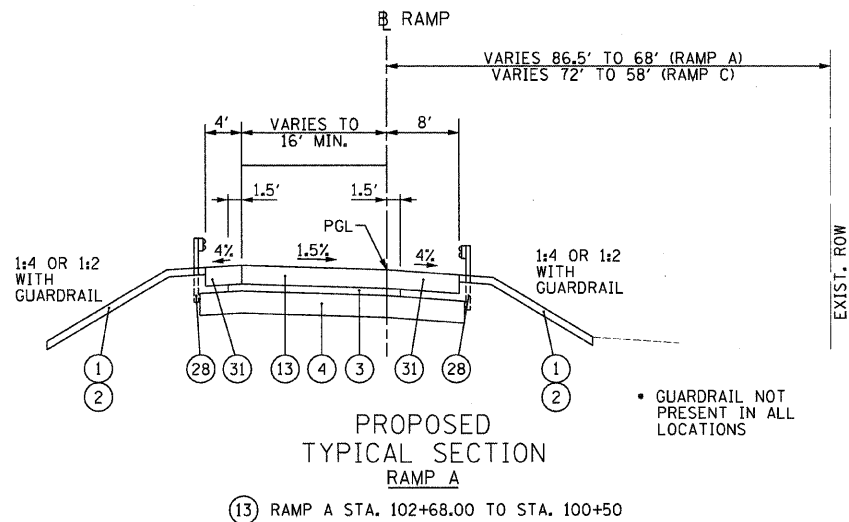


F.A.I. RTE.	SECTION	COUNTY	TOTAL SHEETS	SHEET NO.
57	*	WILL	303	18
STA.		TO STA.		
FED. ROAD DIST. NO.		ILLINOIS	FED. AID PROJECT	
CONTRACT No. 62253		99182) R-389-1HB-1-BR-2		



- EXISTING LEGEND:**
- (A) EXISTING SUB-BASE GRANULAR MATERIAL, TYPE C, 4" AND VARIES
  - (B) EXISTING STABILIZED SUB-BASE, 4" AND VARIES
  - (C1) EXISTING HOT-MIX ASPHALT PAVEMENT, 3" AND VARIES
  - (C2) EXISTING HOT-MIX ASPHALT PAVEMENT, 3/4" AND VARIES
  - (D) EXISTING PORTLAND CEMENT PAVEMENT, 8" AND VARIES
  - (E) EXISTING CONTINUOUSLY REINFORCED PORTLAND CEMENT CONCRETE PAVEMENT, 8" AND VARIES
  - (F) EXISTING AGGREGATE SHOULDERS
  - (G) EXISTING HOT-MIX ASPHALT SHOULDER, 8" AND VARIES
  - (H) EXISTING HOT-MIX ASPHALT SHOULDER, 10" AND VARIES (WHEN NO GUARDRAIL IS PRESENT - HOT-MIX ASPHALT, 3" - AGGREGATE BASE, 5" AND VARIES)
  - (I) EXISTING HOT-MIX ASPHALT SHOULDER, 10" AND VARIES
  - (J) EXISTING HOT-MIX ASPHALT STABILIZATION, 6" AND VARIES (WHEN GUARDRAIL IS PRESENT)
  - (K1) EXISTING STABILIZED SHOULDER, 8" AND VARIES
  - (K2) EXISTING STABILIZED SHOULDER, 11" AND VARIES
  - (L) EXISTING COMBINATION CONCRETE CURB AND GUTTER
  - (M) EXISTING STEEL PLATE BEAM GUARDRAIL

- PROPOSED LEGEND:**
- (1) TOPSOIL EXCAVATION AND PLACEMENT, 4"
  - (2) SEEDING, CLASS 2A, 3, 4 (SEE LANDSCAPING SHEETS FOR AREAS)
  - (3) STABILIZED SUB-BASE - HOT - MIX ASPHALT, 4 1/2" (IN 2 LIFTS)
  - (4) AGGREGATE SUBGRADE 12"
  - (5) AGGREGATE SUBGRADE 14.25"
  - (6) SUBBASE GRANULAR MATERIAL TYPE B, 4"
  - (7) BITUMINOUS MATERIALS (PRIME COAT)
  - (8) AGGREGATE (PRIME COAT)
  - (9) POLYMERIZED LEVELING BINDER (MACHINE METHOD), IL-4.75, N50, VARIES 1" TO 4.5"
  - (10) POLYMERIZED HOT - MIX ASPHALT SURFACE COURSE, MIX "F", N90, 1 1/2"
  - (11) PCC BASE COURSE, 12"
  - (12) HOT - MIX ASPHALT SURFACE COURSE, MIX "D", N70, 1 1/2"
  - (13) PORTLAND CEMENT CONCRETE PAVEMENT, 11" (JOINTED)
  - (14) HOT - MIX ASPHALT SURFACE REMOVAL, 1"
  - (15) HOT - MIX ASPHALT SURFACE REMOVAL, 2 3/4"
  - (16) NOT USED
  - (17) HOT-MIX ASPHALT PAVEMENT (FULL-DEPTH), 12 3/4"
  - (18) SAW CUTS (INCIDENTAL TO REMOVAL ITEMS)
  - (19) TIE BARS PER STANDARD 420101 (INCLUDED IN PAVEMENT ITEMS)
  - (20) AGGREGATE SHOULDERS, TYPE B, 6"
  - (21) HOT - MIX ASPHALT SHOULDERS, 8"
  - (22) COMBINATION CONCRETE CURB AND GUTTER, TYPE B-6.18
  - (23) COMBINATION CONCRETE CURB AND GUTTER, TYPE B-6.24
  - (24) COMBINATION CONCRETE CURB AND GUTTER, TYPE B-9.12
  - (25) COMBINATION CONCRETE CURB AND GUTTER, TYPE M-2.12
  - (26) CONCRETE MEDIAN SURFACE, 6"
  - (27) CORRUGATED MEDIAN
  - (28) STEEL PLATE BEAM GUARDRAIL, TYPE A
  - (29) COMBINATION CONCRETE CURB AND GUTTER, TYPE M-4.12
  - (30) TOPSOIL EXCAVATION AND PLACEMENT, 24"
  - (31) PORTLAND CEMENT CONCRETE SHOULDERS, 11"
  - (32) PIPE UNDERDRAINS, 4"

**NOTES:**  
 1.) EXISTING PAVEMENT WIDTHS SHOWN ARE NOMINAL AND MAY VARY SLIGHTLY FROM THE DIMENSIONS INDICATED.  
 2.) STATIONING LIMITS SHOWN HERE ARE APPROXIMATE.

**SECTION (13)**

STRUCTURAL DESIGN TRAFFIC: YEAR 2010  
 PV = 2,815 SU = 142 MU = 60  
 ROAD/STREET CLASSIFICATION: CLASS 1  
 PERCENT OF STRUCTURAL DESIGN TRAFFIC IN DESIGN LANE:  
 P = 93.3% S = 4.7% M = 2.0%  
 TRAFFIC FACTOR: ACTUAL TF = 1.26  
 MINIMUM TF = 1.26  
 SUBGRADE SUPPORT RATING  
 SSR = POOR

**SECTIONS (14) (15) (16) (17)**

STRUCTURAL DESIGN TRAFFIC: YEAR 2010  
 PV = 12,742 SU = 642 MU = 273  
 ROAD/STREET CLASSIFICATION: CLASS 1  
 PERCENT OF STRUCTURAL DESIGN TRAFFIC IN DESIGN LANE:  
 P = 93.3% S = 4.7% M = 2.0%  
 TRAFFIC FACTOR: ACTUAL TF = 5.69  
 MINIMUM TF = 5.69  
 SUBGRADE SUPPORT RATING  
 SSR = POOR

REVISIONS		ILLINOIS DEPARTMENT OF TRANSPORTATION I-57 AT MANHATTAN - MONEE ROAD
NAME	DATE	
		PROPOSED TYPICAL SECTIONS RAMPS A AND B  SCALE: VERT. NTS HORIZ. DATE 9/19/2008 DRAWN BY ML, BDC, NS CHECKED BY TMW

DESIGN FIRM REGISTRATION  
 No. 184-000450  
**Clark Dietz**  
 ENGINEERS  
 118 SOUTH CLINTON STREET  
 SUITE 800  
 CHICAGO, IL 60661  
 PHONE : 312.648.9900  
 FAX : 312.648.0204

F:\102231\plans\sheet\02231\5510106.dgn  
 8/1/2008