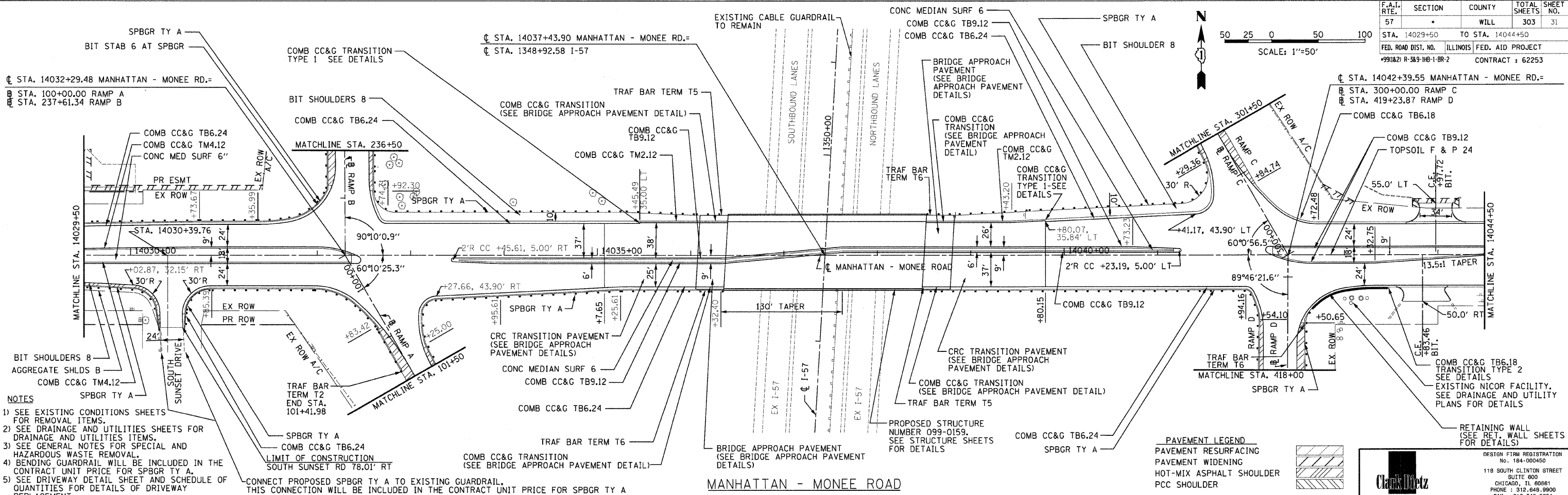
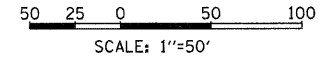


F.A.I. RTE.	SECTION	COUNTY	TOTAL SHEETS	SHEET NO.
57		WILL	303	31
STA. 14029+50 TO STA. 14044+50				
FED. ROAD DIST. NO. ILLINOIS		FED. AID PROJECT		
#99182) R-389-1H-1-BR-2		CONTRACT : 62253		



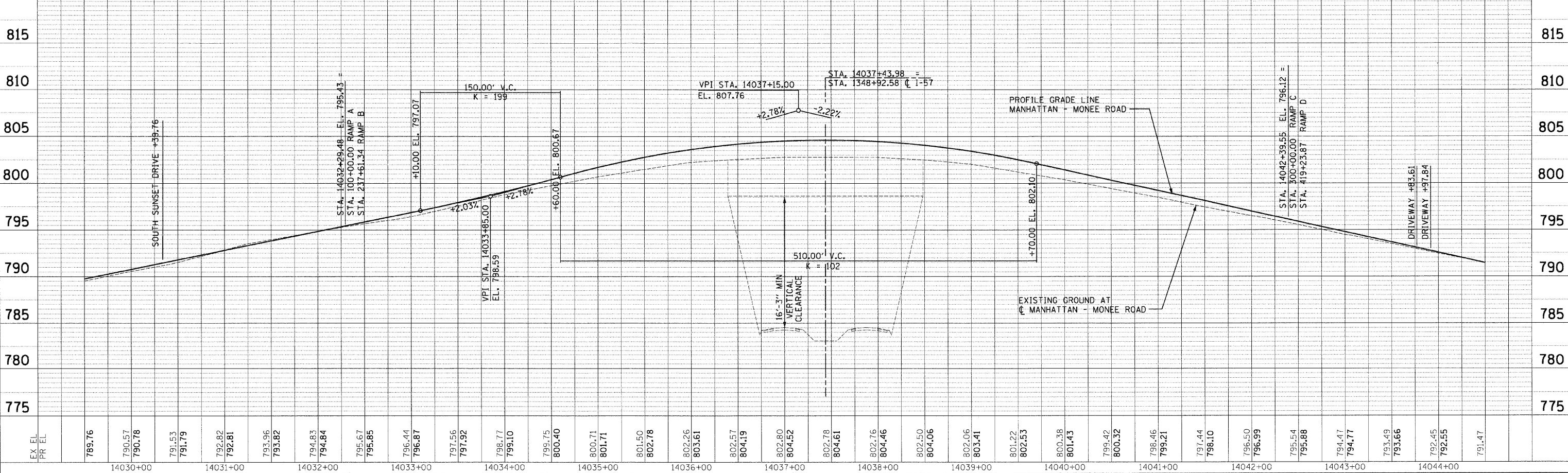
- NOTES**
- SEE EXISTING CONDITIONS SHEETS FOR REMOVAL ITEMS.
 - SEE DRAINAGE AND UTILITIES SHEETS FOR DRAINAGE AND UTILITIES ITEMS.
 - SEE GENERAL NOTES FOR SPECIAL AND HAZARDOUS WASTE REMOVAL.
 - BENDING GUARDRAIL WILL BE INCLUDED IN THE CONTRACT UNIT PRICE FOR SPBGR TY A.
 - SEE DRIVEWAY DETAIL SHEET AND SCHEDULE OF QUANTITIES FOR DETAILS OF DRIVEWAY REPLACEMENT.

PAVEMENT LEGEND

[Hatched Pattern]	PAVEMENT RESURFACING
[Hatched Pattern]	PAVEMENT WIDENING
[Hatched Pattern]	HOT-MIX ASPHALT SHOULDER
[Hatched Pattern]	PCC SHOULDER

Clark Dietz
ENGINEERS

DESIGN FIRM REGISTRATION
No. 184-000450
118 SOUTH CLINTON STREET
SUITE 600
CHICAGO, IL 60661
PHONE : 312.649.9900
FAX : 312.649.0204



PLAN AND PROFILE: MANHATTAN - MONEE ROAD - STA. 14029+50 TO 14044+50

DATE	BY	REVISIONS
		ALIGNED, CHECKED, PLOTTED, CADD FILE NAME

DATE	BY	REVISIONS
		GRADES CHECKED, PLOTTED, STRUCTURE NOTATIONS CHG'D

p:\0223\plans\sheet\10223\p0102.dgn
8/1/2008