

F.A.I. RTE.	SECTION	COUNTY	TOTAL SHEETS	SHEET NO.
57	*	WILL	303	36

STA. ** TO STA. **

FED. ROAD DIST. NO. ILLINOIS FED. AID PROJECT

CONTRACT : 62253

CONTRACT : 62253

RAMP C - STA. 301+50 TO STA. 302+96

RAMP D - STA. 415+59.97 TO STA. 418+00

PLAN	REVISIONS	DATE

EXIST. CURVE CD211C1
 PI STA. = 409+11.94
 $\Delta = 35^\circ 58' 53''$ (RT)
 $D = 8^\circ 20' 38''$
 $R = 686.67'$
 $T = 222.99'$
 $L = 431.23'$
 $E = 35.30'$
 $e = \text{---}$
 $T.R. = \text{---}$
 $S.E. RUN = \text{---}$
 P.C. STA. = 406+88.95
 P.T. STA. = 411+20.17

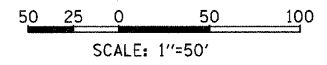
PROP. CURVE CD211C2
 PI STA. = 415+49.00
 $\Delta = 42^\circ 08' 08''$ (LT)
 $D = 12^\circ 49' 32''$
 $R = 446.73'$
 $T = 172.09'$
 $L = 328.53'$
 $E = 32.00'$
 $e = \text{---}$
 $T.R. = \text{---}$
 $S.E. RUN = \text{---}$
 P.C. STA. = 413+76.91
 P.T. STA. = 417+05.44

EXIST. CURVE CC211C1
 PI STA. = 307+55.24
 $\Delta = 32^\circ 10' 28''$ (RT)
 $D = 8^\circ 18' 33''$
 $R = 689.55'$
 $T = 198.86'$
 $L = 387.22'$
 $E = 28.10'$
 $e = \text{---}$
 $T.R. = \text{---}$
 $S.E. RUN = \text{---}$
 P.C. STA. = 305+56.38
 P.T. STA. = 309+43.60

- NOTES**
- 1) SEE EXISTING CONDITIONS SHEETS FOR REMOVAL ITEMS
 - 2) SEE DRAINAGE AND UTILITIES SHEETS FOR DRAINAGE AND UTILITIES ITEMS
 - 3) SEE GENERAL NOTES FOR SPECIAL AND HAZARDOUS WASTE REMOVAL

PAVEMENT LEGEND

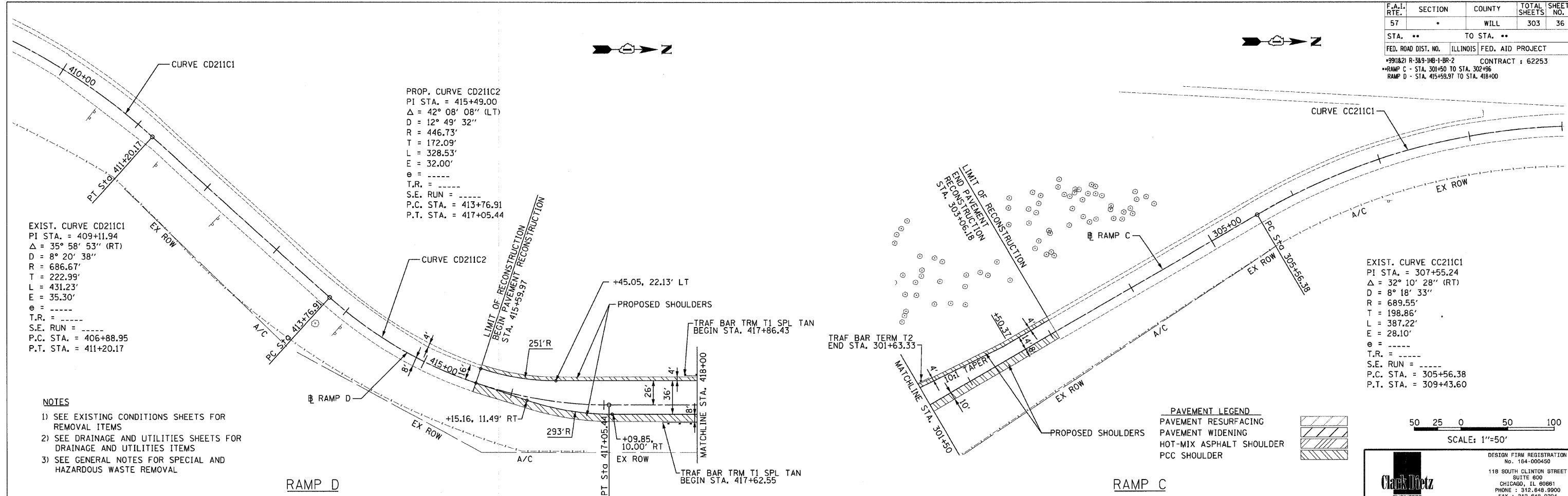
	PAVEMENT RESURFACING
	PAVEMENT WIDENING
	HOT-MIX ASPHALT SHOULDER
	PCC SHOULDER



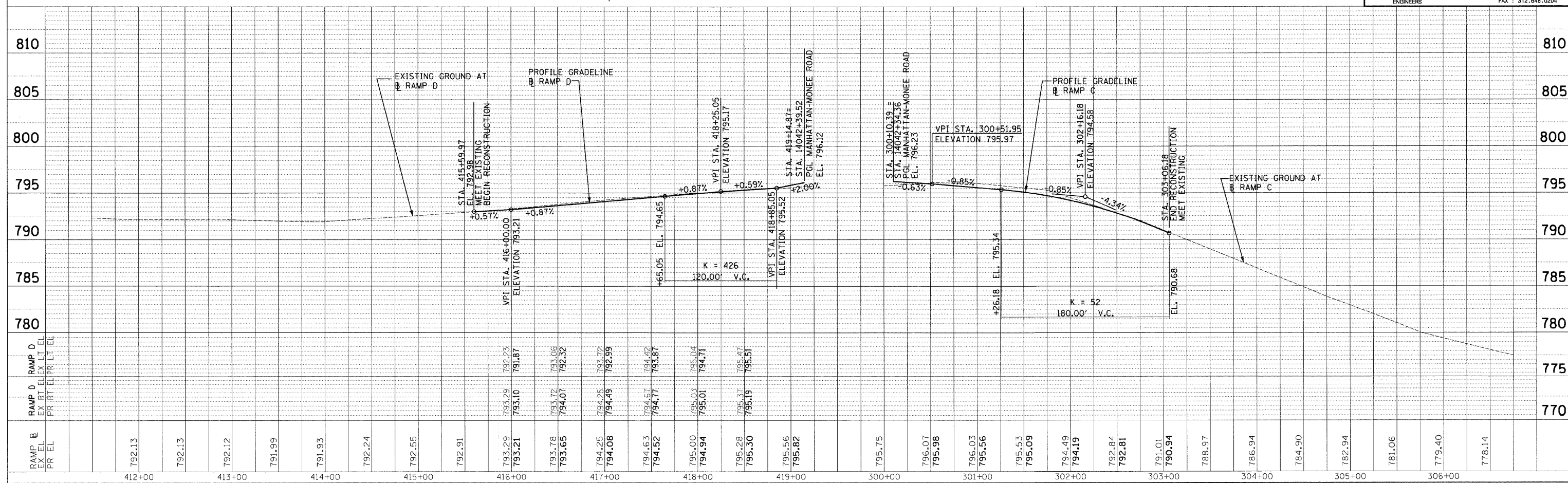
Clark Dietz
 ENGINEERS

DESIGN FIRM REGISTRATION
 No. 164-000450

118 SOUTH CLINTON STREET
 SUITE 800
 CHICAGO, IL 60661
 PHONE : 312.848.9900
 FAX : 312.848.0204



PROFILE	REVISIONS	DATE



PLAN AND PROFILE: RAMP C - STA. 301+50 TO STA. 309+00 AND RAMP D - STA. 410+00 TO STA. 418+00

p:\022231\plans\sheet\02231sp0107.dgn
 8/17/2008