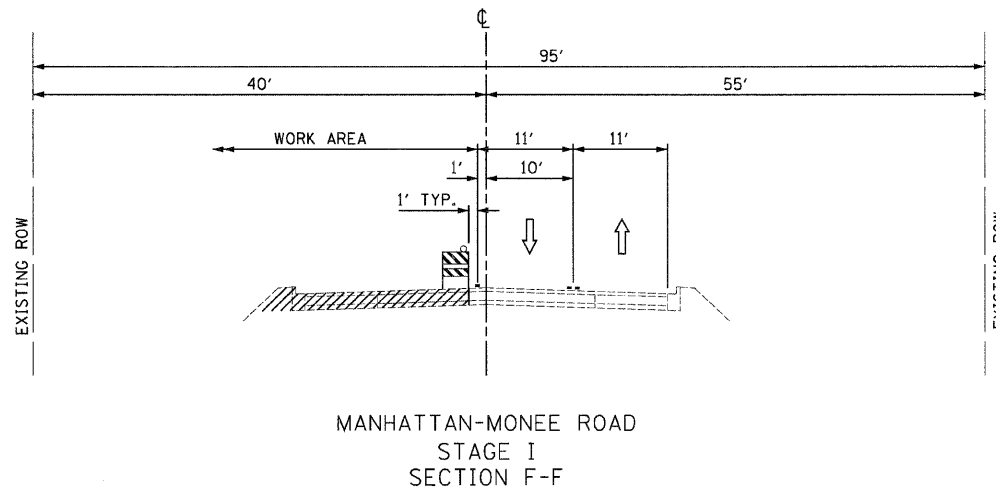
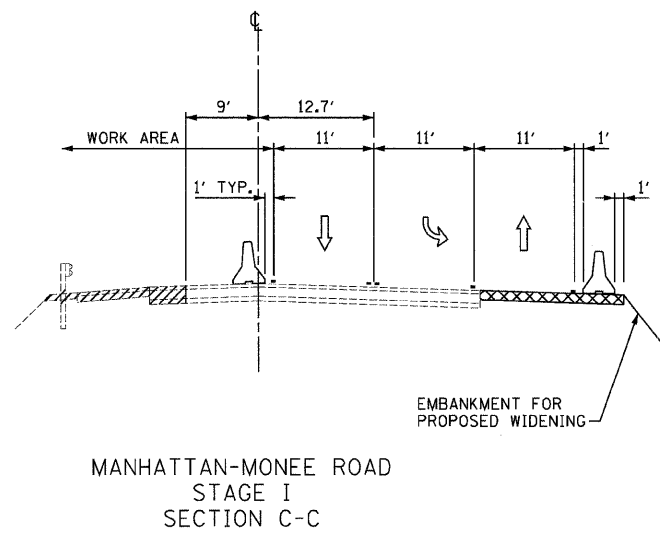
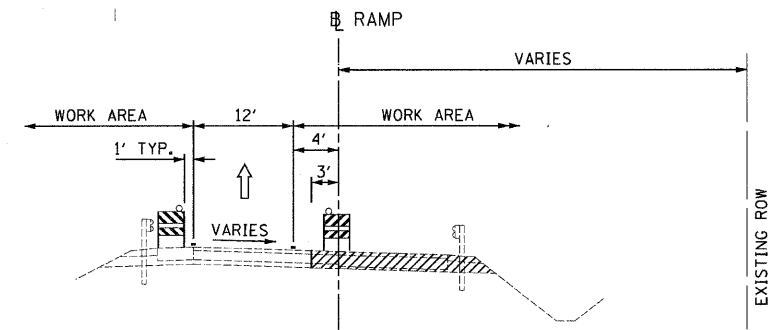
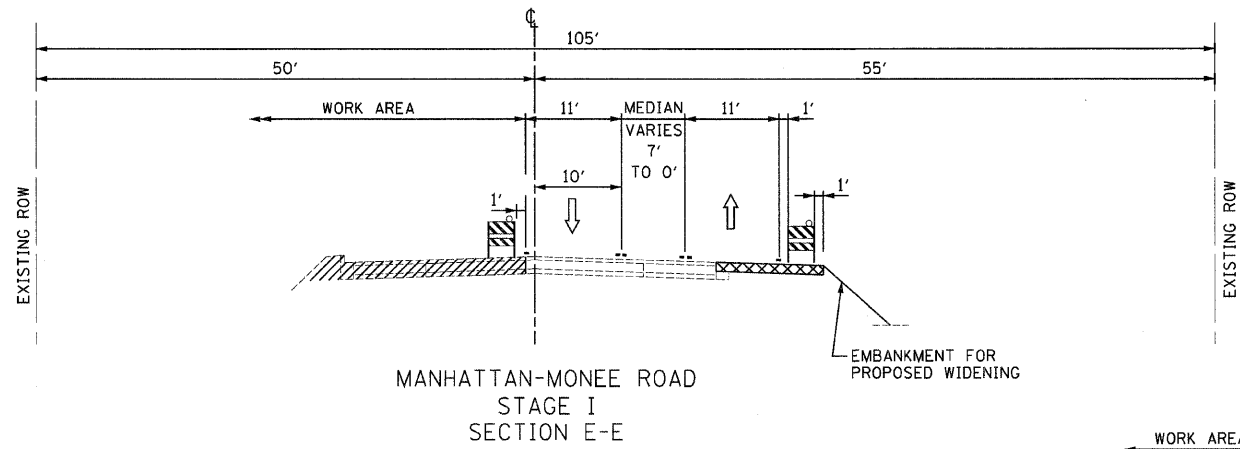
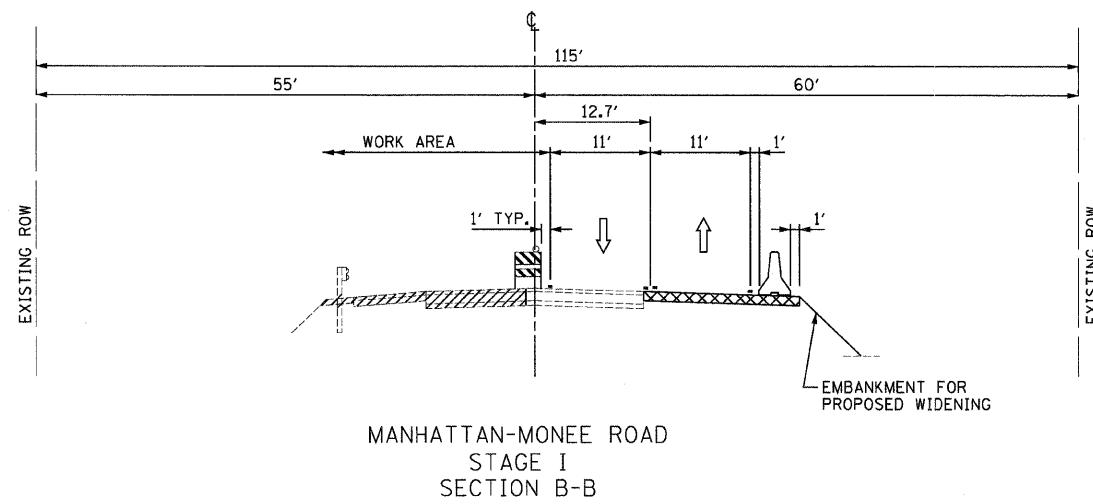
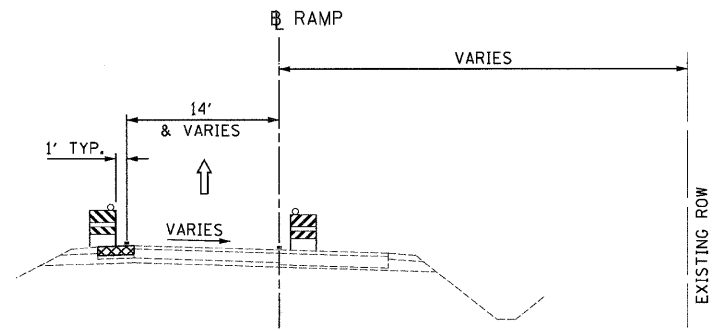
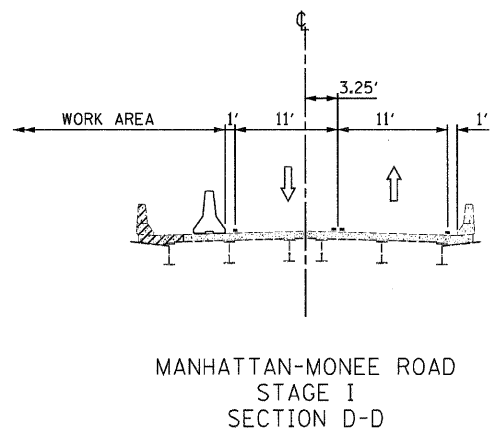
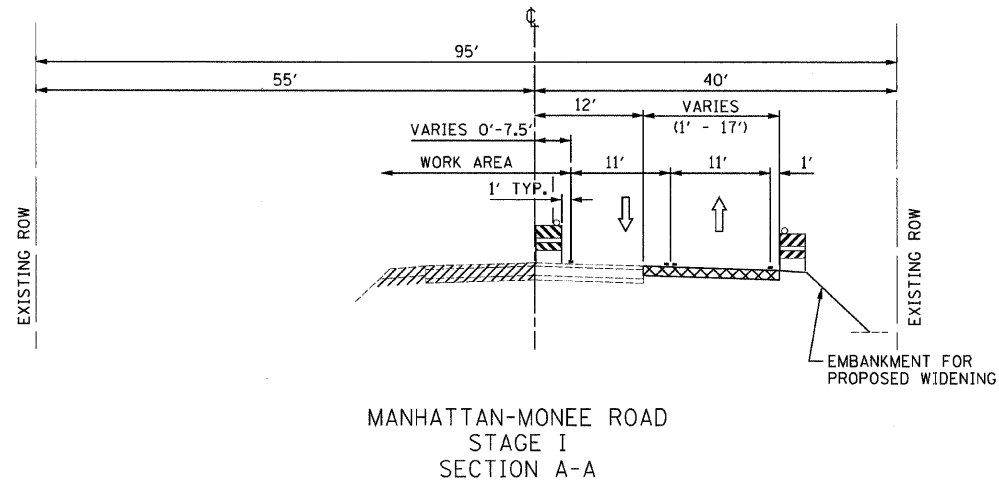


F.A.I. RTE.	SECTION	COUNTY	TOTAL SHEETS	SHEET NO.
57	*	WILL	303	45
STA.		TO STA.		
FED. ROAD DIST. NO.		ILLINOIS	FED. AID PROJECT	
*990182) R-389-1HB-1-BR-2		CONTRACT: 62253		



**LEGEND**

	PAVEMENT CONSTRUCTION		TEMPORARY PAVEMENT MARKING TYPE, COLOR, AND SIZE ARE SHOWN ON STAGING PLAN SHEETS
	TEMPORARY PAVEMENT		

REVISIONS	
NAME	DATE

ILLINOIS DEPARTMENT OF TRANSPORTATION  
I-57 AT MANHATTAN - MONEE ROAD  
SUGGESTED STAGES OF CONSTRUCTION  
AND  
TRAFFIC CONTROL  
TYPICAL SECTIONS  
STAGE I

SCALE: VERT. NTS  
HORIZ. NTS  
DATE 9/19/2008

DRAWN BY KLM  
CHECKED BY TMW

**Clark Dietz**  
ENGINEERS

DESIGN FIRM REGISTRATION  
No. 184-000450  
118 SOUTH CLINTON STREET  
SUITE 600  
CHICAGO, IL 60661  
PHONE : 312.648.8900  
FAX : 312.648.0204

P:\A\02231\plama\sheeta\102231CSST\01.dgn  
8/17/2008