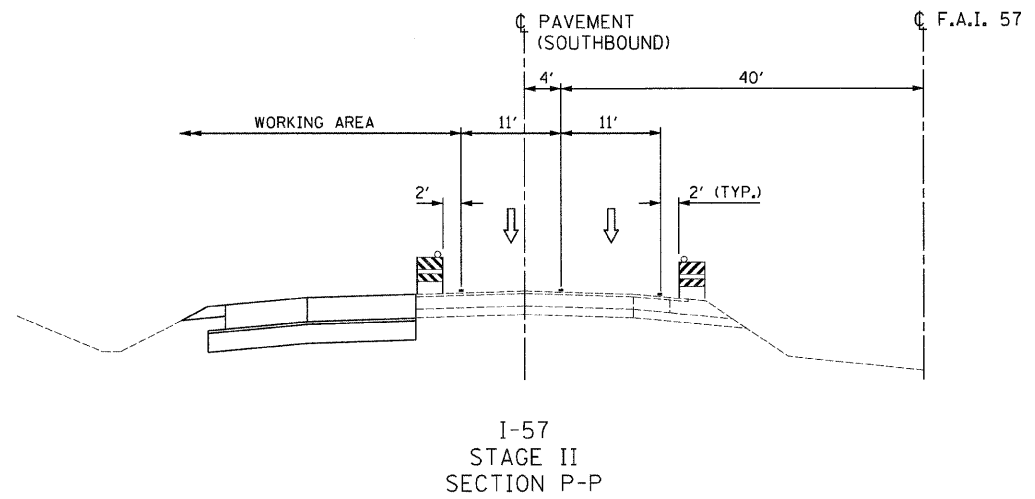




| | | | | |
|---------------------------|----------|------------------|--------------|-----------|
| F.A.I. RTE. | SECTION | COUNTY | TOTAL SHEETS | SHEET NO. |
| 57 | • | WILL | 303 | 57 |
| STA. | | TO STA. | | |
| FED. ROAD DIST. NO. | ILLINOIS | FED. AID PROJECT | | |
| •9901&2) R-3&9-11B-1-BR-2 | | CONTRACT: 62253 | | |



LEGEND


-  PAVEMENT CONSTRUCTION
-  TEMPORARY PAVEMENT
- TEMPORARY PAVEMENT MARKING TYPE, COLOR, AND SIZE ARE SHOWN ON STAGING PLAN SHEETS

| REVISIONS | |
|-----------|------|
| NAME | DATE |
| | |
| | |
| | |
| | |
| | |
| | |
| | |
| | |
| | |
| | |

ILLINOIS DEPARTMENT OF TRANSPORTATION
I-57 AT MANHATTAN - MONEE ROAD
SUGGESTED STAGES OF CONSTRUCTION
AND
TRAFFIC CONTROL
TYPICAL SECTIONS
STAGE II

SCALE: VERT. NTS
 HORIZ. NTS
DATE 9/19/2008

DRAWN BY KLM
CHECKED BY TMW



DESIGN FIRM REGISTRATION
No. 184-000450
118 SOUTH CLINTON STREET
SUITE 600
CHICAGO, IL 60681
PHONE : 312.648.9900
FAX : 312.648.0204