

F.A.I. RTE.	SECTION	COUNTY	TOTAL SHEETS	SHEET NO.
57	.	WILL	303	61
STA.	TO STA.			
FED. ROAD DIST. NO.	ILLINOIS	FED. AID PROJECT		
991&2) R-389-118-1-BR-2		CONTRACT: 62253		

RAMP A, B, C, AND D TRAFFIC CONTROL NOTES

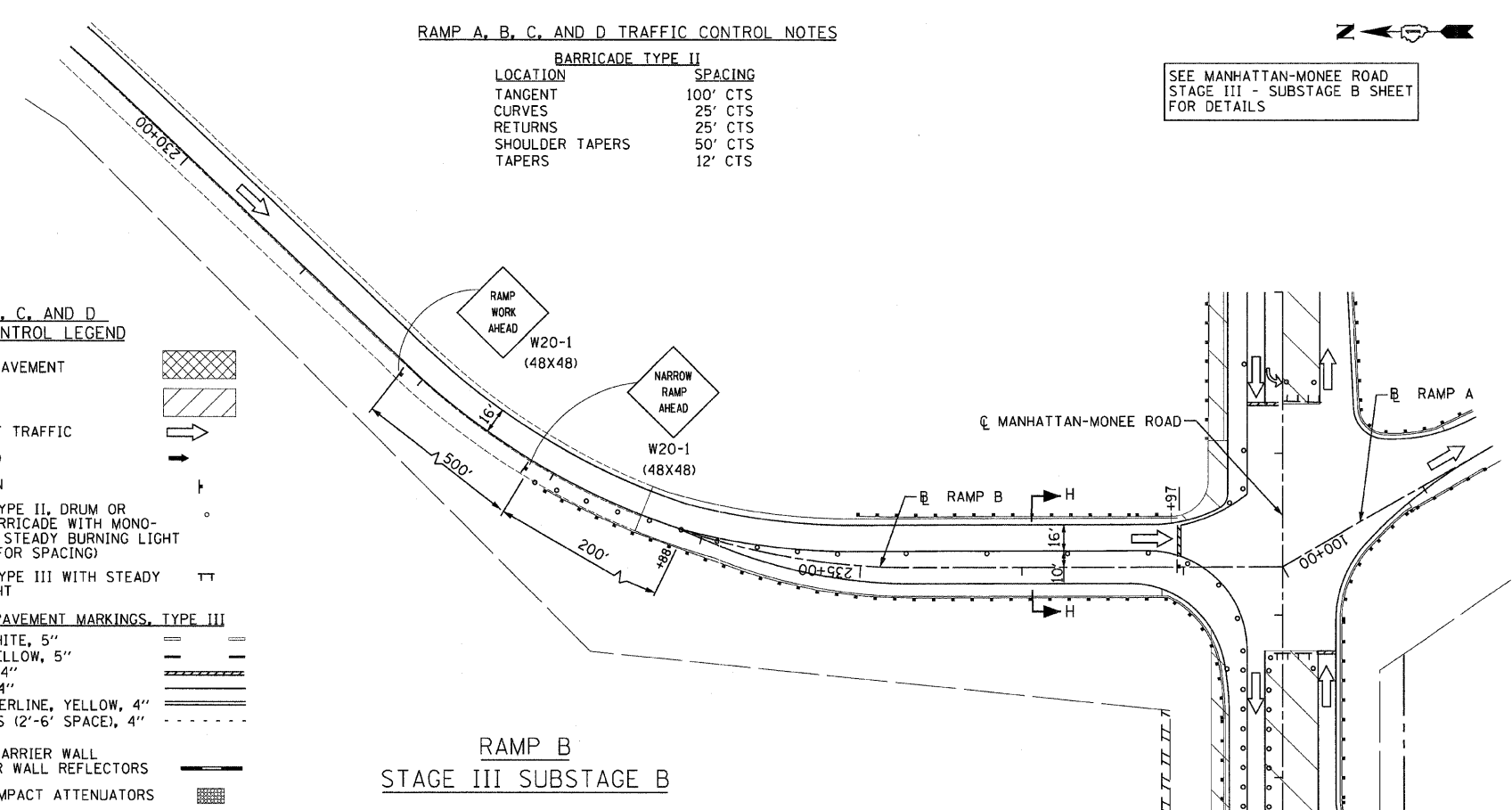
BARRICADE TYPE II

LOCATION	SPACING
TANGENT	100' CTS
CURVES	25' CTS
RETURNS	25' CTS
SHOULDER TAPERS	50' CTS
TAPERS	12' CTS

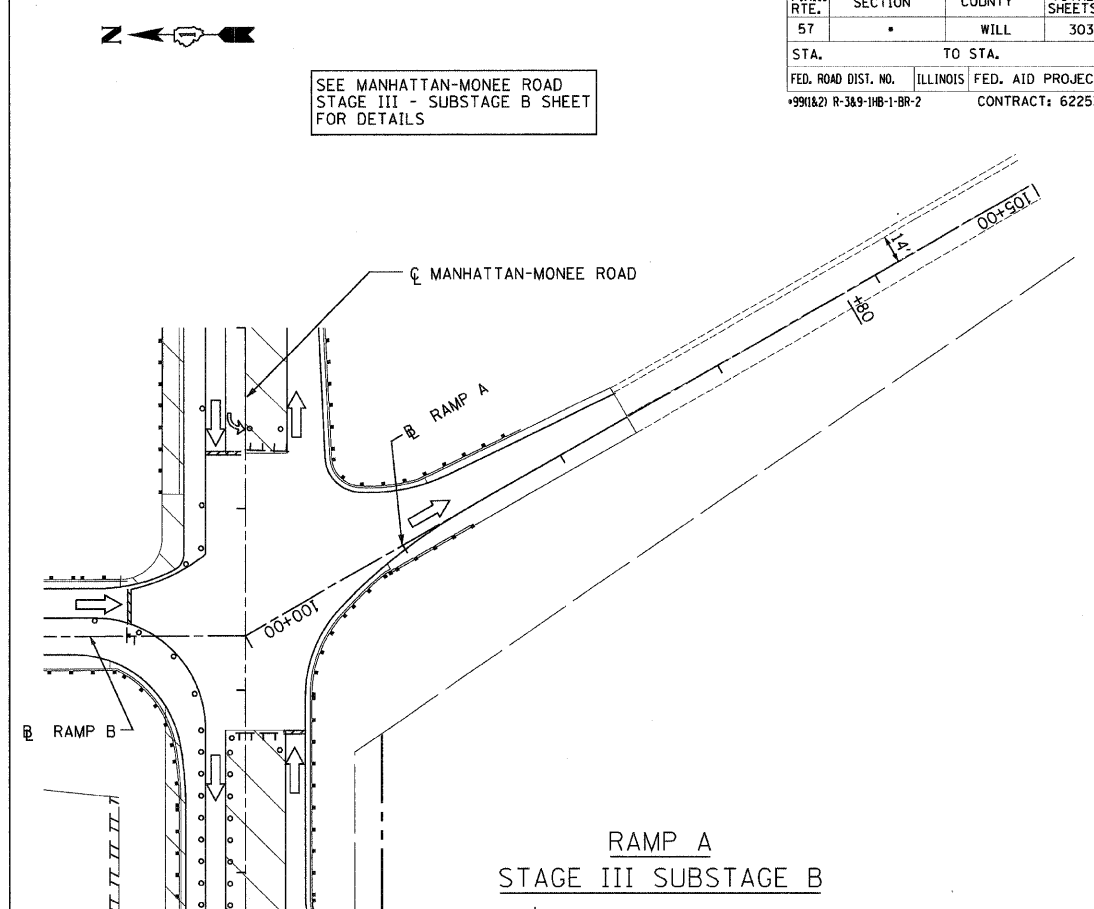
SEE MANHATTAN-MONEE ROAD
STAGE III - SUBSTAGE B SHEET
FOR DETAILS

RAMPS A, B, C, AND D
TRAFFIC CONTROL LEGEND

- TEMPORARY PAVEMENT
- WORK AREA
- DIRECTION OF TRAFFIC
- ARROW BOARD
- TRAFFIC SIGN
- BARRICADE TYPE II, DRUM OR VERTICAL BARRICADE WITH MONO-DIRECTIONAL STEADY BURNING LIGHT (SEE NOTES FOR SPACING)
- BARRICADE TYPE III WITH STEADY BURNING LIGHT
- TEMPORARY PAVEMENT MARKINGS, TYPE III
 - SKIP-DASH WHITE, 5"
 - SKIP DASH YELLOW, 5"
 - STOP LINE, 24"
 - SOLID LINE, 4"
 - DOUBLE CENTERLINE, YELLOW, 4"
 - DOTTED LINES (2'-6" SPACE), 4"
- TEMPORARY BARRIER WALL WITH BARRIER WALL REFLECTORS
- TEMPORARY IMPACT ATTENUATORS

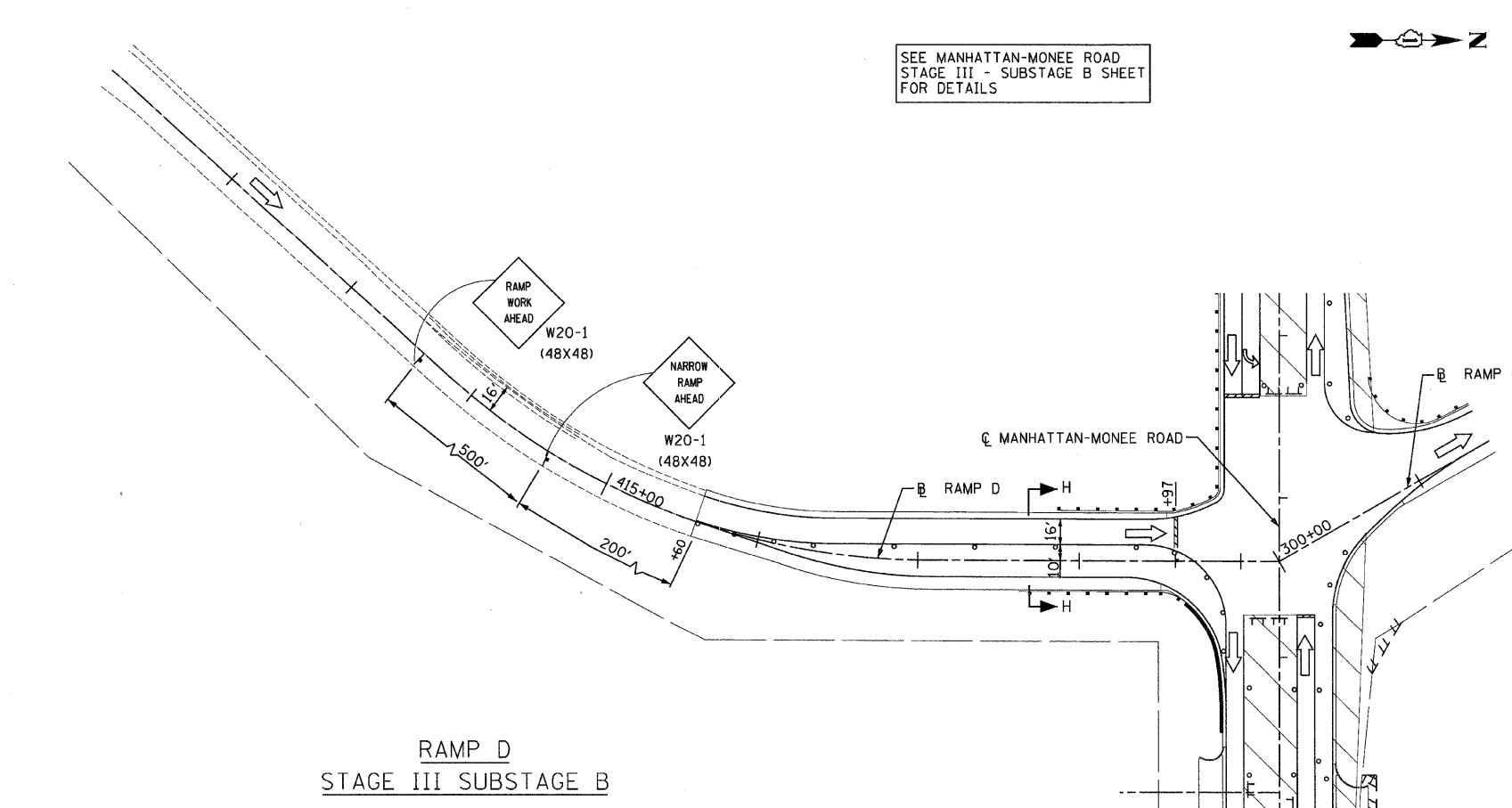


RAMP B
STAGE III SUBSTAGE B



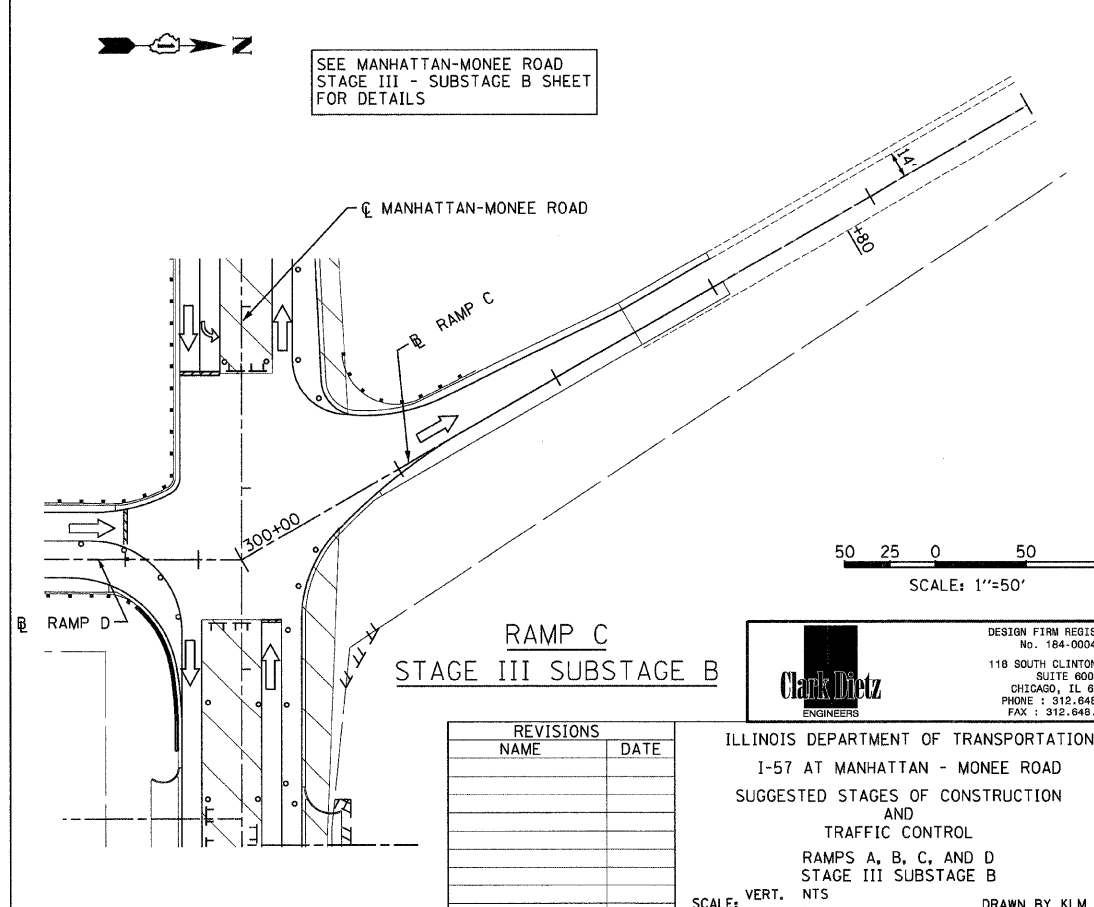
RAMP A
STAGE III SUBSTAGE B

SEE MANHATTAN-MONEE ROAD
STAGE III - SUBSTAGE B SHEET
FOR DETAILS



RAMP D
STAGE III SUBSTAGE B

SEE MANHATTAN-MONEE ROAD
STAGE III - SUBSTAGE B SHEET
FOR DETAILS



RAMP C
STAGE III SUBSTAGE B

50 25 0 50 100
SCALE: 1"=50'

REVISIONS	
NAME	DATE

DESIGN FIRM REGISTRATION
No. 184-000450
118 SOUTH CLINTON STREET
SUITE 600
CHICAGO, IL 60661
PHONE : 312.648.9900
FAX : 312.648.0204

ILLINOIS DEPARTMENT OF TRANSPORTATION
I-57 AT MANHATTAN - MONEE ROAD
SUGGESTED STAGES OF CONSTRUCTION
AND
TRAFFIC CONTROL
RAMPS A, B, C, AND D
STAGE III SUBSTAGE B
SCALE: VERT. NTS
HORIZ. 1"=50'
DATE 9/19/2008
DRAWN BY KLM
CHECKED BY TMW

P:\162231\p162231\162231\CSP1_2131.dgn
8/17/2008