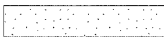

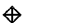


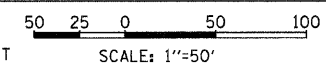


**EROSION CONTROL LEGEND**

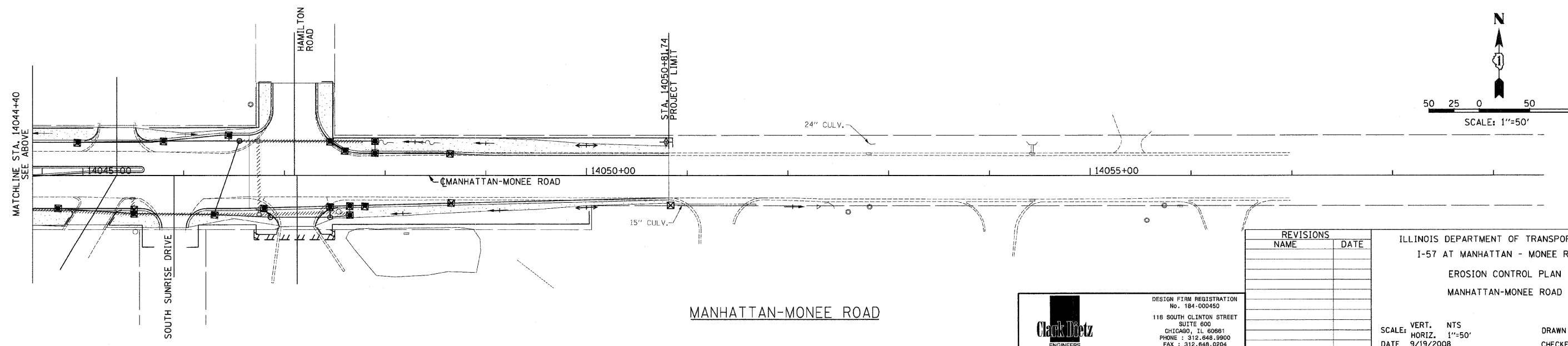
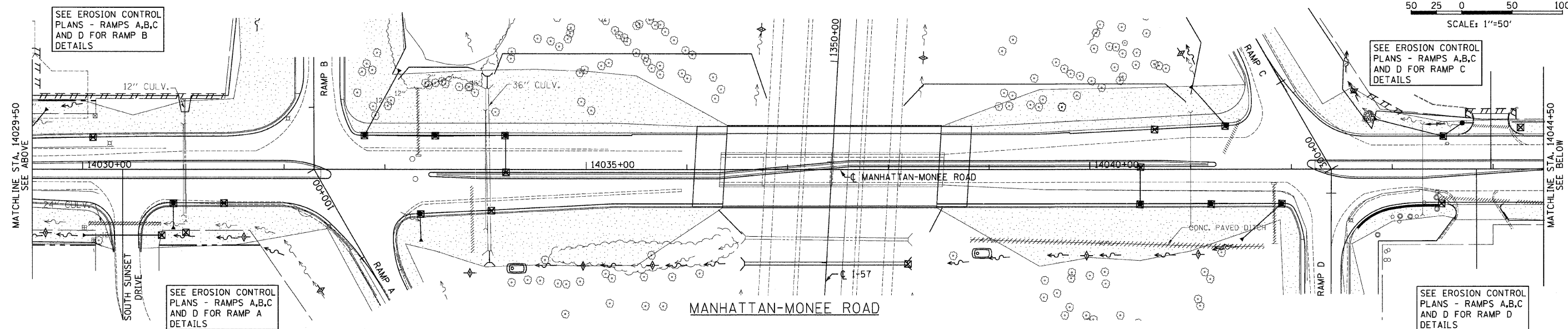
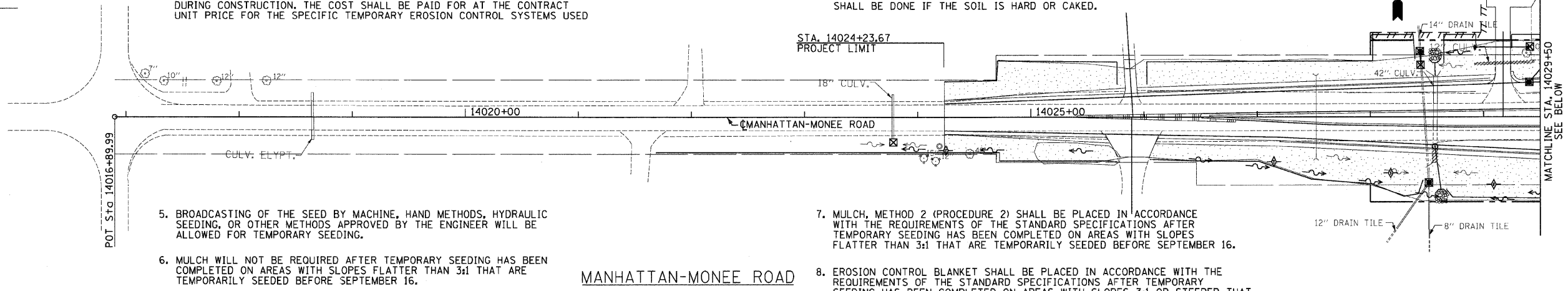
- TEMPORARY SEEDING 
- SEDIMENT CONTROL, SILT FENCE 
- INLET AND PIPE PROTECTION 
- TEMPORARY DITCH CHECK 
- SEDIMENT BASIN 

**EROSION CONTROL NOTES**

1. THE CONTRACTOR SHALL APPLY TEMPORARY SEEDING TO ALL ERODIBLE BARE EARTH AREAS WITHIN 7 DAYS AFTER THE EARTH IS EXPOSED. APPLICATION RATE USED: 100 LB/ACRE
2. IT IS THE RESPONSIBILITY OF THE CONTRACTOR TO PROVIDE ADEQUATE DRAINAGE DURING CONSTRUCTION. THE COST SHALL BE PAID FOR AT THE CONTRACT UNIT PRICE FOR THE SPECIFIC TEMPORARY EROSION CONTROL SYSTEMS USED
3. TOPSOIL, FERTILIZER NUTRIENTS, AND EROSION CONTROL BLANKET ARE NOT REQUIRED FOR TEMPORARY EROSION CONTROL SEEDING.
4. SEED BED PREPARATION WILL NOT BE REQUIRED FOR TEMPORARY SEEDING IF THE SOIL IS IN A LOOSE CONDITION. LIGHT DISKING SHALL BE DONE IF THE SOIL IS HARD OR CAKED.
5. BROADCASTING OF THE SEED BY MACHINE, HAND METHODS, HYDRAULIC SEEDING, OR OTHER METHODS APPROVED BY THE ENGINEER WILL BE ALLOWED FOR TEMPORARY SEEDING.
6. MULCH WILL NOT BE REQUIRED AFTER TEMPORARY SEEDING HAS BEEN COMPLETED ON AREAS WITH SLOPES FLATTER THAN 3:1 THAT ARE TEMPORARILY SEEDED BEFORE SEPTEMBER 16.
7. MULCH, METHOD 2 (PROCEDURE 2) SHALL BE PLACED IN ACCORDANCE WITH THE REQUIREMENTS OF THE STANDARD SPECIFICATIONS AFTER TEMPORARY SEEDING HAS BEEN COMPLETED ON AREAS WITH SLOPES FLATTER THAN 3:1 THAT ARE TEMPORARILY SEEDED BEFORE SEPTEMBER 16.
8. EROSION CONTROL BLANKET SHALL BE PLACED IN ACCORDANCE WITH THE REQUIREMENTS OF THE STANDARD SPECIFICATIONS AFTER TEMPORARY SEEDING HAS BEEN COMPLETED ON AREAS WITH SLOPES 3:1 OR STEEPER THAT ARE TEMPORARILY SEEDED ON OR AFTER SEPTEMBER 16.



F.A.I. RTE.	SECTION	COUNTY	TOTAL SHEETS	SHEET NO.
57		WILL	303	63
STA.		TO STA.		
FED. ROAD DIST. NO.		ILLINOIS	FED. AID PROJECT	
990182) R-389-1WB-1-BR-2		CONTRACT: 62253		




REVISIONS	
NAME	DATE

ILLINOIS DEPARTMENT OF TRANSPORTATION  
 I-57 AT MANHATTAN - MONEE ROAD  
 EROSION CONTROL PLAN  
 MANHATTAN-MONEE ROAD

SCALE: VERT. NTS  
 HORIZ. 1"=50'  
 DATE 9/19/2008

DRAWN BY MK, KN  
 CHECKED BY TMW



DESIGN FIRM REGISTRATION  
 No. 184-000450  
 118 SOUTH CLINTON STREET  
 SUITE 600  
 CHICAGO, IL 60681  
 PHONE : 312.648.9900  
 FAX : 312.648.0204

P:\022231\p\lana\shove\022231\ecp\0101.dgn  
 8/17/2008