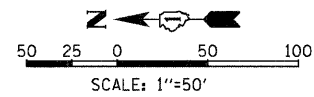


F.A.I. RTE.	SECTION	COUNTY	TOTAL SHEETS	SHEET NO.
57	*	WILL	303	64
STA.	TO STA.			
FED. ROAD DIST. NO.	ILLINOIS	FED. AID PROJECT		
991&21 R-3&9-1H&1-BR-2		CONTRACT: 62253		

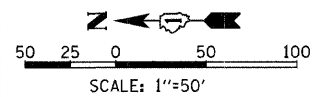
EROSION CONTROL NOTES

1. THE CONTRACTOR SHALL APPLY TEMPORARY SEEDING TO ALL ERODIBLE BARE EARTH AREAS WITHIN 7 DAYS AFTER THE EARTH IS EXPOSED. APPLICATION RATE USED: 100 LB/ACRE
2. IT IS THE RESPONSIBILITY OF THE CONTRACTOR TO PROVIDE ADEQUATE DRAINAGE DURING CONSTRUCTION. THE COST SHALL BE PAID FOR AT THE CONTRACT UNIT PRICE FOR THE SPECIFIC TEMPORARY EROSION CONTROL SYSTEMS USED



SEE EROSION CONTROL PLAN-MANHATTAN-MONEE ROAD FOR MANHATTAN-MONEE ROAD DETAILS

SEE EROSION CONTROL PLAN-I-57 FOR I-57 RAMP B DETAILS



SEE EROSION CONTROL PLAN-MANHATTAN-MONEE ROAD FOR MANHATTAN-MONEE ROAD DETAILS

EROSION CONTROL LEGEND

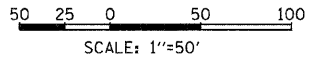
- TEMPORARY SEEDING
- SEDIMENT CONTROL, SILT FENCE
- INLET AND PIPE PROTECTION
- TEMPORARY DITCH CHECK
- SEDIMENT BASIN

SEE COMMITMENT No. 1 FOR INFORMATION REGARDING RAMP B

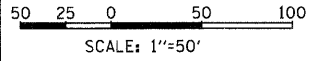
3. TOPSOIL, FERTILIZER NUTRIENTS, AND EROSION CONTROL BLANKET ARE NOT REQUIRED FOR TEMPORARY EROSION CONTROL SEEDING.
4. SEED BED PREPARATION WILL NOT BE REQUIRED FOR TEMPORARY SEEDING IF THE SOIL IS IN A LOOSE CONDITION. LIGHT DISKING SHALL BE DONE IF THE SOIL IS HARD OR CAKED.

RAMP B

5. BROADCASTING OF THE SEED BY MACHINE, HAND METHODS, HYDRAULIC SEEDING, OR OTHER METHODS APPROVED BY THE ENGINEER WILL BE ALLOWED FOR TEMPORARY SEEDING.
6. MULCH WILL NOT BE REQUIRED AFTER TEMPORARY SEEDING HAS BEEN COMPLETED ON AREAS WITH SLOPES FLATTER THAN 3:1 THAT ARE TEMPORARILY SEEDED BEFORE SEPTEMBER 16.



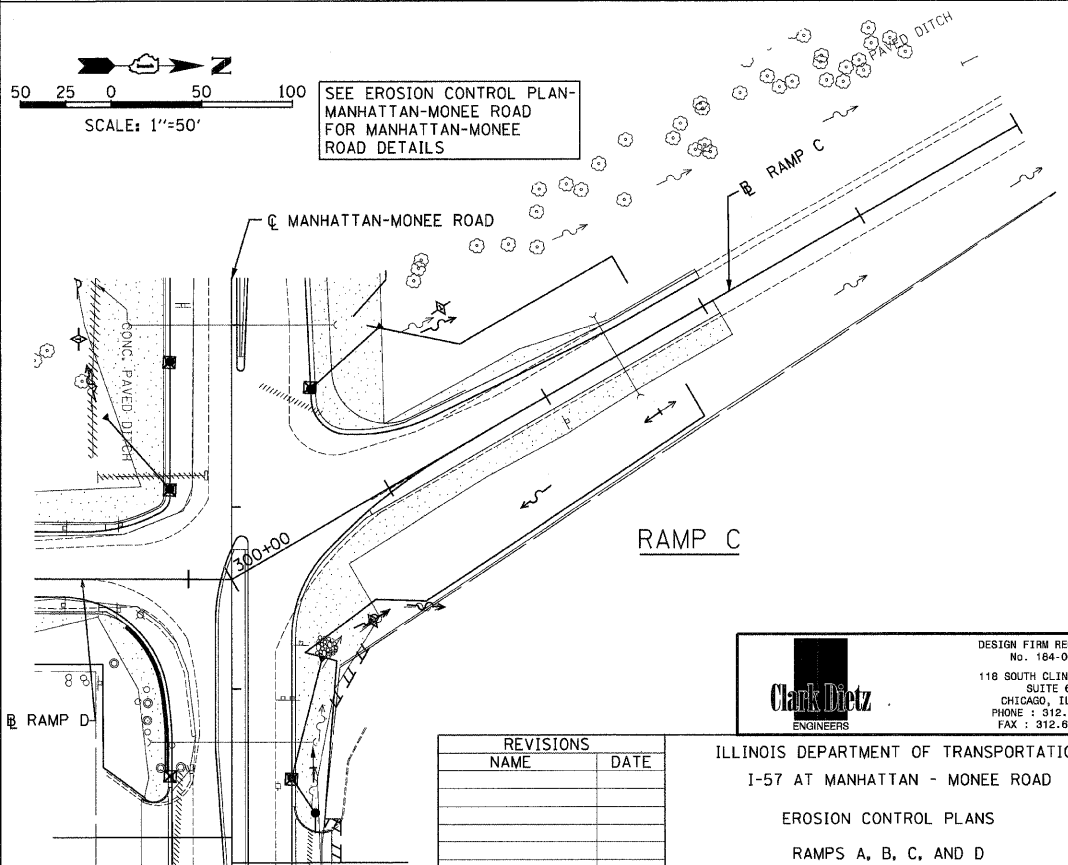
SEE EROSION CONTROL PLAN-MANHATTAN-MONEE ROAD FOR MANHATTAN-MONEE ROAD DETAILS



SEE EROSION CONTROL PLAN-MANHATTAN-MONEE ROAD FOR MANHATTAN-MONEE ROAD DETAILS

7. MULCH, METHOD 2 (PROCEDURE 2) SHALL BE PLACED IN ACCORDANCE WITH THE REQUIREMENTS OF THE STANDARD SPECIFICATIONS AFTER TEMPORARY SEEDING HAS BEEN COMPLETED ON AREAS WITH SLOPES FLATTER THAN 3:1 THAT ARE TEMPORARILY SEEDED BEFORE SEPTEMBER 16.
8. EROSION CONTROL BLANKET SHALL BE PLACED IN ACCORDANCE WITH THE REQUIREMENTS OF THE STANDARD SPECIFICATIONS AFTER TEMPORARY SEEDING HAS BEEN COMPLETED ON AREAS WITH SLOPES 3:1 OR STEEPER THAT ARE TEMPORARILY SEEDED ON OR AFTER SEPTEMBER 16.

RAMP D



RAMP C

REVISIONS	
NAME	DATE

Clark Dietz
ENGINEERS

DESIGN FIRM REGISTRATION
No. 184-000450
118 SOUTH CLINTON STREET
SUITE 600
CHICAGO, IL 60661
PHONE : 312.648.9900
FAX : 312.648.0204

ILLINOIS DEPARTMENT OF TRANSPORTATION
I-57 AT MANHATTAN - MONEE ROAD
EROSION CONTROL PLANS
RAMPS A, B, C, AND D

SCALE: VERT. NTS
HORIZ. 1"=50'
DATE 9/19/2008

DRAWN BY MK, KN
CHECKED BY TMW